

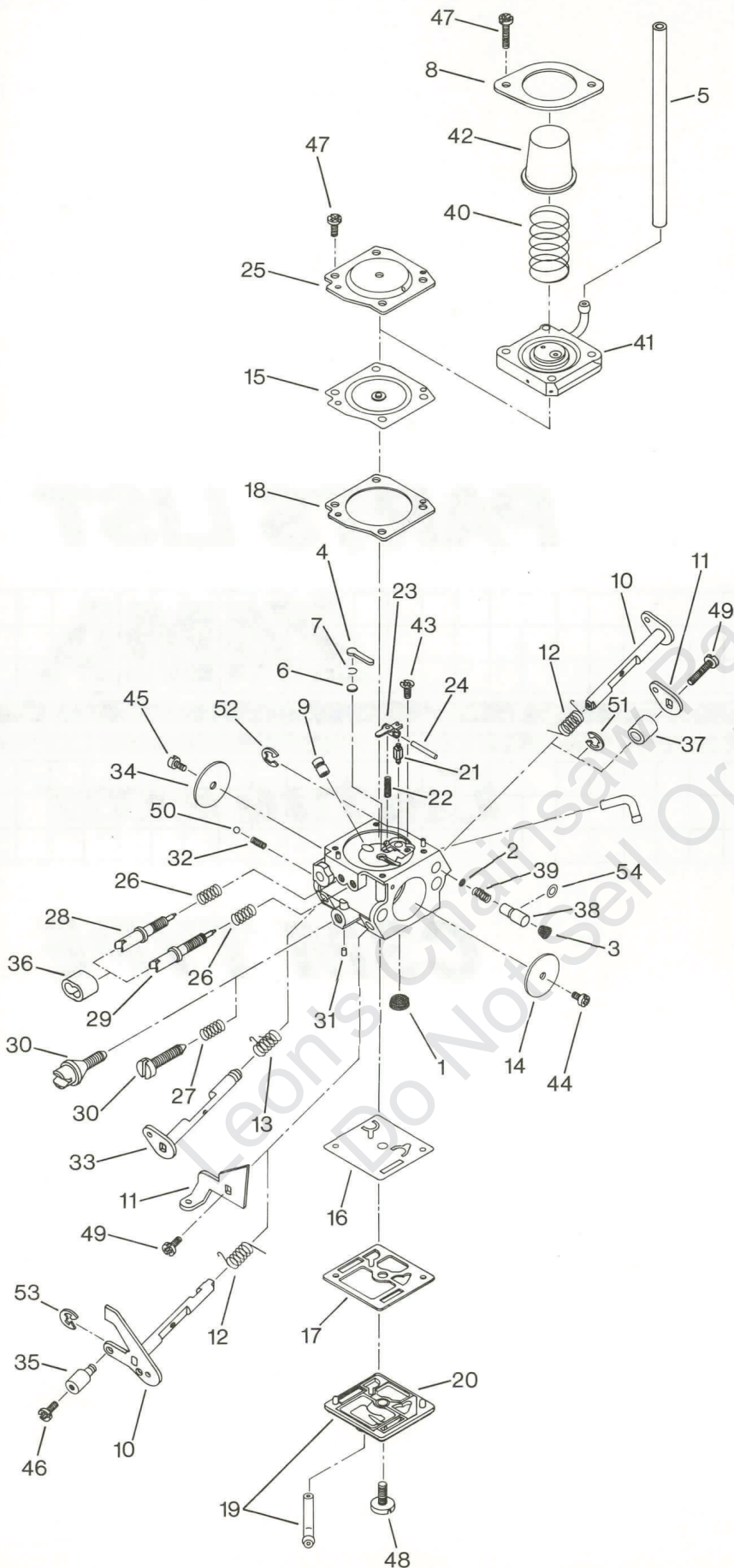
PARTS LIST

ZAMA									
-------------	--	--	--	--	--	--	--	--	--

Carburetor									
-------------------	--	--	--	--	--	--	--	--	--

C3M TYPE

Leon's Chainsaw Parts & Repair
Do Not Sell On EBay



REF. NO	PART NAME
1	Strainer
2	Strainer
3	Strainer
4	Plug, Welch
5	Tubing, Drain
6	Valve, check
7	Retainer, Check Valve
8	Retainer, Syringe
9	Nozzle Ass'y, Check Valve
10	Shaft Ass'y, Throttle
11	Lever, Throttle
12	Spring, Throttle Return
13	Spring, Choke Return
14	Valve, Throttle
15	Diaphragm Ass'y, Metering
16	Diaphragm, Pump
17	Gasket, Metering Chamber
18	Gasket, Pump
19	Cover Ass'y, Pump
20	Cover, Pump
21	Valve, Inlet Needle
22	Spring, Metering Lever
23	Lever, Metering
24	Pin
25	Cover, Metering Chamber
26	Spring, Adjust Screw
27	Spring, Adjust Screw
28	Screw, Main Mixture
29	Screw, Idle Mixture
30	Screw, Throttle Adjust
31	Piece, Friction
32	Spring, Friction
33	Shaft Ass'y, Choke
34	Valve, Choke
35	Post
36	Collar
37	Plunger
38	Spring (Plunger Return)
39	Spring (Syringe)
40	Base Ass'y, Primer
41	Syringe
42	Screw (Pin)
43	Screw (Throttle Valve)
44	Screw (Choke Valve)
45	Screw (Post)
46	Screw (Metering Cover)
47	Screw (Pump Cover)
48	Screw (Throttle Lever)
49	Ball, Steel
50	E-Ring (Choke shaft)
51	E-Ring (Throttle shaft)
52	E-Ring (Post)
53	O-Ring (Plunger)

C3M TYPE

PARTS LIST

CARBURETOR	CUSTOMER	CUSTOMER NO.	EQUIPMENT	MODEL
C3M-S5	ANDREAS STIHL	1128 120 0601	CHAIN SAW	044
C3M-S5A	ANDREAS STIHL	1128 120 0601	CHAIN SAW	044

REF. NO	PART NAME	C3M-S5	C3M-S5A			
	Venturi	17mm	17mm			
	Repair Kit, Major ♦	K500092	K500076			
	Repair Kit, Minor ★	K500077	K500077			
	Gasket & Diaphragm Kit ●	K015043	K015043			
	Cover Kit, Pump ▲	-----	-----			
1	★ Strainer	♦0004009	♦0004009			
2	Strainer	-----	-----			
3	Strainer	-----	-----			
4	★ Plug, Welch	♦0005005	♦0005005			
5	Tubing, Drain	-----	-----			
6	★ Valve, check	-----	-----			
7	★ Retainer, Check Valve	-----	-----			
8	Retainer, Syringe	-----	-----			
9	Nozzle Ass'y, Check Valve	♦A007020	♦A007027			
10	Shaft Ass'y, Throttle	A011037	A011037			
11	Lever, Throttle	-----	-----			
12	Spring, Throttle Return	0013020	0013020			
13	Spring, Throttle Return	0013021	0013021			
14	Valve, Throttle	0014019	0014019			
15	☆ Diaphragm Ass'y, Metering	●A015013	●A015013			
16	★ Diaphragm, Pump	●0015024	●0015024			
17	★ Gasket, Metering Chamber	●0016026	●0016026			
18	★ Gasket, Pump	●0016025	●0016025			
19	Cover Ass'y, Pump	A017008	A017008			
20	Cover, Pump	-----	-----			
21	★ Valve, Inlet Needle	♦0018004	♦0018004			
22	★ Spring, Metering Lever	♦0019011	♦0019011			
23	★ Lever, Metering	♦0020009	♦0020009			
24	Pin	♦0021001	♦0021001			
25	Cover, Metering Chamber	0028012	0028012			
26	Spring, Adjust Screw	♦0029005	♦0029005			
27	Spring, Adjust Screw	-----	-----			
28	Screw, Main Mixture	♦0030027	♦0030027			
29	Screw, Idle Mixture	♦0031027	♦0031027			
30	Screw, Throttle Adjust	0035014	0035014			
31	Piece, Friction	0036002	0036002			
32	Spring, Friction	-----	-----			
33	Shaft Ass'y, Choke	A041012	A041012			
34	Valve, Choke	0043012	0043012			
35	Post	-----	-----			
36	Boot	-----	-----			
37	Collar	-----	-----			
38	Spring (Plunger Return)	-----	-----			
39	Spring (Syringe)	-----	-----			
40	Base Ass'y, Primer	-----	-----			
41	Syringe	-----	-----			
42	Screw (Pin)	♦14803006	♦14803006			
43	Screw (Throttle Valve)	156030055	156030045			
44	Screw (Choke Valve)	156030045	156030045			
45	Screw (Post)	-----	-----			
46	Screw (Metering Cover)	17103007	17103007			
47	Screw (Pump Cover)	17004010	17004010			
48	Screw (Throttle Lever)	-----	-----			
49	Ball, Steel	-----	-----			
50	E-Ring (Throttle shaft)	19500030	19500030			
51	E-Ring (Choke shaft)	19500025	19500025			
52	E-Ring (Post)	-----	-----			
53	O-Ring (Plunger)	-----	-----			

Leon's Chainsaw Parts & Repair
Do Not Sell Or Reproduce

**CARBURETOR
DIVISION**



SHINAGAWA DIECASTING CO., LTD.

Japan

U.S. Subsidiary

U.S.A. ZAMA, INC.

2909 Oregon Court, Suite C-4, Torrance, CA 90503

Phone: 213-320-6227

Telefax: 213-618-9845

ZAMA EUROPE

17 Rue Des Renoncules, 1341 Ceroux (Ottignie), Belgium.

Phone: 10-615615, Telefax: 10-615617