

CARBURETOR PARTS

Homelite Chain Saw

A-68251-A
A-67887-C

A-67887-C (HS-92D)

Used on

XL 921

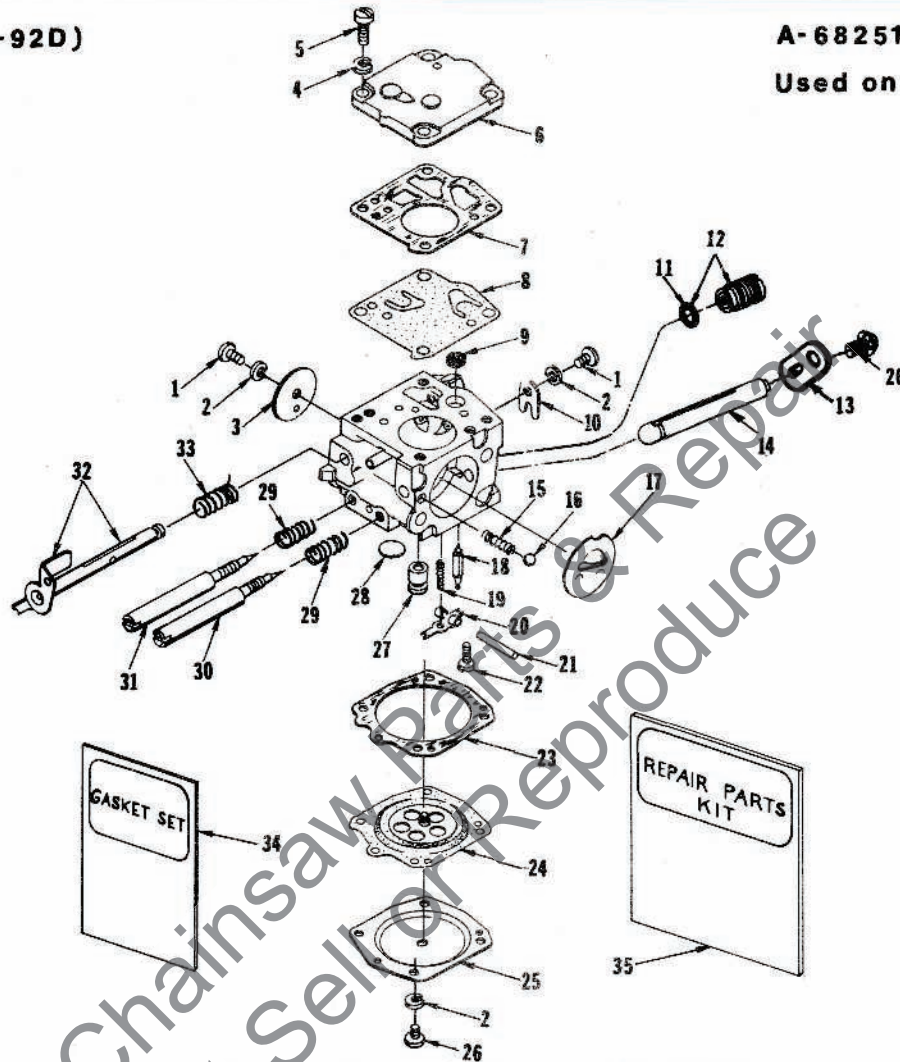
XL 923

XL 924

XL 923 FP

A-68251-A (HS-103B)

Used on XL 924W only



No.	Description	Part No.	Qty.
1	SCREW-rd., 4-40 x 3/16	† 80264	2
2	WASHER-lock, #4	† 83008-1	6
3	SHUTTER-throttle	67994	1
4	WASHER-lock, #6	83024	4
5	SCREW-fil, 6-32 x 3/8	80275	4
6	COVER-fuel pump diaphragm	58975	1
7	GASKET-pump diaphragm	58981	1
8	DIAPHRAGM-fuel pump	† 58980-R	1
9	SCREEN-fuel inlet	† 58974	1
10	CLIP-throttle shaft retaining	58982	1
11	GASKET	74060	1
12	GASKET (A-68251-A only)	55344	1
12	VALVE-governor	A-65801	1
	PLUG-screw (A-68251-A only)	68297	1
13	LEVER-choke	68397	1
14	SHAFT-choke	65799	1
15	SPRING-choke friction	73264	1
16	BALL-choke friction	25527	2
17	SHUTTER-choke	58984	1

No.	Description	Part No.	Qty.
18	NEEDLE-inlet	† 59717	1
19	SPRING-control lever	† 55759	1
20	LEVER-inlet control	† 59716	1
21	PIN-control lever fulcrum	† 58977	1
22	SCREW-oval, 4-40 x 1/4	† 65798	1
23	GASKET-main diaphragm	58978	1
24	DIAPHRAGM-main control	† 58988	1
25	COVER-main diaphragm	58979	1
26	SCREW-rd., 4-40 x 1/4	80591	5
27	VALVE-check (See Note)	68284	1
28	PLUG-extension (large)	† 58991	1
29	SPRING-adjustment needle	† 73075	2
30	SCREW-main adjustment	† 63676	1
31	SCREW-idle adjustment	† 63677	1
32	SHAFT-throttle w/lever	A-67995	1
33	SPRING-throttle opening	† 59460	1
34	GASKET-set	67866	1
35	REPAIR KIT	67870	1

† Included in Repair Kit

Note - 68284 Check Valve can be used in place of 54444
Check Valve for carburetors that are hard starting.

HOMELITE®

A **textron** DIVISION, PORT CHESTER, N.Y. 10573