

PART NO. 17048 REV. 1

Printed in U.S.A.

Price 35¢

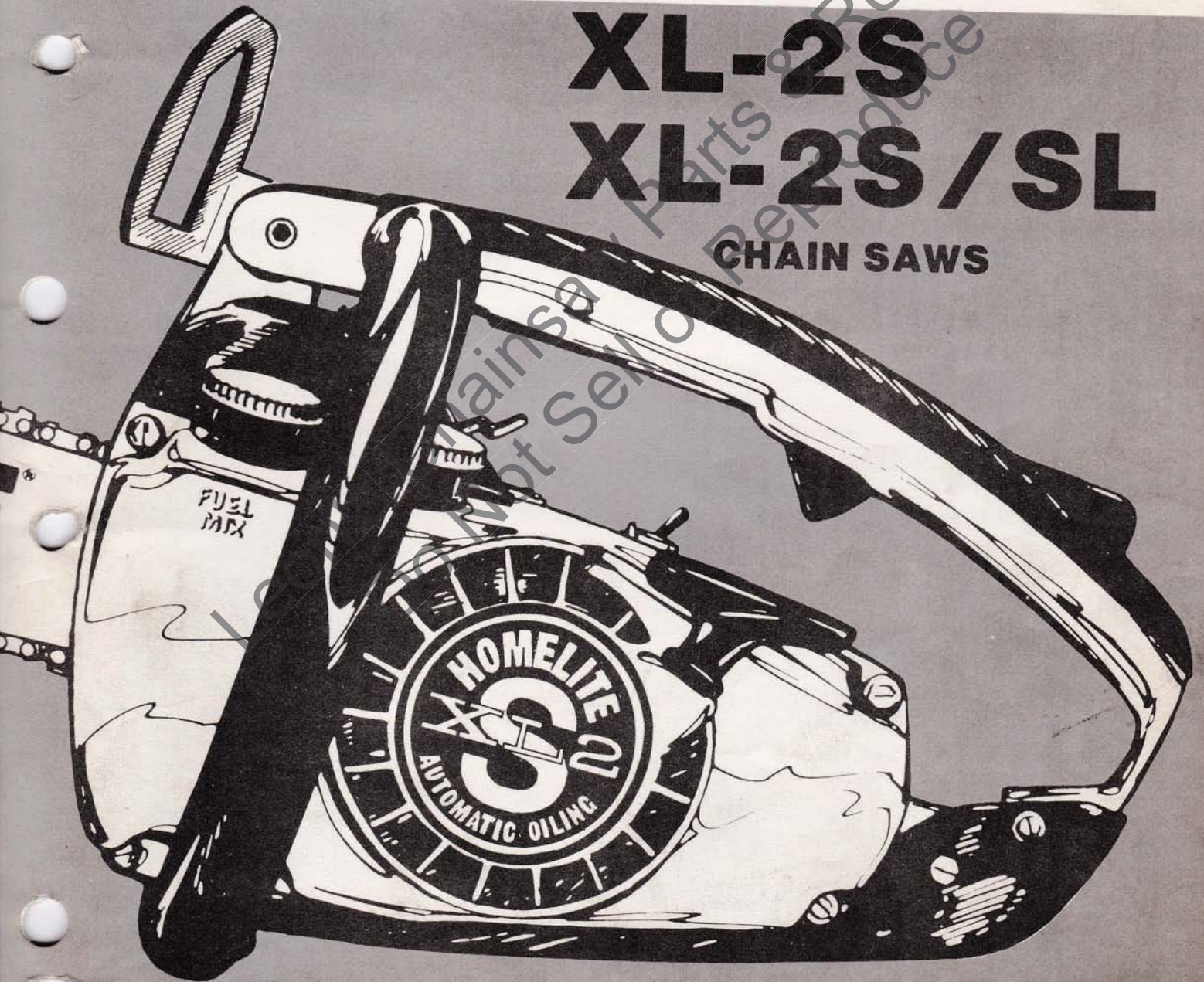
parts list

HOMELITE®

XL-2S

XL-2S/SL

CHAIN SAWS



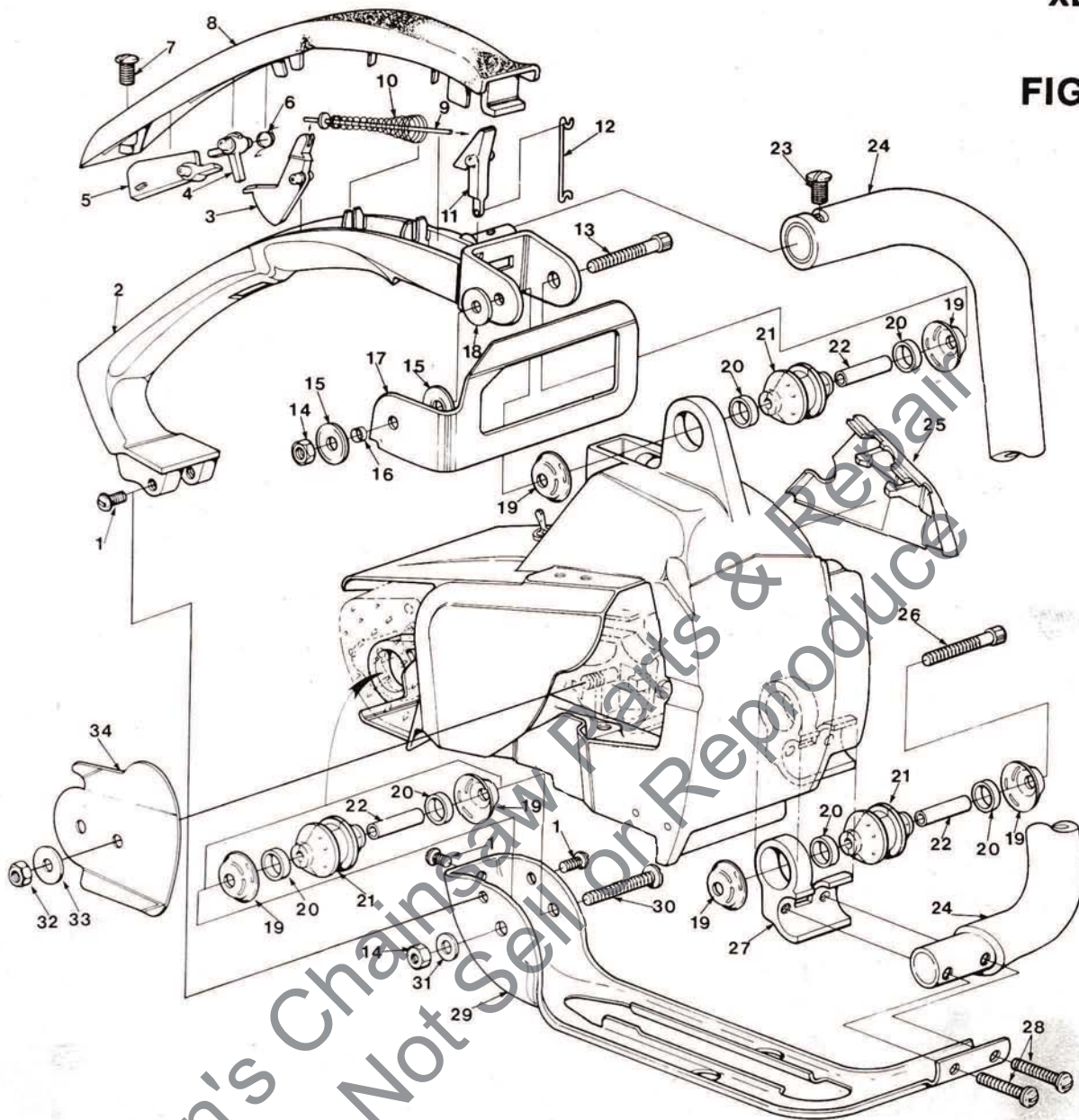
ACCESSORIES

GASKET- Oil pump body	69596
KIT- Spark arrestor (for A-69253-1 Muffler)	A-69586-B
Includes:	
SCREW- Self tapping (#6 x 1/4) (3)	80328
TUBING- Rubber (10 ft.) (oil)	70309-99
TUBING- Rubber (10 ft.) (fuel)	70310-99
SAFE•T•TIP- (Standard equipment)	A-70776-A
Includes:	
SCREW- Sems hex hd.	93695
COVER- Bar (12" Bar)	92693

TOOLS

PULLER- Magneto rotor	A-24747-A
Includes:	
BOLT- 5/16-18 x 1 3/4	80288
NUT- Hex 5/16-18 (2)	81196
WRENCH- Hex soc. 5/32 (For 10-24 screw)	22126
WRENCH- Hex soc. 9/64 (For 8-32 screw)	23528
WRENCH- Spanner (Clutch)	A-93791
Includes:	
PIN	23717-A
WRENCH- Flat (for guide bar nut)	24814
DRIVE- Check valve (HDC carb. only)	24972
PLIERS- Tru-Arc	17198
GREASE- Multi-Use (8 oz. can)	17193

**XL-2S/SL
XL-2S
FIGURE 1**



NO.	DESCRIPTION	PART NO.	QTY.
1	SCREW- Pan hd. (8-32 x 3/8)	80577-2	3
2	HANDLE- Throttle	70568-2	1
3	TRIGGER	70619	1
4	STOP- Throttle safety	70593	1
5	LEVER- Throttle safety	70594	1
6	SPRING- Torsion	70591	1
7	SCREW- Pan hd. (10-32 x 5/8)	82239	1
8	COVER- Handle	70626	1
9	ROD- Throttle	A-70614	1
10	SPRING- Throttle rod	69249	1
11	LEVER- Throttle	69107	1
12	ROD- Throttle	70612	1
13	SCREW- Cap hex soc., hd. (10-32 x 2") XL-2S only	82321	1
	SCREW- Cap hex soc., 10-32 x 1 3/4 (XL2S/SL only)	82310	1
14	NUT- Hex (10-32)	81206	2
15	WASHER- Belleville XL-2S only	70728	2
16	SPACER- Hand guard XL-2S only	70748	1
17	GUARD- Hand XL-2S only	70802-1	1

NO.	DESCRIPTION	PART NO.	QTY.
18	WASHER- Flat	70632	1
19	WASHER- Isolator	70440-A	6
20	RING- Isolator	70432	6
21	ISOLATOR- Vibration	70485-A	3
22	SPACER- Isolator	70433	3
23	SCREW- Pan washer hd. (10-32 x 5/8)	82239	1
24	HANDLE BAR	A-70604	1
25	COVER- Air filter	70571	1
26	SCREW- Cap hex soc. (10-32 x 1 3/4)	2310	1
27	BRACKET- Isolator mtg.	70558-2	1
28	SCREW- Hex hd. (10-32 x 1 3/16)	80841	2
29	BRACE- Handle	70554-1	1
30	SCREW- Pan hd. (10-32 x 1 3/4")	82317	1
31	WASHER- Hex Flat (10)	84008	1
32	NUT- Guide bar (1/4-28)	81065-2	1
33	WASHER- Flat	69309-A	1
34	PLATE- Guide bar	69360	1

**XL-2S/SL
XL-2S**

FIGURE 2

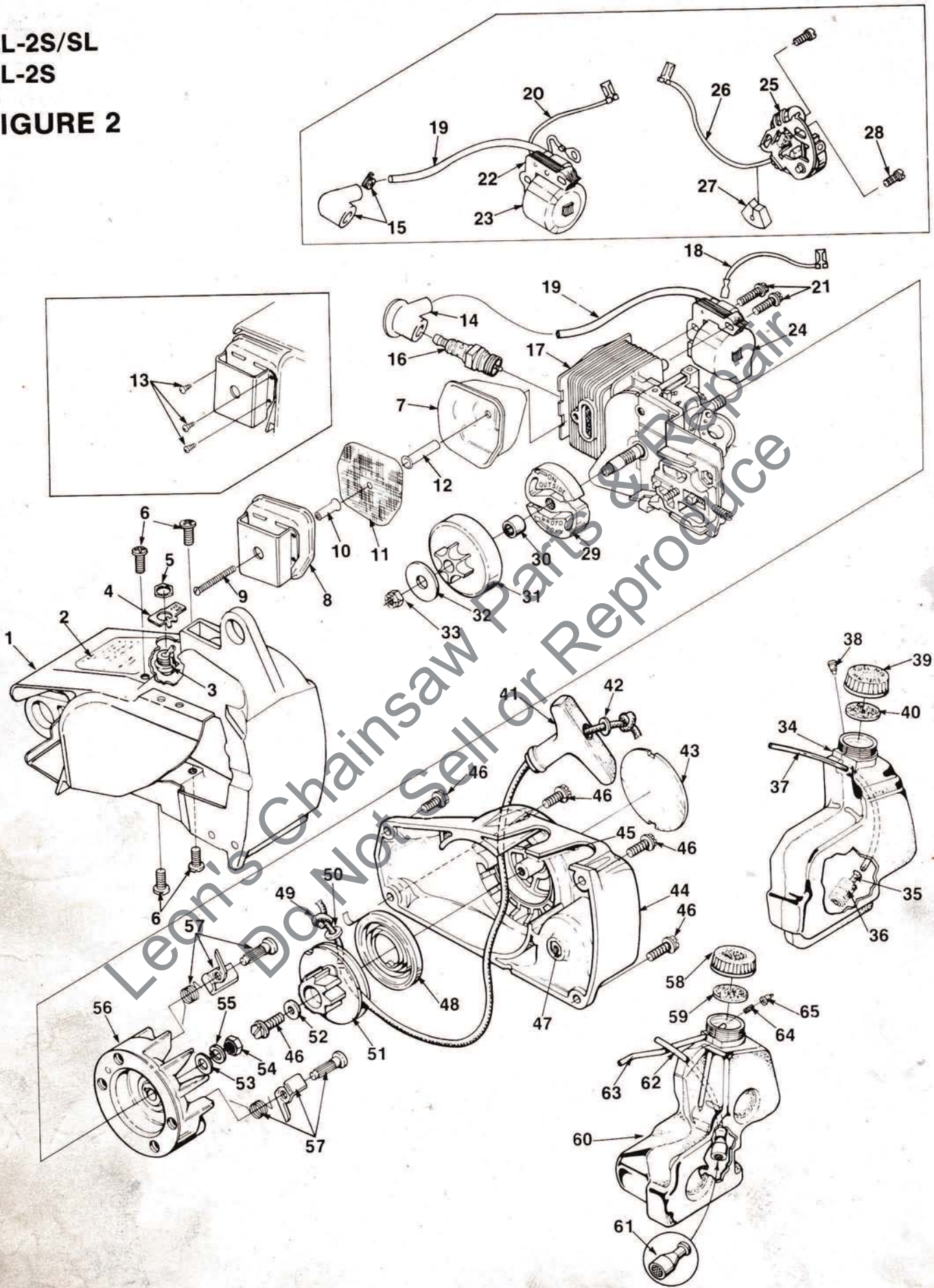


FIGURE 2

NO.	DESCRIPTION	PART NO.	QTY.	NO.	DESCRIPTION	PART NO.	QTY.
1	HOUSING- Engine	A-70662-C	1	41	GRIP- Starter rope	70211	1
	Includes:			42	WASHER- Flat	84025	1
2	PLATE- Instructions	70835	1	43	DECAL	70617	1
3	SWITCH- Stop (grounding)	A-63938	1	44	HOUSING- Rewind starter	A-70663	1
	Includes:				Includes:		
4	PLATE- "ON-OFF"	70834	1	45	FILTER- Fuel tank valve	69443	1
5	NUT- Hex	72084-A1	1	46	SCREW- Hex washer hd. (10-32 x 5/8)	80704	5
6	SCREW- Truss Hd.	82393	4	47	NUT- Center locking hex (#10-32)	81206	1
7	MUFFLER	A-94051-B	1	48	SPRING- Rewind	69217	1
	Includes:			49	ROPE- Starter (#4, 34" long)	A-93874-A	1
8	CAP- Muffler	A-95428	1		Includes:		
9	SCREW- (10-24 x 1 3/4)	82320	1	50	WASHER- Nylon	93862	1
	SPARK ARRESTOR	A-94139	1	51	PULLEY- Starter	94562	1
	Includes:			52	WASHER- Flat	63606-1	1
10	SPACER	93989	1	53	WASHER- Flat	84065-1	1
11	SCREEN- Spark arrestor	D-93991	1	54	NUT- Hex	81117	1
12	SPACER	93990	1	55	WASHER- Lock	83002	1
13	SCREW- #4 x .250 (Note 5)	82342	3	56	ROTOR & STARTER PAWL (Solid state)	A-94717	1
14	TERMINAL- Spark plug (Solid state) (Serviced with item #15)				ROTOR & STARTER PAWL (Point ignition)	A-69297-A	1
15	TERMINAL- Spark plug (Point ignition)	A-33055	1		Includes:		
16	SPARK PLUG- Champion DJ-7J	68616-S	1	57	KIT- Starter pawl (See Note 4)	A-70285-A	2
17	CYLINDER & CRANKCASE (SL only)	A-95096	1		Includes:		
	CYLINDER & CRANKCASE (Solid state)	A-95071	1	58	CAP- Tank oil	A-70893-A	1
	CYLINDER & CRANKCASE (Point ignition) (See Fig. 3 for breakdown)	A-69421-B	1		Includes:		
18	LEAD- Ground (Solid state)	A-94721	1	59	GASKET- Fuel filler cap (See Note 3)	94838-A	1
19	LEAD- High tension (See Note 1)	69326	1	60	TANK- Oil	A-70583	1
20	LEAD- Ground (Point ignition)	A-95051	1		Includes:		
21	SCREW- Hex w/washer (8-32 x 3/4)	82248	2	61	FILTER- Oil	A-68593	1
22	CORE- Coil (Point ignition)	69324	1	62	TUBING- Rubber	70309-24	1
23	COIL- Ignition (Point ignition)	69323	1	63	LINE- Pressure	A-69358-A	1
	RETAINER- Coil (Not Shown) (Point ignition)	69325	1		Includes:		
24	MODULE- Ignition (Solid state) (Note 6)	94711	1	64	CONNECTOR- Oil line	69659-1A	1
25	POINT SET- Breaker (Point ignition)	A-69336	1	65	VALVE- Check (Duckbill)	69451	1
	Includes:						
26	LEAD- Electrical (Point ignition)	70249	1				
27	SEAL- Lead (Point ignition)	69247	1				
28	SCREW- Fil. hd., (6-32 x 3/8) (Point ignition)	88026	2				
29	CLUTCH- "S" (See Note 2)	A-70351-A	1				
30	BEARING- Clutch	68512	1				
31	SPROCKET & DRUM	A-70221-C	1				
32	WASHER- Thrust (Clutch)	95299	1				
33	NUT- Locking 5/16-24 (See Note 2)	81112	1				
34	TANK- Fuel	A-70582	1				
	Includes:						
35	FILTER- Fuel	A-69923	1				
	Includes:						
36	ELEMENT- Felt	64083	1				
37	TUBING- Rubber	70310-29	1				
38	VALVE- Check (Duckbill)	69451	1				
39	CAP- Fuel (Red)	A-70894-A	1				
	Includes:						
40	GASKET- Filler cap (See Note 3)	94838-A	1				

NOTE 1: For Solid State Ignition cut wire to 6 1/2".

NOTE 2: Crankshafts without threaded clutch end require Retaining Ring 93972.

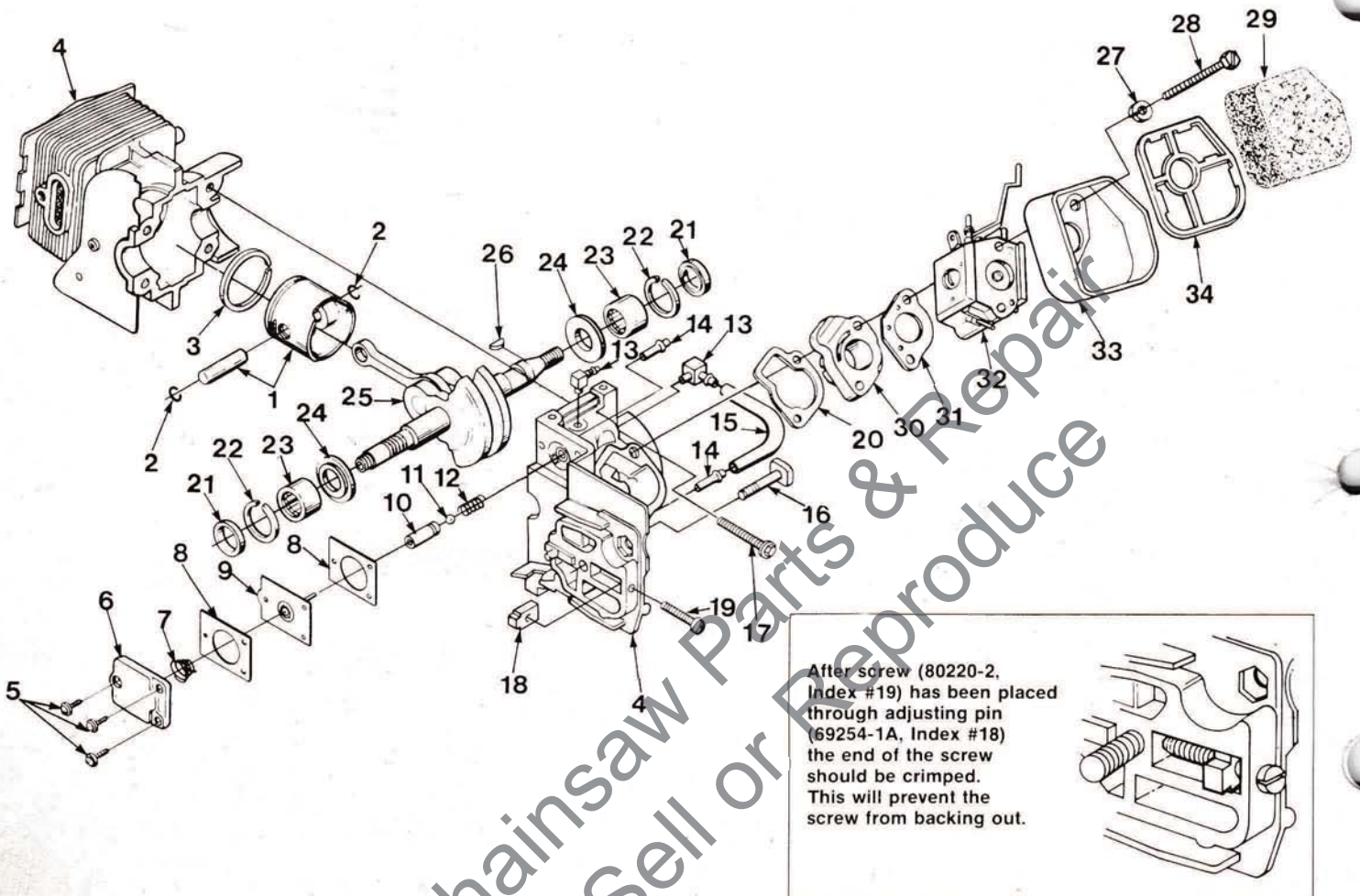
NOTE 3: Use 70826 Gasket in A-70893 and A-70894 external thread caps. Use 69585 Gasket for caps with internal threads.

NOTE 4: Replacement Starter Pawl Kit, item #57 includes an over sized pin. Paint, stamp or mark to identify over-sized pin when installing. Oversize pin can be installed tightly only once. If over sized pin is removed, the entire rotor assembly must be replaced.

NOTE 5: Units with separate shield requires index #13 screw. All new muffler cap A-95428 includes a shield welded to cap.

NOTE 6: Module 94711 Includes: Items 15 & 19.

XL-2S/SL
XL-2S
FIGURE 3



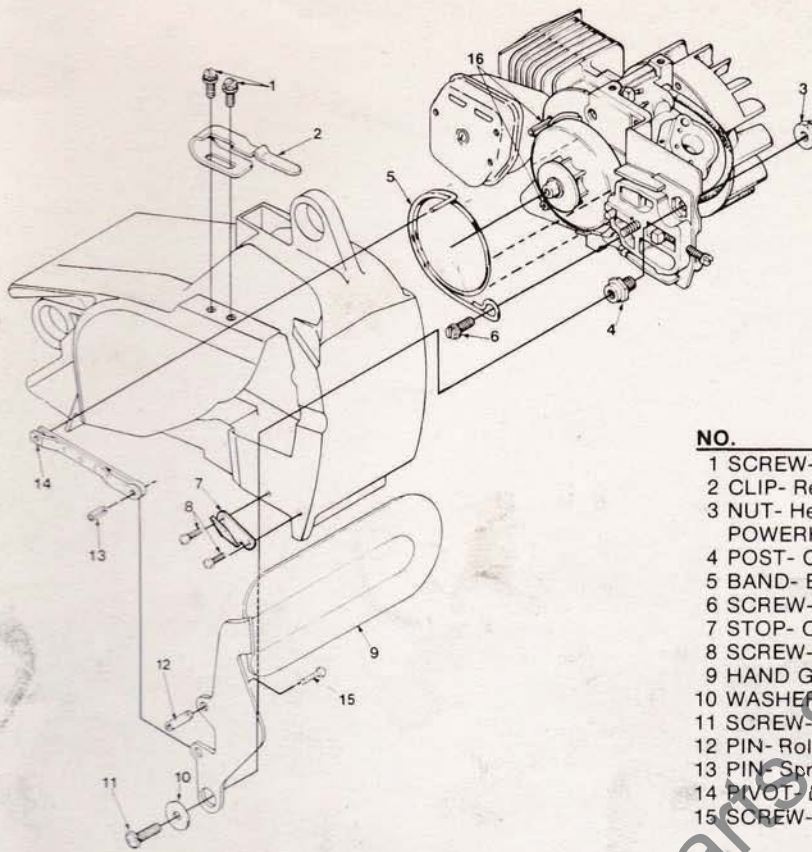
After screw (80220-2, Index #19) has been placed through adjusting pin (69254-1A, Index #18) the end of the screw should be crimped. This will prevent the screw from backing out.

NO.	DESCRIPTION	PART NO.	QTY.
1	PISTON & PIN Includes:	A-69393	1
2	RING- Piston retaining	65261	2
3	PISTON RING	69312	1
4	CRANKCASE & CYLINDER (SL only)	A-95096	1
	CRANKCASE & CYLINDER (Solid state)	A-95071	1
	CRANKCASE & CYLINDER (Point ignition)	A-69421-B	1
	Includes:		
	SCREW- Tapping pan (Not Shown)	93932	1
5	SCREW- Pan hd., 6-32 x 3/8	80571	3
6	COVER- Oil pump	69224-1C	1
7	SPRING- Oil pump	69447	1
8	GASKET- Oil pump	69244-1	2
9	PLUNGER- Oil pump	A-12356-B	1
10	BODY- Oil pump	69343-1	1
11	BALL- Check valve	60051	1
12	SPRING- Check valve	68570	1
13	FITTING- Oil line	70204	2
14	FITTING- Tube	69833	2

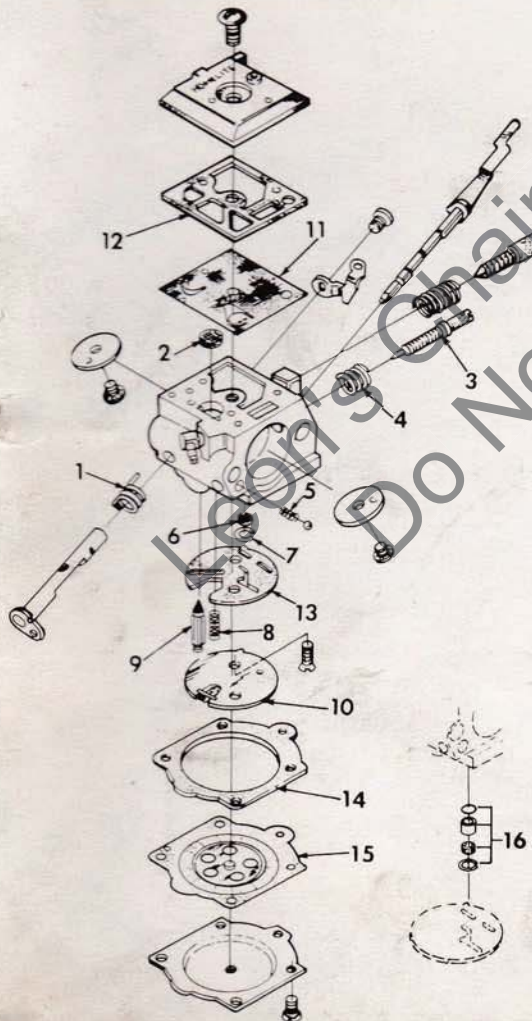
NO.	DESCRIPTION	PART NO.	QTY.
15	LINE- Oil	70161	1
16	BOLT- Guide bar	69195	1
17	SCREW- Sem hex hd., 8-32 x 1	88044	4
18	PIN- Adjusting	69254-1A	1
19	SCREW- Adjusting fil. hd. 8-32 x 1	80220-2	1
20	GASKET- Intake manifold	69143	1
21	SEAL	94638	2
22	SPACER- Seal	69407	2
23	BEARING- Needle	12530	2
24	WASHER- Thrust	69093-A	2
25	CRANKSHAFT- (Solid state)	A-94712	1
	CRANKSHAFT- (Point ignition)	A-70352	1
26	KEY- Magneto	69250	1
27	WASHER- Lock #10	83006-1	2
28	SCREW- Hex hd. (10-32 x 2 1/4)	80481	2
29	ELEMENT- Air filter	70566	1
30	MANIFOLD- Intake	A-69373-A	1
31	GASKET- Carburetor	65016	1
32	CARBURETOR	A-94054	1
33	CUP- Air filter	70557	1
34	RETAINER- Air filter	70556	1

XL-2S/SL
XL-2S

**XL-2S/SL WITH
CHAIN BRAKE**



NO.	DESCRIPTION	PART NO.	QTY.
1	SCREW- Hex hd w/washer 8-32 x 3/8	88026	2
2	CLIP- Retaining	70732	1
3	NUT- Hex (3/8 - 24)	81192	1
	POWERHEAD (see figure 3 for breakdown)		
4	POST- Chain brake	70636	1
5	BAND- Brake	70637	1
6	SCREW- Hex (10-24 x 1/2) w/washer	88049	1
7	STOP- Chain	93649	1
8	SCREW- (8-32 x .500)	88042	2
9	HAND GUARD	A-94600	1
10	WASHER- Flat	70632	1
11	SCREW- (10-32 x 1/2)	82166	1
12	PIN- Roll (3/16 x 9/16)	93069	1
13	PIN- Spring (18 x 1/4)	57721	1
14	PIVOT- Link	A-70767	1
15	SCREW- Drive	80001	1

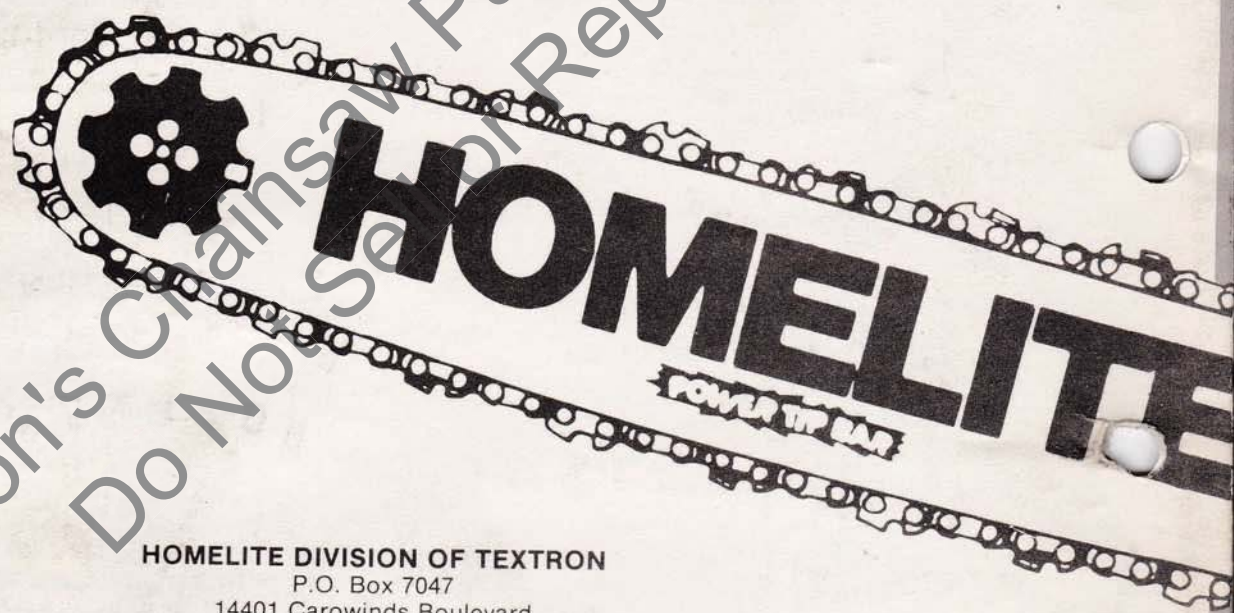


CARBURETOR
HDC-49
A-94054

- 94061-A REPAIR KIT (Includes: 1-15)
- 94701 GASKET/DIAPHRAGM KIT (Includes: 11-15)
- 93910 CHECK VALVE REPAIR KIT (#16)
- 94057 CIRCUIT PLATE- High altitude .029 (Not shown)

Leon's Chainsaw Parts & Repair
Do Not Sell or Reproduce

1184GY



HOMELITE DIVISION OF TEXTRON
P.O. Box 7047
14401 Carowinds Boulevard
Charlotte, N.C. 28217

HOMELITE **TEXTRON**

Homelite Division of Textron Inc.