

HOMELITE

XL-130

CHAIN SAW

Leon's Chainsaw Parts & Repair
Do Not Sell or Reproduce



TERRY INDUSTRIES

A DIVISION OF **extron** CANADA, LIMITED
180 Labrosse, Ave., Pointe Claire, Que.



XL-130

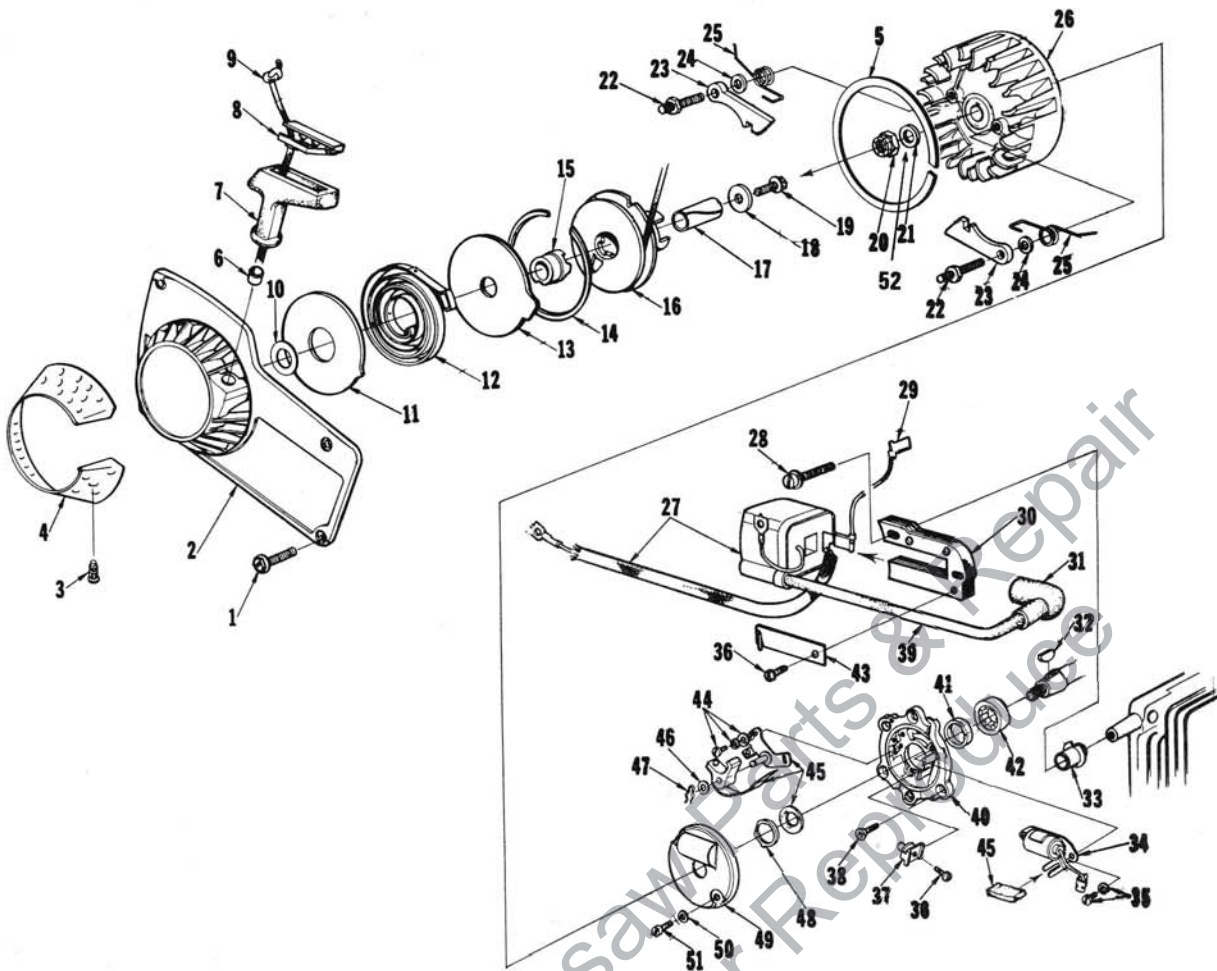


FIGURE 1

No.	Description	Part No.	Qty.	No.	Description	Part No.	Qty.
1	SCREW-hex, 10-32 x 1/2	80648	4	*27	COIL-ignition	64091-T	1
2	HOUSING-fan	A-67192-A	1	28	SCREW-coil core	64021	2
3	Includes: STUD-drive	67191	4	29	LEAD-ground to switch	A-63939	1
4	SCREEN-fan housing	65491	1	30	CORE-coil	54422	1
5	RING-air flow	67222	1	31	TERMINAL-spark plug	A-33055	1
6	BUSHING-starter rope	59313	1	32	KEY-woodruff	75078	1
7	GRIP-starting rope	64155-A	1	33	RETAINER-lead	64301	1
* 8	INSERT-rope retaining	68837	1	34	CONDENSER & CLAMP	64086	1
9	ROPE-starter	63869	1	35	SCREW-condenser clamp	55411	2
10	WASHER	67185	1	36	SCREW	64090	2
11	SHIELD-spring (inner)	63713	1	37	BLOCK-terminal	64088	1
12	SPRING-rewind	63870	1	38	SCREW-back plate retainer	65321	5
13	SHIELD-spring (outer)	63714	1	39	LEAD-high tension	58966	1
14	RING-shield retaining	63875	1	40	PLATE-back	A-68142	1
15	LOCK-spring	64948	1	41	Includes: SEAL	58688-A	1
16	PULLEY & CUP ASSEMBLY	A-63952-T	1	42	BEARING-roller	67395	1
17	BUSHING-starter post	64374	1	43	CLIP-coil retaining	54423	1
18	WASHER-retaining	63606	1	44	SCREW-breaker clamp	76421	2
19	SCREW-hex, 10-32 x 1/2	80648	1	45	POINT-set w/felt	A-64087	1
20	NUT-jam, 5/16-24	122168	1	46	Includes: WASHER-post	28028	1
21	WASHER-flat, 5/16	84065-1	1	47	CLIP-post	28008	1
22	STUD-shoulder	63877	2	48	RETAINER-felt	64089	1
23	PAWL-starter	64442	2	49	COVER-breaker box	A-63928	1
24	WASHER-lock	83056	2	50	WASHER-flat #6	84018	2
25	SPRING-starter pawl	58758-2	2	51	SCREW-cover	64085	2
26	ROTOR-magneto	63637	1	52	WASHER, lock	83030	1

*Denotes new parts

XL-130

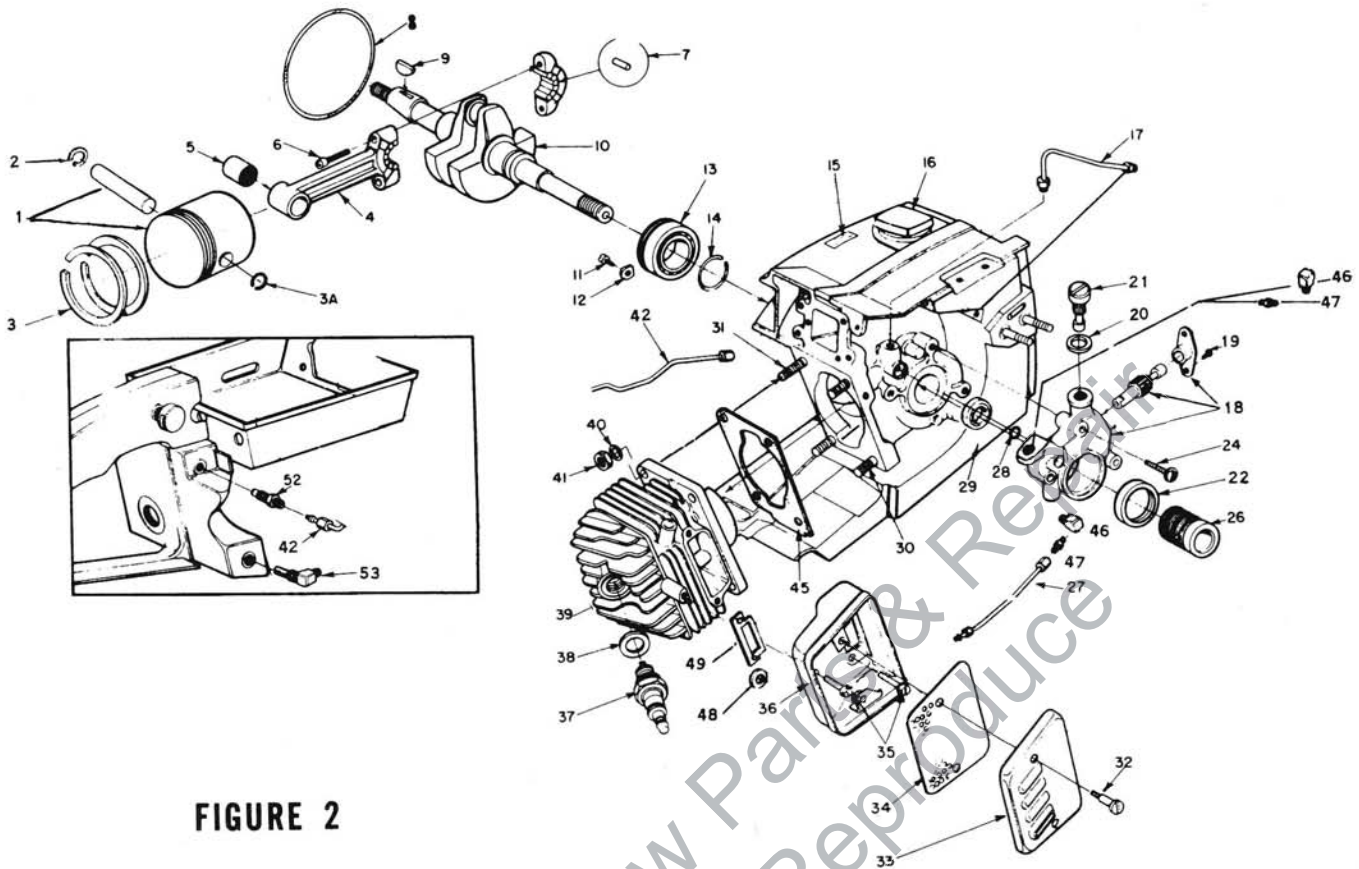


FIGURE 2

No.	Description	Part No.	Qty.	No.	Description	Part No.	Qty.
1	KIT, PISTON	A-121690	1	26	WORM-oil pump	63228	1
2	Includes: RING - Retaining	75120	1	27	LINE-oil	A-121734	1
3	Ring-piston	59436	2	28	"O" RING	59074	1
3A	RING-retaining	64818	1	29	SEAL	58308-A	1
4	ROD-connecting	A-68498	1	30	STUD-cylinder (short)	55871	3
5	Includes: BEARING-needle	67408	1	31	STUD-cylinder (long)	63868	1
6	SCREW	80541	2	* 32	SCREW-shoulder	64133-A	2
7	ROLLER-Needle (set of 25)	A-68495	1	33	CAP-muffler	64125-1	1
8	"O"-RING crankcase	58785	1	34	BAFFLE-muffler	64126	1
9	KEY	75078	1	35	SCREW-hex hd., No. 12 - 24 x 5/8"	80676	3
10	CRANKSHAFT	68780	1	* 36	BODY-muffler	A-64130-2	1
11	SCREW-bearing retainer	59704	2	* 37	SPARK PLUG (J-7)	122066	1
12	WASHER - special	63905	2	38	Includes: GASKET	25038	1
13	BEARING - ball	63865	1	39	CYLINDER	67124-1	1
14	RING - retaining	58319-A	1	40	WASHER - lock 1/4"	83009	4
16	CAP-fuel filler	A-65283-AT	1	41	NUT-hex, 1/4 - 28	81065-2	4
17	LINE-oil (Outer)	A-63919	1	42	LINE ASSY, Oil	A-121733	1
18	Pump-Automatic oil	A-121751	1	45	GASKET-cylinder	65829	1
19	Includes: Screw, Pan. hd., #4-40x1/4	80919	2	46	CONNECTOR Elbow 90%	31734	1
20	Gasket, cam screw	59736	1	47	FITTER Straight	65696	1
21	Screw, cam	64102-A	1	48	WASHER-Flat	84008	1
22	Seal, Felt	64393	1	49	Gasket-Muffler	121474	1
24	SCREW-pan hd., No. 8-32 x 7/8	80568	3	52	VALVE-check	A65948-T	1
				53	FILTER, Oil	A-64741-T	1

* Denotes new parts

SPECIAL TOOLS (available on order)					
A-122140	WRENCH-combination	23846-2	ANVIL-roller bearing disassembly	A-24057	BEARING REMOVER-(back plate)
22820-5	COLLAR-bearing installation (bearing to shaft)	A-122055	PULLER	24076	SLEEVE-seal protection (crankcase side)
22828	PLIERS-retaining ring	A-23949	TOOL-piston pin removal	24230	DRIVER-hand, pozidriv
23136-1	SLEEVE-bearing and shaft installation	A-23960	BRACKET-rotor removal	24173	DRIVER-check valve installation
23528	WRENCH-socket screw (connecting rod)	23972	SLEEVE-seal installation		
23756	PLUG-needle bearing (connecting rod)	24006-2	PLATE-shaft alignment	120875	BIT-pozidriv No. 2
23759	SLEEVE-seal protection (back plate)	A-24051	JACKSCREW (bearing to shaft to crankcase)	ACCESSORIES	
		24054	PLUG-seal assembly (crankcase)	65543-1	HEAT EXCHANGER
		24055	PLUG-bearing and seal assembly (back plate)	PAINT	
				23475	SPRAY CAN-red paint

XL-130

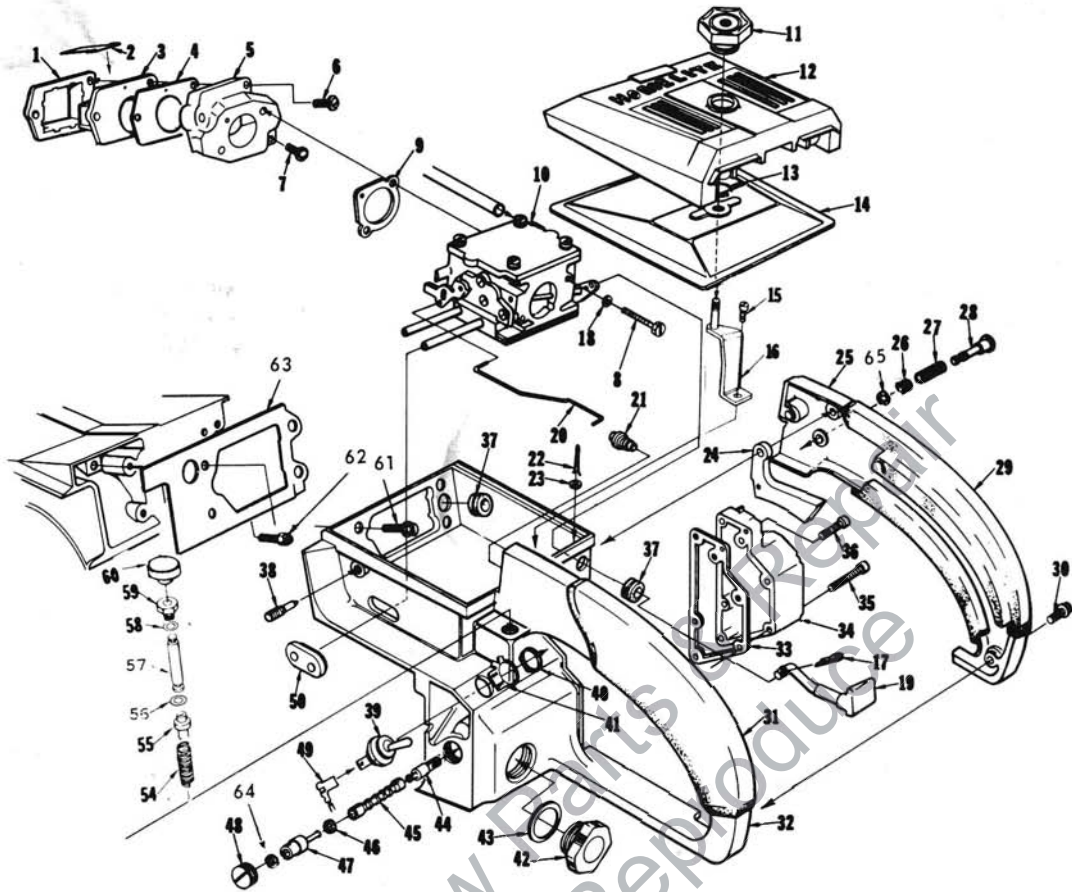


FIGURE 3

No.	Description	Part No.	Qty.	No.	Description	Part No.	Qty.
1	RETAINER-reed valve	64253-A	1	32	HANDLE-throttle	A-68483-T	1
2	REED-valve	59678-B	4		Includes:		
3	SEAT-reed valve	64252	1	33	GASKET-oil tank	67265	1
4	GASKET-reed valve seat	64266-T	1	34	COVER-oil tank	A-68120	1
*5	MANIFOLD-intake	A-67502-A	1		Includes: PLUG-pipe (not shown)	59571	1
6	Includes: SCREW-pan, 8-32 x 1-1/4	82174	2	35	SCREW-fil, 8-32 x 1-5/8	82153	3
7	SCREW-pan, 8-32 x 1	82173	1	36	SCREW-fil, 8-32 x 3/4	82156	3
8	SCREW-hex, 10-32 x 1-7/8	82179	2	37	GROMMET	64862	2
9	GASKET-carburetor	67631	1	*38	SCREW-idle adjustment	65522-A	1
10	CARBURETOR	A-121913	1	39	SWITCH	A-63938	1
11	NUT-cover mounting	A-67627	1	40	Includes: NUT	72084-A1	1
12	COVER-air filter	63183-4	1	41	PLATE-"On-Off"	63910	1
13	RING-retaining	58319-A	1	42	CAP-oil (vented)	A-65284-T	1
14	FILTER ELEMENT-air	A-63955-A	1	43	Includes: "O" RING	65133	1
15	SCREW-hex, 12-24 x 1/2	80821	1		VALVE-vent (not shown)	63718	1
16	BRACKET-air filter cover	A-63576	1	44	FILTER-oil (manual)	A-64293	1
17	PIN-cotter	86324	1	45	LINE-flexible oil	64356	1
18	WASHER-lock, #10	83046	2	46	GASKET	59736	1
19	ROD-choke	67000-1	1	47	FITTING-check valve	A-63936	1
20	ROD-throttle	63896-A	1	48	SCREW-set	63113	1
21	BOOT-throttle rod	67634	1	49	LEAD-ground	A-63939	1
22	PIN-cotter	86301	1	50	GROMMET-"Hi-Lo"	58858	1
23	WASHER-felt	63290	1	54	SPRING-plunger	65080	1
24	TRIGGER-throttle	63212-A	1	55	PLUNGER-oil pump	65081-AT	1
25	COVER-throttle handle	63599-5	1	56	"O" RING	58406	1
26	BUSHING-throttle lock	59064	1	57	ROD plunger	A-121658	1
27	SPRING-throttle lock	58405	1	58	Includes: "O" RING	59074	1
28	PIN-throttle lock	58924-4	1	59	NUT-plunger	121293	1
29	GRIP-throttle handle cover	68467	1	60	BUTTON-oil pump	57289-1	1
30	SCREW-pan, 8-32 x 1/2	80560	2	61	SCREW-hex, 12-24 x 5/8	80676	4
31	GRIP-throttle handle	68466	1	62	VENT-fuel tank	A65608	1
				63	GASKET-throttle handle	64267-T	1
				64	GROMMET	64474	1
				65	RING retaining	58409	1

* Denotes new parts

ALWAYS FURNISH MODEL AND SERIAL NUMBER WHEN ORDERING PARTS.

XL-130

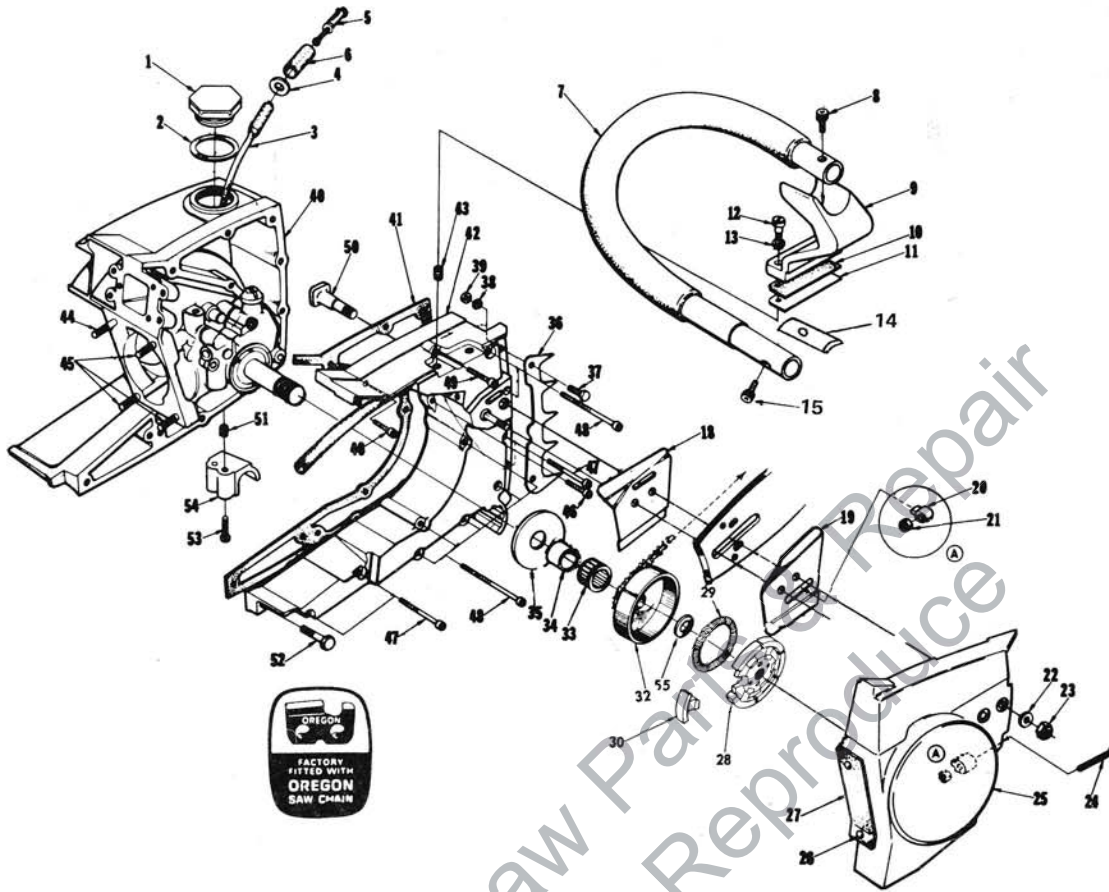


FIGURE 4

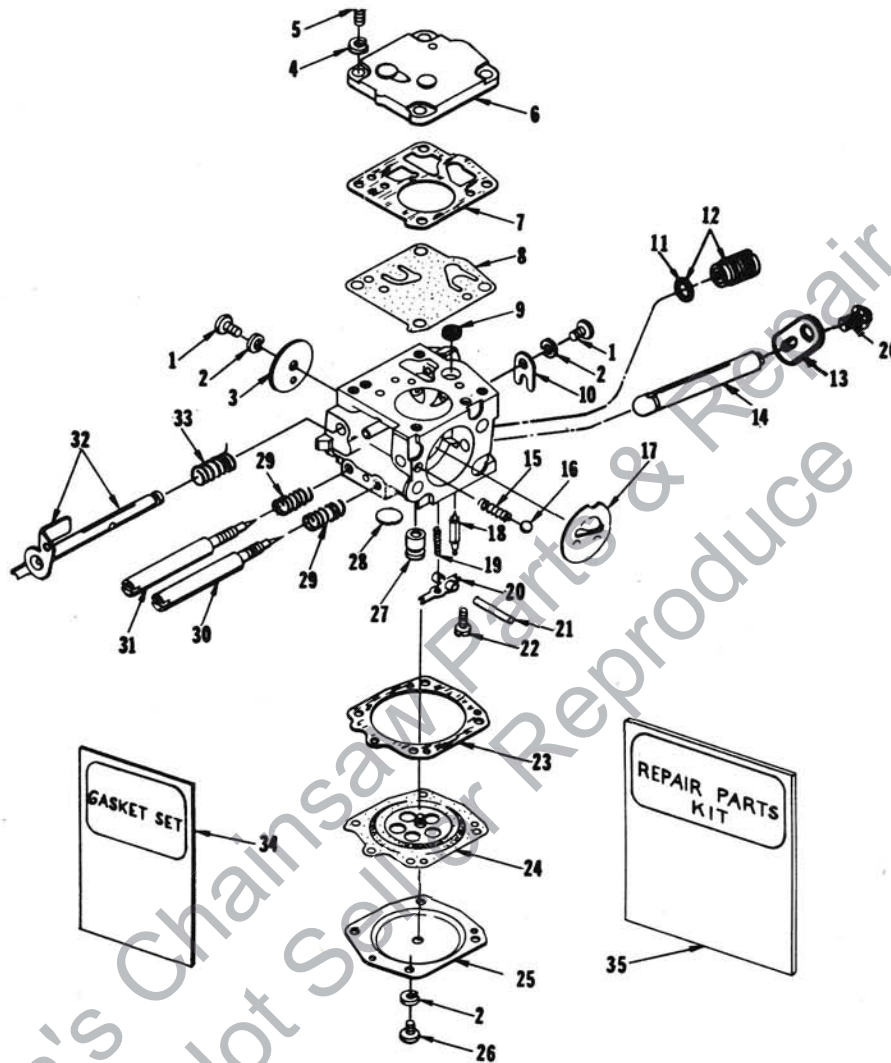
No.	Description	Part No.	Qty.	No.	Description	Part No.	Qty.
1	CAP-fuel filler	A-65283-AT	1	33	BEARING-cage	64333	1
2	Includes: GASKET	68961	1	34	RACE-inner	63990	1
3	LINE-fuel	63544	1	35	WASHER-thrust (inner)	63860	1
4	WASHER	64182	1	36	BUMPER-spiked	A-64722	1
5	FILTER-fuel	A-63920	1	37	Includes: SCREW-hex, 12-24 x 5/8	80676	2
6	Includes: FILTER-felt	64083	1	38	WASHER-lock, no. 12	83056	2
* 7	HANDLE BAR-flush cut	A-122135	1	39	NUT-hex, 12-24	81068	2
8	SCREW-Fil., 10-32 x 1	80041	1	*40	CRANKCASE & TANK	A-68439-AT	1
9	BRACKET-handle bar	A-68341	1	Includes: PIN-dowel (not shown)	71430	2	
10	PAD-bracket	64610	1	PIN-dowel (not shown)	65365	2	
11	PLATE-handle bar bracket	65586	1	SEAL-(see fig. 2,			
12	SCREW-shoulder	68338	2	Index No. 28)	58308-A	1	
13	GROMMET-handle bar bracket	64474	2	*41	GASKET-fuel tank	65364-A	1
*14	SPACER	122132-1	1	*42	COVER-fuel tank	A-68040-AT	1
*15	SCREW	122064	1	Includes:			
18	PLATE-guide bar (inner)	67300	1	43	INSERT-taplock	72489	2
19	PLATE-guide bar (outer)	67299	1	44	STUD-cylinder (long)	63868	1
20	PIN-bar adjusting	65768-1	1	45	STUD-cylinder (short)	55871	3
21	NUT-lock, 10-32	81109-2	1	46	SCREW-fil, 8-32 x 15/16	82151	2
22	WASHER-flat, 5/16	84032	2	47	SCREW-fil, 8-32 x 1-7/8	82154	3
23	NUT-hex, 5/16-18	81196	2	48	SCREW-fil, 8-32 x 2-3/16	82155	7
24	SCREW-guide bar adjusting	65175-A	1	49	SCREW-fil, 8-32 x 1-1/4	82152	1
25	COVER-drivecase	A-64620-2BT	1	50	BOLT-guide bar	67193	2
26	Includes: RIVET-oval head	85016	2	51	INSERT-taplock	72489	2
27	SHIELD-sawdust	64618	1	52	SCREW-hex, 12-24 x 7/8	80891	1
*28	SPIDER-clutch	122042-1	1	53	SCREW-pan, 10-32 x 5/8	80572	2
29	SPRING-clutch	67441	2	54	STOP-handle bar	67506-2	1
*30	SHOE-clutch	122048	6	55	WASHER, Thrust	121901	1
32	SPROCKET & DRUM-3/8 pitch, 7 tooth	A-64908	1		HANDLE BAR (wrap-around) - optional	A-122163-1	

* Denotes new parts

ALWAYS FURNISH MODEL AND SERIAL NUMBER WHEN ORDERING PARTS.

XL-130

A-69101
HS-104A



No.	Description	Part No.	Qty.	No.	Description	Part No.	Qty.
1	SCREW-rd., 4-40 x 3/16	† 80264	2	18	NEEDLE-inlet	59717	1
2	WASHER-lock, #4	† 83008-1	6	19	SPRING-control lever	† 55759	1
3	SHUTTER-throttle	67994	1	20	LEVER-inlet control	† 59716	1
4	WASHER-lock, #6	83024	4	21	PIN-control lever fulcrum	† 58977	1
5	SCREW-fil, 6-32 x 3/8	80275	4	22	SCREW-oval, 4-40 x 1/4	† 65798	1
6	COVER-fuel pump diaphragm	58975	1	23	GASKET-main diaphragm	58978	1
7	GASKET-pump diaphragm	58981	1	24	DIAPHRAGM-main control	† 58988	1
8	DIAPHRAGM-fuel pump	† 58980-R	1	25	COVER-main diaphragm	58979	1
9	SCREEN-fuel inlet	† 58974	1	26	SCREW-rd., 4-40 x 1/4	80591	5
10	CLIP-throttle shaft retaining	58982	1	27	VALVE-check	69154	1
11	GASKET	74060	1	28	PLUG-extension, 11/32 dia.	† 58991	1
12	VALVE-governor	A-69155	1	29	SPRING-adjustment needle	† 73075	2
13	LEVER-choke	68397	1	30	NEEDLE-main adjustment	69150	1
14	SHAFT-choke	65799	1	31	NEEDLE-idle adjustment	† 69149	1
15	SPRING-choke friction	73264	1	32	SHAFT-throttle w/lever	A-69153	1
16	BALL-choke friction	25527	1	33	SPRING-throttle opening	† 59460	1
17	SHUTTER-choke	58984	2	34	GASKET-set	† 67866	1
			1	35	REPAIR KIT	67870	1

† Included in Repair Kit

* Denotes new parts