

**HOMELITE**

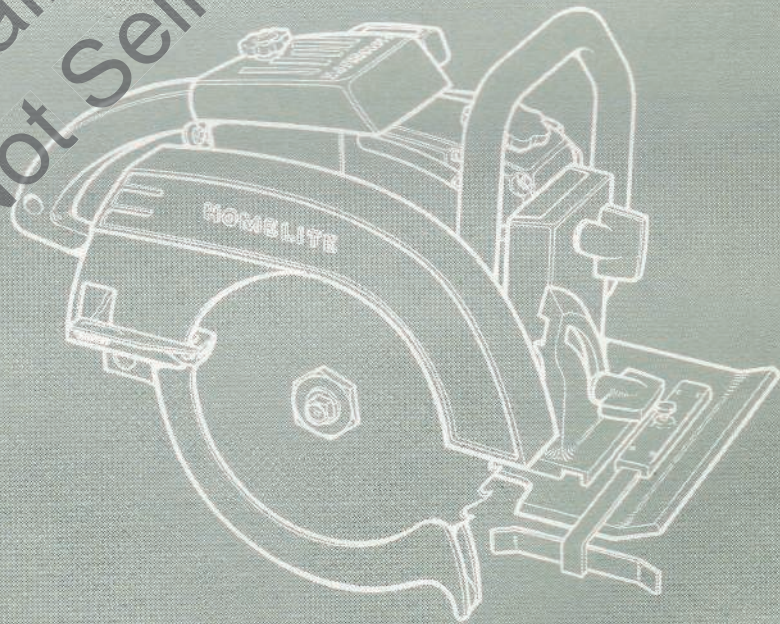
**XL**

**120**

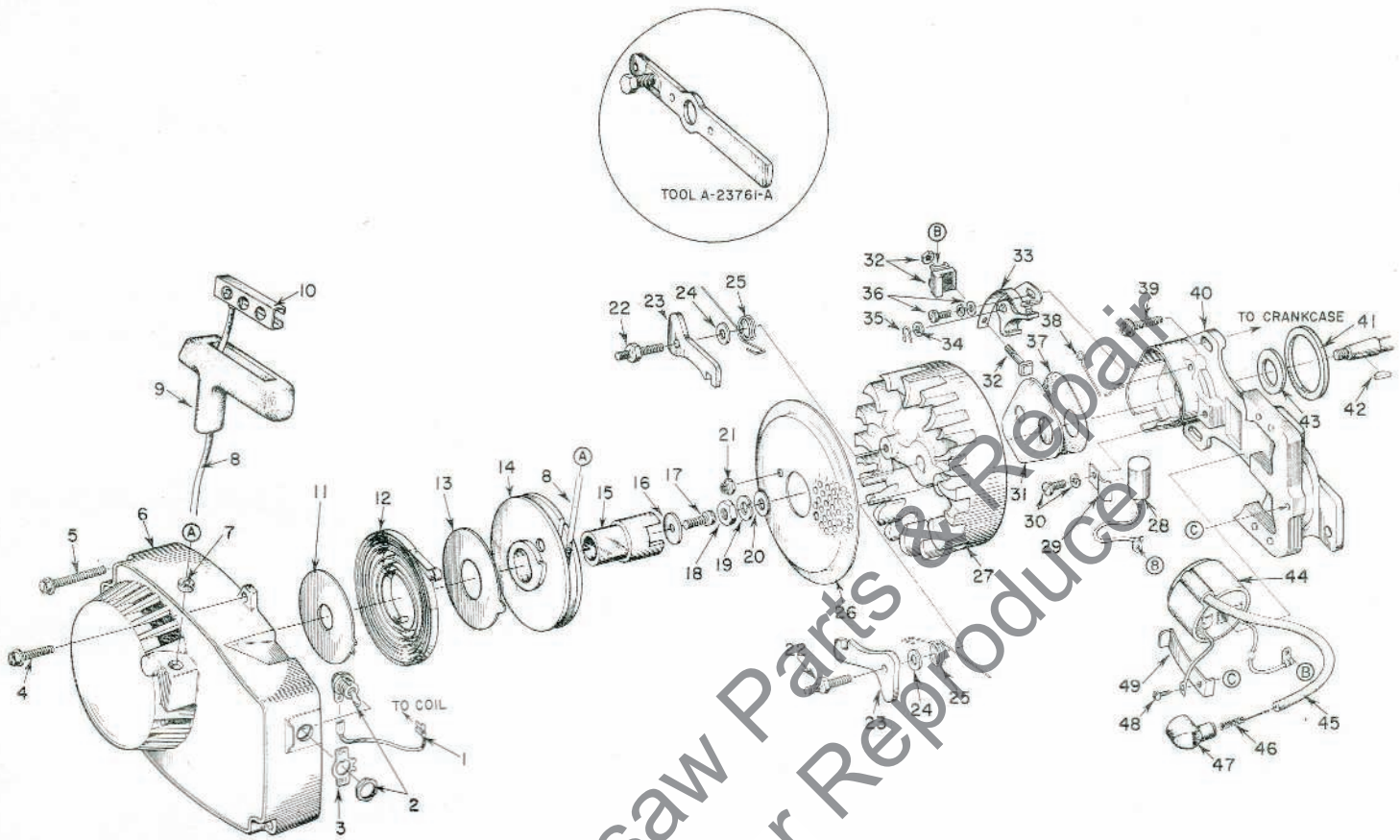
*Circular Saw*

GASOLINE ENGINE - DRIVEN

*Leon's Chainsaw Parts & Repair  
Do Not Sell or Reproduce*



**PARTS LIST**



**FIGURE 1**

Index No.	Part No.	Description	No. Req'd	Index No.	Part No.	Description	No. Req'd
1	A-59031	LEAD - ground w/terminals	1	26	58765	SCREEN - starter	1
2	A-57650-3	SWITCH - w/nut	1	27	58809	ROTOR - magneto	1
3	72085-A	PLATE - "ON OFF"	1	28	63250	CONDENSER	1
4	80676	SCREW - hex, 12-24 x 5/8	1	29	59622	CLAMP	1
5	58963	SCREW - hex, 12-24 x 1-11/16	3	30	30261	SCREW GROUP - condenser	1
6	A-59824	HOUSING - fan	1	31	58811	COVER - breaker box	1
7	59313	Includes: BUSHING - rope	1	32	A-58934	BLOCK - terminal	1
8	58806	ROPE - starter	1	33	A-58914	POINTS - w/felt	1
9	58915	GRIP - rope	1	34	28028	Includes: WASHER - point	1
10	58847	INSERT	1	35	28008	CLIP - post	1
11	59638-A	SHIELD - spring (inner)	1	36	76421	SCREW GROUP - points	1
12	58764	SPRING - recoil	1	37	58810	GASKET - cover	1
13	59639-A	SHIELD - spring (outer)	1	38	76413	SPRING - cover (clip)	1
14	58759-A	PULLEY - starter	1	39	80899	SCREW - hex, 12-24 x 9/16	3
15	58760	CUP - starter	1	40	58875-A	BOX - breaker w/core	1
16	58763	WASHER - retaining	1	41	59538	GASKET	1
17	80492	SCREW - socket, 10-32 x 1/2	1	42	75078	KEY - rotor	1
18	81117	NUT - 5/16-24	1	43	59760	SEAL - felt (part of #33)	1
19	83002	WASHER - lock, 5/16	1	44	58874	COIL	1
20	84056	WASHER - flat, 5/16	1	45	58966	LEAD - hi-tension	1
21	81109	NUT - lock, 10-32	3	46	58919	SPRING - contact	1
22	58757-A	STUD - shoulder	2	47	58918	BOOT	1
23	58756	PAWL - starter (finger)	2	48	58872	SCREW - clip	1
24	58851	WASHER	2	49	58873	CLIP - coil retaining	1
25	58758	SPRING	2				



# CIRCULAR SAW

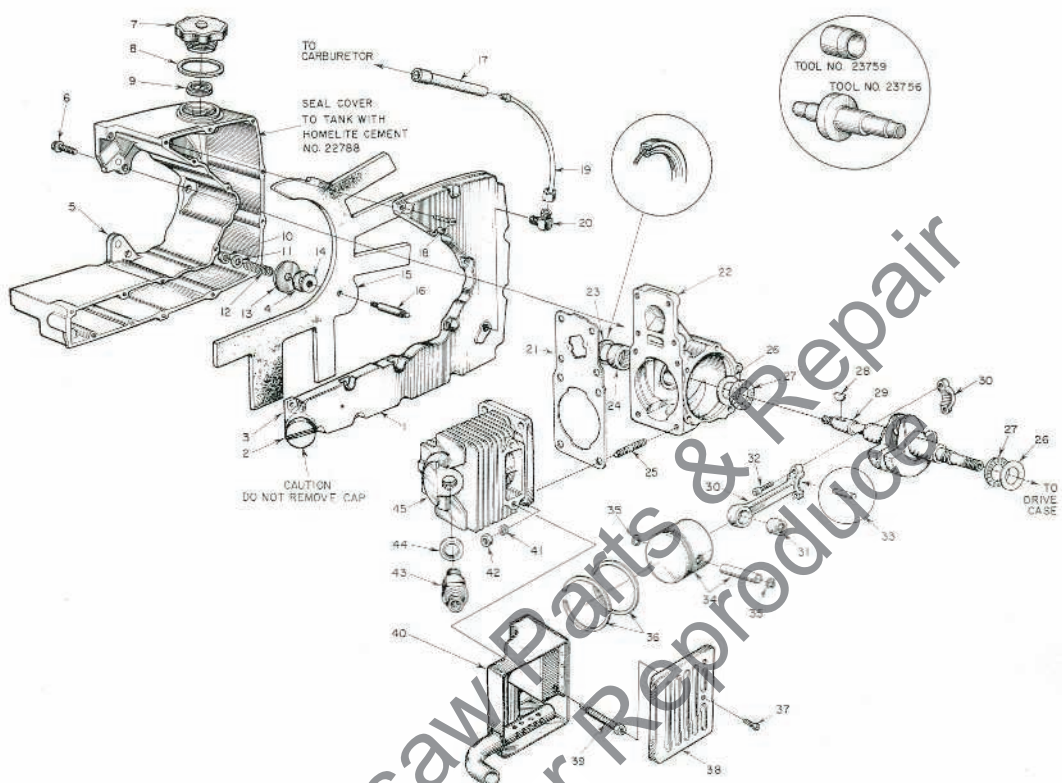


FIGURE 2

Index No.	Part No.	Description	No. Req'd
1	A-63271	COVER - fuel tank . . . . .	1
2	A-56580-1	Includes: CAP - slotted . . . . .	1
3	56607	w/GASKET . . . . .	1
4	59457	WASHER - felt . . . . .	1
5	58732-2	TANK - fuel . . . . .	1
6	80867	SCREW - hex, 12-24 x 3/4 . . . . .	5
7	A-59956	CAP - fuel filler . . . . .	1
8	58957	Includes: GASKET . . . . .	1
9	56865	VALVE . . . . .	1
10	81109	NUT - lock, 10-32 . . . . .	1
11	84003-1	WASHER - flat, #10 . . . . .	1
12	58867	SPRING - compression . . . . .	1
13	58866	WASHER - wick . . . . .	1
14	58865	GASKET . . . . .	1
15	58862	WICK - fuel pick-up . . . . .	1
16	58519	STUD - wick . . . . .	1
17	58958	LINE - fuel, flexible . . . . .	1
18	80513	SCREW - rd., #6 x 1/2 . . . . .	16
19	A-59155	LINE - fuel . . . . .	1
20	58995	FITTING . . . . .	1
21	59771	GASKET - cylinder . . . . .	1
22	A-58799	CRANK CASE . . . . .	1
23	58688-A	Includes: SEAL . . . . .	1

Index No.	Part No.	Description	No. Req'd
24	58956	BEARING . . . . .	1
25	55871	STUD . . . . .	4
26	58725	RACE - thrust bearing . . . . .	2
27	58726	BEARING - needle thrust . . . . .	2
28	75078	KEY - rotor . . . . .	1
29	58439	CRANK SHAFT . . . . .	1
30	A-58769	ROD - connecting . . . . .	1
31	58724	Includes: BEARING . . . . .	1
32	80889	SCREW - socket . . . . .	2
33	A-58864	ROLLERS - set (28) . . . . .	1
34	A-59468	PISTON AND PIN . . . . .	1
35	75120	Includes: RING - retaining . . . . .	2
36	59436	PISTON RING . . . . .	2
37	80579	SCREW - pan, 10-32 x 3/8 . . . . .	2
38	63096	CAP - muffler . . . . .	1
39	63099	STUD - muffler . . . . .	2
40	A-63172	MUFFLER . . . . .	1
41	83009	WASHER - lock, 1/4 . . . . .	4
42	81065-2	NUT - 1/4-28 . . . . .	4
43	59654-S	SPARK PLUG . . . . .	1
44	25038	Includes: GASKET . . . . .	1
45	58706-A1	CYLINDER . . . . .	1

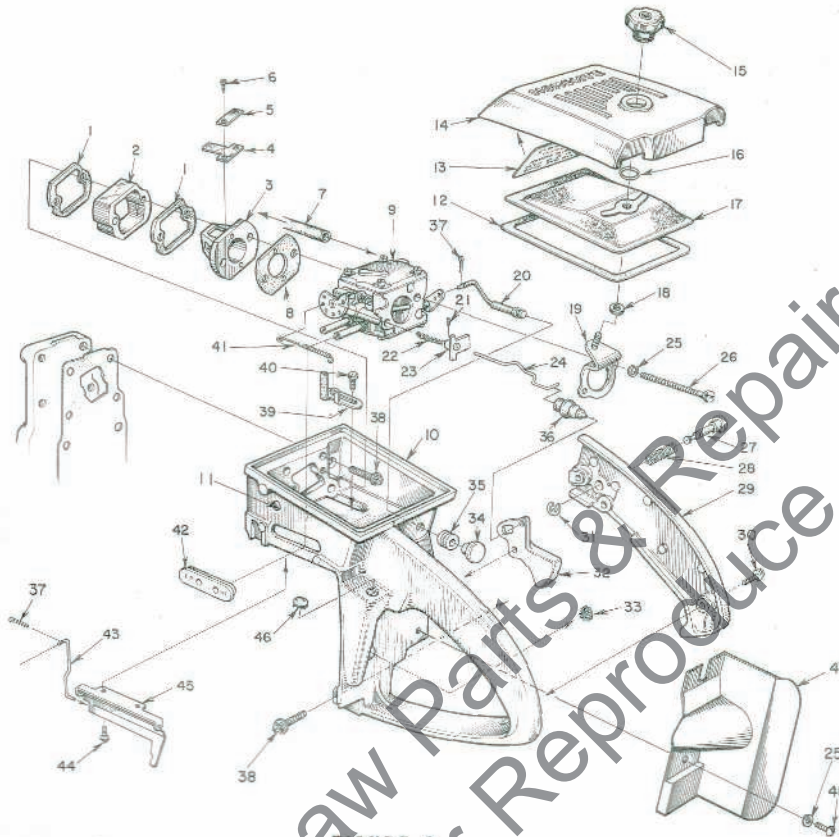


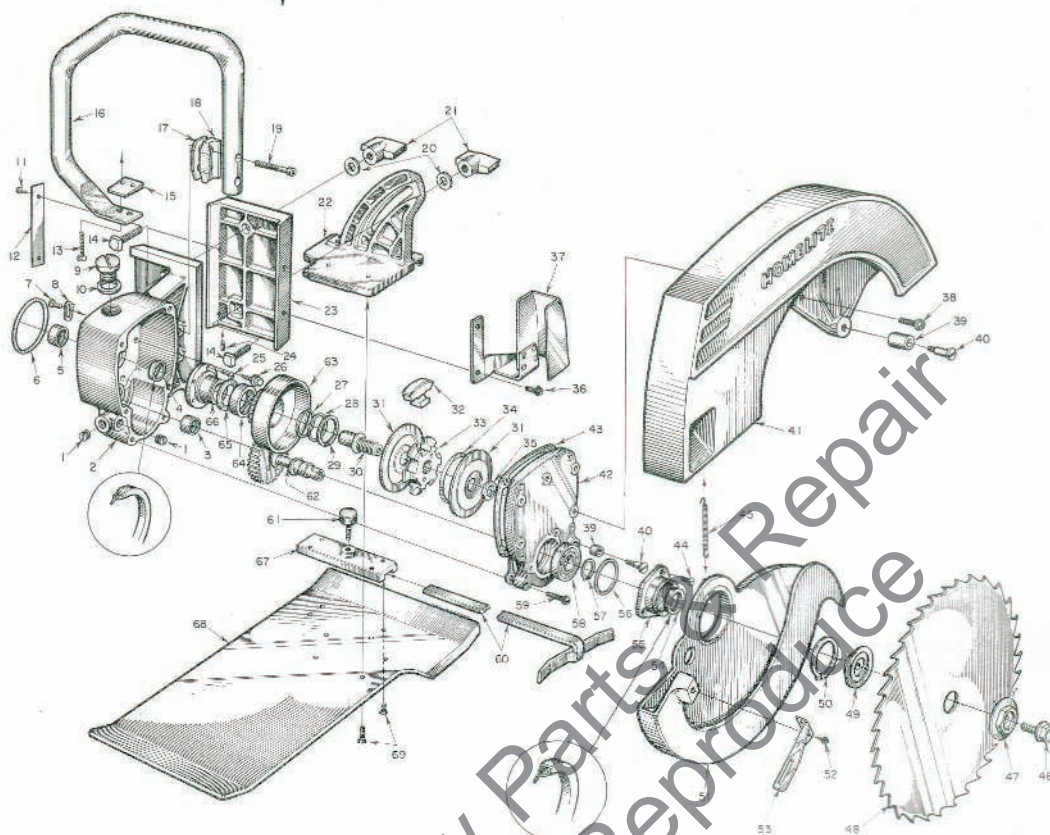
FIGURE 3

Index No.	Part No.	Description	No. Req'd	Index No.	Part No.	Description	No. Req'd
1	59274	GASKET	2	25	83046	WASHER - lock, #10	2
2	59718	SPACER	1	26	80921	SCREW - hex, 10-32 x 2-11/16	2
3	59677	SEAT - reed valve	1	27	58924	PIN - throttle lock	1
4	59678-A	VALVE - reed	1	28	58405	SPRING - lock	1
5	59679	SPRING - valve	4	29	A-59213	COVER - handle	1
6	80918	SCREW - pan, 4-40 x 1/8	8		59064	Includes: BUSHING - pin	1
7	58958	LINE - fuel, flexible	1	30	80560	SCREW - pan, 8-32 x 1/2	2
8	59722	GASKET - carburetor	1	31	58409	RING - retaining	1
9	A-59535-B	CARBURETOR - See Note	1	32	58859	TRIGGER - throttle	1
10	A-63262-A	HANDLE & HOUSING	1	33	59223	PLUG - button	1
11	63303	Includes: PLUG - screw	1	34	57289-1	BUTTON - rod	1
12	58884	GASKET	1	35	58362	GROMMET	1
	86301	(not shown) PIN - cotter	1	36	58348	BOOT - rod	1
13	59221	INSTRUCTIONS	1	37	86324	PIN - cotter	2
14	58773	COVER - air filter	1	38	80891	SCREW - hex, 12-24 x 7/8	5
15	A-58882	NUT - cover	1	39	A-63231	PLATE - speed adjusting	1
16	58319-A	RING - retaining	1	40	80575	SCREW - bind, 8-32 x 1/4	2
17	58774-1	FILTER ELEMENT	1	41	59242	SPRING - governor	1
18	58392-1	GASKET - stud	1	42	59770	GROMMET	1
19	A-59822	BRACKET - mounting	1	43	63214	LINK - governor	1
20	A-59826	ROD - choke	1	44	80658	SCREW - pan, 4-40 x 3/16	2
21	80893	SCREW - set, 4-40 x 1/8	1	45	A-59301-A	GOVERNOR - air vane	1
22	63240	SPRING - throttle rod	1	46	26587	PLUG - button	1
23	A-63227	COLLAR - throttle rod	1	47	A-63363	SHIELD - muffler	1
24	63171	ROD - throttle	1	48	80961	SCREW - rd. hd., 10-32 x 3/16	2

NOTE: Refer to Carburetor Parts List #23910. Use Repair Parts Kit #58972, Gasket Set #58971.

**SPECIAL TOOLS (available on order)**

Part No.	Description	Part No.	Description	Part No.	Description
22808	WRENCH - combination	23758	PLUG - seal (drive case, crank case)	23776	SLEEVE - ball bearing
22828	PLIERS - piston ret. ring			23780	PLUG - bearing (needle)
23788	PLIERS - bearing ret. ring	A-23696	WRENCH - spanner (spider)	23781	PLUG - seal
23795	PLIERS - blade shaft ring	A-23810	PLUG - bearing (drive gear)	23786	WRENCH - box
23796	PLIERS - clutch drum ring	A-23778	PULLER - ball bearing	23390	SLEEVE - seal
23528	WRENCH - socket screw (conn. rod)	23800	SLEEVE - seal	A-23858	FIXTURE - drive case
23756	PLUG - bearing (conn. rod)	A-23761-A	PULLER - rotor	23892	SPACER - use w/#23776
23757	PLUG - bearing (drive case, crank case)	23759	SLEEVE - seal	23785	WRENCH - socket



**FIGURE 1**

Index No.	Part No.	Description	No. Req'd	Index No.	Part No.	Description	No. Req'd
1	28097	PLUG - pipe . . . . .	2	36	80579	SCREW - pan, 10-32 x 3/8 . . . . .	2
2	A-59160	DRIVE CASE . . . . .	1	37	A-63070	DEFLECTOR . . . . .	1
3	59129	Includes: BEARING - needle . . . . .	1	38	80676	SCREW - hex, 12-24 x 5/8 . . . . .	5
4	58688-A	SEAL . . . . .	1	39	63149	BUMPER . . . . .	1
5	58956	BEARING - needle . . . . .	1	40	59141	SCREW - bumper . . . . .	1
6	58785	"O" RING . . . . .	1	41	59667	GUARD - stationary . . . . .	1
7	80307	SCREW - binder, 8-32 x 5/16 . . . . .	1	42	A-59738	COVER - drive case . . . . .	1
8	59139	POINTER - indicator . . . . .	1	43	59111-A	Includes: GASKET (cemented) . . . . .	1
9	A-56580-1	CAP - oil filler . . . . .	1	44	80313	SCREW - flat, 10-32 x 3/8 . . . . .	3
10	56607	Includes: GASKET . . . . .	1	45	63163	SPRING - return . . . . .	1
11	80658	SCREW - pan, 4-40 x 3/16 . . . . .	2	46	59224	BOLT - blade . . . . .	1
12	59694	INDICATOR . . . . .	1	47	63056	WASHER - outer w/hex . . . . .	1
13	80901	SCREW - flat, 12-24 x 1 . . . . .	2	48	63090	BLADE - saw . . . . .	1
14	80904	BOLT - square, 3/8-16 x 1-1/4 . . . . .	2	49	63055	WASHER - inner . . . . .	1
15	59117	SPACER - handle . . . . .	1	50	59126	RING - retaining . . . . .	1
16	A-59148	HANDLE . . . . .	1	51	A-63153	GUARD - rotating . . . . .	1
17	58149	PLATE - spacer . . . . .	1	52	80577	Includes: SCREW, 8-32 x 3/8 . . . . .	2
18	59116	SPACER - handle . . . . .	1	53	63205	LEVER . . . . .	1
19	80903	SCREW - socket, 1/4-20 x 1-1/2 . . . . .	2	54	56256	SEAL . . . . .	1
20	84069-1	WASHER - flat, 3/8 . . . . .	2	55	63032	RETAINER - bearing . . . . .	1
21	A-59115	KNOB - locking . . . . .	2	56	59136	"O" RING . . . . .	1
22	59088	PLATE - angle adjustment . . . . .	1	57	59128	RING - retaining . . . . .	1
23	59086-1	PLATE - vertical adjustment . . . . .	1	58	59135-S	BEARING - ball . . . . .	1
24	80514-2	SCREW - socket, 10-32 x 3/8 . . . . .	1	59	80583	SCREW - pan, 10-32 x 3/4 . . . . .	6
25	80157	SCREW - rd., 10-32 x 1/2 . . . . .	5	60	*A-59137	GUIDE - ripping . . . . .	1
26	80899	SCREW - hex, 12-24 x 9/16 . . . . .	5	61	*58658	Includes: SCREW - lock . . . . .	1
27	59121	WASHER - phenolic . . . . .	1	62	A-63157	SHAFT AND GEAR . . . . .	1
28	59122	WASHER - steel . . . . .	1	63	A-59212	GEAR AND DRUM . . . . .	1
29	59127	RING - retaining . . . . .	1	64	74121	Includes: BEARING - needle . . . . .	1
30	59138	EXTENSION - shaft . . . . .	1	65	59120	WASHER - thrust . . . . .	1
31	59145	COVER - clutch . . . . .	2	66	59248	RACE - inner (flanged) . . . . .	1
32	A-59123	SHOE - clutch . . . . .	6	67	63164	LOCK - ripping guide . . . . .	1
33	59125	SPIDER - clutch . . . . .	1	68	63142	BASE - saw . . . . .	1
34	55123-C	SPRING - clutch . . . . .	2	69	80668	SCREW - flat, 10-32 x 7/16 . . . . .	8
35	59144	NUT . . . . .	1				

\*ACCESSORY - See your Homelite Dealer.

ALWAYS FURNISH SAW MODEL AND SERIAL NUMBER WHEN ORDERING PARTS.

**You'll  
SPEED WORK  
and make  
MORE MONEY  
with...**

# **HOMELITE**

**SELF-PRIMING PUMPS**



**DEPENDABLE GENERATORS**



**POWERFUL ONE-MAN CHAIN SAWS**



**ONE-MAN CONCRETE VIBRATORS**



**ELECTRIC BUILDER'S HAMMERS**

Printed in United States of America

Part No. 23890

## **HOMELITE**

A **textron** DIVISION

**PORT CHESTER, N. Y.**

Illustrated in **INSPECTIVE** and  
prepared by **PURNELL COMPANY, INC.**  
Boston, Mass.