

PARTS LIST

REV. 2

HOMELITE[®]

CHAIN SAW

VI 200

TERRY INDUSTRIES

A DIVISION OF **extron** CANADA, LIMITED

180 Labrosse, Ave., Pointe Claire, Que.

PART NO. 122248

VI 200 Chain Saw

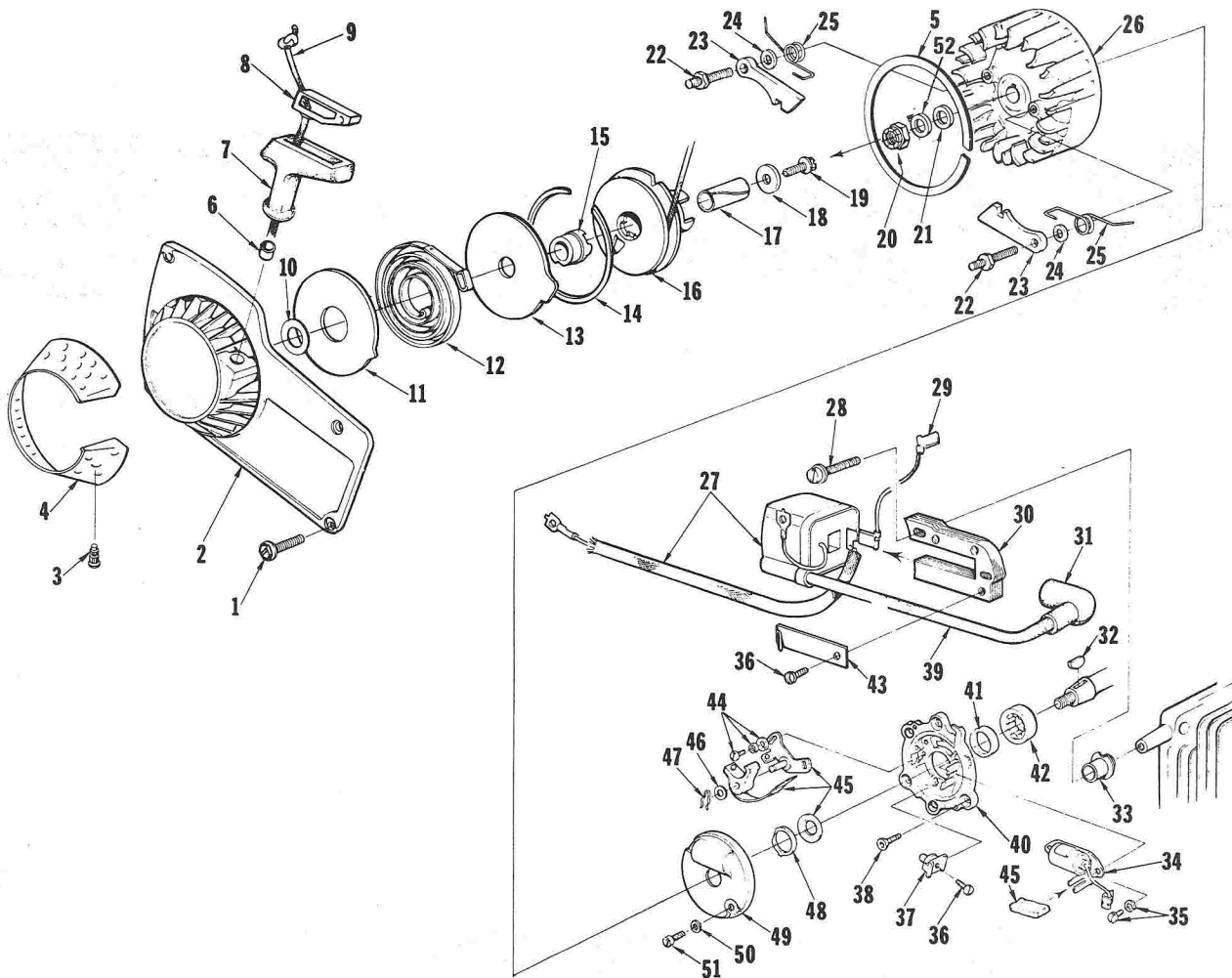


FIGURE 1

No.	Description	Part No.	Qty.	No.	Description	Part No.	Qty.
1	SCREW-hex, 10-32 x 1/2	80648	4	27	COIL-ignition	64091-AT	1
2	HOUSING-fan	A-67192-A	1	28	SCREW-coil core	82248	2
3	Includes: STUD-drive	67191	4	29	LEAD-ground to switch	A-63939	1
4	SCREEN-fan housing	65491	1	30	CORE-coil	54422	1
5	RING-air flow	67222	1	31	TERMINAL-spark plug	A-33055	1
6	BUSHING-starter rope	67177	1	32	KEY-Woodruff	75078	1
7	GRIP-starting rope	64155-A	1	33	RETAINER-lead	64301	1
8	INSERT-rope retaining	68837	1	34	CONDENSER & CLAMP	64086	1
9	ROPE-starter, 45" #4-1/2	63869	1	35	SCREW-condenser clamp	55411	2
10	WASHER	67185	1	36	SCREW	64090	2
11	SHIELD-spring (inner)	63713	1	37	BLOCK-terminal	64088	1
12	SPRING-rewind	63870	1	38	SCREW-back plate retainer	65321	5
13	SHIELD-spring (outer)	63714	1	39	LEAD-high tension	58966	1
14	RING-shield retaining	63875	1	40	PLATE-back	A-68142	1
15	LOCK-spring	64948	1	41	Includes: SEAL	58688-A	1
16	PULLEY & CUP ASSEMBLY	A-63952-T	1	42	BEARING-roller	67395	1
17	BUSHING-starter post	64374	1	43	CLIP-coil retaining	54423	1
18	WASHER-retaining	63606	1	44	SCREW-breaker clamp	55411	2
19	SCREW-hex, 10-32 x 1/2	80648	1	45	POINT-set w/felt	A-64087	1
20	NUT-jam, 5/16 - 24	122168	1	46	Includes: WASHER-post	28028	1
21	WASHER-flat, 5/16	84065-1	1	47	CLIP-post	28008	1
22	STUD-shoulder	63877	2	48	RETAINER-felt	64089	1
23	PAWL-starter	64442	2	49	COVER-breaker box	A-63928	1
24	WASHER-lock	83056	2	50	WASHER-flat # 6	84018	2
25	SPRING-starter pawl	65375-1	2	51	SCREW-cover	64085	2
26	ROTOR-magneto	63637	1	52	WASHER-lock 5/16	83030	1

VI 200 Chain Saw

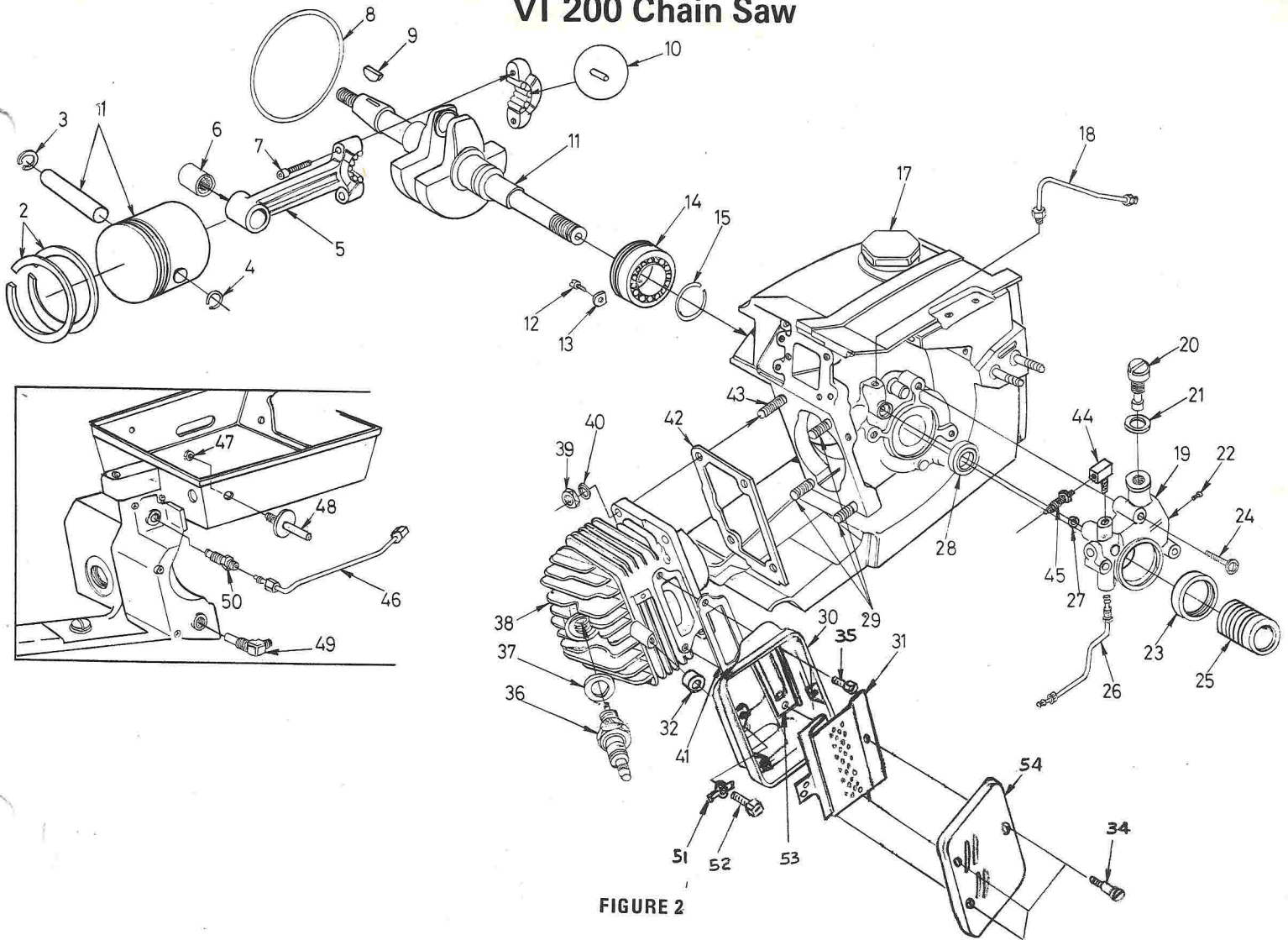


FIGURE 2

No.	Description	Part No.	Qty.	No.	Description	Part No.	Qty.
1	PISTON & PIN	A-121690	1	27	"O" RING	59074	1
	Includes:			28	SEAL	58308-B	1
2	PISTON RING	59436	2	29	STUD-cylinder (short)	55871	3
3	RING-retaining	75120	1	30	BODY-muffler	A-122300-1	1
4	RING-piston pin retaining	64813	1	31	BAFFLE-muffler	122303	1
5	ROD-connecting	A-68498-A	1	32	SPACER	68456-1A	1
	Includes:			34	SCREW-shoulder	64614-A	3
6	BEARING-needle	67408	1	35	SCREW-hex, 12-24 x 5/8	121430	2
7	SCREW	80541	2	36	SPARK PLUG (J-7)	122066	1
8	"O" RING	58785	1	37	Includes: GASKET	25038	1
9	KEY-Woodruff	75078	1	38	CYLINDER	A-122325-A	1
10	ROLLER-needle (set of 25)	A-69050	1	39	NUT-hex, 1/4-28	81065-2	4
11	CRANKSHAFT	68730	1	40	WASHER-lock, 1/4	83009	4
12	SCREW-Bearing retainer	59704	2	41	GASKET	121474	1
13	WASHER-special	63905	2	42	GASKET-cylinder	65829	1
14	BEARING-ball	63865	1	43	STUD-cylinder (long)	63868	1
15	RING-retaining	58319-A	1	44	CONNECTOR-elbow	31734	1
17	CAP-fuel filler	A-69500	1	45	FITTING-straight	65696	1
18	LINE-oil (Auto. upper)	A-63919	1	46	LINE-oil (manual)	A-122198	1
19	PUMP-automatic oil	A-67023-T	1	47	NUT-hex, 1/4-20 FLEXLOCK	81108	2
	Includes:			48	SUPPORT	122191	2
20	SCREW-cam	64102-A	1	49	FILTER-oil	A-64741-T	1
21	GASKET	59736	1	50	VALVE-check	A-65948-T	1
22	SCREW-pan, 4-40 x 1/4	80919	2	51	WASHER-Tab	122159	1
23	SEAL-felt	64393	1	52	SCREW-Hex (#12-24 x 1")	122307	1
24	SCREW-pan 8-32 x 7/8	80568	3	53	PLATE-Muffler	122302	1
25	WORM-oil pump	63228	1	54	CAP-Muffler	122305-1	1
26	LINE-oil (auto. lower)	A-121734	1				

