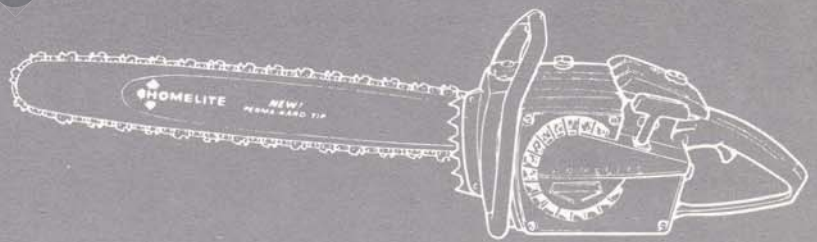


Price .25

CHAIN SAW PARTS LIST

**SUPER
XL-902
XL-910**

HOMELITE[®]



Leon's Chain Saw Parts & Repair
Do Not Sell or Reproduce

SXL-902 & SXL-910

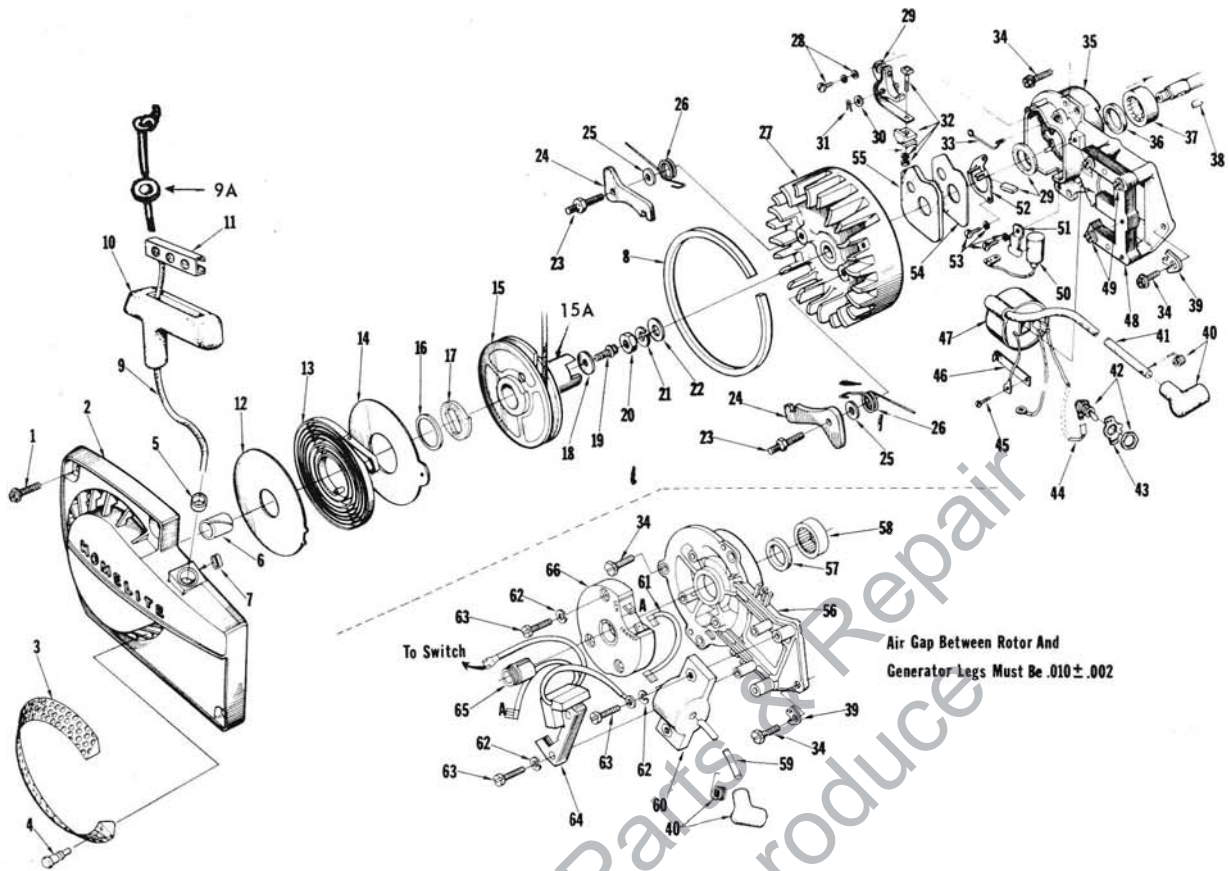


FIGURE 1

No.	Description	Part No.	SXL-902 SXL-910	Qty.	No.	Description	Part No.	SXL-902 SXL-910	Qty.		
1	SCREW-hex, 12-24 x 5/8	80676	x	x	4	34	SCREW-hex, 1/4-20 x 5/8	80048	x	x	4
2	HOUSING-fan	A-64504-B	x	x	1	*35	PLATE-magneto back	A-68027-T	x	x	1
3	Includes: SCREEN-fan housing	64420-1	x	x	1	36	Includes: SEAL	58688-A	x	x	1
4	STUD	67191	x	x	4	37	BEARING-roller	63195	x	x	1
5	BUSHING-starting rope	59313	x	x	1	38	KEY-woodruff	75078	x	x	1
6	BUSHING-starter post	64443	x	x	1	*39	WASHER-tab lock	67875-1	x	x	1
7	BUSHING-rewind spring	65830	x	x	1	40	TERMINAL-spark plug	A-33055	x	x	1
8	RING-air flow	67409	x	x	1	41	LEAD-high tension	63632	x	x	1
9	ROPE-starting	58806-T	x	x	1	42	SWITCH-toggle w/nut	A-57650-3	x	x	1
9A	WASHER, flat	120773	x	x	1	43	PLATE-indicating "On-Off"	72085-A	x	x	1
10	GRIP-starting rope	58915	x	x	1	44	LEAD-ground	A-59031	x	x	1
11	INSERT-rope retaining	58847-T	x	x	1	45	SCREW-ground	64090	x	x	1
12	SHIELD-spring (inner)	63566	x	x	1	46	CLIP-coil retaining	63726	x	x	1
13	SPRING-rewind	63268-A	x	x	1	47	COIL-ignition	63625	x	x	1
14	SHIELD-spring (outer)	63565-A	x	x	1	48	CORE-coil	63630	x	x	1
15	PULLEY-rewind starter	64395-1A	x	x	1	49	SCREW-coil core	64021	x	x	4
15A	CUP	64399			1	50	CONDENSER	63626	x	x	1
16	BUSHING-spring lock	64400	x	x	1	51	CLAMP-condenser	63627	x	x	1
17	LOCK-rewind spring	64049-A	x	x	1	52	RETAINER-felt	63628	x	x	1
18	WASHER-retaining	58763	x	x	1	53	SCREW-contact plate	55411	x	x	3
19	SCREW-hex, 10-32 x 1/2	80648	x	x	1	54	GASKET-breaker box cover	63316	x	x	1
20	NUT-hex, 3/8-24	81124	x	x	1	55	COVER-breaker box	63317	x	x	1
21	WASHER-lock, 3/8	83102	x	x	1	*56	PLATE-back	A-67618T	x	x	1
22	WASHER-flat, 3/8	84010-1	x	x	1	57	Includes: SEAL	58688-A	x	x	1
23	STUD-shoulder	58757-B	x	x	2	58	BEARING-roller	63195	x	x	1
24	PAWL-starter	58756	x	x	2	59	LEAD-high tension	67166	x	x	1
25	WASHER	83056	x	x	2	60	COIL-transformer	67164	x	x	1
26	SPRING-starter pawl	58758	x	x	2	61	LEAD-transformer	67167	x	x	1
27	ROTOR-magneto	63406	x		1	62	WASHER-lock, #8	83022	x	x	7
	ROTOR-magneto	67165		x	1	63	SCREW-pan, 8-32 x 3/4	82178	x	x	7
28	SCREW-contact plate	76421	x		1	64	COIL-core and generator	67163	x	x	1
29	POINTS-breaker	A-63631	x		1	65	CAP-dust	64002	x	x	1
30	Includes: WASHER-point	28028	x		1	66	MODULE-ignition	67162	x	x	1
31	CLIP-post	28008	x		1						
32	BLOCK-terminal	A-58934	x		1						
33	SPRING-clip cover	76413	x		1						

* Denotes new parts

SXL-902 & SXL-910

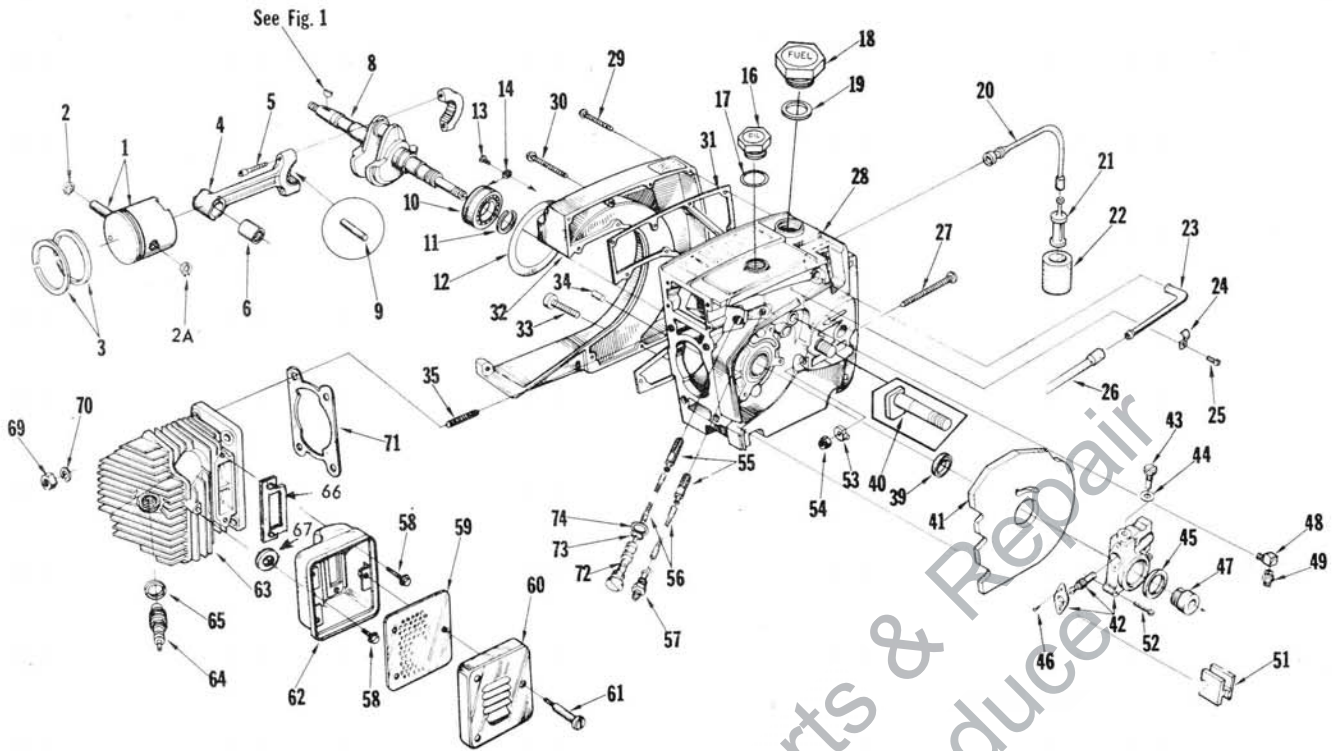


FIGURE 2

No.	Description	Part No.	Qty.	No.	Description	Part No.	Qty.
1	KIT, PISTON	A-122130	1	33	SCREW-fil, 8-32x1 1/4	82147	1
2	Includes: RING-piston pin retaining	64742	2	34	PIN-dowel	63621	2
3	PISTON RING	55038	2	35	STUD	55871	4
4	ROD-connecting	A-63309-1	1	39	SEAL	58688-A	1
5	Includes: SCREW-socket, 8-32 x 9/16	80805	2	40	BOLT-guide bar	67158	2
6	BEARING-needle	59351	1	41	SHIELD-sawdust	64156	1
8	CRANKSHAFT	59625-2	1	*42	PUMP-automatic oil	A-68265	1
9	BEARING-needle (28 rollers)	A-64621	1	43	Includes: SCREW-cam	64102-A	1
10	BEARING-ball	58190-S	1	44	GASKET-cam screw	59736	1
11	RING-retaining	58319-A	1	45	SEAL-felt	59926	1
*12	"O" RING	67559	1	46	SCREW-pan, 4-40 x 1/4	80919	2
13	SCREW-bearing retaining	59704	2	47	WORM-gear	59675	1
14	WASHER-lock	59705	2	48	CONNECTOR-elbow	31734	2
16	CAP-oil filler	A-65284-T	1	49	FITTING-tube	65696	1
17	Includes: "O" RING VALVE-check (not shown)	65138	1	51	GROMMET-oil line	65357	1
18	CAP-fuel filler	A-65283-AT	1	52	SCREW-pan, 8-32 x 3/4	80567	3
19	Includes: GASKET VALVE-check (not shown)	68961	1	53	PIN-guide bar adjusting	67586-1A	1
20	LINE-fuel (flexible)	63718	1	54	NUT-flexloc, 1/4-20	81108	1
21	FILTER-fuel	65593	1	55	FILTER-oil	A-64293	2
22	Includes: FILTER-fuel	A-59251	1	56	LINE-oil pick-up	64356	2
23	CONNECTOR-fuel line	59253	1	57	CONNECTOR-oil filter	65695	1
24	CLAMP-fuel line	67080	1	58	SCREW-hex, 12-24 x 5/8	121430	3
25	SCREW-pan, 6-32 x 5/16	65597-1	1	59	BAFFLE-muffler	65633	1
26	LINE-fuel	80605	1	60	CAP-muffler	63520-5	1
27	SCREW-guide bar adjusting	65718	1	61	SCREW-shoulder	63855-A	3
*28	CRANKCASE & TANK	A-68023-T	1	62	BODY-muffler	A-68982	1
29	Includes: SCREW-fil, 8-32 x 5/8	82146	6	63	CYLINDER-2" bore	A-122000	1
30	SCREW-fil, 8-32 x 2-3/16	82155	8	64	SPARK PLUG	63547-S	1
31	GASKET-fuel tank	67159	1	65	Includes: GASKET	25038	1
32	COVER-fuel tank	67153-2	1	66	GASKET, muffler	120910	1
				67	WASHER, muffler	84008	1
				69	NUT-hex, 1/4-28	81065-2	4
				70	WASHER-lock, 1/4	83009	4
				71	GASKET-cylinder	63778-1	1
				72	TUBE-oil line	63452-A	1
				73	"O" RING	58406	1
				74	GASKET-oil line tube	63751	1

* Denotes new parts

SXL-902 & SXL-910

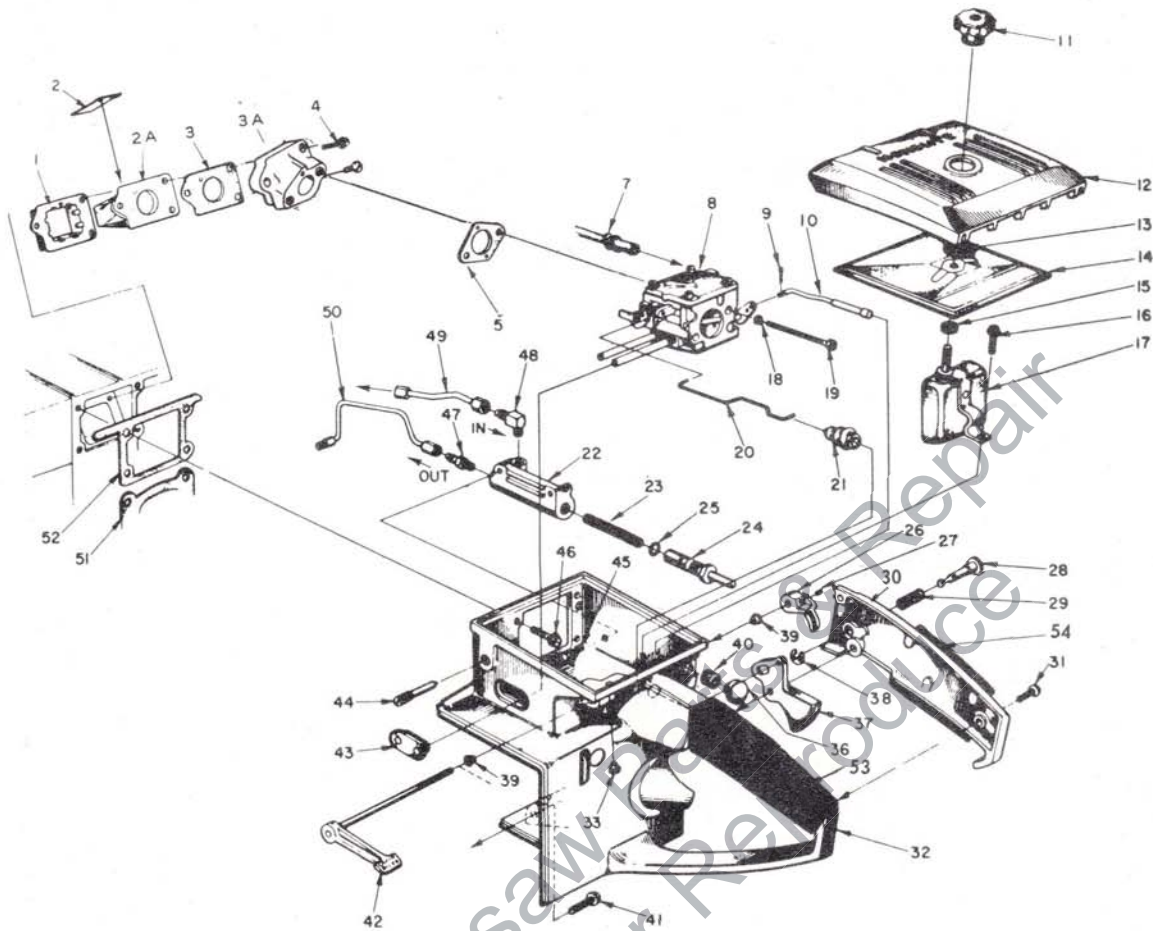


FIGURE 3

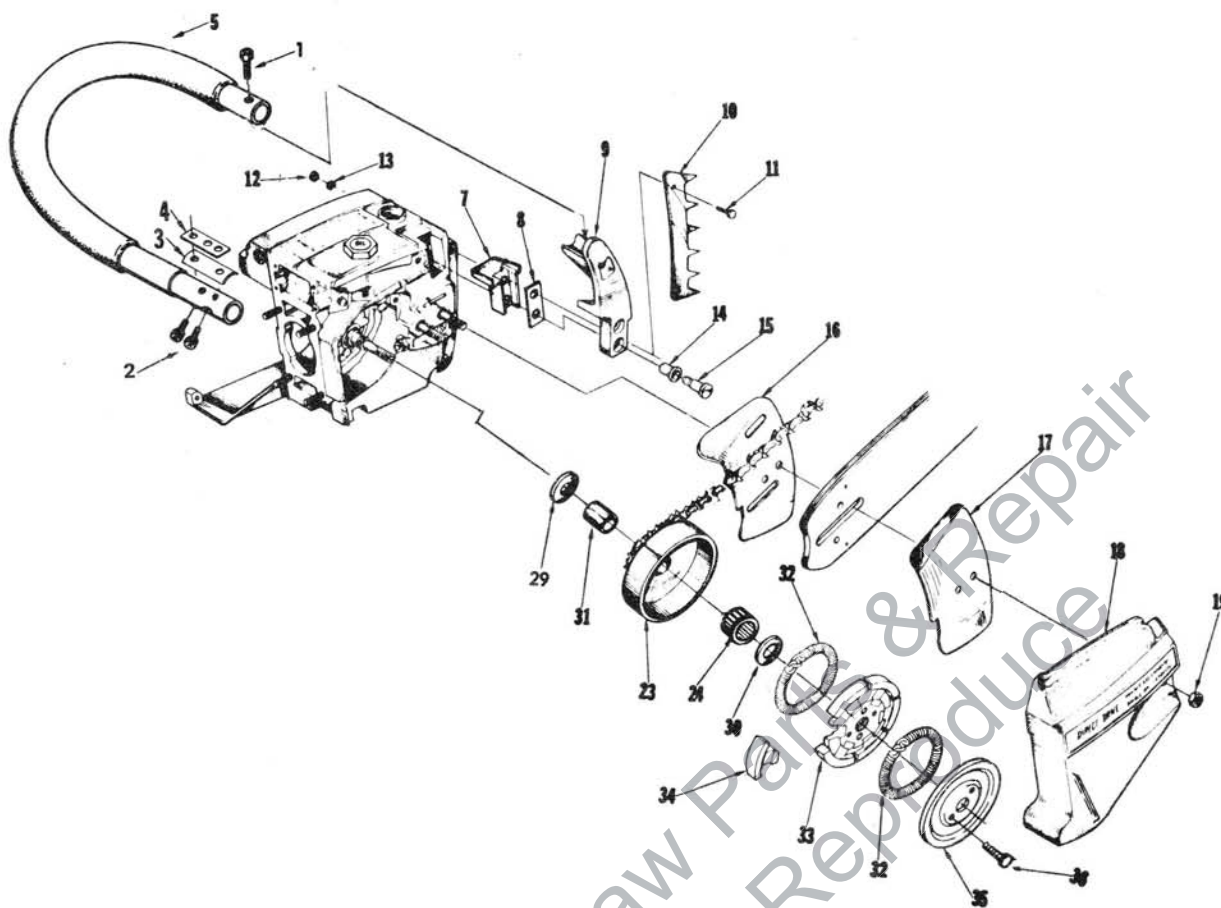
No.	Description	Part No.	Qty.
1	RETAINER - reed valve	63370-A	1
2	VALVE - reed	63166-A	4
2A	SEAT - reed valve	63371-B	1
3	GASKET - seat	65483	1
3A	SPACER - reed valve seat	A-67460-1T	1
4	SCREW -	82196	3
5	GASKET - carburetor	67540	1
7	LINE - fuel	65718	1
8	CARBURETOR	A-65578	1
9	PIN - cotter	86324	1
10	ROD - choke	120858	1
*11	NUT - cover mounting	A-67639	1
12	COVER - air filter	68634-1	1
13	RING - retainer	58319-A	1
14	FILTER ELEMENT - air	63341	1
15	GASKET - mounting nut	58392-1	1
16	SCREW - hex, 12-24 x 1/2	80821	1
17	DEFLECTOR - air, w/bracket	A-67101	1
18	WASHER - lock, #10	83046	2
19	SCREW - hex, 10-32 x 2	80965	2
20	ROD - throttle	63266-A	1
21	BOOT - throttle rod	58348	1
22	BODY - oil pump	63343-3T	1
23	SPRING - plunger	59293	1
24	PLUNGER - oil pump	A-57834-14	1
	Includes: "O" RING - shaft	59074	1
25	"O" RING - plunger	74388	1

No.	Description	Part No.	Qty.
26	LEVER - oiler	63280-2A	1
27	SCREW - Fil. Ho, 8-32 x 1/4	80018	1
28	PIN - throttle lock	58924-4	1
29	SPRING - lock	58405	1
*30	COVER - throttle handle	A-121853	1
	Includes: BUSHING - pin	59064	1
31	SCREW - pan, 8-32 x 1/2	80560	2
*32	HANDLE - throttle	A-68025T	1
33	Includes: BUMPER - rubber	56298	1
36	BUTTON	57289-1	1
37	THROTTLE - trigger	58859	1
38	RING - retaining	58409	1
39	BUSHING - throttle handle	63400	2
40	GROMMET	58362	1
41	SCREW - hex, 12-24 x 7/8	80891	1
42	LEVER - oiler w/shaft	A-63327-T	1
43	GROMMET	64664	1
44	SCREW - idle adjustment	63369-A	1
45	SCREW - sl. hex, 8-32 x 1/2	80983	2
46	SCREW - hex, 12-24 x 5/8	80676	4
47	VALVE - check (outlet)	A-65948-T	1
48	VALVE - check (inlet)	A-65502	1
49	LINE - oil (intake)	120856	1
50	LINE - oil	120862	1
51	GASKET - cylinder	63778-1	1
52	GASKET - throttle handle	63779-C	1
*53	GRIP, Throttle handle	68767	1
*54	GRIP, Throt. Hand. cover	68768	1

*Denotes new parts

ALWAYS FURNISH MODEL AND SERIAL NUMBER WHEN ORDERING PARTS.

SXL-902 & SXL-910



No.	Description	Part No.	Qty.	No.	Description	Part No.	Qty.
1	SCREW, fil hd 1/4-20 x 1	80060	3	*16	PLATE-guide bar (inner)	67160	1
2	SCREW, fil hd 1/4 - 20 x 1-1/8	122064	2	*17	PLATE-guide bar (outer)	67161	1
3	SPACER, handle bar	68898-1	1	*18	COVER-drivecase	67156-4T	1
4	PLATE, handle bar	65599	1	19	NUT-hex, 3/8-16	81089-2	2
*5	HANDLE BAR - Flush cut	A-121854-1	1	23	SPROCKET & DRUM-3/8 pitch, 8 tooth	A-65885-T	1
*	Wrap around	A-121925-1	1	24	Includes: BEARING-roller	64124	1
*7	MOUNT - Shock	65509	1	*29	WASHER, thrust	121895	1
8	PLATE, Handle bar bracker	65598	1	30	WASHER-thrust	63462	1
*9	BRACKET, Handle bar flush Handle bar Wrap	68766-2 68766-4	1 1	31	RACE-inner	64129	1
(NOTE: Use 2 screws, no. 80867 with bracket, no. 121513-2)				*32	SPRING-clutch	67441	2
10	KIT - spiked bumper	A-63720	1	*33	SPIDER-clutch	35723-2	1
11	includes: SCREW-hex, 12-24 x 3/4	80867	2	*34	SHOE-clutch	37896-1	6
12	NUT- 12-24	81068	2	*35	COVER-clutch	58751-1	1
13	WASHER-lock, # 12	83056	2	36	SCREW-hex, 10-32 x 1/2	80361-1	2
*14	GROMMET	65519	2				
15	SCREW-shoulder (see note item 9)	65521	2				

*Denotes new parts

SPECIAL TOOLS (available on order)

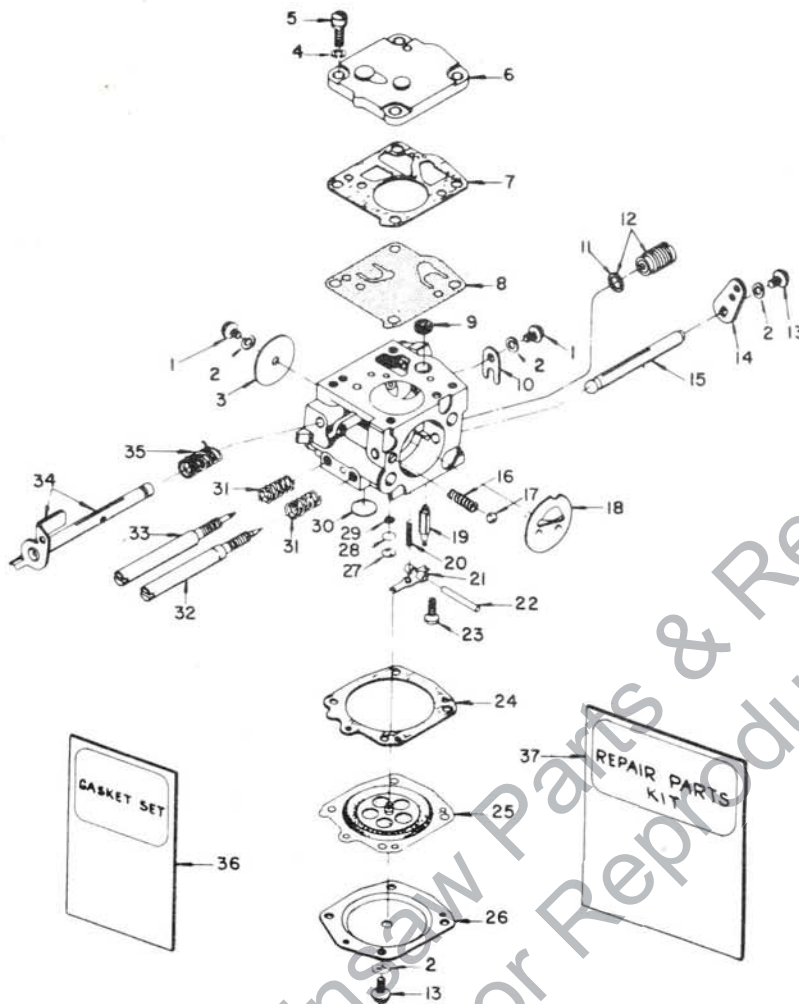
Part No.

Part No.

A-23937-B COMBINATION WRENCH (Note: use A-23937
for wrap around)
22828 PLIERS - piston snap ring
23528 WRENCH - socket screw (conn. rod)
23955 PLUG - bearing installation (conn. rod)
A-23965 JACKSCREW
23136-1 BODY - jackscrew
24302 PLUG - seal installation (back plate 910)
22820-4 COLLAR - bearing installation
23846-1 ANVIL - crankshaft installation
23971 SLEEVE - seal protecting (crankcase)
23972 SLEEVE - seal installation (crankcase)
23957 PLUG - seal installation (crankcase)

23987 SHIM - point gap
24306 SHIM - air gap (910)
C-50957 WRENCH - spanner (clutch)
A-23960 PULLER - rotor
23420 PLUG - bearing installation (sprocket)
23956 PLUG - bearing and seal installation (back plate)
23846-2 ANVIL - bearing disassembling (back plate)
24006-1 PLATE - crankshaft aligning
120875 BIT - posidrive No. 2
PAINT
22772 SPRAY CAN - black
23475 SPRAY CAN - red
23560 SPRAY CAN - white

SXL-902 & SXL-910



Assembly Number
A-65578

TILLOTSON MODEL HS-56A

No.	Part No.	Description	Qty.	No.	Part No.	Description	Qty.
1	80264	† SCREW - rd. hd., 4-40 x 3/16	2	19	59717	† NEEDLE - inlet	1
2	83008-1	† WASHER - lock, #4	4	20	55759	† SPRING - control lever	1
3	25050	SHUTTER - throttle	1	21	59716	† LEVER - inlet control	1
4	83024	WASHER - lock, #6	1	22	58977	† PIN - control lever fulcrum	1
5	80275	SCREW - fil. hd., 6-32 x 3/8	4	23	65798	† SCREW - oval hd., 4-40 x 1/4	1
6	58975	COVER - fuel pump diaphragm	1	24	58978	GASKET - main diaphragm	1
7	58981	GASKET - pump diaphragm	1	25	58988	† DIAPHRAGM - main control	1
8	58980-R	† DIAPHRAGM - fuel pump	1	26	58979	COVER - main diaphragm	1
9	58974	† SCREEN - fuel inlet	1	27	58994	† PLUG - extension (small)	1
10	58982	CLIP - throttle shaft retaining	1	28	57819	RING - retaining	1
11	74060	GASKET	1	29	59500	SCREEN - channel	1
12	A-65801	VALVE - governor	1	30	58991	† PLUG - extension (large)	1
13	80591	SCREW - rd. hd., 4-40 x 1/4	5	31	73075	† SPRING - adjustment needle	2
14	65800	LEVER - choke	1	32	63676	† SCREW - main adjustment	1
15	65799	SHAFT - choke	1	33	63677	† SCREW - idle adjustment	1
16	73264	SPRING - choke friction	1	34	A-63345	SHAFT - throttle w/lever	1
17	25527	BALL - check	2	35	59460	† SPRING - throttle opening	1
18	58984	SHUTTER - choke	1	36	65895	† GASKET SET	1
				37	65896	REPAIR KIT	1

† Indicates contents of Repair Kit.

* Denotes new parts.

ALWAYS FURNISH MODEL AND SERIAL NUMBER WHEN ORDERING PARTS.

PART NO. 121856

TERRY INDUSTRIES
A DIVISION OF **textron** CANADA LIMITED

180 Labrosse Ave., Pointe Claire, Que.

