

PRICE .25¢

PARTS LIST

HOMELITE

SUPER

XL - 130

CHAIN SAW



TERRY INDUSTRIES

A DIVISION OF **Textron** CANADA, LIMITED

180 Labrosse, Ave., Pointe Claire, Que.



PART NO. 122440
9/74

Super XL-130

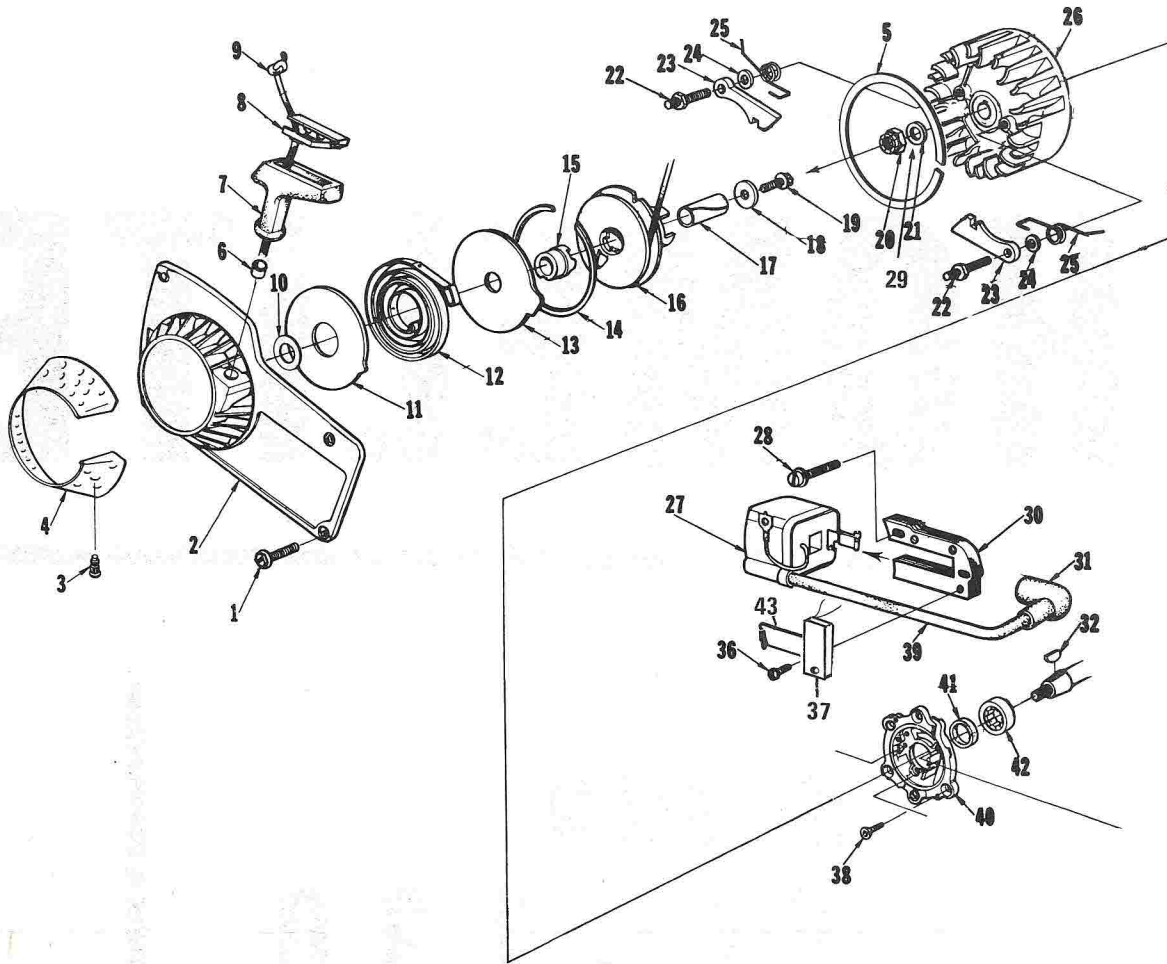


FIGURE 1

No.	Description	Part No.	Qty.	No.	Description	Part No.	Qty.
1	SCREW-hex, 10-32 x 1/2	80648	4	21	WASHER-flat, 5/16	84065-1	1
2	HOUSING-fan	A-67192-A	1	*22	STUD-shoulder	63877-B	2
3	Includes: STUD-drive	67191	4	23	PAWL-starter	64442	2
4	SCREEN-fan housing	65491	1	24	WASHER-lock	83056	2
5	RING-air flow	67222	1	25	SPRING-starter pawl	65375-1	2
6	BUSHING-starter rope	67177	1	26	ROTOR-magneto	63637	1
7	GRIP-starting rope	64155-A	1	*27	COIL-ignition	A-122454	1
* 8	INSERT-rope retaining	68837-T	1	28	SCREW-coil core	82248	2
9	ROPE-starter	63869	1	29	WASHER Lock	83030	1
10	WASHER	67185	1	30	CORE-coil	54422	1
11	SHIELD-spring (inner)	63713	1	31	TERMINAL-spark plug	A-33055	1
12	SPRING-rewind	63870	1	32	KEY-woodruff	75078	1
13	SHIELD-spring (outer)	63714	1	*36	SCREW #6-32 x 3/4 Taptite	122409	1
14	RING-shield retaining	63875	1	*37	IGNITION Module	A-122350	1
15	LOCK-spring	64948	1	38	SCREW-back plate retainer	65321	5
16	PULLEY & CUP ASSEMBLY	A-63952-T	1	39	LEAD-high tension	58966	1
17	BUSHING-starter post	64374	1	40	PLATE-back	A-68142	1
18	WASHER-retaining	63606	1	*41	Includes: SEAL	12282-A	1
19	SCREW-hex, 10-32 x 1/2	80648	1	42	BEARING-roller	67395	1
20	NUT-jam, 5/16-24	122168	1	43	CLIP-coil retaining	54423	1

*Denotes New Parts

Super XL-130

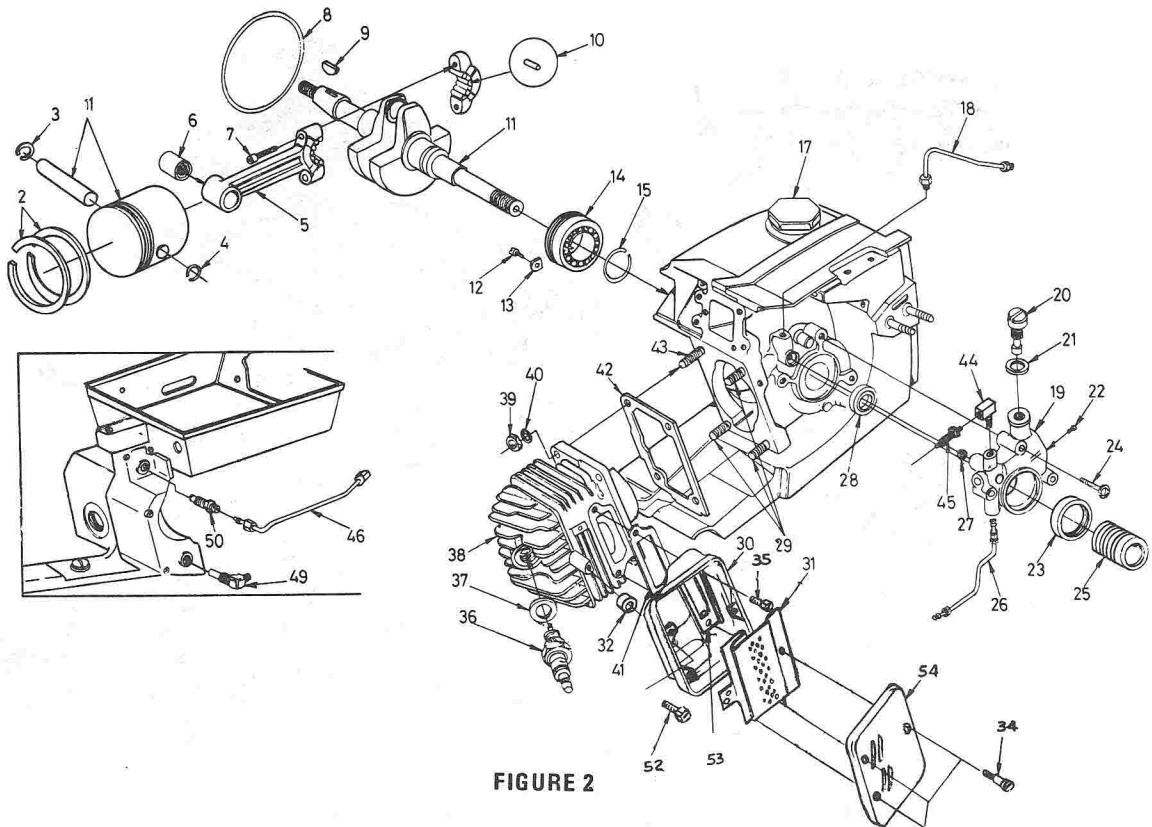


FIGURE 2

No.	Description	Part No.	Qty.	No.	Description	Part No.	Qty.
1	PISTON & PIN Includes:	A-121690	1	27	"O" RING	59074	1
2	PISTON RING	59436	2	28	SEAL	58308-B	1
3	RING-retaining	75120	1	29	STUD-cylinder (short)	55871	3
4	RING-piston pin retaining	64813	1	30	BODY-muffler	A-122300-1	1
5	ROD-connecting Includes:	A-68498-A	1	31	BAFFLE-muffler	122303	1
6	BEARING-needle	67408	1	32	SPACER	68456-1A	1
7	SCREW	80541	2	34	SCREW-shoulder	64614-A	3
8	"O" RING	58785	1	* 35	SCREW-hex, 12-24 x 5/8	122403	2
9	KEY-Woodruff	75078	1	36	SPARK PLUG (J-7)	122066	1
10	ROLLER-needle (set of 25)	A-69050	1	37	Includes: GASKET	25038	1
11	CRANKSHAFT	68730	1	38	CYLINDER	A-122325-A	1
12	SCREW-Bearing retainer	59704	2	39	NUT-hex, 1/4-28	81065-2	4
13	WASHER-special	63905	2	40	WASHER-lock, 1/4	83009	4
14	BEARING-ball	63865	1	41	GASKET	121474	1
15	RING-retaining	58319-A	1	42	GASKET-cylinder	65829	1
17	CAP-fuel filler	A-69500		43	STUD-cylinder (long)	63868	1
18	LINE-oil (Auto. upper)	A-63919	1	44	CONNECTOR-elbow	31734	1
19	PUMP-automatic oil Includes:	A-67023-T	1	45	FITTING-straight	65696	1
20	SCREW-cam	64102-A		46	LINE-oil (manual)	A-122198	1
21	GASKET	59736	1	49	FILTER-oil	A-64741-T	1
22	SCREW-pan, 4-40 x 1/4	80919	2	50	VALVE-check	A-65948-T	1
23	SEAL-felt	64393	1	*52	SCREW-Hex (#12-24 x 1")	122404	1
24	SCREW-pan 8-32 x 7/8	80568	3	*53	PLATE-Muffler	64127-T	1
25	WORM-oil pump	63228	1	54	CAP-Muffler	122305-1	1
26	LINE-oil (auto. lower)	A-121734	1				

*Denotes New Parts

SPECIAL TOOLS (available on order)		Part No.	Description	Part No.	Description
A-122140	WRENCH-combination	A-122055	ANVIL-roller bearing disassembly	A-24057	BEARING REMOVER- (back plate)
22820-5	COLLAR-bearing installation (bearing to shaft)	A-23949	PULLER	24076	SLEEVE-seal protection (crankcase side)
22828	PLIERS-retaining ring	A-23960	TOOL-piston pin removal	24230	DRIVER-hand, pozidriv
23136-1	SLEEVE-bearing and shaft installation	23972	BRACKET-rotor removal	24173	DRIVER-check valve installation
23528	WRENCH-socket screw (connecting rod)	24006-2	SLEEVE-seal installation	A-23934	SPANNER Weenich, clutch
23756	PLUG-needle bearing (connecting rod)	A-24051	PLATE-shaft alignment	120875	BIT-pozidriv No. 2
23759	SLEEVE-seal protection (back plate)	24054	JACKSCREW (bearing to shaft to crankcase)	23987	SHIM, Plastic-Magneto Gap
		24055	PLUG-seal assembly (crankcase)		
			PLUG-bearing and seal assembly (back plate)		
				PAINT	
				23475	SPRAY CAN-red paint

ALWAYS FURNISH MODEL AND SERIAL NUMBER WHEN ORDERING PARTS.

