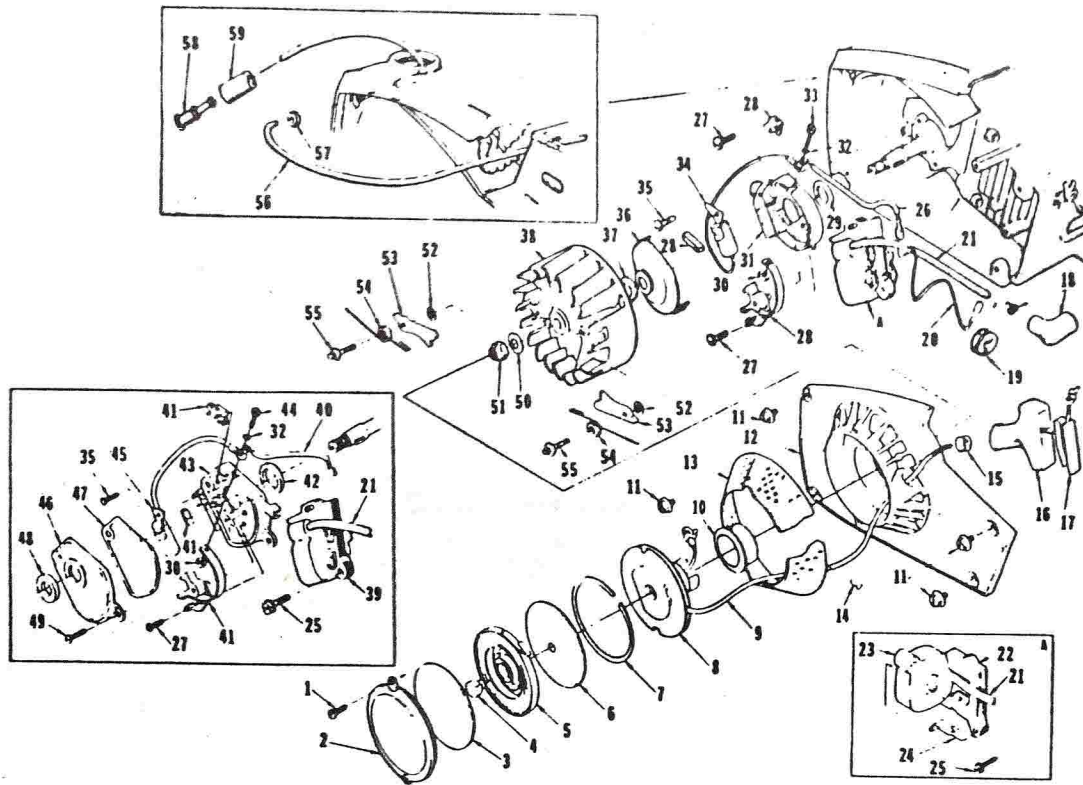


# SUPER-MINI-S

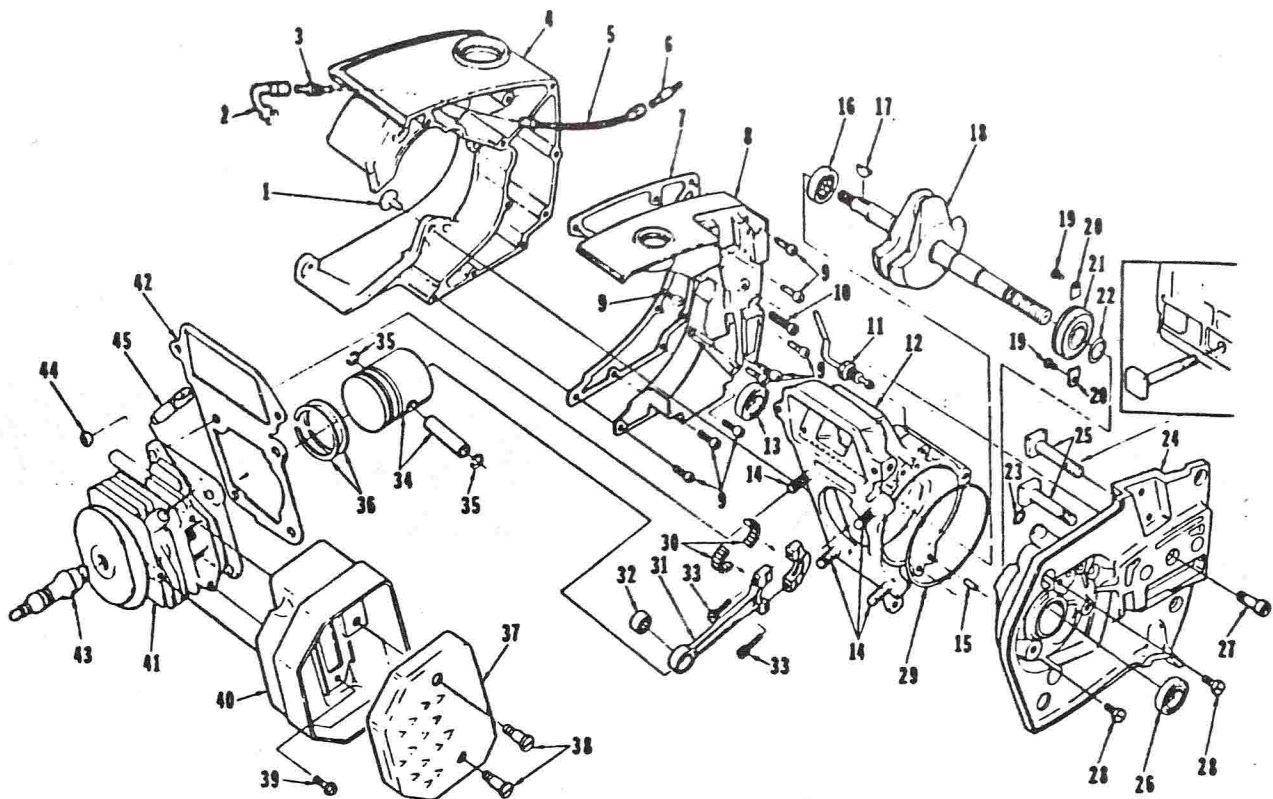


No.	Description	Part No.	Qty.	No.	Description	Part No.	Qty.
1	SCREW- Pan, 8-32 x3/8	80577	2	36	*COVER- Breaker box	A-65210-A	1
2	COVER- Starter	65095-2	1		Includes:		
3	SHIELD- SPRING (Inner)	65113	1	37	*SEAL- Felt	65211	1
4	LOCK- Spring	65102	1	38	*ROTOR- Magneto	65288	1
5	SPRING- Rewind	65107	1		†ROTOR- Magneto	68701	1
6	SHIELD- Spring (outer)	65114	1	39	†COIL & CORE	68716	1
7	RING- Retaining	65125	1	40	†LEAD GROUP- Primary	68712	1
8	PULLEY & CUP	A-65170	1	41	†POINTS- Breaker	A-68710	1
9	ROPE- Starter, 42" #4	68528	1		Includes:		
10	BUSHING- Starter cup	68244	1	42	†SEAL- Felt	68705	1
11	SCREW- Hex, 10-32 x 5/8	80704	4		†WASHER- Thrust (not shown)	28028	A/R
12	HOUSING- Rewind starter	A-65222-1	1		†LOCK- Breaker arm (not shown)	28008	1
	Includes:			43	†BOX- Breaker	68708	1
13	SCREEN- Air, inlet	65189	1	44	†SCREW- Hex, 6-32 x 1/2	68700	1
14	STUD- Drive #2	85133	3	45	†CONDENSER	68711	1
15	BUSHING- Starter rope	65185	1	46	†COVER- Breaker box	A-68704	1
16	GRIP- Starter rope	65183	1		Includes:		
17	INSERT- Rope retaining	68837	1	47	†GASKET- Breaker box cover	68774	1
18	TERMINAL- Spark plug	A-33055	1	48	†SEAL- Felt	68773	1
19	GROMMET- Hi-tension lead	75036	1	49	†SCREW- Cover mounting	68715	2
20	LEAD- Ground	A-63939	1	50	WASHER- Flat, 5/16	84065-1	1
21	LEAD- Hi-tension	65205	1	51	NUT- Hex, 5/16-24	81112	1
22	CORE- Coil	68255	1	52	WASHER- Starter pawl	83046	2
23	*COIL- Ignition	68256	1	53	PAWL- Starter	65108	2
24	*RETAINER- Coil	68257	1	54	SPRING- Starter pawl	65120	2
25	SCREW- Coil core	64021	2	55	STUD- Starter pawl	65109	2
26	*LEAD GROUP- Primary	65291	1	56	LINE- Fuel	A-68053-A	1
27	SCREW- Pan, 6-32 x 3/8	80571	2	57	Includes:		
28	*POINTS- Breaker	A-65203-A	1	57	GROMMET	68046	1
29	Includes:			58	FILTER- Fuel	A-69923	1
29	*SEAL- Felt	65209	1		Includes:		
30	NUT- Hex	65207	1	59	FILTER- Felt	64083	1
31	*BOX- Breaker	65206-A	1				
32	WASHER- Lock, #6	83004-1	1				
33	*SCREW- Hex, 6-32 x 7/16	67628	1				
34	*CONDENSER	65286	1				
35	SCREW- Pan, 6-32 x 1/2	80630	1				

\*Phelon  
†Wico

Phelon and Wico parts are not individually interchangeable.  
Complete magneto must be either Wico or Phelon.

# SUPER-MINI-S



No.	Description	Part No.	Qty.	No.	Description	Part No.	Qty.
1	SCREW- Retaining	65321-A	3	24	DRIVECASE	A-94060	1
2	LINE- Oil (flexible)	65137	1		Includes:		
3	FITTING- Oil line	65138-A	1	25	BOLT- Guide bar	65025	2
4	TANK- Fuel & oil	A-94328	1	26	SEAL	65019-J	1
5	LINE- Oil (pick up)	93112-14	1	27	SCREW- Fil, drivecase retainer	65157-A	1
6	FILTER- Oil	A-65172	1	28	SCREW- Hex, 12-24 x 5/8	80676	3
7	GASKET- Fuel & oil tank	65046	1	29	"O"RING	65127	1
8	COVER- Fuel & oil tank	A-69832	1	30	BEARING- Needle (set of 28)	A-65009	1
9	SCREW- Fil, 8-32 x 5/8	82146	9	31	ROD- Connecting	A-68051	1
10	SCREW- Fil, 8-32 x 1-7/16	82187	1		Includes:		
11	LINE- Oil	A-69334	1	32	BEARING- Needle	68512	1
12	CRANKCASE	A-69260	1	33	SCREW- Soc, 8-32 x 9/16	80805	2
	Includes:			34	PISTON & PIN	A-68487	1
13	SEAL	65019	1		Includes:		
14	STUD- Cylinder	55871	4	35	RING- Piston pin retaining	64813	2
15	PIN- Dowel	65153	1	36	PISTON RING	68508	2
16	BEARING- Roller	65179	1	37	CAP- Muffler	68253-1	1
17	KEY- Woodruff	65126	1	38	SCREW- Shoulder	64133-A	2
18	CRANKSHAFT	65006-2	1	39	SCREW- Hex, 10-32 x 3/8	80870	3
19	SCREW- Bearing retaining	59704	2	40	BODY- Muffler	A-65152-2	1
20	WASHER- Lock special	63905	2	41	CYLINDER- 1-9/16 dia.	A-69737-A	1
21	BEARING- Ball	65044-S	1	42	GASKET- Cylinder	65018	1
22	RING- Retaining	65045	1	43	SPARK PLUG	65130-S	1
23	"O"RING	59074	1	44	NUT- Hex, 1/4-28	81065-2	4
				45	VALVE- Compression release	A-65184	1



