

HOMELITE[®]

PARTS LIST

MP-88

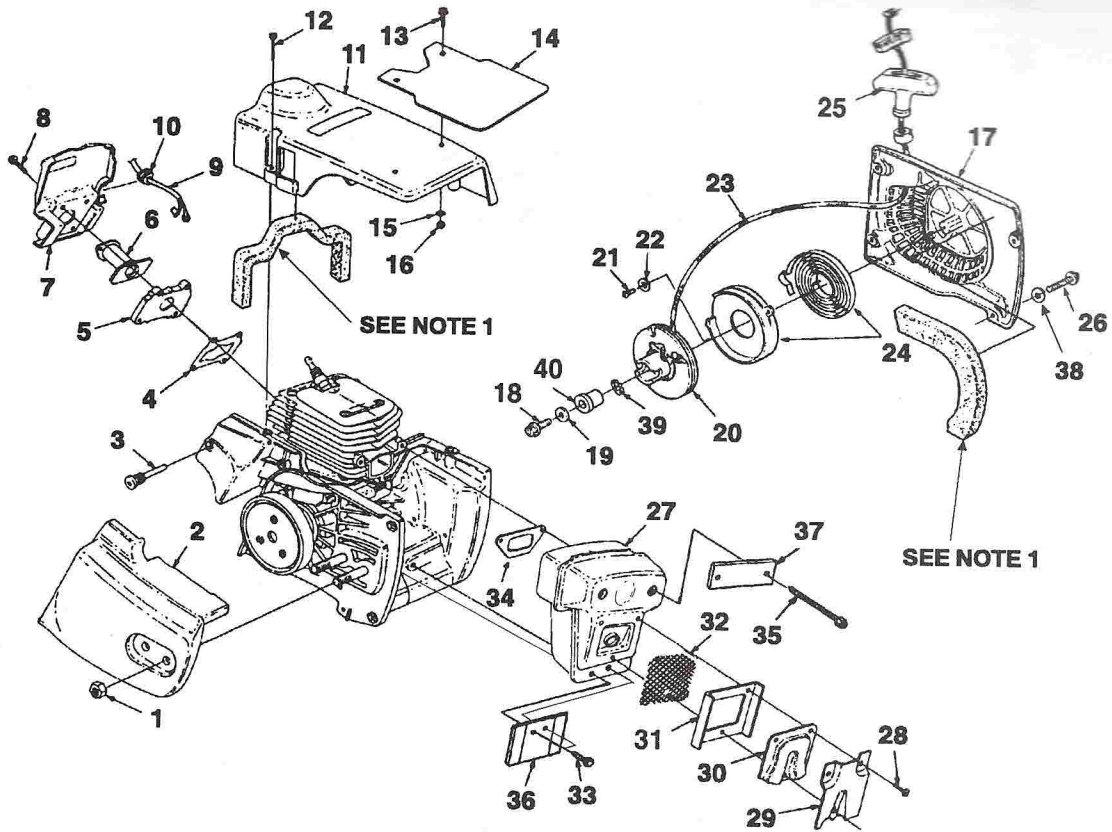
MULTI-PURPOSE SAW

UT 05051



PART NO. 18704
Printed in U.S.A.

MP-88
FIGURE 1



No.	Part No.	Description	Quantity
1	81089-2	NUT-(3/8-16 X 5/16")	2
2	47869-5	COVER-Drivecase	1
3	93367	PIN-Isolator	6
4	97264	GASKET-Intake Adaptor	1
5	02822	ADAPTOR-Intake	1
6	97263-B	BOOT	1
7	97338-1A	BAFFLE-Cylinder	1
8	82246	SCREW-Mach. Hex (10-24 X 1")	4
9	• A-98583-C	LEAD-Ground	1
10	58318	GROMMET	1
11	A-02121	COVER-Cylinder	1
12	93397-A	SCREW-Cylinder Cover	3
13	82475	SCREW-Pan Hd. (#10)	2
14	49533	SHIELD-Heat	1
15	84003	WASHER-Flat (#10)	1
16	81256	NUT-Locking (10-24)	2
17	• A-02128	HOUSING-Starter	1
18	82409	SCREW-Thd. Form. (#10 X 5/8")	1
19	58763	WASHER-Retaining	1
20	A-97990-C	CUP & PULLEY	1
21	82215	SCREW-Plastite (6 X 3/8")	2
22	84025	WASHER-Flat (#8)	2
23	A-00518	ROPE-Starter	1
24	A-98067	RETAINER & SPRING	1
25	A-69962-B	GRIP-Starter	1

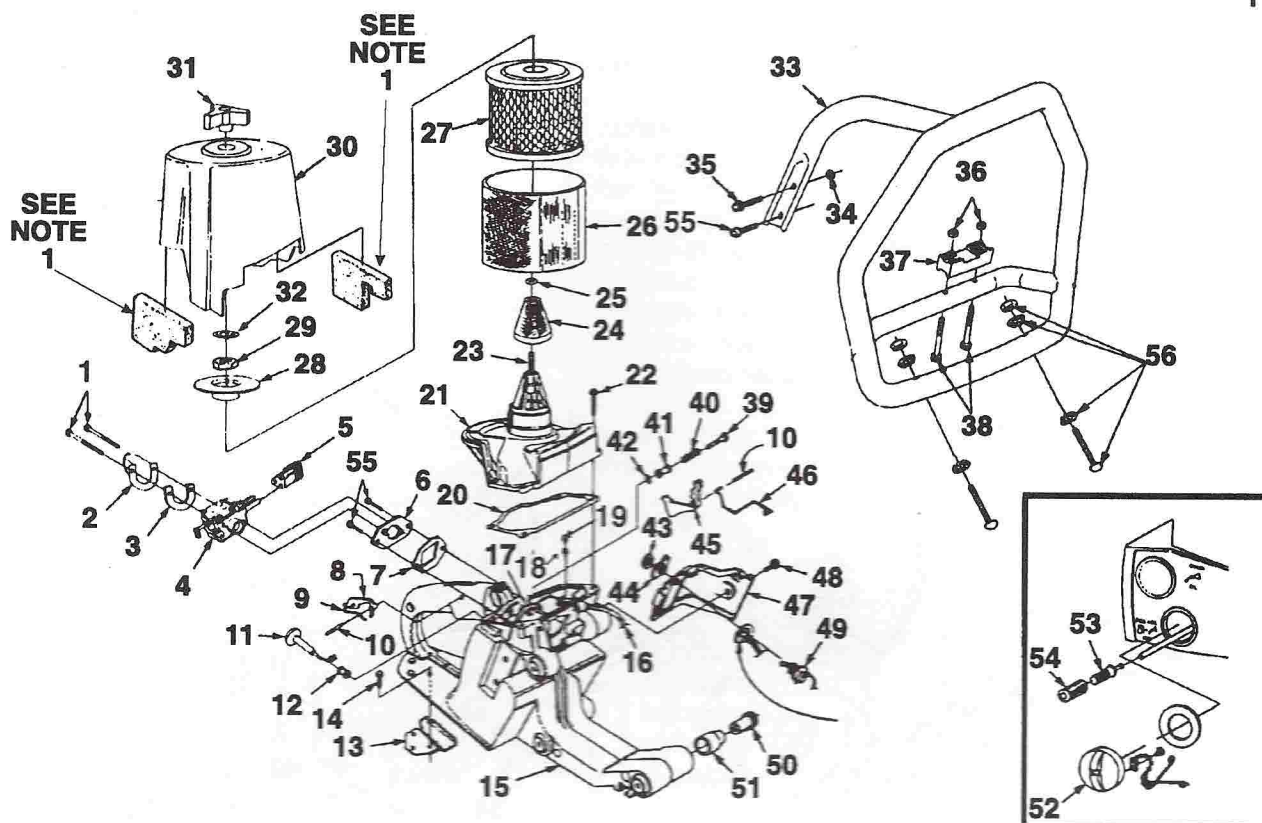
No.	Part No.	Description	Quantity
26	82562	SCREW-Pan Hd. (10-24 X 7/8")	4
27	• A-04430	MUFFLER ASSY.	1
28	80983	SCREW-Mach. Hex (8-32 X 1/2")	3
29	A-49545	SHIELD-Muffler	1
30	49525	CAP-Muffler	1
31	49548	SUPPORT-Spark Arrestor	1
32	98827	SCREEN-Spark Arrestor 1	1
33	82555-1	SCREW-Truss Hd. (10-24 X 3/4")	2
34	97682-B	GASKET-Muffler	1
35	82592	SCREW-Cap Hex Hd. (1/4-20 X 3 1/4")	2
36	04423	SHIELD-Muffler Cover	1
37	84003	WASHER-Flat (#10)	4
38	02505	SPRING-Grip	1
39	04431	PLATE-Retaining	1
40	97992-A	BUSHING-Starter	1

NOTE 1: A-03661 FOAM KIT

• ASSEMBLIES

MP-88

FIGURE 2



No.	Part No.	Description	Qty.
1	82527	SCREW-Socket Hd.	2
2	49673	SHIELD-Carburetor	1
3	49671	GASKET-Carburetor Shield	1
4	A-49510-A	CARBURETOR-(Walbor WJ-24A)	1
5	97295	GROMMET	1
6	97290-2A	ADAPTOR-Carburetor	1
7	97291	GASKET-Carburetor	1
8	93385-A	LOCK-Trigger	1
9	97265	SPRING-Flat	1
10	68548	PIN-Trigger	1
11	97292-1	ROD-Choke	1
12	64862	GROMMET	1
13	A-49640	PLATE-Wear	1
14	88041	SCREW-Sems Hex Hd. (8-32 X 3/8")	3
15	A-49770	HOUSING-Engine	1
16	93157-23	TUBING-Rubber (5 3/4") (Pulse Line)	1
17	93112-37	TUBING-Rubber (9") (Fuel Line)	1
18	96841	VALVE-Check	1
19	93410	FILTER	1
20	97298	GASKET-Carb. Chamber	1
21	49509-A	COVER-Carb. Chamber	1
22	80582	SCREW-Pan Hd. (8-32 X 5/8")	4
23	49511-A	BOLT	1
24	49555	FILTER-Air	1
25	94150	"O" RING	2
26	49513	PREFILTER, FELT	1
27	49512	ELEMENT-Air Filter	1
28	49898-1	COVER-Air Filter Element	1
29	81162	NUT-Hex (5/16-18)	1

No.	Part No.	Description	Qty.
30	A-49514-A	COVER-Filter	1
31	46076	KNOB	1
32	46072	RING-Retaining	1
33	A-49595-1	HANDLE BAR	1
34	81208	NUT-Hex Lock (10-24)	2
35	82555-1	SCREW-Truss Hd. (10-24 X 3/4")	1
36	96212	NUT-Locking (1/4-28")	2
37	49622-2	BRACKET-Handle Bar	1
38	82532	SCREW-Mach. Oval Hd. (1/4-20 X 1/2")	2
39	95671	PIN-Throttle Lock	1
40	95020	SPRING-Compression	1
41	95989	BUSHING	1
42	58409	RING-Retaining	1
43	72084-A1	NUT-Hex	1
44	12793-A	PLATE-Indicating	1
45	93842	TRIGGER-Throttle	1
46	97294-A	ROD-Throttle	1
47	97306	COVER-Switch	1
48	80560	SCREW-Pan Washer (8-32 X 1/2")	1
49	A-57650-A	SWITCH-Toggle	1
50	97305-1A	ISOLATOR-Vibration	6
51	97262	SLEEVE-Flanged	6
52	A-03131	CAP-Fuel	1
53	A-97700	FILTER-Fuel	1
54	59253-1A	ELEMENT - Filter	1
55	96620	SCREW-Truss Torx (T25)	2
56	A-03633	KIT-Wear Pad	1

NOTE 1: A-03611 FOAM KIT

● ASSEMBLIES

