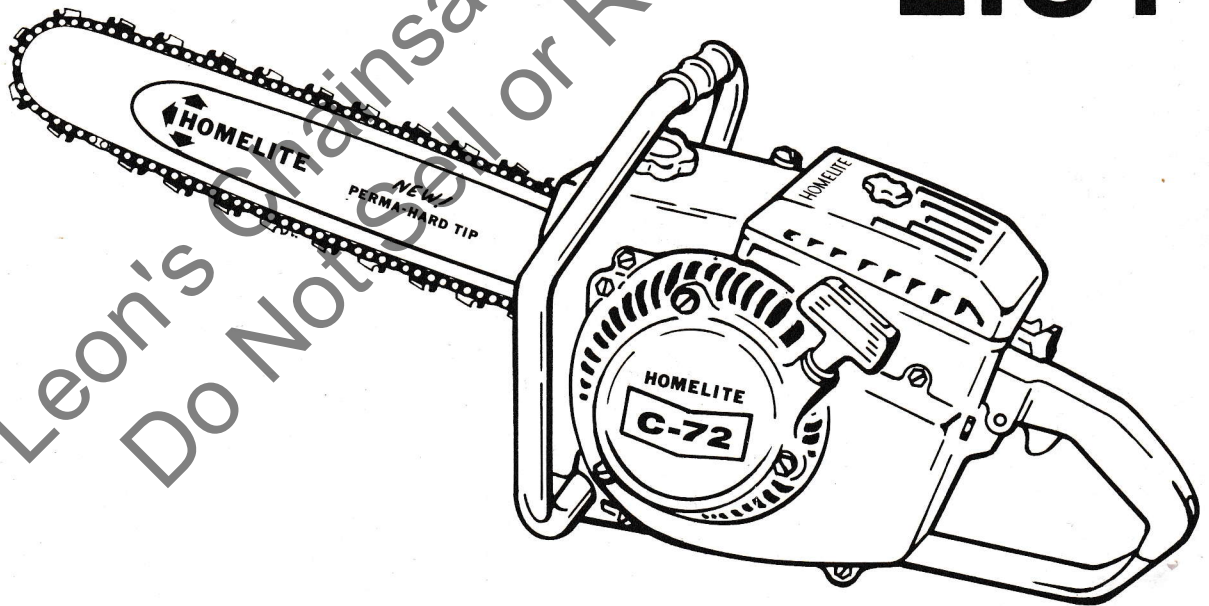


REV. 2
PART NO. 24602
Printed in U.S.A.
PRICE .35

HOMELITE®

C-72 CHAIN SAW

PARTS LIST

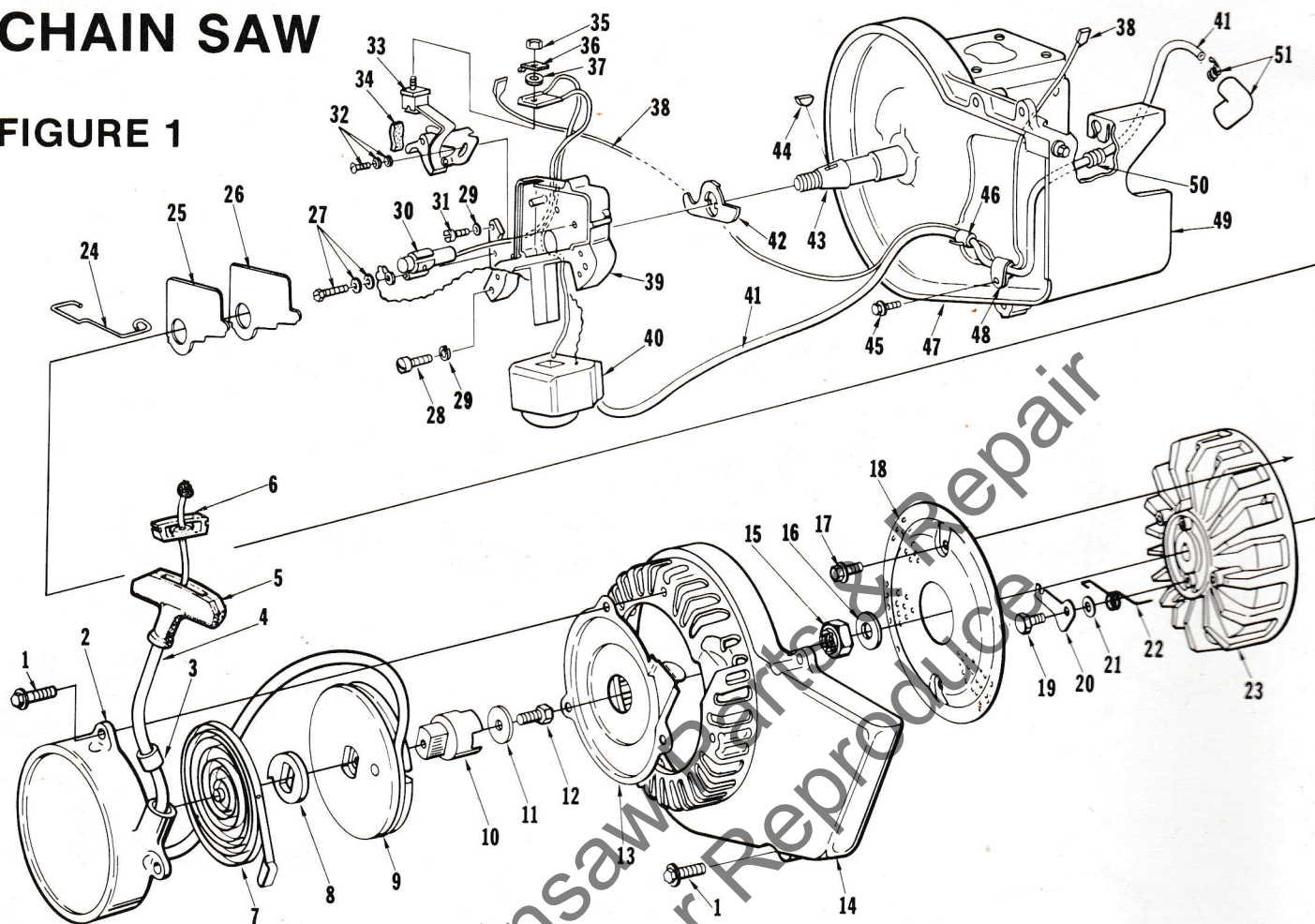


HOMELITE **TEXTRON**

Homelite Division of Textron Inc.

C-72 CHAIN SAW

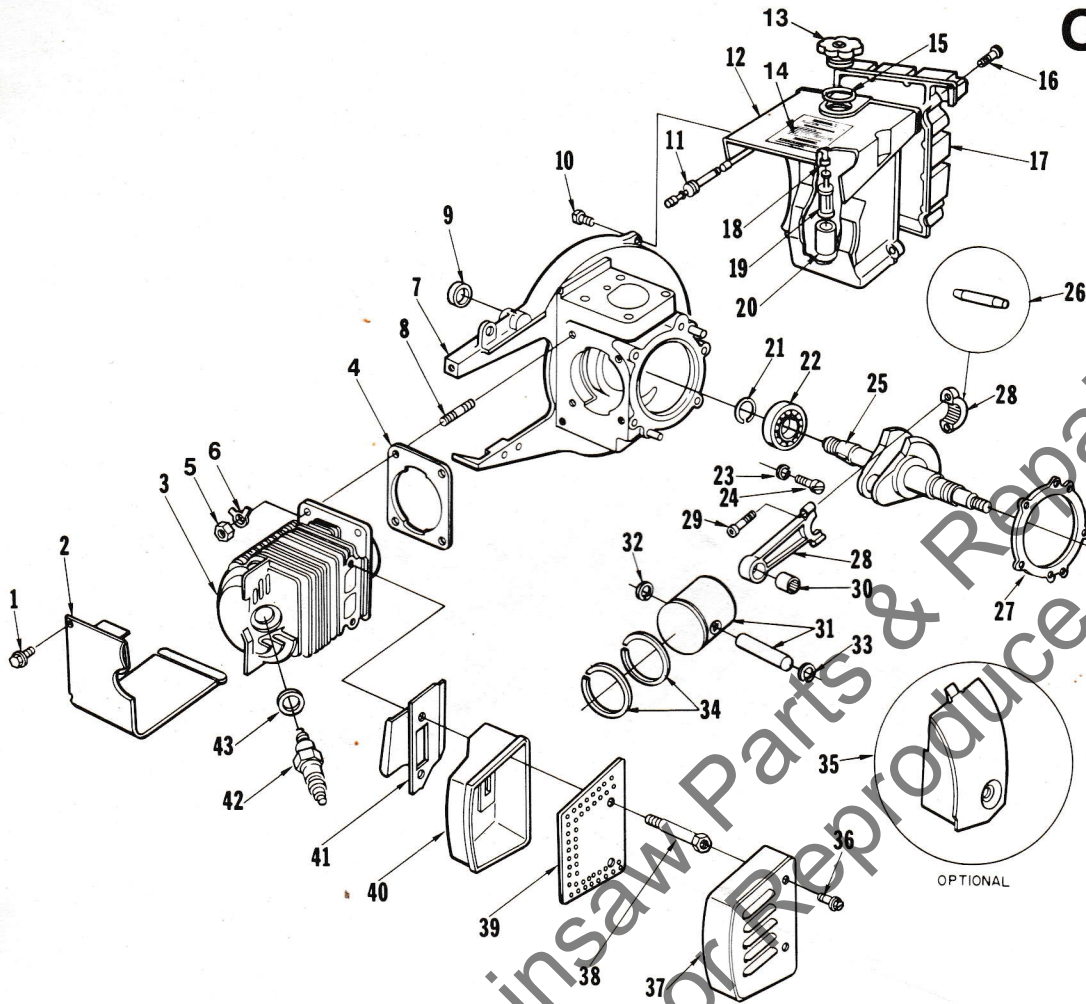
FIGURE 1



No.	Description	Part No.	Qty.	No.	Description	Part No.	Qty.
1	SCREW- Hex hd. 12-24 x 3/4	80867	7	24	CLIP- Cover	55980	1
2	STARTER- Rewind	A-64178-3A	1	25	COVER- Breaker box	55979	1
	Includes:			26	GASKET- Breaker box cover	55978-2	1
3	BUSHING- Starter cover	67177	1	27	SCREW- Condenser	57750	1
	BUSHING- Starter post (not shown)	64443-1	1	28	SCREW- Fil hd. 10-24 x 7/8	80660	2
	BUSHING- Starter cup (not shown)	65830	1	29	WASHER- Lock #10	83046	3
4	ROPE- Starter (#5 48" long)	A-93875	1	30	CONDENSER- W/terminal	55987	1
	Includes:			31	SCREW- Fil hd., 10-24 x 1/2	80595	1
	WASHER- (not shown)	93862	1	32	SCREW- Breaker points	57749	1
5	GRIP- Starting rope	A-69962-B	1	33	POINT- Breaker	A-58165	1
	Includes:				Includes:		
6	INSERT- Rope retaining	70018-A	1	34	WIPER- Cam	55984	1
7	SPRING- Rewind	64180-A	1	35	NUT- Terminal	55982	1
8	LOCK- Rewind spring	64049-B	1	36	TAB- Ground	57733	1
9	PULLEY- Starter	64050-1	1	37	WASHER- Terminal	55983	1
10	CUP- Starter	67139	1	38	LEAD- Ground w/terminal	A-58321	1
11	WASHER- Retaining	58763	1	39	BOX- Breaker w/core	57744	1
12	SCREW- Hex hd. spinlock, 10-32 x 1/2	80648	1	40	COIL- Ignition	55986-A	1
13	SHIELD- Sawdust	64052	1	41	LEAD- High tension	58382	1
14	HOUSING- Fan	59094-1	1	42	SEAL- Breaker box	56292-A	1
15	NUT- Lock, 7/16-20	81104	1	43	CRANKSHAFT	59270-2	1
16	WASHER- Flat 7/16	84047	1	44	KEY- Woodruff	75078	1
17	SCREW- Hex hd. spinlock 10-24 x 3/8	80869	2	45	SCREW- Hex hd. 10-24 x 3/8	80869	1
18	SCREEN- Rotary	64055	1	46	SLEEVE	55290	1
19	STUD- Starter pawl	64054-B	2	47	CRANKCASE (see Figure 2)	A-63072-B1	1
20	PAWL- Starter	58756	2	48	CLAMP- Lead	56014	1
21	WASHER	70901	2	49	SHIELD- Cylinder	A-59919-1	1
22	SPRING- Starter pawl	65375-2	2	50	GROMMET	68046	1
23	ROTOR	64053-A	1	51	TERMINAL- Spark plug	A-55373-A	1

C-72 CHAIN SAW

FIGURE 2

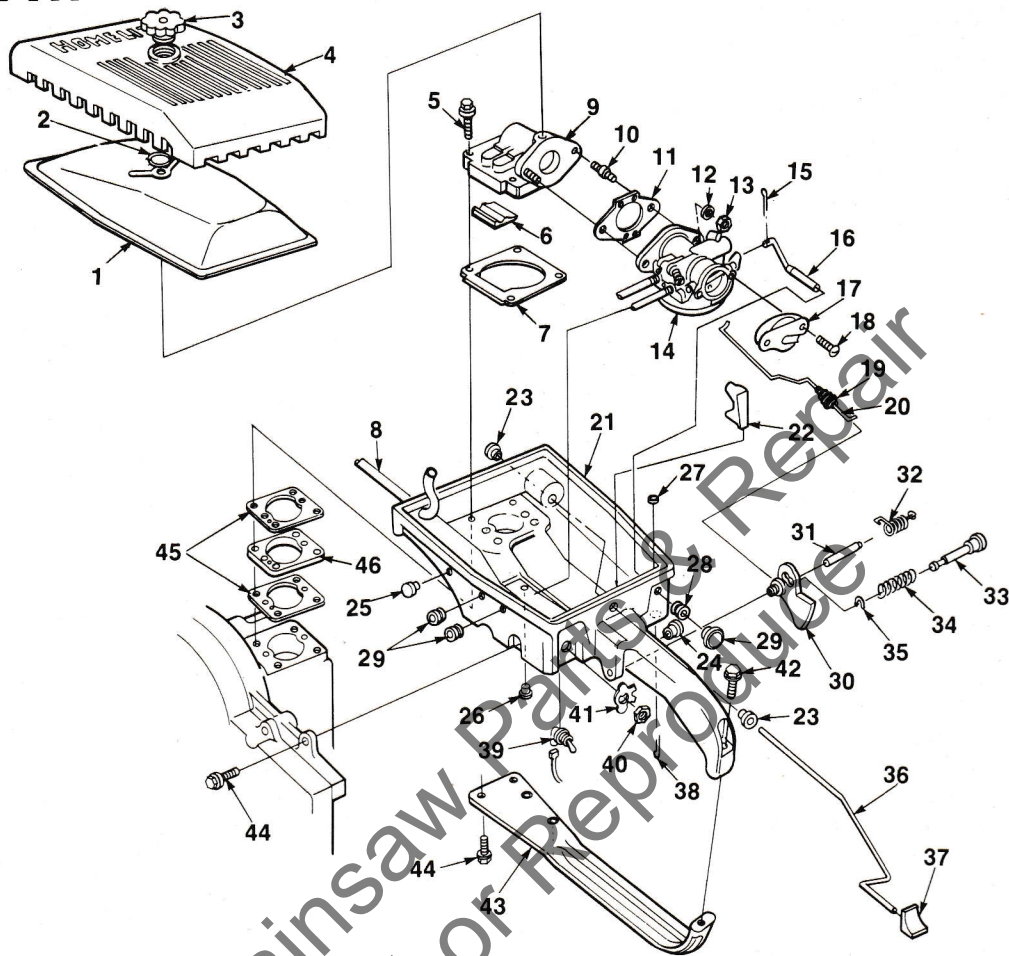


No.	Description	Part No.	Qty.	No.	Description	Part No.	Qty.
1	SCREW- Hex hd. 10-24 x 3/8	80869	2	23	WASHER- Lock	83061	2
2	SHIELD- Cylinder	A-59919-1	1	24	SCREW- Bearing retaining	19238-3	2
3	CYLINDER	A-69710	1	25	CRANKSHAFT	59270-2	1
	Includes:			26	ROLLER- Needle	A-69060	1
4	GASKET- Cylinder	58292	1	27	GASKET- Crankcase	63356	1
5	NUT- Hex 1/4-28	81065-2	4	28	ROD- Connecting	A-59483-1A	1
6	WASHER- Lock 1/4	83009	4		Includes:		
7	CRANKCASE	A-63072-B1	1	29	SCREW	69919	2
	Includes:			30	BEARING- Needle	69638	1
	PIN- (not shown)	74322	2	31	PISTON & PIN	A-58653-C	1
8	STUD	55871	4		Includes:		
9	SEAL	58308-B	1	32	RING- Retaining	64742	1
10	SCREW- Hex hd., 12-24 x 3/4	80867	4	33	RING- Retaining	55095	1
11	FITTING- Fuel outlet	58364	1	34	PISTON RING	55038	2
12	TANK- Fuel	58172-4	1	35	EXCHANGER- Heat (note 1)	59279	1
13	CAP- Fuel filler	A-65741-A	1		MUFFLER	A-59652	1
	Includes:				Includes:		
	VALVE- Vent (not shown)	69451	1	36	SCREW- Hex hd., 12-24 x 1/2	80821	2
14	LABEL- Warning	69847	1	37	CAP- Muffler	58425-1	1
15	GASKET- Fuel filler cap	65358	1	38	STUD- Muffler	59337	2
16	SCREW- Rd. hd. #6 x 1/2	80513	15	39	BAFFLE- Muffler	58423-A	1
17	COVER- Fuel tank	58173-1	1	40	BODY- Muffler	A-58419-1	1
	GASKET- Fuel tank cover (not shown)	58367	1	41	DEFLECTOR- Air (note 1)	58639	1
18	LINE- Fuel (flexible)	94772-25	1	42	SPARK PLUG	40190-S	1
19	FILTER- Fuel	A-59251	1		Includes:		
	Includes:			43	GASKET	25038	1
20	FILTER- Felt	59253-1	1				
21	RING- Retaining	58319-A	1				
22	BEARING- Ball	58190-S	1				

NOTE 1: When 59279 heat exchanger is installed, remove 58639 air deflector.

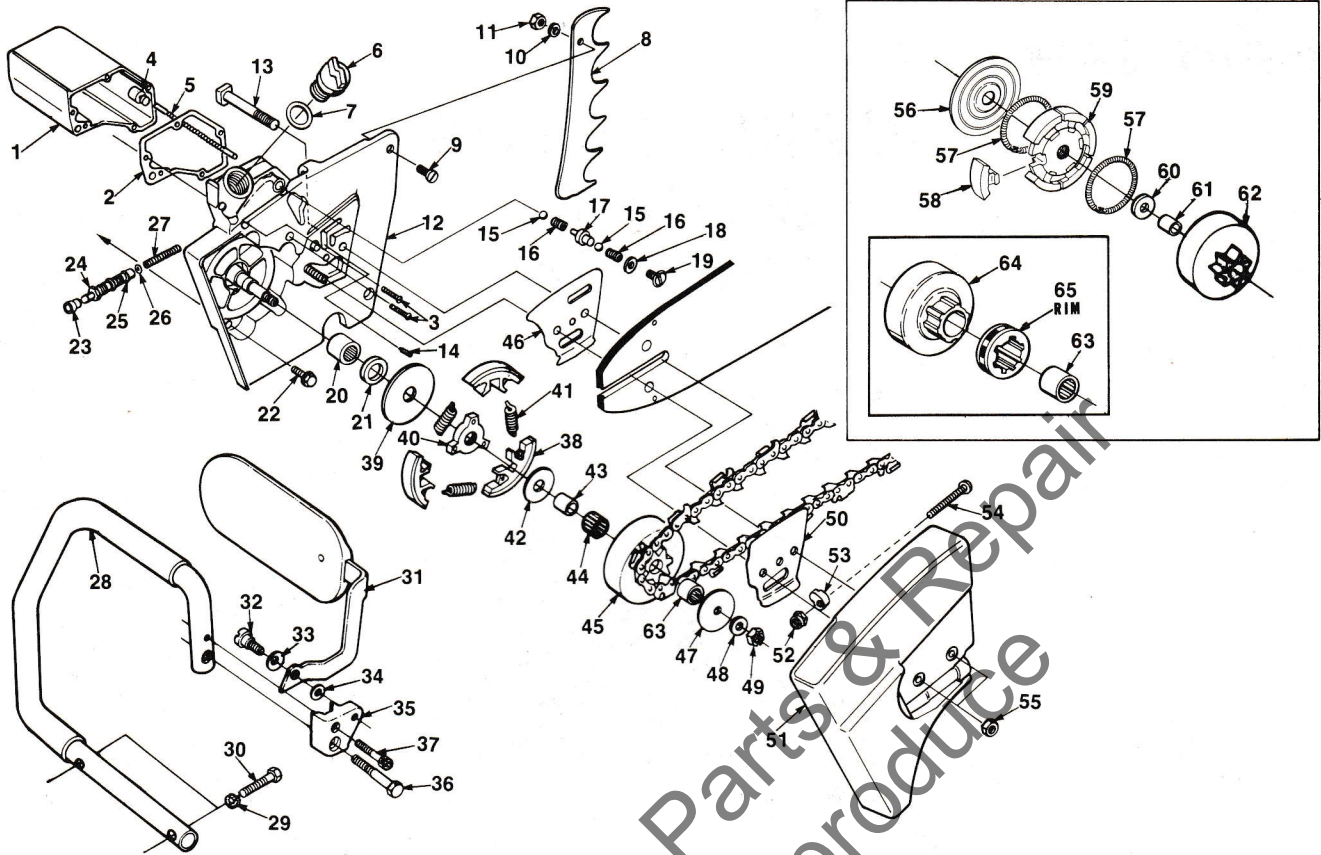
C-72 CHAIN SAW

FIGURE 3



No.	Description	Part No.	Qty.	No.	Description	Part No.	Qty.
1	AIR FILTER	A-69306	1	26	PLUG- Button	A-64744	3
2	RING- Retaining	58319-A	1		Includes:		
3	NUT- Cover	A-70326	1		"O" RING (not shown)	59765	1
4	COVER- Air filter	59230-1	1	27	WASHER- Felt	63290	1
5	SCREW- Hex hd., 12-24 x 1 1/2	80868	4	28	GROMMET	58362	3
6	BLOCK- Filler	58933	1	29	BUTTON- Choke rod	57289-1	1
7	GASKET- Elbow	58344	1	30	TRIGGER- Throttle	58181-A	1
8	LINE- Fuel	70308-21	1	31	SHAFT- Trigger	58353	1
9	ELBOW- Reed	A-59490	1	32	SPRING- Throttle	58352-A	1
	Includes:			33	PIN- Throttle latch	94378	1
10	STUD- Carburetor	27464	2	34	SPRING- Compression	95020	1
11	GASKET- Carburetor	63655-A	1	35	RING- Retaining	58409	1
12	WASHER- Lock, 1/4	83009	2	36	ROD- Oil pump	58356-B	1
13	NUT- Hex 1/4-20	81013	2	37	BUTTON- Oil rod	58357	1
14	CARBURETOR	A-59427-A	1	38	COTTER PIN- 1/16 x 1/2	86301	1
15	COTTER- Pin. 1/32	86324	1	39	SWITCH- Toggle	A-57650-3A	1
16	ROD- Choke	A-58354	1		Includes:		
17	DEFLECTOR- Carburetor air	58837-2	1	40	NUT	72084-A1	1
18	SCREW- Pan hd. 10-32 x 1/2	80625	2	41	PLATE- Indicating	70839	1
19	BOOT- Throttle rod	69889	1	42	SCREW- Hex hd. 12-24 x 1	80864	1
20	ROD- Throttle	59338-A	1	43	BRACE- Throttle handle	58185-A1	1
21	HANDLE- Throttle	A-63665	1	44	SCREW- Hex hd. 12-24 x 3/4	80867	3
	Includes:			45	GASKET- Spacer	58343	2
22	STOP- Rod	58930	1	46	SPACER- Carburetor	58391	1
23	BUSHING- Rod	58929	2				
24	BUSHING- Latch pin	59064	1				
25	PLUG- Button	A-69514	1				
	Includes:						
	"O" RING (not shown)	59765	1				

FIGURE 4



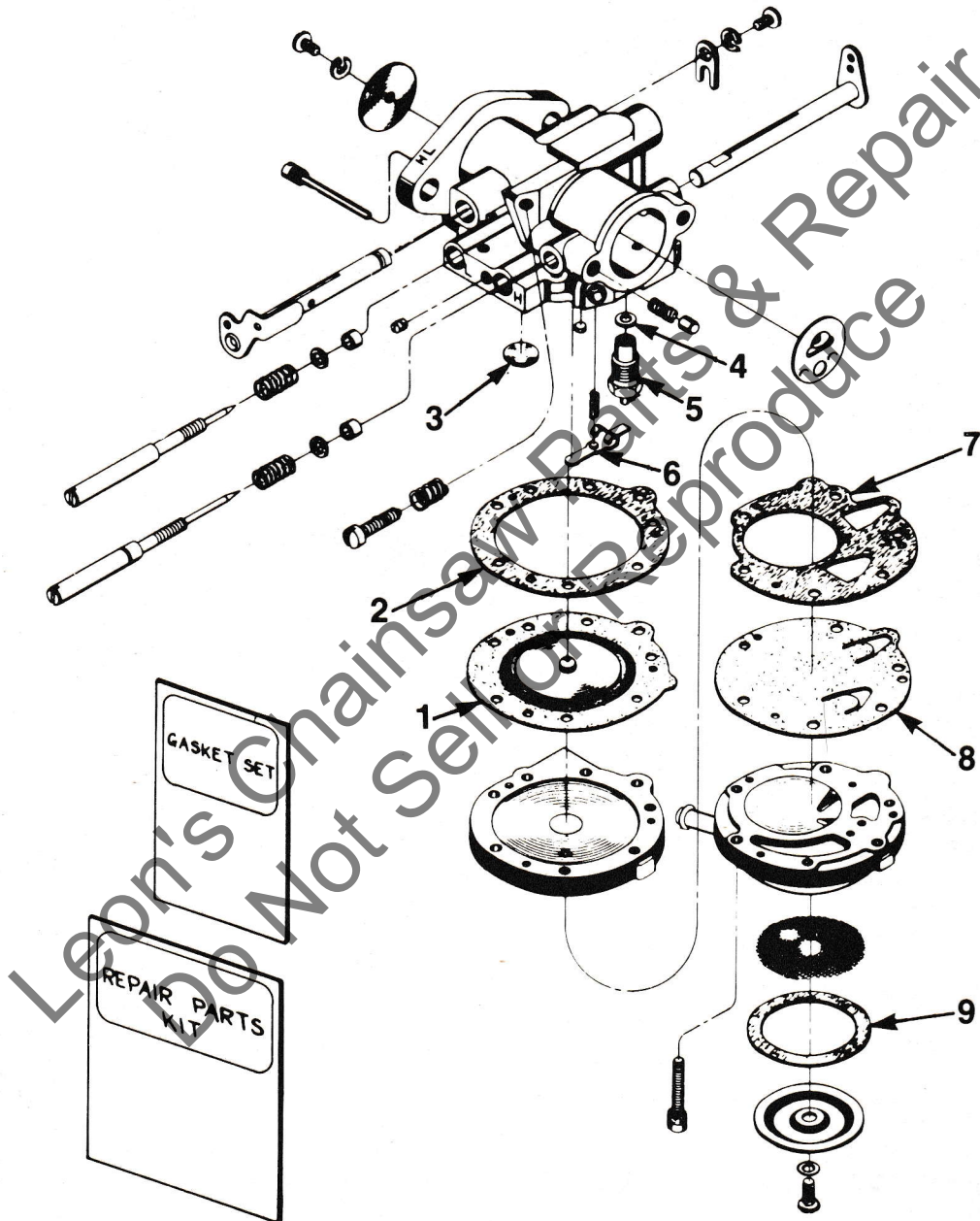
No.	Description	Part No.	Qty.	No.	Description	Part No.	Qty.
1	RESERVOIR- Oil	A-58341-A		35	BRACKET- Hand guard	95799-2	1
	Includes:			36	SCREW	80288	1
2	GASKET- Reservoir	67122	1	37	SCREW	82245	1
3	SCREW- Fil, 8-32 x 3/4	82156	5		KIT- Clutch (3 shoe lined)	A-95661-A	1
	COTTER- Pin (not shown)	86301	1		Includes:		
4	FILTER- Oil	A-68593	1	38	SHOE- Clutch	A-94126	3
5	LINE- Oil pickup	58340-B	1	39	WASHER	95703	1
6	CAP- Oil filler	A-63717-C	1	40	SPIDER- Clutch	95701	1
	Includes:			41	SPRING- clutch	93814-A	3
7	GASKET- Filler cap	56607	1	42	WASHER	63860	1
	VALVE (not shown)	69451	1	43	RACE- Inner	65985-B	1
8	KIT- spiked bumper	A-58543	1	44	BEARING	64124	1
	Includes:			45	SPROCKET & DRUM 3/8" 7 tooth	A-95631	1
9	SCREW- Flat hd., 1/4-20 x 3/4	80053	2	46	PLATE-Guide bar (inner)	56871-B	1
10	WASHER- Lock, 1/4	83009	2	47	WASHER- Thrust (outer) (note 2)	65064	1
11	NUT- hex hd. 1/4-20	81053	2	48	WASHER- Flat 3/8	84010	1
12	DRIVECASE	A-59493-C	1	49	NUT- Hex 3/8-24	81192	1
	Includes:			50	PLATE- Guide bar (outer)	56872-C	1
13	BOLT- Guide bar	58334-A	2	51	COVER- Drivecase	A-58378-1	1
	TUBE- Oil line (not shown)	59023	1		Includes:		
14	SCREW- Plug	59621	1	52	NUT- 5/16-18	81235	1
15	BALL- check	25527	2	53	PIN- Adjusting	55613-1	1
16	SPRING- Check valve	59022	2	54	SCREW- Pin 5/16-18 x 2 1/8	82219	1
17	SEAT- Valve	A-67959	1	55	NUT- Hex 3/8-16	81089-2	2
	Includes:				6 SHOE CLUTCH (optional) (56 — 61)		
18	GASKET	67123	1	56	COVER- Clutch	56101-A	1
19	CAP- Check valve	67958	1	57	SPRING- Clutch	55123-C	2
20	BEARING- Needle	63043	1	58	SHOE- Clutch	69754-C	6
	Includes:			59	SPIDER- Clutch	58546-1A*	1
21	SEAL	56256-B	1	60	WASHER- Thrust (inner)	58833-1	1
22	SCREW- Hex hd, 12-24 x 3/4	80867	5	61	RACE- Inner	55661	1
23	CONNECTOR- Oil pump	58337-A	1	62	SPROCKET & DRUM Open type		
24	PLUNGER- Oil pump	A-57834-10	1		3/8" pitch, 7 tooth	A-67545	1
	Includes:				(Note 1) 3/8" Pitch, 8 tooth	A-58923*	1
25	"O" RING- Shaft	59074	1		.404 Pitch, 7 tooth	A-57344*	1
26	"O" RING- Plunger	74388	1		1/2" Pitch, 6 tooth	A-56019*	1
27	SPRING- Plunger	59293	1		7/16" pitch, 7 tooth	A-56377*	1
28	HANDLE BAR- Flush cut (standard)	A-69174-A	1		Includes:		
	HANDLE BAR- Wrap around (optional)	A-58398-B	1	63	BEARING- Needle	55664	1
29	WASHER- Lock, 5/16	83003	3	64	DRUM & HUB- 6 splined	A-65991*	1
30	SCREW- Hex 5/16-18 x 1 1/2	80087	2		DRUM & HUB- 7 splined	A-94117	1
31	HANDGUARD	A-96177-A	1	65	SPROCKET- 3/8" pitch, 7 tooth	63284*	1
	Includes:				SPROCKET- .404 pitch, 7 tooth	63285*	1
32	SCREW- Shoulder	93914	1				
33	WASHER	94867	1				
34	WASHER	70788	1				
34A	DECAL	96990	1				

NOTE 1: 8 tooth sprockets must be used with 55163-1 washer (outer).

* Optional

**C-72
CHAIN SAW**

**CARBURETOR
(HL-141D)
A-59427-A**



REPAIR KIT

95700 (includes 1-9)

C-72 CHAIN SAW

TOOLS

BODY- Assembly Fixture	23136-2A
COLLAR- Bearing installation	22820-2
JACKSCREW- Assembly	A-23672
PLATE- Crankshaft aligning	23670
PLIERS- Retaining ring (piston)	22828
PLUG- Bearing installation (drivecase)	23876
PLUG- Bearing installation (clutch drum)	23139
PLUG- Bearing installation (starter)	23678
Plug- Bearing removal (starter)	A-23679
PLUG- Needle bearing installation	A-23809
PLUG- Seal installation (crankcase)	23233-1
PLUG- Seal installation (drivecase)	23671
PULLER- Magneto rotor	A-22560
Includes:	
SCREW	80069
NUT	81053
SLEEVE- Seal protecting	23693
WRENCH- Combination	A-22808
WRENCH- Hex or socket screw (connecting rod)	23528
WRENCH- Spanner	A-93791

ACCESSORIES

ROPE- Starter (250 ft. reel) #5	57084-1
SHIELD- Rewind spring (inner)	65711
SHIELD- Rewind spring (outer)	65712
ARRESTOR- Spark	A-63518-1A
TUBING (10 ft.)	94772-99
SAFE-T-TIP (standard) on unit	DA-70790-A
Includes:	
RIVET	93251
SCREW	82335

PAINT

SPRAY CAN- Red	23475
----------------	-------

DECAL

No. 23742-A composed of "DIRECT DRIVE", "STARTING INSTRUCTION" and two "HOMELITE" (letters 1/2" and 1/4" high).

HOMELITE DIVISION OF TEXTRON INC.
14401 Carowinds Boulevard
P.O. Box 7047
Charlotte, N.C. 28217

Leon's Chainsaw Parts & Repair
Do Not Sell or Reproduce

2381BNZ

HOMELITE **TEXTRON**

Homelite Division of Textron Inc.