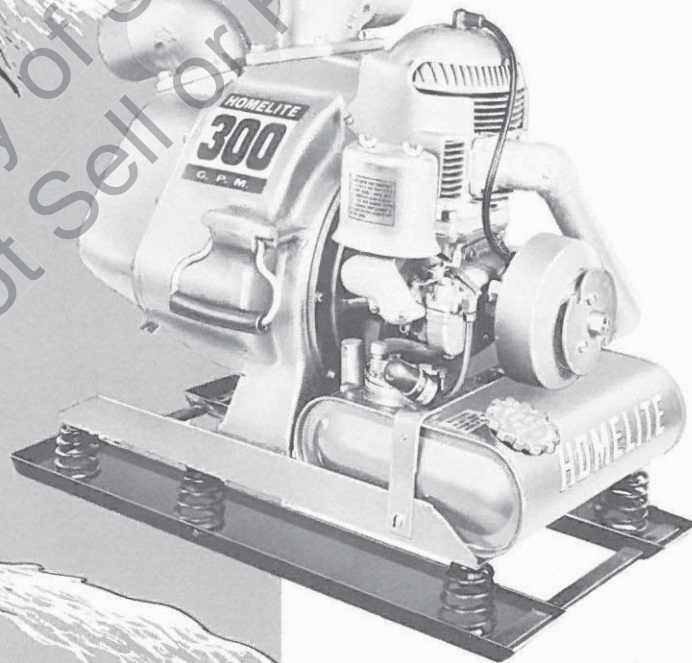
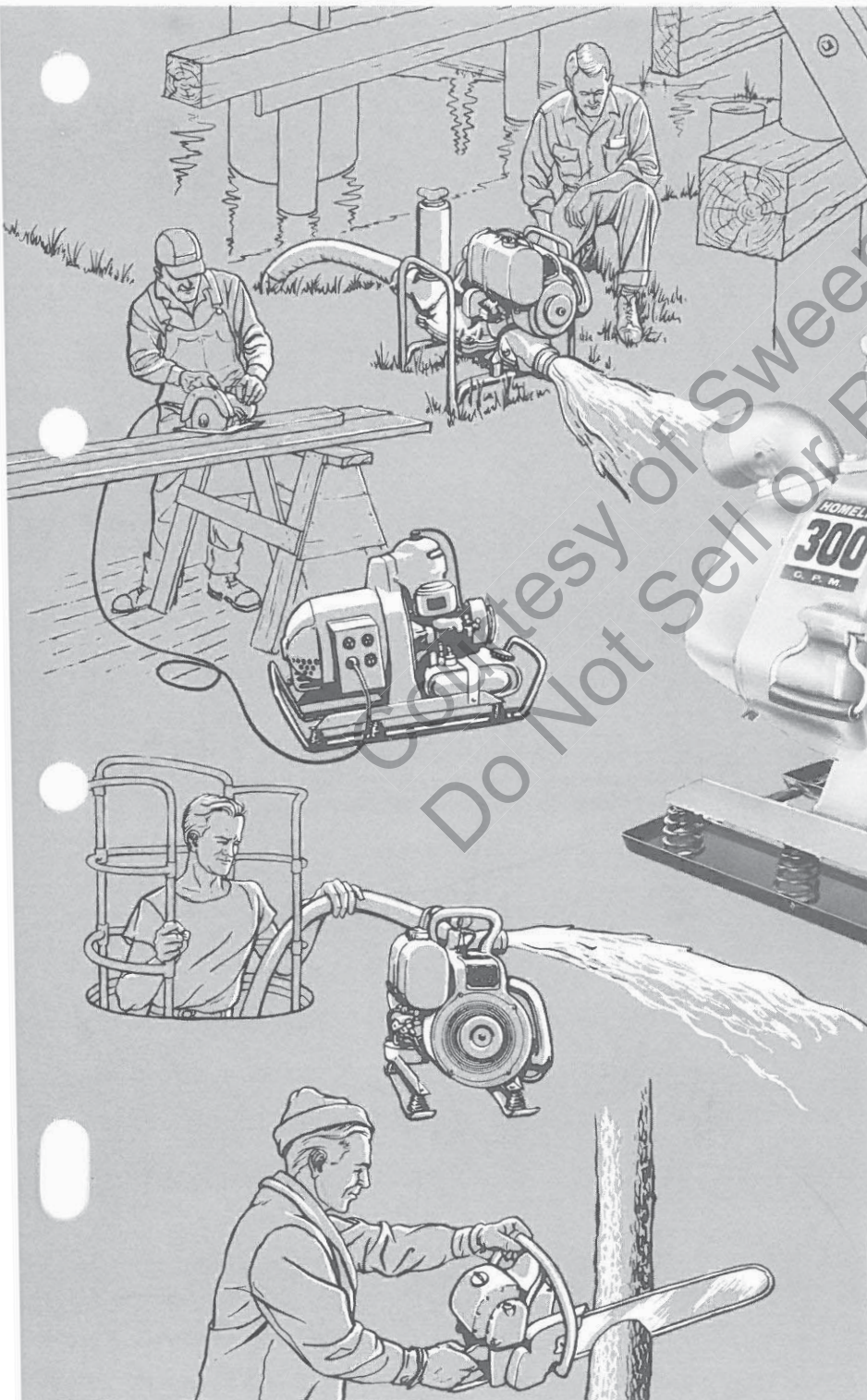


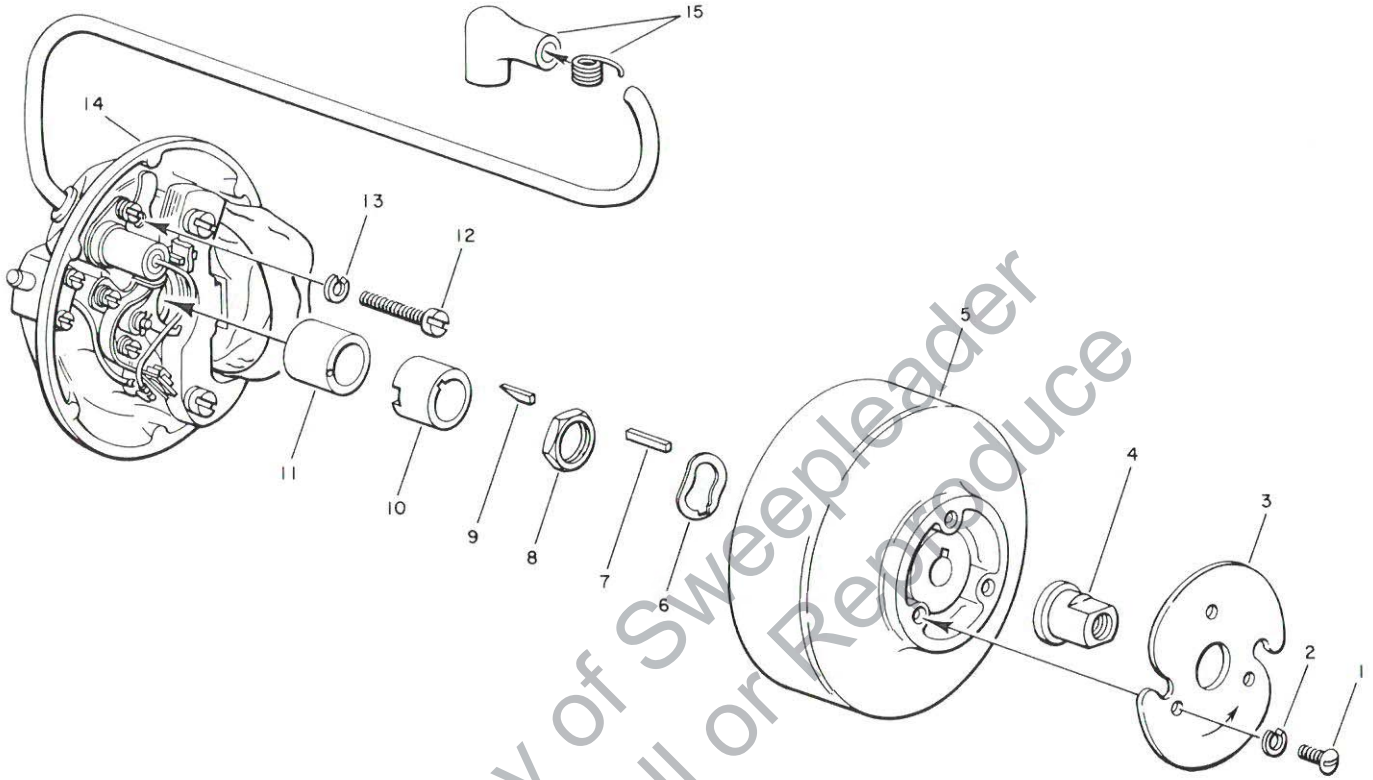
HOMELITE

SELF-PRIMING
CENTRIFUGAL PUMPS
MODELS
8S3-1
8S3-1P
8S3-1R



**PARTS
LIST**

IGNITION PARTS



Index No.	Part No.	Nomenclature	No. Required
1	80251	SCREW—rd. hd., 1/4-20 x 5/8"	3
2	83050	WASHER—lock, 1/4"	3
3	26024	PLATE—starter	1
4	26025	NUT—puller	1
5	26331	ROTOR	1
6	60407	WASHER—spring	1
7	19797	KEY—rotor	1
8	19454	LOCKNUT—cam	1

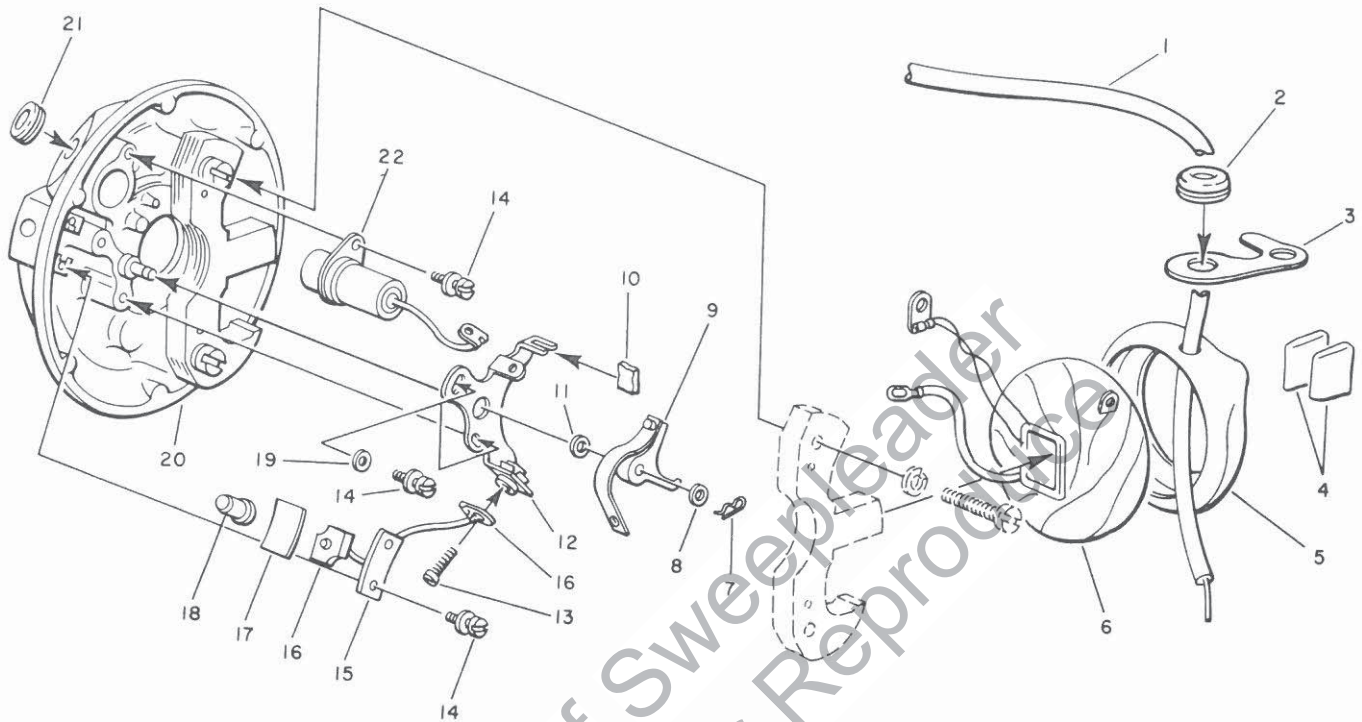
Index No.	Part No.	Nomenclature	No. Required
9	71349	KEY—cam	1
10	71337	CAM	1
11	AA-637	CAM SPACER and PIN ASSEMBLY	1
12	80057	SCREW—fil. hd., 1/4-20 x 7/8"	2
13	83009	WASHER—lock, 1/4"	2
14	*	STATOR ASSEMBLY—(refer to page 3 for breakdown)	1
15	A-33055	SPARKY	1

*Not sold as an assembly.

**HOMELITE
MODEL 8 PUMPS**

always give model and serial number of unit when ordering parts

STATOR PLATE



Index No.	Part No.	Nomenclature	No. Required
	*	STATOR PLATE ASSEMBLY	1
		Composed of items 1 thru 22	
1	89393	LEAD—high tension	1
2	S-1007-3	GROMMET—high tension lead clamp	1
3	30273	CLAMP—high tension lead	1
4	28027	WEDGE—coil	2
5	30262	PROTECTOR—coil	1
6	32090	COIL	1
7	28008	SPRING—lock	1
8	28003	WASHER—pivot	1
	31482	SET OF POINTS	1
		Composed of items 9 thru 12	
9	†	BREAKER ARM	1

Index No.	Part No.	Nomenclature	No. Required
10	30267	WIPER—felt	1
11	†	WASHER—breaker arm	1
12	†	PLATE—fixed contact	1
13	30263	SCREW—ground lead	1
14	30261	SCREW—rd. hd., 8-32 x 5/16"	5
15	30266	PLATE—stop button	1
16	30269	LEAD—ground	1
17	30264	SPRING—stop button	1
18	30265	BUTTON—stop	1
19	28029	WASHER—fixed contact	1
20	32089	STATOR PLATE with CORE	1
21	S-1007-1	GROMMET	1
22	32091	CONDENSER	1

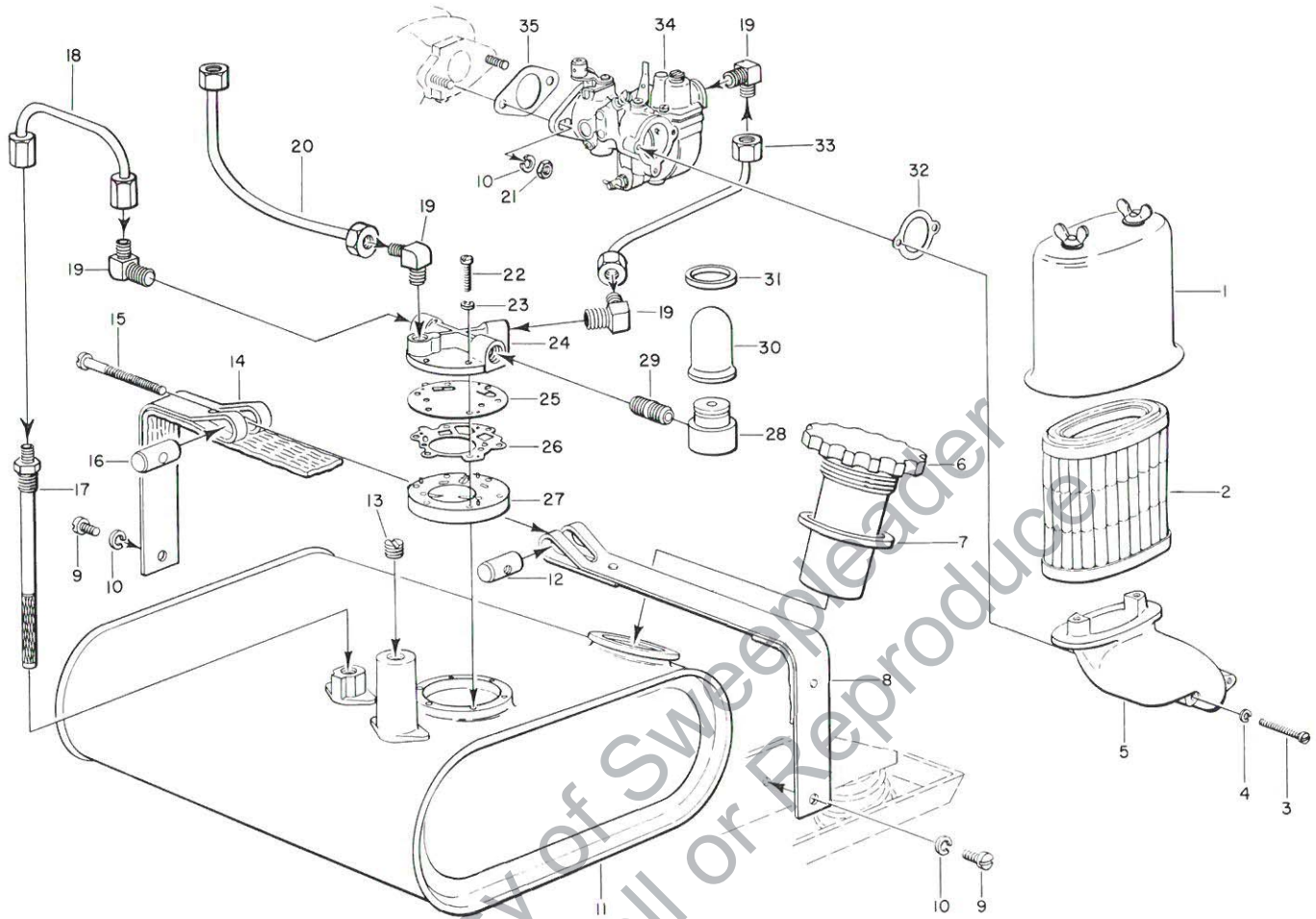
*Not sold as an assembly.

†Not sold separately.

always give model and serial number of unit when ordering parts

HOMELITE
MODEL 8 PUMPS

FUEL SYSTEM



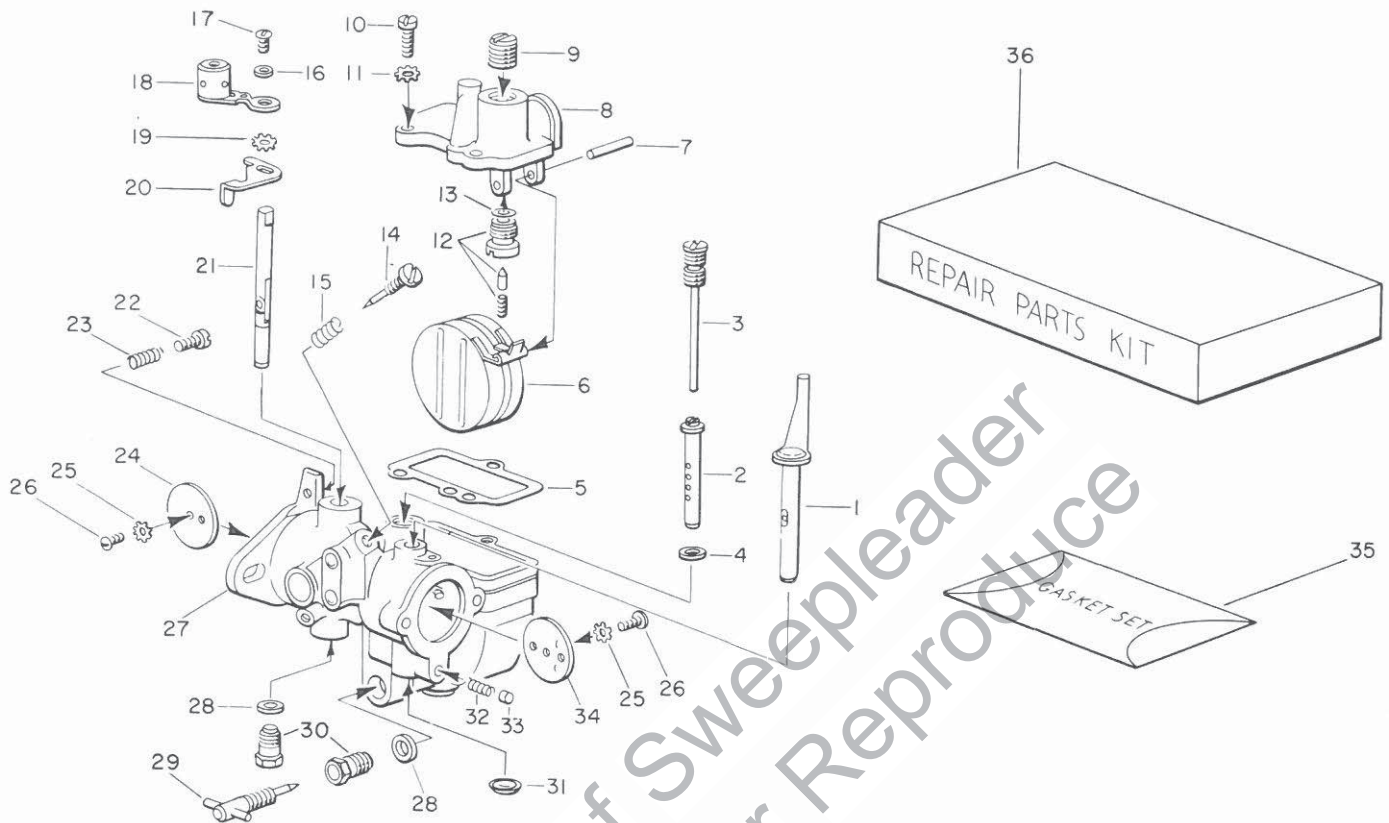
Index No.	Part No.	Nomenclature	No. Required
1	A-62039	AIR SHIELD ASSEMBLY	1
	71467	DECAL—"choke-run"	1
2	62040	ELEMENT	1
3	80124	SCREW—fil. hd., 8-32 x 1 1/8"	2
4	83000	WASHER—lock, No. 8	2
5	33062	ADAPTER—air filter	1
6	AA-29217-1	FILLER CAP ASSEMBLY	1
		Includes	
7	25815-1	GASKET	1
8	A-61604	STRAP—fuel tank (long)	1
9	80136	SCREW—fil. hd., 1/4-20 x 3/8"	2
10	83009	WASHER—lock, 1/4"	4
11	A-61938	FUEL TANK	1
		Includes	
	33140	DECAL	1
12	50052	STUD—threaded	1
13	28097	PLUG—pipe	1
14	A-61603	STRAP—fuel tank (short)	1
15	80419	SCREW—fil. hd., 1/4-20 x 2 1/2"	1
16	18123-A	STUD—plain	1

Index No.	Part No.	Nomenclature	No. Required
17	62238	FUEL FILTER	1
18	A-62227	FUEL LINE (tank to fuel pump "in")	1
19	S-740-1	CONNECTOR	4
20	A-62236	PULSE LINE	1
21	81013	NUT—hex, 1/4-20	2
22	80475	SCREW—fil. hd., 6-32 x 3/4"	6
23	83004	WASHER—lock, No. 6	6
24	A-61963	BODY—fuel pump	1
25	74865	DIAPHRAGM—fuel pump	1
26	74962	GASKET	1
27	77094	COVER—diaphragm	1
28	61983-A	ADAPTER—straight	1
29	19346	NIPPLE—1/8" pipe	1
30	61974-A	BULB—priming	1
31	62219	RING	1
32	25361	GASKET—adapter	1
33	A-62228	FUEL LINE (fuel pump "out" to carburetor)	1
34	A-33146-A	CARBURETOR (refer to page 5 for breakdown)	1
35	19149	GASKET—carburetor	1

**HOMELITE
MODEL 8 PUMPS**

always give model and serial number of unit when ordering parts

CARBURETOR

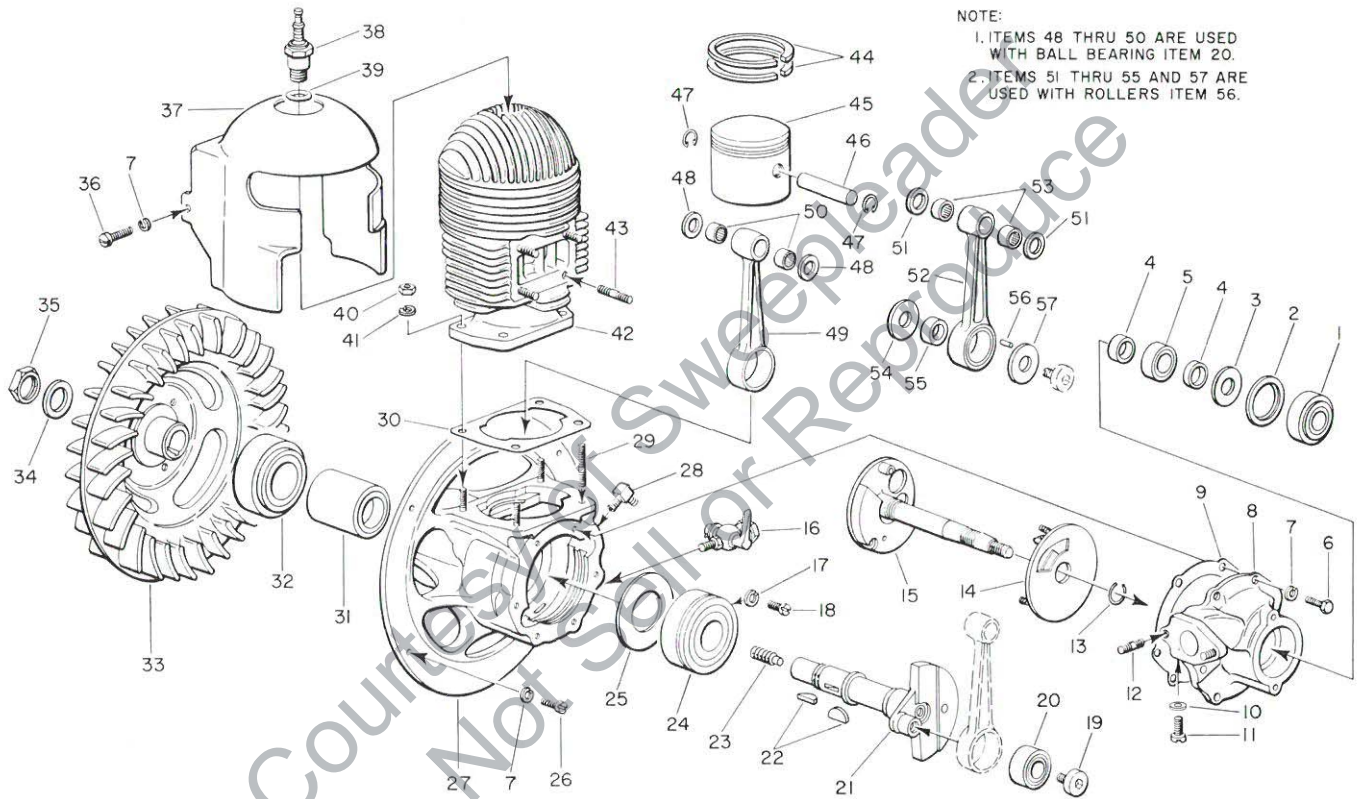


Index No.	Part No.	Nomenclature	No. Required	Index No.	Part No.	Nomenclature	No. Required
	A-33146-A	CARBURETOR					
		Includes items 1 thru 34		18	33344	LEVER—throttle	1
1	33343	CHOKE SHAFT and LEVER	1	19	**83084	WASHER—lock, No. 12	1
2	**33342	NOZZLE	1	20	33345	LEVER—throttle stop	1
3	**33354	BYPASS TUBE ASSEMBLY	1	21	33609	SHAFT—throttle	1
4	73270	GASKET—bypass tube	1	22	**71509	SCREW—fil. hd., 8-32 x 5/8"	1
5	33355	GASKET—float bowl cover	1	23	**28064	SPRING—idle stop	1
6	33348	FLOAT	1	24	72786	SHUTTER—throttle	1
7	**33349	PIN—float pinion	1	25	**83008	WASHER—lock, No. 4	2
8	33340	COVER—float bowl	1	26	**80591	SCREW—rd. hd., No. 4-40 x 1/4"	2
9	30821	PLUG—1/8" pipe	1	27	33610	CARBURETOR BODY	1
10	80022	SCREW—fil. hd., 8-32 x 1/2"	3	28	15037	PACKING	2
11	83029	WASHER—lock, No. 8	3	29	**33352	SCREW—main adjustment	1
12	**33341	MATCHED INLET NEEDLE and SEAT	1	30	33353	PACKING NUT	2
		Includes		31	33350	PLUG—welch	1
13	55344	GASKET	1	32	**73264	SPRING—choke friction	1
14	**33351	SCREW—idle adjustment	1	33	**71494	PLUNGER—choke friction	1
15	**73075	SPRING—idle adjustment screw	1	34	28131	SHUTTER—choke	1
16	**84050	WASHER—flat	1	35	**74585	SET—gasket	1
17	**71521	SCREW—rd. hd., 4-36 x 1/4"	1	36	74586	KIT—repair parts	1

**Included in Repair Parts Kit 74586.

**HOMELITE
MODEL 8 PUMPS**

ENGINE



HOMELITE MODEL 8 PUMPS

always give model and serial number of unit when ordering parts

ENGINE

Index No.	Part No.	Nomenclature	No. Required
1	19400	BEARING—ball (outer)	1
2	19619-A	RING—seal retaining	1
3	19620	RING—sealing	1
4	19385	SPACER—timer bracket	2
5	27504	BEARING—ball (inner)	1
6	80048	SCREW—hex hd., 1/4-20 x 5/8"	6
7	83009	WASHER—lock, 1/4"	14
8	A-62132	TIMER BRACKET	1
		Includes	
9	19484	GASKET—timer bracket	1
10	25304	WASHER—fiber	1
11	80679	SCREW—fil. hd., 1/4-28 x 1/4"	1
12	27464	STUD—carburetor	2
13	40177	SNAP RING—intake valve shaft	1
14	A-33107-A	GOVERNOR ASSEMBLY (model 8S3-1)	1
		Includes	
	A-33282-A	SPRING	1
		Includes	
	62210	SCREW—governor adjusting	1
	A-6045-A	GOVERNOR ASSEMBLY (models 8S3-1P and 8S3-1R)	1
		Includes	
	A-33283	SPRING	1
		Includes	
	62210	SCREW—governor adjusting	1
15	AA-878	INTAKE VALVE ASSEMBLY	1
16	30969	DRAIN COCK	1
17	83041	WASHER—lock, 5/16"	2
18	19238-A	SCREW—main bearing retaining	2
19	60025-D	SCREW—crankpin	1
20	#26654-A	BEARING—connecting rod ball	1
21	18659-C	CRANKSHAFT	1
22	10514	KEY—crankshaft	2
23	29788	STUD—crankshaft	1
24	26181	BEARING—main	1
25	40203	GASKET—crankcase sealing	1
26	80050	SCREW—fil. hd., 1/4-20 x 5/8"	6
27	A-61981	CRANKCASE with SLEEVE	1
28	S-740-1	CONNECTOR—pulse line	1

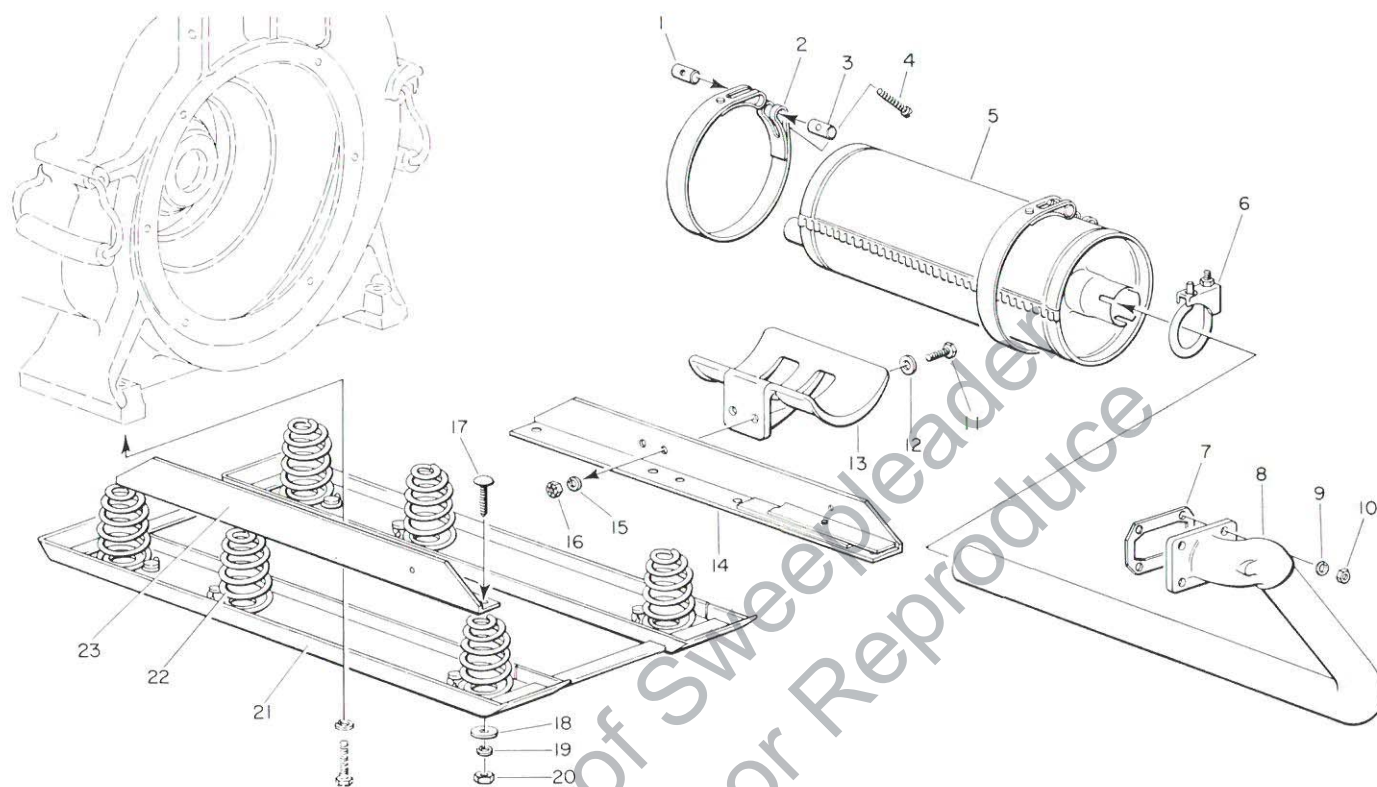
Index No.	Part No.	Nomenclature	No. Required
29	25411	STUD—cylinder	4
30	61552	GASKET—cylinder	1
31	19818	SPACER—crankshaft	1
32	19228	BEARING—fan	1
33	61719	FAN	1
	19561	CORK	3
34	18662	WASHER—fan	1
35	18660	LOCKNUT—fan	1
36	80055	SCREW—fil. hd., 1/4-20 x 3/4"	1
37	61946	SHIELD—cylinder	1
38	62032	SPARK PLUG—Champion UJ-12 (model 8S3-1)	1
	71530	SPARK PLUG—Champion HO-8A (models 8S3-1R and 8S3-1P)	1
		Includes (for all models)	
	39 25038	GASKET—spark plug	1
	40 25412	NUT—hex, 5/16-24	4
	41 83042	WASHER—lock, 5/16"	4
	42 A-61937	CYLINDER ASSEMBLY	1
		Includes	
	43 50294	STUD—exhaust manifold	4
	44 61617	RING—piston	2
	A-61969	PISTON ASSEMBLY	1
		Composed of items 45 thru 47	
	45 †	PISTON	1
	46 †	PIN—piston	1
	47 25502	RING—piston pin retaining	2
	48 60664	WASHER—thrust	2
	49 AA-27016	CONNECTING ROD ASSEMBLY	1
		Includes	
	50 A-26782	NEEDLE BEARING—set of 2	1
	51 62222	WASHER—thrust	2
	52 AA-61256	CONNECTING ROD ASSEMBLY	1
		Includes	
	53 60182	NEEDLE BEARING—set of 2	1
	54 62241	WASHER—back	1
	55 61222	RACER—inner	1
	56 #61220	ROLLERS 61260	25
	57 62241	WASHER—front	1

† Not sold separately.

Model 8 Pumps with ball bearing in connecting rod use the Formica thrust washers, index No. 48, part No. 60664, with piston assembly part No. A-61969, and connecting rod assembly, index No. 49, part No. AA-27016.

Model 8 Pumps with roller bearings in connecting rod use aluminum thrust washers, index No. 51, part No. 62222, with piston assembly part No. ~~AA-61610~~ **AA-61969**, connecting rod assembly, index No. 52, part No. AA-61256, plus index Nos. 54, 55, and 57. ~~7 56~~

MOUNTING AND MUFFLER PARTS



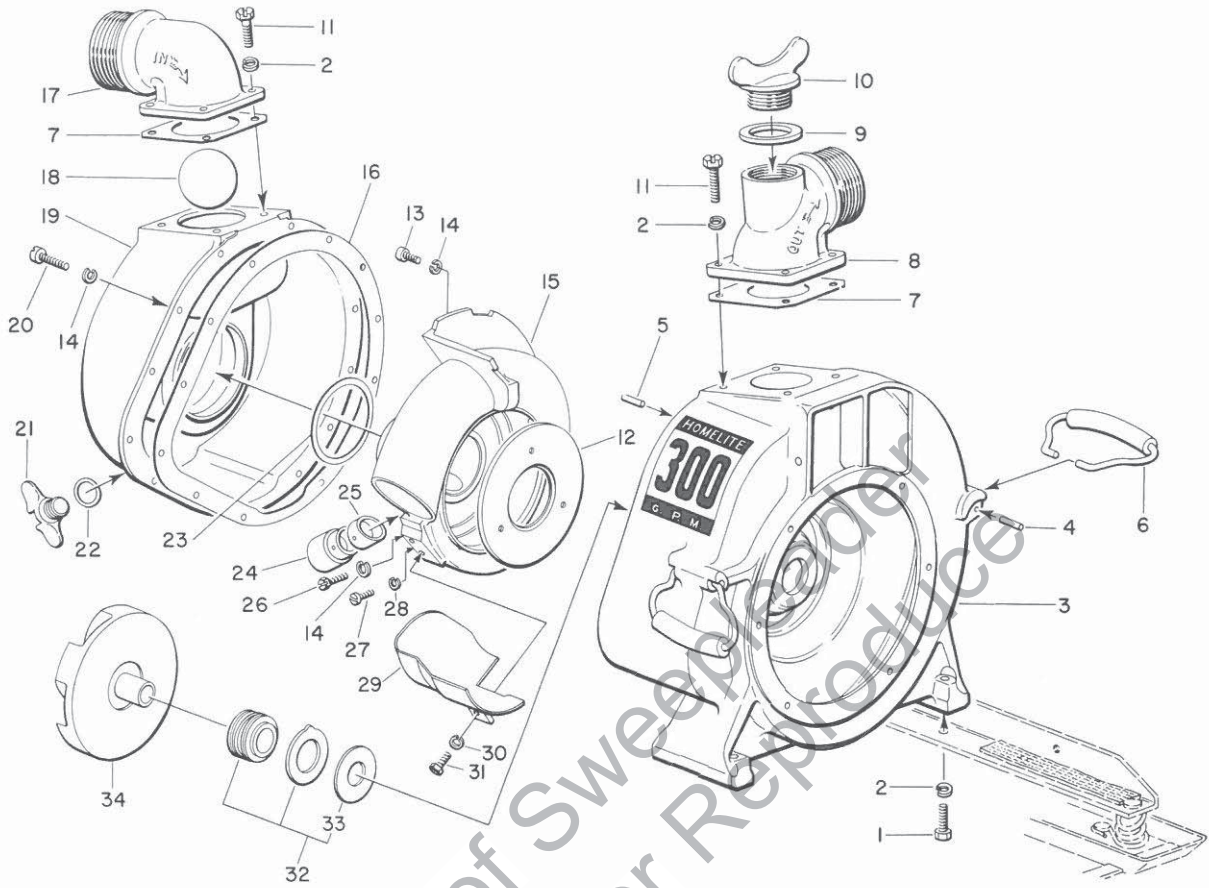
Index No.	Part No.	Nomenclature	No. Required
1	50052	STUD—threaded strap	2
2	AA-29146	STRAP—muffler	2
3	18123-A	STUD—plain strap	2
4	80236-1	SCREW—fil. hd., 1/4-20 x 2 1/4"	2
5	27782	MUFFLER	1
6	25236-1	CLAMP—muffler	1
7	60337	GASKET—exhaust flange	1
8	AA-60336	MANIFOLD ASSEMBLY	1
9	83009	WASHER—lock, 1/4"	4
10	81065	NUT—hex, 1/4-28	4
11	80085	SCREW—hex hd., 5/16-18 x 1"	2
12	84001	WASHER—flat, 5/16"	2

Index No.	Part No.	Nomenclature	No. Required
13	60335	BRACKET—muffler	1
14	A-61968	ANGLE IRON—right	1
15	83002	WASHER—lock, 5/16"	2
16	81096	NUT—lock, 5/16-18	2
17	82003	BOLT—carriage 3/8-18 x 1"	6
18	84046	WASHER—flat, 5/16"	6
19	83003	WASHER—lock 3/16"	6
20	81018	NUT—hex, 5/16-18	6
21	A-61598	BASE ASSEMBLY	1
		Includes	
22	25407	SPRING—foot	6
23	A-61967	ANGLE IRON—left	1

**HOMELITE
MODEL 8 PUMPS**

always give model and serial number of unit when ordering parts

PUMP PARTS



Index No.	Part No.	Nomenclature	No. Required
1	80599	BOLT—hex hd., 3/8-16 x 1 1/4"	4
2	83018	WASHER—lock, 3/8"	12
A-62272	AA-32406	PUMP BODY A-62168 loss Includes DECALCOMANIA Not included handles	1
4	29599	PIN—carrying handle	1
5	29599-1	PIN—locating	1
6	AA-31171	CARRYING HANDLE ASSEMBLY	2
7	#20002	GASKET	1
8	27492	FITTING—discharge	1
9	#18108	GASKET—wing nut plug	1
10	18127-B	PLUG—wing nut	1
11	80374	BOLT—hex hd., 3/8-16 x 1"	8
12	33109-1	PLATE—wear	1
13	80392	SCREW—fil. hd., 1/4-20 x 3/8"	3
14	83009	WASHER—lock, 1/4"	16
15	32066-2	IMPELLER HOUSING (models 8S3-1 and 8S3-1R)	1
	33179-A	IMPELLER HOUSING (model 8S3-1P)	1
16	#28511	GASKET—pump body	1
17	27409-2	ELBOW—suction	1
18	#20011-2	BALL—check	1

Index No.	Part No.	Nomenclature	No. Required
19	26661-B	END PLATE	1
20	80218-1	SCREW—hex hd., 1/4-20 x 3/4"	13
21	29429	PLUG—drain P-1176	1
22	19325	GASKET—drain plug	1
23	28616-2	GASKET—end plate	1
24	#AA-29182	PRIMING TUBE ASSEMBLY	1
25	29574	TUBE—auxiliary priming (models 8S3-1 and 8S3-1R)	1
	61759	TUBE—auxiliary priming (model 8S3-1P)	1
26	80493	SCREW—hex hd., 1/4-20 x 1 1/2"	1
27	80393	SCREW—fil. hd., 10-32 x 1/2"	1
28	83006	WASHER—lock, No. 10	1
29	61973-A	BAFFLE	1
30	83002	WASHER—lock, 5/16"	2
31	80084	SCREW—hex hd., 3/16-18 x 7/8"	2
32	#A-62073	SEAL ASSEMBLY Includes WASHER—seal	1
33	18684-2	IMPELLER (model 8S3-1)	1
34	62148	IMPELLER (model 8S3-1P)	1
	A-62201-A	IMPELLER (model 8S3-1P)	1
	62097	IMPELLER (model 8S3-1R)	1

A-62000 Imp. Hsg. Assy. 8S3-1 # These parts must be changed when pumping oil; use Oil Conversion Kit A-62149.
 A-62239 ✓ ✓ ✓ 8S3-1R Refer to page 10 for Oil Conversion Kit A-62149.
 A-61750-A ✓ ✓ ✓ 8S3-1P

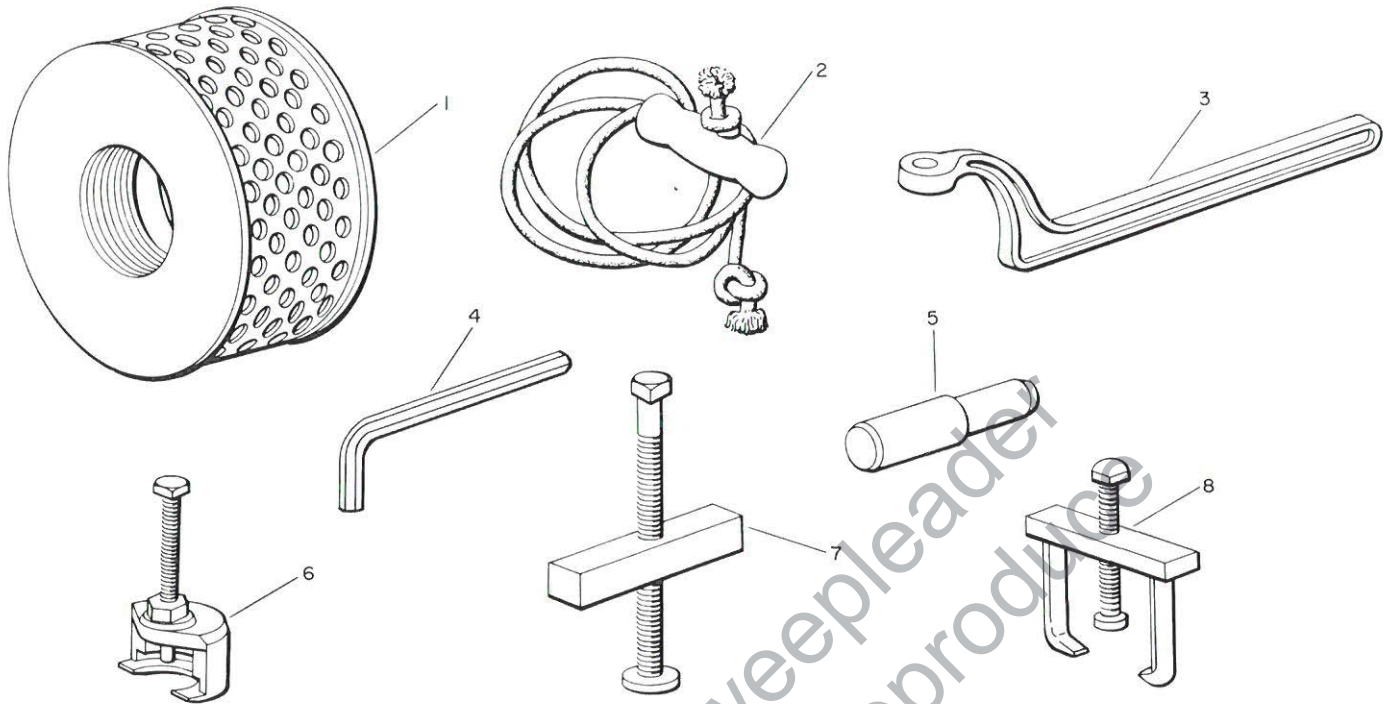
Use Premium Seal Set A-61992 in Pressure Pump. No longer supplied
 Use A-62073 Ceramic Seal

always give model and serial number of unit when ordering parts

**HOMELITE
MODEL 8 PUMPS**

TOOLS AND ACCESSORIES

OIL CONVERSION KIT



Index No.	Part No.	Nomenclature	No. Required
1	# 30129	STRAINER—3"	1
2	# AA-290	ROPE ASSEMBLY—starting	1
3	# 20024	WRENCH—3" spanner	1
4	22481	WRENCH—Allen 3/8"	1
5	S-395	REMOVER—timer bracket bearing	1
6	A-22903	PULLER ASSEMBLY—for roller bearing ..	1
7	AA-202	REMOVER—fan	1
8	AA-203-A	PULLER ASSEMBLY—for ball bearing	1

Supplied with unit.

OIL CONVERSION KIT

Part No.	Nomenclature	No. Required
28511-1	GASKET—pump body	1
20002-1	GASKET—discharge fitting	1
18108-1	GASKET—wing nut plug	1
20002-2	GASKET—suction elbow	1
20011-3	BALL—3"	1
30059	TUBE—by-pass	1

**HOMELITE
MODEL 8 PUMPS**

always give model and serial number of unit when ordering parts

HOMELITE

Authorized Sales and Service Branches

Homelite sales and service factory branches are located throughout the country. Field representatives and factory-trained servicemen are always available, ready and able to keep your Homelites running in top performance at all times. See the "Yellow Pages" for the address and phone number of your nearest Homelite Branch office.

Alabama		
Birmingham		
California		
Alhambra (Los Angeles area)		
Fresno		
Sacramento		
S. San Francisco		
Colorado		
Denver		
Connecticut		
Byram		
Hartford		
Florida		
Jacksonville		
Miami		
Georgia		
Atlanta		
Illinois		
Bloomington		
Springfield		
Stone Park (Chicago area)		
Indiana		
Indianapolis		
Louisiana		
Bossier City		
Metairie		
Maine		
Orono		
Maryland		
Baltimore		
Massachusetts		
Allston (Boston area)		
Michigan		
Detroit		
Escanaba		
Grand Rapids		
Saginaw		
Minnesota		
St. Paul		
Mississippi		
Jackson		
Missouri		
Kansas City		
St. Louis		
Nebraska		
Omaha		
New Jersey		
North Arlington		
Woodbridge		
New York		
Buffalo		
Latham (Albany area)		
Rochester		
Syracuse		
North Carolina		
Charlotte		
Raleigh		
Ohio		
Cincinnati		
Cleveland		
Toledo		
Oklahoma		
Oklahoma City		
Oregon		
Portland		
Pennsylvania		
Alltoona		
Erie		
Harrisburg		
Hazleton		
Malvern		
Philadelphia		
Pittsburgh		
Tennessee		
Knoxville		
Memphis		
Texas		
Cleveland		
Dallas		
Houston		
Lufkin		
Silsbee		
Utah		
North Salt Lake		
Virginia		
Arlington		
Richmond		
Roanoke		
Washington		
Seattle		
Spokane		
West Virginia		
Charleston		
Clarksburg		
Wisconsin		
Milwaukee		
DOMINION OF CANADA		
TERRY MACHINERY CO., LTD.		
Quebec		
Montreal		
Alberta		
Edmonton		
British Columbia		
Vancouver		
New Brunswick		
Moncton		
Ontario		
Ottawa		
Toronto		

HOMELITE *Carryable* PRODUCTS

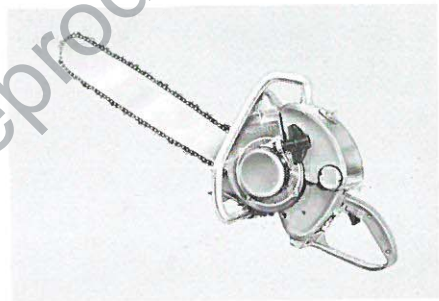
powered by famous HOMELITE engines

Homelite's two-cycle gasoline engines are the most efficient and dependable units of their kind ever built. Their two-cycle design, developed to perfection by Homelite engineers over the past 35 years, gives maximum power for the least weight because power is produced at every piston down stroke. As an added advantage, this design requires fewer moving parts which means greater dependability and lower maintenance.



GENERATORS

Alternating or Direct Current
Gasoline-Engine-Driven
Sizes: 1500 to 5000 watts
Voltages: 6 to 230 volts
Frequencies: 50 to 400 cycles



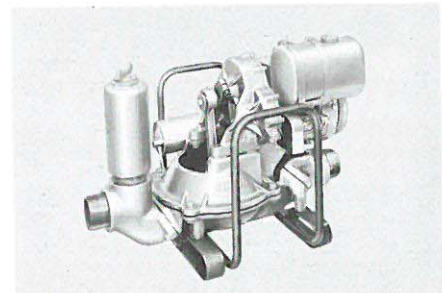
CHAIN SAWS

Gasoline-Engine-Driven
Gear Drive
Direct Drive
4 HP to 7 HP
Straight Blade and Bows



PUMPS

Self-Priming Centrifugal
Gasoline-Engine-Driven
Sizes: 1½", 2", 3"
Capacities: 5,500 to 15,000 gph



3" DIAPHRAGM PUMP

For all heavy duty pumping
Gasoline-Engine-Driven
Capacity: 5000 g.p.h.
Weight: 120 pounds

HOMELITE

a division of Textron Inc.
PORT CHESTER, N. Y.