

PART NO. 17598

Printed in U.S.A.

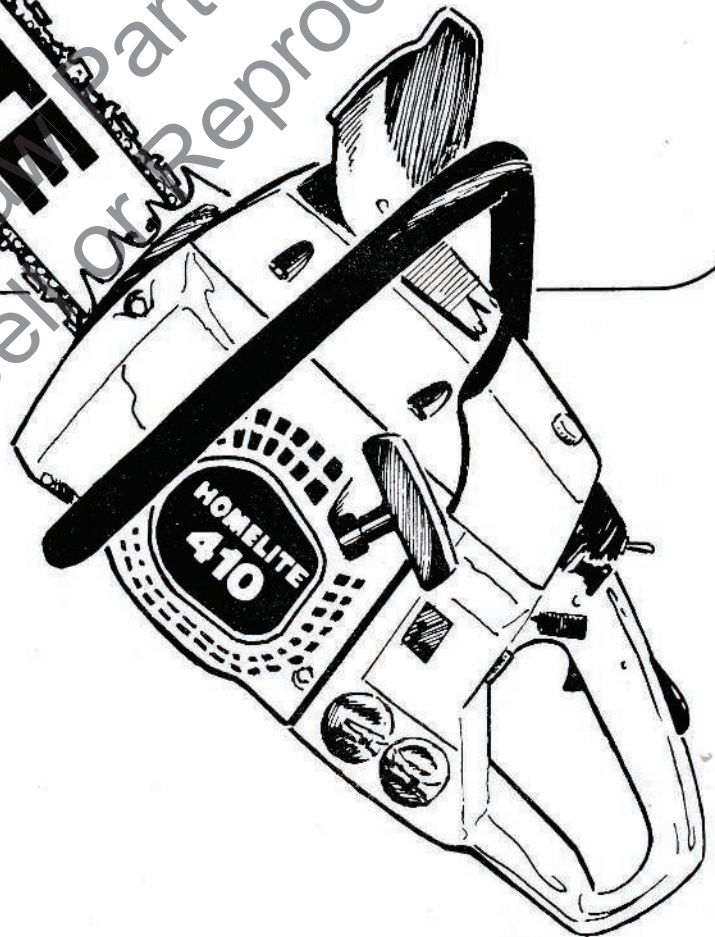
Price 35¢

PARTS LIST

HOMELITE®

410

CHAIN SAW

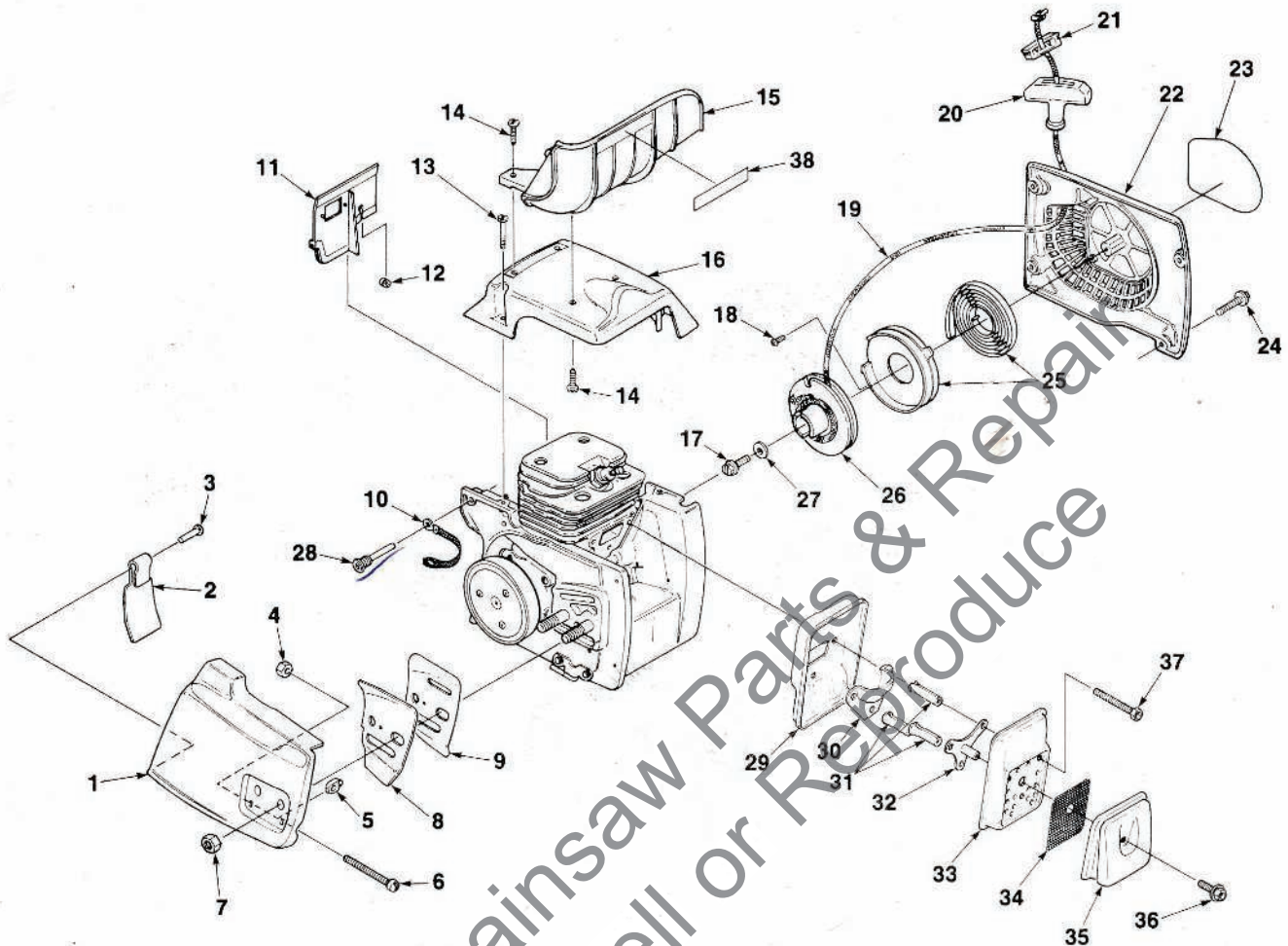


HOMELITE **TEXTRON**

Homelite Division of Textron Inc.

410 CHAIN SAW

FIGURE 1

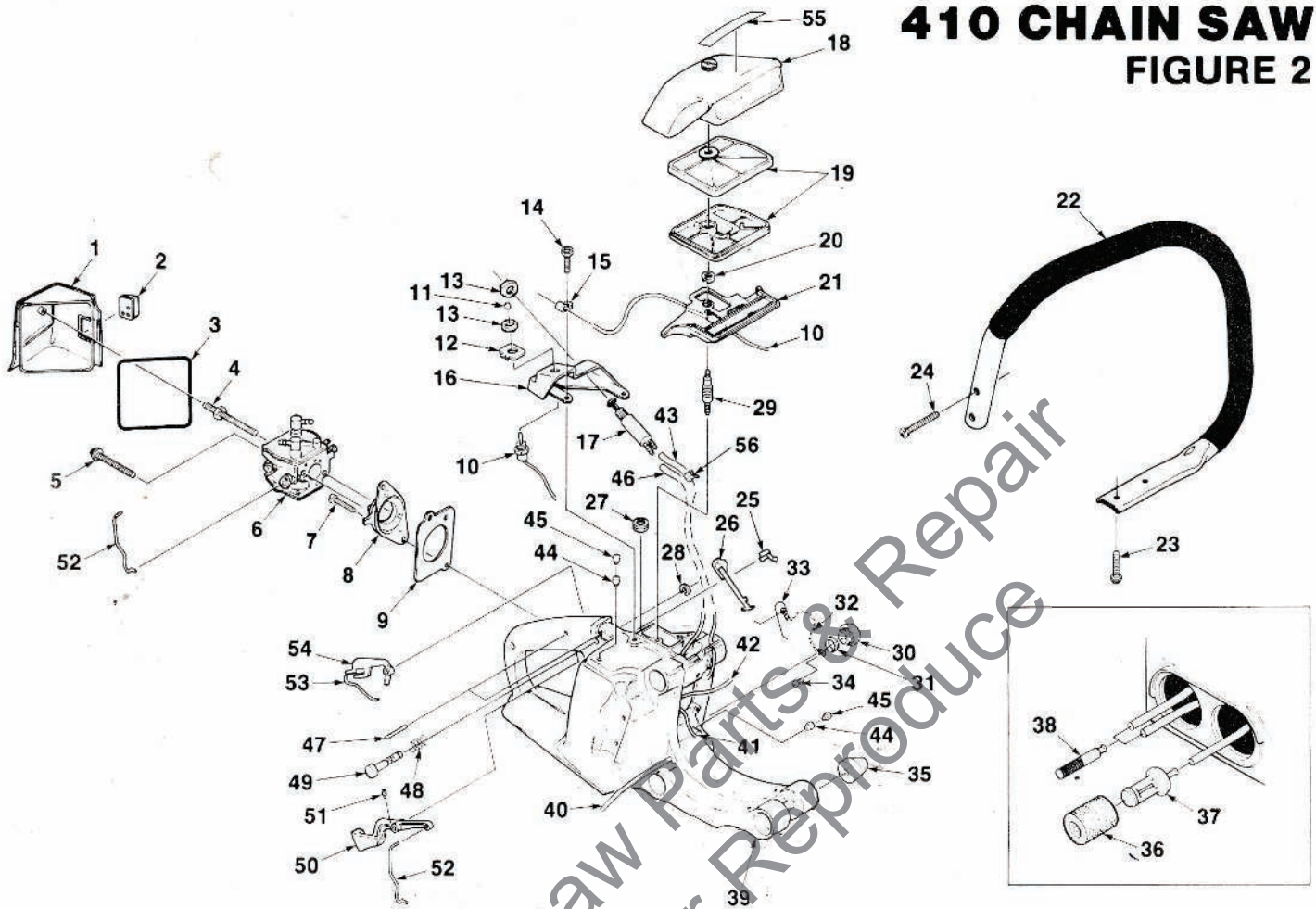


NO.	DESCRIPTION	PART NO.	QTY.	NO.	DESCRIPTION	PART NO.	QTY.
1	COVER- Drivecase	A-93330	1	20	GRIP- Starter Rope	A-69962-B	1
	Includes:				Includes:		
2	SHIELD- Sawdust	93439	1	21	INSERT- Rope Retaining	70018-A	1
3	RIVET- Pan hd.	85154	1	22	HOUSING- Starter	A-93168	1
4	NUT- Hex 1/4-20	81204	1	23	DECAL- "410"	93415	1
5	PIN- Guide bar adj.	93039	1	24	SCREW- Hex Sems 10-24 x .625	88050	4
6	SCREW- Guide bar adj.	63367	1	25	SPRING- Rewind	A-93370	1
7	NUT- 3/8-16	81089-2	1	26	STARTER PULLEY & CUP	A-93359	1
8	PLATE- Guide bar (outer) 410 only	70400	1	27	WASHER- Retaining	58763	1
9	PLATE- Guide bar (inner)	70399	1	28	PIN- Isolator	93367	6
10	STRAP- Ground	A-93459	1	29	BODY- Muffer	93347	1
11	DEFLECTOR- Air	93395	1	30	PLATE- Stiffner	93349	1
12	GROMMET	93357	1	31	SPACER- Muffer	93983-03	3
13	SCREW- Cylinder cover 8-32 x 7/8	93397	3	32	SPACER & PLATE	A-93353	1
14	SCREW- Thread rolling plastite #10 x 5/8	82312	4	33	COVER- Muffer	93348-01	1
15	GUARD- Hand	93465	1	34	SCREEN- Spark	93344	1
16	COVER- Cylinder (410 only)	93163-1	1	35	CAP- Muffer exhaust	A-93355	1
17	SCREW- #10 x .625	93417	1	36	SCREW- Hex Sems 8-32 x .375	88041	1
18	SCREW- Plastite 6 x 1/4	82256	1	37	SCREW- Hex hd. 12-24 x 1 7/8	94129	3
19	ROPE- #5 45"	93418	1	38	LABEL- Homelite	96479	1

ALWAYS FURNISH MODEL AND SERIAL NUMBER WHEN ORDERING PARTS.

410 CHAIN SAW

FIGURE 2



NO.	DESCRIPTION	PART NO.	QTY.	NO.	DESCRIPTION	PART NO.	QTY.
1	COVER- Carburetor	A-93431	1	28	RING- Retaining	93377	1
	Includes:			29	STUD- Threaded	93382	1
2	GROMMET (Hi-Lo)	93470	1	30	CAP- Fuel & Oil	A-93420	2
3	GASKET- Carburetor Cover	93424	1		Includes:		
4	STUD- Shoulder	93468	1	31	GASKET- Fuel & Oil Cap	93422	2
5	SCREW- Hex Sems 10-24 x 1 7/8	93460	1	32	BEAD- Chain	69502	2
6	CARBURETOR- (Walbro WS-16)	A-93393	1	33	RETAINER- Filler Cap	69503	2
7	SCREW- Soc. hd. 10-24 x 1/2	82245	2	34	SCREW- Plastite	82256	2
8	PLATE- Carburetor	93306-1	1	35	ISOLATOR	93368	6
9	SPACER- Carburetor	93461	1	36	FILTER- Fuel	A-59251	1
10	SWITCH & LEAD	93438	1		Includes:		
11	SLEEVE	69092	1	37	FILTER- Fuel	59253-1	1
12	PLATE- Indicating	93388	1	38	FILTER- Oil	A-59009-A	2
13	NUT- Toggle Switch	72084-A1	3	39	HOUSING- Engine	A-93446	1
14	SCREW- Hex Sems hd. 10-24 x 1/2	88048	2		Includes:		
15	CLAMP- Wire	96717	1	40	TUBING- 6 3/4" (Auto. pick up)	93112-27	1
16	PANEL- Rear	93215-1	1	41	TUBING- 4 3/4" (Pulse line)	93157-19	1
17	PUMP- Manual Oil	A-93476	1	42	TUBING- 8 3/4" (Fuel pick up)	93112-32	1
18	COVER- Air Filter	A-93402	1	43	TUBING- 5" (Man. delivery)	93112-20	1
19	FILTER- Air	A-93401	1	44	VALVE- Check	69451	2
20	RING- Retaining	93389	1	45	FILTER	93410	2
21	SUPPORT- Filter cover	93364	1	46	TUBING 9 3/4" (Man. pick up)	93112-36	1
22	HANDLE BAR (Flush Cut)	A-93409	1	47	PIN- Trigger	68548	2
	Kit- Handle bar (Wrap Around) Opt.	A-96605	1	48	SPRING- Compression	93376	1
	Includes:			49	PIN- Throttle lock	93375	1
	BUSHING	93428	1	50	TRIGGER	A-93374	1
	BRACKET	93427-1	1		Includes:		
	SCREW- Oval hd. 10-24	82429	2	51	SCREW- Set 6-32 x 1/4	82373	1
23	SCREW- Hex Sems 10-24 x .625	88050	2	52	ROD- Throttle	93371	1
24	SCREW- 10-24 x 1 1/4	82389	2	53	SPRING- Flat	93386	1
25	RETAINER- Choke	93381	1	54	LOCK- Trigger	93385	1
26	ROD- Choke	93372	1	55	LABEL- Warning	96731	1
27	BOOT- Throttle rod	58348	1	56	CLAMP	93426	1

ALWAYS FURNISH MODEL AND SERIAL NUMBER WHEN ORDERING PARTS.

410 CHAIN SAW

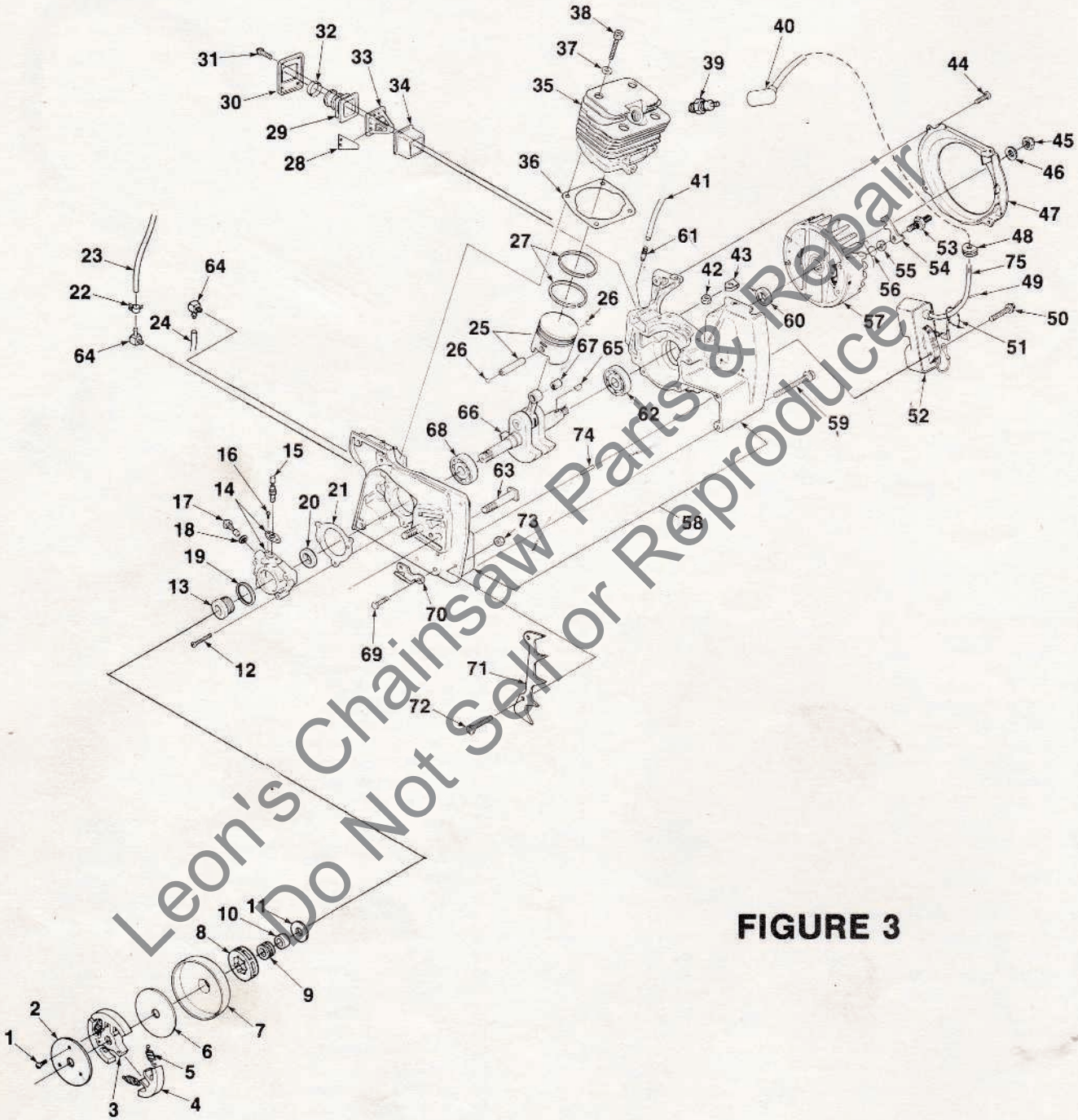


FIGURE 3

ALWAYS FURNISH MODEL AND SERIAL NUMBER WHEN ORDERING PARTS.

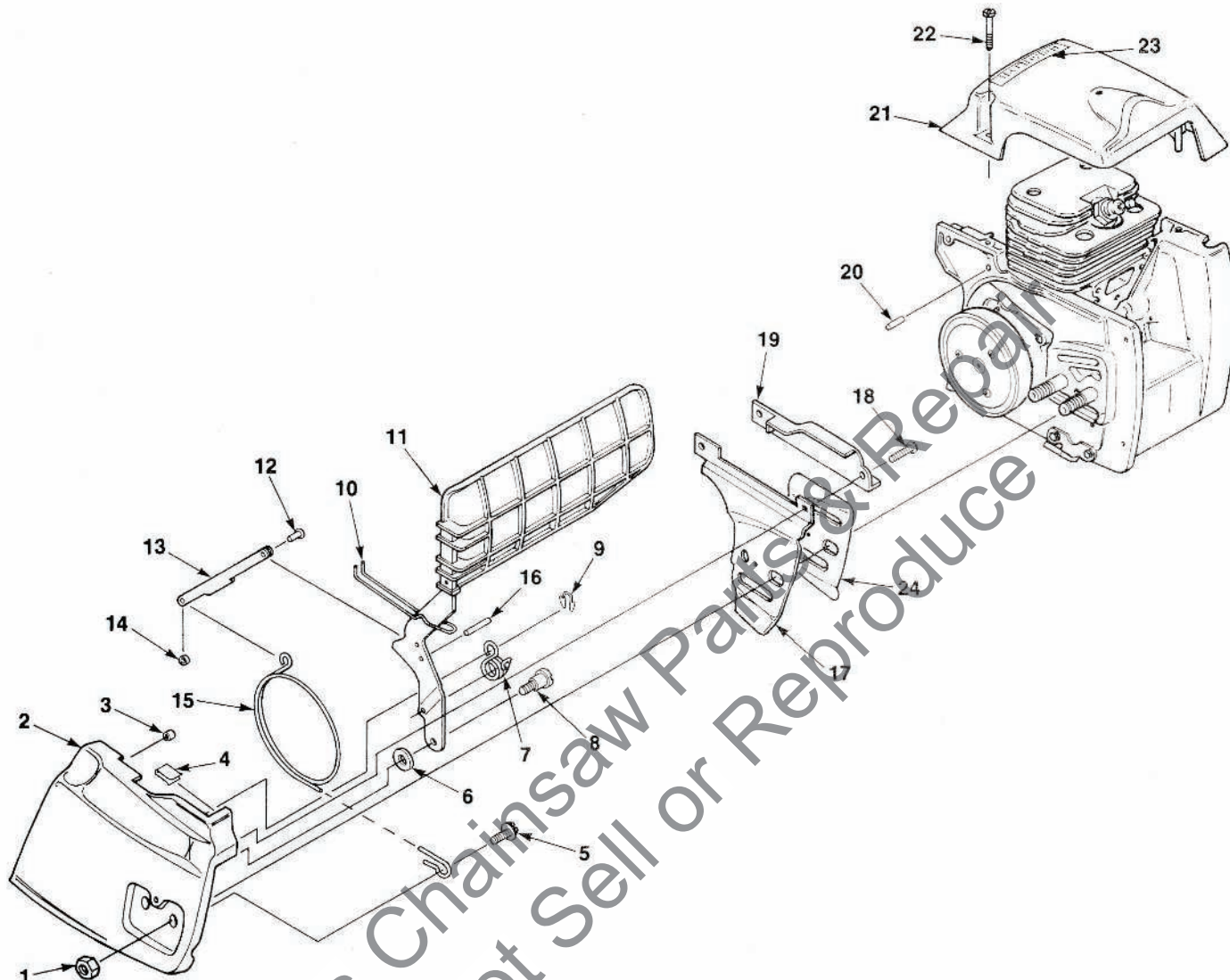
410 CHAIN SAW

NO.	DESCRIPTION	PART NO.	QTY.	NO.	DESCRIPTION	PART NO.	QTY.
1	SCREW- Torx	93126	3	42	NUT- Center lock 10-24	81208	4
2	COVER- Clutch	93628	1	43	RETAINER- Nut	12689	2
3	SPIDER- Clutch	93639	1	44	SCREW- Pan Hd. 6-32 x 3/8	82251	4
4	SHOE- Clutch	A-93632	3	45	NUT- Lock 3/8 - 24	81255	1
5	SPRING- Clutch	93814-A	3	46	WASHER- Flat	95479	1
6	WASHER- Thrust	93650	1	47	SCROLL- Air guide	93312	1
7	DRUM & HUB	A-94302	1	48	GROMMET	58318	1
8	SPROCKET 3/8 Pitch 7 Tooth	63284	1	49	SWITCH & LEAD	93438	1
9	BEARING- Roller	64124	1	50	SCREW- Hex Sems 10-24 x .875	88052	2
10	RACE- Inner	64129-A	1	51	CLAMP- Wire	50729	1
11	WASHER- Thrust	63462	1	52	MODULE	A-93414	1
12	SCREW- Fil. hd. 10-24 x 7/8	80660	3	53	STUD	58757-E	2
13	WORM- Oil pump	93336	1	54	PAWL- Starter	58756	2
14	PUMP- Automatic Oil	A-93319	1	55	WASHER- Lock	70901	2
	Includes:			56	SPRING- Starter Pawl	65375-2	2
15	GEAR- Plunger & Hel.	93321	1	57	ROTOR	93313	1
16	SCREW- 4-40 x 1/4	80919	2	58	CRANKCASE	A-93441	1
17	SCREW- Cam	64102-A	1		Includes:		
18	GASKET	59736	1	59	SCREW- 10-24 x 1.75	88056	5
19	SEAL- Felt	59926	1	60	SEAL	12282-A	1
20	SEAL	12282-A	1	61	FITTING	69833	1
21	GASKET	93329	1	62	BEARING- Ball	94621	1
22	CLAMP	93426	1	63	BOLT- Guide bar	93310	2
23	TUBING 5"	93112-20	1	64	FITTING	70204	2
24	TUBING 6 3/4"	93112-27	1	65	KEY- Woodruff	75078	1
25	PISTON & PIN	A-93443	1	66	CRANKSHAFT	A-93444	1
	Includes:				Includes:		
26	RING- Retaining	64813	2	67	BEARING- Needle	93369	1
27	PISTON RING	93216	2	68	BEARING- Ball	94621	1
28	REED	93325	1	69	SCREW- Hex Sems 8-32 x 1/2	88042	2
29	CONNECTOR- Carburetor	93327	1	70	STOP- Chain	70705	1
30	RETAINER- Reed valve	93328	1	71	KIT- Spike bumper	A-93445	1
31	SCREW- Washer hd. 8-32 x 5/8	82291	4		Includes:		
32	STIFFNER- Connector	93323	1	72	SCREW 10-24 x 1/2"	82415	2
33	SEAT- Reed valve	93324	1	73	NUT	81208	2
34	RETAINER- Reed	93326	1	74	PIN- Dowel	31062	2
35	CYLINDER	A-93442	1	75	LEAD- High tension (Note 1)	69326	1
	Includes:				NOT SHOWN:		
36	GASKET	93338	1		SAFE•T•TIP	A-70790-A	1
37	WASHER	12021	4		Includes:		
38	SCREW- Soc hd. 10-24 x 1 1/8	93399	4		SCREW	82335	1
39	SPARK PLUG (DJ6J)	65130-S	1				
40	TERMINAL	A-33055	1				
41	TUBING	93157-19	1				

NOTE 1 - Cut replacement lead 69326 to 6".

410 SL CHAIN SAW ONLY

FIGURE 4



NO.	DESCRIPTION	PART NO.	QTY.	NO.	DESCRIPTION	PART NO.	QTY.
1	NUT- 3/8-16	81089-2	1	13	LINK- Pivot	93488	1
2	COVER- Drivecase	A-93494-2	1	14	SPACER	93495	1
3	BUSHING	95839	1	15	BAND- Brake	93490	1
4	CLIP- Spring	93435	1	16	PIN- Dowel	65365	1
5	SCREW- 1/4-20 x 3/8	80136-1	1	17	PLATE- Guide bar (outer)	93481	1
6	WASHER- Flat	93466	1	18	SCREW- Pan hd. 6-32 x 3/8	82251	2
7	SPRING- Torsion	93489	1	19	SHIELD	93482	1
8	SCREW- Shoulder	93492	1	20	PIN	70253	1
9	RING- Retaining	93464	1	21	COVER- Cylinder	93163	1
10	SPRING	93491	1	22	SCREW- Cylinder 8-32 x 7/8	93397	3
11	GUARD- Hand (w/brake)	A-93485	1	23	LABEL- Homelite	96479	1
	Includes:			24	PLATE- Guide bar	70399	1
12	RIVET- Truss hd.	93436	1				

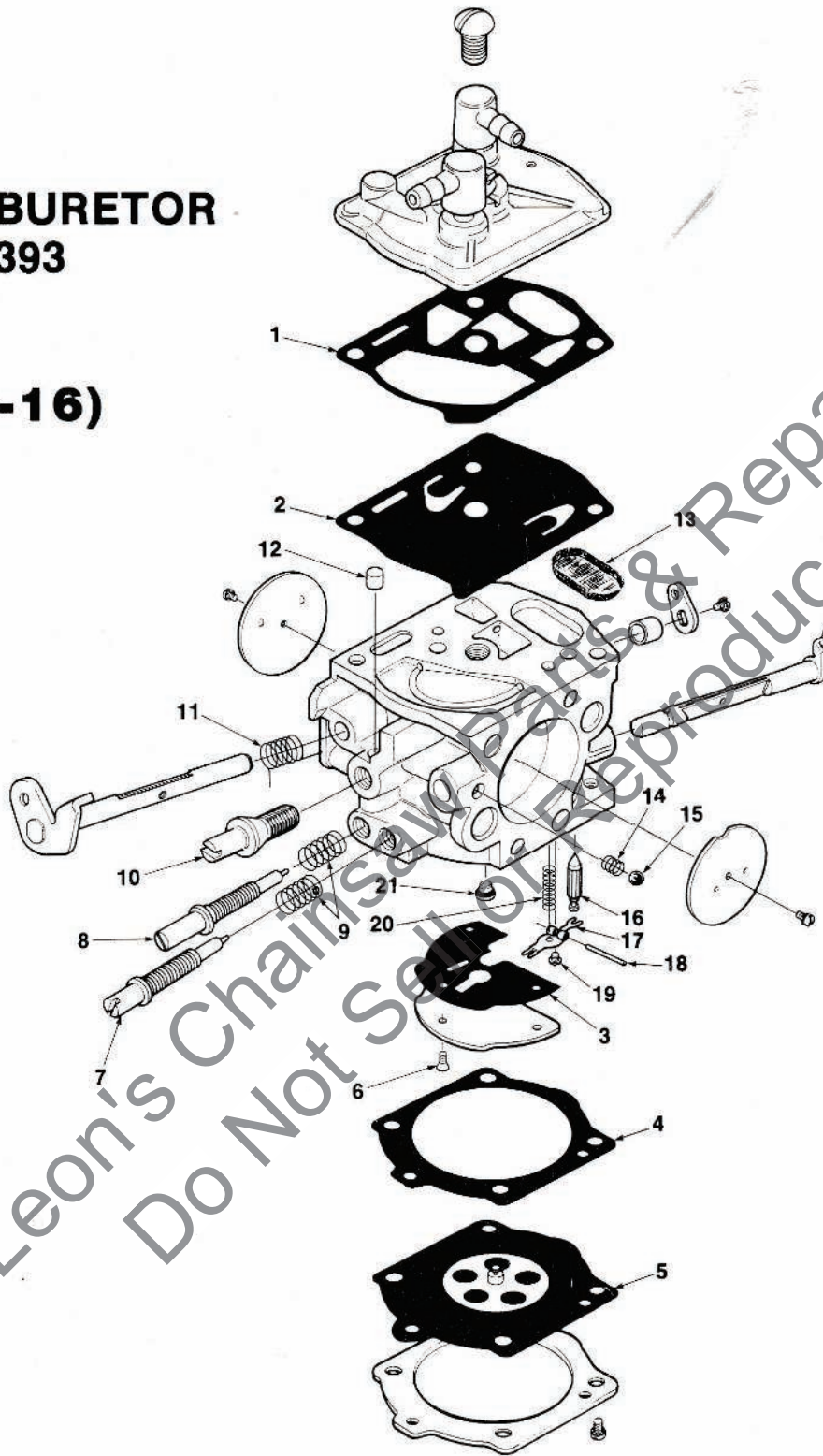
ALWAYS FURNISH MODEL AND SERIAL NUMBER WHEN ORDERING PARTS.

410 CHAIN SAW

FIGURE 5

**CARBURETOR
A-93393**

(WS-16)



Leon's Chainsaw Parts & Repair
Do Not Sell or Reproduce

REPAIR KIT (1-20)
NOZZLE- Check Valve (21)
GASKET/DIAPHRAGM KIT (1-5)
NEEDLE, INLET (16)

95893
95892
95894
64229

ALWAYS FURNISH MODEL AND SERIAL NUMBER WHEN ORDERING PARTS.

ACCESSORIES & TOOLS

WRENCH- Combination	A-24284
SEALASTIC	24823
TUBING- Rubber 10' (Fuel & Oil)	93112-99
TUBING- Rubber 10' (Pulse Line)	93157-99
PAINT- Red	23475
REEL 250' Rope #5	57084-1
PULLER- Rotor	A-17106-A
WRENCH- Spanner	A-17146
BIT- Driver Torx (Clutch Cover) 1/4 Shank	17115-01
BIT- Driver Torx (Clutch Cover) 5/16 Shank	17115-02
SHIM- Air Gap (Black)	24306
LOCTITE (242)	24388-B
BIT- Driver Torx (Isolator Pin) 1/4 Shank	24982-01
BIT- Driver Torx (Isolator Pin) 5/16 Shank	24982-02

HOMELITE DIVISION OF TEXTRON INC.

P.O. Box 7047
14401 Carowinds Boulevard
Charlotte, N.C. 28217

HOMELITE **TEXTRON**

Homelite Division of Textron Inc.