

HOMELITE®

- ⓐ PARTS LIST
- ⓑ LISTE DE PIÈCES
- Ⓓ TEILELISTE
- Ⓔ LISTA DE PIEZAS
- ⓐ ELENCO DELLE PARTI

CHAIN SAWS

180

UT10720

UT10721

XL

UT10694

UT10695

UT10722

SUPER 2

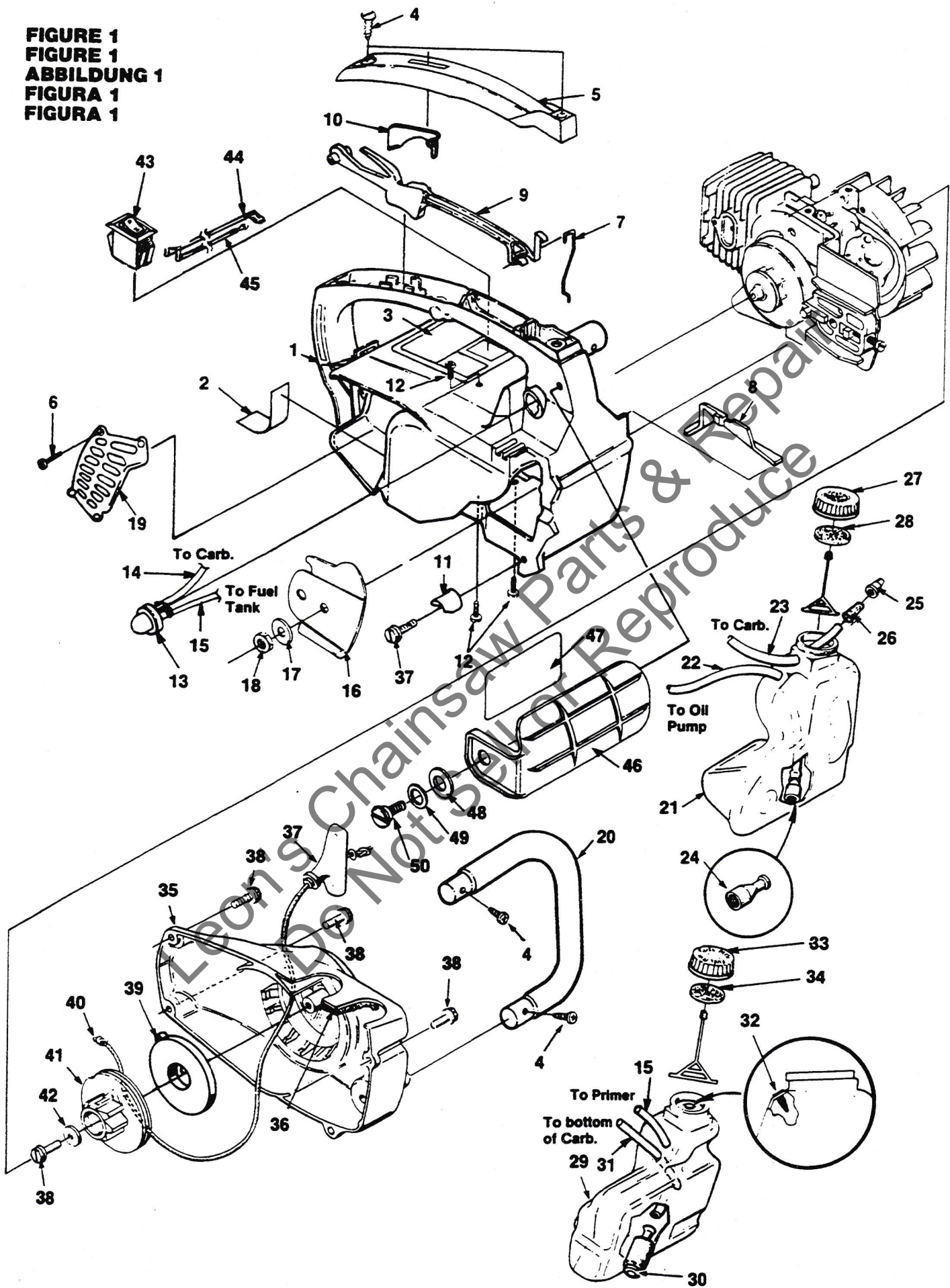
UT10696

UT10697



Printed in U.S.A.
Imprimé aux E.U.
Gebruckt in U.S.A.
Impreso en EE.UU
Stampato negli Stati Uniti
P/N 18663-1

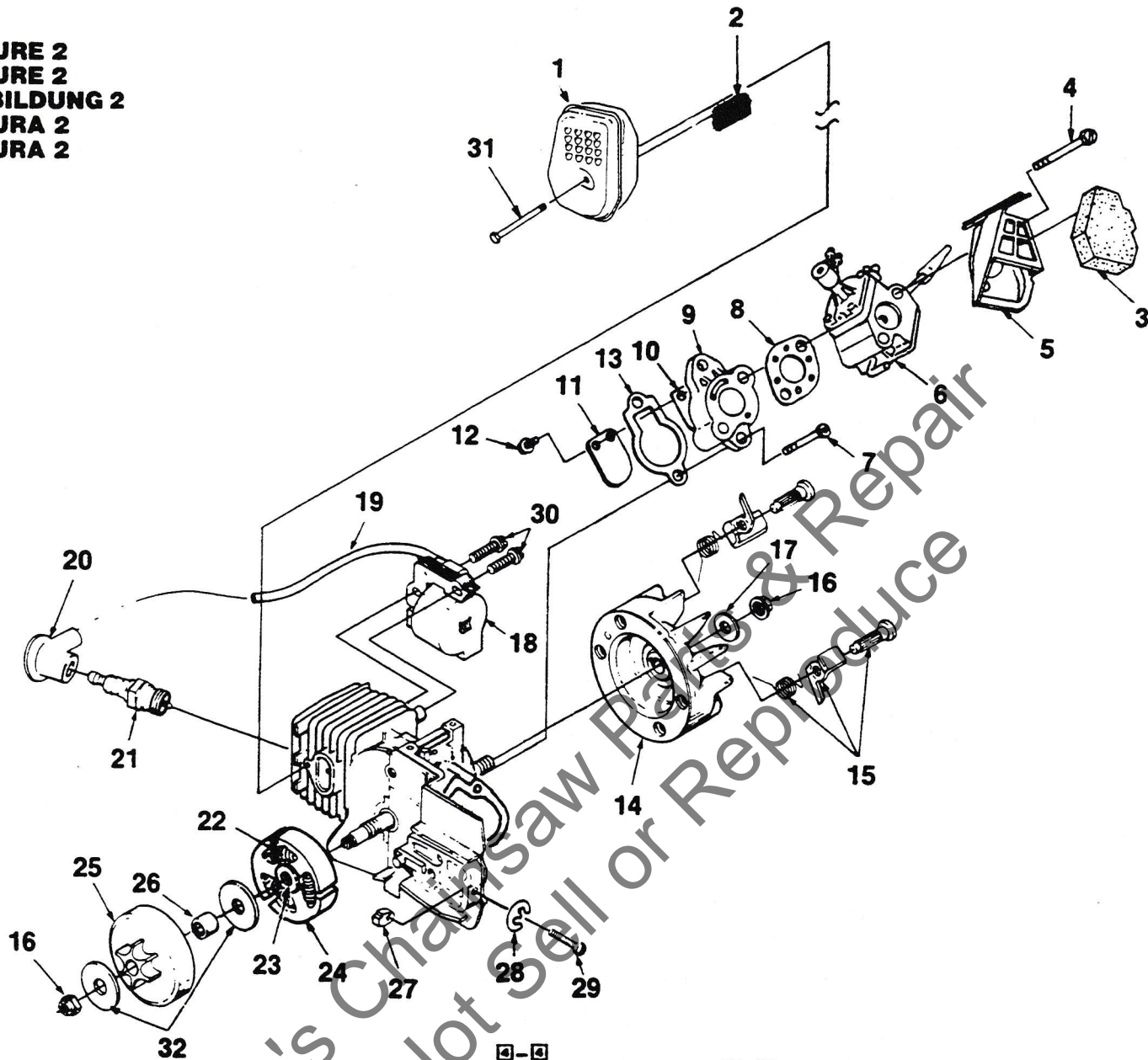
FIGURE 1
FIGURE 1
ABBILDUNG 1
FIGURA 1
FIGURA 1



No. No. Nr. No. Nº	Part Number No. de Pièce Best.—Nr. No. de Pieza Pezzo N°	Description	Qty. Qté Menge Cant. Qtà
1	● A-03058	HOUSING- Engine	1
2	02640	TAPE	1
3	02490	DECAL	1
	03271	DECAL	1
		(International Only)	
4	94065	SCREW- Pan, plastite (#10-16 x 3/4")	4
5	02495	COVER- Handle	1
6	82528	SCREW- Pan plastite (#6-3/8")	4
7	02501	ROD- Throttle	1
8	02481	COVER- Air filter	1
9	02492-A	TRIGGER	1
10	02493	LOCK- Trigger	1
11	95212	STOP- Chain	1
12	82538	SCREW- Torx, taptite (#10-24 x 3/4")	4
13	02487	PRIMER BULB	1
14	01439-12	TUBING- Inlet (3")	1
15	70310-30	TUBING- Return (7")	1
16	69360-A	PLATE- Guide bar	1
17	69309-A	WASHER- Flat	1
18	81065-2	NUT- Hex	1
19	02765	SHIELD- Muffler	1
20	02496	HANDLE BAR	1
21	● A-02763	TANK- Oil	1
22	70310-36	TUBING- (9")	1
23	70310-19	TUBING (4 3/4")	1
24	A-68593	FINDER- Oil	1
25	98819	VALVE- Check	1
26	01327	FITTING- Oil line	1
27	● A-97230-A	CAP- Oil	1
28	94494	GASKET- Cap	1
29	● A-02764	TANK- Fuel	1
30	49422	FILTER- Fuel	1
31	70310-22	LINE- Fuel (5 1/2")	1
32	98819	VALVE- Check	1
33	● A-97230-A	CAP- Fuel	1
34	94494	GASKET- Cap	1
35	● A-02562-B	STARTER HOUSING ASSY.	1
36	69443	FILTER	1
37	02264	GRIP- Starter	1
38	82563	SCREW- Torx, plastite (#10 x 3/4")	6
39	A-97908	SPRING & CONTAINER	1
40	97899-01	ROPE- Starter	1
41	97768-A	PULLEY- Starter	1
42	94062	WASHER- Retaining	1
43	02497	SWITCH	1
44	A-02482	LEAD- w/Flag Term.	1
45	A-02484	LEAD- w/Ring Term.	1
46	● A-70796-C	HANDGUARD KIT	1
47	02661	DECAL- Handguard	1
48	95694	WASHER- Curve spring	1
49	96102	WASHER- Flat	1
50	95714	SCREW- Shoulder	1

- Assemblies
- Ensemble
- Bausätze
- Complessi
- Conjunto

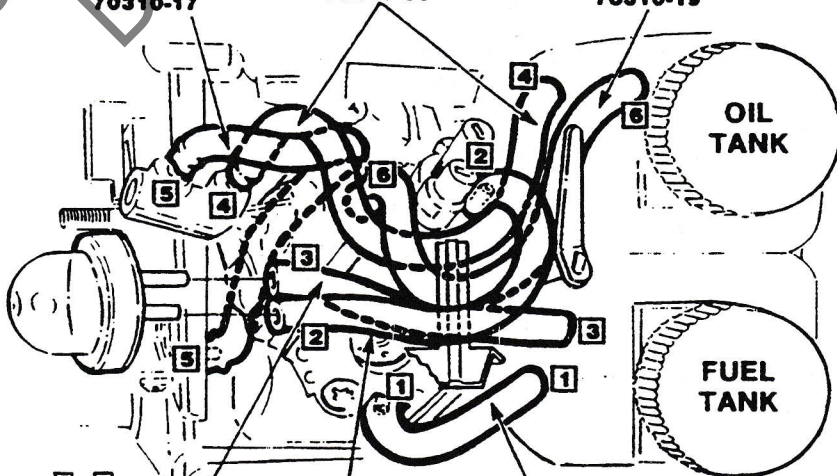
FIGURE 2
FIGURE 2
ABBILDUNG 2
FIGURA 2
FIGURA 2



8-8
 OUTLET OIL PUMP
 FITTING TO GLIDE
 BAR PAD FITTING.
 4 3/16" LONG
70310-17

4-4
 INLET OIL PUMP LINE
 FROM OIL PICK UP
 TO INSIDE PUMP
 FITTING. 9" OVERALL
 LENGTH WITH 4 5/8"
 OUT OF TANK.
70310-36

6-6
 PRESSURE PULSE LINE
 FROM CARBURETOR
 "PLASTIC" FITTING TO
 "DUCK BILL" IN OIL TANK
 4 3/4" LONG.
70310-19



3-3
 PRIMER RETURN
 LINE FROM LONG
 PRIMER FITTING TO
 UPPER FUEL TANK HOLE.
 7 1/2" LONG OVERALL.
 3 1/4" OUT OF TANK.
70310-30

2-2
 PRIMER INLET LINE
 FROM CARBURETOR FITTING
 UNDER ADJUSTING SCREWS
 TO SHORT PRIMER FITTING.
 3" LONG.
01439-12

1-1
 FUEL INLET LINE
 FROM PICK UP TO
 FITTING ON BOTTOM
 OF CARBURETOR.
 5 1/2" LONG OVERALL
 AND 1 3/4" OUT OF TANK.
70310-22

FUEL LINE CONNECTION

- 1-1** FUEL INLET
- 2-2** PRIMER INLET
- 3-3** PRIMER RETURN

OIL LINE CONNECTION

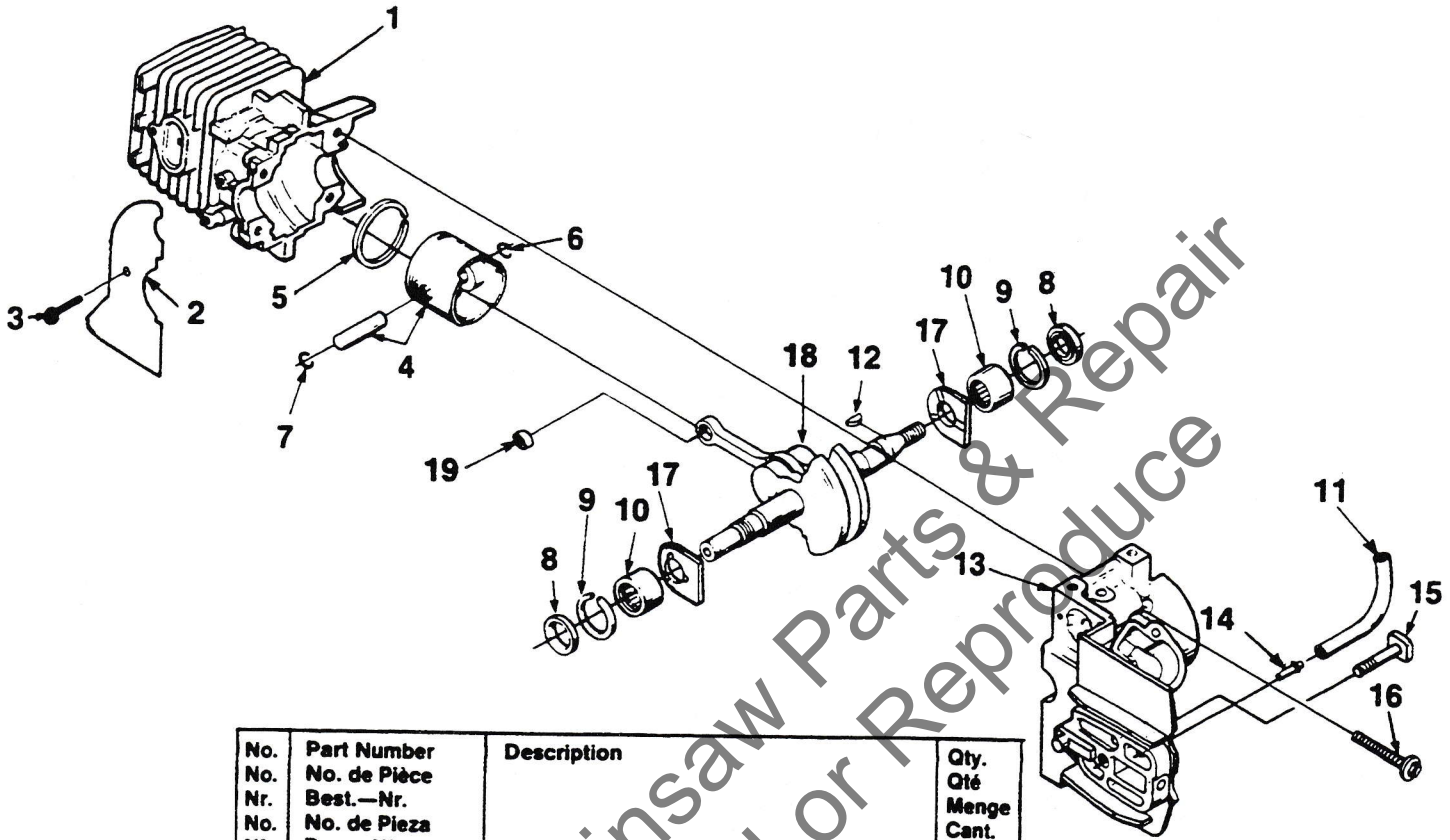
- 4-4** OIL PUMP INLET
- 5-5** OIL PUMP OUTLET
- 6-6** OIL TANK PRESSURE

**ROUTE LINES AS
 SHOWN - DO NOT KINK.**

No. No. Nr. No. N°	Part Number No. de Pièce Best.—Nr. No. de Pieza Pezzo N°	Description	Qty. Qté Menge Cant. Qtà
1	A-02459	MUFFLER	1
2	02458	SCREEN- Spark arrestor	1
3	02500	FILTER- Air	1
4	82578	SCREW- Shoulder plastite (#10-24 x 1 3/4")	2
5	02491-A	BOX- Air filter	1
6	A-02486-A	CARBURETOR & OIL PUMP ASSY.	1
7	82549-1	SCREW- Torx taptite, thd. forming (10-24 x 1")	2
8	02488	GASKET- Carburetor	1
9	• A-02499	HEAT DAM	1
10	95983	REED	1
11	03205	STOP- Reed	1
12	82498	SCREW- Hex Taptite (4-40 x 3/8")	2
13	02453	GASKET- Intake manifold	1
14	• A-95007	ROTOR & STARTER PAWL	1
15	A-70285-E	KIT- Starter pawl	1
16	81229	NUT- (5/16-24)	2
17	84065	WASHER- (5/16")	1
18	• 94711-CS	MODULE	1
19	69326	LEAD- Hi-Tension	1
20	A-33055	TERMINAL	1
21	96169-S	SPARK PLUG (Champion DJ7Y)	1
	79252	SPARK PLUG (Champion RDJ7Y) (International Only)	1
22	98066	SPRING- Clutch	3
23	79221	SPIDER- Clutch	1
24	79222-A	SHOE- Clutch	3
25	• A-95663-C	SPROCKET & DRUM	1
26	70277	BEARING	1
27	69254-2	PIN- Adjusting	1
28	• A-00440	SCREW & E-RING KIT	1
29	93574	E-RING	1
30	82540	SCREW- Machine hex sems	2
31	93460	SCREW- Machine hex sems (10-24 x 1 7/8")	1
32	95299	WASHER- Thrust	2

- Assemblies
- Ensemble
- Bausätze
- Complessi
- Conjunto

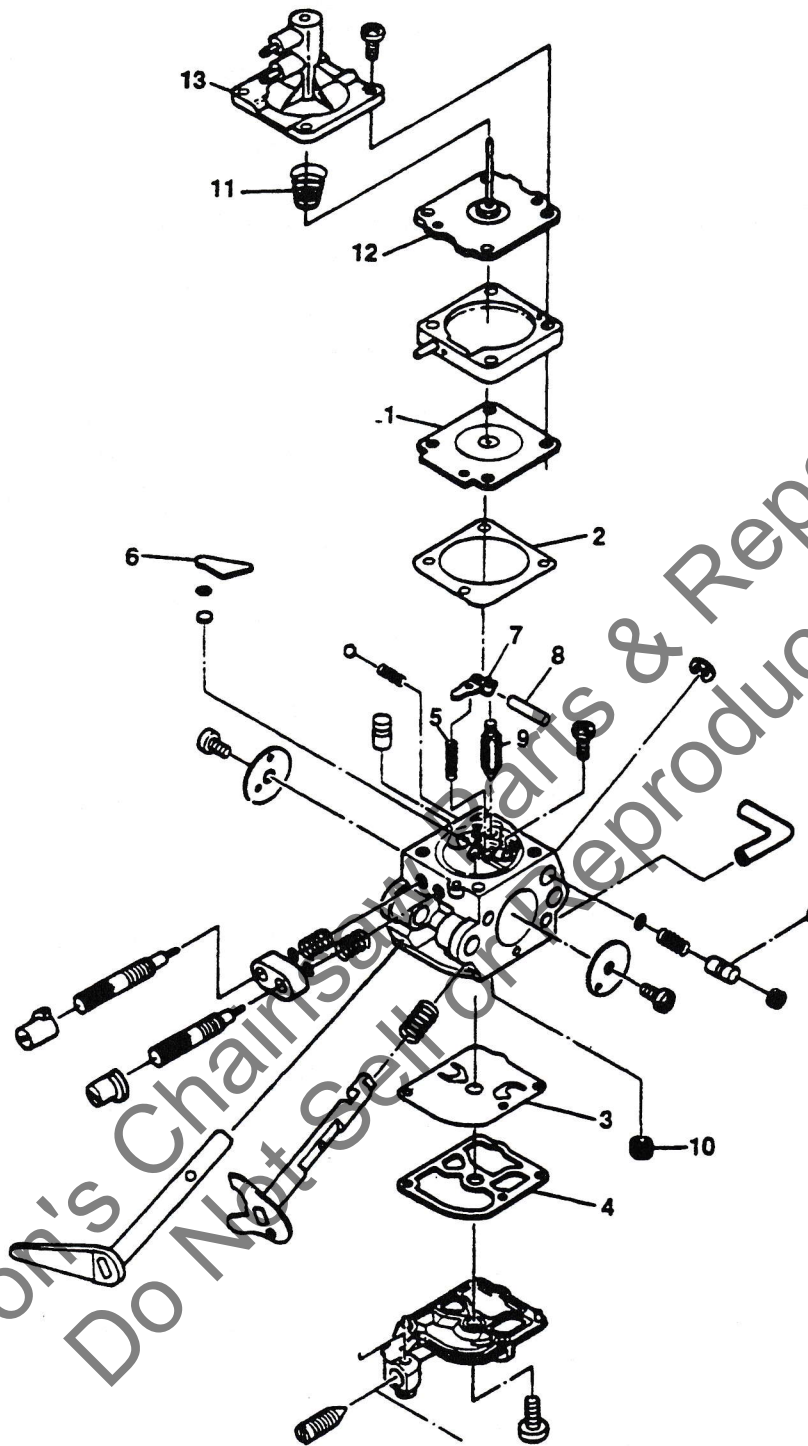
FIGURE 3
 FIGURE 3
 ABBILDUNG 3
 FIGURA 3
 FIGURA 3



No. No. Nr. No. No.	Part Number No. de Pièce Best.-Nr. No. de Pieza Pezzo N°	Description	Qty. Qté Menge Cant. Qta
1	02485-2 04328	CYLINDER (Super 2 Only) CYLINDER (XL Only)	1 1
2	02639	SHIELD- Sawdust	1
3	93932	SCREW- Tapping (#6-32 x 5/16")	1
4	● A-98967-A	PISTON & PIN ASSY. (Super 2 Only)	1
5	93165	RING- Piston	1
6	65261	RING- Retaining	1
7	98096	RING- Retaining	1
	● A-04330	PISTON & PIN ASSY. (XL & 180 Only)	1
	04329	RING- Piston (See #5)	1
	65261	RING- Retaining (See #6)	1
	98096	RING- Retaining (See #7)	1
8	94638	SEAL	2
9	69407	SPACER	2
10	12530	BEARING- Needle	2
11	70310-17	TUBING- Rubber (Oil Line)	2
12	69250	KEY	1
13	● A-03060-A	CRANKCASE ASSY.	1
14	94619	FITTING	1
15	69195	BOLT- Guide bar thd. forming	1
16	82567	SCREW- Torx pan hd. (10-24 x 1 1/8")	4
17	03962	WASHER- Thrust	2
18	● A-97611-B	CRANKSHAFT ASSY.	1
19	02035	BEARING	1
	81229	NUT- Lock (Not Shown)	1

- Assemblies
- Ensemble
- Bausätze
- Complessi
- Conjunto

**Carburetor
Carburateur
Vergaser
Carburador
Carburatore**



Repair Kit- 03172 (1-10)
Jeu de reparation
Reparatur- Satz
Juego de reparaci3n
Kit de Riparazione

Gasket/Diaphragm Kit- A-03904 (1-4)
Jue joint/diaphragme
Dichtung/Membrane - Satz
Conjunto diafragma/junta
Kit diaframma/guarnizione

Oil Pump Plunger Kit- 02773 (11-12)
Jeu de piston de pompe 2 huile
3lpumpenkolben- Bausatz
Conjunto del 3mbolo de la bomba de aceite
Kit pistone de la pompa dell'olio

Oil Pump Body- 02770 (13)
Corps de pompe 2 huile
3lpumpengeh2use
Cuerpo de la bomba de aceite
Corpo de la pompa dell'olio

**ACCESSORIES
ACCESSOIRES
ZUBEHÖR
ACCESSORIES
ACCESORIOS**

- ▶ **KIT- Repair (sprocket nose bar)** A-70239-E
 Jeu de réparation (Lame à nez à pignon)
 Reparatursatz (Kettenrad-Nasenspitze)
 Kit per riparazioni (denta punta lama)
 Juego de reparación (extremo barra rueda dentada)
- ▶ **FUEL LINE (10 ft. length)** 70310-99
 Conduite de carburant (3 m de long)
 Kraftstoffleitung (3 m Länge)
 Condotta d'alimentazione (3 m di lunghezza)
 Línea de combustible (10 pies de largo)
- ▶ **OIL LINE- (10 ft length)** 70309-99
 Conduite d'huile (3 m de long)
 Ölleitung (3 m Länge)
 Condotta dell'olio (3 m di lunghezza)
 Línea de aceite (10 pies de largo)
- ▶ **SAFE•T•TIP® (Standard)** DA-70776-B
 SAFE•T•TIP® (Standard)
 SAFE•T•TIP® (Standard)
 SAFE•T•TIP® (Standard)
 SAFE•T•TIP® (Standard)
- ▶ **GREASE- Multi Purpose (Sprocket bearing-PT guide bar)** 18453
 Graisse universelle (Palier de pignon-PT - lame-guide)
 Mehrzweck-Schmiermittel (Kettenradlager-PT-Führungsschiene)
 Grasso, multiuso Cuscinetto della ruota dentata - PT - barra di guida)
 Grasa de uso general (Cojinete de la rueda dentada - PT - barra guía)
- ▶ **CARRYING CASE** 94216-A
 Boitier de transport
 Tragekasten
 Custodia
 Maletin
- ▶ **STARTING ROPE (250 ft. Reel)** 98052-A
 Cordon de lanceur (75 m bobine)
 Starterseil (76 m Spule)
 Corda d'avviamento (bobina da 76 m)
 Cuerda de arranque (carrete de 76 m)

**TOOLS
OUTILS
WERKZEUGE
ATTREZZI
HERRAMIENTAS**

- ▶ **WRENCH (combination)** D-24814-A
 Clé combiné
 Schraubenschlüssel Kombination
 Chiave combinata
 Llave combinada
- ▶ **SILASTIC (crankcase sealing)** 24823
 Silastic (étanchéité du carter)
 Silastic (Kurbelgehäuse Dichtung)
 Silastic (sigillo di tenuta del carter)
 Silastic (sello del cárter)
- ▶ **PULLER- Magneto Rotor** A-24747-A
 Extracteur, rotor magnéto
 Abziehwerkzeug-Magnetrotor
 Rotore d'estrazione a magnete
 Extractor-rotor de magneto
- ▶ **IGNITION TEST SPARK PLUG** JA-31316-4
 Testeur d'allumage
 Testzündkerze für Zündprüfung
 Candela di collaudo
 Bujía para probar el encendido
- ▶ **SHIM (0.015" AIR GAP)** 22486
 Cale (écart de 0,38 mm)
 Distanzscheibe (0,38 mm Luftspalt)
 Spessore (spinterometro 0,38 mm)
 Suplemento (espacio de 0,38 mm)
- ▶ **T-25 TORX DRIVE BIT** 24982-01
 Foret torx T-25
 T-25 Torx-Antriebsbit
 Punta Torx Drive T-25
 Broca de empuje T-25 Torx
- ▶ **T-27 TORX DRIVE BIT** 18566-01
 Foret torx T-27
 T-27 Torx-Antriebsbit
 Punta Torx Drive T-27
 Broca de empuje T-27 Torx