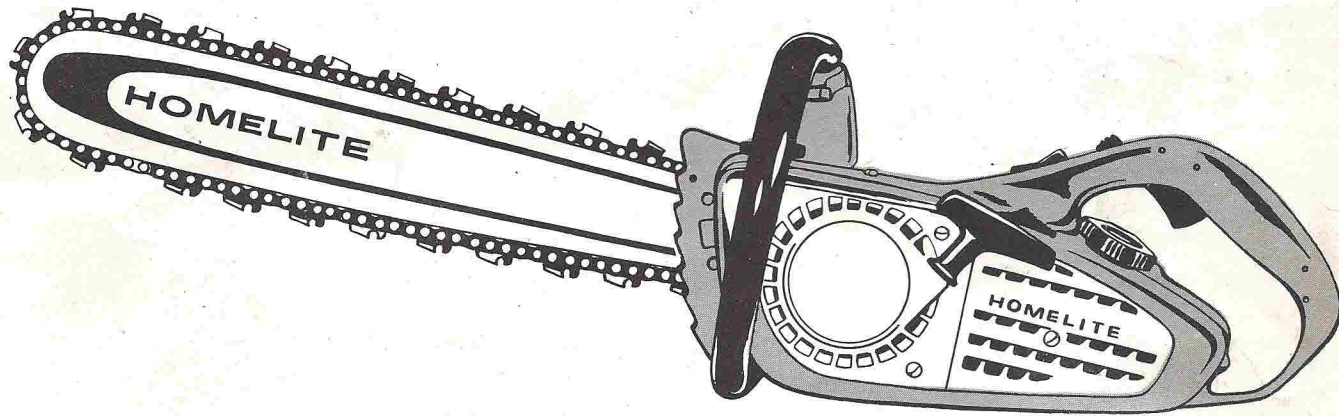


HOMELITE®



150 AUTOMATIC CHAIN SAW



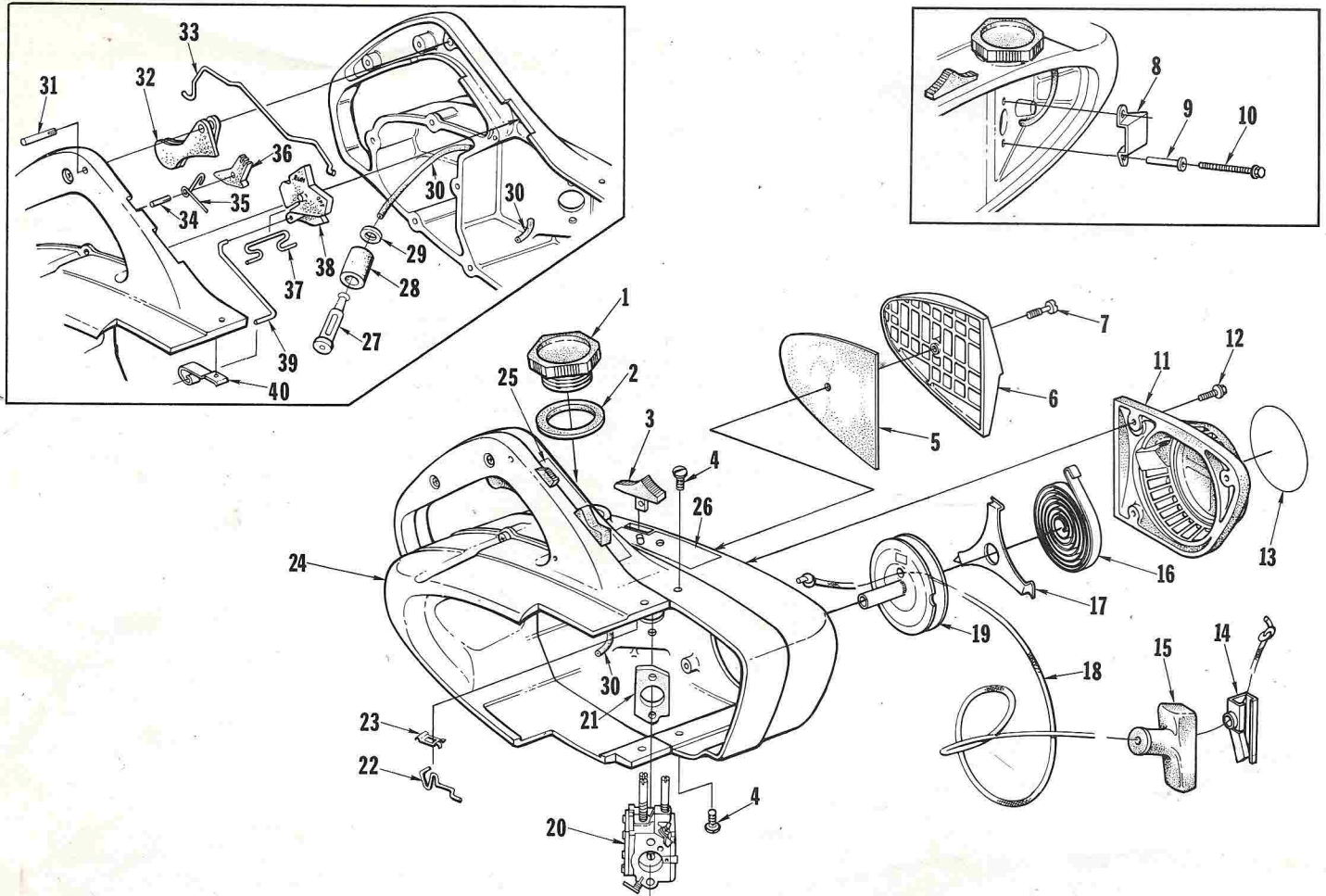
A **Textron**
DIVISION

PORT CHESTER, N.Y. U.S.A.

PRINTED IN U.S.A.

PRICE .35
PART NO. 24535

150 AUTOMATIC



ENGINE COVER

No.	Description	Part No.	Qty.	No.	Description	Part No.	Qty.
1	CAP-fuel filler Includes: VALVE-check (not shown)	A-65283-A	1	*21	SPACER-carburetor	68537	1
2	GASKET-fuel filler cap	58957	1	*22	ROD-choke	68552	1
* 3	BUTTON-choke	68551	1	*23	SPRING-choke	68584	1
* 4	SCREW-pan hd., 10-24 x 1/2	82216	4	*24	ENGINE COVER	A-68644	1
* 5	ELEMENT-air filter	68532	1		Includes:		
* 6	COVER-air filter	68531	1	*25	DECAL-"on-off"	68652	1
* 7	SCREW-cover retaining	68535	1	*26	DECAL-starting instructions	68654	1
* 8	DEFLECTOR-air	68534	1	*27	PICK-UP-fuel	A-63920	1
* 9	BUSHING-flanged	68560	2	28	Includes: FILTER-felt	64083-1	1
*10	SCREW-hex washer hd., 8-32 x 1-3/4	82217	2	29	WASHER	64182	1
*11	HOUSING-starter	A-68523	1	*30	LINE-fuel pick-up	68562	1
12	SCREW-hex washer hd., 8-32 x 1/2	80983	3	*31	PIN-trigger	68548	1
*13	DECAL-150 Auto	68621	1	*32	TRIGGER-throttle	68549	1
14	INSERT-rope retaining	68837	1	*33	LINKAGE-throttle	68550	1
15	GRIP-starter rope	64155-A	1	*34	PIN-grooved	68641	1
16	SPRING-rewind	65107	1	*35	SPRING-trigger latch	68626	1
*17	RETAINER-rewind spring	68612	1	*36	LATCH-trigger	68635	1
*18	ROPE-starter, #4 (48" in length)	68528	1	*37	SPRING-stop switch	68581	1
*19	PULLEY-starter	A-68645	1	*38	BUTTON-stop switch	68580	1
*20	CARBURETOR-Walbro HDC - 3	A-68536	1	*39	LINK-grounding switch	68576	1
				*40	CONTACT-grounding switch	68577	1

* Denotes new parts

