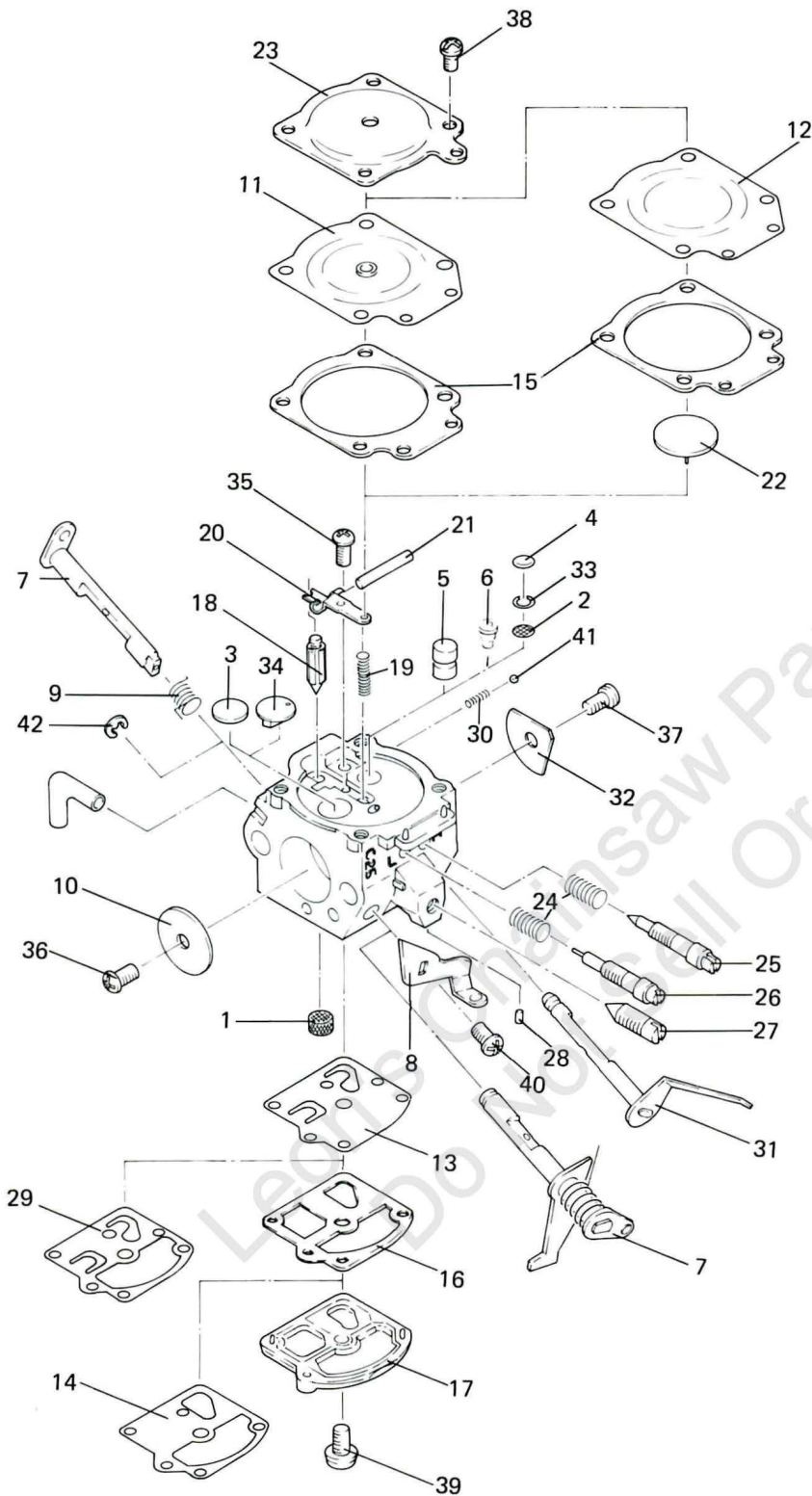


PARTS LIST

ZAMA														
Carburetor														

C2S TYPE

Leon's Chains & Parts & Repair
Do Not Sell



REF. NO.	PART NAME
1	Strainer
2	Strainer
3	Plug, Welch
4	Plug, Welch
5	Nozzle Ass'y, Check Valve
6	Nozzle
7	Shaft Ass'y, Throttle
8	Lever, Throttle Adjust
9	Spring, Throttle Return
10	Valve, Throttle
11	Diaphragm Ass'y, Metering
12	Diaphragm, Metering
13	Diaphragm, Pump
14	Diaphragm, Surge
15	Gasket, Metering Chamber
16	Gasket, Pump
17	Cover, Pump
18	Valve, Inlet Needle
19	Spring, Metering Lever
20	Lever, Metering
21	Pin
22	Disk
23	Cover, Metering Chamber
24	Spring, Adjust Screw
25	Screw, Main Mixture
26	Screw, Idle Mixture
27	Screw, Throttle Adjust
28	Piece, Friction
29	Retainer, Pump Diaphragm
30	Spring, Friction
31	Shaft Ass'y, Choke
32	Valve, Choke
33	Ring, Wire
34	Filling, Plastic
35	Screw (Pin)
36	Screw (Throttle Valve)
37	Screw (Choke Valve)
38	Screw (Metering Cover)
39	Screw (Cover)
40	Screw (Throttle Lever)
41	Ball, Steel
42	E-Ring

CARBURETOR	CUSTOMER	CUSTOMER NO.	EQUIPMENT	MODEL
19-01 C2S-H5 C2S-H9	McCULLOCH HOMELITE HOMELITE	95763 A-96481 A-97971	CHAIN SAW CHAIN SAW STR. TRIMMER	PM-610 XL, XL2, Super 2 ST-160A

REF. NO.	PART NAME	19-01	C2S-H5	C2S-H9
	Venturi	(17.2 mm)	(10.5 mm)	(7.2 mm)
	Repair Kit, Major ♦	K500026	K500013	K500032
	Repair Kit, Minor ★	K500042	K500053	K500055
	Gasket & Diaphragm Kit ●	♦K015024	♦K015013	♦K015029
1	★ Strainer	♦0004001	♦0004001	♦0004001
2	★ Strainer	-----	♦0004002	-----
3	★ Plug, Welch	♦0005002	♦0005002	♦0005002
4	★ Plug, Welch	-----	♦0005001	-----
5	Nozzle Ass'y, Check Valve	♦A007010	-----	-----
6	Nozzle	-----	♦0010002	-----
7	Shaft Ass'y, Throttle	A011008	A011015	A011024
8	Lever, Throttle Adjust	0048001	0012019	-----
9	Spring, Throttle Return	0013008	0013011	-----
10	Valve, Throttle	0014006	0014004	0014010
11	★ Diaphragm Ass'y, Metering	-----	-----	●A015005
12	★ Diaphragm, Metering	●0015009	●0015009	-----
13	★ Diaphragm, Pump	●0015010	●0015010	●0015010
14	★ Diaphragm, Surge	-----	●0015016	-----
15	★ Gasket, Metering Chamber	●0016005	●0016005	●0016005
16	★ Gasket, Pump	●0016010	●0016016	●0016016
17	Cover, Pump	0017007	0017013	0017013
18	★ Valve, Inlet Needle	♦0018001	♦0018001	♦0018001
19	★ Spring, Metering Lever	♦0019005	♦0019006	♦0019007
20	★ Lever, Metering	♦0020006	♦0020006	♦0020003
21	Pin	♦0021002	♦0021002	♦0021002
22	Disk	♦0025005	♦0025005	-----
23	Cover, Metering Chamber	0028006	0028006	0028004
24	Spring, Adjust Screw	0029002	♦0029002	♦0029001
25	Screw, Main Mixture	0030006	♦0030010	-----
26	Screw, Idle Mixture	0030006	♦0031011	♦0031002
27	Screw, Throttle Adjust	0035005	0035007	-----
28	Piece, Friction	0036001	0036001	-----
29	★ Retainer, Pump Diaphragm	●0037003	-----	-----
30	Spring, Friction	-----	0038001	0038001
31	Shaft Ass'y, Choke	-----	A041004	A041007
32	Valve, Choke	-----	0043004	0043004
33	Ring, Wire	-----	♦0050001	-----
34	★ Filling, Plastic	-----	-----	0055001
35	Screw (Pin)	♦14803006	♦14803006	♦14803006
36	Screw (Throttle Valve)	15603004	15603004	156030045
37	Screw (Choke Valve)	-----	156030045	156030045
38	Screw (Metering Cover)	16303008	16303008	17103007
39	Screw (Pump Cover)	17004010	17004010	17004010
40	Screw (Throttle Lever)	17103004	17103004	-----
41	Ball, Steel	-----	19290030	19290030
42	E-Ring	-----	-----	19500030

Leon's Chainsaw Parts & Repair
Do Not Sell Or Rproduce

**CARBURETOR
DIVISION**



SHINAGAWA DIECASTING CO., LTD.

Japan

U.S. Subsidiary

U.S.A. ZAMA, INC.

2909 Oregon Court, Suite C-4, Torrance, CA 90503

Phone: 213-320-6227

Telefax: 213-618-9845

ZAMA EUROPE

17 Rue Des Renoncules, 1341 Ceroux (Ottignie), Belgium.

Phone: 10-615615, Telefax: 10-615617