

Homelite®

PARTS LIST

MODELS

z625cd (UT20617) (UT20617-A)	s825cdv (UT20632) (UT20632-A)	d830sb (UT15108) (UT15108-1)
z625cdv (UT20631)	s825sdv (UT20633)	z825sd (UT20619-A)
d630cd (UT20622)	d830ca (UT20642)	st725cdr (UT20635-R)
z725ca (UT20643)	d830sba (UT15115)	st725cbr (UT15114-R)
z725cb (UT15107) (UT15107-1)	d830cb (UT15109) (UT15109-1)	z830sb (UT15106) (UT15106-1)
z725cdv (UT20623)	d830sd (UT20621)	st730sdr (UT20637-R)
d730cdv (UT20620)	z830sba (UT15116)	bc730sbr (UT15113-R)

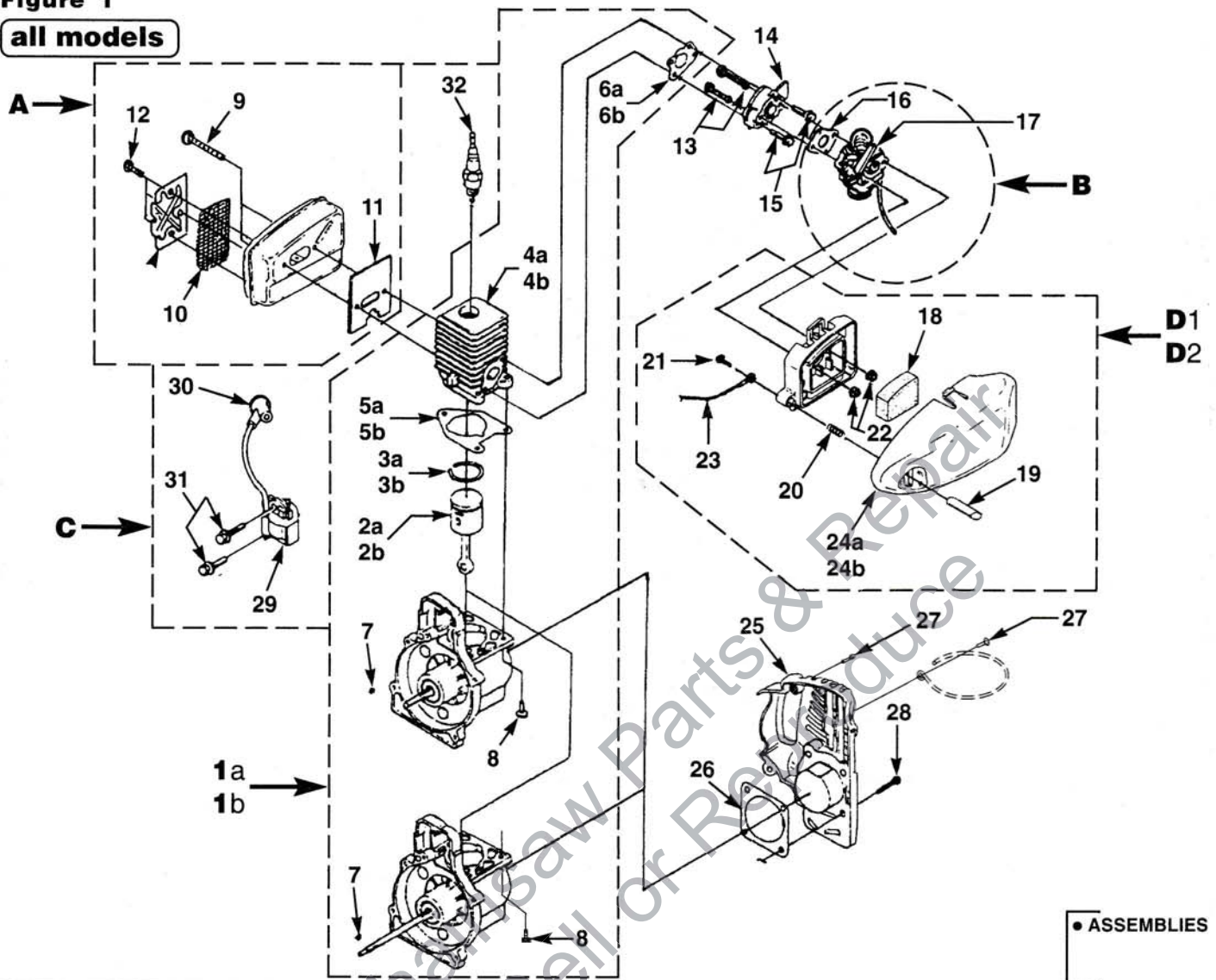
NOTE

THIS PARTS LIST COVERS ONLY UT NUMBERS SHOWN.
See Back Cover for Model Designation Explanation Chart.

Printed in U.S.A.
PART NO. 19486-A

Figure 1

all models

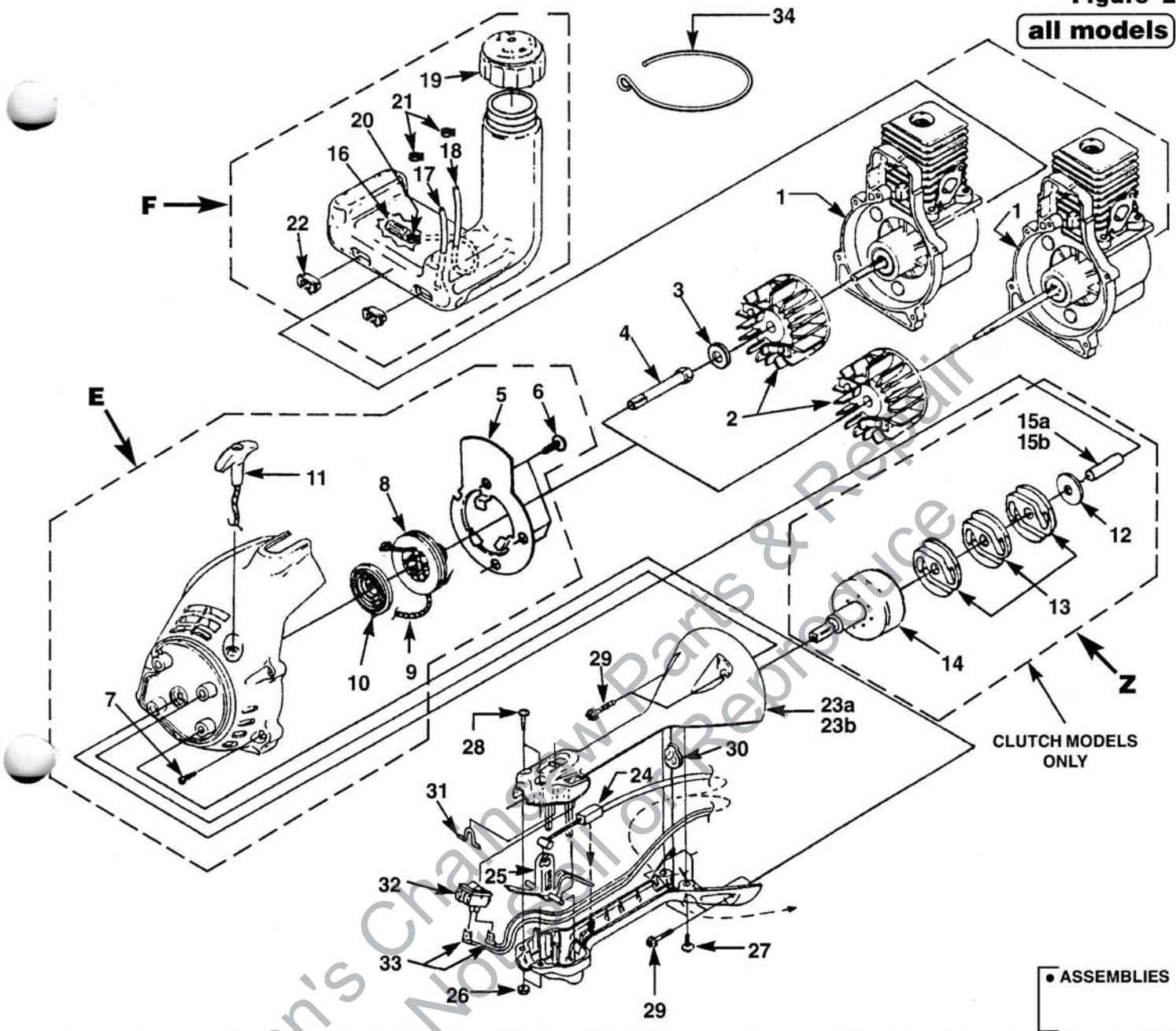


• ASSEMBLIES

NO.	PART NO.	DESCRIPTION	Qty.	NO.	PART NO.	DESCRIPTION	Qty.
1a	• A - 07134	REPOWER SHORT BLOCK (30CC <i>Non-Clutch</i> Models)	1	B	• A - 07139	CARBURETOR	1
1b	• A - 07135	REPOWER SHORT BLOCK (30CC <i>Clutch</i> Models)	1	16	98766 - 1	GASKET-Carburetor	1
		NOTE: BOTH SHORT BLOCKS Include the Following:		17	07377	LEVER-Choke Rod-(ZAMA)	1
2a	• A - 03599	30CC PISTON & ROD	1		07376	LEVER-Choke Rod-(WALBRO)	1
3a	03179	RING-Piston	2	D1	• A - 07140	AIR FILTER KIT W / PUSH- BUTTON STOP	1
4a	• A - 07146 - A	30CC CYLINDER KIT	1	18	D - 06615	FILTER-Air	1
5a	04388 - B	GASKET-Cylinder	1	19	06618	BUTTON-Switch	1
6a	06900 - A	GASKET-Heat Dam (Also includes #'s 11 & 26)	1	20	95020	SPRING-Compression	1
7	69250	KEY-Woodruff	1	21	82513	SCREW-Plastite (#6-19 X 1/2")	1
8	82569 - 1	SCREW-Thread Form. (10-24 X 3/4")	3	22	81208	NUT-Hex (10-24)	2
4b	• A - 07145	25CC CYLINDER KIT	1	23	• A - 07238	LEAD-Electrical	1
5b	04388 - B	GASKET-Cylinder	1	24a	06622	COVER-Air Filter	1
6b	06900 - A	GASKET-Heat Dam (Also includes #'s 11 & 26)	1	D2	• A - 07157	AIR FILTER KIT W / O PUSH- BUTTON STOP	1
2b	• A - 04258	25CC PISTON & ROD	1	18	D - 06615	FILTER-Air	1
3b	96935	RING-Piston	1	22	81208	NUT-Hex (10-24)	2
A	• A - 07142	MUFFLER KIT	1	24b	07051	COVER-Air Filter	1
9	82599	SCREW-Machine (#10-24 X 2")	2	25	• A - 07138	CRANKCASE COVER	1
10	06502	SCREEN-Spark	1	26	06443	GASKET-Crankcase Cover (Also inclu- ded with #4)	1
11	98786 - C	GASKET-Muffler (Also included with #4)	1	27	82563	SCREW-Plastite (#10 X 3/4")	3
12	80939	SCREW-Machine-Pan Slotted (8-32 X 3/4")	3	28	82539	SCREW-Taptite (10-24 X 7/8")	4
13	04474	SCREW-Machine (10-24 X 2 1/4")	2	C	• A - 04446	IGNITION KIT	1
14	98768	HEAT DAM	1	29	94711 - CS	MODULE-Ignition	1
15	82549 - 1	SCREW-Taptite (10-24 X 1")	2	30	• A - 33055	TERMINAL & COVER	1
				31	82540	SCREW-Taptite (8-32 X 1")	2
				32	96169 - S	SPARK PLUG	1

Figure 2

all models



CLUTCH MODELS ONLY

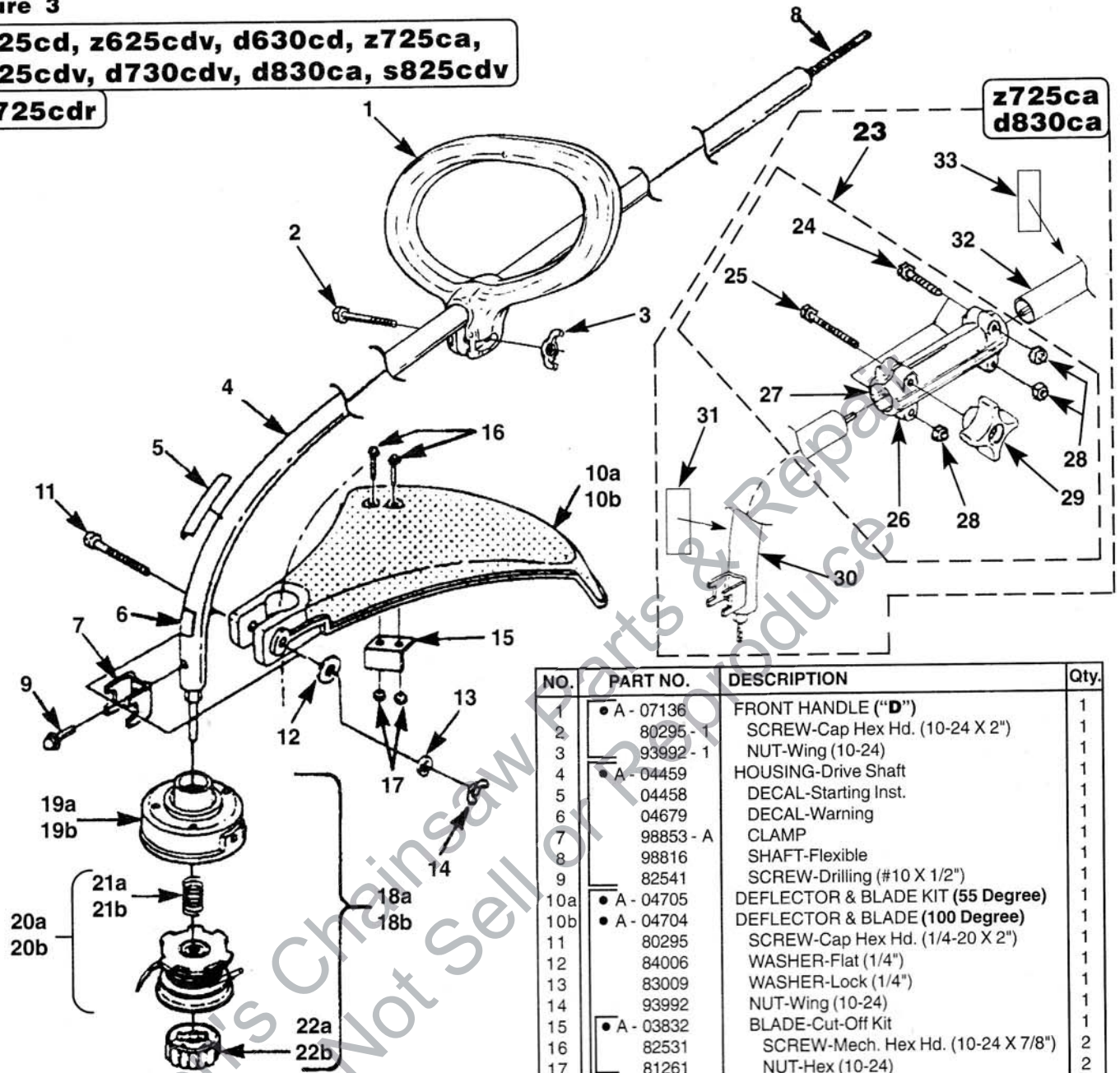
ASSEMBLIES

NO.	PART NO.	DESCRIPTION	Qty.
1	*	SHORT BLOCK (Ref. Pg. 2, Item 1a, 1b)	1
2	•A- 04158	ROTOR w / Starter Pawls	1
3	84065	WASHER-Flat (5/16)	1
4	98795 - A	CONNECTOR-Drive	1
E	•A- 07143	COMPLETE STARTER ASSEMBLY	1
5	06541 - A	PLATE-Baffle	1
6	82543	SCREW-Plastite (8-16 X 5/8")	3
7	82538	SCREW-Thread Form. (10-24 X 3/4")	4
8	98770 - A	PULLEY-Starter	1
9	97899 - 02	ROPE-Starter (42")	1
10	•A- 98773 - A	SPRING & CONTAINER	1
11	06598	GRIP-Starter	1
Z	•A- 04655	CLUTCH & DRUM KIT (z725cb, st725cbr, bc730sbr, d830cb, d830sb, d830sba, z830sb, z830sba)	1
12	• 98929 - A	WASHER-Flat	1
13	00242	CLUTCH	3
14	A- 03485 - A	CONNECTOR & DRUM	1
15a	03566 - 1	SPACER (30CC) 3 Shoe Clutch	1
15b	03566 - 2	SPACER (25CC) 2 Shoe Clutch	1

NO.	PART NO.	DESCRIPTION	Qty.
F	•A- 07141 - A	FUEL TANK COMPLETE	1
16	49422	FILTER-Fuel	1
17	94772 -22	TUBING-Rubber (5 1/2")	1
18	94772 -28	TUBING-Rubber (7")	1
19	DA - 06486	FUEL CAP	1
20	98268	CLAMP	1
21	93426	CLAMP	2
22	98792	BUMPER-Rubber	4
23a	•A- 07144	CONTROL HANDLE (W/O Switch)	1
24	06603 -A	CABLE-Throttle	1
25	06605	TRIGGER	1
26	81208	NUT-Hex (#10-24)	2
27	82537	SCREW-Plastite (#10-14 X 7/8")	2
28	82556	SCREW-Machine (#10-24 X 1 1/4")	2
29	82558	SCREW-Plastite (#10-14 X 1 1/8")	4
30	06620	STOP-Drive Shaft	1
31	06802	HOOK-Strap	1
23b	•A- 07158	CONTROL HANDLE (Ignition Switch Models) (Includes 24-31)	1
32	07920	SWITCH-Rocker	1
33	A - 07149	LEADS-Electrical	2
34	07183	SUPPORT-Wire	1

Figure 3

**z625cd, z625cdv, d630cd, z725ca,
z725cdv, d730cdv, d830ca, s825cdv
st725cdr**



**z725ca
d830ca**

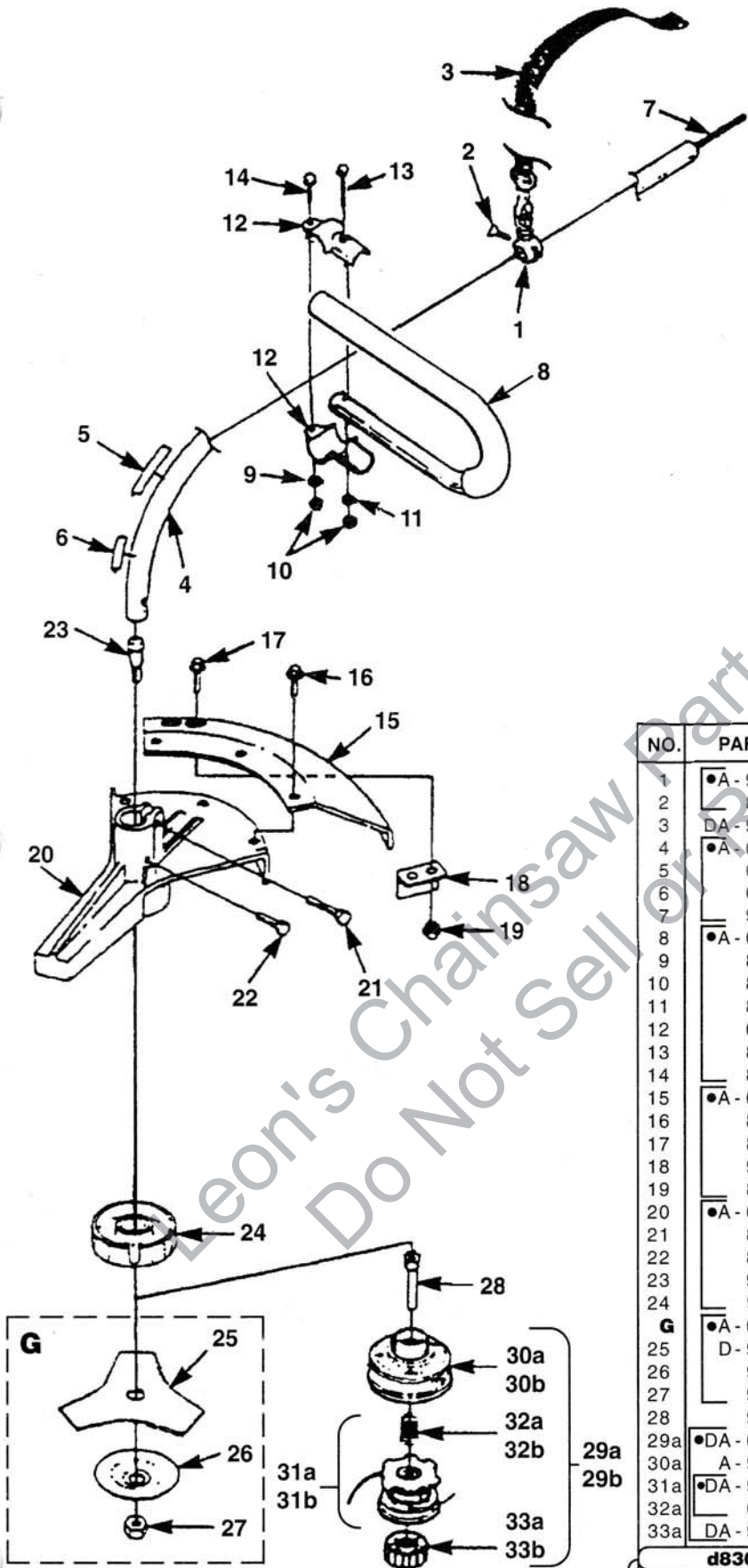
NO.	PART NO.	DESCRIPTION	Qty.
1	• A - 07136	FRONT HANDLE ("D")	1
2	80295 - 1	SCREW-Cap Hex Hd. (10-24 X 2")	1
3	93992 - 1	NUT-Wing (10-24)	1
4	• A - 04459	HOUSING-Drive Shaft	1
5	04458	DECAL-Starting Inst.	1
6	04679	DECAL-Warning	1
7	98853 - A	CLAMP	1
8	98816	SHAFT-Flexible	1
9	82541	SCREW-Drilling (#10 X 1/2")	1
10a	• A - 04705	DEFLECTOR & BLADE KIT (55 Degree)	1
10b	• A - 04704	DEFLECTOR & BLADE (100 Degree)	1
11	80295	SCREW-Cap Hex Hd. (1/4-20 X 2")	1
12	84006	WASHER-Flat (1/4")	1
13	83009	WASHER-Lock (1/4")	1
14	93992	NUT-Wing (10-24)	1
15	• A - 03832	BLADE-Cut-Off Kit	1
16	82531	SCREW-Mech. Hex Hd. (10-24 X 7/8")	2
17	81261	NUT-Hex (10-24)	2
18a	• DA - 03001 - A	STRINGHEAD-Complete (.080" Line)	1
19a	A - 98231 - A	HOUSING & EYELET (Dual Line)	1
20a	• DA - 98912 - E	SPOOL & STRING & SPRING(.080" Line)	1
21a	06713	SPRING-Compression	1
22a	DA - 98866 - A	RETAINER-Spool (R.H. Thread, Black)	1
d630cd, d730cdv, d830ca			
18b	• DA - 04591 - A	STRINGHEAD COMPLETE (.095" Line)	1
19b	A - 98231 - A	HOUSING & EYELET (Dual Line)	1
20b	• DA - 02598 - C	SPOOL & STRING & SPRING(.095" Line)	1
21b	06713	SPRING-Compression	1
22b	DA - 98866 - A	RETAINER-Spool (R.H. Thread, Black)	1
d830ca, z730ca			
23	• A - 07901	COUPLER ASSEMBLY	1
24	82278 - 1	BOLT-Hex Hd.	3
25	80295	SCREW-Cap Hex (1/4-20 x 2")	1
26	GM- 23611 - 1	SPLIT BOOM (L.H.)	1
27	GM- 23611 - 2	SPLIT BOOM (R.H.)	1
28	81267	NUT-Hex (1/4-20)	3
29	GM- 28520 - 4	KNOB	1
30	• A - 07903	DRIVE SHAFT HOUSING-(Lower)	1
31	04154	DECAL-Warning (Also includes #7 & #9)	1
32	• A - 07902	DRIVE SHAFT HOUSING-(Upper)	1
33	04458	DECAL-Start Instructions	1

• ASSEMBLIES

Figure 4

s725cb, d830cb

st725cbr



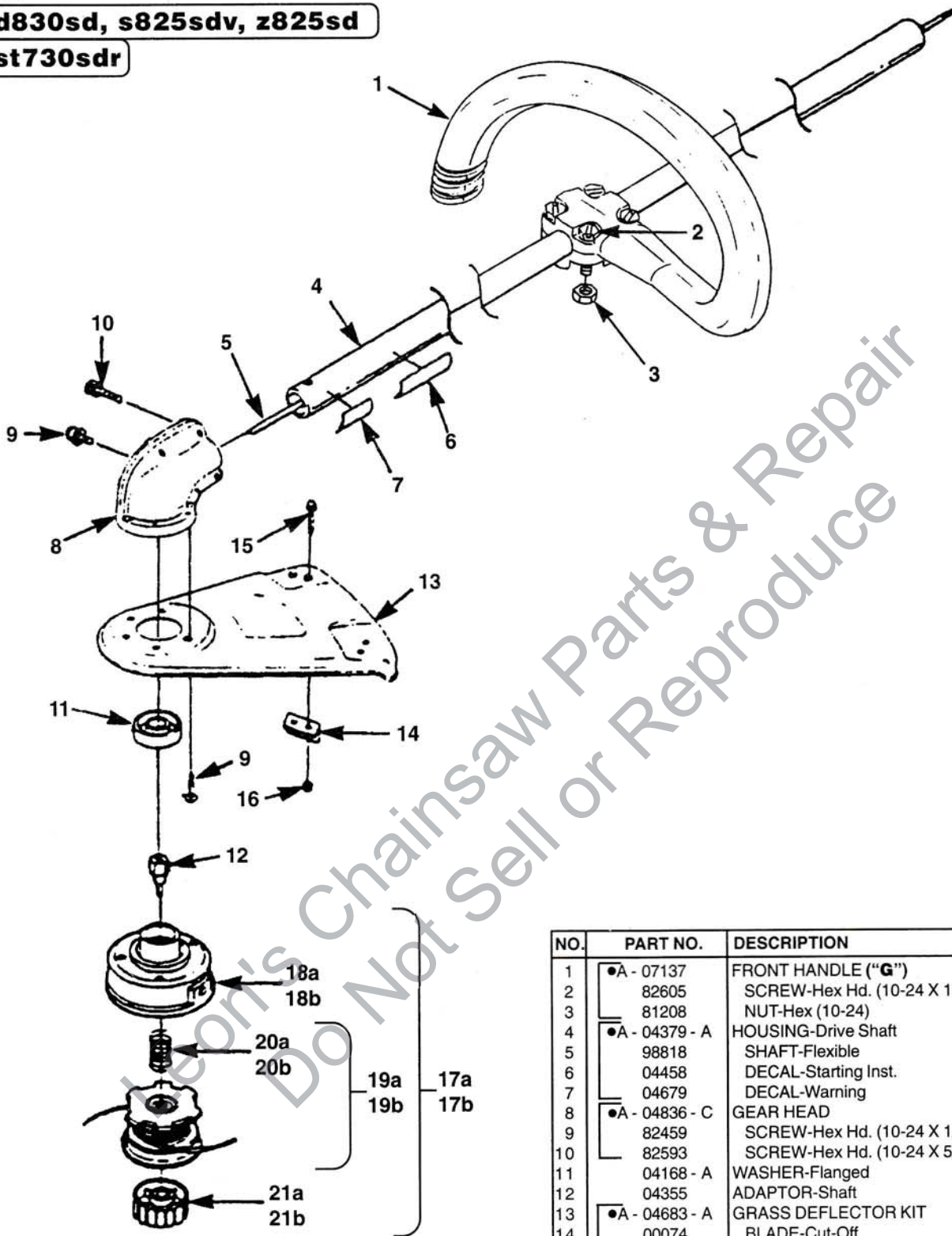
ASSEMBLIES

NO.	PART NO.	DESCRIPTION	Qty.
1	•A - 94442	BRACKET-Hanger	1
2	82260	SCREW-Thumb (10-24 X 1/2")	1
3	DA - 98703 - B	HARNES w / Connector	1
4	•A - 03287 - B	HOUSING-Drive Shaft (Black)	1
5	04458	DECAL-Starting Instructions	1
6	04493	DECAL-Warning	1
7	98818	SHAFT-Flexible	1
8	•A - 07159	HANDLE BAR ("J")	1
9	84124	WASHER-Flat	1
10	81267	NUT-Hex (1/4-20)	2
11	83061	WASHER-Lock (1/4")	2
12	00422 - 1	CLAMP-Handle Bar	2
13	88078	SCREW-Sems Hex Hd. (1/4-20 X 1")	1
14	88071	SCREW-Sems Hex Hd. (1/4-20 X 1/2")	1
15	•A - 04706	DEFLECTOR-Grass	1
16	80681 - 3	SCREW-Machine Hex Hd. (1/4-20 X 1/2")	3
17	80869	SCREW-Machine Hex Hd. (10-24 X 3/8")	2
18	98858	BLADE-Cut-Off	1
19	81208	NUT-Hex (10-24)	2
20	•A - 04457 - A	HOUSING-Lower Bearing	1
21	88078	SCREW-Sems Hex Hd. (1/4-20 X 1")	1
22	80869	SCREW-Machine Hex Hd. (10-24 X 3/8")	1
23	98834 - A	SHAFT-Spindle	1
24	98835 - 1B	WASHER-Flanged	1
	G	BLADE KIT	
25	•A - 03260 - A	BLADE-Tri-Arc (8")	1
26	D - 98717 - A	WASHER-Cupped	1
27	98837	NUT-Hex Locking (R.H.)	1
28	98849	CONNECTOR-Drive	1
29a	•DA - 03001 - A	STRINGHEAD-Complete (.080" Line)	1
30a	A - 98231 - A	HOUSING & EYELET (Dual Line)	1
31a	•DA - 98912 - E	SPOOL & STRING & SPRING(.080" Line)	1
32a	06713	SPRING-Compression	1
33a	DA - 98866 - A	RETAINER-Spool (R.H. Thread, Black)	1
	d830cb		
29b	•DA - 04591 - A	STRINGHEAD COMPLETE (.095" Line)	1
30b	A - 98231 - A	HOUSING & EYELET (Dual Line)	1
31b	•DA - 02598 - C	SPOOL & STRING & SPRING(.095" Line)	1
32b	06713	SPRING-Compression	1
33b	DA - 98866 - A	RETAINER-Spool (R.H. Thread, Black)	1

Figure 5

d830sd, s825sdv, z825sd

st730sdr



ASSEMBLIES

NO.	PART NO.	DESCRIPTION	Qty.
1	•A - 07137	FRONT HANDLE ("G")	1
2	82605	SCREW-Hex Hd. (10-24 X 1")	4
3	81208	NUT-Hex (10-24)	4
4	•A - 04379 - A	HOUSING-Drive Shaft	1
5	98818	SHAFT-Flexible	1
6	04458	DECAL-Starting Inst.	1
7	04679	DECAL-Warning	1
8	•A - 04836 - C	GEAR HEAD	1
9	82459	SCREW-Hex Hd. (10-24 X 1/2")	5
10	82593	SCREW-Hex Hd. (10-24 X 5/8")	2
11	04168 - A	WASHER-Flanged	1
12	04355	ADAPTOR-Shaft	1
13	•A - 04683 - A	GRASS DEFLECTOR KIT	1
14	00074	BLADE-Cut-Off	1
15	80869	SCREW-Machine Hex Hd. (10-24 X 3/8")	2
16	81208	NUT-Hex (10-24)	2
17a	•DA - 03001 - A	STRINGHEAD COMPLETE (.080" Line)	1
18a	A - 98231 - A	HOUSING & EYELET (Dual Line)	1
19a	•DA - 98912 - E	SPOOL & STRING & SPRING(.080" Line)	1
20a	06713	SPRING-Compression	1
21a	DA - 98866 - A	RETAINER-Spool (R.H. Thread, Black)	1
d830sd, st730sdr			
17b	•DA - 04591 - A	STRINGHEAD COMPLETE (.095" Line)	1
18b	A - 98231 - A	HOUSING & EYELET (Dual Line)	1
19b	•DA - 02598 - C	SPOOL & STRING & SPRING(.095" Line)	1
20b	06713	SPRING-Compression	1
21b	DA - 98866 - A	RETAINER-Spool (R.H. Thread, Black)	1

Figure 6

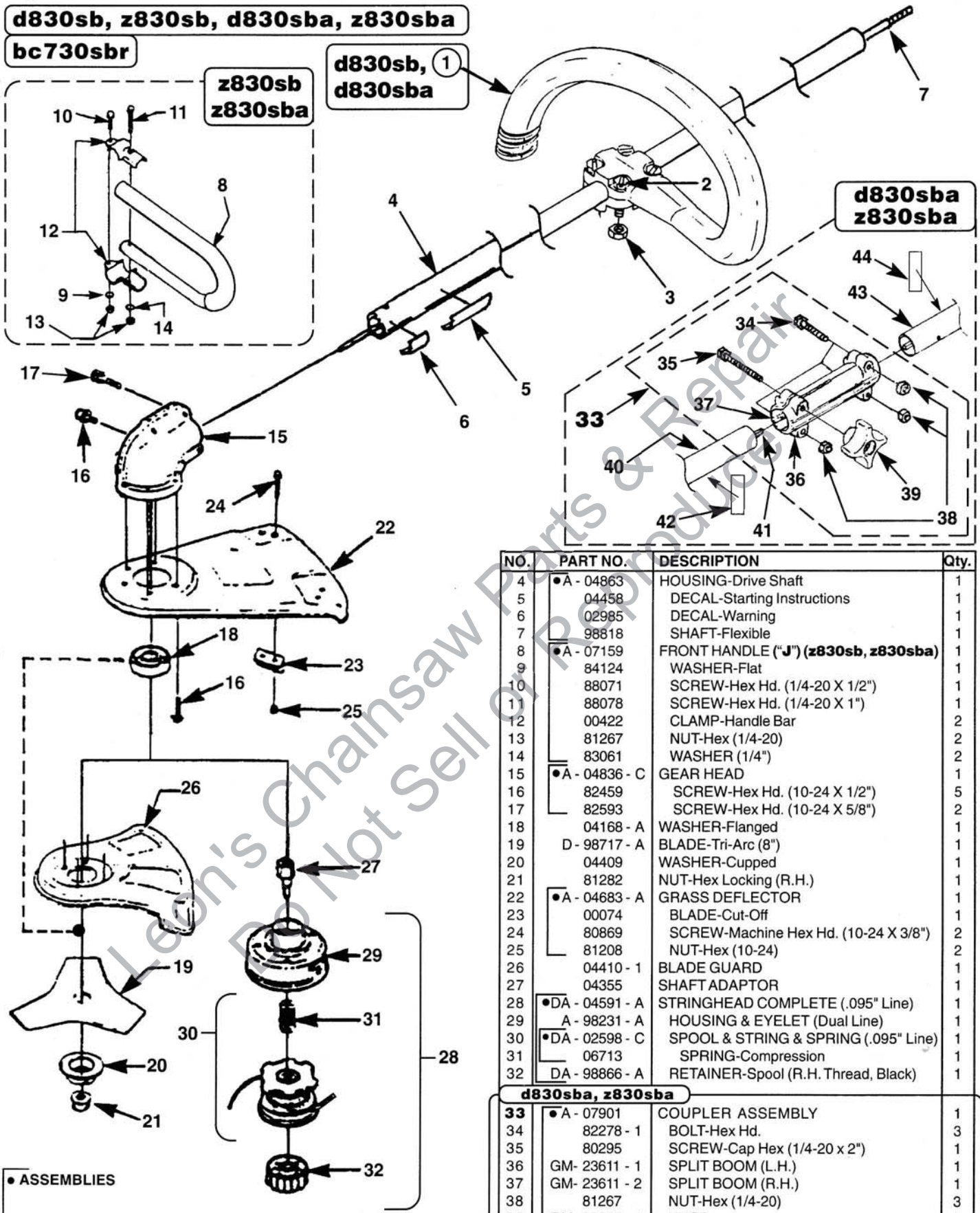
d830sb, z830sb, d830sba, z830sba

bc730sbr

**z830sb
z830sba**

**d830sb, ①
d830sba**

**d830sba
z830sba**



• ASSEMBLIES

NO.	PART NO.	DESCRIPTION	Qty.
1	• A - 07137	FRONT HANDLE("G")(d830sb, d830sba)	1
2	82605	SCREW-Hex Hd. (10-24 X 1")	4
3	81208	NUT-Hex (10-24)	4

NO.	PART NO.	DESCRIPTION	Qty.
4	• A - 04863	HOUSING-Drive Shaft	1
5	04458	DECAL-Starting Instructions	1
6	02985	DECAL-Warning	1
7	98818	SHAFT-Flexible	1
8	• A - 07159	FRONT HANDLE ("J") (z830sb, z830sba)	1
9	84124	WASHER-Flat	1
10	88071	SCREW-Hex Hd. (1/4-20 X 1/2")	1
11	88078	SCREW-Hex Hd. (1/4-20 X 1")	1
12	00422	CLAMP-Handle Bar	2
13	81267	NUT-Hex (1/4-20)	2
14	83061	WASHER (1/4")	2
15	• A - 04836 - C	GEAR HEAD	1
16	82459	SCREW-Hex Hd. (10-24 X 1/2")	5
17	82593	SCREW-Hex Hd. (10-24 X 5/8")	2
18	04168 - A	WASHER-Flanged	1
19	D - 98717 - A	BLADE-Tri-Arc (8")	1
20	04409	WASHER-Cupped	1
21	81282	NUT-Hex Locking (R.H.)	1
22	• A - 04683 - A	GRASS DEFLECTOR	1
23	00074	BLADE-Cut-Off	1
24	80869	SCREW-Machine Hex Hd. (10-24 X 3/8")	2
25	81208	NUT-Hex (10-24)	2
26	04410 - 1	BLADE GUARD	1
27	04355	SHAFT ADAPTOR	1
28	• DA - 04591 - A	STRINGHEAD COMPLETE (.095" Line)	1
29	A - 98231 - A	HOUSING & EYELET (Dual Line)	1
30	• DA - 02598 - C	SPOOL & STRING & SPRING (.095" Line)	1
31	06713	SPRING-Compression	1
32	DA - 98866 - A	RETAINER-Spool (R.H. Thread, Black)	1

d830sba, z830sba

33	• A - 07901	COUPLER ASSEMBLY	1
34	82278 - 1	BOLT-Hex Hd.	3
35	80295	SCREW-Cap Hex (1/4-20 x 2")	1
36	GM - 23611 - 1	SPLIT BOOM (L.H.)	1
37	GM - 23611 - 2	SPLIT BOOM (R.H.)	1
38	81267	NUT-Hex (1/4-20)	3
39	GM - 28520 - 4	KNOB	1
40	• A - 07904	DRIVE SHAFT HOUSING-(Lower)	1
41	A - 07579	DRIVE SHAFT	1
42	02985	DECAL-Warning	1
43	• A - 07902	DRIVE SHAFT HOUSING-(Upper)	1
44	04458	DECAL-Start Instructions	1

MODEL DESIGNATIONS FOR STRING TRIMMERS / BRUSHCUTTERS

1st Digit(s): m to y = Private Brand or Customized Product
 i = International / CEN Standards
 z = Mass Markets (ZR Series)
 d = Dealer Markets (DX Series)
 p = Commercial / Pro
 s t = String Trimmer (Reconditioned)
 bc = Brushcutter (Reconditioned)

2nd Digit: 5 = 15" Cut
 6 = 16" Cut
 7 = 17" Cut
 8 = 18" Cut

3rd / 4th Digits: 25 = 25cc
 30 = 30cc
 40 = 40cc

5th Digit: c = Curved Shaft
 s = Straight Shaft

6th Digit: c = Clutch
 d = Direct
 b = Blade Included / Clutch
 e = Electric Start / Clutch
 a = Attachment Capable (Split Boom / Clutch)

7th Digit(s): v = Value Pack (Shoulder Strap & Spool w / Line)
 (Optional) : a = Attachment Capable (Split Boom / Clutch)
 r = Reconditioned

z 7 25 c e

(No Optional Digit in this example)

CUSTOMER ASSISTANCE

FOR THE LOCATION OF YOUR NEAREST HOMELITE SERVICING DEALER
 IN THE UNITED STATES, PUERTO RICO, AND THE VIRGIN ISLANDS,

CALL: 1-800-242-4672

HEADQUARTERS

Homelite, Inc.
 P.O. BOX 7047
 CHARLOTTE, N.C. 28241

OVERSEAS OFFICES

NETHERLANDS

Homelite Netherlands B.V.
 A Deere & Company Affiliate
 Haverstraat 24
 2153 GB Nieuw Vennepe
 The Netherlands

FRANCE

Homelite Atlantic SARL
 Groupe Deere & Co.
 BP 7011
 95050 Cergy Pontoise Cedex
 France

AUSTRALIA

Homelite Pacific Ltd.
 A Deere & Company Affiliate
 ACN 008 683 538
 94 Rushdale Street
 P. O. Box 555 MDA
 Knoxfield Vic 3180
 Australia

CANADIAN OFFICES

Homelite Canada Limited

Homelite Canada Limitée

A Deere & Company Affiliate /
 Une Filiale de Deere & Company
 1850-55e/th Avenue
 Lachine, Québec, Canada H8T 3J5
 1-800-363-5715

UNIT 212-214, 590 Ebury Place
 New Westminster, B.C. V3M 6K7
 1-800-667-3128

20-D Voyager Court South
 Etobicoke, Ontario M9W 5M7
 1-800-465-2249

Homelite inc.

A Subsidiary of Deere & Company