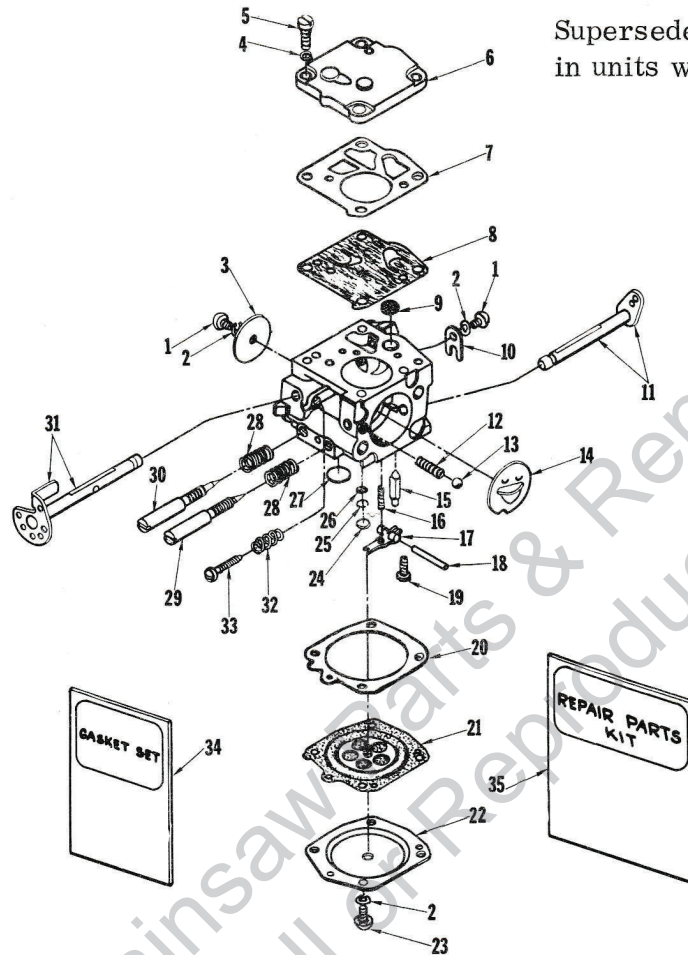


# CARBURETOR PARTS

**A-59535-B**

Supersedes #A-58767-A, #A-58767-B  
in units with governors only.



Model HS-5C

No.	Description	Part No.	Qty.
1	SCREW-4-40 x 3/16	† 80264	2
2	WASHER-#4	83008-1	6
3	THROTTLE SHUTTER	25050	1
4	WASHER- #6	83024	4
5	SCREW-6-32 x 3/8	80275	4
6	COVER-pump	58975	1
7	GASKET-fuel pump	58981	1
8	DIAPHRAGM-fuel pump	† 58980-R	1
9	SCREEN	† 58974	1
10	CLIP-throttle shaft	58982	1
11	CHOKE OIL & LEVER	58990	1
12	SPRING-choke friction	73264	1
13	BALL-choke friction	25527	1
14	SHUTTER-choke	58984	1
15	NEEDLE-inlet ❶	59717	1
16	SPRING-inlet tension	† 55759	1
17	LEVER-inlet control ❶	† 59716	1
18	PIN-fulcrum	† 58977	1

No.	Description	Part No.	Qty.
19	SCREW-4-40 x 5/16	† 58992	1
20	GASKET-diaphragm	58978	1
21	DIAPHRAGM-main	† 58988	1
22	COVER-diaphragm	58979	1
23	SCREW-4-40 x 1/4	80591	4
24	PLUG-Welch, 3/16	† 58994	1
25	RING-retaining	57819	1
26	SCREEN-channel	59500	1
27	PLUG-Welch, 11/32	† 58991	1
28	SPRING-adjusting screw	† 73075	2
29	NEEDLE-main adjusting	58986	1
30	NEEDLE-idle adjusting	58985	1
31	THROTTLE SHAFT & LEVER	58989	1
32	SPRING-idle speed	† 58973	1
33	SCREW-idle stop	† 58993	1
34	GASKET SET	† 67866	1
35	REPAIR KIT	67869	1

† Included in Repair Kit

❶ New type (slotted) needle and lever must be installed together when replacing original type.