

Homelite®

PARTS LIST

MODELS

st725cea

(UT20644R)

z725ce

(UT20616)

(UT20616-A)

z725cea

(UT20644)

z725se

(UT20618)

(UT20618-A)

s825sev

(UT20634)

(UT20634-A)

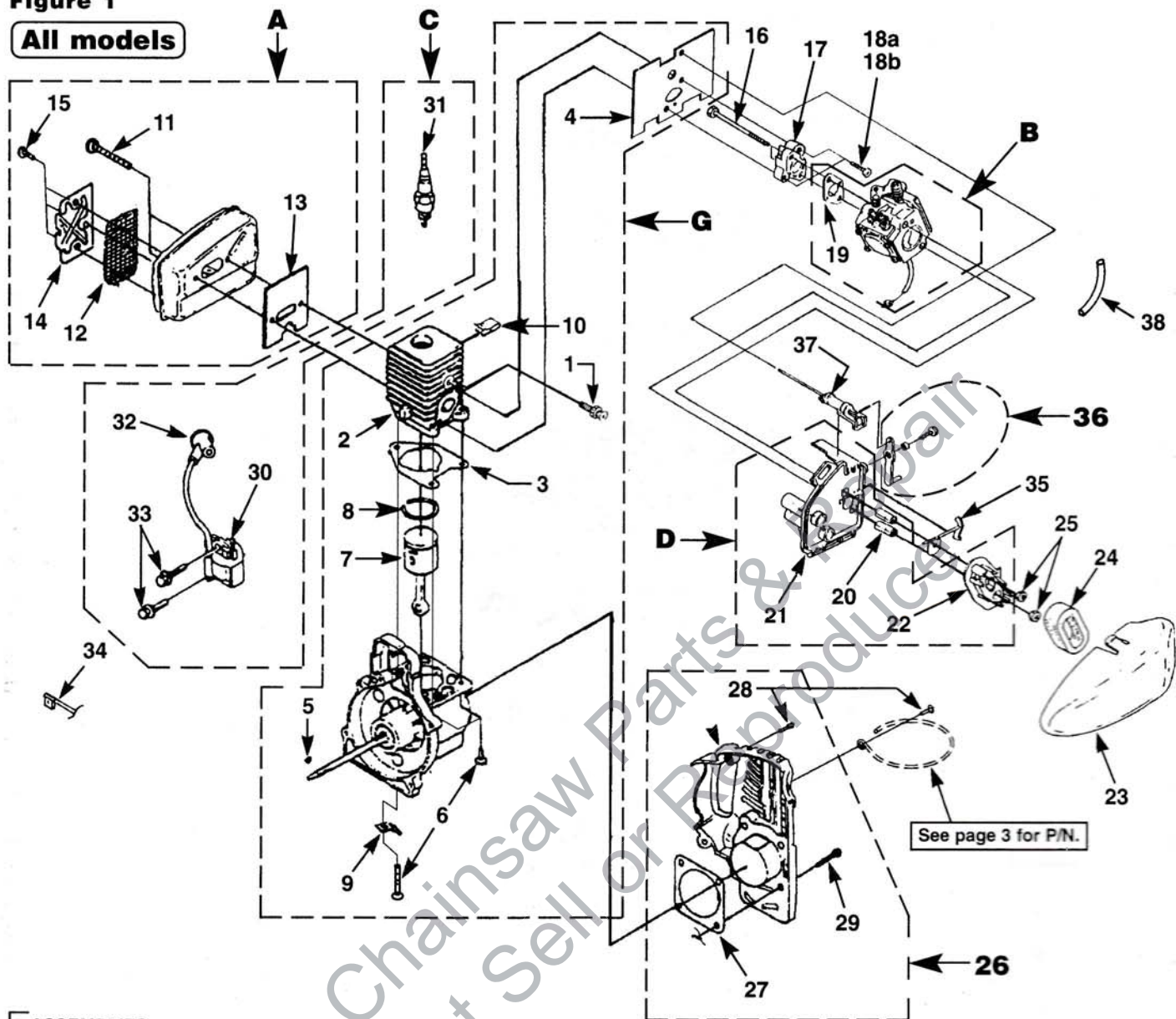
NOTE

THIS PARTS LIST COVERS ONLY UT NUMBERS SHOWN.
See Back Cover for Model Designation Explanation Chart.

Printed in U.S.A.
PART NO. 19485-A

Figure 1

All models



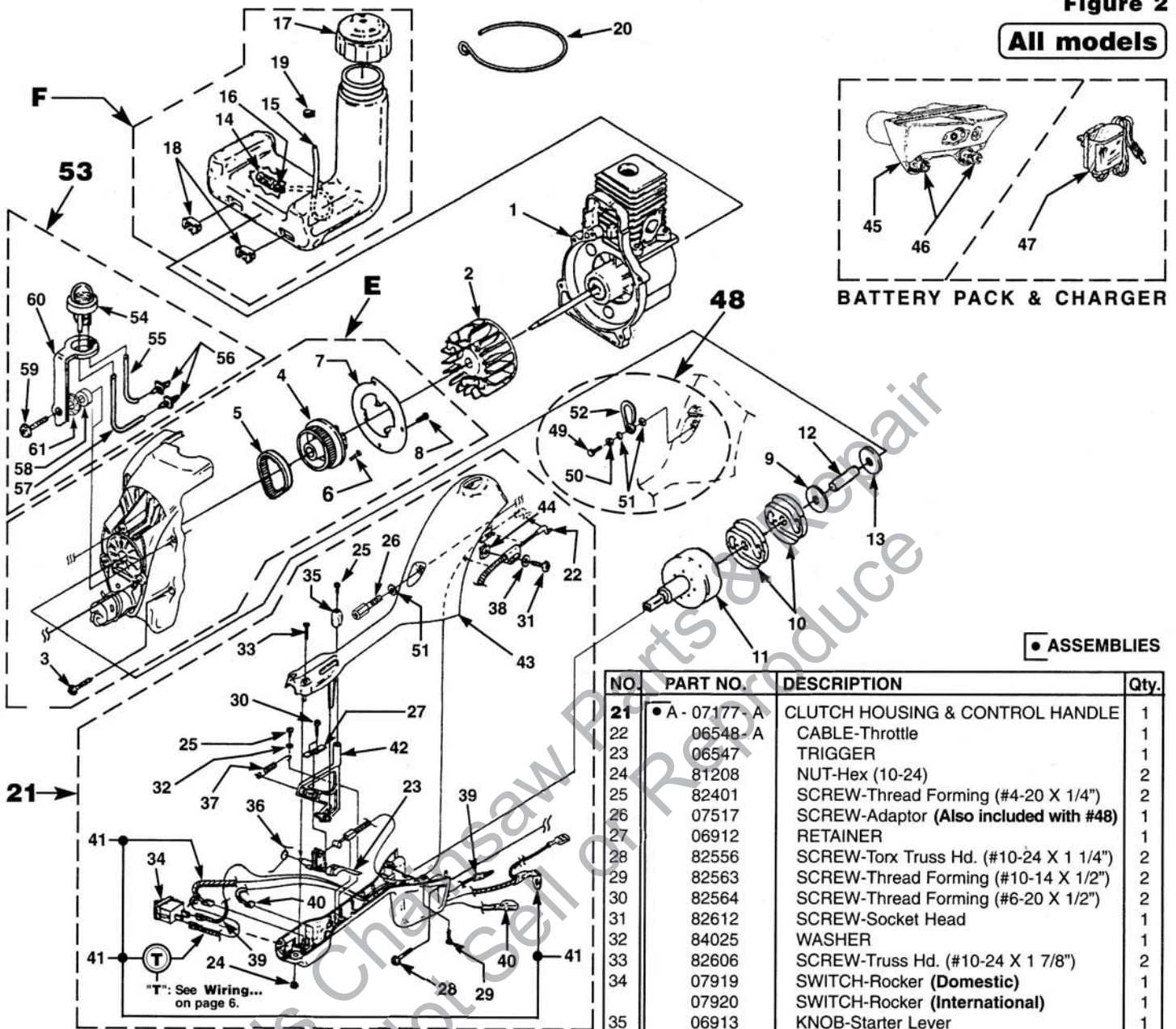
ASSEMBLIES

NO.	PART NO.	DESCRIPTION	Qty.
G	•A- 07166	SHORT BLOCK (25CC)	1
1	06488	COMPRESSION RELEASE VALVE	1
2	•A- 07167	25CC CYLINDER KIT	1
3	04388- B	GASKET-Cylinder	1
4	07615	GASKET-Heat Dam (Also includes #'s 13 & 27)	1
5	69250	KEY-Woodruff	1
6	82609- 1	SCREW-Thread Form. (10-24 X 7/8")	3
7	•A- 07314	25CC PISTON & ROD	1
8	96935	RING-Piston	1
9	07193	TERMINAL	1
10	06469	CLIP	1
A	•A- 07142	MUFFLER KIT	1
11	82599	SCREW-Machine (#10-24 X 2")	2
12	06502	SCREEN-Spark	1
13	98786- C	GASKET-Muffler (Also included with #2)	1
14	06501	COVER	1
15	82600	SCREW	3
16	06881	SCREW-Shoulder	2
17	06445	HEAT DAM	1
18a	82549- 1	SCREW-Taptite (10-24 X 1")	2
18b	82614	SCREW-Taptite (10-32 X 1") (UT-20616-A, UT-20618-A and UT-20634-A only)	2

NO.	PART NO.	DESCRIPTION	Qty.
B	•A- 07169	CARBURETOR KIT	1
19	98766- 1	GASKET-Carburetor	1
D	•A- 07171	AIR FILTER BODY	1
20	06720	SPACER	2
21	06484	BODY	1
22	A- 06480	BLADE RET. MAGNET	1
23	06483	COVER-Air Filter	1
24	D- 06485	FILTER-Air	1
25	81208	NUT-Hex (10-24)	2
26	•A- 07138	CRANKCASE COVER	1
27	06643- A	GASKET-Crankcase Cover (Also included with #2)	1
28	82563	SCREW-Plastite (#10 X 3/4")	3
29	82549	SCREW-Taptite (10-24 X 1")	4
C	•A- 07174	IGNITION KIT	1
30	06504- A	MODULE-Ignition	1
31	96169- S	SPARK PLUG	1
32	A- 33055	TERMINAL & COVER	1
33	82540	SCREW-Taptite (8-32 X 1")	2
34	A- 07186	LEAD- Electrical	1
35	A- 06477	BLADE & SHAFT ASSEMBLY	1
36	A- 07172	BELLCRANK	1
37	A- 07173	CHOKE ACTUATOR	1
38	94772- 12	TUBING-Rubber (3")	1

Figure 2

All models



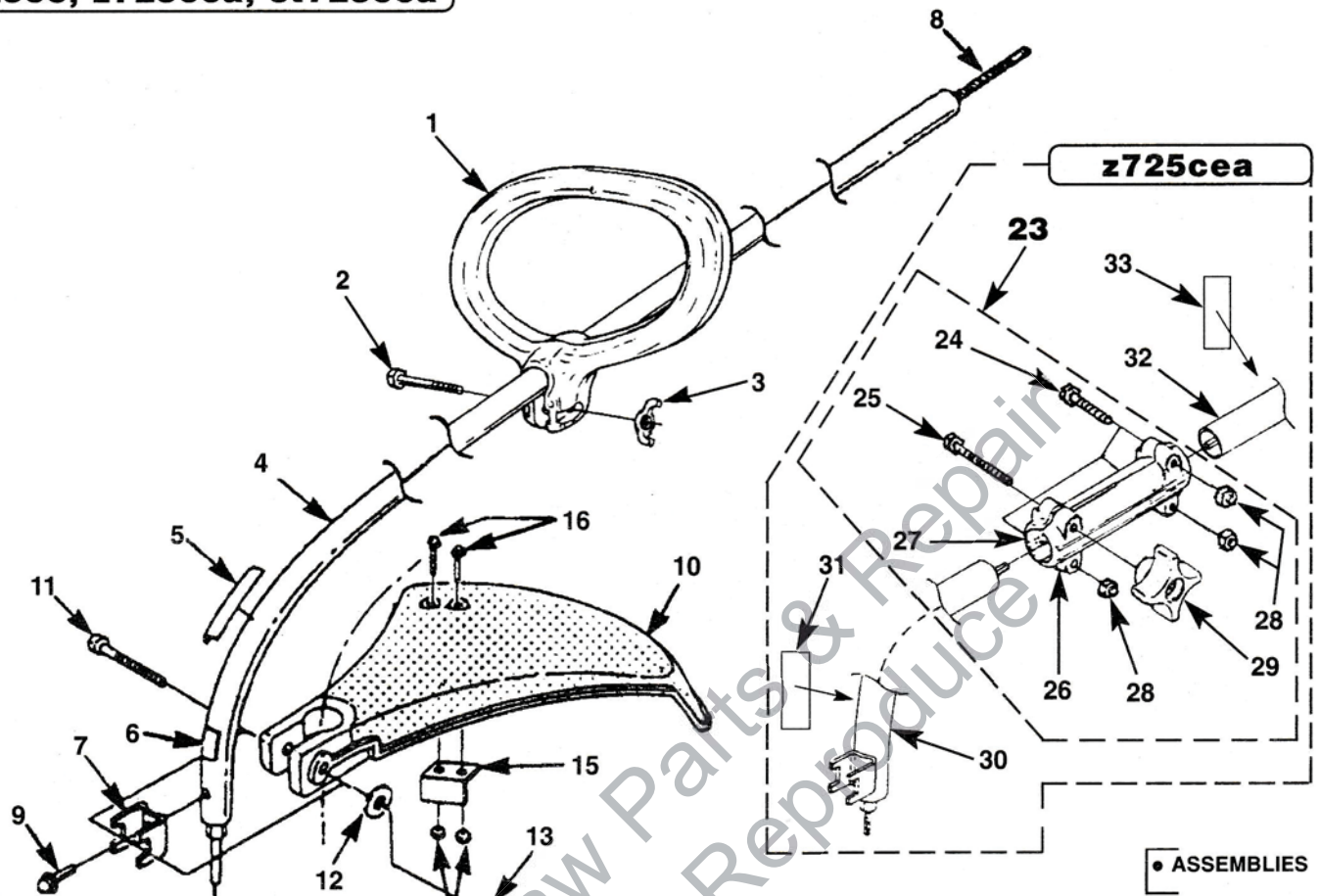
ASSEMBLIES

NO.	PART NO.	DESCRIPTION	Qty.
1	*	SHORT BLOCK (Ref. Pg. 2 Items 1-10)	1
2	A - 04158 - 1	ROTOR w / Starter Pawls	1
E	•A - 07168 - A	COMPLETE STARTER ASSEMBLY	1
3	82538	SCREW-Thread Form. (10-24 X 3/4")	4
4	06533	PULLEY-Starter	1
5	06534	BELT-Starter	1
6	82540	SCREW- Thread Forming (8-32 X 1")	3
7	06723	BAFFLE	1
8	07183	SCREW-Plastite (8-16 1/2")	1
9	98929 - A	WASHER-Flat	1
10	00242	CLUTCH	2
11	A - 03485 - A	CONNECTOR & DRUM	1
12	03566 - 2A	SPACER	1
13	95479 - A	WASHER	1
F	•A - 07170 - A	FUEL TANK COMPLETE	1
14	49422	FILTER-Fuel	1
15	94772 - 20	TUBING-Rubber (5")	1
16	98268	CLAMP-Wire	1
17	DA - 06486	FUEL CAP	1
18	98792	BUMPER-Rubber	4
19	02067	FITTING-In Line Fuel	1
20	07183	SUPPORT WIRE	1

NO.	PART NO.	DESCRIPTION	Qty.
21	•A - 07177 - A	CLUTCH HOUSING & CONTROL HANDLE	1
22	06548 - A	CABLE-Throttle	1
23	06547	TRIGGER	1
24	81208	NUT-Hex (10-24)	2
25	82401	SCREW-Thread Forming (#4-20 X 1/4")	2
26	07517	SCREW-Adaptor (Also included with #48)	1
27	06912	RETAINER	1
28	82556	SCREW-Torx Truss Hd. (#10-24 X 1 1/4")	2
29	82563	SCREW-Thread Forming (#10-14 X 1/2")	2
30	82564	SCREW-Thread Forming (#6-20 X 1/2")	2
31	82612	SCREW-Socket Head	1
32	84025	WASHER	1
33	82606	SCREW-Truss Hd. (#10-24 X 1 7/8")	2
34	07919	SWITCH-Rocker (Domestic)	1
	07920	SWITCH-Rocker (International)	1
35	06913	KNOB-Starter Lever	1
36	07071	SPRING-Torsion	1
37	07075 - A	SPRING-Extension	1
38	84103 - 1	WASHER-Flat	1
39	A - 07190 - A	LEAD-Electrical	1
40	A - 06725	LEAD-Electrical	1
41	A - 06724 - B	LEAD-Electrical	1
42	A - 07020 - A	STARTER LEVER w / BAR	1
43	06538 - 1	CLUTCH HOUSING (Top)	1
44	81289	NUT-Tinnerman	1
45	•DA - 06965	BATTERY PACK	1
46	A - 06971	KNOB-Battery Pack	2
47	D - 06550	CHARGER-Battery Pack	1
48	•A - 07560	HANGER KIT (Also includes #26)	1
49	80648	SCREW	1
50	83046	WASHER-Lock	1
51	84003	WASHER	3
52	07516	HANGER	1
53	•A - 07927	START ASSIST BUTTON KIT	1
54	07916	BUTTON-Start Assist	1
55	01439 - 08	LINE-Fuel (2.0") (5,0cm)	1
56	02067	FITTING-Fuel Line	2
57	01439 - 10	LINE-Fuel (2.5") (6,5cm)	1
58	07915	SPACER	1
59	82549	SCREW- (10-24 x 1.00")	1
60	07913	BRACKET	1
61	08218	WASHER-External Lock	1

Figure 3

z725ce, z725cea, st725cea



• ASSEMBLIES

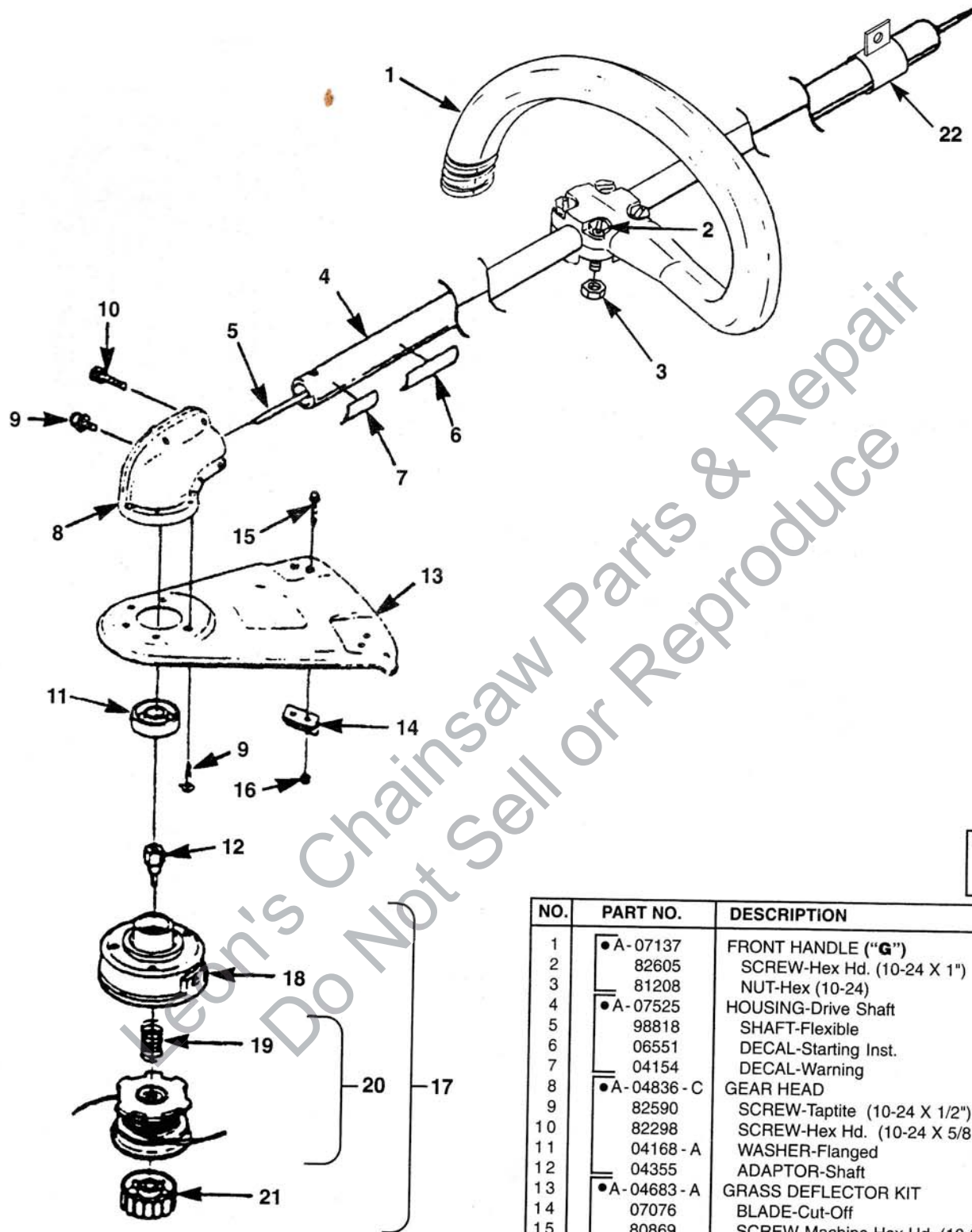
NO.	PART NO.	DESCRIPTION	Qty.
1	• A-07136	FRONT HANDLE ("D")	1
2	80295 - 1	SCREW-Cap Hex Hd. (10-24 X 2")	1
3	93992 - 1	NUT-Wing (10-24)	1
4	• A-07524	HOUSING-Drive Shaft	1
5	06551	DECAL-Starting Inst.	1
6	04154	DECAL-Warning	1
7	98853 - A	CLAMP	1
8	07486	SHAFT-Flexible	1
9	88077	SCREW	1
10	• A-04705	DEFLECTOR & BLADE KIT (55 Degree)	1
11	80295	SCREW-Cap Hex Hd. (1/4-20 X 2")	1
12	84006	WASHER-Flat (1/4")	1
13	83009	WASHER-Lock (1/4")	1
14	93992	NUT-Wing (10-24)	1
15	• A-03832	BLADE-Cut-Off Kit	1
16	82531	SCREW-Mech. Hex Hd. (10-24 X 7/8")	2
17	81261	NUT-Hex (10-24)	2
18	• DA-03001 - A	STRINGHEAD-Complete (.080" Line)	1
19	A-98231 - A	HOUSING & EYELET (Dual Line)	1
20	06713	SPRING-Compression	1
21	DA-98912 - E	SPOOL & STRING (.080" Line)	1
22	DA-98866 - A	RETAINER-Spool (R.H. Thread, Black)	1

z725cea, st725cea

23	• A-07901	COUPLER ASSEMBLY	1
24	82278 - 1	BOLT-Hex Hd.	3
25	80295	SCREW-Cap Hex (1/4-20 x 2")	1
26	GM-23611 - 1	SPLIT BOOM (L.H.)	1
27	GM-23611 - 2	SPLIT BOOM (R.H.)	1
28	81267	NUT-Hex (1/4-20)	3
29	GM-28520 - 4	KNOB	1
30	• A-07903	DRIVE SHAFT HOUSING-Curved (Lower)	1
31	04154	DECAL-Warning (Also includes #7 & #9)	1
32	• A-07902	DRIVE SHAFT HOUSING-Curved (Upper)	1
33	04458	DECAL-Start Instructions	1

Figure 4

z725se, s825sev

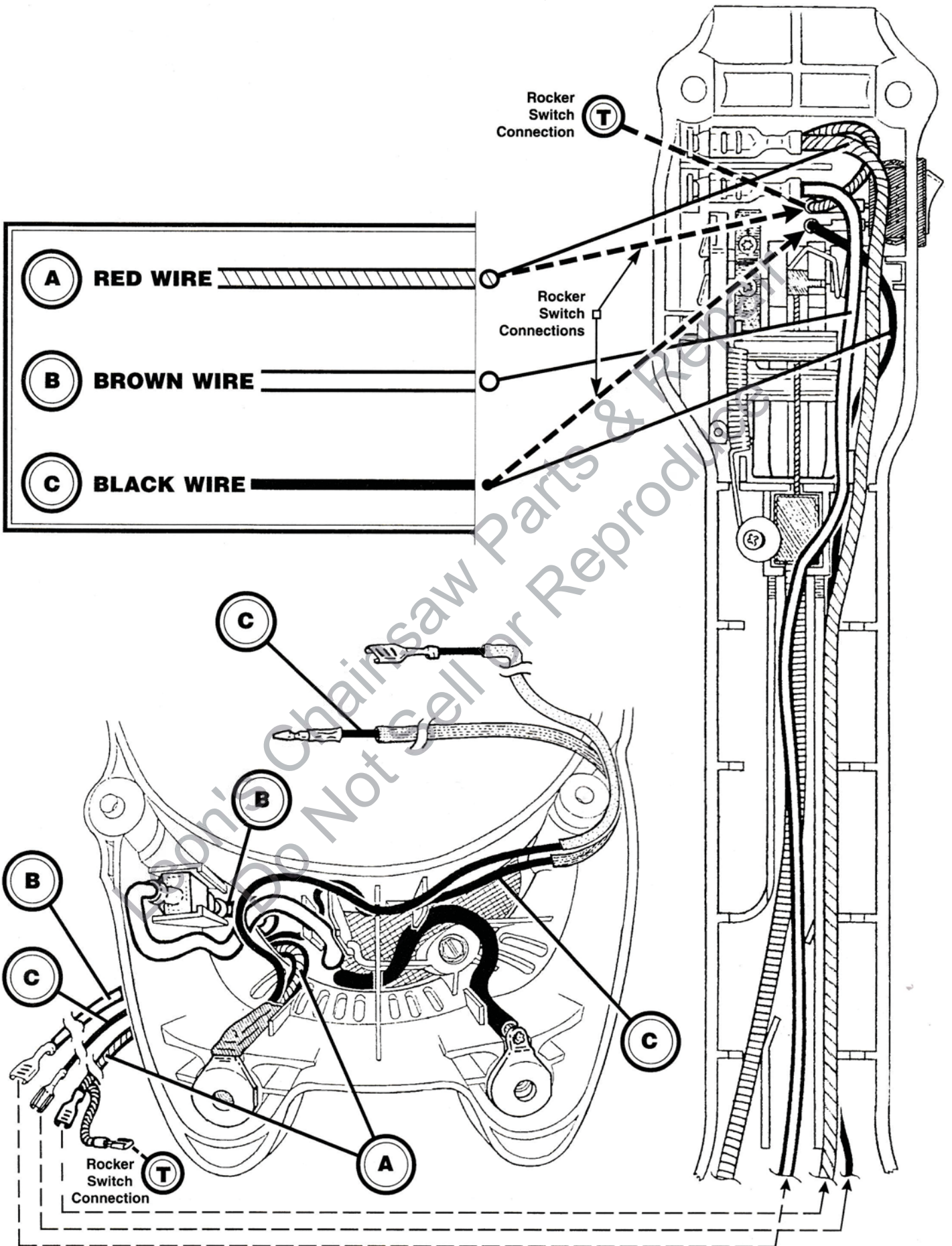


● ASSEMBLIES

NO.	PART NO.	DESCRIPTION	Qty.
1	● A-07137	FRONT HANDLE ("G")	1
2	82605	SCREW-Hex Hd. (10-24 X 1")	4
3	81208	NUT-Hex (10-24)	4
4	● A-07525	HOUSING-Drive Shaft	1
5	98818	SHAFT-Flexible	1
6	06551	DECAL-Starting Inst.	1
7	04154	DECAL-Warning	1
8	● A-04836 - C	GEAR HEAD	1
9	82590	SCREW-Taptite (10-24 X 1/2")	5
10	82298	SCREW-Hex Hd. (10-24 X 5/8")	2
11	04168 - A	WASHER-Flanged	1
12	04355	ADAPTOR-Shaft	1
13	● A-04683 - A	GRASS DEFLECTOR KIT	1
14	07076	BLADE-Cut-Off	1
15	80869	SCREW-Machine Hex Hd. (10-24 X 3/8")	2
16	81208	NUT-Hex (10-24)	2
17	● DA-03001	STRINGHEAD COMPLETE (.080" Line)	1
18	A-98231 - A	HOUSING & EYELET (Dual Line)	1
19	98848	SPRING-Compression	1
20	DA-98912 - D	SPOOL & STRING (.080" Line)	1
21	DA-98866 - A	RETAINER-Spool (R.H. Thread, Black)	1
22	07255	HANGER	1

Figure 5

All models / Wiring in Clutch Housing



NOTES

Leon's Chainsaw Parts & Repair
Do Not Sell or Reproduce

MODEL DESIGNATIONS FOR STRING TRIMMERS / BRUSHCUTTERS

1st Digit(s): m to y = Private Brand or Customized Product

- i = International / CEN Standards
- z = Mass Markets (ZR Series)
- d = Dealer Markets (DX Series)
- p = Commercial / Pro
- st = String Trimmer (Reconditioned)
- bc = Brushcutter (Reconditioned)

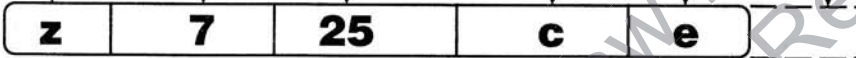
2nd Digit: 5 = 15" Cut
6 = 16" Cut
7 = 17" Cut
8 = 18" Cut

3rd / 4th Digits: 25 = 25cc
30 = 30cc
40 = 40cc

5th Digit: c = Curved Shaft
s = Straight Shaft

6th Digit: c = Clutch
d = Direct
b = Blade Included / Clutch
e = Electric Start / Clutch
a = Attachment Capable (Split Boom / Clutch)

7th Digit(s): v = Value Pack (Shoulder Strap & Spool w / Line)
(Optional): a = Attachment Capable (Split Boom / Clutch)
r = Reconditioned



(No Optional Digit in this example)

CUSTOMER ASSISTANCE

FOR THE LOCATION OF YOUR NEAREST HOMELITE SERVICING DEALER
IN THE UNITED STATES, PUERTO RICO, AND THE VIRGIN ISLANDS,

CALL: 1-800-242-4672

HEADQUARTERS

Homelite, Inc.
P.O. BOX 7047
CHARLOTTE, N.C. 28241

OVERSEAS OFFICES

NETHERLANDS

Homelite Netherlands B.V.
A Deere & Company Affiliate
Haverstraat 24
2153 GB Nieuw Vennepe
The Netherlands

FRANCE

Homelite Atlantic SARL
Groupe Deere & Co.
BP 7011
95050 Cergy Pontoise Cedex
France

AUSTRALIA

Homelite Pacific Ltd.
A Deere & Company Affiliate
ACN 008 683 538
94 Rushdale Street
P. O. Box 555 MDA
Knoxfield Vic 3180
Australia

CANADIAN OFFICES

Homelite Canada Limited

Homelite Canada Limitée

A Deere & Company Affiliate /
Une Filiale de Deere & Company
1850-55e/th Avenue
Lachine, Québec, Canada H8T 3J5
1-800-363-5715

UNIT 212-214, 590 Ebury Place
New Westminster, B.C. V3M 6K7
1-800-667-3128

20-D Voyager Court South
Etobicoke, Ontario M9W 5M7
1-800-465-2249

Homelite inc.

A Subsidiary of Deere & Company