

# ILLUSTRATED PARTS LIST

	SERIAL NUMBER PREFIX
MODELS	
600037S	11-,13-,14-,15-

## SP 60 Chain Saw



McCulloch SP 60 chain saws are identified by a model number (600037) followed by a suffix letter (S) stamped on the identification plate attached to the saw. Suffix letters denote variations in parts or assemblies in the manufacture of the saw.

Part numbers listed in this IPL which have a suffix letter or letters following the description, indicate the part is used only on the model(s) identified by the letter or letters.

Part numbers and descriptions without suffix letter or letters apply to all models of the SP 60 chain saw.

Part numbers which have one or more dots (.) preceding their description may be ordered individually but they are also included in the kit or assembly whose description begins directly above the dot(s).

Part numbers which have changed since the previous printing of the IPL covering these saws, are indicated by a dash (-) preceding the new part number.

The policy of McCulloch Corporation is one of continual improvement in design, manufacturing and engineering advancement wherever possible to assure still finer two-cycle power tools. Hence, specifications, equipment, colors, design and manufacturer's suggested list prices are subject to change without notice and McCulloch Corporation reserves the right to make such changes without prior notification or obligation to backfit or supply backfit components for units previously shipped from the factory.

November 1976

### - CONTENTS -

	<u>Page</u>
Figure 1. General .....	2
Figure 2. CHAIN BRAKE Assembly ....	4
Figure 3. Fan Housing & Starter Asy ...	4
Figure 4. Fuel Tank Assembly .....	6
Figure 5. Carburetor Assembly .....	6
Figure 6. Carburetor Assembly .....	8
Figure 7. Carburetor Assembly .....	8
Figure 8. Carburetor Assembly .....	10
Figure 9. Carburetor Assembly .....	10
Figure 10. Flywheel & Ignition System ..	12
Figure 11. Powerhead & Oiler Asys.....	14
Service Specifications .....	13
Accessories .....	15



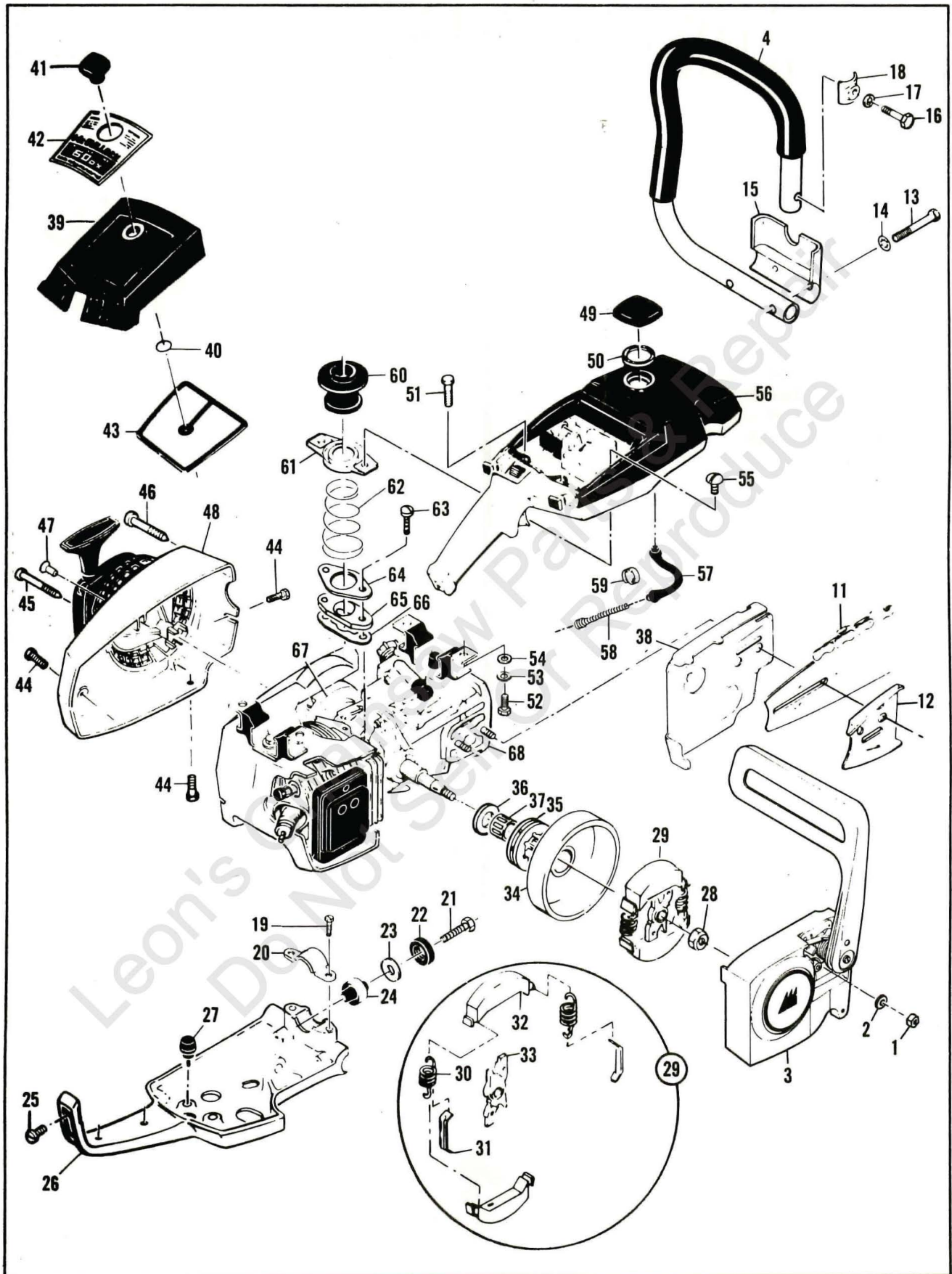


Figure 1. General

Figure 1. General

Item No.	Part Number	Description	Units Per Assy
1	-110961	Nut - Hx 5/16-24	2
2	100440	① Washer - 5/16	2
3		CHAIN BRAKE Assy (Fig 2)	
4	91586	Frame & Grip	1
5		Deleted	
6			
7			
8			
9			
10			
11		Bar & Chain Assy	
12	64325	Plate - Bar protector	1
13	102433	Screw - Hx hd 10-24 x 1-5/8	2
14	101194	Lockwasher - #10	2
15	84798	Clamp - Frame	1
16	102130	Screw - Hx hd 1/4-20 x 1-1/2	1
17	100153	Lockwasher - 1/4"	1
18	63484	Clamp - Frame	1
19	104950	Screw - Hx hd 10-24 x 5/8 (SEMS)	2
20	83819	Clamp - Lower mount	1
21	110679	Screw - Hx hd 1/4-20 x 2	1
22	84661	Grommet	1
23	110845	Washer - 1/4	1
24	85898	Mount - Lower	1
25*	105722	Screw - Fil hd 1/4-20 x 1-3/8	1
26	-90986	Brace - Frame	1
27	89403	Bumper	2
28	86113	Nut - Hx 3/8-24 L.H.	1
29	87675	Clutch Assy	1
30	83223	. Spring - Clutch	2
31	64583	. Retainer - Spring	2
32	67233	. Shoe - Clutch	2
33	89438	. Rotor - Clutch	1
34	86948	Drum - Clutch	1

Item No.	Part Number	Description	Units Per Assy
35	86943	Sprocket - 8T .375	1
36	86958	Washer - Sprocket	1
37	110330	Bearing - Sprocket	1
38	84978	Guard - Sawdust	1
39	84700	Cover Assy - Air cleaner	1
40	110565	. Ring - Retaining	1
41	68529	. Knob - Cover	1
42	91587	Nameplate	1
43	85387	Filter Assy - Air	1
44	110741	Screw - Pan hd 10-24x1/2	3
45	87871	Screw - Special	1
46	85242	① Screw - Special	1
(46)	87871	② Screw - Special	1
47	-110667	Rivet	1
48		Fan Housing & Starter (Fig.3)	
49	89322	Cap - Fuel	1
50	69767	. Gasket - Fuel cap	1
51	110746	Screw - Hx hd 10-24 x 1/2	2
52	102861	Screw - Hx hd 1/4-20x5/8	2
53	100153	Lockwasher - 1/4	2
54	100005	Washer - 1/4	2
55	110807	Screw - Pan hd 8-32 x 5/16	2
56		Fuel Tank Assy (Fig 4)	
57	69598	Line - Pulse	1
58	67944	Spring	1
59	87826	Clamp - Pulse line	1
60	87841	① Boot - Port	1
(60)	88834A	② Boot - Port	1
61	83122	① Clamp Assy - Boot	1
(61)	86175	② Clamp Assy - Boot	1
62	86190	Spring - Ground	1
63	104396	Screw - Pan hd 10-24 x 3/4	2
64	-69759A	Clamp - Boot	1
65	87844	Insulator - Inlet	1
66	88740	Gasket - Insulator	1
67		Flywheel & Ignition System (Fig 10)	
68		Powerhead & Oiler Asys (See Fig 11)	

\*Also shown as Item 19 in Fig 5.

① Used on models with serial number prefix 11-, 13-, 14-.

② Used on models with serial number prefix 15-.

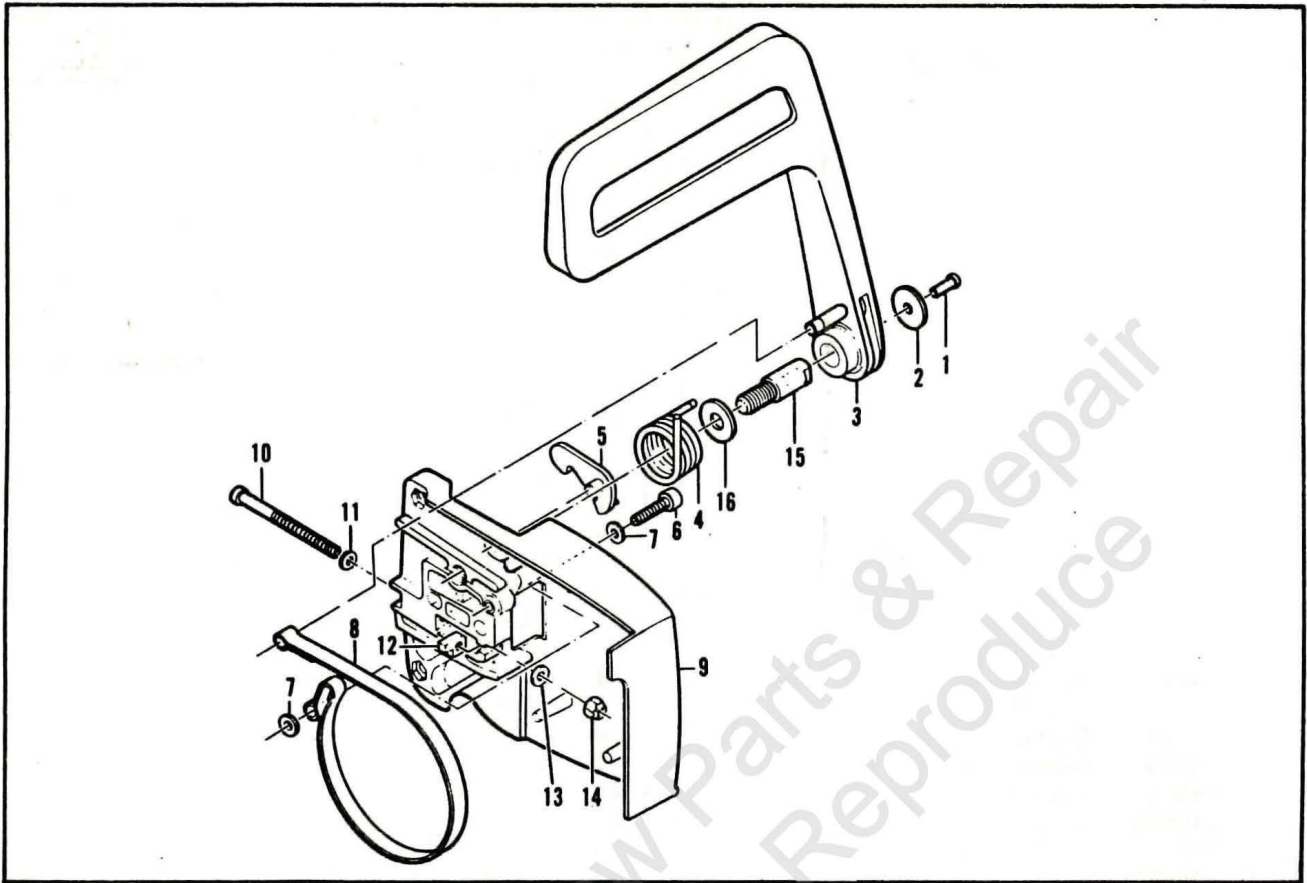


Figure 2. CHAIN BRAKE Assembly

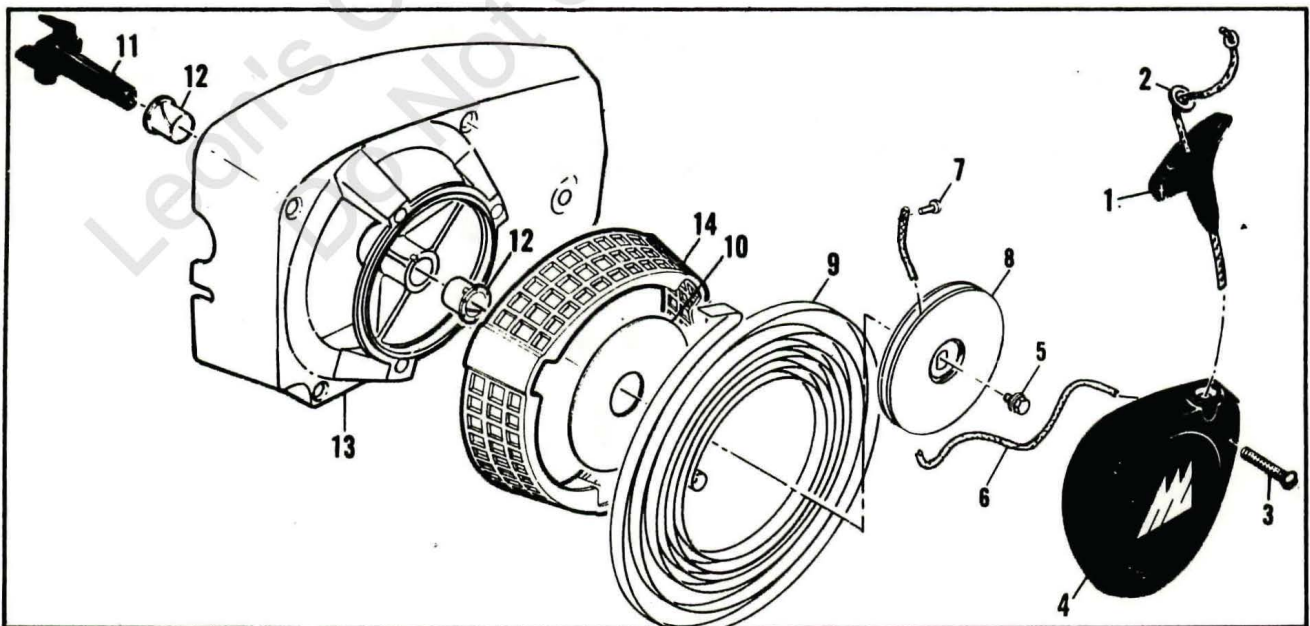


Figure 3. Fan Housing & Starter Assemblies

Figure 2. Chain Brake Assembly

Item No.	Part Number	Description	Units Per Assy
	91278	Chain Brake Assy	1
1	102500	. Screw - Pan hd 10-24 x 1/2	1
2	91273	. Washer - Special	1
3	-91251A	. Lever Assy	1
4	91239	. Spring	1
5	-91235A	. Latch Assy	1
6	105738	. Screw - Skt hd 1/4-20 x 7/8	1
7	91274	. Washer - Special	2
8	91238	. Band	1

Item No.	Part Number	Description	Units Per Assy
9	91249	. Housing Assy	1
10	110527	. . Screw - Fil hd 10-24 x 2-3/4	1
11	110264	. . Washer - #10	1
12	61705	. . Nut - Bar adjusting	1
13	100002	. . Washer - #10	1
14	102067	. . Nut - Hex 10-24	1
15	91246	. . Pin - Lever pivot	1
16	91245	. . Washer - Thrust	1

Figure 3. Fan Housing & Starter Assemblies

Item No.	Part Number	Description	Units Per Assy.
1	91255	Kit - Starter handle	1
2	105490	. Washer - Starter handle	1
	87667	Fan Housing & Starter Assy	1
3	110646	. Screw - Oval hd 8-32 x 1-1/8	3
4	87672	. Cover - Starter	1
5	110341	. Screw - Hx hd 10-24 x 1/2	1
6	68162	. Rope - Starter	1

Item No.	Part Number	Description	Units Per Assy.
7	110470	. Rivet - Rope	1
8	85122	. Drum - Starter	1
9	87680	. Spring - Rewind	1
10	86053	. Shield - Spring	1
11	83748	. Shaft - Starter	1
12	57535	. Bushing - Starter	2
13	87693	. Kit - Fan housing	1
14	87674	. . Guard - Sawdust	1

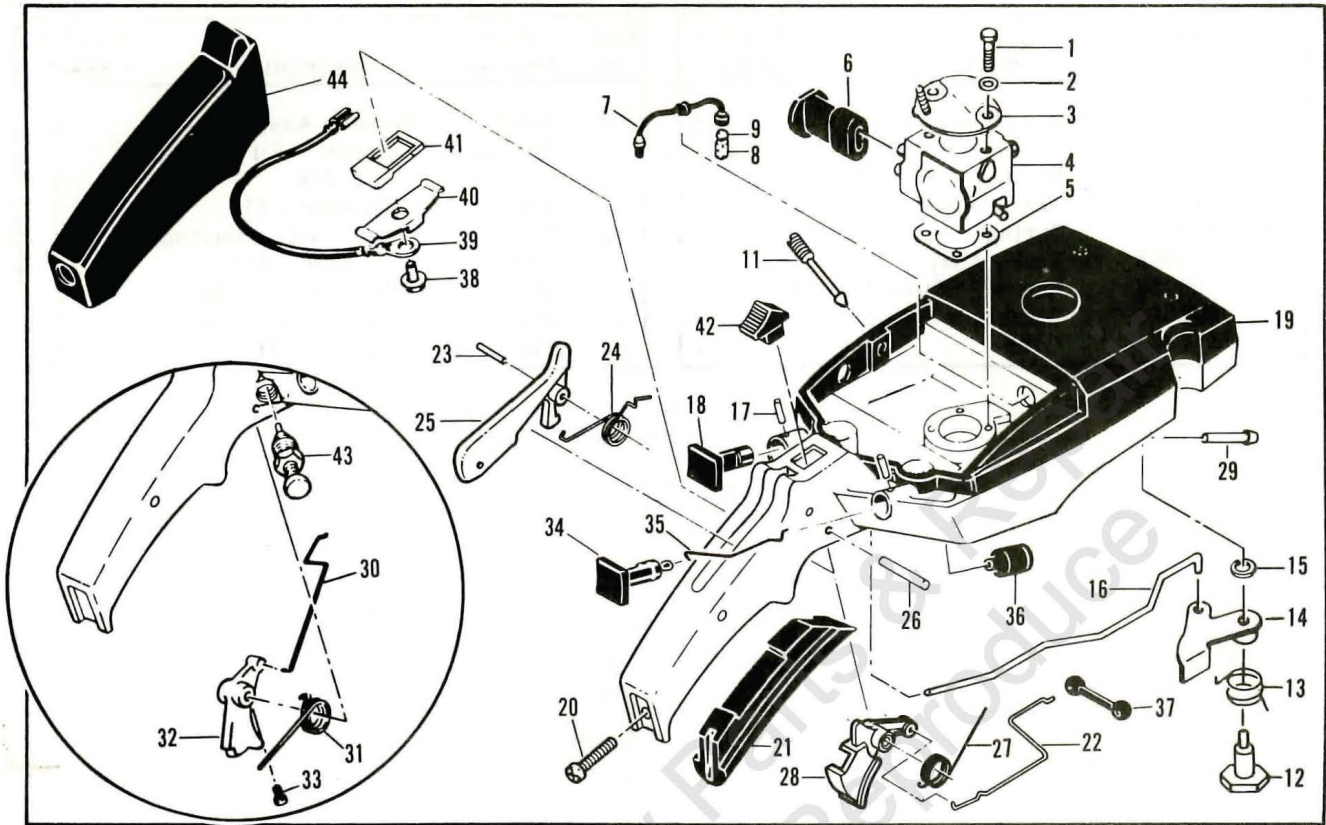


Figure 4. Fuel Tank Assembly

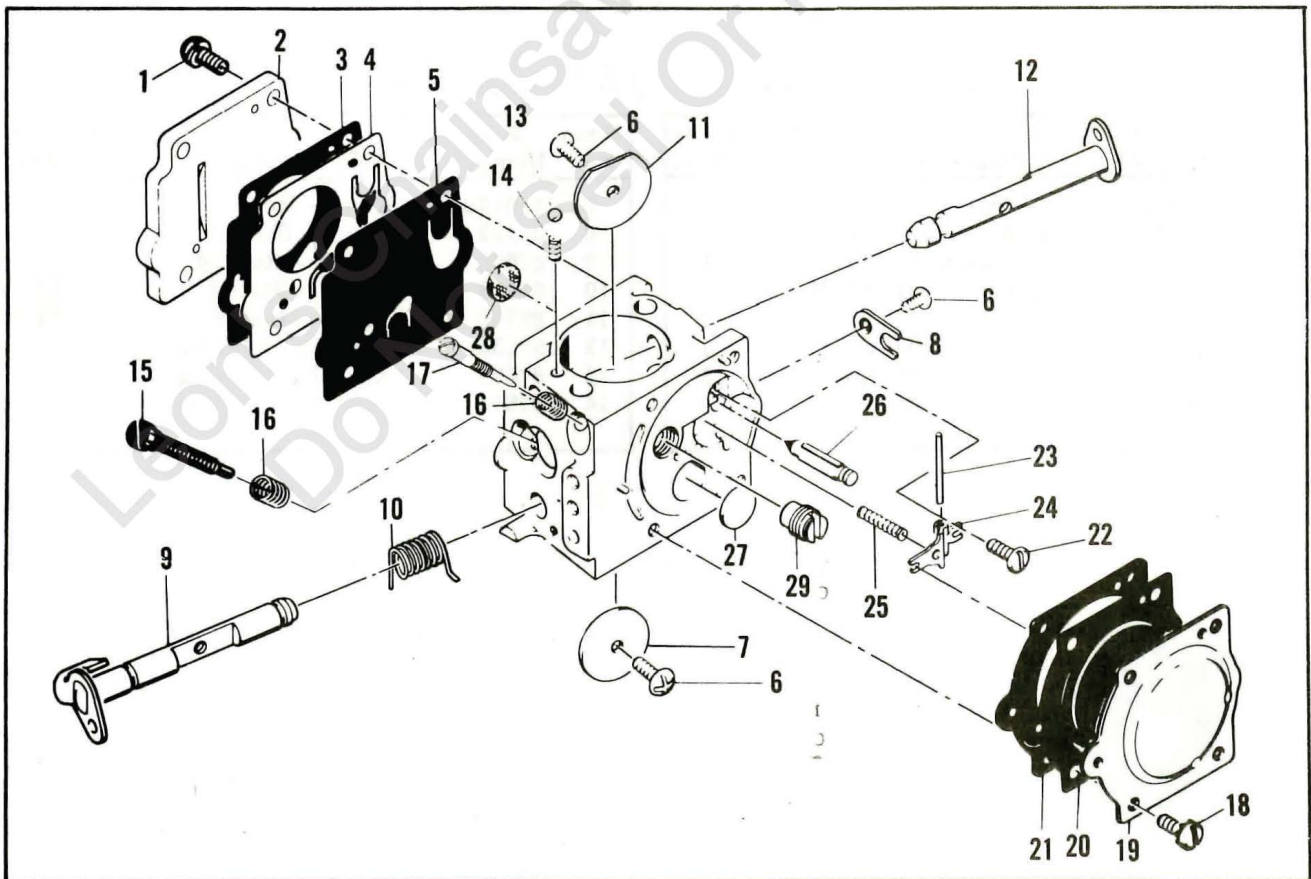


Figure 5. Carburetor Assembly

Figure 4. Fuel Tank Assembly

Item No.	Part Number	Description	Units Per Assy.	Item No.	Part Number	Description	Units Per Assy.
1	110894	Screw - Hx hd 10-24 x 2-1/8	2	22	-92155 ③	. Rod - Throttle	1
2	-110964	Washer	2	23	-105654 ③	. Pin - Roll 1/8 x 7/8	1
3	83204	Bracket Assembly	1	24	-92154 ③	. Spring - Trigger release	1
4		Carburetor Assy (Fig. 6,7)		25	-92153 ③	. Release - Trigger	1
5	86189	Gasket - Carburetor	1	26	110378	. Pin - Roll 3/16 x 15/16	1
6	69629 ①	Boot - Carburetor controls	1	27	-92152 ③	. Spring - Trigger	1
(6)	85901 ②	Boot - Carburetor controls	1	28	-92151 ③	. Trigger - Throttle	1
7	64848	Hose Assembly - Fuel	1	29	69600	. Nipple - Pulse line	1
8	63932	. Filter - Fuel	1	30	69632	④ Rod - Throttle	1
9	100440	. Washer	1	31	87178	④ Spring - Trigger	1
10		(Deleted)		32	88796	④ Trigger - Throttle	1
11	86273	Screw - Idle speed	1	33	110668	④ Screw - Filhd 8-36 x 5/8	1
12	69594	Pivot - Oiler lever	1	34	69630	Button - Choke	1
13	69781	Spring - Oiler lever	1	35	69631	Rod - Choke	1
14	69825	Lever Assembly - Oiler	1	36	69597	Boot - Control rod	2
15	105048	Washer - 3/16	1	37	69043	Snubber - Rod	1
16	69802	Rod - Oiler	1	38	110706	Screw - Filhd 8-18 x 1/2 (SEMS)	1
17	105673	Pin - Roll 3/32 x 9/16	2	39	83661	Wire Assy - Stop switch	1
18	63044	Button - Oiler	1	40	62451	Contact - Switch	1
19	-87888A ③	Tank/Control Assy	1	41	62950A	Base - Switch	1
(19)	-87893A ④	Tank Assy - Fuel	1	42	68846	Button - Switch	1
20	105722	. Screw - Filhd 1/4-20 x 1-3/8	1	43	85451	④ Latch Assy - Throttle	1
21	89400	. Insert - Handle grip	1	44	91583	④ Grip - Handle	1

- ① Used on models with Carburetor Assy, P/N 87821 (Figure 9).
- ② Used on models with Carburetor Assy, P/N 85916 (Figure 8).
- ③ Used on models with serial number prefix 15-.
- ④ Used on models with serial number prefix 11-, 13-, 14-.

Figure 5. Carburetor Assembly

Item No.	Part Number	Description	Units Per Assy	Item No.	Part Number	Description	Units Per Assy
***89869		Carburetor Assy	1	19	83761	. Cover - Diaphragm	1
1	67501	. Screw - Pump cover	4	20	*67499	. Diaphragm - Metering	1
2	88731	. Kit - Pump cover	1	21	*67496	. Gasket - Diaphragm	1
3	**88617	. . Gasket - Cover	1	22	*67500	. Screw - Lever pin	1
4	*67498	. Diaphragm - Check valve	1	23	*67508	. Pin - Lever	1
5	*83114	. Diaphragm - Fuel pump	1	24	*67509	. Lever - Inlet	1
6	*47690	. Screw - Plate	3	25	*67503	. Spring - Lever	1
7	83762	. Plate - Throttle	1	26	*67491	. Valve - Needle	1
8	67489	. Clip - Shaft	1	27	*71690	. Plug - 3/8	1
9	67486	. Shaft Assy - Throttle	1	28	*67507	. Screen - Fuel	1
10	85981	. Spring - Throttle return	1	29	90348	. Jet - High speed (31)	1
11	67490	. Plate - Choke	1		90349	Jet - High speed (29)	Alt.
12	67488	. Shaft Assy - Choke	1		90350	Jet - High speed (28)	Alt.
13	*100302	. Ball - Choke friction	1		90351	Jet - High speed (26)	Alt.
14	*67504	. Spring - Choke friction	1		*88619	Kit - Gasket	
15	*68106	. Screw - Idle speed	1		88620	Kit - Repair	
16	*67502	. Spring - Idle	2				
17	90345	. Needle - Idle mixture	1				
18	70798	. Screw - Diaphragm cover	4				

Note: Before ordering parts, identify carburetor on saw.

\*\*\*This is one of three carburetors used alternately on models with serial number prefix 11-,13-,14-.

\*\* Contained in Gasket Kit 88619

\* Contained in Repair Kit 88620

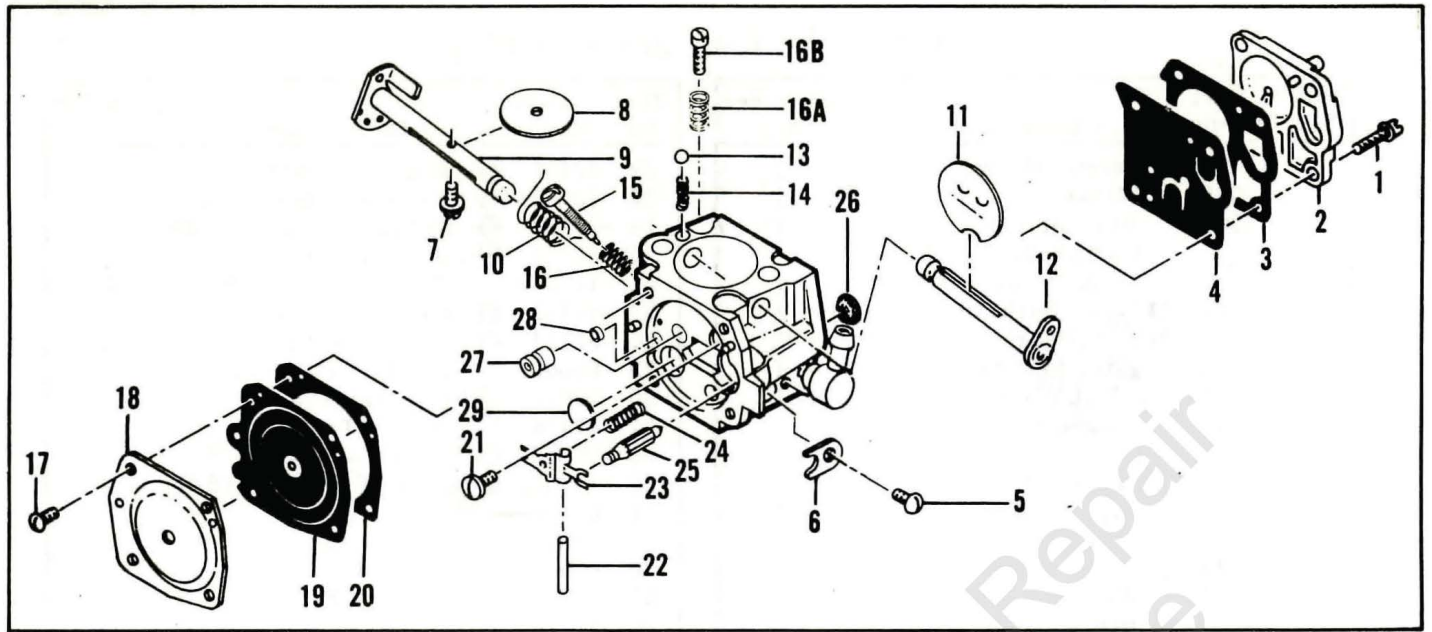


Figure 6. Carburetor Assembly

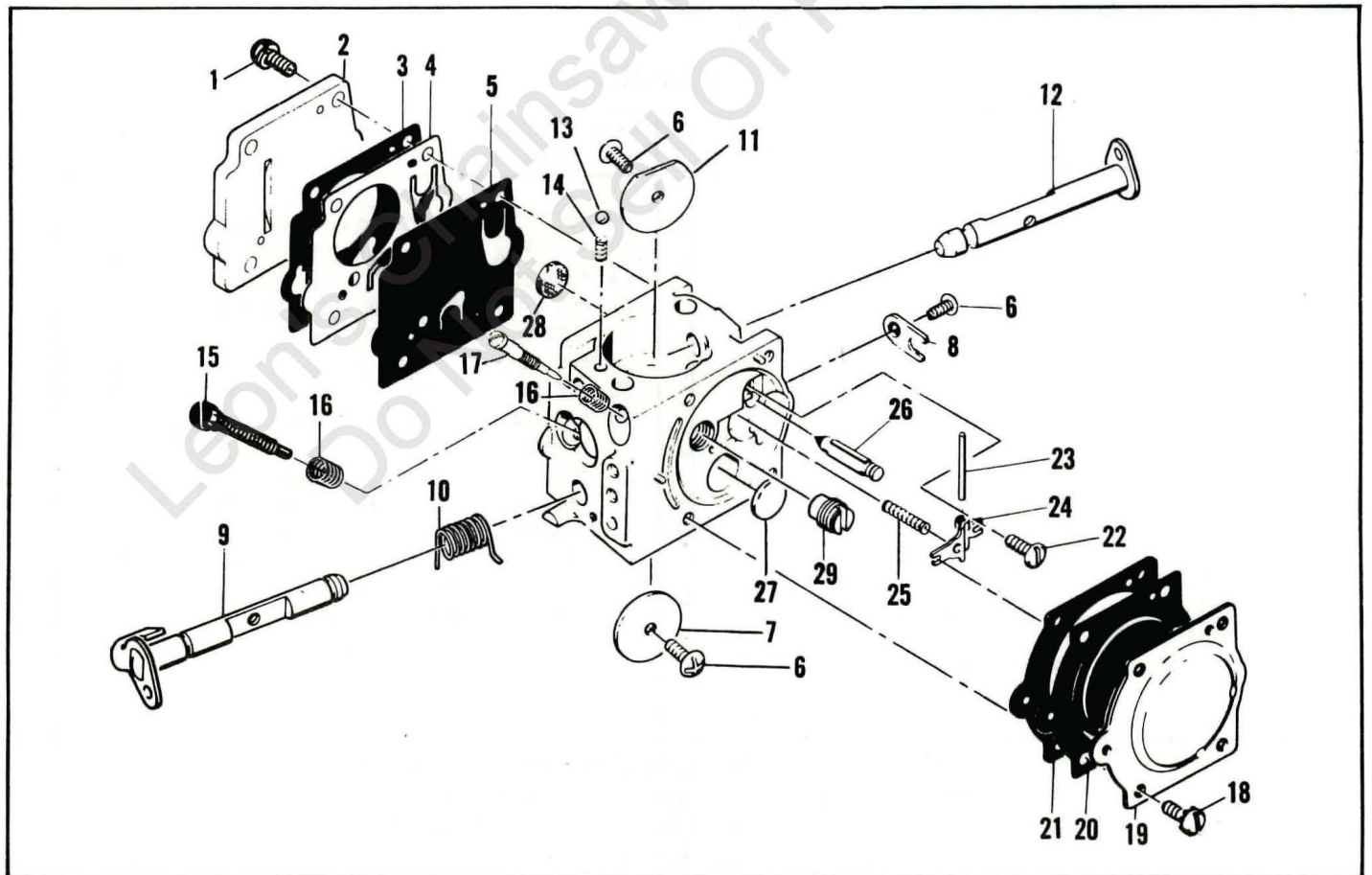


Figure 7. Carburetor Assembly



Figure 6. Carburetor Assembly

Item No.	Part Number	Description	Units Per Assy
	**91121	Carburetor Assy	1
1	52933	. Screw - Pump cover	4
2	66628	. Cover - Pump	1
3	66629	. Gasket - Pump cover	1
4	*66630	. Diaphragm - Fuel pump	1
5	48780	. Screw - Throttle shaft clip	1
6	66646	. Clip - Throttle shaft	1
7	*48780	. Screw - Throttle plate	1
8	51720	. Plate - Throttle	1
9	87922	. Shaft Assy - Throttle	1
10	*67136	. Spring - Throttle shaft	1
11	65856	. Plate - Choke	1
12	83725	. Shaft Assy - Choke	1
13	100071	. Ball - Choke friction	1
14	48759	. Spring - Choke friction	1
15	88768	. Needle - Idle mixture	1
16	*66626	. Spring - Idle	1
16A	66626	. Spring - Idle	1
16B	66625	. Screw - Idle speed adjustment	1

Item No.	Part Number	Description	Units Per Assy
17	51721	. Screw - Diaphragm cover	4
18	83724	. Cover - Diaphragm	1
19	*66632	. Diaphragm - Metering	1
20	66633	. Gasket - Diaphragm	1
21	*66644	. Screw - Inlet lever pin	1
22	*66636	. Pin - Inlet lever	1
23	*66638	. Lever - Inlet	1
24	*66404	. Spring - Inlet lever	1
25	66637	. Needle - Inlet	1
26	*66623	. Screen - Fuel inlet	1
27	88771	. Jet - H/S fuel (029)	1
	88772	. Jet - H/S fuel (028)	Alt.
	88781	. Jet - H/S fuel (027)	Alt.
28	52928	. Plug - Cup	1
29	*66622	. Plug - Welch	1
	*88774	Gasket Set	
	88775	Repair Kit	
	88776	Gasket & Diaphragm Set	

NOTE: Before ordering parts, identify carburetor on saw.

\*\* This is one of three carburetors used alternately on models with serial number prefix 11-, 13-, 14-.

\* Contained in Repair Kit, P/N 88775.

Figure 7. Carburetor Assembly

Item No.	Part Number	Description	Units Per Assy
	***91275	Carburetor Assy	1
1	67501	. Screw - Pump cover	4
2	88731	. Kit - Pump cover	1
3	**88617	. Gasket - Cover	1
4	*67498	. Diaphragm - Check valve	1
5	*83114	. Diaphragm - Fuel pump	1
6	*47690	. Screw - Plate	3
7	83762	. Plate - Throttle	1
8	67489	. Clip - Shaft	1
9	67486	. Shaft Assy - Throttle	1
10	85981	. Spring - Throttle return	1
11	67490	. Plate - Choke	1
12	67488	. Shaft Assy - Choke	1
13	*100302	. Ball - Choke friction	1
14	*67504	. Spring - Choke friction	1
15	*68106	. Screw - Idle speed	1
16	*67502	. Spring - Idle	2
17	90345	. Needle - Idle mixture	1
18	70798	. Screw - Diaphragm cover	4

Item No.	Part Number	Description	Units Per Assy
19	83761	. Cover - Diaphragm	1
20	*67499	. Diaphragm - Metering	1
21	**67496	. Gasket - Diaphragm	1
22	*67500	. Screw - Lever pin	1
23	*67508	. Pin - Lever	1
24	*67509	. Lever - Inlet	1
25	*67503	. Spring - Lever	1
26	*67491	. Valve - Needle	1
27	*71690	. Plug - 3/8	1
28	*67507	. Screen - Fuel	1
29	90350	. Jet - H/S fuel (28)	1
	90351	. Jet - H/S fuel (26)	Alt
	90349	. Jet - H/S fuel (29)	Alt
	*88619	Kit - Gasket	
	88620	Kit - Repair	

NOTE: Before ordering parts, identify carburetor on saw.

\*\*\* This is one of three carburetors used alternately on models with serial number prefix 11-, 13-, 14-.

\*\* Contained in Gasket Kit, P/N 88619.

\* Contained in Repair Kit, P/N 88620.

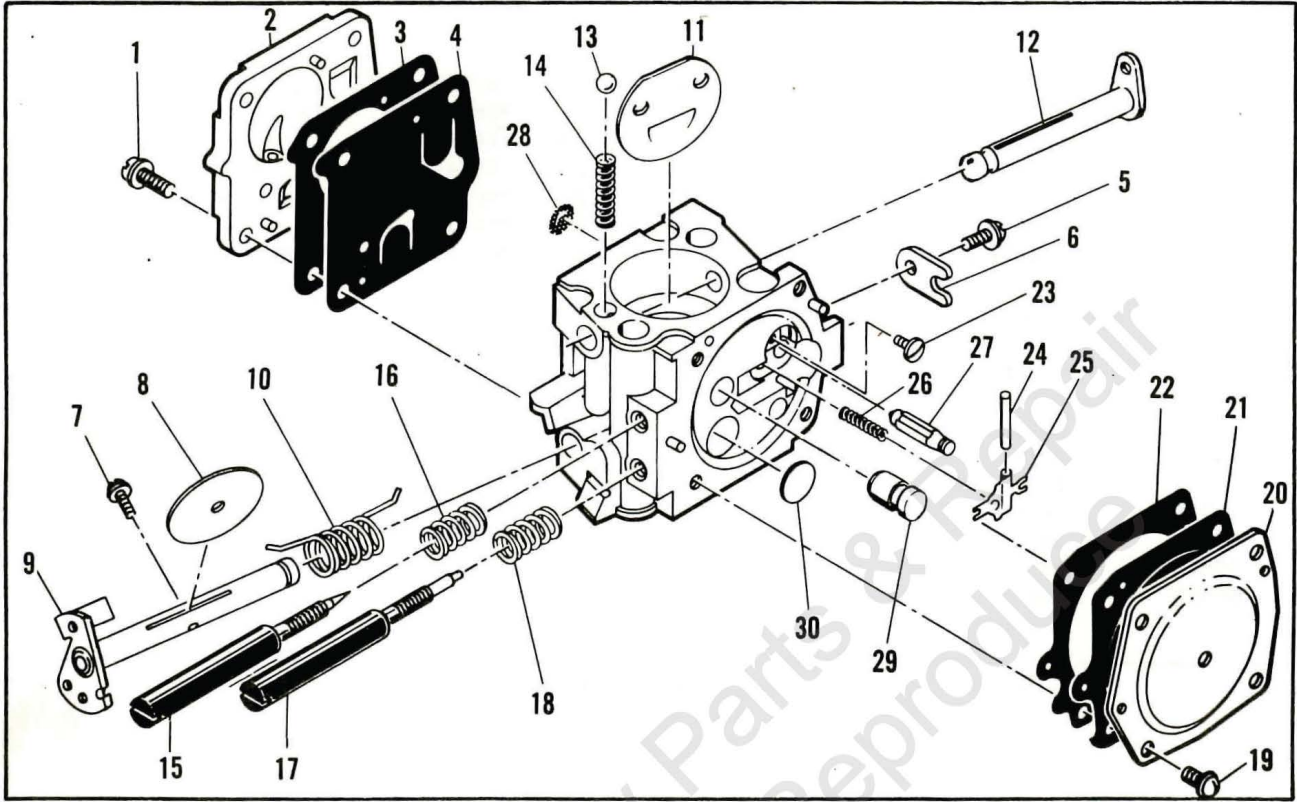


Figure 8. Carburetor Assembly

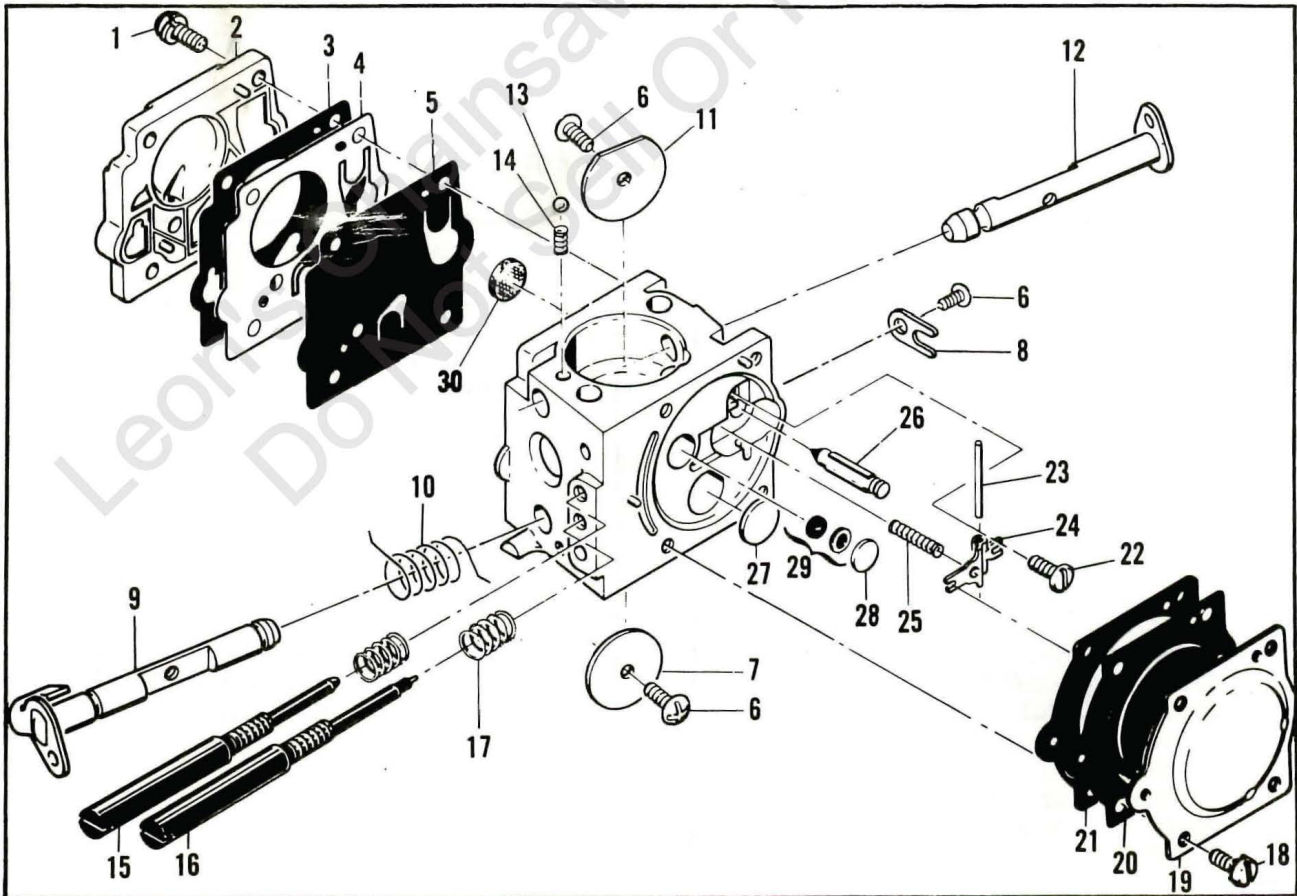


Figure 9. Carburetor Assembly

Figure 8. Carburetor Assembly

Item No.	Part Number	Description	Units Per Assy
	*85916	Carburetor Assy (S)	1
1	52933	. Screw - Pump cover	4
2	66628	. Cover - Pump	1
3	66629	. Gasket - Cover	1
4	66630	. Diaphragm - Fuel pump	1
5	48780	. Screw - Clip retainer	1
6	66646	. Clip - Throttle shaft	1
7	48780	. Screw - Plate	1
8	51720	. Plate - Throttle	1
9	83546	. Shaft Assy - Throttle	1
10	67136	. Spring - Throttle return	1
11	65856	. Plate - Choke	1
12	83725	. Shaft Assy - Choke	1
13	100071	. Ball - Choke friction	1
14	52930	. Spring - Choke friction	1
15	86169	. Needle - High speed	1

Item No.	Part Number	Description	Units Per Assy
16	52936	. Spring - High speed needle	1
17	86170	. Needle - Idle	1
18	67133	. Spring - Idle needle	1
19	51721	. Screw - Diaphragm cover	4
20	83724	. Cover - Diaphragm	1
21	66632	. Diaphragm - Metering	1
22	66633	. Gasket - Diaphragm	1
23	83479	. Screw - Lever pin	1
24	66636	. Pin - Lever	1
25	66638	. Lever - Metering	1
26	66404	. Spring - Lever	1
27	66637	. Valve - Needle	1
28	66623	. Screen - Fuel inlet	1
29	83729	. Check Valve - Nozzle	1
30	66622	. Plug - Welch	1

NOTE: Before ordering parts, identify carburetor on saw.  
 \* This is one of two carburetors used alternately on models with serial number prefix 15-.

Figure 9. Carburetor Assembly

Item No.	Part Number	Description	Units Per Assy
	**87821	Carburetor Assy (B, C, D, J)	1
1	67501	. Screw - Pump cover	4
2	83760	. Cover - Pump	1
3	*67495	. Gasket - Cover	1
4	*67498	. Diaphragm - Check valve	1
5	*83114	. Diaphragm - Fuel pump	1
6	*47690	. Screw - Plate	3
7	83762	. Plate - Throttle	1
8	67489	. Clip - Shaft	1
9	85980	. Shaft Assy - Throttle	1
10	85981	. Spring - Throttle return	1
11	67490	. Plate - Choke	1
12	67488	. Shaft Assy - Choke	1
13	*100302	. Ball - Choke friction	1
14	*67504	. Spring - Choke friction	1
15	*85979	. Needle - High speed	1
16	*85982	. Needle - Idle	1

Item No.	Part Number	Description	Units Per Assy
17	*67502	. Spring - Needle	2
18	70798	. Screw - Diaphragm	4
19	83761	. Cover - Diaphragm	1
20	*67499	. Diaphragm - Metering	1
21	*67496	. Gasket - Diaphragm	1
22	*67500	. Screw - Lever pin	1
23	*67508	. Pin - Lever	1
24	*67509	. Lever - Inlet	1
25	*67503	. Spring - Lever	1
26	*67491	. Valve - Needle	1
27	*71690	. Plug - 3/8	1
28	*69506	. Plug - 5/16	1
29	83758	. Kit - Valve & Seat Assy	1
30	*67507	. Screen - Fuel	1
	*67482	Gasket Set	
	85987	Repair Kit	

NOTE: Before ordering parts, identify carburetor on saw.  
 \*\* This is one of two carburetors used alternately on models with serial number prefix 15-.  
 \* Indicates parts included in Repair Kit, P/N 85987.

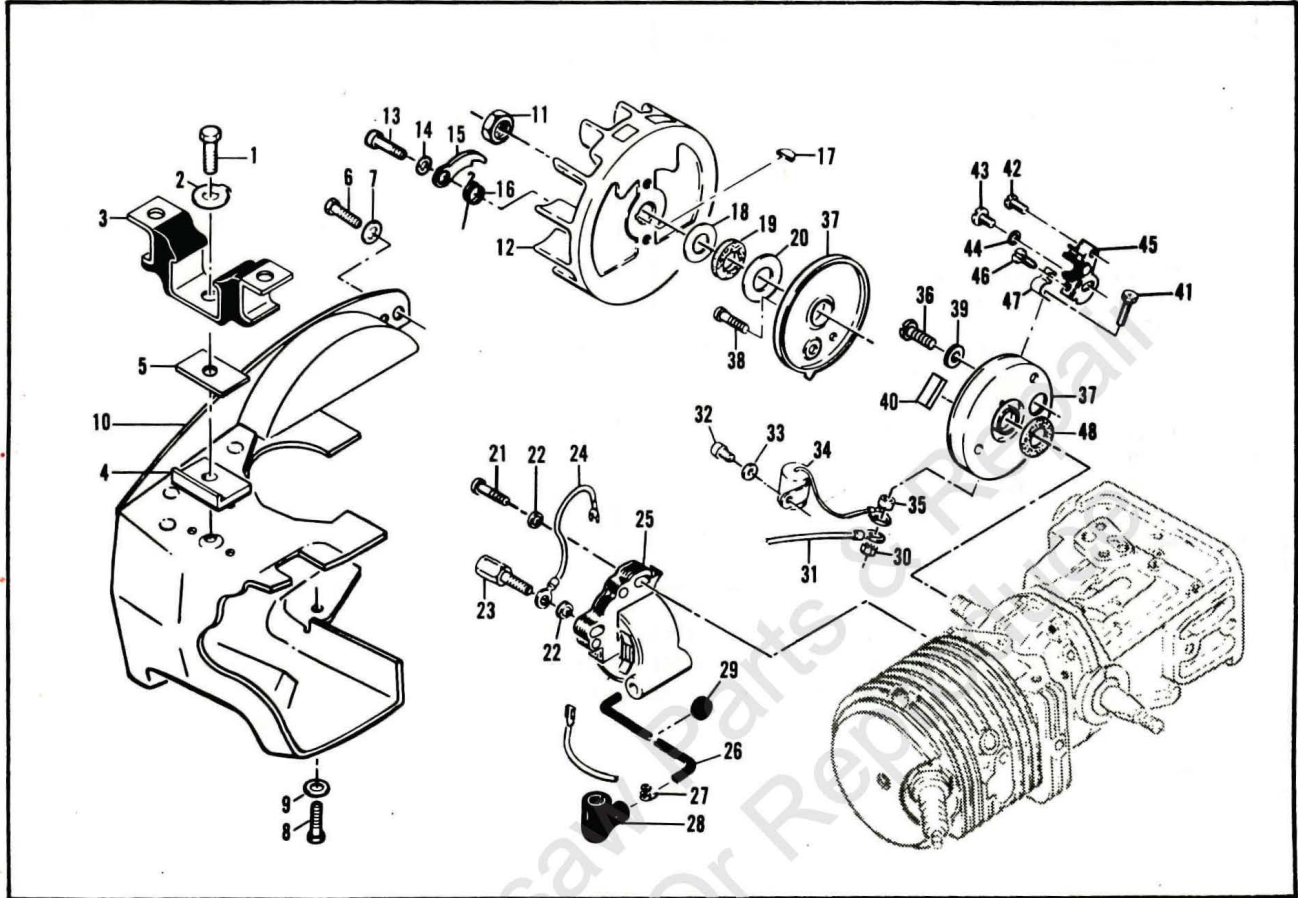


Figure 10. Flywheel & Ignition System

Figure 10. Flywheel & Ignition System

Item No.	Part Number	Description	Units Per Asy	Item No.	Part Number	Description	Units Per Asy
1	83811	Screw-Special	1	25	87246A	Coil & Lamination Asy	1
2	69924	Plate-Lock	1	26	50120	. Wire Asy-Spark plug	1
3	91578	Mount-Rear	1	27	55061	. . Connector	1
4	-83693	Kit-Rear mount adaptor	1	28	85758	. . Boot	1
5	84619	. Insulator-Rear mount	1	29	-100268	. Grommet	1
6	110776	Screw- Fil hd 8-32 x 3/8	1	30	100298	Nut-Hx 6-32	1
7	100057	Washer-Lock #8	1	31	85796	Wire Asy-Primary	1
8	-110640	Screw-Hx hd 12-24 x 5/8	1	32	-110338	Screw-Fil hd 8-32 x 1/2	1
9	110106	Washer-#12	1	33	100080	Washer-#8	1
10	-85747A	Shroud Asy	1	34	85358	Condenser	1
11	110703	Nut-Hx 3/8-24	1	35	62365	Spacer-Breaker box	1
12	86068	Flywheel Asy	1	36	110584	Screw-Pan hd 8-32 x 3/4	1
13	88804	Screw-Pawl pivot	2	37	-91852	Kit-Breaker Box & Cover	1
14	83241	Washer-Special	2	38	-110489	. Screw-Pan hd 6-32 x 7/16	1
15	67546	Pawl-Starter	2	39	-91838	. Washer	1
16	67545	Spring-Pawl	2	40	54184	Wiper-Cam	1
17	100106	Key-Woodruff	1	41	110346	Screw-Hx hd 6-32 x 3/4	1
18	67057	Washer-Thrust	1	42	110811	Screw-Pan hd 8-32 x 3/8	1
19	67056	Seal-Breaker box cover	1	43	-110969	Screw-Hx hd 8-32 x 1/2	1
20	67054	Washer-Thrust	1	44	105976	Washer-#8	1
21	110127	Screw-Hx hd 10-24 x 7/8 (SEMS)	1	45	88808	Breaker Asy	1
22	100002	Washer-#10	2	46	110706	Screw-Pan hd 6-32 x 7/16 s/t	1
23	83512	Stud-Special	1	47	83126	Strap-Conduction	1
24	85798	Wire Asy-Ground	1	48	67051	Seal-Breaker box	1

Service Specifications

Spark Plug Gap	-	.025 inch (.63 mm)
Lamination Gap	-	.010 to .012 inch (.25 to .30 mm)
Breaker Point Gap	-	.019 to .020 inch (.48 to .51 mm)
Timing	-	26° BTDC
Clutch Engagement Speed	-	2800 to 3000 R.P.M.
Torques	-	Connecting Rod Screws: 65 to 70 pound x inches (8.5 to 9.2 N.m)
		Clutch Nut: 160 to 170 pound x inches (18 to 19 N.m)
		Flywheel Nut: 265 to 325 pound x inches (30 to 37 N.m)

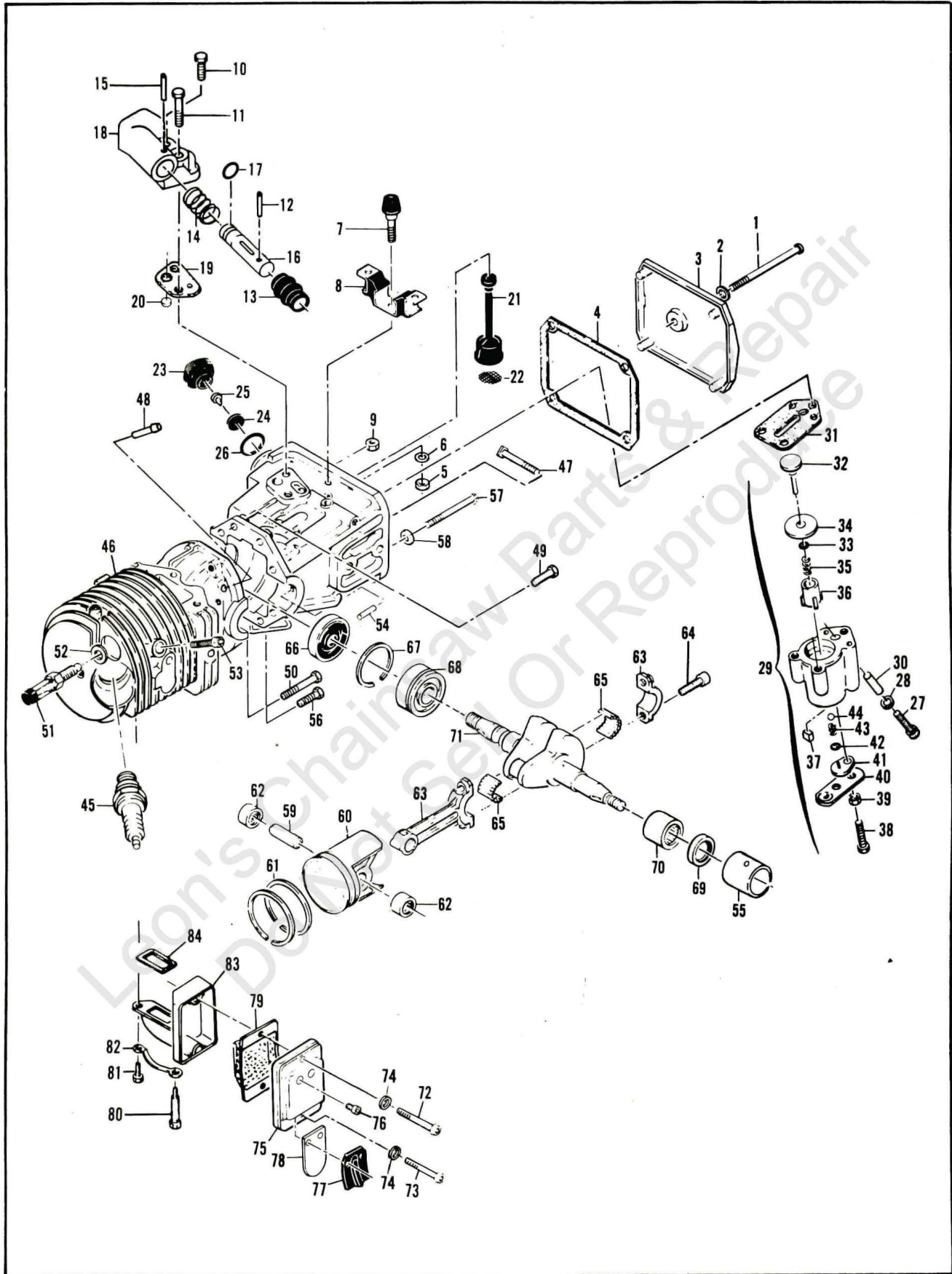


Figure 11. Powerhead & Oiler Assemblies

Figure 11. Powerhead & Oiler Assemblies

Item No.	Part Number	Description	Units Per Asy.
1	110291	Screw - Pan hd 10-24 x 2-5/8	1
2	110921	Washer - Sealing	1
3	86304	Cover - Oil tank	1
4	86306	Gasket - Cover	1
5	101143	Nut - Hx 1/4-20	1
6	102523	Washer - 1/4	1
7	69832	Bumper - Front	1
8	91582	Mount - Front	1
9	100955	Nut - Hx 8-32	1
10	110670	Screw - Pan hd 8-32 x 5/8	1
11	105245	Screw - Fil hd 8-32 x 1 (SEMS)	1
	-91507	Kit - Manual Oiler	1
12	105673	. Pin - Roll 3/32 x 9/16	1
13	69586	. Boot - Plunger	1
14	69585	. Spring - Plunger	1
15	101556	. Pin - Roll 1/8 x 5/8	1
16	91219	. Plunger - Pump	1
17	105614	. "O" Ring	1
18	91218	. Body - Oil pump	1
19	91669	. Gasket - Oil pump	1
20	91668	. Valve - Oiler	1
21	91672	Hose Asy - Oil	1
22	51506	Screen - Hose	1
23	87270	Cap Asy - Oil	1
24	87269	. Retainer	1
25	86402	. Valve - Check	1
26	101148	"O" Ring	1
27	110865	Screw - Hx hd 10-24 x 7/8	1
28	100003	Washer - #10	1
29	-89115A	Pump Asy - Pulse	1
30	-91774	. Sleeve - Pulse Pump	1
31	-92818	. Seal - Pulse Pump	1
32	60260A	. Piston Asy - Pump	1
33	105603	. "O" Ring	1
34	86182	. Ring - Piston	1
35	60259	. Spring - Piston	1
36	62227	. Sleeve - Adjustment	1
37	-91259	. Pad - Oil Pump	1
38	110386	. Screw - Hx hd 8-32 x 1	1
39	100251	. Nut - Hx 8-32	1
40	89114	. Clamp - Pump	1
41	62407	. Cover - Outlet valve	1
42	106104	. "O" Ring	1
43	-92844	. Spring - Outlet valve	1

Item No.	Part Number	Description	Units Per Asy.
44	102809	. Ball - Valve	1
45	63432	Spark Plug	1
46	-87737A	Cyl/Crankcase Asy	1
47	62065	. Bolt - Bar mounting	2
48	69600	. Nipple - Pulse line	1
49	110288	. Screw - Hx hd 8-32 x 3/4	2
50	110618	. Screw - Hx hd 8-32 x 1-3/8	1
51	87866	Valve - DSP	1
52	85505	Washer - Valve	1
53	110681	Screw - Skt hd 10-24 x 1/4	1
54	110851	Pin - Dowel	1
55*	87152	Insert - Bearing	1
56	110288	Screw - Hx hd 8-32 x 3/4	1
57	62105	Screw Asy - Sealing	4
58	62842	. Washer - Sealing	4
59	87710	Pin - Piston	1
60	87713	Piston Asy	1
61	87716	. Ring Set - Piston	1
62	110590	. Bearing - Needle	2
63	85352	Connecting Rod Asy	1
64	61627A	. Screw - Special	2
65	63225	. Roller (Set of 20)	1
66	61618	Seal - Oil	1
67	63464	Ring - Snap	1
68	63429B	Bearing - Ball	1
69*	110260	Seal - Oil	1
70*	104357	Bearing - Needle	1
71	87699	Crankshaft	1
72	101563	Screw - Skt hd 10-24 x 1-1/2	1
73	104534	Screw - Skt hd 10-24 x 1-13/32	1
74	24236	Washer - Special	2
75	87683	Cover & Valve Asy	1
76	110472	. Screw - Skt hd 8-32 x 5/16	2
77	87286	. Stop - Reed	1
78	87682	. Valve - Reed	1
79	85152	Baffle - Muffler	1
80	68187	Screw - Special	1
81	110529	Screw - Hx hd 10-24 x 1/2	1
82	67922	Lockplate	1
83	87663	Body & Duct Asy	1
84	84007	Gasket - Muffler	1

① Used on models with serial number prefix 11-, 13-, 14-.

\* Contained in Needle Insert Bearing Asy, P/N 87151.

Accessories

Part Number	Description
84922	Kit - Spark arrester baffle
86355	Kit - Preheater
85488	Guard - Crankshaft seal
63746	Wrench

**McCULLOCH**



● MANUFACTURING ● SALES ● SERVICE ●

**McCULLOCH CORPORATION**

P.O. BOX 92180, LOS ANGELES, CALIFORNIA 90009

**INTERNATIONAL DIVISIONS:**

LOS ANGELES, CALIFORNIA, P.O. BOX 92181  
SINGAPORE, GOLDHILL PLAZA, SINGAPORE II  
SAO PAULO, BRAZIL, CAIXA POSTAL 21-492

**McCULLOCH OF CANADA LTD.**

6338 VISCOUNT ROAD, MALTON, ONTARIO L4V 1H4, CANADA

**McCULLOCH OF EUROPE, N. V.**

GEERDEGEM SCHONENBERG, 299 2800 MECHELEN, BELGIUM

**McCULLOCH OF AUSTRALIA PTY., LTD.**

P.O. BOX 223, SEVEN HILLS, N.S.W. 2147, AUSTRALIA