

ILLUSTRATED PARTS LIST

**THE PROFESSIONAL
PRO MAC™ 655**

CHAIN SAW



MODELS	SERIAL NUMBER PREFIX	MODELS	SERIAL NUMBER PREFIX
600118 B	11-		

McCulloch chain saws are identified by a model number (in this instance, 600118) followed by a suffix letter (A, B, C, etc.) stamped on the identification plate attached to the saw. Suffix letters denote variations in parts or assemblies in the manufacture of the saw.

Part numbers listed in this I.P.L. which have a suffix letter or letters following the description, indicate the part is used only on the model(s) identified by the letter or letters.

Part numbers and descriptions without suffix letter or letters apply to all versions of the chain saw model.

Part numbers which have one or more dots (.) preceding their descriptions may be ordered individually, but they are also included in the kit or assembly whose description begins directly above the dot(s).

Part numbers in this IPL which were not in the previous IPL covering these saws, are indicated by a dash (-) preceding the new part number.

The policy of McCulloch Corporation is one of continual improvement in design, manufacturing and engineering advancement wherever possible to assure still finer two-cycle power tools. Hence, specifications, equipment, colors, design and manufacturer's suggested list prices are subject to change without notice and McCulloch Corporation reserves the right to make such changes without prior notification or obligation to backfit or supply backfit components for units previously shipped from the factory.

June 1983

- CONTENTS -

	Page
Figure 1. General	2
Figure 2. Carburetor Assembly	4
Figure 3. CHAIN BRAKE Assembly.	5
Figure 4. Fan Housing & Fuel Tank Asys.	5
Figure 5. Powerhead & Oiler Assemblies.	6
Tools and Accessories.	8
Service Specifications	8



Pro Mac 655

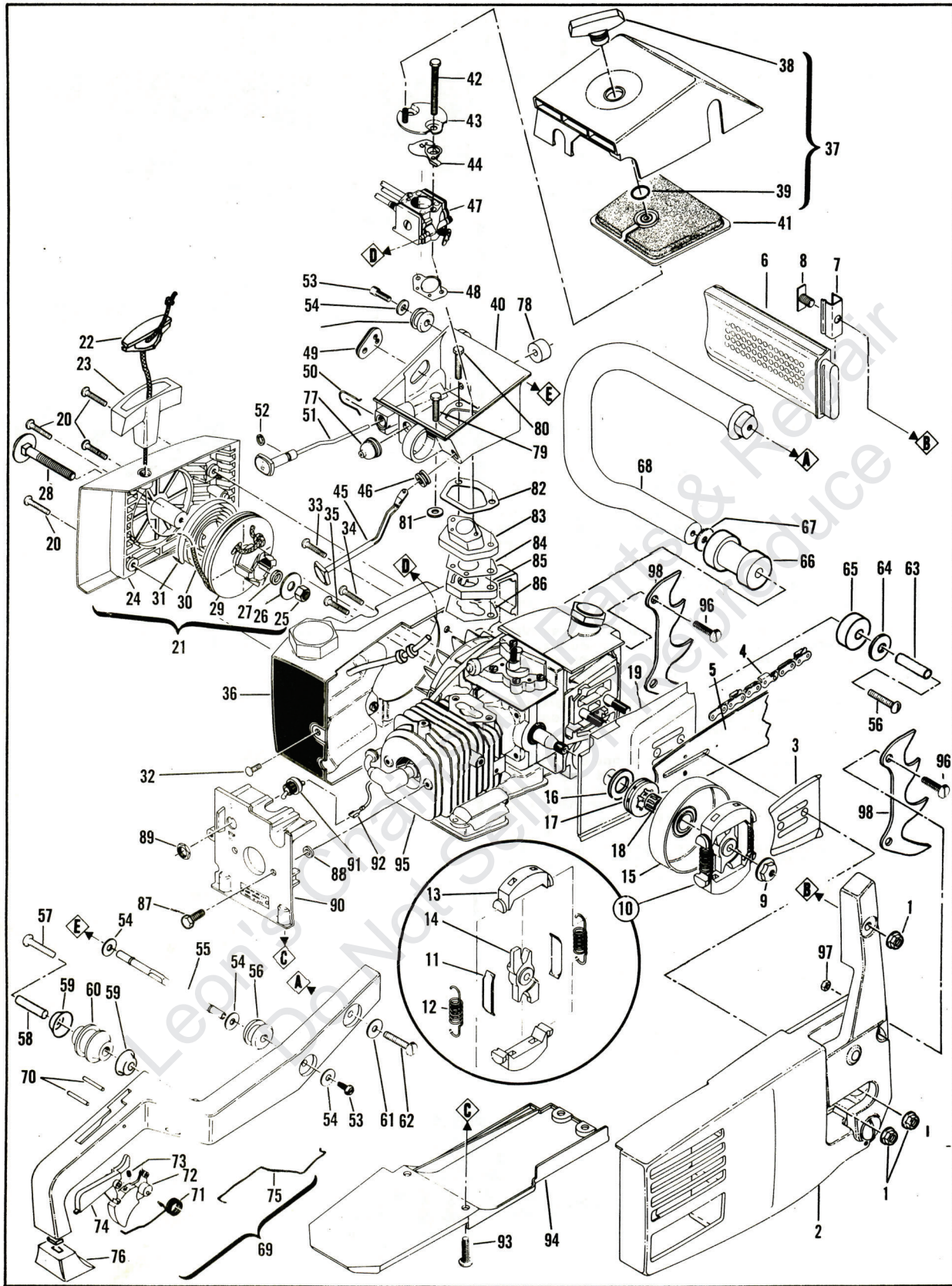
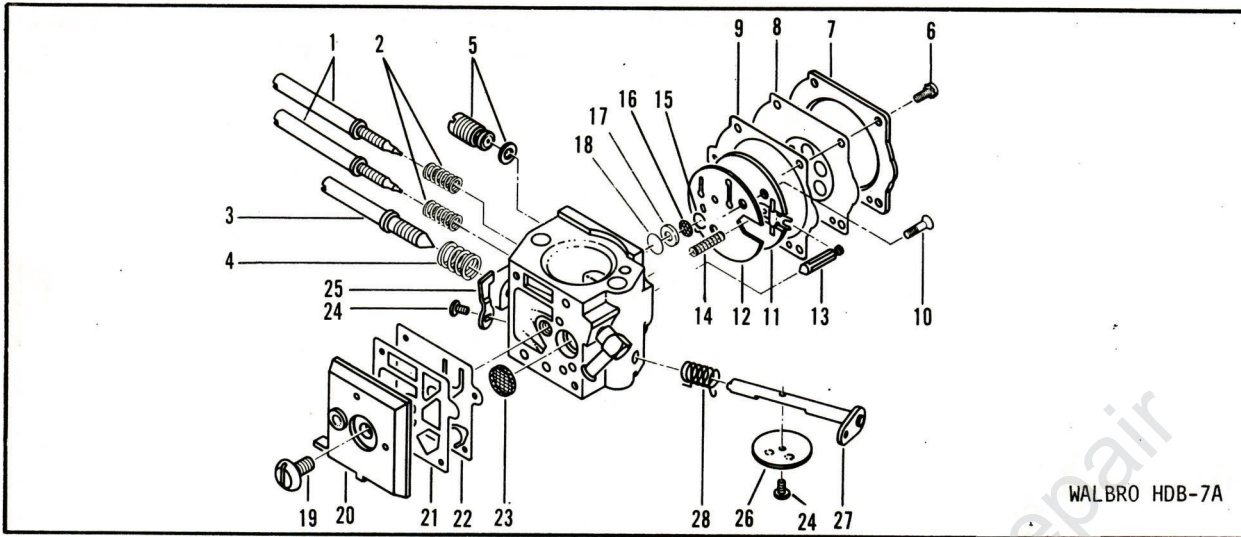


FIGURE 1. GENERAL

FIGURE 1. GENERAL

ITEM NO.	PART NUMBER	DESCRIPTION	UNITS PER ASY.	ITEM NO.	PART NUMBER	DESCRIPTION	UNITS PER ASY.
1	213169	Nut-Hx flange	3	49	91995A	Grommet-Carburetor needle	1
2		CHAIN BRAKE Assembly (Fig. 3)		50	93458	Clip-Oiler button	1
3	64325	Plate-Bar protector	1	51	92067A	Button/Rod Assembly-Oiler	1
4		Chain Assembly		52	105614	"O" Ring	1
5		Bar Assembly		53	216681	Screw-Skt hd M5 x 13	2
6	216179	Flag Brake Lever	1	54	110990	Washer	4
7	93721	Channel-Brake arm	1	55	93252A	Strut-Handle	1
8	93746	Stud-Brake	1	56	93253	Grommet-Strut	2
9	92457	Nut-Hx flange M10 x 1.25 LH	1	57	213059	Screw-Btn hd 1/4-14 x 2.5	2
10	214301	Clutch Assembly	1	58	92071	Spacer	1
11	64583	. Retainer-Clutch shoe	2	59	92066	Cup-Isolator	2
12	83223	. Spring-Clutch	2	60	92065	Isolator	1
13	67223	. Kit-Clutch shoe	1	61	216694	Washer-Plain	1
14	214300	. Rotor-Clutch	1	62	213058	Screw-Btn hd 1/4-14 x 1.75	1
15	95165	Drum/Sprocket Asy-7T .375P	1	63	92071	Spacer	1
16	86958	. Washer-Shim	1	64	111027	Washer-Plain	1
17	86951	. Sprocket-7T .375P	1	65	93913	Isolator	1
18	215720	Bearing-Needle	1	66	94150	Isolator	1
19	92354	Jacket-Cylinder	1	67	111027	Washer-Plain	1
20	216210	Screw-Skt hd M4 x 16 (SEMS)	4	68	91951	Frame	1
21	95358	Starter Assembly	1	69	94255	Handle/Boot Assembly	1
22	214699	. Insert-Starter	1	70	110994	. Pin-Roll	2
23	93137	. Handle-Starter	1	71	93771	. Spring-Trigger	1
24	95353	. Kit-Starter housing	1	72	91953A	. Trigger	1
25	111038	. . Nut-1/4-20	1	73	111013	. Screw-Set	1
26	95401	. . Washer-Starter	1	74	91955	. Release-Trigger	1
27	216589	. . Spacer-Starter	1	75	214504	. Rod-Throttle	1
28	215848	. . Step Bolt-Starter	1	76	93459	. Boot-Handle	1
29	216758	. Drum Assembly-Starter	1	77	69597	Boot-Control rod	1
30	87670	. . Rope-Starter	1	78	92161	Seal-Air box	1
31	87680	. Spring-Starter rewind	1	79	120037	Screw-Hx hd M5 x 25 (SEMS)	1
32	216673	Screw-Pn hd M5 x 14	1	80	120039	Screw-Hx hd M5 x 30 (SEMS)	2
33	216663	Screw-Fan housing (M5 x 40)	1	81	93460	Washer-Insulator	1
34	216662	Screw-Fan housing (M5 x 35)	1	82	94018	Gasket-Air box	1
35	216661	Screw-Fan housing (M5 x 20)	1	83	94017A	Insulator-Carburetor	1
36		Fan Housing/Fuel Tank Asy (Fig. 4)		84	91933	Gasket-Air box	1
37	216155	Cover Asy-Air cleaner	1	85	91934	Insulator-Air box	1
38	91991	. Knob-Air cleaner cover	1	86	92038	Gasket-Insulator	1
39	110565	. Ring-Retaining	1	87	120037	Screw-Hx hd M5 x 25 (SEMS)	2
40	95215	Kit-Air box	1	88	93460	Washer-Insulator	2
41	214226	. Filter-Air	1	89	104810	Nut-Hx 15/32-32	1
42	120004	Screw-Hx hd M5 x 56	2	90	92004	Shroud-Cylinder	1
43	91938	Bracket Assembly-Air cleaner	1	91	93890	Switch-Ignition	1
	94482	Choke and Rod Kit	1	92	92466	Wire Assembly-Switch	1
44	94151	. Choke-Carburetor	1	93	216673	Screw-Pn hd M5 x 14.25	2
45	94171	. Rod-Choke	1	94	214670	Shroud-Bottom	1
46	93261	Grommet-Choke	1	95		Powerhead/Oiler Asys (Fig. 5)	
47		Carburetor Assembly (Fig. 2)		96	216673	Screw-Pn hd M5 x 14.25	4
48	91924	Gasket-Carburetor	1	97	120044	Nut-Hx M5 lock	2
				98	93668	Spike	2

FIGURE 2. CARBURETOR ASSEMBLY.



WALBRO HDB-7A

ITEM NO.	PART NUMBER	DESCRIPTION	UNITS PER ASY.
	95631	Carburetor-Walbro HDB-7A	
1	③	. Needle-Hi speed and idle	2
2	③	. Spring-Needle adjust	2
3	③	. Screw-Idle	1
4	③	. Spring-Idle adjust	1
5		. Governor Asy (HDB-7A only)	1
6		. Screw-Metering cover	4
7		. Cover-Metering diaphragm	1
8	--②①	. Diaphragm Asy-Metering	1
9	②①	. Gasket-Metering diaphragm	1
10		. Screw-Circuit plate	2
11		. Plate Assembly-Circuit	1
12	②①	. Gasket-Circuit plate	1
13	-- ①	. Valve-Inlet needle	1
14	-- ①	. Spring-Metering lever	1

ITEM NO.	PART NUMBER	DESCRIPTION	UNITS PER ASY.
15	①	. Ring-Screen retaining	1
16	①	. Screen-Check valve	1
17	①	. Retainer-Check valve	1
18	①	. Valve-Check	1
19		. Screw-Fuel pump cover	1
20		. Cover-Fuel pump	1
21	②①	. Gasket-Fuel pump	1
22	--②①	. Diaphragm-Fuel pump	1
23	-- ①	. Screen-Inlet	1
24		. Screw-Valve	2
25		. Stop-Throttle	1
26		. Valve-Throttle	1
27		. Shaft Asy-Throttle	1
28		. Spring-Throttle return	1

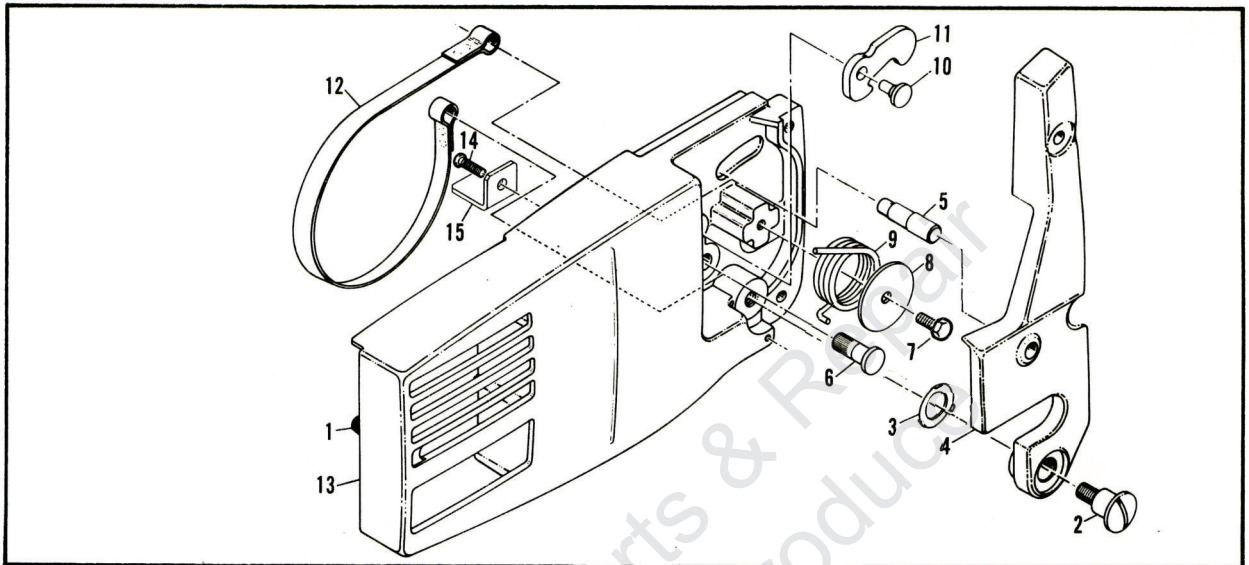
① Contained in Repair Kit, P/N 217075

② Contained in Gasket Kit, P/N 217077

③ Contained in Needle Kit, P/N 217076

NOTE: Items not listed with part numbers are shown for identification sequence purposes only. They are NOT available as service parts.

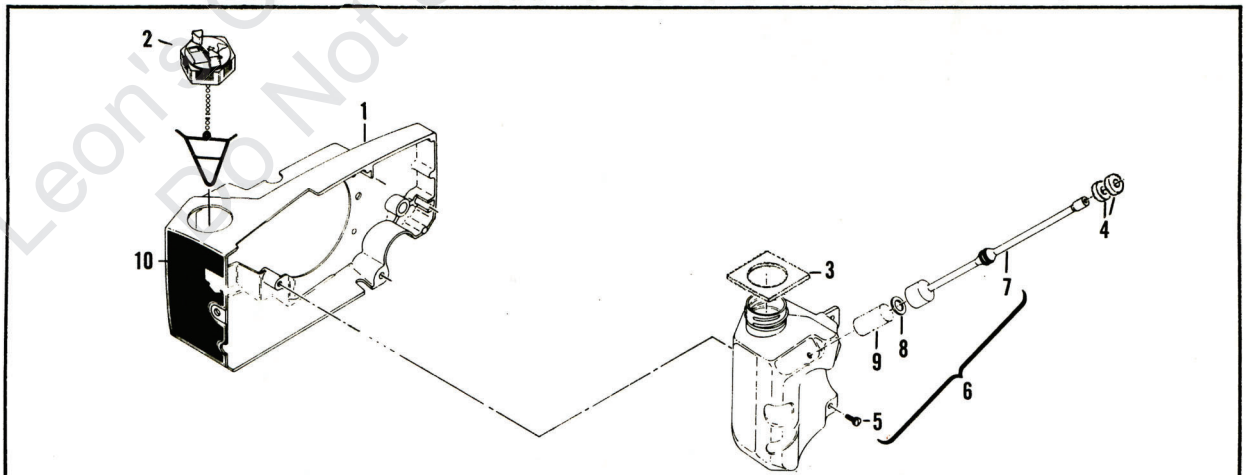
FIGURE 3. CHAIN BRAKE ASSEMBLY



ITEM NO.	PART NUMBER	DESCRIPTION	UNITS PER ASY.
	217007	CHAIN BRAKE Assembly	1
1	92086	. Snubber-Brake housing	1
2	216693	. Screw-Pivot	1
3	- -	. Washer-Special	1
4	217000	. Lever Asy-Brake actuator	1
5	214367	. . Pin Assembly-Roller	1
6	93082	. Pin-Band anchor	1
7	120019	. Screw-Hx hd M5 x 13	1

ITEM NO.	PART NUMBER	DESCRIPTION	UNITS PER ASY.
8	92134	. Retainer-Spring	1
9	92135	. Spring-Actuating	1
10	94144	. Pivot-Latch	1
11	94150	. Latch-Brake	1
12	93081	. Band-Brake	1
13	92084	. Housing-Brake	1
14	120001	. Screw-Pn hd M5 x 14.25	1
15	92178	. Stop-Chain	1

FIGURE 4. FAN HOUSING and FUEL TANK ASSEMBLIES



ITEM NO.	PART NUMBER	DESCRIPTION	UNITS PER ASY.
1	216154	Housing-Fan	1
2	216157	Cap-Fuel (vented)	1
3	93251	Seal-Fuel vent	1
4	92161	Seal-Air box	2
5	120068	Screw-Pn hd M4 x 12 (SEMS)	2

ITEM NO.	PART NUMBER	DESCRIPTION	UNITS PER ASY.
6	94901	Fuel Tank Assembly	1
7	94899	. Hose-Assembly-Fuel	1
8	100440	. . Washer-5/16	1
9	63932	. . Filter-Fuel	1
10	216168	Nameplate (PM 655)	1

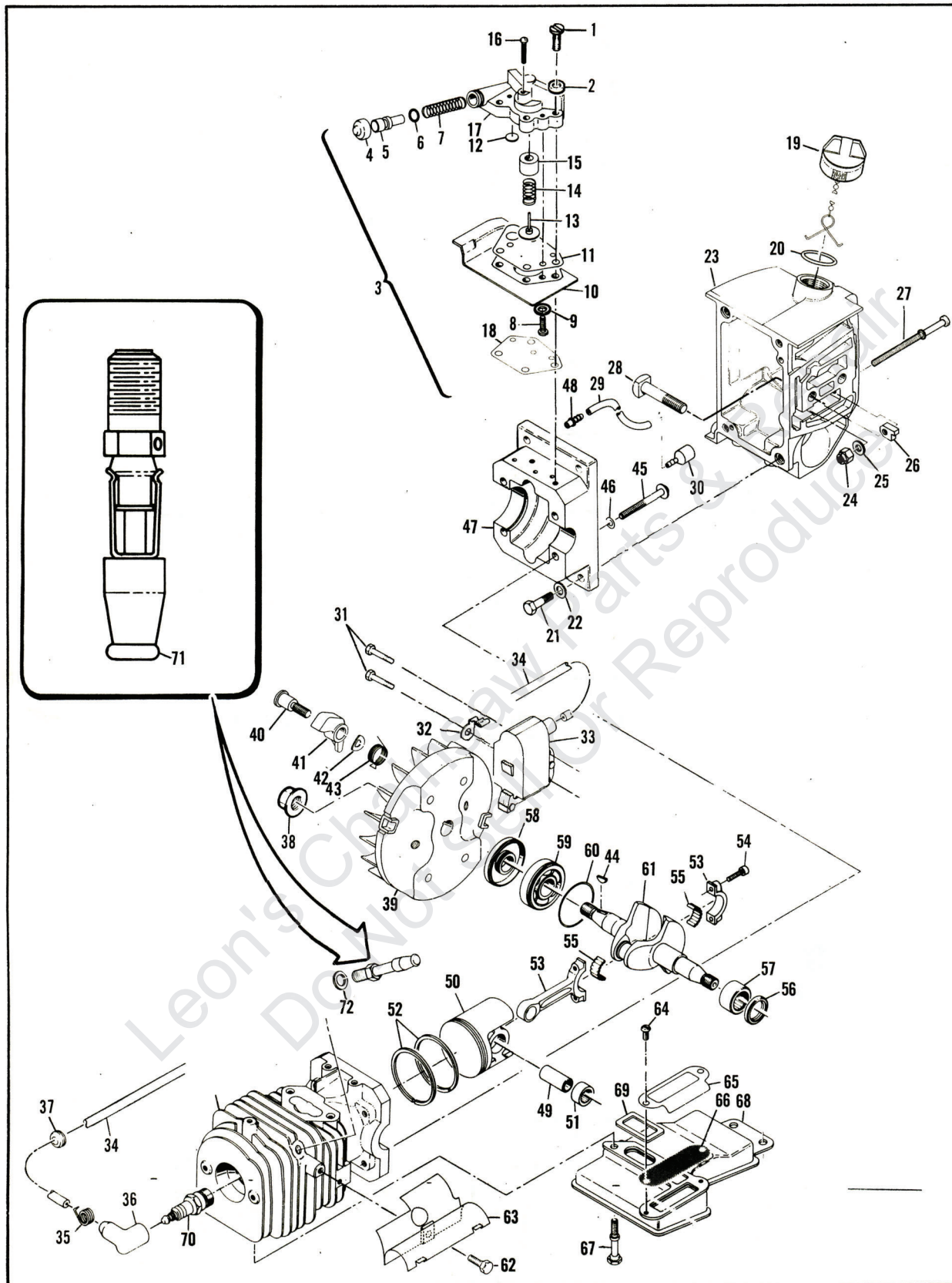


Figure 5. Powerhead and Oiler Assemblies

FIGURE 5. POWERHEAD and OILER ASSEMBLIES.

ITEM NO.	PART NUMBER	DESCRIPTION	UNITS PER ASY.	ITEM NO.	PART NUMBER	DESCRIPTION	UNITS PER ASY.
1	120036	Screw-Pn hd M4 x 16 (SEMS)	4	37	110995	. Grommet-Spark plug wire	1
2	67177	Washer-Insulating	4	38	94500	Nut-Hx flange M10	1
3	217208	Pump Assembly-Pulse oiler	1	39	95307	Flywheel/Pawl Assembly	1
4	215151	. Cap-Oil pump	1	40	95362	. Screw-Starter pawl	2
5	93933	. Plunger-Oil pump	1	41	95361	. Pawl-Starter	2
6	105614	. "O" Ring	1	42	213253	. Washer-Spring	2
7	66687	. Spring-Plunger	1	43	93144	. Spring-Starter pawl	2
8	110706	. Screw-Pn hd 8-18 x 1/2	3	44	100106	Key-Woodruff	1
9	216354	. Gasket-Washer	1	45	62106	Screw-Wsh hd 12-24 x 1 3/4	4
10	217218	. Cover-Diaphragm	1	46	111025	Washer-Sealing	4
11	216992	. Diaphragm-Oiler	1	47	94536	Cylinder/Crankcase Assembly	1
12	217217	. Valve-Oiler	1	48	92096	. Nipple-Oil line	1
13	91945	. Piston Assembly-Pulse	1	49	87710	Pin-Piston	1
14	94322	. Spring-Return	1	50	94130	Piston Assembly	1
15	91944	. Sleeve-Oil pump	1	51	111021	. Bearing-Needle	2
16	120092	. Screw-Pn hd M3.5 x 22	1	52	94132	. Ring Set-Piston	1
17	217202	. Body Assembly-Oil pump	1	53	85352	Connecting Rod Assembly	1
18	91950	Gasket-Oil pump	1	54	61627A	. Screw-Connecting rod	2
19	216156	Oil Cap Assembly	1	55	63225	. Roller-Needle (set of 20)	1
20	101148	"O" Ring	1	56	110260	Seal-Oil	1
21	120006	Screw-Hx hd M6.6 x 24	4	57	104357	Bearing-Needle	1
22	100004	Washer-Plain	4	58	67906	Seal-Oil	1
23	92077	Oil Tank Assembly	1	59	67905	Bearing-Ball	1
24	110950	. Nut-Lock	1	60	63404	Ring-Snap	1
25	102115	. Washer-Plain	1	61	217041	Crankshaft Assembly	1
26	91982	. Nut-Bar adjustment	1	62	102762	Screw-Hx hd 10-24 x 1/2	1
27	94362	. Screw-Bar adjustment	1	63	95439	Deflector Assembly-Exhaust	1
28	92459	. Bolt-Bar	2	64	120038	Screw-Pn hd M4 x 8	2
29	92616	Hose-Oil pickup	1	65	93481	Plate-Deflector	1
30	92465	Pickup-Oil	1	66	214205	Screen-Muffler	1
31	120037	Screw-Hx M5 x 25 (SEMS)	2	67	92458	Screw-Muffler	2
32	84686A	Strap-Ground	1	68	93603	Body/Cover Assembly-Muffler	1
33	95553	Ignition Assembly-Electronic	1	69	84007	Gasket-Muffler	1
34	95270	. Wire Assembly-Spark plug	1	70	214223	Spark Plug-AC CS 45 T	1
35	102556	. Connector-Spark plug	1	71	214304	Valve-DSP	1
36	95266	. Boot-Spark plug	1	72	214765	Washer-Valve	1

Leon's Copy
Do Not Sell

Pro Mac 655

Tools & Accessories.

PART NUMBER	DESCRIPTION
215432	Pressure Test Tool
63137	Adaptor-Exhaust
94415	Adaptor-Intake
110761	Plug-D.S.P.
501334	Ignition Tester
84223	Kit-Piston tools
501222	Piston Stop Tools
95218	Air Filter-Felt
94962	Scrench
214195	Gun-Lube (disposable)
214194	Gun-Lube (deluxe)
85702	Lubricant-Custom, 6 oz. can

PART NUMBER	DESCRIPTION
85703	Lubricant-Custom, 6 oz. cans, 1 6-pack
216107	Key-Socket 4 mm
95159	Allen Wrench-5 mm
69794	Locquic
110083	R.T.V. Sealant
94121	Kit-Carrying case 20"
214203	. Scabbard-20"
94367	Kit-Carrying case 16"
92896	. Scabbard-16"
214208	Kit-Spike

Service Specifications.

Spark Plug Gap	.025 inch (.63mm)
Lamination Gap	.011 to .015 inch (.28 to .38mm)
Timing	26° BTDC
Clutch Engagement Speed	2800 to 3000 rpm
Idle Speed	1800 to 2000 rpm
Torques:	
Connecting Rod Screws	65 to 70 pound x inches (7.3 to 7.9 N.m.)
Clutch Nut	160 to 170 pound x inches (18.1 to 19.2 N.m.)
Flywheel Nut	265 to 325 pound x inches (29.9 to 36.7 N.m.)

BAR and CHAIN COMBINATIONS.

ITEM NO.	PART NUMBER	DESCRIPTION	UNITS PER ASY.
94074	Bar-16" Speed Mac		
89502	Bar-16" Mac 10		
88167N	Chain-16" PM 370 G		
214231N	Chain-16" PGR 370 G		
89974N	Chain-16" SPR 370 G		
93778	Bar-20" Speed Mac		
89503	Bar-20" Mac 10		
88173N	Chain-20" PM 370 G		
214232N	Chain-20" PGR 370 G		

ITEM NO.	PART NUMBER	DESCRIPTION	UNITS PER ASY.
86846	Bar-24" Speed Mac		
89504	Bar-24" Mac 10		
88175N	Chain-24" PM 370 G		
94437N	Chain-24" PGR 370 G		
89981N	Chain-24" SPR 370 G		
86847	Bar-28" Speed Mac		
89505	Bar-28" Mac 10		
93552N	Chain-28" PM 370 G		
89984N	Chain-28" SPR 370 G		