

# ILLUSTRATED PARTS LIST

**THE PROFESSIONAL**

## PRO MAC™ 355, 365, 375 CHAIN SAW

PM 355		PM 365		PM 375	
MODELS	SERIAL NUMBER PREFIX	MODELS	SERIAL NUMBER PREFIX	MODELS	SERIAL NUMBER PREFIX
600113B	12-	600113C	12-	600114B	12-

McCulloch chain saws are identified by a model number (in this instance, 600113 ) followed by a suffix letter (A, B, C, etc.) stamped on the identification plate attached to the saw. Suffix letters denote variations in parts or assemblies in the manufacture of the saw.

Part numbers listed in this I.P.L. which have a suffix letter or letters following the description, indicate the part is used only on the model(s) identified by the letter or letters.

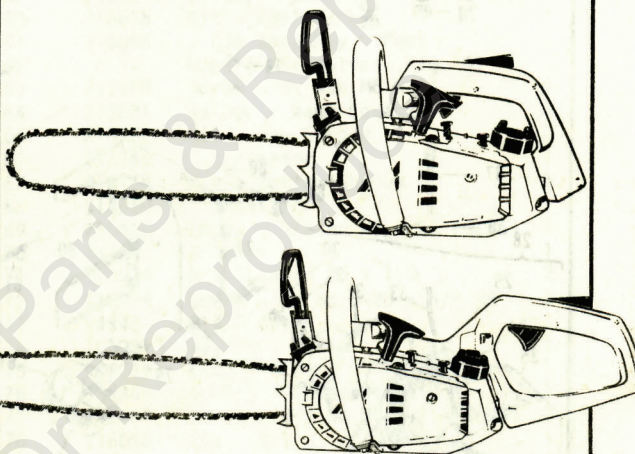
Part numbers and descriptions without suffix letter or letters apply to all versions of the chain saw model.

Part numbers which have one or more dots (.) preceding their descriptions may be ordered individually, but they are also included in the kit or assembly whose description begins directly above the dot(s).

Part numbers in this IPL which were not in the previous IPL covering these saws, are indicated by a dash (-) preceding the new part number.

The policy of McCulloch Corporation is one of continual improvement in design, manufacturing and engineering advancement wherever possible to assure still finer two-cycle power tools. Hence, specifications, equipment, colors, design and manufacturer's suggested list prices are subject to change without notice and McCulloch Corporation reserves the right to make such changes without prior notification or obligation to backfit or supply backfit components for units previously shipped from the factory.

**JUNE 1983**



- CONTENTS -

	Page
Figure 1. General . . . . .	2
Figure 2. CHAIN BRAKE Assembly . . . . .	4
Figure 3. Carburetor Assembly . . . . .	5
Figure 4. Powerhead Assembly . . . . .	6
Figure 5. Handle Assemblies . . . . .	8
Service Specifications . . . . .	9
Bar & Chain Combinations . . . . .	9
Tools and Accessories . . . . .	9

**McCULLOCH  
CORPORATION**

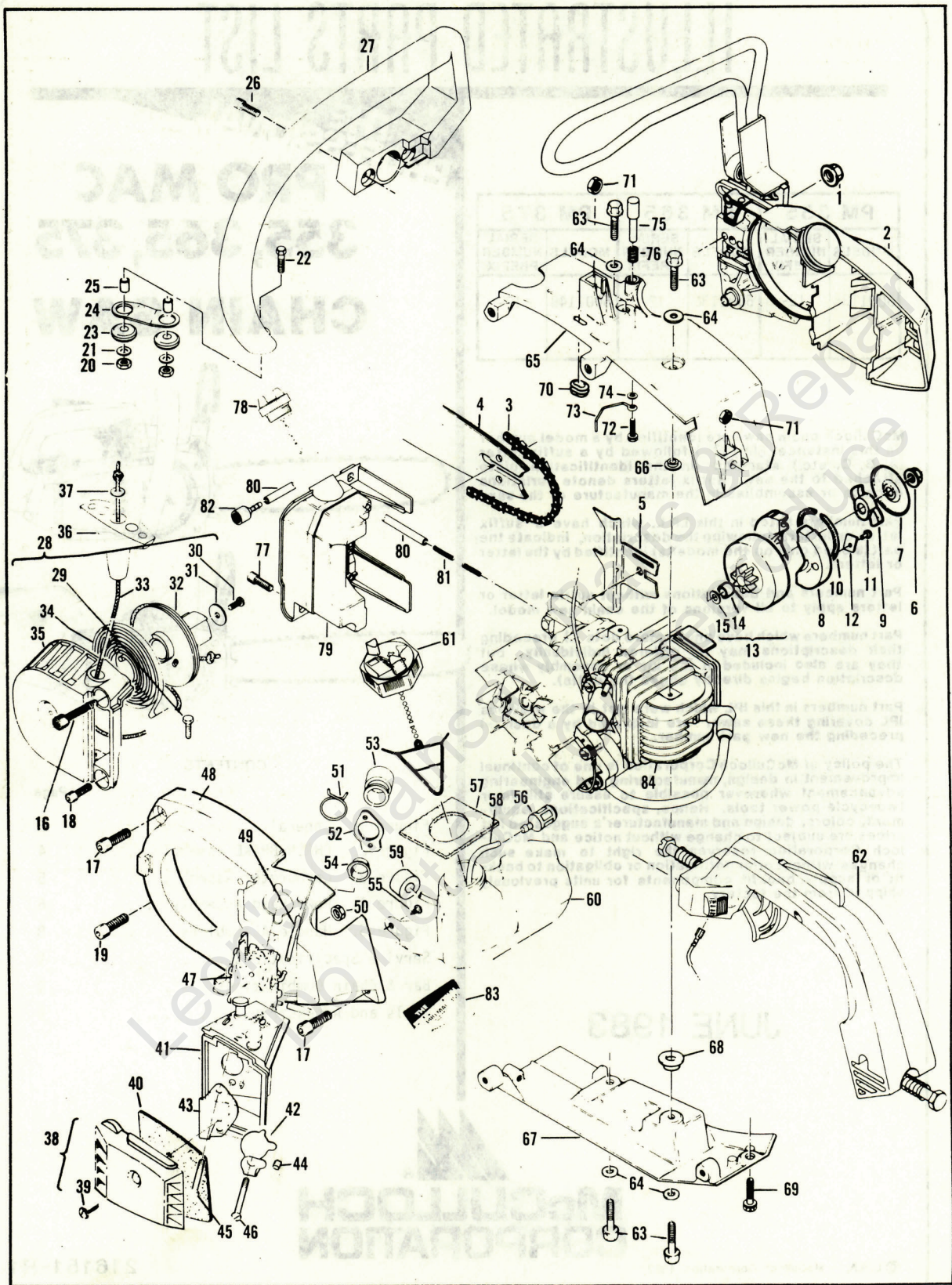
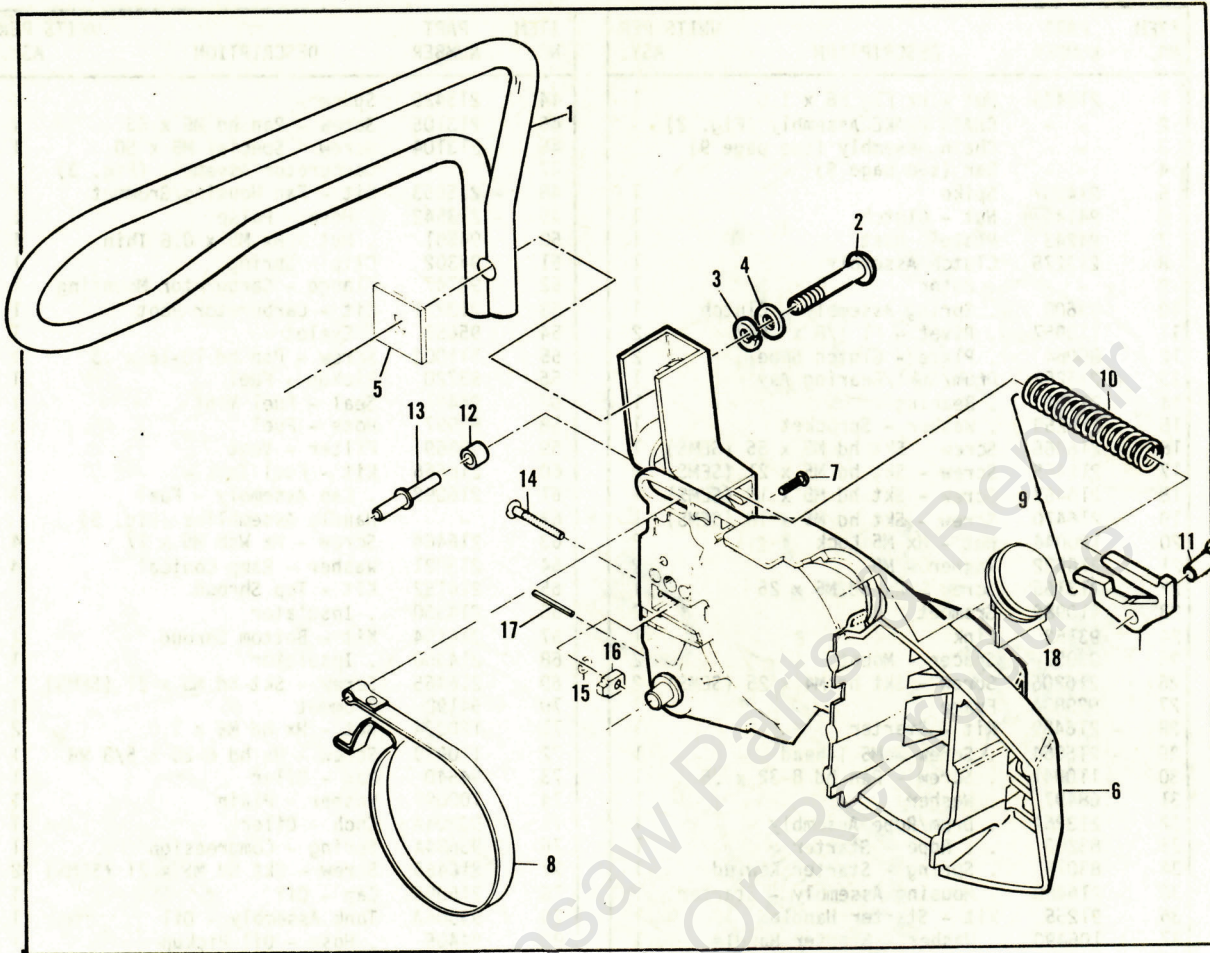


FIGURE 1. GENERAL

FIGURE 1. GENERAL

ITEM NO.	PART NUMBER	DESCRIPTION	UNITS PER ASY.	ITEM NO.	PART NUMBER	DESCRIPTION	UNITS PER ASY.
1	216476	Nut - Hx Flg M6 x 1.0	1	44	213420	Spacer	1
2	-	CHAIN BRAKE Assembly (Fig. 2)		45	213105	Screw - Pan hd M5 x 55	1
3	-	Chain Assembly (see page 9)		46	213104	Screw - Special M5 x 50	1
4	-	Bar (see page 9)		47	-	Carburetor Assembly (Fig. 3)	
5	214207	Spike	1	48	- 215563	Kit - Fan Housing/Grommet	1
6	94144	Nut - Clutch	1	49	- 213542	. Hose - Pulse	1
7	94243	Plate - Dust	1	50	94501	. Nut - Hx M5 x 0.8 Thin	1
8	213278	Clutch Assembly	1	51	94302	Clip - Spring	1
9	-	. Rotor	1	52	92747	Flange - Carburetor Mounting	1
10	93608	. Spring Assembly - Clutch	1	53	213211	Kit - Carburetor Boot	1
11	110957	. Rivet - Fl 1/8 x .547	2	54	95656	. Eyelet	1
12	85064	. Plate - Clutch Shoe	2	55	111002	Screw - Pan hd 10-16 x .5	1
13	- 215252	Drum/Spkt/Rearing Asy	1	56	93720	Pickup - Fuel	1
14	91222	. Bearing	1	57	94491	Seal - Fuel Vent	1
15	215259	. Washer - Sprocket	1	58	93997	Hose - Fuel	1
16	216466	Screw - Skt hd M5 x 56 (SEMS)	1	59	90869	Filter - Vent	1
17	216465	Screw - Skt hd M5 x 21 (SEMS)	2	60	216666	Kit - Fuel Tank	1
18	216467	Screw - Skt hd M5 x 19 (SEMS)	1	61	216098	. Cap Assembly - Fuel	1
19	216470	Screw - Skt hd M5 x 18 (SEMS)	1	62	-	Handle Assemblies (Fig. 5)	
20	120044	Nut - Hx M5 Lock	2	63	216464	Screw - Hx Wsh M6 x 17	4
21	216522	Washer - M5	2	64	213021	Washer - Ramp Conical	4
22	213165	Screw - Hx hd M5 x 25	1	65	214152	Kit - Top Shroud	1
23	110989	Grommet	2	66	214350	. Insulator	1
24	93152	Link	1	67	214154	Kit - Bottom Shroud	1
25	93057	Spacer - Mount	2	68	214350	. Insulator	1
26	216206	Screw - Skt hd M4 x 25 (SEMS)	2	69	216465	Screw - Skt hd M5 x 21 (SEMS)	1
27	92983A	Frame	1	70	94192	Grommet	1
28	- 216489	Kit - Starter	1	71	120034	Nut - Hx hd M6 x 1.0	2
29	- 216064	. Screw - M5 T-head	1	72	110999	Screw - Hx hd 6-20 x 5/8 WH	1
30	110041	. Screw - Pan hd 8-32 x .5	1	73	94540	Rod - Oiler	1
31	68497	. Washer	1	74	100001	Washer - Plain	1
32	213261	. Drum/Rope Assembly	1	75	93304A	Knob - Oiler	1
33	83203	. . Rope - Starter	1	76	93634A	Spring - Compression	1
34	83078	. Spring - Starter Rewind	1	77	216465	Screw - Skt hd M5 x 21 (SEMS)	2
35	- 216488	. Housing Assembly - Starter	1	78	216095	Cap - Oil	1
36	91255	Kit - Starter Handle	1	79	93506A	Tank Assembly - Oil	1
37	105490	. Washer - Starter Handle	1	80	94405	. Hose - Oil Pickup	1
38	215484	Cover Assembly - Air Filter	1	81	93998	. Spring - Oil Hose	1
39	216469	. Screw - Pan hd M5 x 16	1	82	92465	. Pickup - Oil	1
40	- 215456	Filter - Air	1	83	216105	Plate - Name (PM 355)	1
41	215482	Airbox Assembly	1	83	216149	Plate - Name (PM 365)	1
42	213411	Plate - Choke	1	83	216153	Plate - Name (PM 375)	1
43	215455	Bracket - Choke	1	84	-	Powerhead Assembly (Fig. 4)	

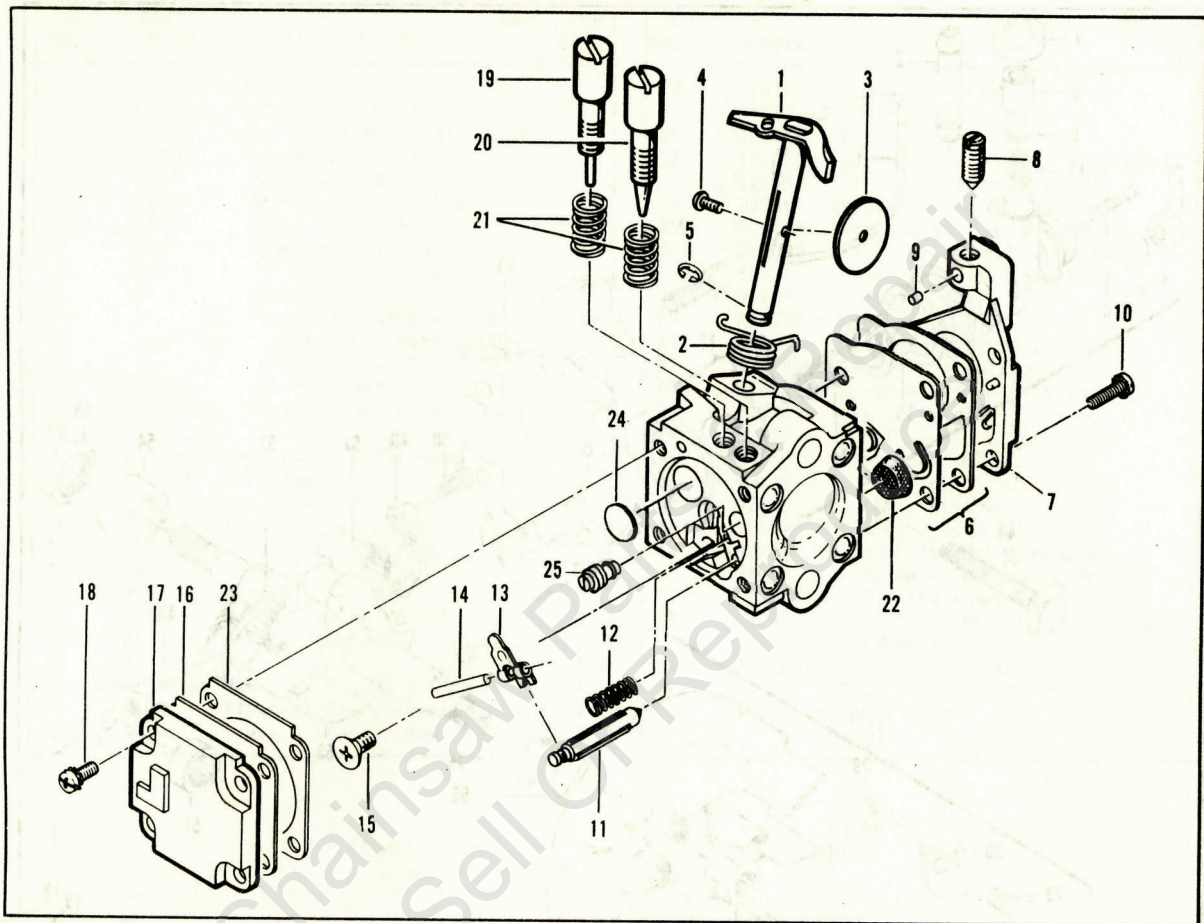
Figure 2. CHAIN BRAKE Assembly.



ITEM NO.	PART NUMBER	DESCRIPTION	UNITS PER ASY.
1	216527	Lever - Flag Brake	1
2	216276	Screw - Btn hd 1/4-20 x 13/16	1
3	216542	Washer - Lock	1
4	216541	Washer - Plain	1
5	216256	Nut - Brake Handle	1
6	216267	CHAIN BRAKE Assembly	1
7	216540	Screw - Fil hd 8-32 x 5/8	1
8	94709	Band - Brake	1
9	215758	Kit - Latch	1

ITEM NO.	PART NUMBER	DESCRIPTION	UNITS PER ASY.
10	- -	Spring - Compression	1
11	93602	Pivot - Latch	1
12	214368	Bearing - Roller	1
13	213907	Pin - Roller	1
14	213052	Screw - Adjusting	1
15	110907	Ring - Retaining	1
16	84929	Nut - Bar Adjusting	1
17	105673	Pin - Roll 3/32 x 9/16	1
18	93528A	Cover	1

Figure 3. Carburetor Assembly.



ITEM NO.	PART NUMBER	DESCRIPTION	UNITS PER ASY.
	94496	Carburetor Assembly (Zama)	1
1	-	. Shaft Asy - Throttle	1
2	-	. Spring - Throttle Return	1
3	-	. Plate - Throttle	1
4	-	. Screw - Plate (M3)*	1
5	-	. "E" Ring	1
6	-	②①. Kit - Diaphragm & Gaskets	1
7	-	. Cover Asy - Pump	1
8	-	. . Screw - Idle Speed	1
9	-	. . Insert - Friction	1
10	-	. . Screw - Pump Cover (M4)*	4
11	-	①. Needle - Inlet	1
12	-	①. Spring - Lever	1

ITEM NO.	PART NUMBER	DESCRIPTION	UNITS PER ASY.
13	-	①. Lever - Inlet Needle	1
14	-	①. Pin - Lever	1
15	-	①. Screw - Lever Pin (M3)*	1
16	-	②①. Diaphragm Asy - Metering	1
17	-	. Cover - Diaphragm	1
18	-	. Screw - Diaphragm Cover(M3)*	4
19	-	③. Screw - Idle Adjust	1
20	-	③. Screw - Main Adjust	1
21	-	③. Spring - Needle	2
22	-	①. Screen - Filter	1
23	-	②①. Gasket - Metering Diaphragm	1
24	-	①. Welch Plug	1
25	-	①. Orifice - Main Fuel	1

\* The "M" denotes metric screw size.

① Contained in Repair Kit, P/N -217081.

② Contained in Gasket/Diaphragm Kit, P/N -217089.

③ Contained in Needle Kit, P/N 216804.

NOTE: Items not listed with part numbers are shown for identification and disassembly sequence purposes only. They are NOT available as service parts.

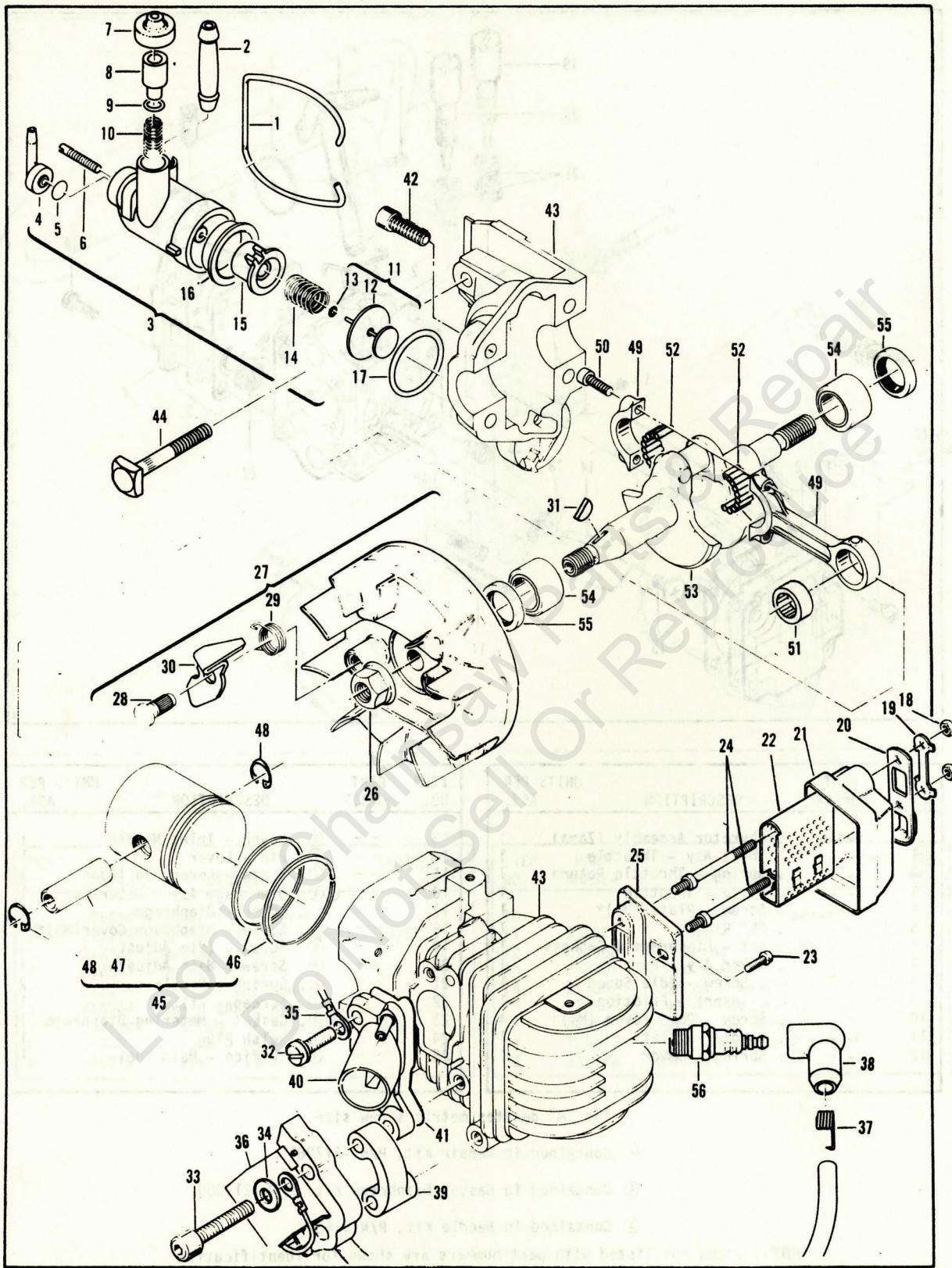


Figure 4. Powerhead Assembly

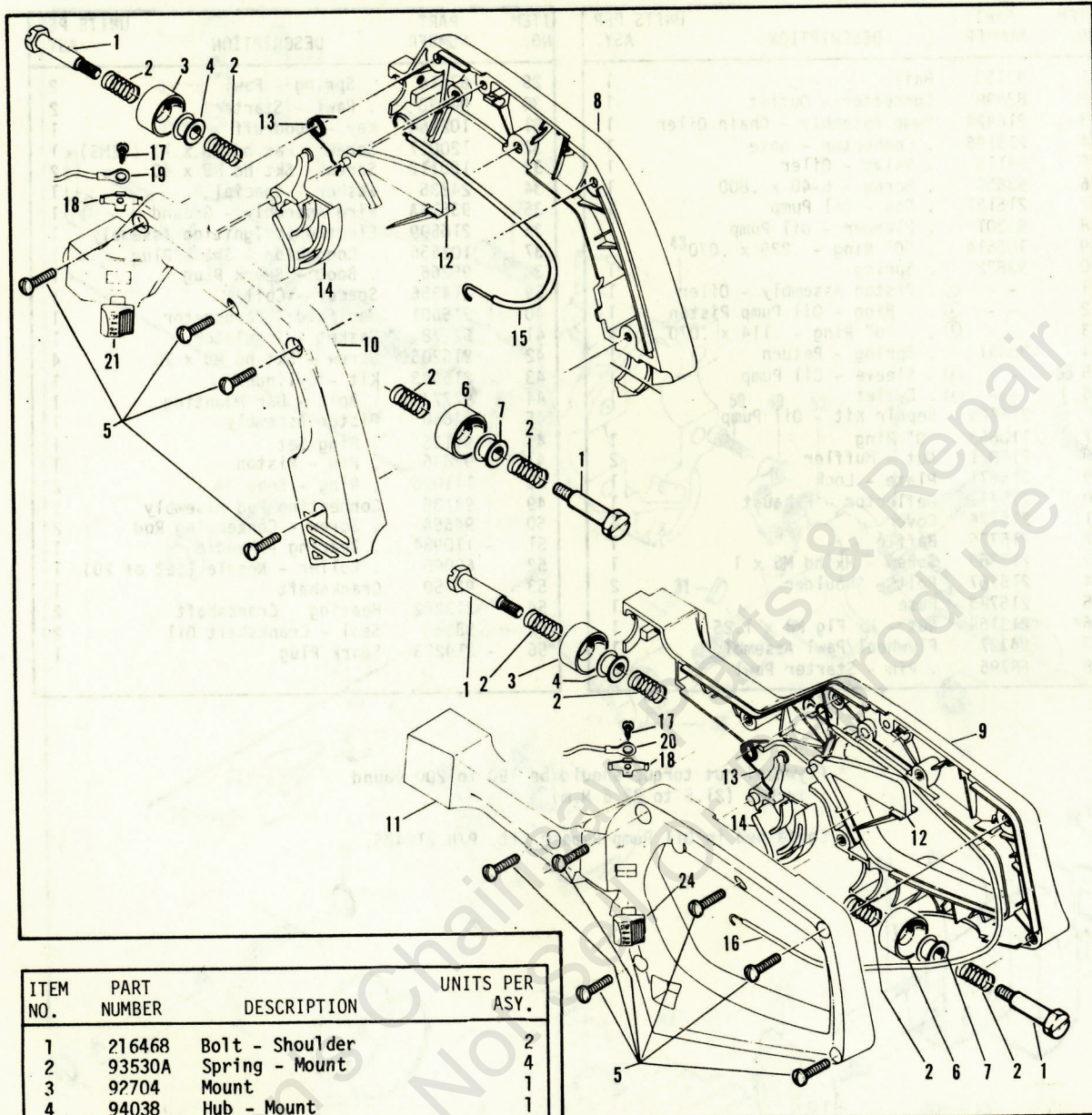
FIGURE 4. POWERHEAD ASSEMBLY.

ITEM NO.	PART NUMBER	DESCRIPTION	UNITS PER ASY.	ITEM NO.	PART NUMBER	DESCRIPTION	UNITS PER ASY.
1	93150	Bail	1	29	67814	. Spring - Pawl	2
2	83898	Connector - Outlet	1	30	94493	. Pawl - Starter	2
3	216424	Pump Assembly - Chain Oiler	1	31	102164	Key - Woodruff	1
4	215196	. Connector - Hose	1	32	120027	Screw - Pan hd M5 x 18 (SEMS)	1
5	94115	. Valve - Oiler	1	33	120112	Screw - Skt hd M5 x 40	2
6	93639	. Screw - 6-40 x .800	1	34	24236	Washer - Special	1
7	215151	. Cap - Oil Pump	1	35	93514A	Wire Assembly - Ground	1
8	93301	. Plunger - Oil Pump	1	36	216599	Electronic Ignition Assembly	1
9	105614	. "O" Ring - .239 x .070	1	37	102556	. Connector - Spark Plug	1
10	93632	. Spring	1	38	95266	. Boot - Spark Plug	1
11	- -	① . Piston Assembly - Oiler	1	39	214356	Spacer - Coil	1
12	- -	① . Ring - Oil Pump Piston	1	40	215601	Manifold - Carburetor	1
13	- -	① . "O" Ring - .114 x .070	1	41	92778	Gasket - Insulator	1
14	83891	. Spring - Return	1	42	216205	Screw - Skt hd M5 x 25	4
15	- -	① . Sleeve - Oil Pump	1	43	215943	Kit - Cylinder	1
16	- -	① . Eyelet	1	44	92777	. Bolt - Bar Mounting	1
	216426	Repair Kit - Oil Pump		45	94660	Piston Assembly	1
17	110653	"O" Ring	1	46	94136	. Ring Set	1
18	215871	Nut - Muffler	2	47	92836	. Pin - Piston	1
19	215471	Plate - Lock	1	48	111026	. Ring - Snap	2
20	215472	Deflector - Exhaust	1	49	94135	Connecting Rod Assembly	1
21	215774	Cover	1	50	94654	. Screw - Connecting Rod	2
22	215776	Baffle	1	51	110984	. Bearing - Needle	1
23	213369	Screw - Hx hd M6 x 1	1	52	68095	. Roller - Needle (Set of 20)	1
24	215757	Bolt - Shoulder	2	53	92750	Crankshaft	1
25	215773	Base	1	54	213282	Bearing - Crankshaft	2
26*	213169	Nut - Hx Flg M8 x 1.25	1	55	83859	Seal - Crankshaft Oil	2
27	94737	Flywheel/Pawl Assembly	1	56	214223	Spark Plug	1
28	68796	. Pin - Starter Pawl	2				

\* Flywheel nut torque should be 190 to 200 pound x inches (21.5 to 22.6 N.m)

① Contained in Oil Pump Repair Kit, P/N 216426.

FIGURE 5. HANDLE ASSEMBLIES.



ITEM NO.	PART NUMBER	DESCRIPTION	UNITS PER ASY.
1	216468	Bolt - Shoulder	2
2	93530A	Spring - Mount	4
3	92704	Mount	1
4	94038	Hub - Mount	1
	213230	Handle Assembly	
	213231	Handle Assembly	
5	111032	. Screw - Pan hd 10-26 x 5/8 A/R*	1
6	92704	. Mount	1
7	94038	. Hub - Mount	1
8	213229	. Handle - Right Half	1
9	213224	. Handle - Long Right	1
10	213228	. Handle - Left Half	1
11	213226	. Handle - Long Left	1
12	93310	. Trigger - Safety	1
13	93515	. Spring - Trigger	1
14	213232	. Trigger - Throttle	1
15	213234	. Wire Assembly - Throttle	1

ITEM NO.	PART NUMBER	DESCRIPTION	UNITS PER ASY.
16	213233	. Wire Assembly - Throttle	1
17	110706	. Screw - Pan hd 8-18 x 1/2	1
18	62451	. Contact - Ignition Switch	1
19	93505A	. Wire - Stop Switch (Pro Mac 355/365)	1
20	94039	. Wire - Stop Switch (Pro Mac 375)	1
21	68846	. Button - Stop Switch	1

① Used on Pro Mac™ 355 and 365 models.

② Used on Pro Mac™ 375 models.

\* Four used on Handle Assembly, P/N 213230.  
Six used on Handle Assembly, P/N 213231.



**BAR and CHAIN COMBINATIONS.**

PART NUMBER	DESCRIPTION
214235	Bar - 14" Mini Pro™ (Sprocket Tip)
91730	Bar - 14" Mini Mac™
- 90771	Bar - 14" Mac™ 6
214919N	Chain - 14" MP 370 GL

PART NUMBER	DESCRIPTION
214236	Bar - 16" Mini Pro™ (Sprocket Tip)
90772	Bar - 16" Mac™ 6
214925N	Chain - 16" MP 370 GL

**TOOLS and ACCESSORIES.**

PART NUMBER	DESCRIPTION
214207	Spike
94972	Scrench
93797	Wrench/Screwdriver
214194	Lubri-Gun
91226	Holder - Flywheel
94365	Kit - Carrying Case, 14"
92977	. Scabbard, 14"
94364	Kit - Carrying Case, 16"
214202	. Scabbard, 16"
85702	Lubricant - Custom, 6-oz. can
85703	Lubricant - Custom, 6-oz. cans, 1-6 pack
- 216113	Key - Socket 3mm
216107	Key - Socket 4mm

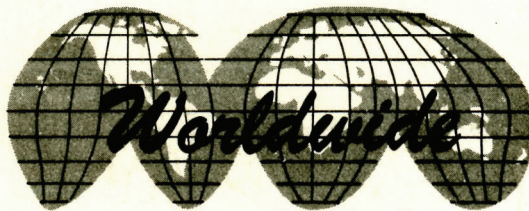
PART NUMBER	DESCRIPTION
214212	Kit - Tool
- 216805	Kit - Spark Arrester Screen
94416	Adaptor - Intake (Cylinder)
94415	Adaptor - Intake (Air Box)
68917	Adaptor - Exhaust
85229	Kit - fuel Tank Plug
215432	Tool - Pressure Test
63094	Driver - Wrist Pin
501334	Tester - Ignition
67537	Loctite
69794	Locquic
110083	R.T.V. Sealant
110706	Tool - Handle/Throttle Screw

**SERVICE SPECIFICATIONS.**

Displacement . . . . .	35cc (2.1 cu. in.)
Bore and Stroke . . . .	38 mm x 30.5 mm (1.5 in. x 1.201 in.)
Bearings . . . . .	Main: Needle
Intake System . . . . .	3rd Port
Fuel Tank Capacity . . .	330 cc (11.2 oz.)
Chain Oiler Capacity . .	100 cc (3.4 oz.)
Clutch Engaging Speed.	3800 R.P.M
Idle Speed . . . . .	2700 to 2900 R.P.M
Ignition . . . . .	Electronic
Carburetor . . . . .	Diaphragm Type, 2-needle Adjustable

Fuel Type . . . . .	Regular Grade Leaded
Fuel/Oil Mixture . . . .	40:1 w/McCulloch Oil
Filtering System:	
Fuel: . . . . .	Enclosed Felt Fuel Filter
Air: . . . . .	Felt Air Filter
Lamination Gap . . . . .	0.3 to 0.4 mm (.011 to .015 in.)
Timing . . . . .	26 B.T.D.C.
Piston Rings . . . . .	2 Cast Iron Compression
Weight: PM 355 . . . . .	12.1 lbs.(5.5 kg)
PM 365 . . . . .	12.3 lbs.(5.6 kg)
PM 375 . . . . .	12.9 lbs.(5.8 kg)

**McCULLOCH**



● MANUFACTURING ● SALES ● SERVICE ●

**McCULLOCH**

P.O. Box 92180, Los Angeles, CA 90009

Copyright - McCulloch, 1982

To answer service-related questions and to solve common consumer problems quickly, we invite you to call this toll-free hot-line:

Arizona residents please call collect (602)453-3681

**(800) 423-6302**

Leon's Chair Saw Parts & Repair  
Do Not Sell or Reproduce