

# ILLUSTRATED PARTS LIST

MODEL NAMES	SERIAL NUMBER PREFIX	MODELS
Pro Mac 10-10S	11-	600111-02
Pro Mac 10-10S	11-	600111-03
Pro Mac 10-10S	11-	600111-04
Pro Mac 10-10S	11-	600111-05
Pro Mac 10-10S	11-	600111-06

McCulloch products are identified by a model number (in this instance 6000111) followed by a suffix number (03 or 04). Suffix numbers denote variations in parts or assemblies used in the manufacture of this product.

Illustrated Parts Lists (IPLs) contain a PART NUMBER, DESCRIPTION, UNITS per assembly and STOCKING CODE for each part. Stocking Codes are:

- A - Dealer Stocked. Fast to medium moving part.
- B - Distributor Stocked. Medium to slow moving part
- C - Factory Stocked. Slow moving part.
- T - McCulloch service tool.
- N - No longer available.
- R - Replaced Part.

**NOTE:** The following explains symbols/footnotes in this IPL.

(-) A dash preceding a PART NUMBER indicates that it is a new part number, different from the one listed in the previous IPL for this unit.

(.) One or more dots (. Spring-Starter) preceding a part DESCRIPTION indicates the part is included in the kit or assembly described directly above the dot(s).

(- - -) If four dashes appear in place of a PART NUMBER, the part is not available individually but is included in the next higher assembly or subassembly.

① ② Circled numbers preceding a DESCRIPTION footnote the part or assembly to additional information on the page.

(\*) An asterisk draws attention to general information.

The policy of McCulloch Corporation is one of continual improvement in design, manufacturing and engineering advancement wherever possible to assure still finer power tools. Hence, specifications, equipment, colors, design and manufacturer's suggested list prices are subject to change without notice. McCulloch Corporation reserves the right to make such changes without prior notification or obligation to backfit or supply backfit components for units previously shipped from the factory.

**THE  
PROFESSIONAL  
PRO MAC 10-10S**



## CONTENTS

	PAGE
FIGURE 1 General Assembly . . . . .	2
FIGURE 2 Chain Brake Assembly . . . . .	4
FIGURE 3 Fan Housing / Starter Assembly . . . . .	5
FIGURE 4 Fuel Tank Assembly . . . . .	6
FIGURE 5 Carburetor Assembly . . . . .	7
FIGURE 6 Powerhead Assembly . . . . .	8
FIGURE 7 Specifications . . . . .	10
FIGURE 8 Tools and Accessories . . . . .	10
FIGURE 9 Bar /Chain /Chain Sharpening Tools . . . . .	11

**AUGUST 1992**



**McCULLOCH  
CORPORATION**

P.O. Box 11990 • Tucson, Arizona 85734

216062-01

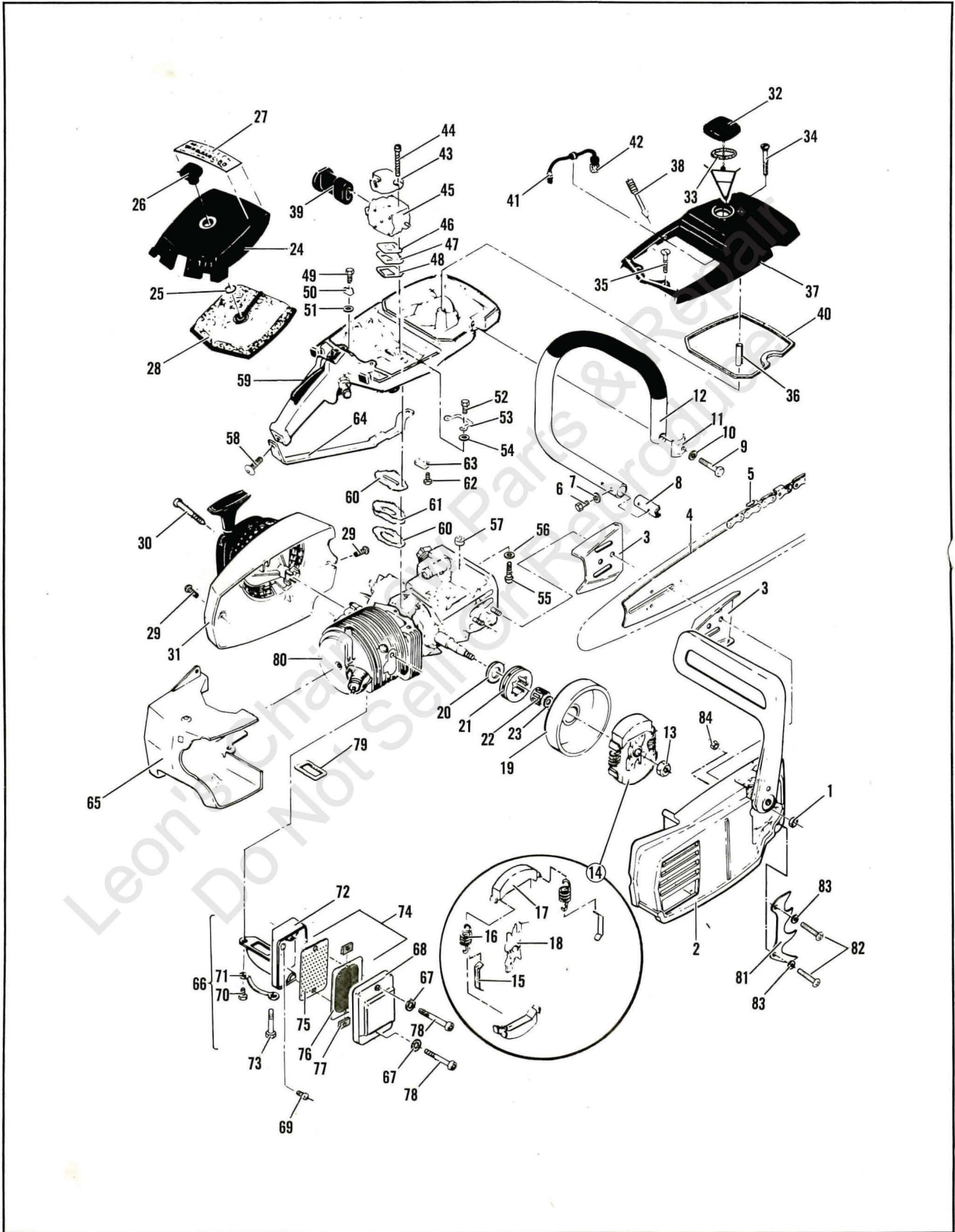


FIGURE 1 GENERAL ASSEMBLY

ITEM NO.	STK. CODE	PART NUMBER	DESCRIPTION	UNITS PER ASY.
1	A	216640	Nut, Flange 5/16-24	2
2		<b>Figure 2</b>	<b>Chain Brake Assembly</b>	
3	A	64325	Plate, Bar Guide	1
4		<b>Figure 9</b>	<b>Bar Assembly</b>	
5		<b>Figure 9</b>	<b>Chain Assembly</b>	
6	A	216677	Screw-Hx 10-24 x .875 SL	2
7	B	100352	Washer-#10 Plain	2
8	A	89727	Retainer-Frame	1
9	A	216638	Screw-Hx Hd 1/4-20 x 1.50	1
10	B	216542	Washer-Lock .250	1
11	A	216639	Clamp-Frame	1
12	A	214549	Frame & Grip Assembly	1
13	B	223060	Nut-Hx (L.H.)	1
14	A	214301	Clutch Assembly	1
15	A	64583	. Retainer, Clutch Spring	2
16	A	83223	. Spring, Clutch	2
17	B	67233	. Kit-Clutch Shoe	1
18	A	214300	. Rotor, Clutch	1
19	A	95165	Drum & Spkt Assembly 7T (.375)	1
20	A	86958	. Washer, Shim	1
21	C	86961	. Sprocket-7 T .375 pitch	1
22	A	215720	Kit-Bearing/Washer	1
23	A	86958	. Washer-Shim	1
24	B	91543	Cover Asy-Air Cleaner	1
25	B	110565	. Ring-Retaining	1
26	B	68529	. Knob-Cover	1
27		216054-01	Label-Logo	1
28	A	216685	Filter, Air	1
29	A	217935	Screw-Pn 10-24x.50 TORX	3
30	A	216624	Screw-Ov Set 8-32 x 2.26	3
31		<b>Figure 3</b>	<b>Fan Housing/Starter Asy.</b>	
32	A	216053	Cap Assembly, Fuel W/Retainer	1
33	A	69767	. Gasket	1
34	B	216678	Screw-Pn 12-24 x 2.375	1
35	C	101986	Screw-Fuel Tank Cover	1
36	C	87840	Spacer-Fuel Tank Cover	1
37	C	87677	Cover-Fuel Tank	1
38	B	87932	Screw-Idle Adjustment	1
39	B	87665	Boot-Carburetor	1
40	A	69345	Gasket-Cover	1
41	A	215708	Hose Assembly-Fuel	1
42	A	215714	. Pickup Assembly-Fuel	1

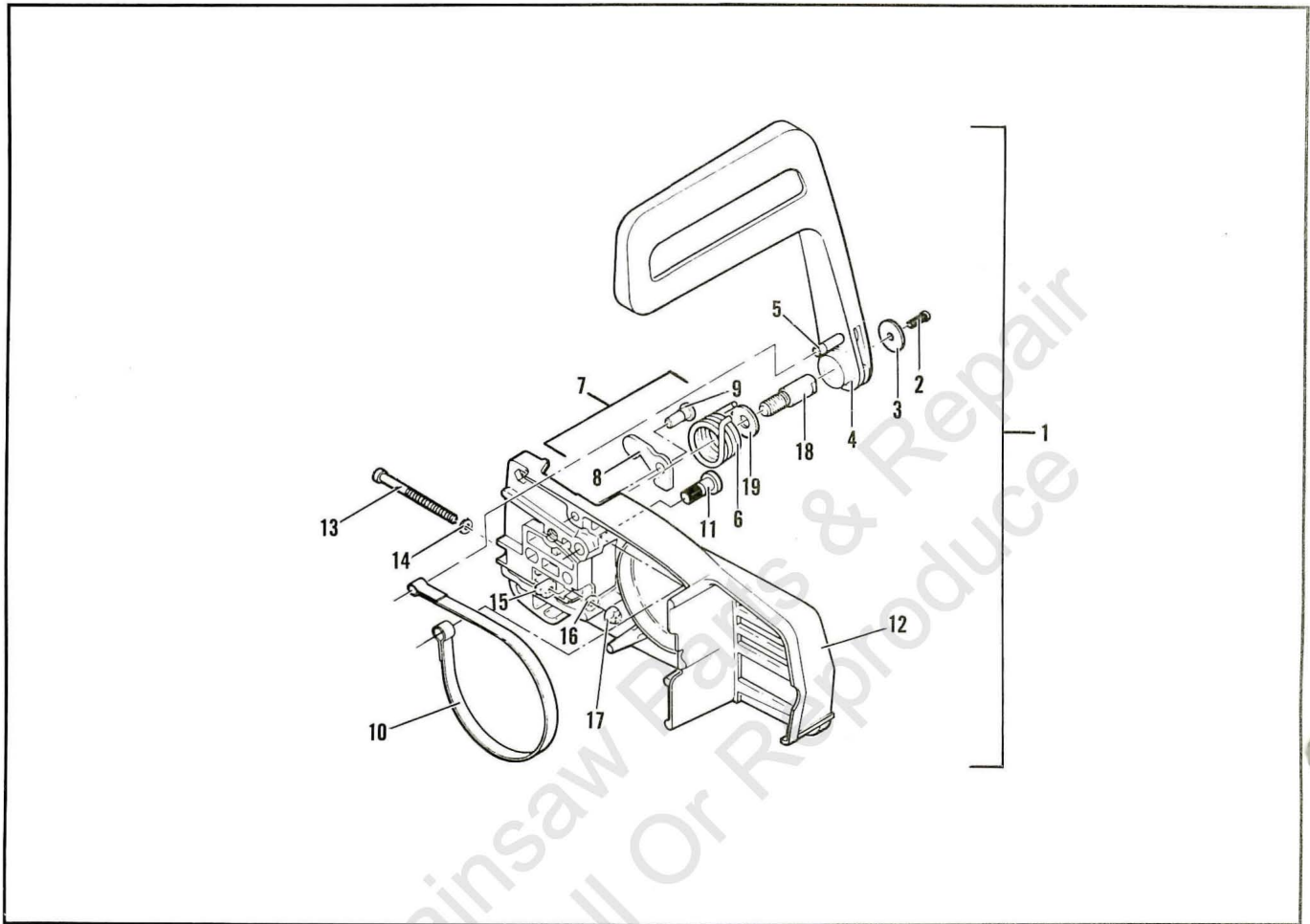
ITEM NO.	STK. CODE	PART NUMBER	DESCRIPTION	UNITS PER ASY.
43	B	69952	Bracket-Air Cleaner	1
44	A	103357	Bolt-Hx Hd 10-24 x 2.25	2
45		<b>Figure 5</b>	<b>Carburetor Assembly</b>	
46	A	86189	Gasket-Carburetor	1
47	B	84078	Spacer-Carburetor	1
48	A	84081	Gasket-Carb Spacer	1
49	B	110570	Screw-Hx Hd 12-24 x 1.375	2
50	A	68582	Plate-Lock	1
51	A	102115	Washer-Plain	1
52	A	110568	Screw-Hx Hd 12-24 x 1.12	1
53	A	69516	Plate-Lock	1
54	B	100352	Washer-#10 Plain	1
55	A	110713	Screw-Skt Hd 10-24 x .88	1
56	A	100003	Washer-#10 Plain	1
57	A	69772	Spacer-Fuel Tank	1
58	A	216632	① Screw-Pn Hd 10-24 x 1.25	1
	C	217938	③ Screw-Tr. 10-24 x 1.25	1
59		<b>Figure 4</b>	<b>Fuel Tank Assembly</b>	
60	A	84082	Gasket-Fuel Tank	2
61	B	84079	Insulator-Fuel Tank	1
62	A	216680	Screw-Hx 12-24 x .625	1
63	A	68508	Plate-Lock	1
64	B	85007	Brace-Frame	1
65	B	214702	Shroud-Cylinder	1
66	A	93992	Kit-Muffler Lvr Side	1
67	A	216635	. Washer-Plain	2
68	B	83966	. Cover Assembly-Muffler	1
69	A	217935	. Screw-Pn Hd 10-24 x .50 TORX	1
70	A	110529	. Screw-Hx 10-24 x .50	1
71	A	67922	. Plate-Lock	1
72	B	83105	. Kit-Body/Duct Assembly	1
73	A	68187	. Screw-Hx 10-24 x 1.38	1
74	B	223451	Kit-Baffle Screen	1
75	C	223403	② . Baffle Spark-Arrestor	1
76	C	223405	② . Screen Asy Spark Arrestor	1
77	-	- - -	. Clip-S/Arrestor Baffle	1
78	A	101563	. Screw-Skt 10-24 x 1.25	2
79	A	84007	Gasket-Muffler	1
80		<b>Figure 6</b>	<b>Powerhead Assembly</b>	
81	A	93668	Spike	1
82	A	213042	Screw, Skt 10-24x.625	2
83	A	216683	Washer, Special 10	2
84	A	216682	Nut, Hex Lock 10-24	2

- ① Used on some earlier models
- ② Item 75 (Baffle) can only be used with item 74 (Screen and CANNOT be used on earlier production models. For earlier models order P/N 223451 (Kit). However item 76 (Screen) can be used on earlier models equipped with baffle P/N 85152.
- ③ Used on current models.

<b>LOCTITE KIT</b>	
PART NUMBER	DESCRIPTION
322235	LOCTITE KIT
322236	. RETAINING COMPOUND 620 (10 ml)
322237	. THREAD LOCKER 242 (10 ml)
322238	. GASKET ELIMINATOR 518 (50 ml)
322239	. BLACK MAX ADHESIVE 380 (01 oz)

KIT INCLUDES: LOCTITE PRODUCT GUIDE, POCKET GUIDE AND MSDS DATA SHEETS.

# FIGURE 2 CHAIN BRAKE ASSEMBLY

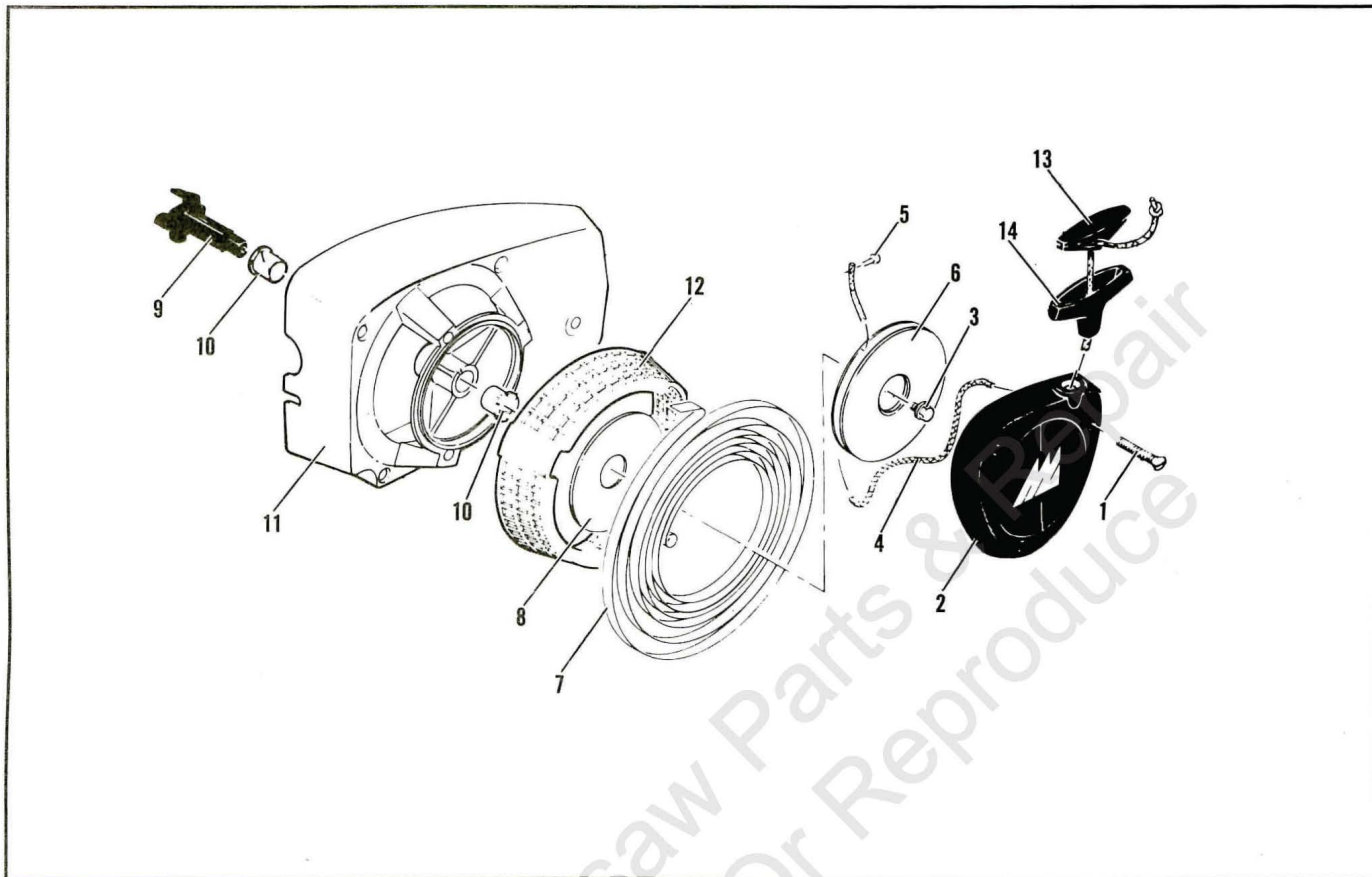


ITEM NO.	STK. CODE	PART NUMBER	DESCRIPTION	UNITS PER ASY.
1	A	217694	Chain Brake Assembly	1
2	A	216634	.. Screw-Pn Hd 10-24 x .50	1
3	B	216633	.. Washer-Plain .210 I.D.	1
4	B	215911	.. Lever Assembly	1
5	A	214366	.. Pin Assembly-Roller	1
6	B	93085	.. Spring-Brake	1
7	A	222478	.. Kit-Latch-Pivot	1
8	---	①	.. Latch	1
9	---	①	.. Pivot-Latch	1
10	A	93081	.. Band Brake	1

ITEM NO.	STK. CODE	PART NUMBER	DESCRIPTION	UNITS PER ASY.
11	B	93082	.. Pin-Band Anchor	1
12	---	---	.. Housing Assembly-Brake	1
13	A	216636	.. Screw-Fil 10-24 x 2.75	1
14	A	216635	.. Washer-Plain .203 I.D.	1
15	A	61705	.. Nut-Blade Adjust	1
16	A	100002	.. Washer-#10 Plain	1
17	A	102067	.. Nut-Hx Lock 10-24	1
18	B	91246	.. Pin-Lever Pivot	1
19	B	91245	.. Washer-Thrust	1

① If replacement of pivot or latch is necessary, you MUST order P/N 222478 (item 7) and replace both.

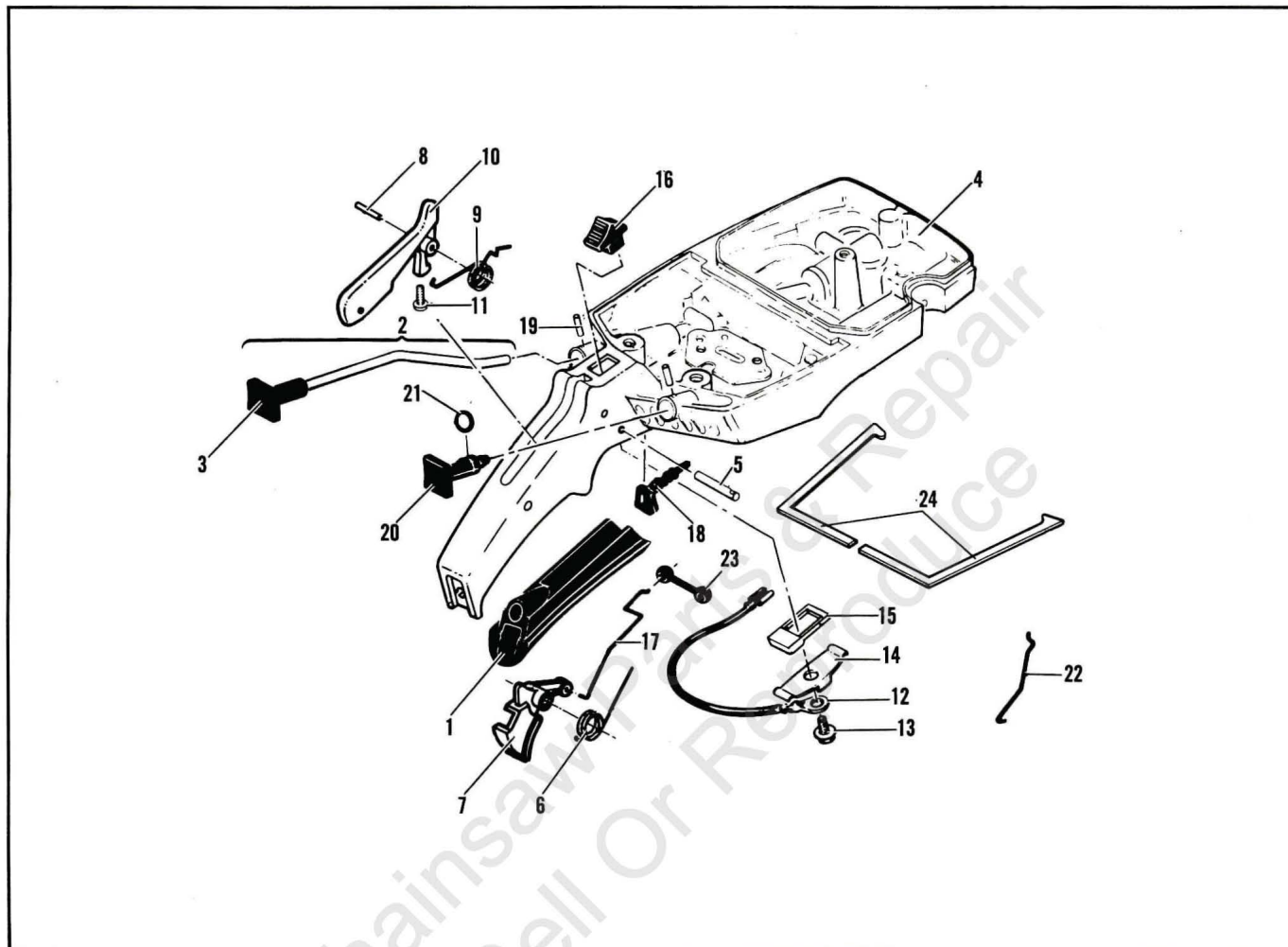
# FAN HOUSING / STARTER ASSEMBLY **FIGURE 3**



ITEM NO.	STK. CODE	PART NUMBER	DESCRIPTION	UNITS PER ASY.
	B	216050	Fan Housing & Starter Asy.	1
1	A	- 216623	. Screw-Oval 8-32 x 1.12	3
2	B	91084	. Cover, Starter	1
3	A	- 217935	. Screw-Tr 10-24 x .50 TORX	1
4	A	87670	. Rope-Starter	1
5	A	110470	. Rivet-Rope	1
6	A	85122	. Drum Assembly-Starter	1
7	B	87680	. Spring-STR/Rewind	1

ITEM NO.	STK. CODE	PART NUMBER	DESCRIPTION	UNITS PER ASY.
8	A	86053	. Shield-Starter Spring	1
9	B	83748	. Shaft -Starter	1
10	A	57535	. Bushing-Starter	2
11	B	223953	. Kit-Fan Housing/Guard	1
12	A	214192	.. Guard-Sawdust	1
13	A	214699	Insert-Handle	1
14	A	93137	Handle-Starter	1

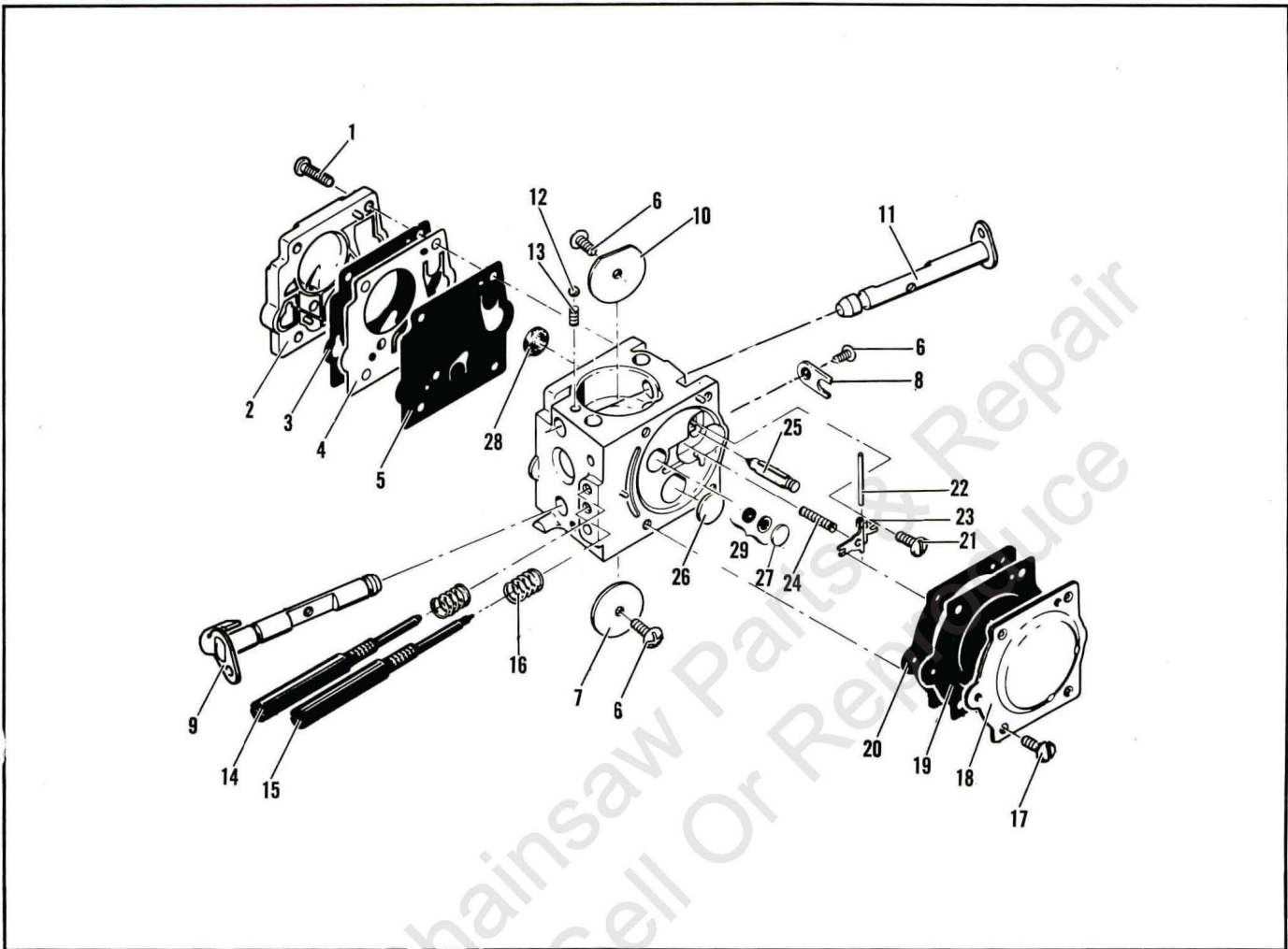
# FIGURE 4 FUEL TANK ASSEMBLY



ITEM NO.	STK. CODE	PART NUMBER	DESCRIPTION	UNITS PER ASY.
1	A	89320	Insert-Handle Grip	1
2	B	216126	Button/Rod Assembly-Oiler	1
3	B	95615	. Button-Oiler	1
4	B	216127	Tank Asy-Fuel	1
5	C	110378	. Pin-Roll .196 x .937	1
6	A	92152	. Spring-Trigger	1
7	A	214679	. Trigger-Throttle	1
8	C	105654	. Pin-Roll .131 x .875	1
9	B	92154	. Spring-Trigger Release	1
10	B	94275	. Release Assembly-Trigger	1
11	A	110713	.. Screw-Skt 10-24 x .88	1
12	A	214692-01	. Wire Asy-Switch	1

ITEM NO.	STK. CODE	PART NUMBER	DESCRIPTION	UNITS PER ASY.
13	B	111012	. Screw-Pn Hd 4-40 x .31	1
14	B	62451	. Contact-Ign Switch	1
15	B	214691	. Base- Stop Switch	1
16	A	68846	. Button-Stop Switch	1
17	B	85107	. Rod-Throttle	1
18	B	214701	. Seal-Throttle Rod	1
19	B	105673	. Pin-Roll .099 x .562	2
20	B	69041	. Button-Choke	1
21	A	105614	. "O" Ring .239 x .070	1
22	C	69042	Rod-Choke	1
23	A	69043	Snubber	1
24	A	219280	Gasket Kit (L.H. & R.H.)	1

# CARBURETOR ASSEMBLY **FIGURE 5**



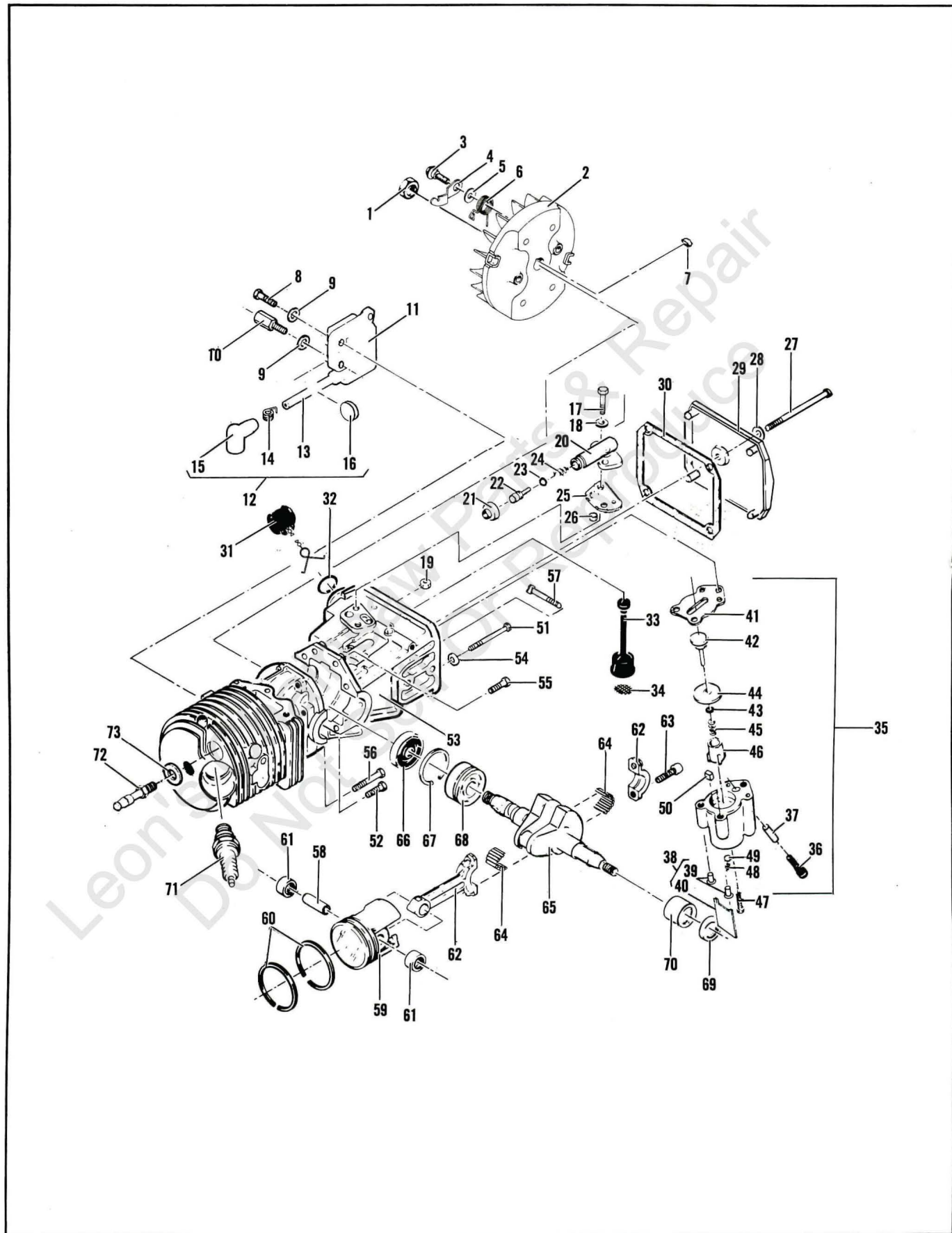
ITEM NO.	STK. CODE	PART NUMBER	DESCRIPTION	UNITS PER ASY.
	A	87666	Carburetor Asy (SDC 44)	1
1	---	---	Screw-Pump Cover	4
2	---	---	Cover-Pump	1
3	---	①②	Gasket-Cover	1
4	---	①②	Diaphragm-Check Valve	1
5	---	①②	Diaphragm-Fuel Pump	1
6	---	---	Screw-Plate	3
7	---	---	Plate-Throttle	1
8	---	---	Clip-Shaft	1
9	---	---	Shaft Asy Throttle	1
10	---	---	Plate-Choke	1
11	---	---	Shaft Asy-Choke	1
12	---	---	Ball-Choke Friction	1
13	---	---	Spring-Choke	1
14	---	①	Needle-High Speed	1

ITEM NO.	STK. CODE	PART NUMBER	DESCRIPTION	UNITS PER ASY
15	---	①	Needle-Idle	1
16	---	---	Spring-Needle	2
17	---	---	Screw-Diaphragm	4
18	---	---	Cover-Diaphragm	1
19	---	①②	Diaphragm-Metering	1
20	---	①②	Gasket-Diaphragm	1
21	---	①	Screw-Level Pin	1
22	---	①	Pin-Lever	1
23	---	①	Lever-Metering	1
24	---	①	Spring-Lever	1
25	---	①	Valve-Needle	1
26	---	①	Plug-3/8	1
27	---	①	Plug-5/16	1
28	---	①	Screen-Fuel	1
29	B	- 83758	Kit-Valve & Seat	1

**NOTE:** Items are shown for identification and disassembly sequence purposes only. Components are not available individually. Kits listed are the only service parts available.

① Included in Major Repair Kit P/N 217080 (A)  
 ② Included in Gasket/Diaphragm Kit P/N 219248 (B)

# FIGURE 6 POWERHEAD ASSEMBLY





## FIGURE 6 POWERHEAD ASSEMBLY

ITEM NO.	STK. CODE	PART NUMBER	DESCRIPTION	UNITS PER ASY.
1	B	110703	Nut, Hex Flange 3/8-24	1
2	A	216739	Flywheel Assembly	1
3	B	93464	. Screw, Pawl Pivot	2
4	A	93198	. Pawl, Starter	2
5	B	93469	. Washer, Starter Pawl	2
6	A	214102	. Spring, Starter Pawl	2
7	A	100106	Key, Woodruff	1
8	A	110127	Screw, Hex 10-24x.88 SEMS	1
9	C	223637	Spacer	2
10	B	83512	Stud, Special	1
11	A	223708-01	Kit, Ignition Assembly	1
12	A	223884	. Kit, Spark Plug Wire	1
13	B	---	.. Wire-7mm Ignition	1
14	A	102556	.. Connector, Spark	1
15	B	95266	.. Boot, Spark Plug	1
16	B	110995	.. Grommet, Spark Plug Wire	1
	B	215533-01 ①	.. Grommet, H/T Lead	1
17	B	110338	Screw-Hx 8-32 x .532	2
18	B	110613	Washer, #8 Hard	1
19	B	100955	Nut-Hx Lock 8-32	1
20	A	84156	Housing-Oil Pump	1
21	A	215151	Cap-Oil Pump	1
22	B	62266	Plunger-Oil Pump	1
23	A	105614	*O* Ring .239 x .070	1
24	B	66687	Spring-Plunger	1
25	A	91669	Gasket-Oil Pump Hsg.	1
26	A	91668	Valve-Oiler	1
27	B	110291	Screw-Pn 10-24 x 2.62	1
28	C	110921	Washer, Sealing	1
29	B	218707	Cover-Oil Tank	1
30	A	86306	Gasket-Cover Oil Tank	1
31	A	216052	Cap Assembly, Oil	1
32	A	101148	*O* Ring .75 ID x .09	1
33	A	91672	Hose Asy-Oil Pickup	1
34	B	51506	. Screen-Oil Intake	1
35	A	215339	Kit, Pump Tested	1
36	A	217936	. Screw-TR, 10-24 x .75 TORX	1
37	C	91774	. Sleeve-Pulse Pump	1

ITEM NO.	STK. CODE	PART NUMBER	DESCRIPTION	UNITS PER ASY.
38	A	215246	. Kit, Oil Pump	1
39	---	---	.. Eyelet	2
40	---	---	.. Clip-Sealing	1
41	B	92874	.. Seal-Pulse Pump	1
42	A	214278	. Piston Assembly-Oiler	1
43	A	105603	. *O* Ring, .114x.070	1
44	B	86182	. Ring-Piston Pulse Pump	1
45	A	60259	. Spring, Piston Oiler	1
46	C	62227	. Sleeve-Oiler Adjustment	1
47	C	110963	. Screw-Hx 8-32 x 1.00 WSH	1
48	---	---	. Spring-Outlet Valve	1
49	---	---	. Ball	1
50	B	91259	. Pad-Pump	1
51	A	62106	Screw-Wsh 12-24 x 1.75	4
52	A	110288	Screw-Hx Wsh 8-32 x .75	1
53	B	214672	Cylinder/Crankcase Asy	1
54	A	111025	. Washer-Sealing Aluminum	4
55	A	110288	. Screw-Hx Wsh 8-32 x .75	1
56	A	110618	. Screw-Hx Wsh 8-32 x 1.37 Wsh	1
57	A	62065	. Bolt-Bar Mounting	2
58	A	69020	Piston-Pin	1
59	A	89783-01	Piston Assembly	1
60	A	92517	. Set-Piston Ring	1
61	A	111021	. Bearing-Needle	2
62	A	85352	Connecting Rod Asy	1
63	A	61627-01	. Screw Connecting Rod	2
64	A	63225	. Pkg Needle Roller (20)	1
65	B	216897	Crankshaft Assembly	1
66	A	67906	. Seal, Oil	1
67	B	63464	. Ring, Snap	1
68	B	67905	. Bearing, Ball	1
69	A	110260	Seal, Oil .625 I.D. x .875	1
70	A	104357	Bearing, Needle	1
71	A	92879 ②	Spark-Plug	1
72	A	62345 ③	Spark-Plug	1
73	B	94272	Valve-Compression Release	1
74	A	214765	Washer-Valve	1

① Not Illustrated. Included in Spark Plug Wire Kit, P/N 223884 which is a universal kit. Please discard Grommet, H/T Lead and use Grommet, Spark Plug Wire, P/N 110995 for installation on Pro Mac 10-10S.

② Used on models with suffix number -03.

③ Used on models with suffix number -02, -04, -05, -06.

**FIGURE 7 SPECIFICATIONS**

Bar Length	16-28 inches
Weight	15.6 lbs. (7.1 kg)
Displacement	3.5 cu.in. (57 cc)
Bore and Stroke	1.812 in. x 1.375 in.
Cylinder Type	Hard Chrome
Ignition	Electronic
Ignition Timing	26 Degrees B.T.D.C.
Lamination Gap	.011 to .015 in. (.30 to .40mm)
Spark Plug Gap	.025 in. (.63mm)
Sprocket Type	T .375 Pitch Floating Rim
Clutch Engagement Speed	2800 to 3000 RPM
Fuel Tank Capacity	24.0 oz.
Oil Tank Capacity	9.6 oz.

**TORQUE VALUES**

Connecting Rod Screws	65 to 70 inch pounds
Clutch Nut	160 to 170 inch pounds
Flywheel Nut	265 to 325 inch pounds

**FIGURE 8 TOOLS / ACCESSORIES**

PART NUMBER	STK. CODE	DESCRIPTION
94121-01	A	Universal Carrying Case
93959	A	Guard - Bar
86419	T	Timing Guide
69191	T	Kit, Pressure Test Adapter
215432	T	Tool, Pressure Test
63139	T	Adapter Plate, Intake
63137	T	Adapter Plate, Exhaust
84453	T	Kit, Piston Tool
214221	A	Scrench
214223	A	Spark Plug, Standard Type
93436	A	Spark Plug, Cooler Type
91226	T	Wrench, Clutch/Flywheel
322235	T	Kit, Loctite

# BAR / CHAIN / SHARPENING TOOLS **FIGURE 9**

Bar Description	Bar Part Number	Replacement Nose Description	Replacement Nose Part Number
16" Mac 10 .375	89502	*	---- ---- ----
16" Speed Mac .375	94074	Nose Assembly Bar .375	86830
16" Speed Mac .375	94074-05	Kit Sprocket Nose Asy	219807
16" Speed Mac .325	223195	.325 Pitch Nose Asy	223183
20" Mac 10 .375	89503	*	---- ---- ----
20" Speed Mac .375	93778	Nose Assembly Bar .375	86830
20" Speed Mac .375	93778-05	Kit Sprocket Nose Asy	219807
20" Speed Mac .325	218924	.325 Pitch Nose Asy	218999
24" Mac 10 .375	89504	*	---- ---- ----
24" Speed Mac .375	86846	Nose Assembly Bar .375	86830
24" Speed Mac .375	86846-05	Kit Sprocket Nose Asy	219807
28" Mac 10 .375	89505	*	---- ---- ----
28" Speed Mac .375	86847	Nose Assembly Bar .375	86830
28" Speed Mac .375	86847-05	Kit Sprocket Nose Asy	219807
33" Speed Mac .375	91284-00	Kit Sprocket Nose Asy	86830
33" Speed Mac .375	91284-01	Kit, Sprocket Nose Asy	219807

\*Replacement nose assemblies are not available for these bars.

The **Mac 10** series bar features a stellite hard facing material welded to the nose to increase bar life. These bars are recommended for use in tough or abrasive conditions.

The **Speed Mac** series features a solid steel body, with heat treated, hardened bar rails for maximum strength and durability. This bar also features a removable sprocket nose that can be replaced when worn or damaged. This Bar is ideal for use where conditions demand long continual use.

Chain Description	Chain Part Number	File Plate Part Number	File Part Number	File Size
16" PMR 370 GLX 60 CL	218839-12	219132	219161	7/32
16" PM 370 GX 60 CL	88167-12			
16" SPR 370 GX 60 CL	89974-12			
16" SPG 320 GLX 68 CL	218551-12	219130	98023	11/64
20" SPR 370 GX 70 CL	89978-12	219132	219161	7/32
20" SPR GX 71 CL	89979-12			
20" PM 370 GX 71 CL	88173-12			
20" PMR 370 GLX 71 CL	218069-12	219130	98023	11/64
20" SPG 320 GLX 79 CL	218552-12			
24" SPR 370 GX 81 CL	89981-12			
24" PM 370 GX 81 CL	88175-12	219232	219161	7/32
24" PMR 370 GLX 81 CL	218070-12			
24" SPR 370 GX 82 CL	89982-12			
24" PM 370 GX 82 CL	93551-12			
28" SPR 370 GX 92 CL	89984-12			
28" PM 370 GX 93 CL	93552-12			
33" SPR 370 GX 106 CL	92101-12			

**NOTE:**

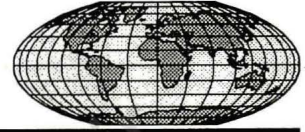
Chains identified by the letters **GLX** feature a low kickback design and are recommended for the casual user or home owner.

Chains identified with the letters **GX** are recommended for the experienced chainsaw user or the professional.

For more information on chains, bars, and accessories, refer to accessories catalog P/N 180119-R1.



**McCULLOCH**



• MANUFACTURING • SALES • SERVICE •

P.O. Box 11990 • Tucson, AZ 85734

**IF ADDITIONAL ASSISTANCE IS  
REQUIRED, CALL THIS TOLL-  
FREE HOT-LINE MON. - FRI.  
6:00 AM - 4:45 PM (MST)**

**1-800-423-6302**

ARIZONA RESIDENTS CALL:

**1-800-221-6507**