

ILLUSTRATED PARTS LIST

MODELS	SERIAL NUMBER PREFIX	MODELS	SERIAL NUMBER PREFIX
600013A	11-,12-,13-	600013K	11-,12-,13-
600013B	11-,12-,13-	600013U	11-,12-,13-
600013E	12-, 13-		

PRO 10-10A Chain Saws are identified by a model number (600013) followed by a suffix letter (A, B, E, K or U) stamped on the identification plate attached to the saw. Suffix letters denote variations in parts or assemblies in the manufacture of the saw.

Part numbers listed in this IPL which have a suffix letter or letters following the description, indicate the part is used only on the model(s) identified by the letter or letters.

Part numbers and descriptions without suffix letter or letters apply to all models of the PRO 10-10A saws.

Part numbers which have one or more dots (.) preceding their description may be ordered individually but they are also included in the kit or assembly whose description begins directly above the dot(s).

Part numbers which have changed since the previous printing of the IPL covering these saws, are indicated by a dash (-) preceding the new part number.

The policy of McCulloch Corporation is one of continual improvement in design, manufacturing and engineering advancement wherever possible to assure still finer two-cycle power tools. Hence, specifications, equipment, colors, design and manufacturer's suggested list prices are subject to change without notice and McCulloch Corporation reserves the right to make such changes without prior notification or obligation to backfit or supply backfit components for units previously shipped from the factory.

PRO 10-10 Automatic Chain Saw



April 1977

- CONTENTS -

	<u>Page</u>
Figure 1. General	2
Figure 2. CHAIN BRAKE Assembly	4
Figure 3. Fan Housing & Starter Asys	4
Figure 4. Carburetor Assembly	6
Figure 5. Carburetor Assembly	6
Figure 6. Fuel Tank Assembly	8
Figure 7. Powerhead Assembly	10
Accessories	9
Service Specifications	9



92379A-R1

PRO 10-10 Automatic

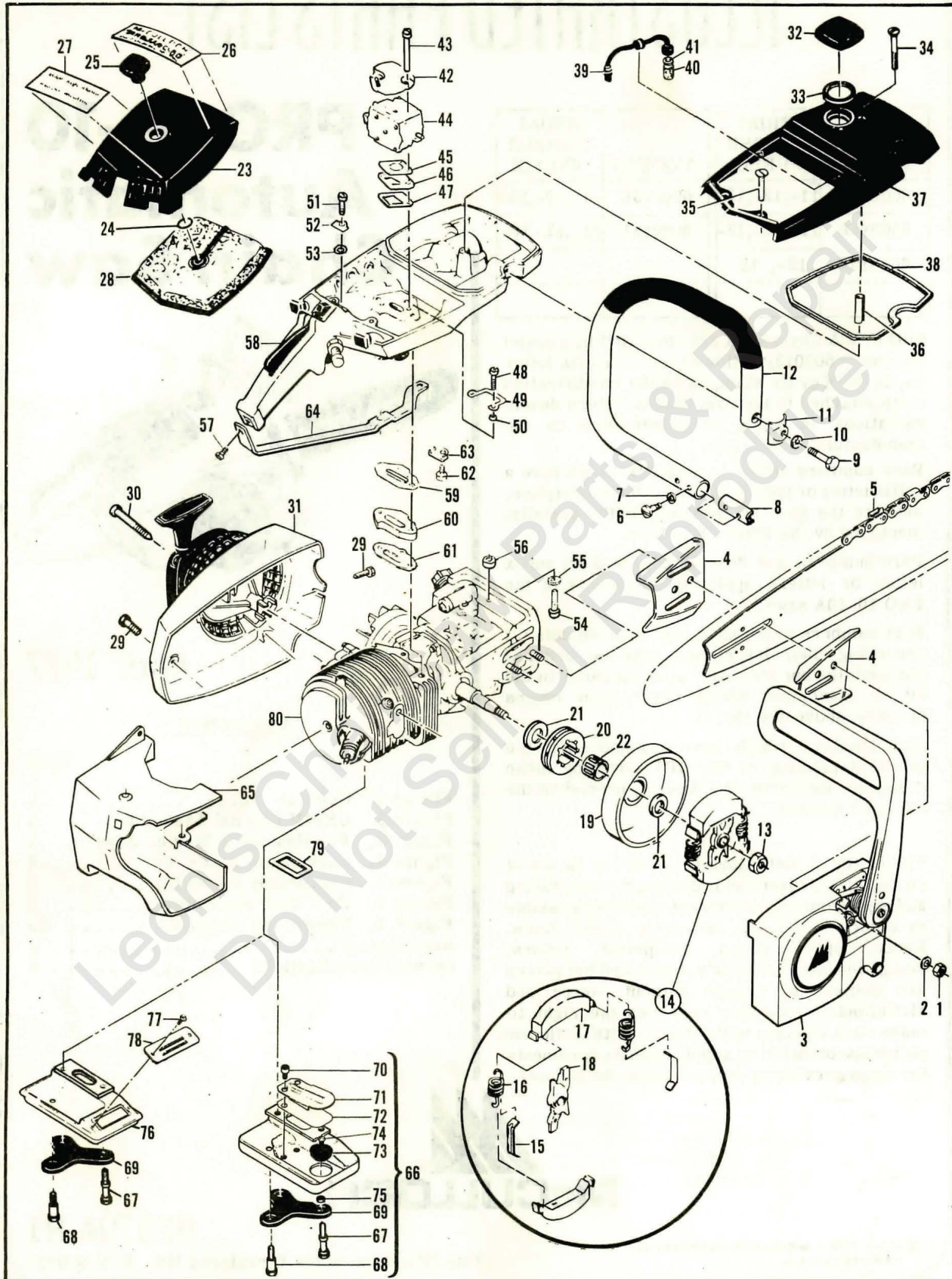


Figure 1. General

Figure 1. General

Item No.	Part Number	Description	Units Per Asy.
1	110454	Nut-Hx 5/16-24	2
2	100440	Washer-5/16	2
3		CHAIN BRAKE Asy (Fig 2)	
4	64330	Set-Bar Plates	1
5		Bar & Chain (Accessories)	
6	110865	Screw-Hx hd 10-24 x 7/8	2
7	100352	Washer-#10	2
8	89727	Retainer-Frame	1
9	102130	Screw-Hx hd 1/4-20 x 1-1/2	1
10	100153	Washer-Lock 1/4	1
11	63484	Clamp-Frame	1
12	-87686A	Frame & Grip Asy	1
13	86113	Nut-Hx 3/8-24 (L.H.)	1
14	87675	Clutch Asy	1
15	64583	. Retainer-Spring	2
16	83223	. Spring-Clutch	2
17	67233	. Shoe-Clutch	2
18	89438	. Rotor-Asy	1
19	86945	① Drum/Spkt Asy-7T .354P (A)	1
20	86950	① . Kit-Sprocket 7T .354P (A)	1
21	86958	① . Washer-Shim (A)	2
(19)	86946	② Drum/Spkt Asy-7T .375P (B,E,K,U)	1
(20)	86951	② . Kit-Sprocket 7T .375P (B,E,K,U)	1
(21)	86958	② . Washer-Shim (B,E,K,U)	2
[19]	65370	③ Drum/Spkt Asy-7T .354P (B,U)	1
[21]	61692	③ . Washer-Shim (B,U)	2
22	110330	Bearing-Sprocket	1
23	68530A	Cover Asy-Air cleaner	1
24	110565	. Ring-Retainer	1
25	68529	. Knob-Cover	1
26	91560	Plate-Name	1
27	91548	Plate-Instruction	1
28	69922	Filter-Air	1
29	110741	Screw-Pan hd 10-24 x 1/2	2
30	87871	Screw-Special	3
31		Fan Housing & Starter Asys (Fig 3)	
32	89322	Cap Asy-Fuel	1
33	69767	. Gasket	1
34	110402	Screw-Oval hd 12-24 x 2-3/8	1
35	103579	Screw-Fil hd 10-24 x 1	2
36	87840	Spacer	1

Item No.	Part Number	Description	Units Per Asy.
37	-69679	Cover-Fuel tank	1
38	69345	Gasket-Cover	1
39	64848	Hose Asy-Fuel	1
40	63932	. Filter-Fuel	1
41	100440	. Washer	1
42	83204	Kit-Air cleaner bracket	1
43	103357	. Bolt-Hx hd 10-24 x 2-1/4	2
44		Carburetor Asy (Fig 4,5)	
45	86189	Gasket-Carburetor	1
46	84078	Spacer-Carburetor	1
47	84081	Gasket-Spacer	1
48	110570	Screw-Hx hd 12-24 x 1-3/8	2
49	68582	Plate-Lock	1
50	102115	Washer-#12	2
51	110568	Screw-Hx hd 12-24 x 1-1/8	1
52	69516	Plate-Lock	1
53	64856	Washer-Special	1
54	110713	Screw-Skt hd 10-24 x 7/8	1
55	100003	Washer-#10	1
56	69772	Spacer-Fuel tank	1
57	-110910	Screw-Hx hd 10-24 x 1-3/8	1
58		Fuel Tank Asy (Fig 6)	
59	84082	Gasket-Fuel tank	1
60	84079	Insulator-Fuel tank	1
61	84082	Gasket-Insulator	1
62	110566	Screw-Hx hd 10-24 x 5/8	1
63	68508	Plate-Lock	1
64	85007	Brace-Handle	1
65	-85731A	Shroud	1
66	68863	Kit-Muffler (A)	1
67	67838	. Screw-Muffler long	2
68	67837	. Screw-Short	1
69	83993	. Plate-Lock	1
70	110563	. Screw-Skt hd 8-32 x 1/4 (A)	2
71	84780	. Stop-Reed (A)	1
72	84779	. Reed (A)	1
73	85933	① Kit-Spark Arrester (A)	1
74	101987	① . Screw-Rd hd 6-32 x 1/4 (A)	1
75	100796	① . Nut-Hx 6-32 (A)	1
76	-95318	Muffler Asy (B,U,E,K)	1
77	110662	. Screw-Pan hd 6-32 x 3/8 (B,U,E,K)	2
78	-95320	. Cover-Screen (B,U,E,K)	1
79	84007	Gasket-Muffler	1
80		Powerhead Asy (Fig 7)	

- ① Used on models with serial number prefix 13-.
- ② Used on models with serial number prefix 13-; also 11-, 12- with suffix letter A,E,K.
- ③ Used on models with serial number prefix 11-, 12-.

PRO 10-10 Automatic

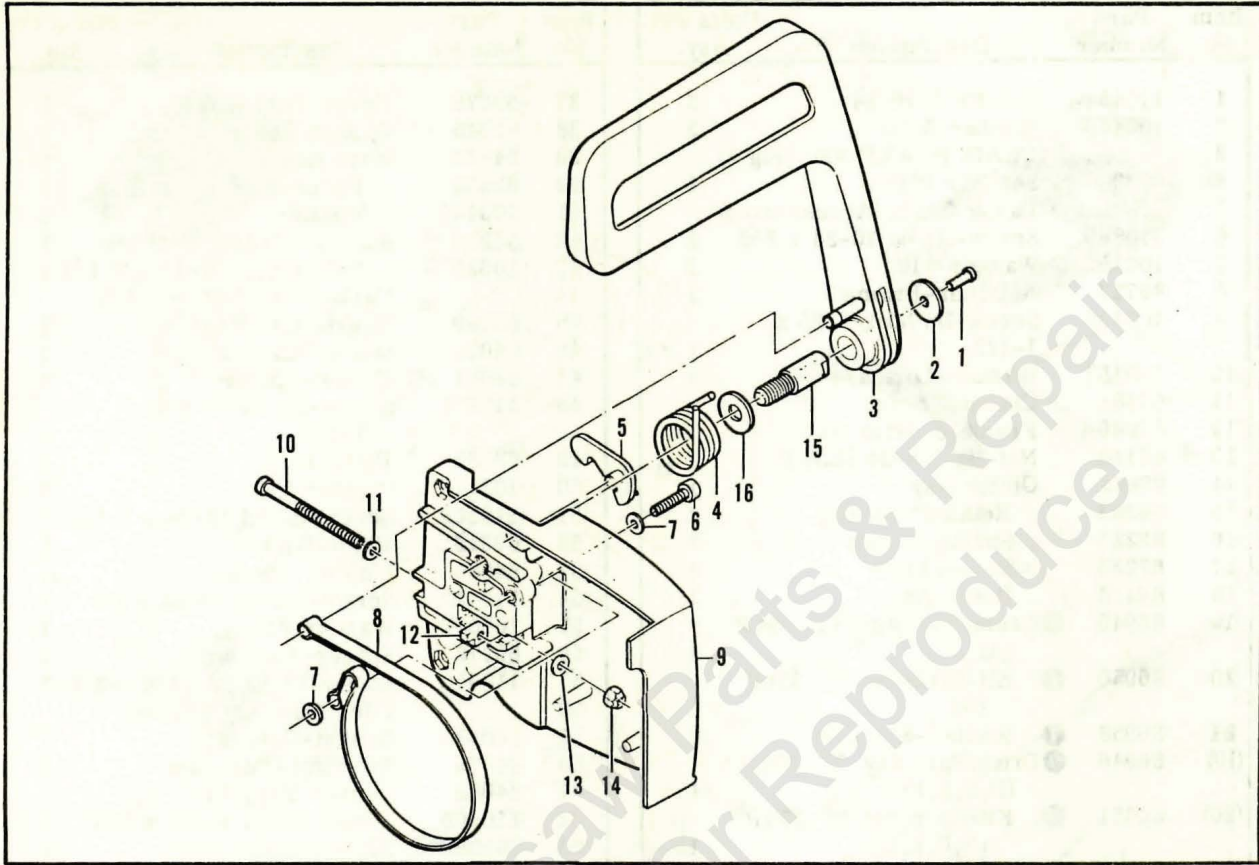


Figure 2. CHAIN BRAKE Assembly

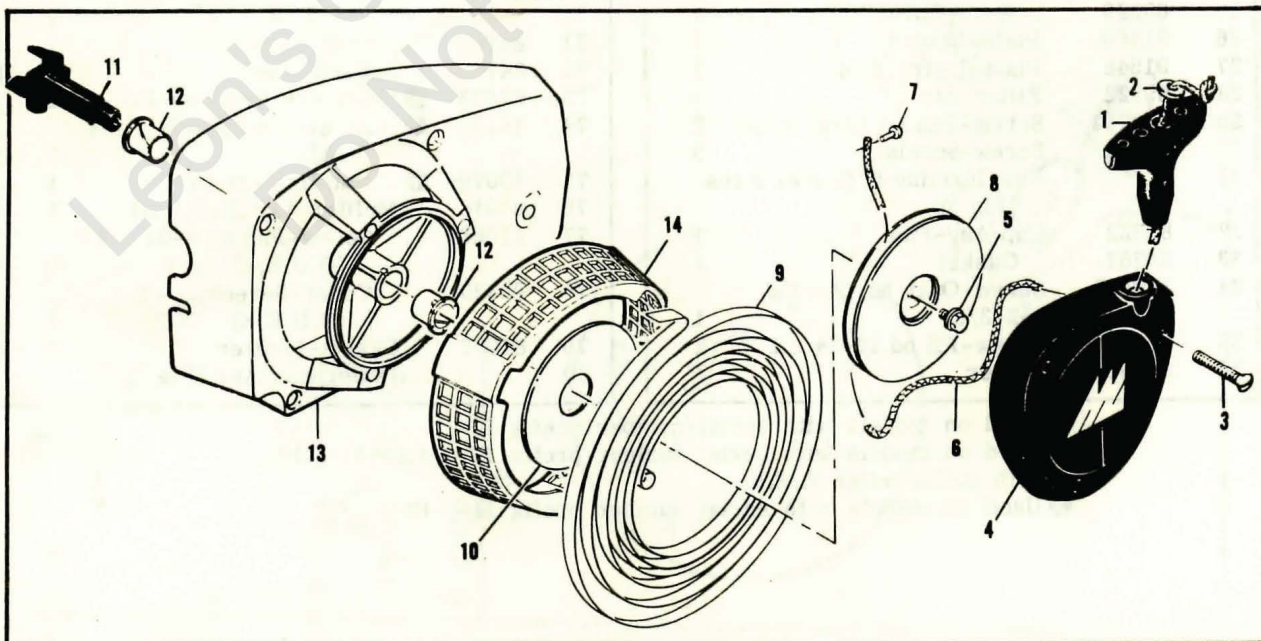


Figure 3. Fan Housing & Starter Assemblies

Figure 2. CHAIN BRAKE Assembly

Item No.	Part Number	Description	Units Per Asy.
1	91278	CHAIN BRAKE Assembly	1
	102500	. Screw - Pan hd 10-24 x 1/2	1
2	91273	. Washer - Special	1
3	91251	. Lever Assembly	1
4	91239	. Spring	1
5	91235A	. Latch Assembly	1
6	105738	. Screw - Skt hd 1/4-20 x 7/8	1
7	91274	. Washer - Special	2

Item No.	Part Number	Description	Units Per Asy.
8	91238	. Band	1
9	91249	. Housing Assembly	1
10	110527	. . Screw - Fil hd 10-24 x 2-3/4	1
11	110264	. . Washer - #10	1
12	61705	. . Nut - Bar adjusting	1
13	100002	. . Washer - #10	1
14	102067	. . Nut - Hx 10-24	1
15	91246	. . Pin - Lever pivot	1
16	91245	. . Washer - Thrust	1

Figure 3. Fan Housing & Starter Assemblies

Item No.	Part Number	Description	Units Per Asy.
1	91255	Kit - Starter handle	1
2	105490	. Washer - Starter handle	1
	87667	Fan Housing & Starter Asy	1
3	110646	. Screw - Oval hd 8-32 x 1-1/8	3
4	87672	. Cover - Starter	1
5	110341	. Screw - Hx hd 10-24 x 1/2	1

Item No.	Part Number	Description	Units Per Asy.
6	68162	. Rope-Starter	1
7	110470	. Rivet-Rope	1
8	85122	. Drum-Starter	1
9	87680	. Spring-Rewind	1
10	86053	. Shield-Spring	1
11	83748	. Shaft-Starter	1
12	57535	. Bushing - Starter	2
13	87693	. Kit-Fan Housing	1
14	87674	. . Guard-Sawdust	1

PRO 10-10 Automatic

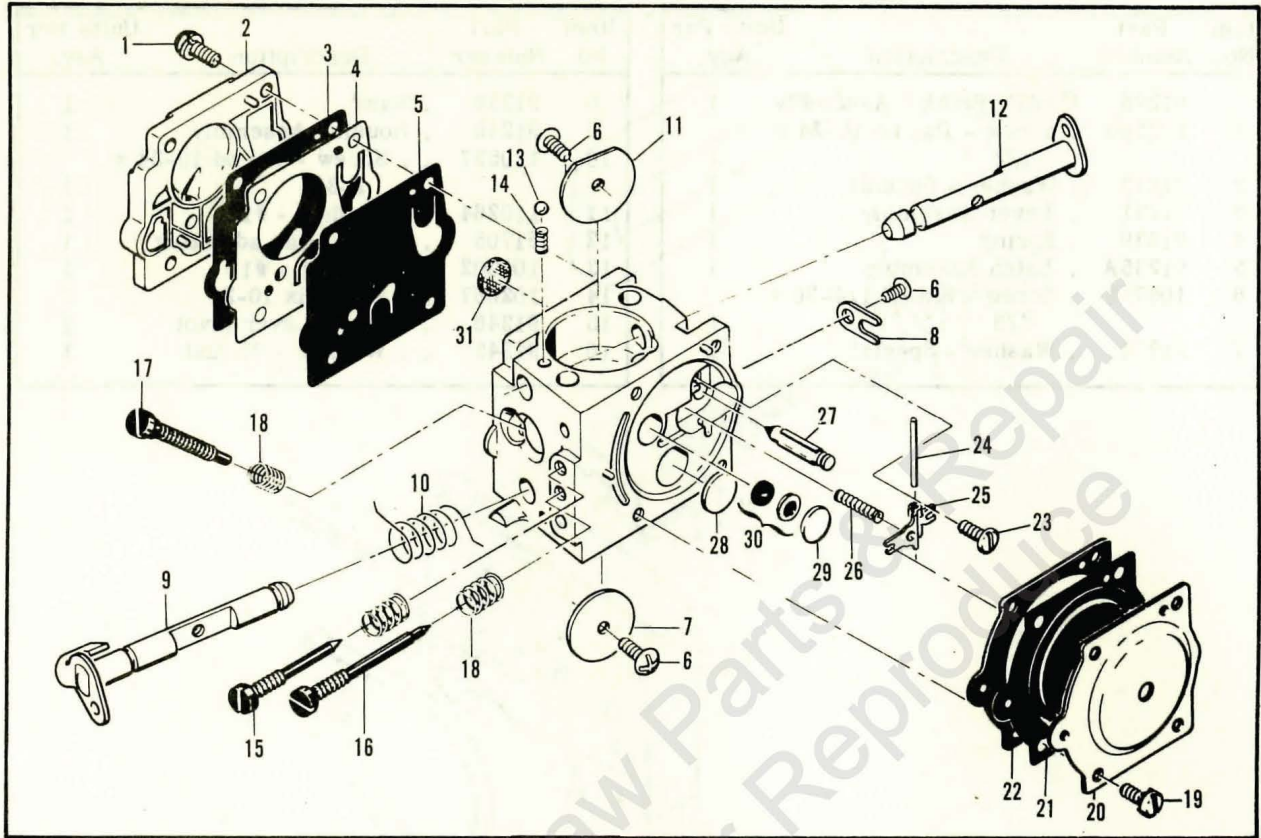


Figure 4. Carburetor Assembly

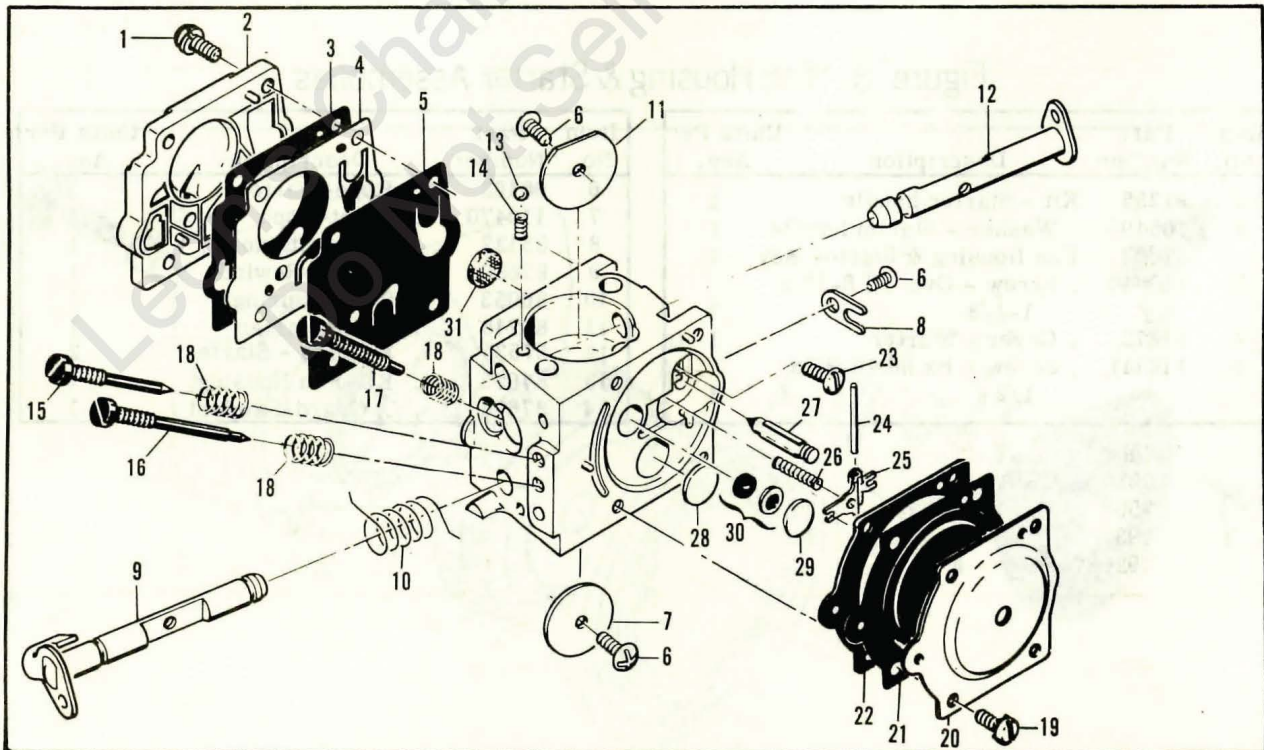


Figure 5. Carburetor Assembly

Figure 4. Carburetor Assembly

Item No.	Part Number	Description	Units Per Asy.
	85720	① Carburetor Assembly	1
1	67501	. Screw - Pump cover	4
2	83760	. Cover - Pump	1
3	*67495	. Gasket - Cover	1
4	*67498	. Diaphragm - Check valve	1
5	*83114	. Diaphragm - Fuel pump	1
6	*47690	. Screw - Plate	3
7	83762	. Plate - Throttle	1
8	67489	. Clip - Shaft	1
9	67486	. Shaft Asy - Throttle	1
10	*85981	. Spring - Throttle shaft	1
11	67490	. Plate - Choke	1
12	67488	. Shaft Asy - Choke	1
13	*100302	. Ball - Choke friction	1
14	*67504	. Spring - Choke friction	1
15	*68104	. Needle - High speed	1
16	*68105	. Needle - Idle	1
17	68106	. Screw - Idle speed	1

Item No.	Part Number	Description	Units Per Asy.
18	*67502	. Spring - Needle	3
19	70798	. Screw - Diaphragm cover	4
20	83761	. Cover - Diaphragm	1
21	*67499	. Diaphragm - Metering	1
22	*67496	. Gasket - Diaphragm	1
23	*67500	. Screw - Lever pin	1
24	*67508	. Pin - Lever	1
25	*67509	. Lever - Metering	1
26	*67503	. Spring - Lever	1
27	*67491	. Valve - Needle	1
28	*71690	. Plug - 3/8	1
29	*69506	. Plug - 5/16	1
30	83758	. Kit - Valve & Seat Asy	1
31	*67507	. Screen - Fuel	1
	*67482	Gasket Set	
	83764	Repair Kit	

* Indicates parts included in Repair Kit, P/N 83764.

① Used on models with serial number prefix 11-, 12-.

Figure 5. Carburetor Assembly

Item No.	Part Number	Description	Units Per Asy.
	-92654	① Carburetor Asy	1
1	67501	. Screw - Pump cover	4
2	83760	. Cover - Pump	1
3	67495	. Gasket - Cover	1
4	67498	. Diaphragm - Check valve	1
5	83114	. Diaphragm - Fuel pump	1
6	47690	. Screw - Plate	3
7	83762	. Plate - Throttle	1
8	67489	. Clip - Shaft	1
9	67486	. Shaft Asy - Throttle	1
10	85981	. Spring - Throttle shaft	1
11	67490	. Plate - Choke	1
12	67488	. Shaft Asy - Choke	1
13	100302	. Ball - Choke friction	1
14	67504	. Spring - Choke friction	1
15	-92937	. Needle - High speed	1
16	-92924	. Needle - Idle	1

Item No.	Part Number	Description	Units Per Asy.
17	68106	. Screw - Idle speed	1
18	67502	. Spring - Needle	3
19	70798	. Screw - Diaphragm cover	4
20	83761	. Cover - Diaphragm	1
21	67499	. Diaphragm - Metering	1
22	67496	. Gasket - Diaphragm	1
23	67500	. Screw - Lever pin	1
24	67508	. Pin - Lever	1
25	67509	. Lever - Metering	1
26	67503	. Spring - Lever	1
27	67491	. Valve - Needle	1
28	71690	. Plug - 3/8	1
29	69506	. Plug - 5/16	1
30	83758	. Kit - Valve & Seat Asy	1
31	67507	. Screen - Fuel	1
	67482	Gasket Set	

① Used on models with serial number prefix 13-.

PRO 10-10 Automatic

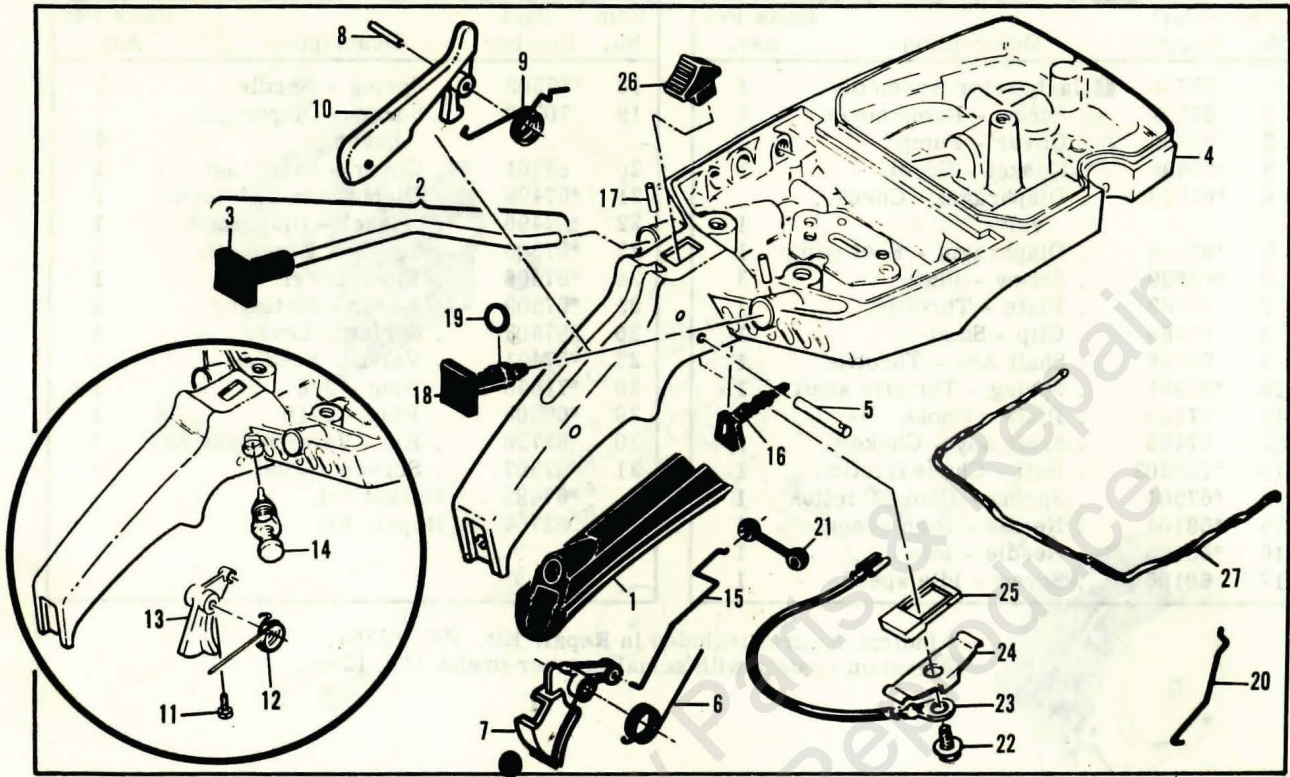


Figure 6. Fuel Tank Assembly

Figure 6. Fuel Tank Assembly

Item No.	Part Number	Description	Units Per Asy.
1	89320	Insert - Handle grip	1
2	64871	Button & Rod Assembly	1
3	63044	. Button - Oiler	1
4	-84183A	Kit - Fuel tank/control	1
5	110378	. Pin - Roll 3/16 x 15/16	1
6	-92152 ①	. Spring - Trigger	1
7	-92151 ①	. Trigger - Throttle	1
8	-105654 ①	. Pin - Roll 1/8 x 7/8	1
9	-92154 ①	. Spring - Trigger release	1
10	-92153 ①	. Release - Trigger	1
11	110668 ②	Screw - Fil hd 8-36 x 5/8	1
12	87178 ②	Spring - Throttle return	1
13	88796 ②	Trigger	1
14	85451 ②	Latch Assembly - Throttle	1

Item No.	Part Number	Description	Units Per Asy.
15	85107	Rod - Throttle	1
16	-68522A	Seal - Throttle rod	1
17	105673	Pin - Roll 3/32 x 9/16	2
18	69041	Button - Choke	1
19	105614	"O" Ring	1
20	69042	Rod - Choke	1
21	69043	Snubber - Rod	1
22	110706	Screw - Fil hd 8-18 x 1/2	1
23	62973A	Wire Asy - Stop switch	1
24	62451	Control - Switch	1
25	62950A	Base - Switch	1
26	68846	Button - Switch	1
27	69564 ③	Seal - Airbox	1

- ① Used on models with serial number prefix 13-.
- ② Used on models with serial number prefix 11-, 12-.
- ③ Furnished on a 12-1/2 inch strip containing 9 beads (enough for 9 replacements).

Accessories

Part Number	Description
91090 ①	Bar-16" Sprocket Nose (U)
86979N ①	Chain Asy-16" PM370 (U)
89502 ②	Bar-16" MAC 10 (U)
89521N ②	Chain Asy-16" PM350 (U)
69210	Piston Asy-.020 in. oversize
62813	. Ring Set-Piston .020 in. oversize
69211	Piston Asy-.030 in. oversize
62812	. Ring Set-Piston .030 in. oversize
86419	Guide-Timing
69191	Kit-Pressure Test Adapter

Part Number	Description
84453	Kit-Piston tool
86330	Kit-Spike
102388	. Screw-Hx hd 10-24 x 5/8
101191	. Nut-Hx 10-24
63746	Wrench
85933	Kit-Spark Arrester Screen (A)
89431	Kit-Spark Arrester Screen (B, U, E, K)
63097	Spark Plug (Standard)
63432	Spark Plug (Cooler)

- ① Used on models with serial number prefix 13-.
- ② Used on models with serial number prefix 11-, 12-.

Service Specifications

Spark Plug Gap	-	.025 inch (.63 mm)
Lamination Gap	-	.010 to .012 inch (.25 to .30 mm)
Breaker Point Gap	-	.019 to .020 inch (.48 to .51 mm)
Timing	-	26° BTDC
Clutch Engagement Speed		2800 to 3000 R.P.M.
Torques	-	Connecting Rod Screws: 65 to 70 pounds x inches (8.5 to 9.2 N.m)
		Clutch Nut: 160 to 170 pounds x inches (18 to 19 N.m)
		Flywheel Nut: 265 to 325 pounds x inches (30 to 37 N.m)

PRO 10-10 Automatic

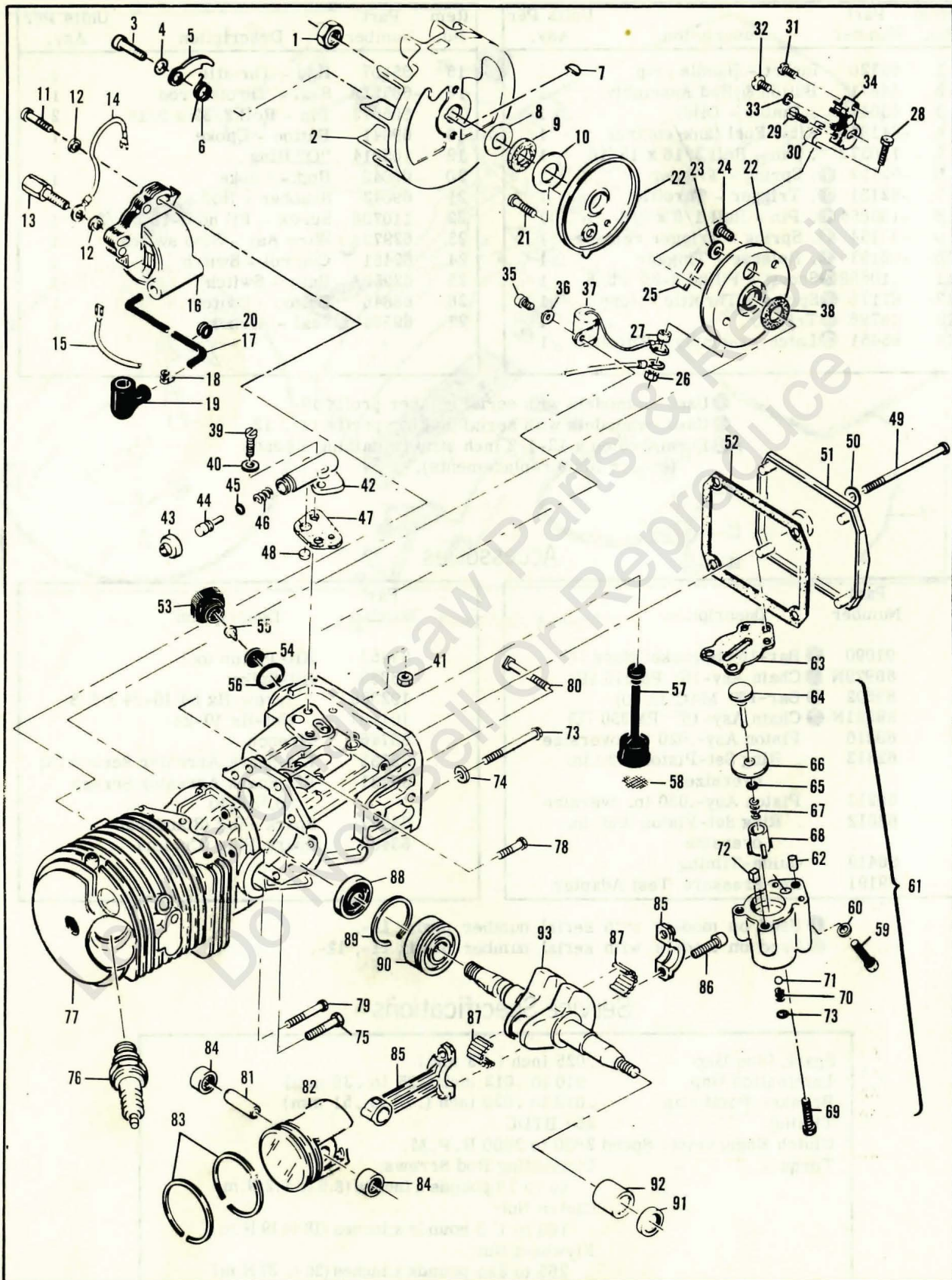


Figure 6. Powerhead Assembly

Figure 7. Powerhead Assembly

Item No.	Part Number	Description	Units Per Asy.
1	110703	Nut-Hx 3/8-24	1
2	86068	Flywheel	1
3	88804	Screw-Pawl pivot	2
4	83241	Washer-Special	2
5	67546	Pawl-Starter	2
6	67545	Spring-Pawl	2
7	100106	Key-Woodruff	1
8	67057	Washer-Thrust	1
9	67056	Seal-Breaker box cover	1
10	67054	Washer-Thrust	1
11	110127	Screw-Hx hd 10-24 x 7/8 (SEMS)	1
12	100002	Washer-#10	2
13	83512	Stud-Special	1
14	84686	Wire Asy-Ground	1
15	69344	Wire Asy-Primary	1
16	-87246A	Coil & Lamination Asy	1
17	50120	. Wire Asy-Spark plug	1
18	55061	. . Connector	1
19	85758	. . Boot	1
20	-100268	. Grommet	1
21	110584	Screw-Pan hd 8-32 x 3/4	1
22	91852	Kit-Breaker Box & Cover	1
23	91838	. Washer	1
24	110489	. Screw-Pan hd 6-32 x 7/16	1
25	54184	Wiper-Cam	1
26	100298	Nut-Hx 6-32	1
27	62365	Spacer-Breaker	1
28	110346	Screw-Hx hd 6-32 x 3/4	1
29	110706	Screw-Pan hd 8-18 x 1/2	1
30	83126	Strap-Conduction	1
31	110811	Screw-Pan hd 8-32 x 3/8	1
32	-110969	Screw-Hx hd 8-32 x 1/2	1
33	105976	Washer-#8	1
34	88808	Breaker Asy	1
35	-110623	Screw-Fil hd 8-32 x 1/2	1
36	100080	Washer-#8	1
37	85358	Condenser	1
38	67051	Seal-Breaker box	1
39	110338	Screw-Fil hd 8-32 x 1/2	2
40	110613	Washer-#8	2
41	100955	Nut-Hx 8-32	1
42	84156	Housing-Pump	1
43	62262	Cap-Housing	1
44	62266	Plunger-Pump	1
45	105614	"O" Ring	1
46	66687	Spring-Pump	1
47	91669	Gasket-Pump	1
48	91668	Valve-Pump	1
49	110291	Screw-Pan hd 10-24 x 2-5/8	1

Item No.	Part Number	Description	Units Per Asy.
50	110921	Washer-Sealing	1
51	86304	Cover-Oil tank	1
52	86306	Gasket-Cover	1
53	87270	Cap-Oil tank	1
54	87269	Retainer-Valve	1
55	86402	Valve-Check	1
56	101148	"O" Ring	1
57	91672	Hose Asy-Oil	1
58	51506	. Screen-Hose	1
59	110865	Screw-Hx hd 10-24 x 7/8	1
60	100003	Washer-#10	1
61	89115B	Pump Asy-Pulse	1
62	91774	. Sleeve	1
63	92818	. Seal-Pulse pump	1
64	60260A	. Piston Asy-Pump	1
65	105603	. "O" Ring	1
66	86182	. Ring-Piston	1
67	60259	. Spring-Piston	1
68	62227	. Sleeve-Adjustment	1
69	110386	. Screw-Hx hd 8-32 x 1	1
70	106104	. "O" Ring	1
71	-92844	. Spring-Outlet valve	1
72	102809	. Ball	1
73	-91259	. Pad-Pump	1
74	62105	Screw Asy-Sealing	4
75	62842	. Washer-Sealing	4
76	110288	Screw-Hx hd 8-32 x 3/4	1
77	63097	Spark Plug (A, B, K, U)	1
(77)	-93018	Spark Plug (E)	1
78	-84113A	Cyl/C'Case Asy	1
79	110288	. Screw-Hx hd 8-32 x 3/4	2
80	110618	. Screw-Hx hd 8-32 x 1-3/8	1
81	62065	. Bolt-Bar mounting	2
82	61649	Pin-Piston	1
83	69212	Piston Asy	1
84	62814	. Ring Set-Piston	1
85	103085	. Bearing-Needle	2
86	65401	Connecting Rod Asy	1
87	61627A	. Screw-Skt hd Special	2
88	63225	. Roller-Needle (Set of 20)	1
89	67906	Seal-Oil	1
90	63464	Ring-Snap	1
91	67905	Bearing-Ball	1
92	110260	Seal-Oil	1
93	104357	Bearing-Needle	1
94	87699	Crankshaft	1

McCULLOCH



● **MANUFACTURING** ● **SALES** ● **SERVICE** ●

McCULLOCH CORPORATION

P.O. BOX 92180, LOS ANGELES, CALIFORNIA 90009

INTERNATIONAL DIVISIONS:

LOS ANGELES, CALIFORNIA, P.O. BOX 92181

*Leon's Chainsaw Parts & Repair
Do Not Sell Or Reproduce*