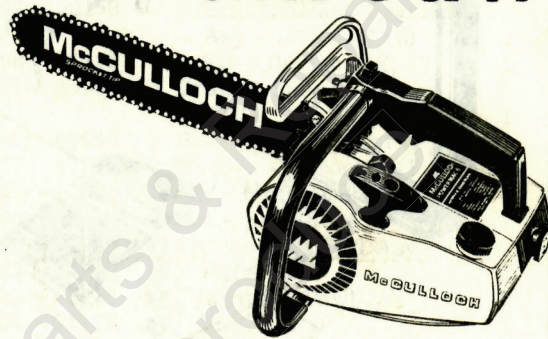


# ILLUSTRATED PARTS LIST

MODELS	SERIAL NUMBER PREFIX	MODELS	SERIAL NUMBER PREFIX
600088E	12-	600088P	11-, 12-
600088F	11-, 12-	600088U	11-, 12-

## Power Mac 6A Chain Saw



DECEMBER 1976

Power Mac 6 chain saws are identified by a model number (600088) followed by a suffix letter (E, F, P or U) stamped on the identification plate attached to the saw. Suffix letters denote variations in parts or assemblies in the manufacture of the saw.

Part numbers listed in this IPL which have a suffix letter or letters following the description, indicate the part is used only on the model(s) identified by the letter or letters.

Part numbers and descriptions without suffix letter or letters apply to all models of the Power Mac 6A saws.

Part numbers which have one or more dots (.) preceding their description may be ordered individually but they are also included in the kit or assembly whose description begins directly above the dot(s).

Part numbers which have changed since the previous printing of the IPL covering these saws, are indicated by a dash (-) preceding the new part number.

The policy of McCulloch Corporation is one of continual improvement in design, manufacturing and engineering advancement wherever possible to assure still finer two-cycle power tools. Hence, specifications, equipment, colors, design and manufacturer's suggested list prices are subject to change without notice and McCulloch Corporation reserves the right to make such changes without prior notification or obligation to backfit or supply backfit components for units previously shipped from the factory.

### - CONTENTS -

	<u>Page</u>
Figure 1. General View .....	2
Figure 2. CHAIN BRAKE Assembly .....	4
Figure 3. Automatic Oiler Housing Assy ..	4
Figure 4. Powerhead Assembly .....	6
Figure 5. Carburetor Assembly .....	8
Figure 6. Fan Housing & Starter Assys ....	10
Service Specifications .....	9
Accessories .....	11

**McCULLOCH**

© U.S.A. 1976 - McCULLOCH CORPORATION

Printed in U.S.A.

92308A

(This IPL supersedes & replaces IPL, P/N 91426)

# Power Mac 6A

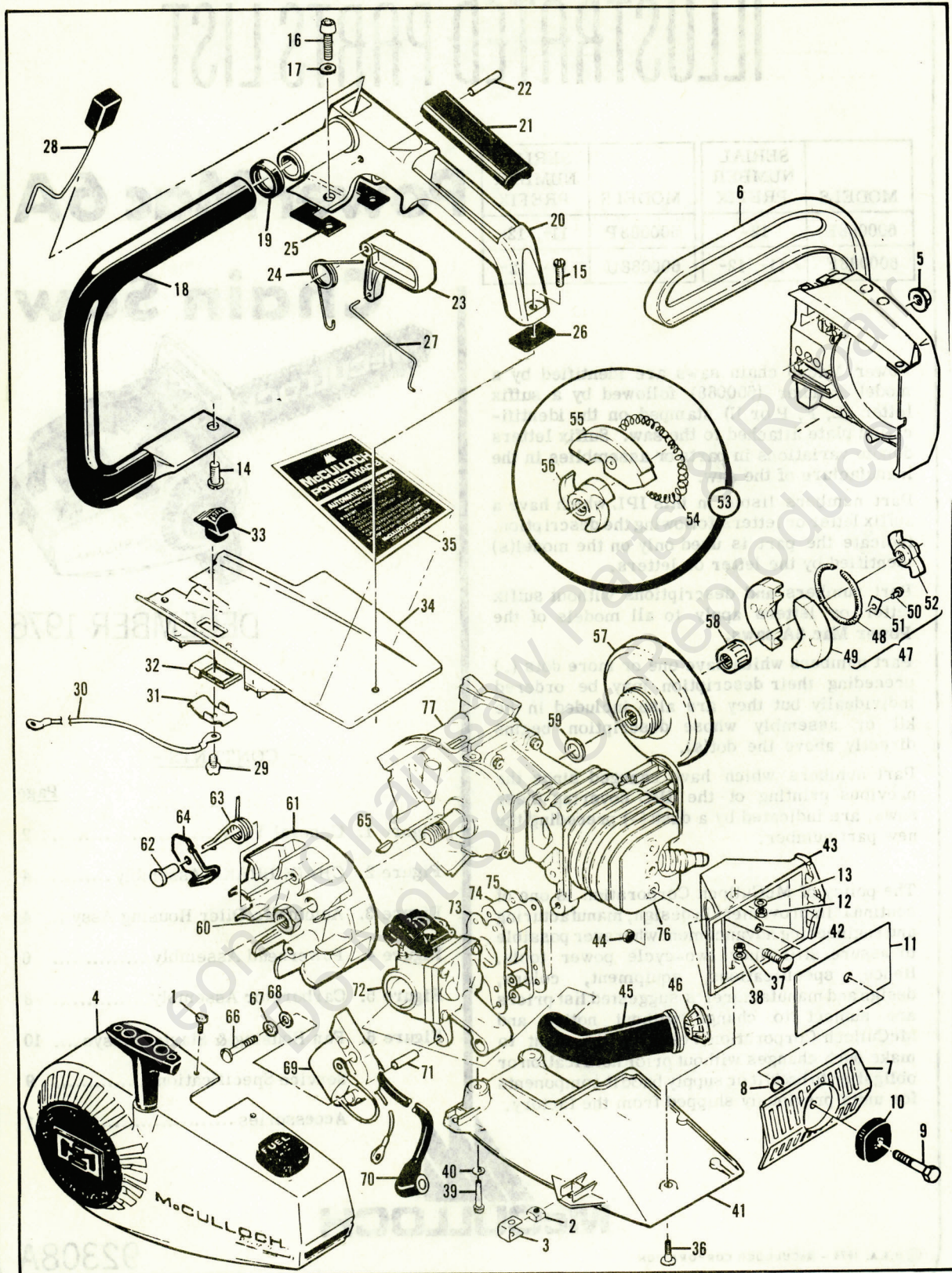


Figure 1. General View

# Power Mac 6A

Figure 1. General View

Item No.	Part Number	Description	Units Per Asy	Item No.	Part Number	Description	Units Per Asy
1	110597	Screw - Pan hd 8-32 x 1/2	6	45	67195	Duct - Air	1
2	68963	Nut - Square 8-32	6	46	68623	Shield - Duct	1
3	68770	Retainer - Nut	6	47	-92743	① Clutch Asy	1
4		Fan Housing & Starter Asy (Fig. 6)		48	69358	①. Spring - Clutch	1
5	110676	Nut - Hx 1/4-28	1	49	-92668	①. Kit - Clutch shoe	2
6		CHAIN BRAKE Asy (Fig.2)		50	-110957	①. . Rivet	2
7	69006	Cover - Air cleaner	1	51	85064	①. . Plate	2
8	105603	"O" Ring	1	52	-92721	①. Spider	1
9	69202	Screw - Cover	1	53	83156	② Clutch Asy	1
10	68616	Knob - Cover	1	54	69358	②. Spring - Clutch	1
11	68685	Screen - Air cleaner	1	55	83220	②. Shoe - Clutch	3
12	100955	Nut - Hx 8-32	1	56	68778	②. Spider	1
13	100080	Washer - #8	1	57	90150	Drum/Sprocket/Bearing Asy - .375P (E, U)	1
14	110670	Screw - Pan hd 8-32 x 5/8	1	58	91222	. Kit - Bearing (E, U)	1
15	110726	Screw - Pan hd 8-32 x 7/8	1	(57)	85504	Drum & Sprocket Asy - .250 P (F, P)	1
16	110585	Screw - Skt hd 10-24 x 3/4	2	(58)	67650	Bearing - Sprocket (F,P)	1
17	110264	Washer - #10	2	59	67303	Washer - Sprocket (F,P)	1
18	85465	Frame & Grip Asy	1	60*	-110970	① Nut - Hx 5/16-24	1
19	84061	Collar - Frame	1	(60)	110931	② Nut - Hx 3/8-24	1
20	85577	Handle Asy	1	61	-91961	① Flywheel & Pawl Asy	1
21	91365	. Grip - Handle	1	62	68796	①. Pin - Pawl	2
22	105654	. Pin - Trigger	1	63	67814	①. Spring - Pawl	2
23	84063	. Trigger	1	64	-91872	①. Pawl - Starter	2
24	84255	. Spring - Trigger	1	(61)	69806	② Flywheel & Pawl Asy	1
25	84239	Insulator - Forward	1	(62)	68796	②. Pin - Pawl	2
26	84240	Insulator - Rear	1	(63)	67814	②. Spring - Pawl	2
27	84256	Rod - Throttle	1	(64)	69103	②. Pawl - Starter	2
28	84228	Button & Rod Asy	1	65	-102164	① Key - Woodruff	1
29	110706	Screw - Pan hd 8-18 x 1/2	1	(65)	100106	② Key - Woodruff	1
30	88435	Wire Asy - Stop switch	1	66	110586	Screw - Pan hd 8-32 x 1-3/4	3
31	62451	Contact - Switch	1	67	100080	Washer - #8	3
32	62950A	Base - Switch	1	68	67177	Washer - Insulating	3
33	68846	Button - Switch	1	69	84957	Coil & Lamination	1
34	69009	Shroud - Top	1	70	69966	. Wire Asy - Spark plug	1
35	91595	Plate - Name	1	71	68198	Tube - Insulating	3
36	110584	Screw - Pan hd 8-32 x 3/4	1	72		Carburetor Asy (Fig. 5)	
37	100955	Nut - Hx 8-32	1	73	68197	Gasket - Carburetor	1
38	100080	Washer - #8	1	74	90713	Insulator - Carburetor	1
39	110714	Screw - Skt hd 10-24 x 3/4	2	75	90714	Gasket - Insulator	1
40	110264	Washer - #10	2	76		Powerhead Asy (Fig. 4)	
41	69010	Shroud - Bottom	1	77		Automatic Oiler Housing Asy (Fig. 3)	
42	110584	Screw - Pan hd 8-32 x 3/4	2				
43	87900	Housing - Air cleaner	1				
44	100955	Nut - Hx 8-32	2				

\*Flywheel nut torque should be 190 to 200 pound-inches (21.5 to 22.6 N.m.) for Nut, P/N 110970.

- ① Used on models with serial number prefix 12-.
- ② Used on models with serial number prefix 11-.

# Power Mac 6A

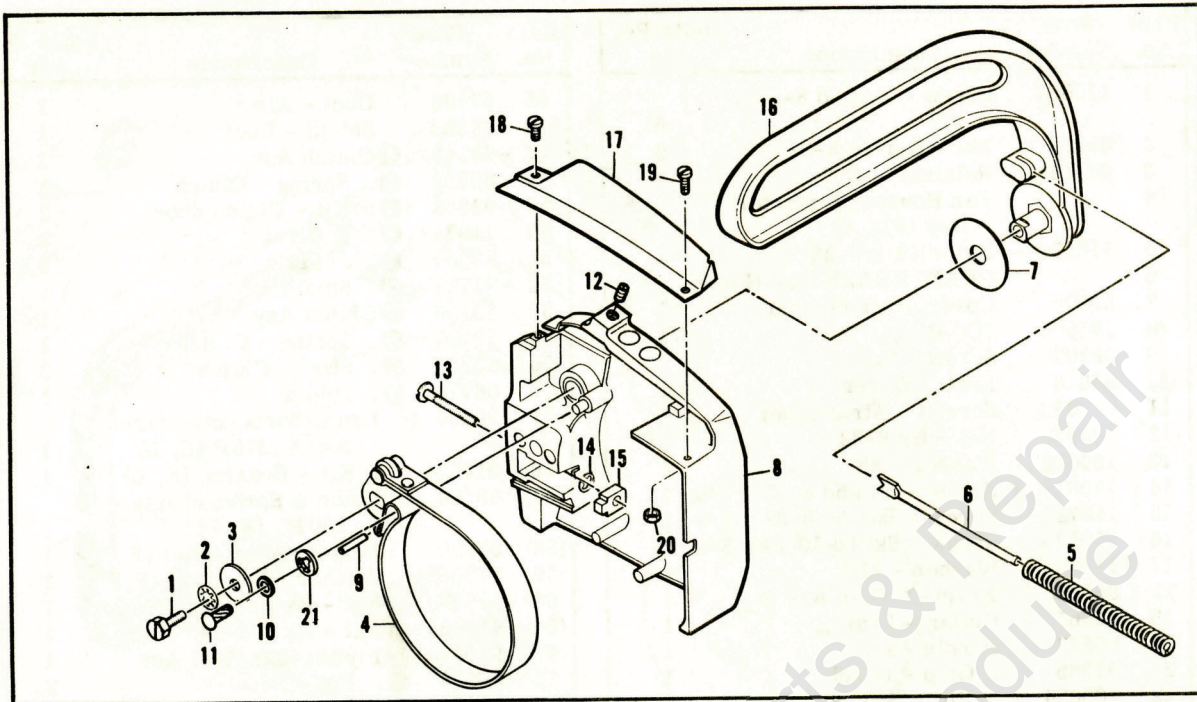


Figure 2. CHAIN BRAKE Assembly

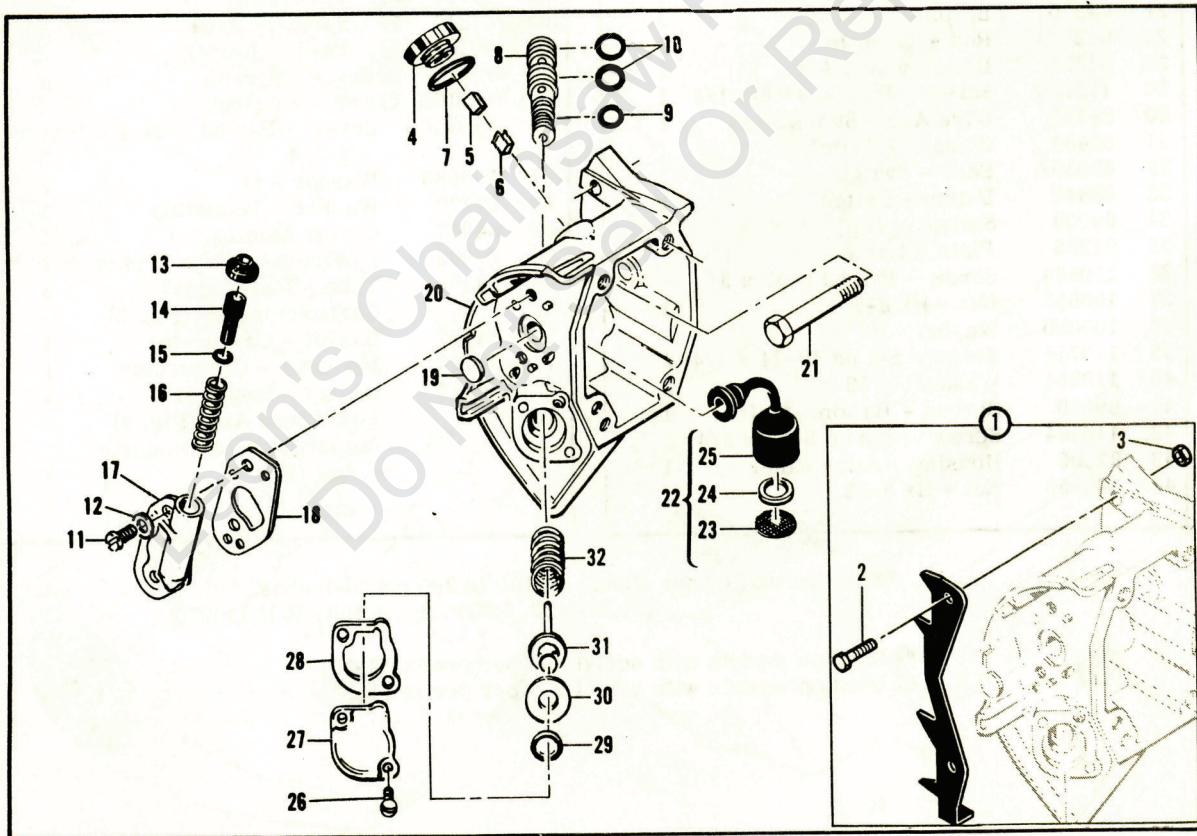


Figure 3. Automatic Oiler Housing Assembly

# Power Mac 6A

Figure 2. CHAIN BRAKE Assembly

Item No.	Part Number	Description	Units Per Assy
	-90570B	CHAIN BRAKE Assy	
1	102762	. Screw - Hex hd 10-24 x 1/2	1
2	101194	. Washer - Lock #10	1
3	110712	. Washer	1
4	90580	. Band & Lever	1
5	90587A	. Spring - Brake Actuator	1
6	90588	. Guide - Spring	1
7	90967	. Washer - Actuating Lever	1
8	-90571C	. Kit-Housing/Spring	1
9	103047	① . Pin	1
10	100001	① . Washer	1
11	110946	① . Screw Drive - 6 x 5/16	1

Item No.	Part Number	Description	Units Per Assy
12	-110955	. . Screw - Set 8-32 x 1/2	1
13	90658	. Screw - Adjusting	1
14	110907	. Ring - Retaining	1
15	84929	. Nut - Bar adjusting	1
16	90576	. Lever - Actuator	1
17	-91542A	Kit - Shield	1
18	-104164	. Screw - Pan hd 4-40 x 1/4, s/t	1
19	-110663	. Screw - Pan hd 4-40 x 5/16, s/t	1
20	-100530	. Nut - Hx 4-40	1
21	110913	② Fastener - Springtip	1

- ① Used on models with serial number prefix 12-.
- ② Used on models with serial number prefix 11-.

Figure 3. Automatic Oiler Housing Assy.

Item No.	Part Number	Description	Units Per Assy
1	91051	Kit - Spike (E,F,U)	1
2	104738	. Screw - Hx hd 10-24 x 1/2 (E,F,U)	2
3	101191	. Nut - Hex 10-24 (E,F,U)	2
4	68809	Cap - Oil	1
5	84953	. Plug - Cap	1
6	110737	. Clip	1
7	101148	"O" Ring	1
8	83591	Cylinder Assy - Oil Pump	1
9	105603	"O" Ring	1
10	105614	"O" Ring	2
11	105248	Screw - Rd hd 8-32 x 5/8 (SEMS)	2
12	100080	Washer - #8	1
13	62262	Cap - Oil pump	1
14	68603	Plunger - Oil pump	1
15	105614	"O" Ring	1
16	66687	Spring - Plunger	1

Item No.	Part Number	Description	Units Per Assy
17	83189	Body - Oil pump	1
18	83187	Gasket - Oil pump	1
19	62909	Valve - Oiler	1
20	91428	Tank Assy - Oil	1
21	-68687A	. Bolt - Bar	1
22	68140	Pickup Assy - Oil	1
23	67552	. Screen	1
24	67569	. Weight	1
25	67568	. Hose	1
26	105248	Screw - Rd hd 8-32 x 5/8 (SEMS)	2
27	83186	Cover - Oil pump	1
28	83185	Gasket - Cover	1
29	105603	"O" Ring	1
30	83184	Ring - Oiler piston	1
31	83181	Piston Assy - Oiler	1
32	83180	Spring - Oiler piston	1

# Power Mac 6A

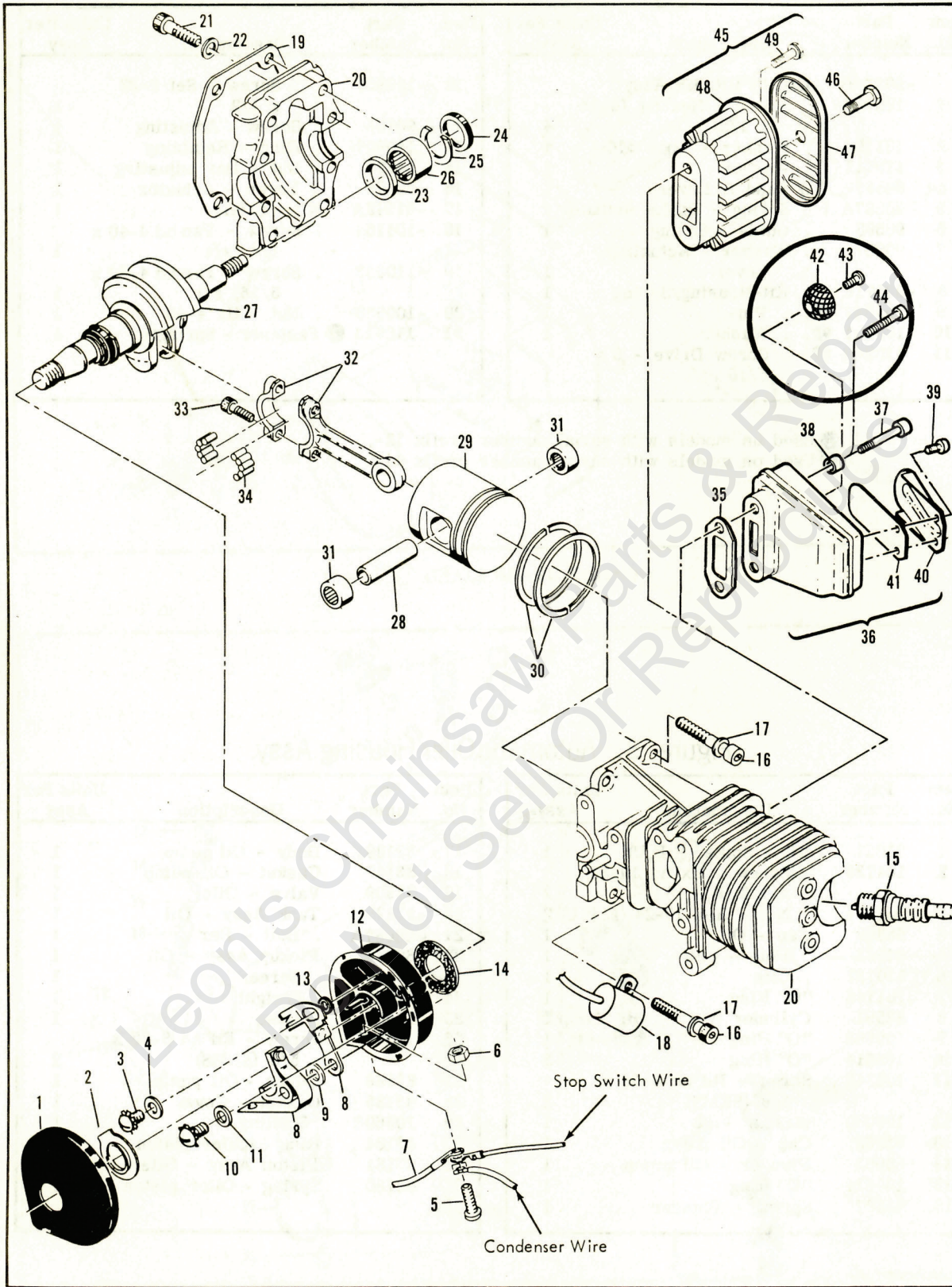


Figure 4. Powerhead Assembly

# Power Mac 6A

Figure 4. Powerhead Assembly

Item No.	Part Number	Description	Units Per Assy	Item No.	Part Number	Description	Units Per Assy
1	67841	Cover - Breaker box	1	29	68098	Piston Assy	1
2	69323	Seal - Outer	1	30	87165	. Ring Set - Piston	1
3	-110969	Screw - Hx hd 8-32 x 1/2	1	31	110538	. Bearing - Needle (Closed end)	2
4	69322	Washer - #8	1	32	68097	Rod Assy - Connecting	1
5	110364	Screw - Pan hd 6-32 x 5/8	1	33	66853	. Screw - Skt hd Special	2
6	-110975	Nut - Speed	1	34	68095	. Roller - Needle (Set of 20)	1
7	69344	Wire Assy - Primary	1	35	68747	③ Gasket - Spark arrester (E,F,P)	1
8	88810	Breaker Assy	1	36	84992	③ Kit - Reed muffler (E,F,P)	1
9	68630	Washer - Breaker	1	37	110692	③ . Screw - Skt hd 10-24 x 1-3/8 (E,F)	2
10	105248	Screw - Rd hd 8-32 x 5/8 (SEMS)	1	38	84950	③ . Nut - Round 10-24 (E,F,P)	2
11	100080	Washer - #8	1	39	110563	③ . Screw - Skt hd 8-32 x 1/4 (E,F,P)	2
12	-67840A	Kit - Breaker box	1	40	-92353	③ . Stop - Reed (E,F,P)	1
13	-92037	. Washer	1	41	85258	③ . Valve - Spark arrester (E,F,P)	1
14	68525	Seal - Breaker box	1	42	-85933	① Kit - Spark arrester screen (P)	1
15	63097	Spark Plug (P, U)	1	43	-101987	① . Screw - Rd hd 6-32 x 1/4 (P)	1
(15)	93018	Spark Plug (E, F)	1	44	-85926	① . Screw - Skt hd 10-24 x 1-3/8 (P)	2
16	110523	Screw - Skthd 8-32 x 1-1/4	4	45	-89683	① Kit - Sound Reducing (U)	1
17	110613	Washer - #8	4	46	-110674	① . Screw - Hx hd 10-24 x 1/2 (U)	1
18	85358	Condenser	1	47	-89684	① . Cover - Spark arrester screen (U)	1
19	83088	Gasket - Oil tank	1	48	-89682	① . Body - Spark arrester (U)	1
20	83454A	Crankcase Assy	1	49	-110928	① Screw - Hx hd 10-24 x 1/2 (U)	2
21	110522	Screw - Skt hd 8-32 x 7/8	4				
22	110613	Washer - #8	4				
23	68513	Washer - Thrust	2				
24	67175	Seal - Oil	2				
25	110547	Ring - Retaining	2				
26	66854	Bearing - Crankshaft	2				
27	-91932	① Crankshaft	1				
	-86439A	② Crankshaft	1				
28	66867	Pin - Piston	1				

- ① Used on models with serial number prefix 12-.
- ② Used on models with serial number prefix 11-.
- ③ Used on models with serial number prefix 11-; also 12- with the model number suffix letters indicated.

# Power Mac 6A

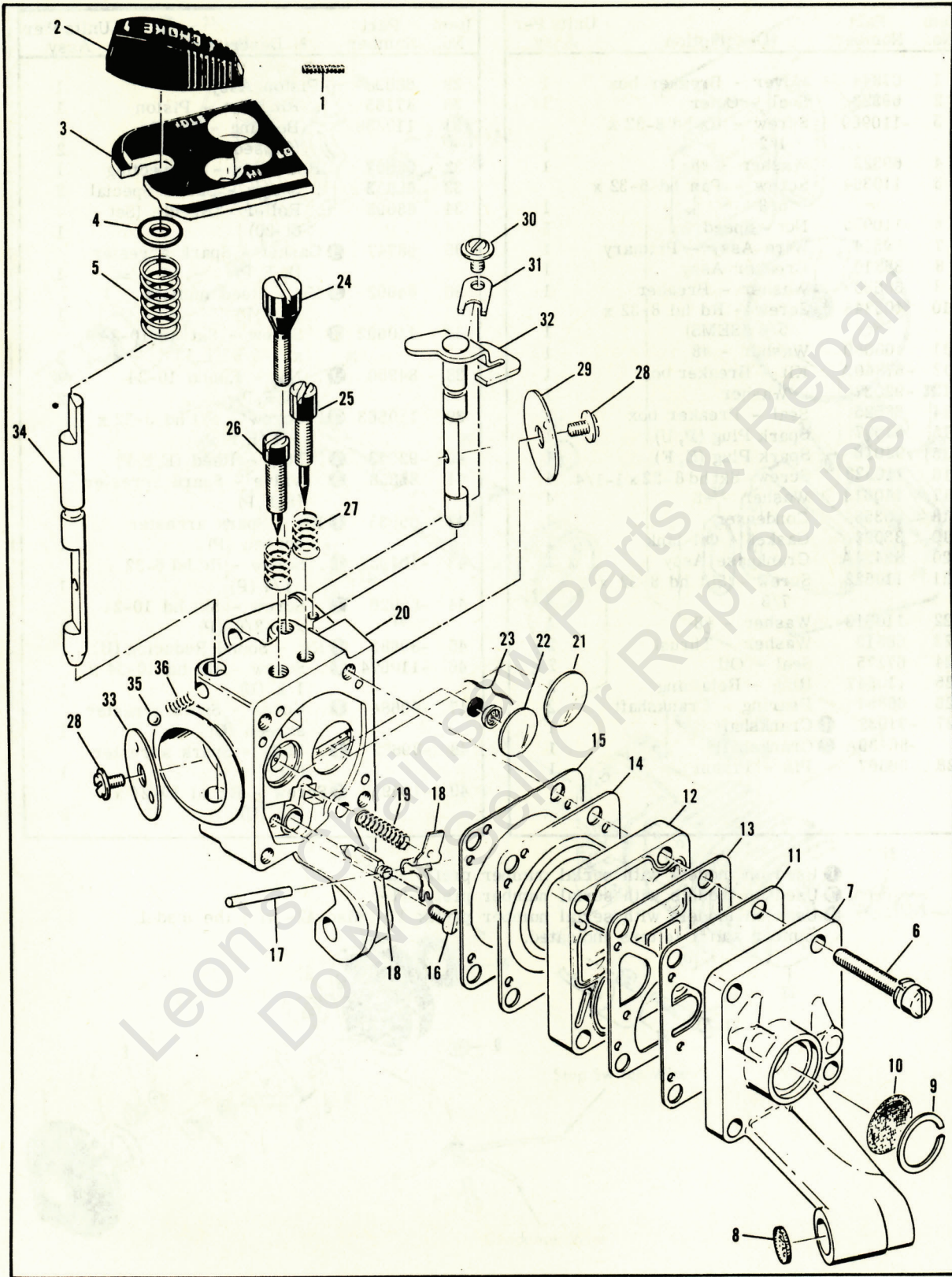


Figure 5. Carburetor Assembly



# Power Mac 6A

Figure 5. Carburetor Assembly

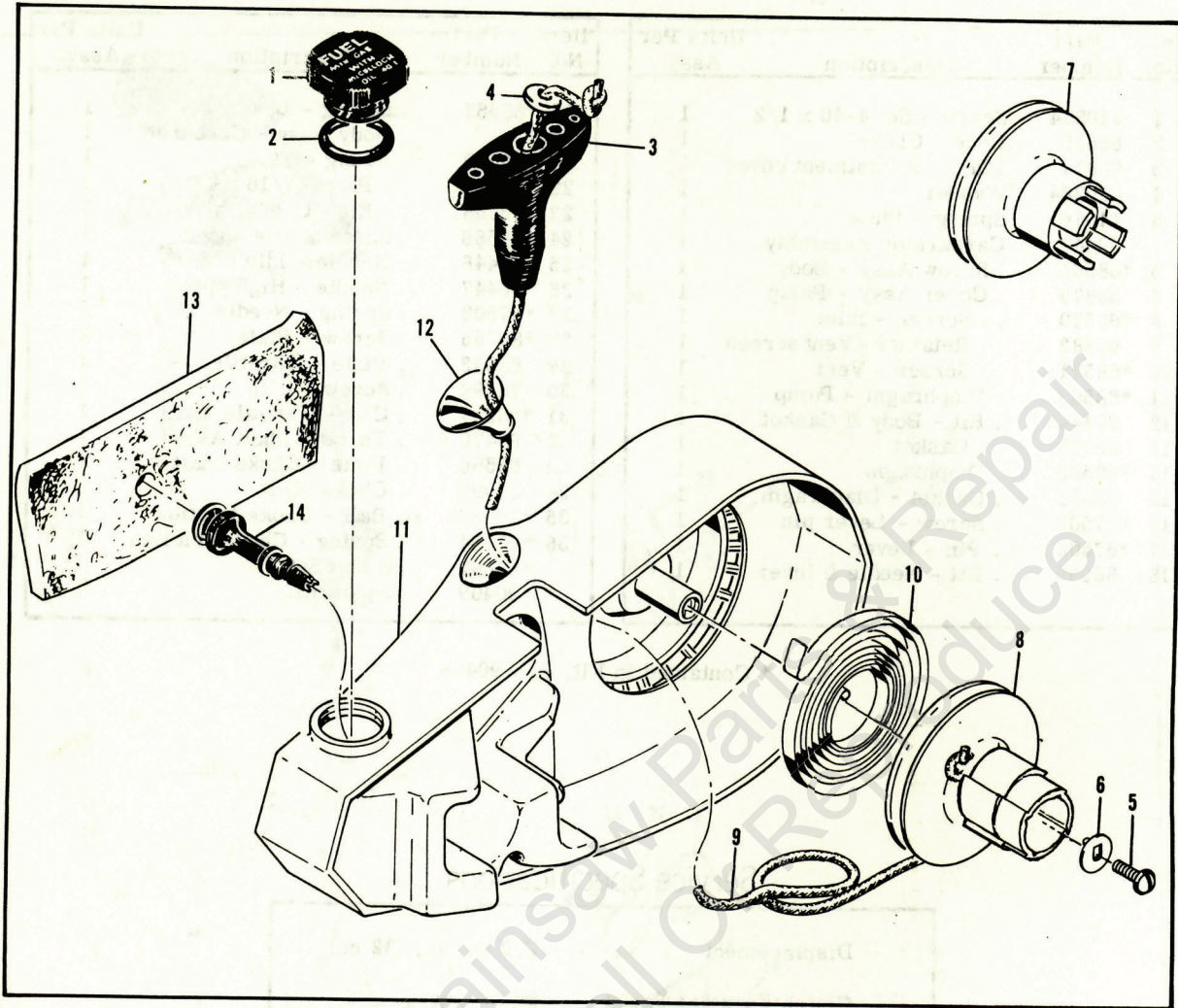
Item No.	Part Number	Description	Units Per Assy.	Item No.	Part Number	Description	Units Per Assy.
1	110554	Screw - Set 4-40 x 1/2	1	19	*68567	. Spring - Lever	1
2	68659	Knob - Choke	1	20		. Body Assy - Carburetor	1
3	68814	Plate - Adjustment cover	1	21	*68560	.. Plug - 1/2	1
4	110264	Washer	1	22	*68559	.. Plug - 7/16	1
5	11086	Spring - Plate	1	23	*83758	.. Kit - Check valve	1
	90447	Carburetor Assembly	1	24	*68566	. Screw - Idle speed	1
6	*68564	. Screw Assy - Body	1	25	*86446	. Needle - Idle	1
7	68879	. Cover Assy - Pump	1	26	*86447	. Needle - High speed	1
8	*68570	.. Screen - Inlet	1	27	*67502	. Spring - Needle	2
9	68883	.. Retainer - Vent screen	1	28	*83755	. Screw - Plate	2
10	*68571	.. Screen - Vent	1	29	68553	. Plate - Throttle	1
11	*68563	. Diaphragm - Pump	1	30	*70798	. Screw - Clip	1
12	90444	. Kit - Body & Gasket	1	31	*68554	. Clip - Throttle shaft	1
13	85035	.. Gasket	1	32	90470	. Throttle Shaft Assy	1
14	*68562	. Diaphragm	1	33	68556	. Plate - Choke shaft	1
15	68881	. Gasket - Diaphragm	1	34	84990	. Choke Shaft	1
16	*67500	. Screw - Lever pin	1	35	*100302	. Ball - Choke friction	1
17	*67508	. Pin - Lever	1	36	*67504	. Spring - Choke friction	1
18	85059	. Kit - Needle & lever	1		*68882	Gasket Set	
					90409	Repair Kit	

\* Contained in Kit, P/N 90409

## Service Specifications

Displacement	-	2.0 cu. in. (32 cc)
Clutch Engaging Speed	-	2600 rpm
Breaker Point Gap	-	.018 in.
Timing	-	26° BTDC
Spark Plug Gap	-	.025 in.

# Power Mac 6A



# Power Mac 6A

Figure 6. Fan Housing & Starter Assy.

Item No.	Part Number	Description	Units Per Assy
1	68813	Cap Assy - Fuel	1
2	101148	. "O" Ring	1
	83167	① Fan Housing & Starter Assy	1
	-92122	② Fan Housing & Starter Assy	1
3	91255	. Kit - Starter handle	1
4	105490	. . Washer	1
5	105248	. Screw - Rd hd 8-32 x 5/8 (SEMS)	1

Item No.	Part Number	Description	Units Per Assy
6	68497	. Washer - Tang	1
7	83080	① . Drum - Starter	1
8	-92307	② . Drum/Rope Assy	1
9	83203	. . Rope - Starter	1
10	83078	. Spring - Rewind	1
11	83201	. Housing Assy	1
12	67571	. . Guide - Rope	1
13	67582	. . Felt - Fuel	1
14	67581	. . Fitting - Fuel	1

① Used on models with Serial Number Prefix 11-.

② Used on models with Serial Number Prefix 12-.

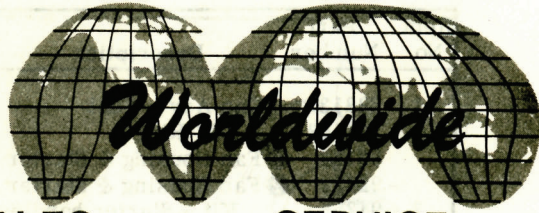
## Accessories

Part Number	Description
67680	Pkg - File Depth Gauge (0.025 - 0.030)
67688	Pkg - File Depth Gauge (0.015 - 0.020)
68915A	Kit - Piston tool
83323	Shop Manual
84338	Rope - 100 ft. reel
-85933	Kit - Spark arrester screen (E,F)
-89685	Screen - Spark arrester (U)
90257	Tuneup Kit

Part Number	Description
85687	Wrench (E,U)
88756	Kit - Combination Wrench (F,P)
-91485	Wrench - Socket (F,P)
-91567	Guard - Bar
*90550	Bar - 14" Sprocket nose (E,U)
*90643N	Chain - 14" Bar, MP 370G (E,U)
*90771	Bar - 14" MAC 6 (F,P)
*88034N	Chain - 14" Bar, SM 250 (F,P)

\*For optional cutting attachments, see Chain, Bar, Sprocket, and Accessories catalogs.

**McCULLOCH**



● MANUFACTURING ● SALES ● SERVICE ●

**McCULLOCH CORPORATION**

P.O. BOX 92180, LOS ANGELES, CALIFORNIA 90009

**INTERNATIONAL DIVISIONS:**

LOS ANGELES, CALIFORNIA, P.O. BOX 92181  
SINGAPORE, GOLDHILL PLAZA, SINGAPORE II  
SAO PAULO, BRAZIL, CAIXA POSTAL 21-492

**McCULLOCH OF CANADA LTD.**

6338 VISCOUNT ROAD, MALTON, ONTARIO L4V 1H4, CANADA

**McCULLOCH OF EUROPE, N. V.**

GEERDEGEM SCHONENBERG, 299 2800 MECHELEN, BELGIUM

**McCULLOCH OF AUSTRALIA PTY., LTD.**

P.O. BOX 223, SEVEN HILLS, N.S.W. 2147, AUSTRALIA

Leon's Chain Saw Parts & Repair  
Do Not Sell Or Reproduce