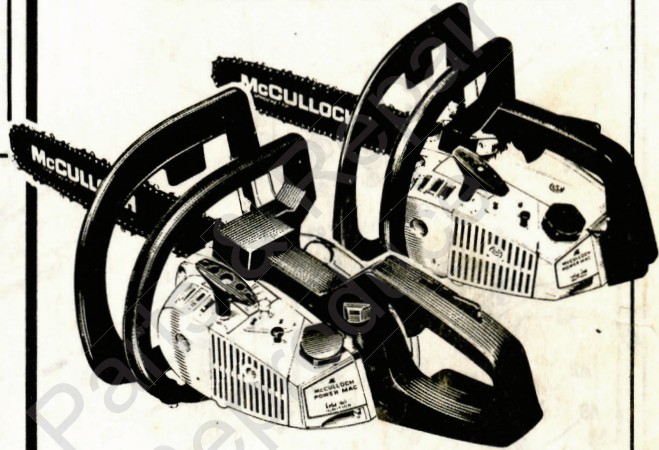


ILLUSTRATED PARTS LIST

PM 310		PM 320		PM 330	
MODELS	SERIAL NUMBER PREFIX	MODELS	SERIAL NUMBER PREFIX	MODELS	SERIAL NUMBER PREFIX
600042A	14-	600021A	14-	600043A	14-
600042B	14-	600021B	14-	600043B	14-
600042D	14-	600021D	14-	600043E	14-
600042E	14-	600021E	14-	600043G	14-
600042F	14-	600021G	14-	600043J	14-
600042G	14-	600021H	14-	600043N	14-
600042H	14-	600021J	14-	600043P	14-
600042J	14-	600021K	14-	600043U	14-
600042K	14-	600021M	14-		
600042M	14-	600021N	14-		
600042N	14-	600021P	14-		
600042P	14-				
600042U	14-				

POWER MAC[™] 310, 320, 330 CHAIN SAW



January 1984

- CONTENTS -

	Page
Figure 1. General	2
Figure 2. CHAIN BRAKE Assembly	4
Figure 3. Carburetor Assembly	5
Figure 4. Carburetor Assembly	6
Figure 5. Powerhead Assembly	8
Figure 6. Handle Assemblies	10
Service Specifications	7
Bar & Chain Combinations	7
Tools and Accessories	7

McCulloch chain saws are identified by a model number (in this instance, 600021) followed by a suffix letter (A, B, C, etc.) stamped on the identification plate attached to the saw. Suffix letters denote variations in parts or assemblies in the manufacture of the saw.

Part numbers listed in this I.P.L. which have a suffix letter or letters following the description, indicate the part is used only on the model(s) identified by the letter or letters.

Part numbers and descriptions without suffix letter or letters apply to all versions of the chain saw model.

Part numbers which have one or more dots (.) preceding their descriptions may be ordered individually, but they are also included in the kit or assembly whose description begins directly above the dot(s).

Part numbers in this IPL which were not in the previous IPL covering these saws, are indicated by a dash (-) preceding the new part number.

The policy of McCulloch Corporation is one of continual improvement in design, manufacturing and engineering advancement wherever possible to assure still finer two-cycle power tools. Hence, specifications, equipment, colors, design and manufacturer's suggested list prices are subject to change without notice and McCulloch Corporation reserves the right to make such changes without prior notification or obligation to backfit or supply backfit components for units previously shipped from the factory.



© U.S.A. - McCulloch Corporation, 1984

Printed in U.S.A.

95871-R2

(This IPL covers PM 300 Series units with Serial Number Prefix 14- ONLY.)

**POWER MAC 310,
PM 320, PM 330**

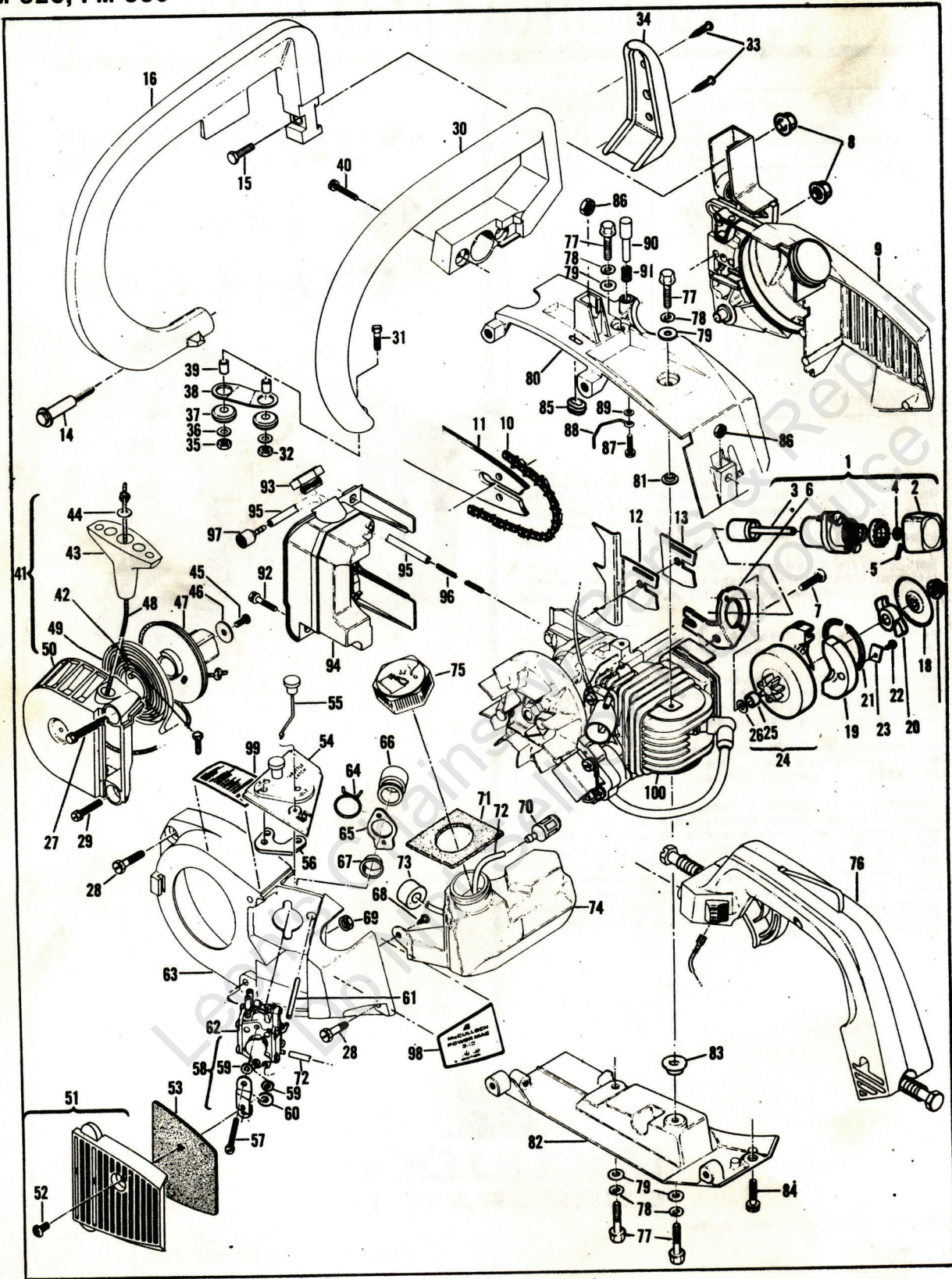


Figure 1. General

**POWER MAC™ 310,
PM 320, PM 330**

Figure 1. General

ITEM NO.	PART NUMBER	DESCRIPTION	UNITS PER ASY.
1	-215662 ①	Kit - Grinder Asy-AUTO-SHARP	1
2	215447 ①	. Knob	1
3	-216707 ①	. Wheel Asy - Grinding	1
4	-216134 ①	. . Washer	1
5	-216133 ①	. . Pin - Cotter	1
6	215208 ②	. Bracket - AUTO-SHARP	1
7	120025 ③	Screw - Pan hd M5 x 10	2
8	120029	Nut - Hx Flg M6 x 1.0	2
9	-	CHAIN BRAKE Assembly(Figure 2)	1
10	-	Chain (see page 7)	1
11	-	Bar (see page 7)	1
12	214207 ④	Spike	1
13	93148 ⑤	Spacer - Bar Pad	1
14	-215695	Screw - Hx hd M5 x 50 ST(SEMS)	1
15	120028	Screw - Hx hd M6 x 20	1
16	93021A	Lever - Wraparound	1
17	94244	Nut - Clutch	1
18	94243	Plate - Dust	1
19	213278	Kit - Clutch	1
20	94242	. Rotor	1
21	93608	. Spring Assembly - Clutch	1
22	110957	. Rivet - Fl 1/8 x .547	2
23	85064	. Plate - Clutch Shoe	2
24	-215252	Drum/Sprocket/Bearing Asy	1
25	91222	. Bearing	1
26	215259	. Washer - Sprocket	1
27	120096	Screw - WH M5 x 55 ST	1
28	120095	Screw - WH M5 x 20 ST	2
29	120098	Screw - WH M5 x 18	1
30	-216816	Kit - Frame	1
31	-216064	. Screw - M5 T-Head	1
32	-216585	. Nut - Hx M5 Lock	1
30	-216504 ④	Frame Assembly	1
31	-216064 ④	. Screw - M5 T-Head	1
32	93057 ④	. Nut - Hx M5 Lock	1
33	111011 ④	. Screw - Pn hd 10-16 x 7/8	2
34	95141 ④	. Weight - Frame	1
35	-216585	Nut - Hx M5 Lock	1
36	120045	Washer - M5	2
37	110989	Grommet	2
38	93152	Link	1
39	93057	Spacer - Mount	2
40	120036	Screw - Pn M4 x 25 (SEMS)	2
41	-216491	Kit - Starter Assembly	1
42	-216064	. Screw - M5 T-Head	1
43	91255	. Kit - Starter Handle	1
44	105490	. . Washer - Starter Handle	1
45	110041	. Screw - Pn hd 8-32 x .5	1
46	68497	. Washer	1
47	213261	. Drum/Rope Assembly	1
48	83203	. . Rope - Starter	1
49	83078	. Spring - Starter Rewind	1
50	-216494	. Housing Assembly - Starter	1
51	93527	Cover Assembly - Air Filter	1

ITEM NO.	PART NUMBER	DESCRIPTION	UNITS PER ASY.
52	93626	. Screw - Pan hd M5 x .80	1
53	94970	Filter - Air	1
54	94608	Cover Assembly - Air Box	1
55	214316	. Rod Assembly - Choke	1
56	94721	. Seal - Air	1
57	120049	Screw - Pan hd M5 x 40	2
58	94905	Kit - Choke Plate & Bracket	1
59	-	. Washer - Flat	2
60	-	. Washer - Wavy	1
61	93151	Hose - Pulse	1
62	-	Carburetor (Figure 3, 4)	1
63	93101A	Housing - Fan	1
64	94302	Clip - Spring	1
65	92747	Flange - Carburetor Mounting	1
66	213211	Kit - Carburetor Boot	1
67	95656	. Eyelet	1
68	111002	Screw - Pan hd 10-16 x .5	1
69	94501	Nut - Hx M5 x 0.8 Thin	1
70	93720	Pickup - Fuel	1
71	94491	Seal - Fuel Vent	1
72	93997	Hose - Fuel	1
73	90869	Filter - Vent	1
74	95301	Kit - Fuel Tank	1
75	95300	. Cap Assembly - Fuel	1
76	-	Handle Assemblies (Figure 6)	1
77	213166	Screw - Hx Wsh M6 x 16	4
78	102523	Washer - Lock	4
79	105043	Washer - 1/4 Plain	4
80	214152	Kit - Top Shroud	1
81	214350	. Insulator	1
82	214154	Kit - Bottom Shroud	1
83	214350	. Insulator	1
84	120095	Screw - WH M5 x 20 ST	1
85	94192 ⑤	Grommet	1
86	120034	Nut - Hx M6 x 1.0	2
87	110999	Screw - Hx hd 6-20 x 16 WH	1
88	94540	Rod - Oiler	1
89	100001	Washer - Plain	1
90	93304A	Knob - Oiler	1
91	93634A	Spring - Compression	1
92	120095	Screw - WH M5 x 20 ST	2
93	93274	Cap - Oil	1
94	-216696	Tank Assembly - Oil	1
95	94405	. Hose - Oil Pickup	1
96	93998	. Spring - Oil Hose	1
97	92465	. Pickup - Oil	1
98	93856	Plate - Name (PM 310)	1
98	93854	Plate - Name (PM 320)	1
98	93858	Plate - Name (PM 330)	1
99	95206	Plate - Instruction	1
100	-	Powerhead Assembly (Figure 5)	1

① Used on PM 320 models

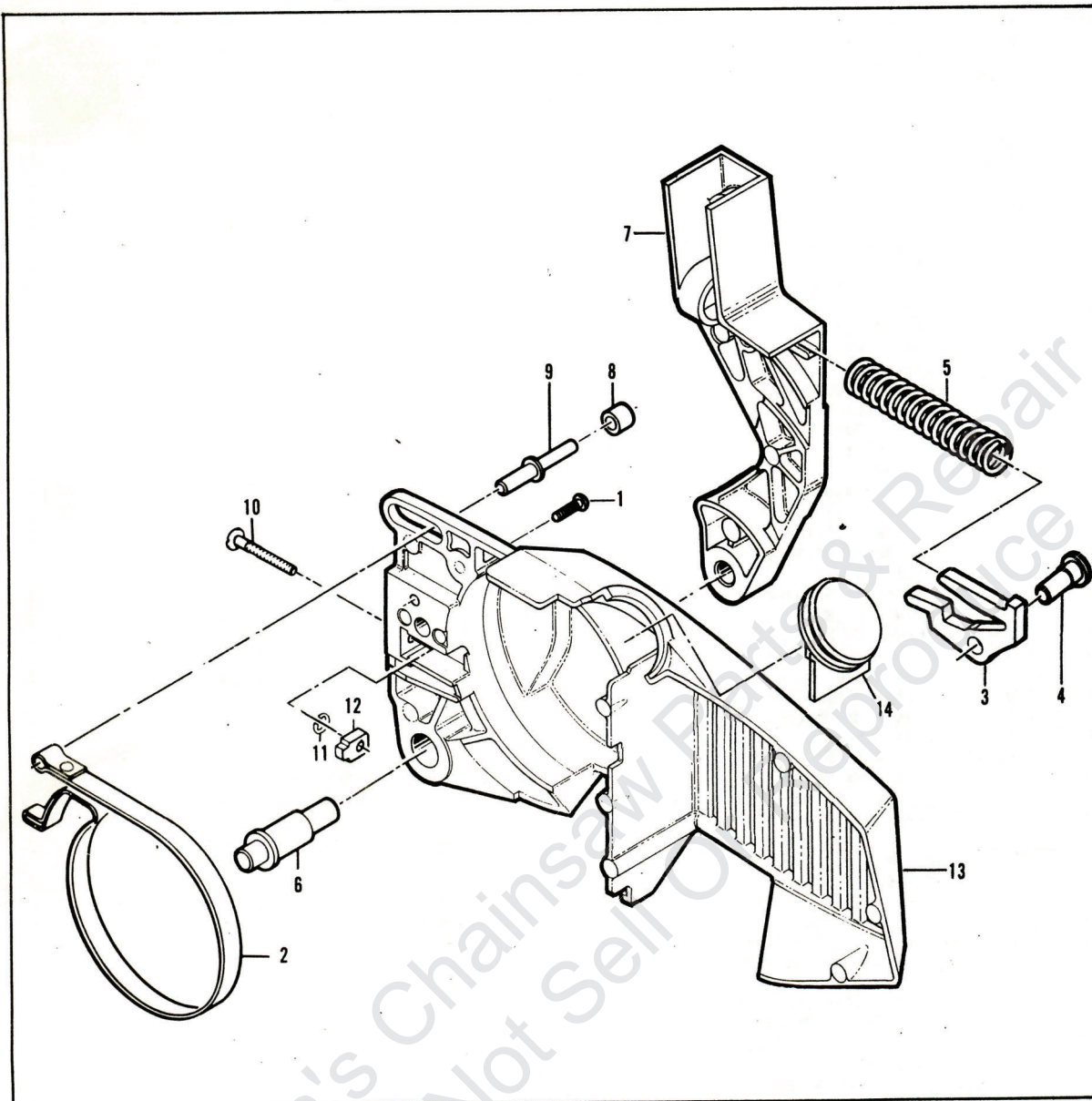
② Used on PM 320, 330, and on PM 310 models with suffix letter A, D, G, H, J, K, M, N and P

③ Used on PM 310 models with suffix letters D, E, F, G, H, K, M and U.

④ Used on PM 330 models with suffix letter J

⑤ Used on PM 310 and 320 models.

Figure 2. CHAIN BRAKE Assembly

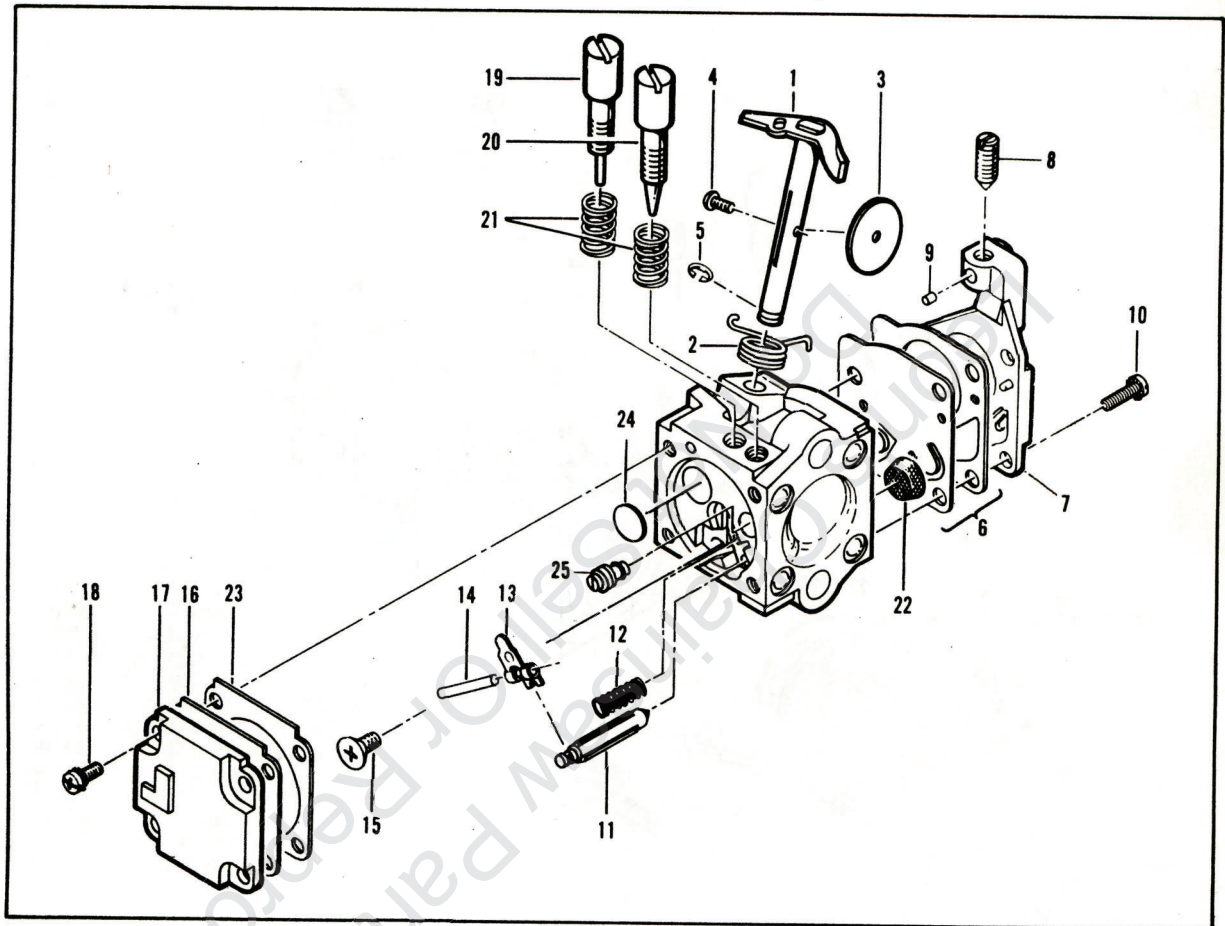


Item No.	Part Number	Description	Units Per Asy.
	214373	CHAIN BRAKE Assembly	1
1	111047	. Screw - Fil hd 8-32 x 5/8	1
2	94709	. Band - Brake	1
3	-215758	. Kit - Latch	1
4	-	. Spring - Compression	1
5	93602	. Pivot - Latch	1
6	92482	. Pivot - Lever	1
7	93159	. Lever - Actuating	1

Item No.	Part Number	Description	Units Per Asy.
8	214368	. Bearing - Roller	1
9	213907	. Pin - Roller	1
10	90658	. Screw - Adjusting	1
11	110907	. Ring - Retaining	1
12	84929	. Nut - Bar Adjusting	1
13	-215589 ①	. Housing - Brake	1
13	94181 ②	. Housing - Brake	1
14	93528A ③	Cover - AUTO-SHARP	1

- ① Used on models with Screw, P/N 111047.
- ② Used on models without Screw, P/N 111047.
- ③ Used on PM 310 and PM 330 models.

Figure 3. Carburetor Assembly.



ITEM NO.	PART NUMBER	DESCRIPTION	UNITS PER ASY.
	94496	Carburetor Assembly (Zama)	1
1	--	. Shaft Asy - Throttle	1
2	--	. Spring - Throttle Return	1
3	--	. Plate - Throttle	1
4	--	. Screw - Plate (M3)*	1
5	--	. "E" Ring	1
6	-- ①②	. Kit - diaphragm & Gaskets	1
7	--	. Cover Asy - Pump	1
8	--	. . Screw - Idle Speed	1
9	--	. . Insert - Friction	1
10	--	. Screw - Pump Cover (M4)*	4
11	-- ①	. Needle - Inlet	1
12	-- ①	. Spring - Lever	1

ITEM NO.	PART NUMBER	DESCRIPTION	UNITS PER ASY.
13	-- ①	. Lever - Inlet Needle	1
14	-- ①	. Pin - Lever	1
15	-- ①	. Screw - Lever Pin (M3)*	1
16	-- ②①	. Diaphragm Asy - Metering	1
17	--	. Cover - Diaphragm	1
18	--	. Screw - Diaphragm Cover(M3)*	4
19	-- ③	. Screw - Idle Adjust	1
20	-- ③	. Screw - Main Adjust	1
21	-- ③	. Spring - Needle	2
22	-- ①	. Screen - Filter	1
23	-- ①	. Gasket - Metering Diaphragm	1
24	-- ①	. Welch Plug	1
25	-- ①	. Orifice - Main Fuel	1

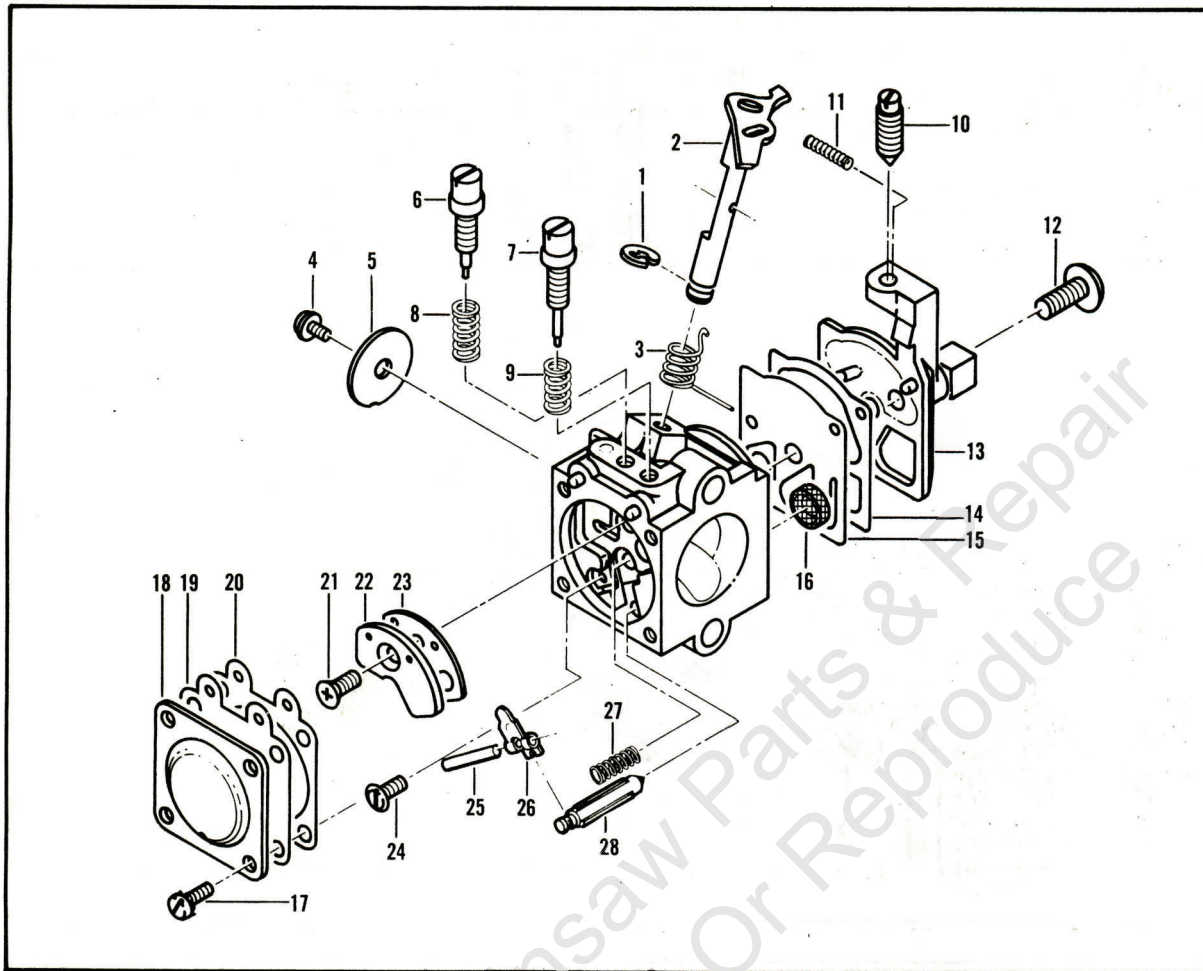
* The "M" denotes metric screw size.

① Contained in Repair Kit, P/N 217081.

② Contained in Gasket/Diaphragm Kit, P/N 217089.

③ Contained in Needle Kit, P/N 216804.

Figure 4. Carburetor Assembly



ITEM NO.	PART NUMBER	DESCRIPTION	UNITS PER ASY.
	94496A	① Carburetor Asy-Walbro (WA-52)	1
1	94749	. Ring-Shaft retainer	1
2	94752	. Shaft Asy - Throttle	1
3	*94765	. Spring-Throttle return	1
4	*83755	. Screw - Valve	1
5	94753	. Valve - Throttle	1
6	*94766	. Needle - Idle adjust	1
7	*94767	. Needle - Hi speed	1
8	*94763	. Spring - Idle needle	1
9	*67502	. Spring-Hi speed needle	1
10	94762	. Screw - Idle adjust	1
11	*67504	. Spring - Friction	1
12	*94760	. Screw - Pump cover	1
13	94751	. Cover - Pump	1

ITEM NO.	PART NUMBER	DESCRIPTION	UNITS PER ASY.
14	**94754	. Gasket - Pump	1
15	**94758	. Diaphragm - Pump	1
16	*94769	. Screen - Inlet	1
17	*80529	. Screw-Diaphragm cover	4
18	94750	. Cover-Metering diaphragm	1
19	**94759	. Diaphragm Asy-Metering	1
20	**94755	. Gasket - Metering diaphragm	1
21	*94761	. Screw-Circuit plate	1
22	*94771	. Plate - circuit	1
23	**94756	. Gasket - circuit	1
24	*67500	. Screw-Metering lever	1
25	*94770	. Pin-Metering lever	1
26	*94772	. Lever - Metering	1
27	*94764	. Spring-Metering lever	1
28	*67491	. Valve - Inlet needle	1
	*94775	Kit-Gasket/Diaphragm	

① One of two carburetors used. Identify carburetor before ordering parts.

* Contained in Repair Kit, P/N 94774.

** Contained in Gasket/Diaphragm Kit, P/N 94775.

Bar & Chain Combinations

PART NUMBER	DESCRIPTION	CHAIN SAW MODEL		
		PM 310	PM 320	PM 330
214919N	Chain - MP 370GL	A, B, E, J, N		E, J, N
214235	Bar - 14" Mini Pro	A, B, E, J, N	A, B, J, P	E, J, N
214656N	Chain - AS 370G		A, B, J, P	E, J, N
214230N	Chain - AS 370G		D, F, U	
214236	Bar - 16" Mini Pro	D, H, M, U	D, F, U	A, B, P, U
214925N	Chain - MP 370GL	D, H, M, U		A, B, P, U

Tools and Accessories

PART NUMBER	DESCRIPTION
214207	Spike
94972	Wrench
93797	Wrench - Screwdriver
214194	Lubri-Gun
91226	Holder - Flywheel
93095	Bracket - AUTO-SHARP
95168	Grinder Assembly - AUTO-SHARP
94365	Kit - Carrying Case, 14" (PM 310/320)
92977	. Scabbard - 14"
94364	Kit - Carrying Case, 16" (PM 310/320)
214202	. Scabbard - 16"
85702	Lubricant-Custom, 6 oz. can
85703	Lubricant-Custom, 6 oz. cans, 6-pack

PART NUMBER	DESCRIPTION
214212	Kit - Tool
95169	Kit - Spark Arrester Screen
94416	Adaptor - Intake (Cyl.)
94415	Adaptor - Intake (Air Box)
68917	Adaptor - Exhaust
85229	Kit - Pressure Test
-215432	Tool - Pressure Test
501334	Tester - Ignition
67537	Loctite
69794	Locquic
63094	Driver - Wrist Pin
110083	R.T.V. Sealant
110706	Tool-Handle/Throttle Trigger Screw

Service Specifications

Displacement	35 cc (2.1 cu. in.)
Bore and Stroke	38 mm x 30.5 mm (1.5 in. x 1.201 in.)
Bearings	Main: Needle
Intake System	3rd Port
Fuel Tank Capacity	330 cc (11.2 oz.)
Chain Oiler Capacity	100 cc (3.4 oz.)
Clutch Engaging Speed	3800 R.P.M.
Idle Speed	2700 to 2900 R.P.M.
Ignition	Electronic
Carburetor	Diaphragm Type, 2-needle Adjustable

Fuel Type	Regular Grade Leaded
Fuel-Oil Mixture	40:1 w/ McCulloch Oil
Filtering System, Fuel	Enclosed Felt Fuel Filter
Filtering System, Air	Felt Air Filter
Lamination Gap	0.3 to 0.4 mm (.011 in. to .015 in.)
Timing	26° B.T.D.C.
Piston Rings	2 Cast Iron Compression Rings
Weight: PM 310	4.49 kg (9.9 lbs.)
PM 320	4.54 kg (10 lbs.)
PM 330	4.71 kg (10.4 lbs.)

**POWER MAC™ 310,
PM 320, PM 330**

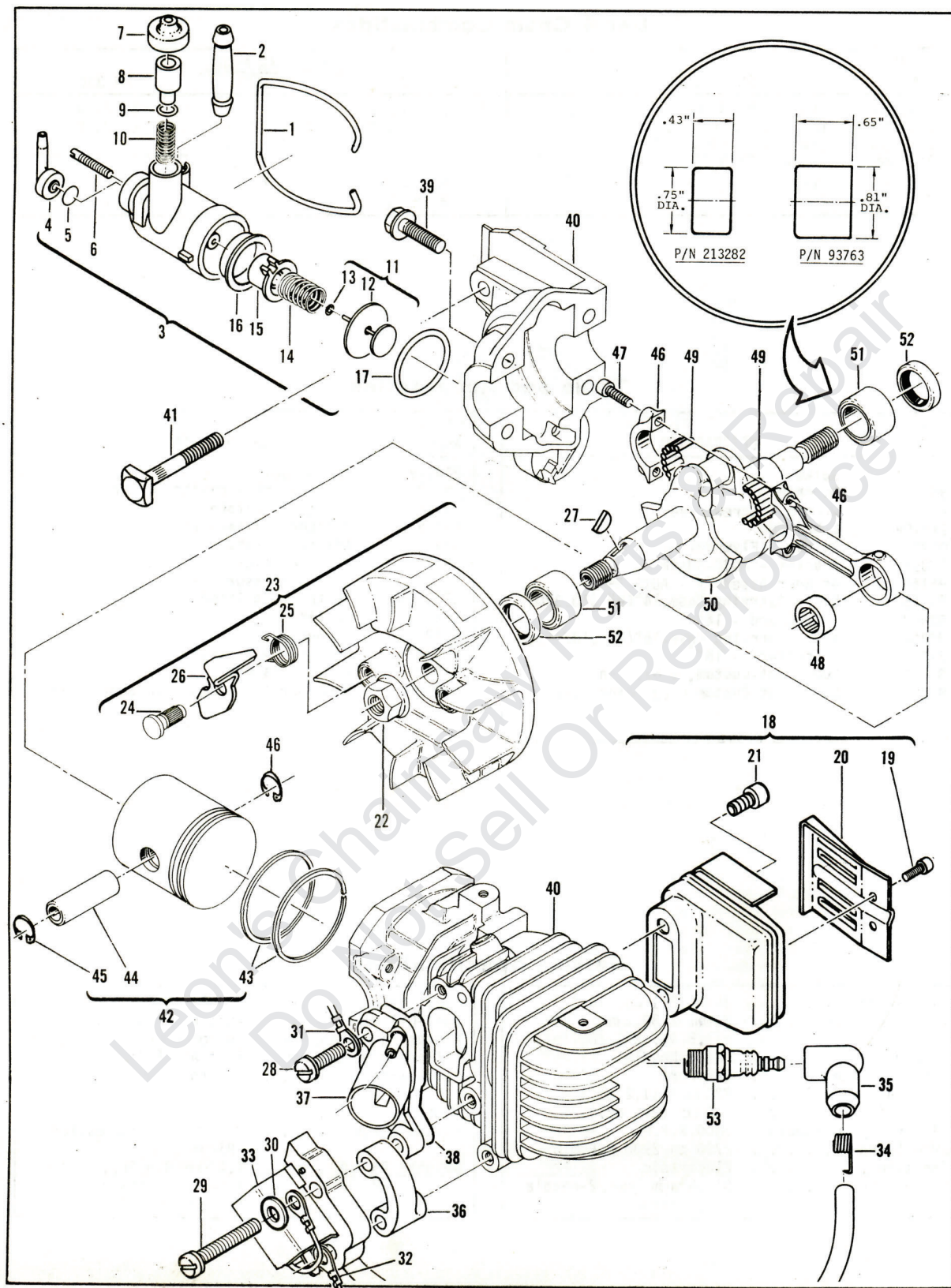


Figure 5. Powerhead Assembly

Figure 5. Powerhead Assembly

ITEM NO.	PART NUMBER	DESCRIPTION	UNITS PER ASY.	ITEM NO.	PART NUMBER	DESCRIPTION	UNITS PER ASY.
1	93150	Bail	1	30	24236	Washer - Special	1
2	-217168	Connector - Outlet	1	31	93514 ②	Wire Assembly - Ground	1
3	-216424	Pump Assembly - Chain Oiler	1	32	93795 ③	Wire Assembly - Ground	1
4	-215196	. Connector - Hose	1	33	-216599	Electronic Ignition Assembly	1
5	94115	. Valve - Oiler	1	34	102556	. Connector - Spark Plug	1
6	93639	. Screw - 6-40 x .800	1	35	95266	. Boot - Spark Plug	1
7	-215151	. Cap - Oil Pump	1	36	214356	Spacer - Coil	1
8	93301	. Plunger - Oil Pump	1	37	-215601	Manifold - Carburetor	1
9	105614	. "O" Ring - .239 x .070	1	38	-92778	Gasket - Insulator	1
10	93632	. Spring	1	39	120097	Screw - Hx W/H M5 x 25	4
11	-- ①	. Piston Assembly - Oiler	1	40	-215943	Cylinder/Crankcase Assembly	1
12	-- ①	. Ring - Oil Pump Piston	1	41	92777	. Bolt - Bar Mounting	1
13	-- ①	. "O" Ring - .114 x .070	1	42	94660	Piston Assembly	1
14	83891	. Spring - Return	1	43	94136	. Ring Set	1
15	-- ①	. Sleeve - Oil Pump	1	44	92836	. Pin - Piston	1
16	-- ①	. Eyelet	1	45	111026	. Ring - Snap	2
17	110653	"O" Ring	1	46	94135	Connecting Rod Assembly	1
18	215411	Muffler/Deflector Assembly	1	47	94654	. Screw - Connecting Rod	2
19	110681	. Screw - Skt hd 10-24 x 1/4	2	48	110984	. Bearing - Needle	1
20	92961	. Deflector - Exhaust	1	49	68095	. Roller - Needle (set of 20)	1
21	215394	. Screw - Special M6	2	50	92750	Crankshaft	1
22	-213169	Nut - Hx Flg M8 x 1.25	1	51	213282 ④	Bearing - Crankshaft	2
23	-94737	Flywheel/Pawl Assembly	1	52	83859	Seal - Crankshaft Oil	2
24	-216984	. Pin - Starter Pawl	2	51	93763 ④	Sleeve Assembly - Bearing	1
25	-216982	. Spring - Pawl	2	52	83859	. Seal - Crankshaft Oil	2
26	-216983	. Pawl - Starter	2	53	93018	Spark Plug (B, E)	1
27	102164	Key - Woodruff	1	53	214223	Spark Plug (A, D, F, G, H, J, K, M, N, P, U)	1
28	120027	Screw - Pan hd M5 x 18 (SEMS)	1				
29	120112	Screw - Skt hd M5 x 40	2				


① Contained in Oil Pump Repair Kit, P/N 216426.

② Used on PM 310 and PM 320 models.

③ Used on PM 330 models.

④ One of two types of crankshaft bearing used. Replacement crankshaft bearing MUST be the same as originally used on unit. Identify parts before ordering. All service replacement cylinders will be manufactured to use ONLY Crankshaft Bearing, P/N 213282.

*Flywheel nut torque should be 190 to 200 pound x inches (21.5 to 22.6 N.m.)

 **McCULLOCH**



● MANUFACTURING ● SALES ● SERVICE ●

McCULLOCH

P.O. Box 92180, Los Angeles, CA 90009

Copyright - McCulloch,

To answer service-related questions and to solve common consumer problems quickly, we invite you to call this toll-free hot-line:

Arizona residents please call collect (602)453-3681

(800) 423-6302

Leon's Chainsaw Parts & Repair
Do Not Sell Or Reproduce