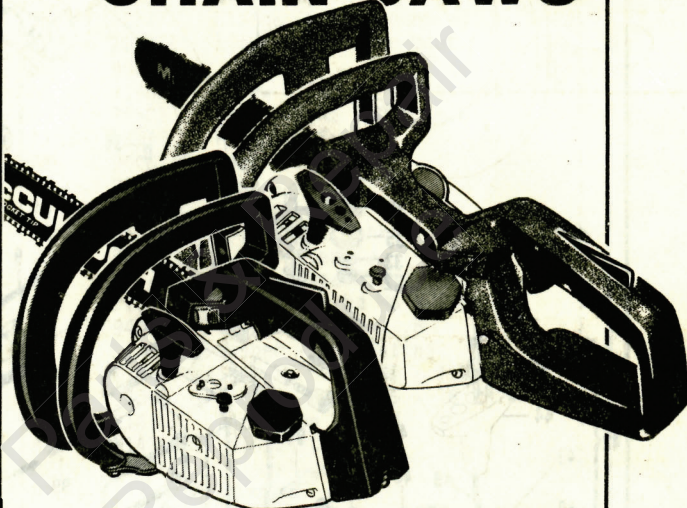


ILLUSTRATED PARTS LIST

POWER MAC 310, 320, 330, 340 CHAIN SAWS

| PM 310 | | PM 320 | | PM 330 | | PM 340 | |
|---------|----------------------|---------|----------------------|---------|----------------------|---------|----------------------|
| MODELS | SERIAL NUMBER PREFIX | MODELS | SERIAL NUMBER PREFIX | MODELS | SERIAL NUMBER PREFIX | MODELS | SERIAL NUMBER PREFIX |
| 600042A | 11-, 12- | 600021B | 11-, 12- | 600043B | 11-, 12- | 600044B | 11- |
| 600042B | 11-, 12- | 600021C | 11-, 12- | 600043C | 11-, 12- | 600044C | 11-, 12- |
| 600042C | 11-, 12- | 600021E | 11- | 600043G | 11-, 12- | 600044D | 11-, 12- |
| 600042E | 11- | 600021F | 11- | 600043J | 11-, 12- | 600044E | 11- |
| 600042F | 11-, 12- | 600021G | 11-, 12- | 600043P | 12- | 600044G | 11-, 12- |
| 600042G | 11-, 12- | 600021H | 11-, 12- | 600043U | 11-, 12- | 600044J | 11- |
| 600042J | 11-, 12- | 600021J | 11- | | | 600044U | 11-, 12- |
| 600042L | 11-, 12- | 600021K | 11-, 12- | | | | |
| 600042U | 11-, 12- | 600021L | 12- | | | | |
| | | 600021P | 11-, 12- | | | | |
| | | 600021U | 11-, 12- | | | | |



August 1981

McCulloch chain saws are identified by a model number (for example, 600021) followed by a suffix letter (A, B, C, etc.) stamped on the identification plate attached to the saw. Suffix letters denote variations in parts or assemblies in the manufacture of the saw.

Part numbers listed in this IPL which have a suffix letter or letters following the description, indicate the part is used only on the model(s) identified by the letter or letters.

Part numbers and descriptions without suffix letter or letters apply to all versions of the chain saw model.

Part numbers which have one or more dots (.) preceding their descriptions may be ordered individually, but they are also included in the kit or assembly whose description begins directly above the dot(s).

Part numbers in this IPL which were not in the previous IPL covering these saws, are indicated by a dash (-) preceding the new part number.

The policy of McCulloch Corporation is one of continual improvement in design, manufacturing and engineering advancement wherever possible to assure still finer two-cycle power tools. Hence, specifications, equipment, colors, design and manufacturer's suggested list prices are subject to change without notice and McCulloch Corporation reserves the right to make such changes without prior notification or obligation to backfit or supply backfit components for units previously shipped from the factory.

- CONTENTS -

| | Page |
|--|------|
| Figure 1. General | 2 |
| Figure 2. CHAIN BRAKE Assembly | 4 |
| Figure 3. Carburetor Assembly | 5 |
| Figure 4. Carburetor Assembly | 6 |
| Figure 5. Powerhead Assembly | 8 |
| Figure 6. Handle Assemblies | 10 |
| Service Specifications | 7 |
| Bar & Chain Combinations | 7 |
| Tools and Accessories | 7 |



Power Mac 310, 320, 330, 340

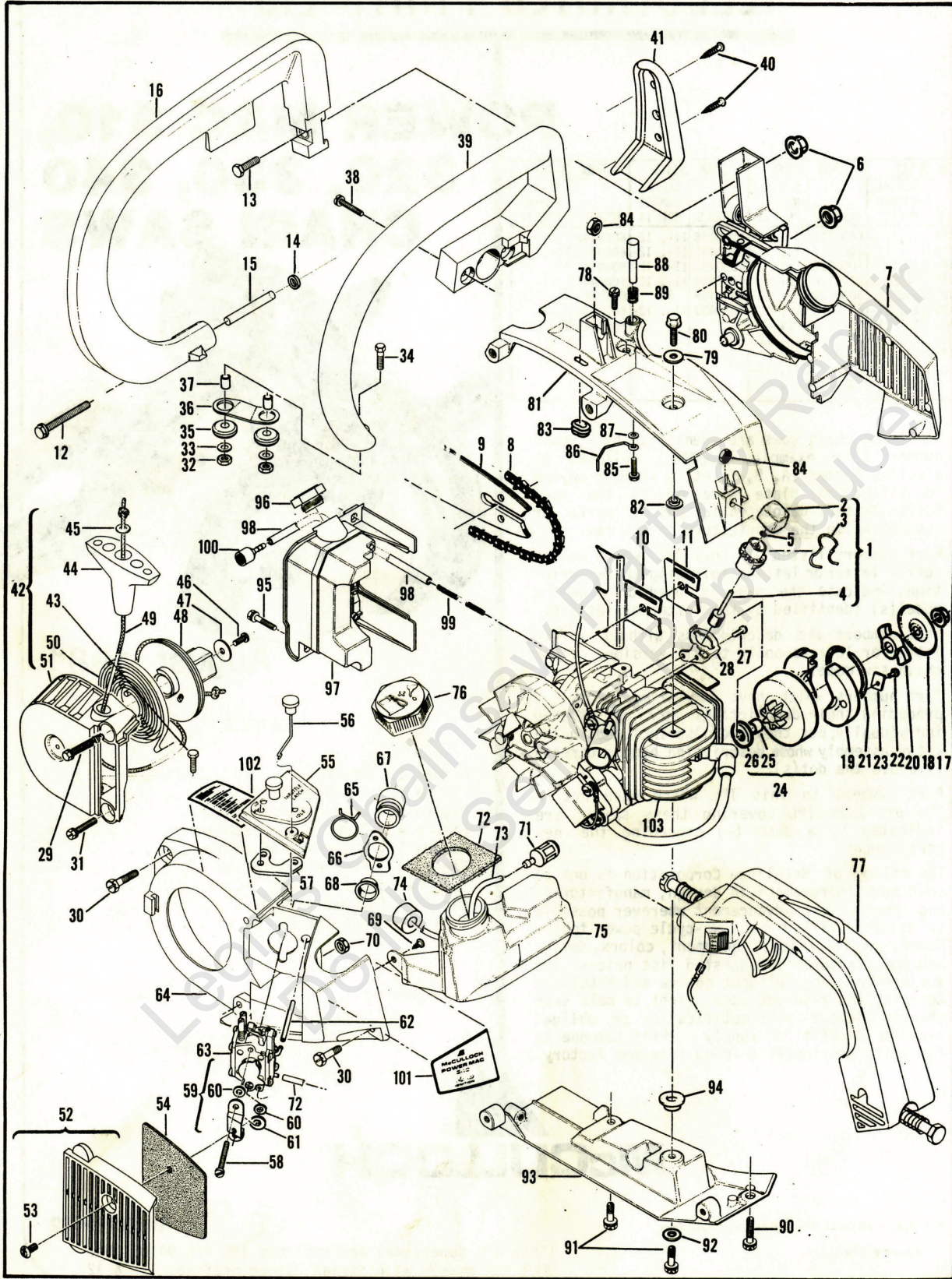


Figure 1. General.

Figure 1. General.

| ITEM NO. | PART NUMBER | DESCRIPTION | UNITS PER ASY. |
|----------|-------------|---------------------------------|----------------|
| 1 | 94951 | ① Grinder Assembly - AUTO SHARP | 1 |
| 2 | 92582 | ① . Knob | 1 |
| 3 | 94024 | ① . Bail - AUTO SHARP | 1 |
| 4 | 95168 | ① . Wheel Assembly - Grinding | 1 |
| 5 | 110968 | ① . Ring - Retaining | 1 |
| 6 | 120029 | Nut - Hx flg M6.3 x 1.0 | 2 |
| 7 | - - | CHAIN BRAKE Assembly (Fig. 2) | 1 |
| 8 | - - | Chain (see Page 11) | 1 |
| 9 | - - | Bar (see Page 11) | 1 |
| 10 | 214207 | ② Spike | 1 |
| 11 | 93148 | ② Spacer - Bar pad | 1 |
| 12 | 213103 | Screw - Hx M5 x 50 ST (SEMS) | 1 |
| 13 | 120028 | Screw - Hx M6.3 x 20 | 1 |
| 14 | 120045 | Washer - M5 | 1 |
| 15 | 93153 | Spacer - Wraparound | 1 |
| 16 | 93021A | Lever - Wraparound | 1 |
| 17 | 94244 | Nut - Clutch | 1 |
| 18 | 94243 | Plate - Dust | 1 |
| 19 | 213277 | Clutch Assembly | 1 |
| 20 | 94242 | . Rotor | 1 |
| 21 | 93608 | . Spring Assembly - Clutch | 1 |
| 22 | 110957 | . Rivet - Fl 1/8 x .547 | 2 |
| 23 | 85064 | . Plate - Clutch shoe | 2 |
| 24 | -214390 | Drum/Sprocket/Bearing Assembly | 1 |
| 25 | 91222 | . Bearing | 1 |
| 26 | -215259 | . Washer - Sprocket | 1 |
| 27 | 120025 | ① Screw - Pan M5 x 10 | 2 |
| 28 | 93095 | ① Bracket - AUTO SHARP | 1 |
| 29 | 120096 | Screw - WH M5 x 55 ST | 1 |
| 30 | 120095 | Screw - WH M5 x 20 ST | 2 |
| 31 | 120098 | Screw - WH M5 x 18 | 1 |
| 32 | 120044 | Nut - Hx M5 Lock | 2 |
| 33 | 120045 | Washer - M5 | 2 |
| 34 | 120041 | Screw - Hx M5 x 22 | 1 |
| 35 | 110989 | Grommet | 2 |
| 36 | 93152 | Link | 1 |
| 37 | 93057 | Spacer - Mount | 2 |
| 38 | 120036 | Screw - Pan M4 x 25 (SEMS) | 2 |
| 39 | 92983A | Frame | 1 |
| 39 | 95137 | ④ Frame Assembly | 1 |
| 40 | 111011 | ④ . Screw - PM 10-16 x 7/8 | 2 |
| 41 | 95141 | ④ . Weight - Frame | 1 |
| 42 | 94325 | Kit - Starter | 1 |
| 43 | 120041 | . Screw - Hx M5 x 22 | 1 |
| 44 | 91255 | . Kit - Starter handle | 1 |
| 45 | 105490 | . Washer - Starter handle | 1 |
| 46 | 110041 | . Screw - Pan 8-32 x .5 | 1 |
| 47 | 68497 | . Washer | 1 |
| 48 | 213261 | . Drum/Rope Assembly | 1 |
| 49 | 83203 | . . Rope - Starter | 1 |
| 50 | 83078 | . Spring - Starter rewind | 1 |
| 51 | 93790A | . Housing Assembly - Starter | 1 |
| 52 | 93527 | Cover Assembly - Air filter | 1 |
| 53 | 93626 | . Screw - Pan M5 x 10 | 1 |
| 54 | 94970 | Filter - Air | 1 |

| ITEM NO. | PART NUMBER | DESCRIPTION | UNITS PER ASY. |
|----------|-------------|-------------------------------|----------------|
| 55 | 94608 | Cover Assembly - Air box | 1 |
| 56 | 214316 | . Rod Assembly - Choke | 1 |
| 57 | 94721 | . Seal - Air | 1 |
| 58 | 120049 | Screw - Pan M5 x 40 | 2 |
| 59 | 94905 | Kit - Choke plate & bracket | 1 |
| 60 | - - | . Washer - Flat | 2 |
| 61 | - - | . Washer - Wavy | 1 |
| 62 | 93151 | Hose - Pulse | 1 |
| 63 | - - | Carburetor (Fig. 3, 4) | 1 |
| 64 | 93101A | Housing - Fan | 1 |
| 65 | 94302 | Clip - Spring | 1 |
| 66 | 92747 | Flange - Carb mounting | 1 |
| 67 | 213211 | Kit - Carburetor boot | 1 |
| 68 | 95656 | . Eyelet | 1 |
| 69 | 111002 | Screw - Pan hd 10-16 x .5 | 1 |
| 70 | 94501 | Nut - Hx M5 x 0.8 thin | 1 |
| 71 | 93720 | Pickup - Fuel | 1 |
| 72 | 94491 | Seal - Fuel vent | 1 |
| 73 | 93997 | Hose - Fuel | 1 |
| 74 | 90869 | Filter - Vent | 1 |
| 75 | 95301 | Kit - Fuel tank | 1 |
| 76 | 95300 | . Cap Assembly - Fuel | 1 |
| 77 | - - | Handle Assemblies (Fig. 6) | 1 |
| 78 | 213369 | ⑤ Screw - Hx hd M6 x 1 WH | 1 |
| 78 | 94449 | ⑥ Screw - WH M5 x .8 | 1 |
| 79 | 213370 | ⑤ Washer - Insulating | 1 |
| 80 | 213369 | ⑤ Screw - Hx hd M6 x 1 WH | 1 |
| 80 | 94032 | ⑥ Screw - Hx hd M5 x 16 PH WH | 1 |
| 81 | 214152 | Kit - Top shroud | 1 |
| 82 | 214350 | ⑤ . Insulator | 1 |
| 82 | 214351 | ⑥ . Insulator | 1 |
| 83 | 94192 | ⑦ Grommet | 1 |
| 84 | 120034 | Nut - Hx M6.3 x 1.0 | 2 |
| 85 | 110999 | Screw - Hx hd 6-20 x 5/8 WH | 1 |
| 86 | 94540 | Rod - Oiler | 1 |
| 87 | 100001 | Washer - Plain | 1 |
| 88 | 93304A | Knob - Oiler | 1 |
| 89 | 93634A | Spring - Compression | 1 |
| 90 | 120095 | Screw - WH M5 x 20 ST | 1 |
| 91 | 213369 | ⑤ Screw - Hx hd M6 x 1 WH | 2 |
| 91 | 94449 | ⑥ Screw - WH M5 x .8 | 2 |
| 92 | 213370 | ⑤ Washer - Insulating | 1 |
| 93 | 214154 | Kit - Bottom shroud | 1 |
| 94 | 214350 | ⑤ . Insulator | 1 |
| 94 | 214351 | ⑥ . Insulator | 1 |
| 95 | 120095 | Screw - WH M5 x 20 ST | 2 |
| 96 | 93274 | Cap - Oil | 1 |
| 97 | 93506A | Tank Assembly - Oil | 1 |
| 98 | 94405 | . Hose - Oil pickup | 1 |
| 99 | 93998 | . Spring - Oil hose | 1 |
| 100 | 92465 | . Pickup - Oil | 1 |
| 101 | 93856 | Plate - Name (PM 310) | 1 |
| 101 | 93854 | Plate - Name (PM 320) | 1 |
| 101 | 93958 | Plate - Name (PM 330) | 1 |
| 101 | 93859 | Plate - Name (PM 340) | 1 |
| 102 | 95206 | Plate - Instruction | 1 |
| 103 | - - | Powerhead Assembly (Fig. 5) | 1 |

① Used on PM 320 & PM 340 models.

② Used on PM 320, 330, 340 models, and on PM 310 models with suffix letter A, B and J.

③ Used on PM 310 models with suffix letters C, E, F, G, and U.

④ Used on PM 330 & PM 340 models with suffix letter J.

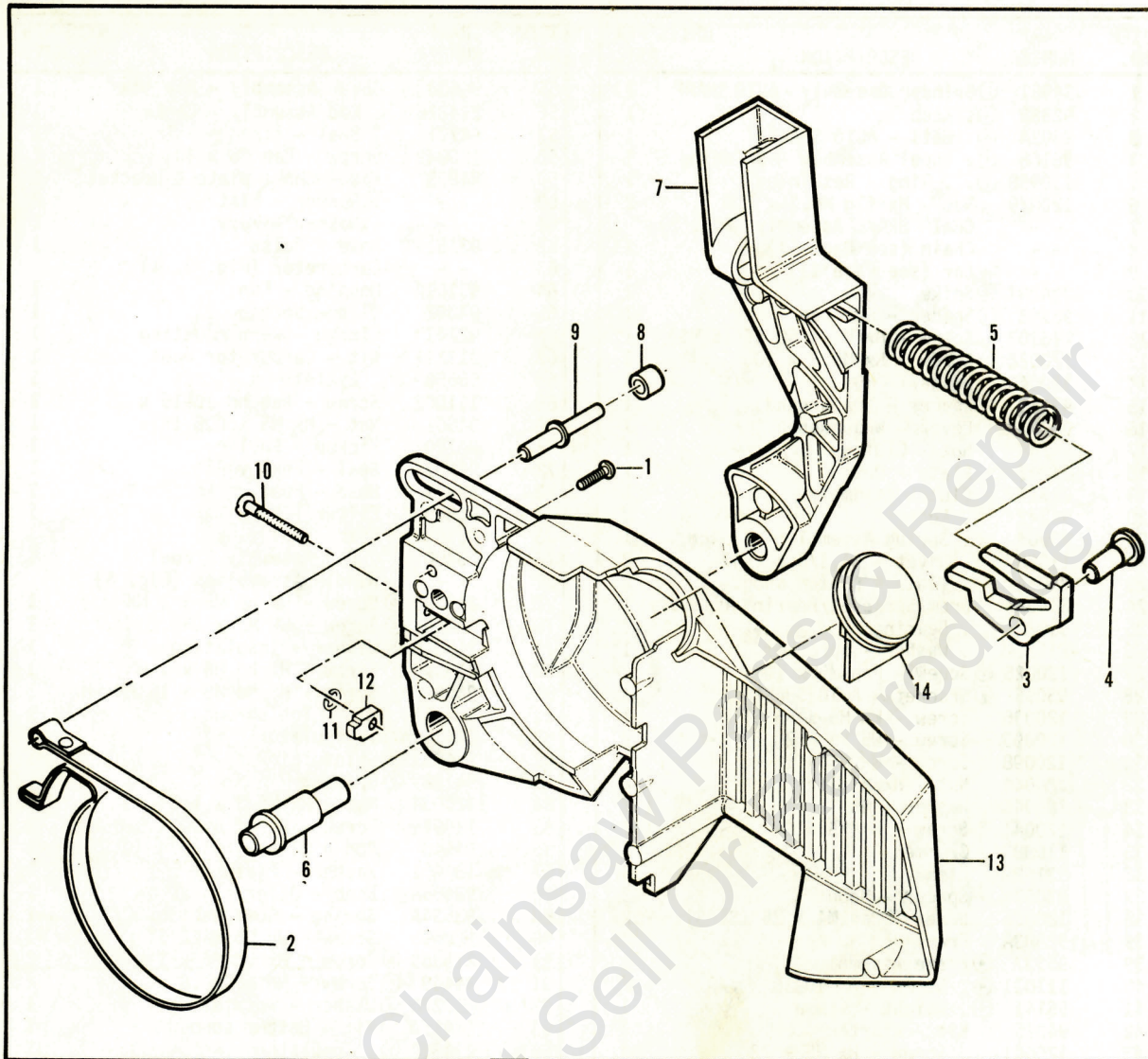
⑤ Used on models with serial number prefix 12-.

⑥ Used on models with serial number prefix 12-.

⑦ Used on models with serial number prefix 11-.

Power Mac 310, 320, 330, 340

Figure 2. CHAIN BRAKE Assembly.



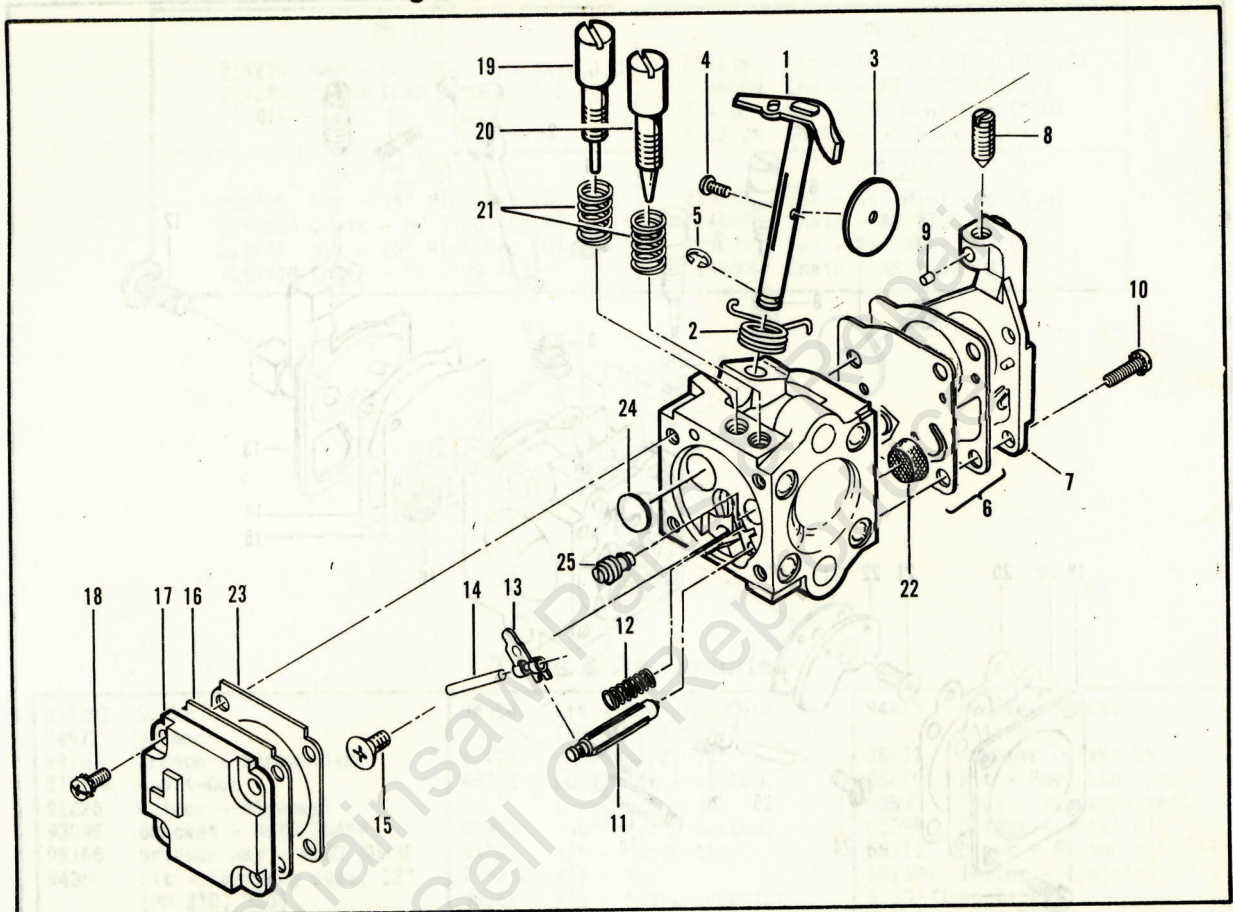
| Item No. | Part Number | Description | Units Per Asy. |
|----------|-------------|--------------------------|----------------|
| | 214373 | CHAIN BRAKE Assembly | 1 |
| 1 | 111047 | ① . Screw-Pan 8-32 x 5/8 | 1 |
| 2 | 94709 | ② . Band - Brake | 1 |
| 2 | 92487 | ③ . Band - Brake | 1 |
| 3 | 94006 | ② . Latch | 1 |
| 3 | 93092 | ③ . Latch | 1 |
| 4 | 93602 | . Pivot - Latch | 1 |
| 5 | 94007 | ② . Spring - Compression | 1 |
| 5 | 93140 | ③ . Spring - Compression | 1 |

| Item No. | Part Number | Description | Units Per Asy. |
|----------|-------------|-----------------------|----------------|
| 6 | 92482 | . Pivot - Lever | 1 |
| 7 | 93159 | . Lever - Actuating | 1 |
| 8 | 214368 | . Bearing - Roller | 1 |
| 9 | 213907 | . Pin - Roller | 1 |
| 10 | 90658 | . Screw - Adjusting | 1 |
| 11 | 110907 | . Ring - Retaining | 1 |
| 12 | 84929 | . Nut - Bar Adjusting | 1 |
| 13 | 94173 | ② . Housing - Brake | 1 |
| 13 | 94181 | ③ . Housing - Brake | 1 |
| 14 | 93528A | ④ Cover - AUTO SHARP | 1 |

- ① Not used on some early models.
- ② Used on models with Screw, P/N 111047.
- ③ Used on models without Screw, P/N 111047.
- ④ Used on PM 310 and PM 330 models.

Power Mac 310, 320, 330, 340

Figure 3. Carburetor Assembly.



| ITEM NO. | PART NUMBER | DESCRIPTION | UNITS PER ASY. |
|----------|-------------|-----------------------------|----------------|
| | 94496 | ① Carburetor Asy (Zama) | 1 |
| 1 | 94205 | . Shaft Asy - Throttle | 1 |
| 2 | 91802 | . Spring - Throttle return | 1 |
| 3 | 91803 | . Plate - Throttle | 1 |
| 4 | 91804 | . Screw - Plate (M3)* | 1 |
| 5 | 91805 | . "E" Ring | 1 |
| 6 | 91824 | ② Kit - Diaphragm & Gaskets | 1 |
| 7 | 94206 | . Cover Asy - Pump | 1 |
| 8 | | . . Screw - Idle speed | 1 |
| 9 | | . . Insert - Friction | 1 |
| 10 | 91809 | . Screw - Pump cover (M4)* | 4 |
| 11 | 91810 | ② Needle - Inlet | 1 |
| 12 | 91811 | ② Spring - Lever | 1 |

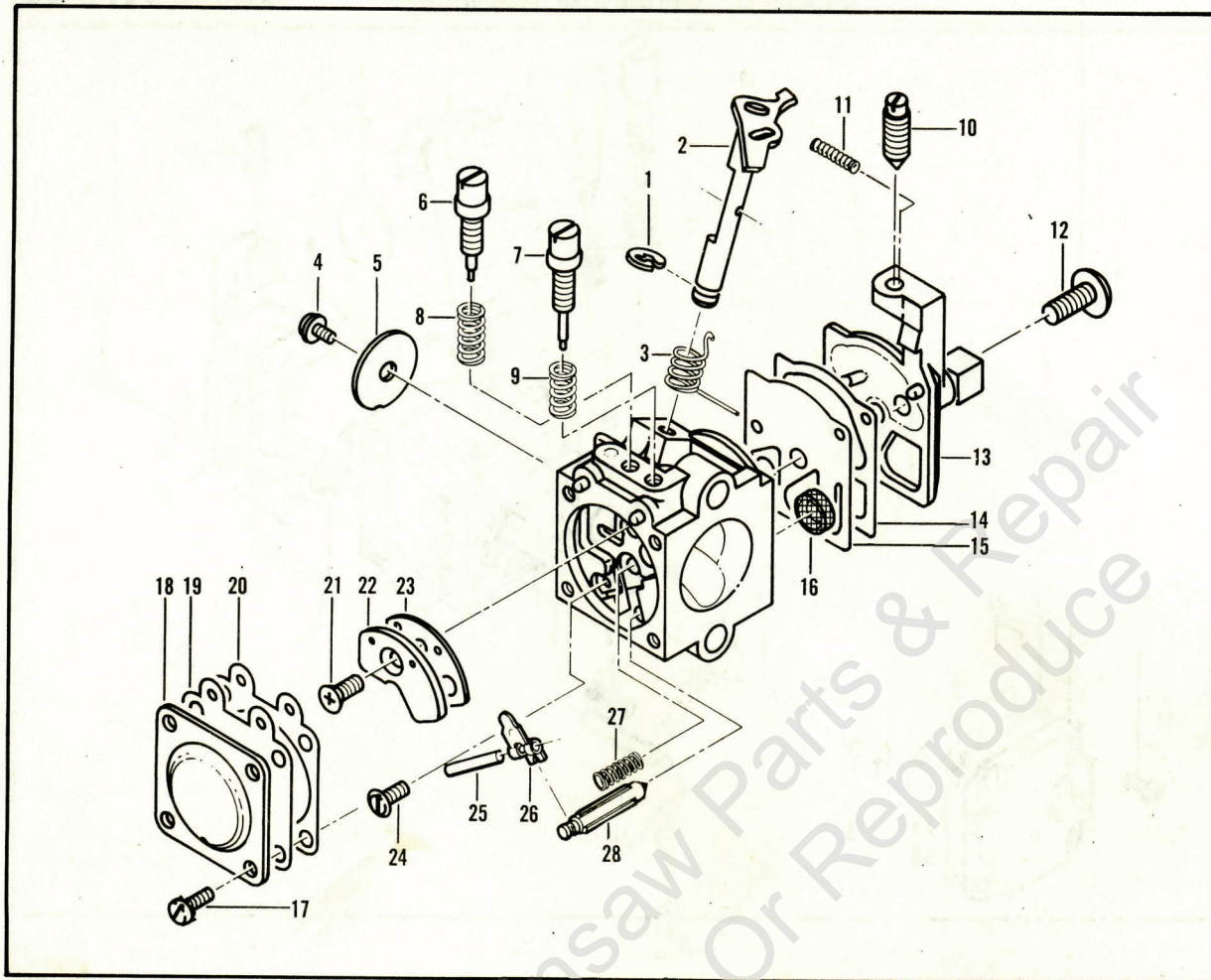
| ITEM NO. | PART NUMBER | DESCRIPTION | UNITS PER ASY. |
|----------|-------------|----------------------------------|----------------|
| 13 | 91812 | ② Lever - Inlet needle | 1 |
| 14 | 91813 | ② Pin - Lever | 1 |
| 15 | 91814 | . Screw - Lever pin (M3)* | 1 |
| 16 | 91815 | ② Diaphragm Asy - Metering | 1 |
| 17 | 91816 | . Cover - Diaphragm | 1 |
| 18 | 91817 | . Screw - Diaphragm cover (M3)*4 | 4 |
| 19 | 94209 | . Screw - Idle adjust | 1 |
| 20 | 94208 | . Screw - Main adjust | 1 |
| 21 | 91819 | ② Spring - Needle | 2 |
| 22 | 91820 | ② Screen - Filter | 1 |
| 23 | 91821 | ② Gasket - Metering diaphragm | 1 |
| 24 | 92097 | . Welsh Plug | 1 |
| 25 | 93950 | . Orifice - Main fuel | 1 |

① One of two carburetors used. Identify carburetor before ordering parts.

② Contained in Repair Kit, P/N 94210.

* The "M" denotes metric screw size.

Figure 4. Carburetor Assembly



| ITEM NO. | PART NUMBER | DESCRIPTION | UNITS PER ASY. |
|----------|-------------|---------------------------------|----------------|
| | 94496A | ① Carburetor Asy-Walbro (WA-52) | 1 |
| 1 | 94749 | . Ring-Shaft retainer | 1 |
| 2 | 94752 | . Shaft Asy - Throttle | 1 |
| 3 | *94765 | . Spring-Throttle return | 7 |
| 4 | *83755 | . Screw - Valve | 1 |
| 5 | 94753 | . Valve - Throttle | 1 |
| 6 | *94766 | . Needle - Idle adjust | 1 |
| 7 | *94767 | . Needle - Hi speed | 1 |
| 8 | *94763 | . Spring - Idle needle | 1 |
| 9 | *67502 | . Spring-Hi speed needle | 1 |
| 10 | 94762 | . Screw - Idle adjust | 1 |
| 11 | *67504 | . Spring - Friction | 1 |
| 12 | *94760 | . Screw - Pump cover | 1 |
| 13 | 94751 | . Cover - Pump | 1 |

| ITEM NO. | PART NUMBER | DESCRIPTION | UNITS PER ASY. |
|----------|-------------|-------------------------------|----------------|
| 14 | **94754 | . Gasket - Pump | 1 |
| 15 | **94758 | . Diaphragm - Pump | 1 |
| 16 | *94769 | . Screen - Inlet | 1 |
| 17 | *80529 | . Screw-Diaphragm cover | 4 |
| 18 | 94750 | . Cover-Metering diaphragm | 1 |
| 19 | **94759 | . Diaphragm Asy-Metering | 1 |
| 20 | **94755 | . Gasket - Metering diaphragm | 1 |
| 21 | *94761 | . Screw-Circuit plate | 1 |
| 22 | *94771 | . Plate - circuit | 1 |
| 23 | **94756 | . Gasket - circuit | 1 |
| 24 | *67500 | . Screw-Metering lever | 1 |
| 25 | *94770 | . Pin-Metering lever | 1 |
| 26 | *94772 | . Lever - Metering | 1 |
| 27 | *94764 | . Spring-Metering lever | 1 |
| 28 | *67491 | . Valve - Inlet needle | 1 |
| | *94775 | Kit-Gasket/Diaphragm | |

① One of two carburetors used. Identify carburetor before ordering parts.

* Contained in Repair Kit, P/N 94774.

** Contained in Gasket/Diaphragm Kit, P/N 94775.

Power Mac 310, 320, 330, 340

Bar & Chain Combinations

| PM 310 | | PM 320 | |
|---------|------------------------------|---------|----------------------------|
| 214235 | Bar - 14" Mini Pro (A,B,J,U) | 214235 | Bar - 14" Mini Pro (B,J,P) |
| 214229N | Chain - MP 370G (A,B,J,U) | 214656N | Chain - AS 370G (B,J,P) |
| | | 214236 | Bar - 16" Mini Pro (F,U) |
| | | 214230N | Chain - AS 370G (F,U) |
| PM 330 | | PM 340 | |
| 214235 | Bar - 14" Mini Pro (B, J) | 214235 | Bar - 14" Mini Pro (B,J) |
| 214229N | Chain - MP 370G (B, J) | 214656N | Chain - AS 370G (B,J) |
| 214236 | Bar - 16" Mini Pro (U) | 214236 | Bar - 16" Mini Pro (U) |
| 214241N | Chain - MP 370G (U) | 214230N | Chain - AS 370G (U) |

Tools & Accessories

| | | | | | |
|--------|--|--------|--|--------|--------------------------------------|
| 214207 | Spike | 94364 | Kit - Carrying case, 16" (PM 310, 320) | 94415 | Adapter - Intake (Ajr Box) |
| 94972 | Scrench | 214202 | . Scabbard, 16" | 68917 | Adapter - Exhaust |
| 93797 | Wrench - Screwdriver | 85702 | Lubricant - Custom, 6 oz. can | 85229 | Kit - Fuel tank plug |
| 214194 | Lubri-Gun | 85703 | Lubricant - Custom, | 90533 | Tool - Pressure test |
| 91226 | Holder - Flywheel | 94355 | Kit - Woodcutter | 63094 | Driver - Wrist pin |
| 93095 | Bracket - AUTO SHARP | 214212 | Kit - Tool | 68911 | Block - Piston holding |
| 95168 | Grinder Asy - AUTO SHARP | 95169 | Kit - Spark arrester screen | 501334 | Tester - Ignition |
| 94366 | Kit - Carrying case, 12" (PM 310, 320) . Scabbard, 12" | 94416 | Adapter - Intake (cyl.) | 67537 | Loctite |
| 94365 | Kit - Carrying case, 14" (PM 310, 320) | | | 69794 | Loquic |
| 214201 | (PM 310, 320) | | | 110083 | R.T.V. Sealant |
| 92977 | . Scabbard, 14" | | | 110706 | Tool - Handle/Throttle trigger screw |

Service Specifications

| | | | |
|-----------------------|-------------------------------------|------------------------|-------------------------------------|
| Displacement | 35cc (2.1 cu. in.) | Fuel Type | Regular Grade Leaded |
| Bore and Stroke | 38mm x 30.5mm (1.5 in. x 1.201 in.) | Fuel-Oil Mixture | 40:1 w/ McCulloch Oil |
| Bearings | Main: Needle | Filtering System, Fuel | Enclosed Felt Fuel Filter |
| Intake System | Third Port | Filtering System, Air | Felt Air Filter |
| Fuel Tank Capacity | 330cc (11.2 oz.) | Lamination Gap | 0.3 to 0.4mm (.011 in. to .015 in.) |
| Chain Oiler Capacity | 100cc (3.4 oz.) | Timing | 26° B.T.D.C. |
| Clutch Engaging Speed | 3800 R.P.M. | Piston Rings | 2 Cast Iron Compression Rings |
| Idle Speed | 2700 to 2900 R.P.M. | Weight: PM 310 | 4.49kg (9.9 lbs.) |
| Ignition | Electronic | PM 320 | 4.54kg (10 lbs.) |
| Carburetor | Diaphragm Type, 2 needle Adjustable | PM 330 | 4.71kg (10.4 lbs.) |
| | | PM 340 | 4.76kg (10.5 lbs.) |

**Power Mac 310,
320, 330, 340**

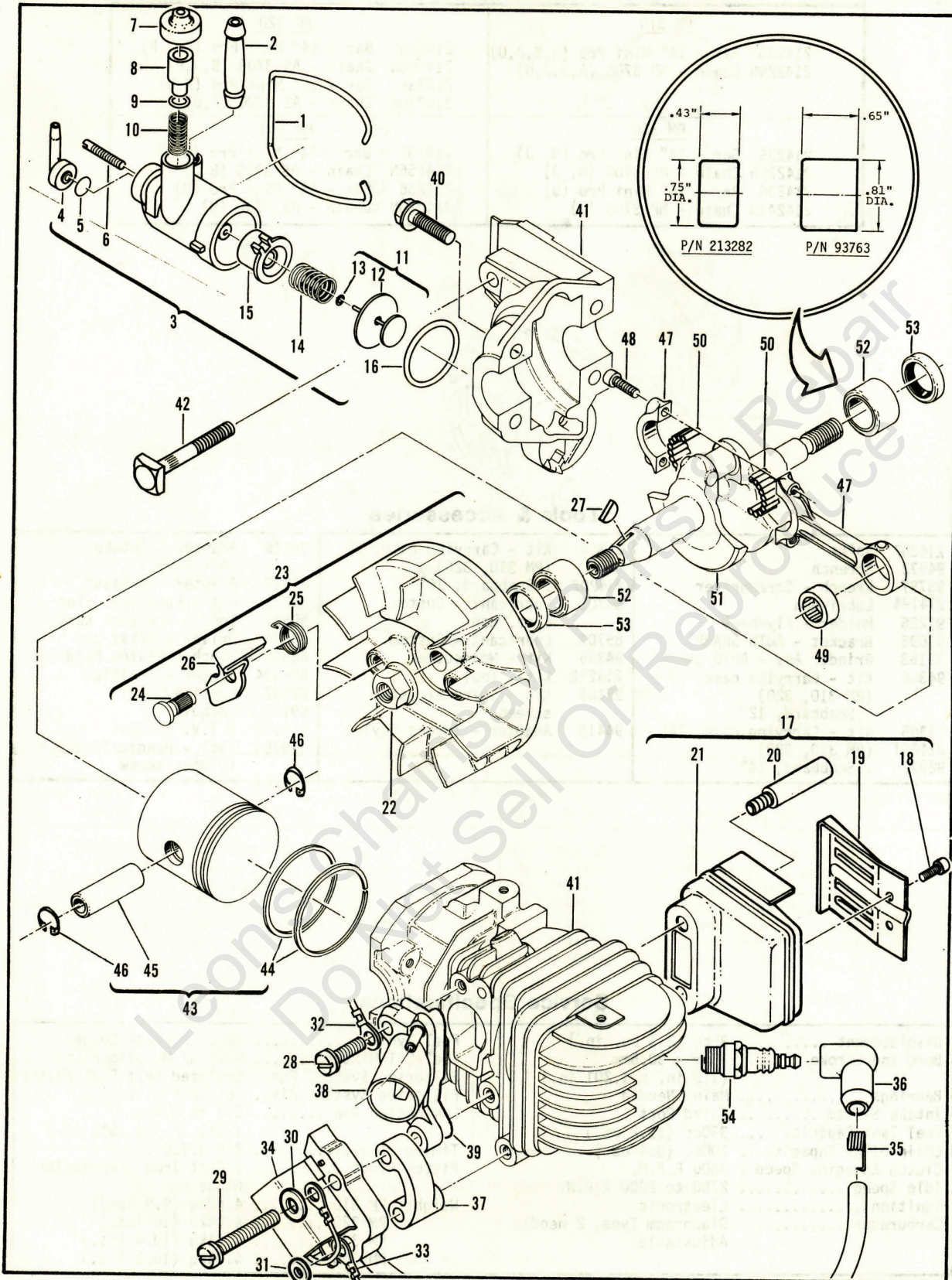


Figure 5. Powerhead Assembly

Power Mac 310, 320, 330, 340

Figure 5. Powerhead Assembly.

| ITEM NO. | PART NUMBER | DESCRIPTION | UNITS PER ASY. | ITEM NO. | PART NUMBER | DESCRIPTION | UNITS PER ASY. |
|----------|-------------|--------------------------------|----------------|----------|-------------|-------------------------------|----------------|
| 1 | 93150 | Bail | 1 | 27 | 102164 | Key - Woodruff | 1 |
| 2 | 83898 | Connector - Outlet | 1 | 28 | 120027 | Screw - Pan M5 x 18 (SEMS) | 1 |
| 3 | 93503 | Pump Assembly - Chain oiler | 1 | 29 | 120112 | Screw - Skt hd M5 x 40 | 2 |
| 4 | 93630 | . Connector - Hose | 1 | 30 | 24236 | Washer - Special | 2 |
| 5 | 94115 | . Valve - Oiler | 1 | 31 | 214279 | Washer - Tab | 1 |
| 6 | 93639 | . Screw - 6-40 x .800 | 1 | 32 | 93514A | ③ Wire Assembly - Ground | 1 |
| 7 | 62262 | . Cap - Oil pump | 1 | 33 | 93795 | ④ Wire Assembly - Ground | 1 |
| 8 | 93301 | . Plunger - Oil pump | 1 | 34 | 95590 | Electronic Ignition Assembly | 1 |
| 9 | 105614 | . "O" Ring - .239 x .070 | 1 | 35 | 102556 | . Connector - Spark plug | 1 |
| 10 | 93632 | . Spring | 1 | 36 | 95266 | . Boot - Spark plug | 1 |
| 11 | 92204 | . Piston Assembly - Oiler | 1 | 37 | 93173 | Spacer - Coil | 1 |
| 12 | 85769 | . Ring - Oil pump piston | 1 | 38 | 214353 | Insulator - Carburetor | 1 |
| 13 | 105603 | . "O" Ring - .114 x .070 | 1 | 39** | 94869 | Sealant - Adhesive | 1 |
| 14 | 83891 | . Spring - Return | 1 | 40 | 120097 | Screw - Hx W/H M5 x 25 | 4 |
| 15 | 83890 | . Sleeve - Oil pump | 1 | 41 | 214150 | Cylinder/Crankcase Assembly | 1 |
| 16 | 110653 | "O" Ring | 1 | 42 | 92777 | . Bolt - Bar mounting | 1 |
| 17 | 214746 | ① Kit - Muffler | 1 | 43 | 94660 | Piston Assembly | 1 |
| 18 | 110681 | ① . Screw - Skt hd 10-24 x 1/4 | 2 | 44 | 94136 | . Ring Set | 1 |
| 19 | 92961 | ① . Deflector - Exhaust | 1 | 45 | 92836 | . Pin - Piston | 1 |
| 20 | 213327 | ① . Screw - Special M6 | 2 | 46 | 111026 | . Ring - Snap | 2 |
| 21 | 213346 | ① . Body - Cover | 1 | 47 | 94135 | Connecting Rod Assembly | 1 |
| 17 | 92962 | ② Kit - Muffler | 1 | 48 | 94654 | . Screw - Connecting rod | 2 |
| 18 | 110681 | ② . Screw - Skt hd 10-24 x 1/4 | 2 | 49 | 110984 | . Bearing - Needle | 1 |
| 19 | 92961 | ② . Deflector - Exhaust | 1 | 50 | 68095 | . Roller - Needle (set of 20) | 1 |
| 20 | 93638 | ② . Screw - Special M5 | 2 | 51 | 92750 | Crankshaft | 1 |
| 21 | 93655 | ② . Body - Cover | 1 | 52 | 213282 | ⑤ Bearing - Crankshaft | 2 |
| 22* | 120043 | Nut - Hx Flg M8 x 1.25 | 1 | 53 | 83859 | Seal - Crankshaft oil | 2 |
| 23 | 94513 | Flywheel & Pawl Assembly | 1 | 52 | 93763 | ⑤ Sleeve Assembly - Bearing | 1 |
| 24 | 68796 | . Pin - Starter pawl | 2 | 53 | 83859 | . Seal - Crankshaft oil | 1 |
| 25 | 67814 | . Spring - Pawl | 2 | 54 | 93018 | Spark Plug (B, C, E) | 1 |
| 26 | 94493 | . Pawl - Starter | 2 | 54 | 214223 | Spark Plug (A, F, J, K, P, U) | 1 |

① Used on models with serial number prefix 12-.

② Used on models with serial number prefix 11-.

③ Used on PM 310 and PM 320 models.

④ Used on PM 330 and PM 340 models.

⑤ One of two types of crankshaft bearings used on models with serial number prefix 12-. Replacement crankshaft bearing must be the same as originally used on unit. Identify parts before ordering. All service replacement cylinders will be manufactured to use only crankshaft Bearing, P/N 213282.

* Flywheel nut torque should be 190 to 200 pound x inches (21.5 to 22.6 N.m.)

** A 2.8 oz. tube of adhesive sealant which must be applied in a 1/8" bead between the carburetor insulator and the cylinder/crankcase assembly. This tube contains enough sealant for many applications.

**Power Mac 310,
320, 330, 340**

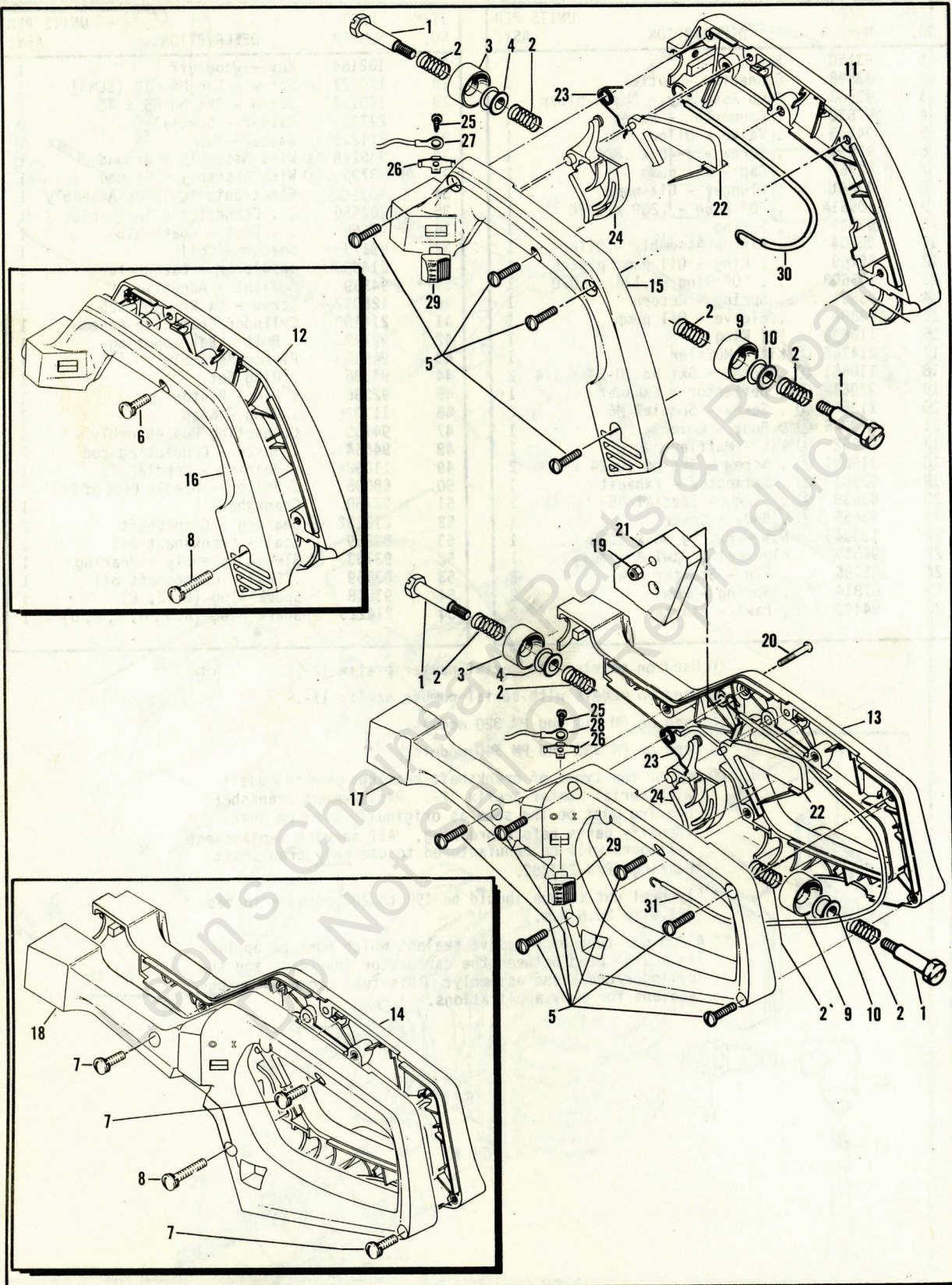


Figure 6. Handle Assemblies.

Power Mac 310, 320, 330, 340

Figure 6. Handle Assemblies.

| ITEM NO. | PART NUMBER | DESCRIPTION | UNITS PER ASY. | ITEM NO. | PART NUMBER | DESCRIPTION | UNITS PER ASY. |
|----------|-------------|---------------------------------|----------------|----------|-------------|--------------------------------|----------------|
| 1 | 93529 | Bolt - Shoulder | 2 | 16 | 93019C ② | . Handle - Left half | 1 |
| 2 | 93530A | Spring - Mount | 4 | 17 | 213226 ③ | . Handle - Long left | 1 |
| 3 | 92704 | Mount | 1 | 18 | 93794B ④ | . Handle - Long left | 1 |
| 4 | 94038 | Hub - Mount | 1 | 19 | 101326 ⑤⑥ | . Nut - Hx lock 10-24 | 1 |
| | 213230 ① | Handle Assembly | | 20 | 104400 ⑤⑥ | . Screw - Pan hd 10-24 x 1-1/4 | 1 |
| | 93511C ② | Handle Assembly | | 21 | 95042 ⑤⑥ | . Weight - Handle | 1 |
| | 213231 ③ | Handle Assembly | | 22 | 93310 | . Trigger - Safety | 1 |
| | 93792 ④ | Handle Assembly | | 23 | 93515 | . Spring - Trigger | 1 |
| | 213235 ⑤ | Handle Assembly | | 24 | 213232 ①③ | . Trigger - Throttle | 1 |
| | 95149 ⑥ | Handle Assembly | | 24 | 93309 ②④ | . Trigger - Throttle | 1 |
| 5 | 111032 ① | . Screw - Pan hd 10-16 x 5/8 | A/R* | 25 | 110706 | . Screw - Pan hd 8-18 x 1/2 | 1 |
| 6 | 120035 | . Screw - Pan hd M4 x 16 (SEMS) | 1 | 26 | 62451 | . Contact - Ignition switch | 1 |
| 7 | 120035 | . Screw - Pan hd M4 x 16 (SEMS) | 3 | 27 | 93505A | . Wire - Stop switch | |
| 8 | 120036 | . Screw - Pan hd M4 x 25 (SEMS) | 1 | | | (PM 310, 320) | 1 |
| 9 | 92704 | . Mount | 1 | 28 | 94039 | . wire - Stop switch | |
| 10 | 94038 | . Hub - Mount | 1 | | | (PM 330, 340) | 1 |
| 11 | 213229 ① | . Handle - Right half | 1 | 29 | 68846 | . Button - Stop switch | 1 |
| 12 | 93020C ② | . Handle - Right half | 1 | 30 | 213234 ① | . Wire Assembly - Throttle | 1 |
| 13 | 213224 ③ | . Handle - Long right | 1 | 30 | 95429 ② | . Wire Assembly - Throttle | 1 |
| 14 | 95113 ④ | . Handle - Long right | 1 | 31 | 213233 ③ | . Wire Assembly - Throttle | 1 |
| 15 | 213228 ① | . Handle - Left half | 1 | 31 | 95430 ④ | . Wire Assembly - Throttle | 1 |

① Used on PM 310 and PM 320 models with serial number prefix 12-.

② Used on PM 310 and PM 320 models with serial number prefix 11-.

③ Used on PM 330 and PM 340 models with serial number prefix 12-.

④ Used on PM 330 and PM 340 models with serial number prefix 11-.

⑤ Used on PM 330 and PM 340 models with serial number prefix 12- and suffix letter J.

⑥ Used on PM 330 and PM 340 models with serial number prefix 11- and suffix letter J.

* Four used on Handle Assembly, P/N 213230. Six used on Handle Assemblies, P/N 213231 and P/N 213235.

Leon's Copy Do Not



● MANUFACTURING ● SALES ● SERVICE ●

McCULLOCH
CORPORATION

900 Lake Havasu Ave.
Lake Havasu City, AZ 86403-2891

FOR SERVICE-RELATED PROBLEMS,
REPAIR OR MAINTENANCE
TAKE YOUR UNIT TO THE NEAREST
AUTHORIZED McCULLOCH SERVICING
DEALER LISTED UNDER SAWS IN YOUR
TELEPHONE DIRECTORY YELLOW PAGES.

If additional assistance is required, call this toll-free hot-line:
(800) 423-6302

Arizona residents call collect (602) 453-3681

Leon's Chainsaw & Repair
Do Not Sell My Products