

ILLUSTRATED PARTS LIST

PM 310		PM 320		PM 330	
MODELS	SERIAL NUMBER PREFIX	MODELS	SERIAL NUMBER PREFIX	MODELS	SERIAL NUMBER PREFIX
600042A	15-	600021C	15-	600043E	15-
600042C	15-	600021E	15-	600043J	15-
600042J	15-	600021J	15-	600043P	15-
		600021P	15-		
PM 340					
MODELS	SERIAL NUMBER PREFIX				
600044E	15-				
600044J	15-				

POWER MAC 310, 320, 330, 340 CHAIN SAW



McCulloch chain saws are identified by a model number (in this instance, 600042) followed by a suffix letter (A, B, C, etc.) stamped on the identification plate attached to the saw. Suffix letters denote variations in parts or assemblies in the manufacture of the saw.

Part numbers listed in this I.P.L. which have a suffix letter or letters following the description, indicate the part is used only on the model(s) identified by the letter or letters.

Part numbers and descriptions without suffix letter or letters apply to all versions of the chain saw model.

Part numbers which have one or more dots (.) preceding their descriptions may be ordered individually, but they are also included in the kit or assembly whose description begins directly above the dot(s).

Part numbers in this IPL which were not in the previous IPL covering these saws, are indicated by a dash (-) preceding the new part number.

The policy of McCulloch Corporation is one of continual improvement in design, manufacturing and engineering advancement wherever possible to assure still finer two-cycle power tools. Hence, specifications, equipment, colors, design and manufacturer's suggested list prices are subject to change without notice and McCulloch Corporation reserves the right to make such changes without prior notification or obligation to backfit or supply backfit components for units previously shipped from the factory.

April 1982

- CONTENTS -

	Page
Figure 1. General	2
Figure 2. CHAIN BRAKE Assembly	4
Figure 3. Carburetor Assembly	5
Figure 4. Powerhead Assembly	6
Figure 5. Handle Assemblies	8
Service Specifications	9
Bar & Chain Combinations	9
Tools and Accessories	9



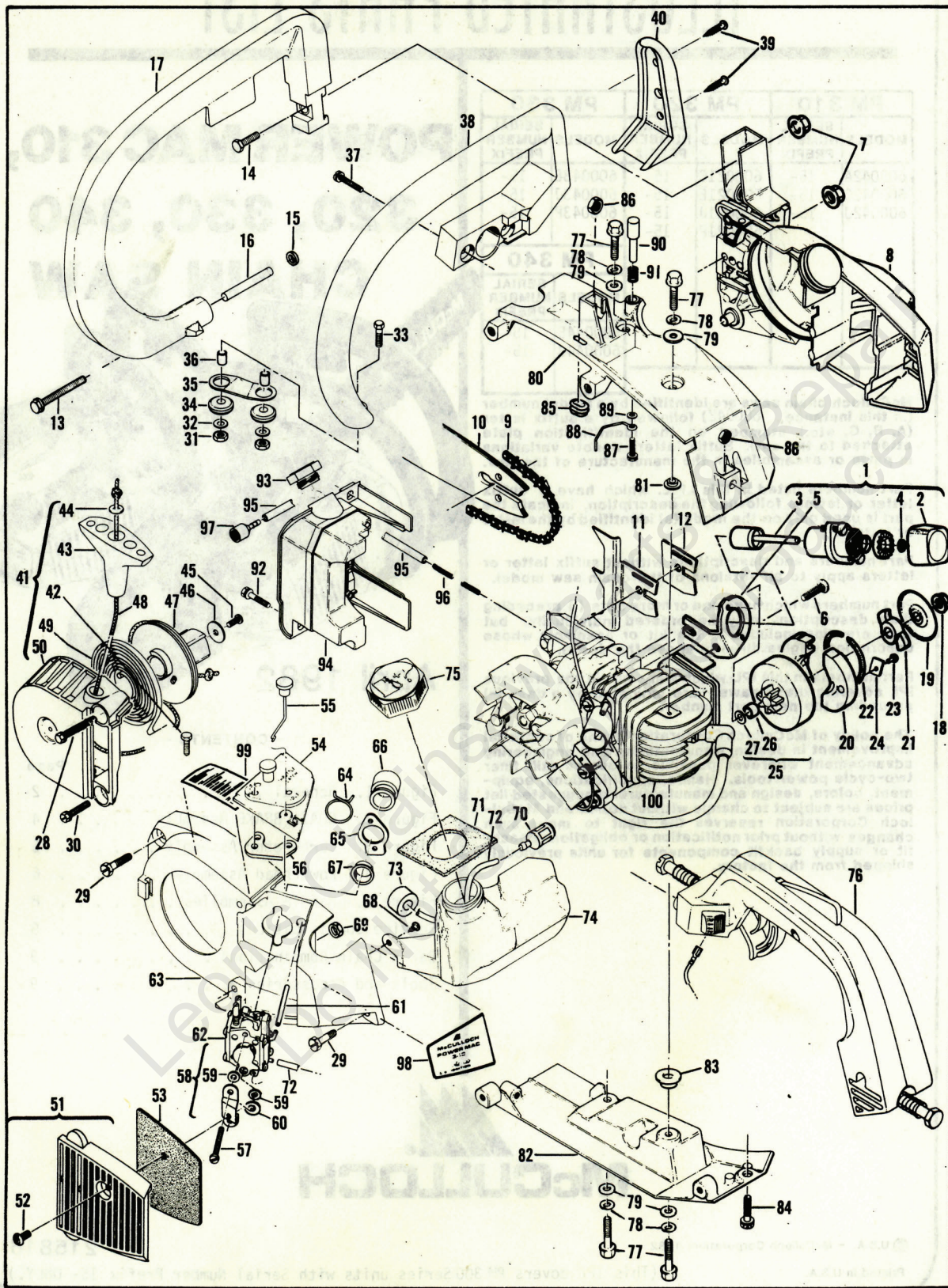


Figure 1. General

Figure 1. General.

ITEM	PART	NUMBER	DESCRIPTION	UNITS PER ASY.
1	215664	①	Grinder Assembly - AUTO-SHARP	1
2	215447	①	Knob	1
3	92587	①	Wheel Assembly - Grinding	1
4	213135	①	Ring - Retaining	1
5	215208	①	Bracket - AUTO-SHARP	1
6	120025	①	Screw - Pan hd M5 x 10	2
7	120029	①	Nut - Hx Fig M6 x 1.0	2
8	-	-	CHAIN BRAKE Assembly (Figure 2)	2
9	-	-	Chain (see page 9)	1
10	-	-	Bar (see page 9)	1
11	214207	②	Spike	1
12	93148	③	Spacer - Bar pad	1
13	213103	①	Screw - Hx M5 x 50 ST (SEMS)	1
14	120028	①	Screw - Hx M6 x 20	1
15	120045	①	Washer - M5	1
16	93153	①	Spacer - Wraparound	1
17	93021A	①	Lever - Wraparound	1
18	94144	①	Nut - Clutch	1
19	94243	①	Plate - Dust	1
20	213278	①	Clutch Assembly	1
21	94242	①	Rotor	1
22	93608	①	Spring Assembly - Clutch	1
23	110957	①	Rivet - F1/8 x .547	2
24	85064	①	Plate - Clutch shoe	2
25	21390	①	Drum/Sprocket/Bearing Assy	1
26	91222	①	Bearing	1
27	215259	①	Washer - Sprocket	1
28	120096	①	Screw - WH M5 x 55 ST	1
29	120095	①	Screw - WH M5 x 20 ST	2
30	120098	①	Screw - WH M5 x 18	1
31	120044	①	Nut - Hx M5 Lock	2
32	120045	①	Washer - M5	2
33	120041	①	Screw - Hx M5 x 22	1
34	110989	①	Grommet	2
35	93152	①	Link	1
36	93057	①	Spacer - Mount	2
37	120036	①	Screw - Pan M4 x 25 (SEMS)	2
38	92983A	①	Frame	1
39	95137	④	Frame Assembly	1
40	111011	④	Screw - PM 10-16 x 7/8	2
41	95141	④	Weight - Frame	1
42	120041	①	Screw - Hx M5 x 22	1
43	91255	①	Kit - Starter handle	1
44	105490	①	Washer - Starter handle	1
45	110041	①	Screw - Pan 8-32 x .5	1
46	68497	①	Washer	1
47	213261	①	Drum/Rope Assembly	1
48	83203	①	Rope - Starter	1
49	83078	①	Spring - Starter rewind	1
50	93790A	①	Housing Assembly - Starter	1
51	93527	①	Cover Assembly - Air filter	1
52	93626	①	Screw - Pan M5 x 10	1
53	94970	①	Filter - Air	1
54	94608	①	Cover Assembly - Air box	1
55	214316	①	Rod Assembly - Choke	1
56	94721	①	Seal - Air	1
57	120049	①	Screw - Pan hd M5 x 40	2
58	94905	①	Kit - Choke plate & bracket	1
59	-	-	Washer - Flat	2
60	-	-	Washer - Wavy	1
61	93151	①	Hose - Pulse	1
62	-	-	Carburetor (Figure 3)	1
63	93101A	①	Housing - Fan	1
64	94302	①	Clip - Spring	1
65	92747	①	Flange - Carburetor mounting	1
66	213211	①	Kit - Carburetor boot	1
67	95656	①	Eyelet	1
68	111002	①	Screw - Pan hd 10-16 x .5	1
69	94501	①	Nut - Hx M5 x 0.8 Thin	1
70	93720	①	Pickup - Fuel	1
71	94491	①	Seal - Fuel vent	1
72	93997	①	Hose - Fuel	1
73	90869	①	Filter - Vent	1
74	95301	①	Kit - Fuel tank	1
75	95300	①	Cap Assembly - Fuel	1
76	-	-	Handle Assemblies (Figure 5)	1
77	213166	①	Screw - Hx Wsh M6 x 16	4
78	102523	①	Washer - Lock	4
79	105043	①	Washer - 1/4 plate	4
80	214152	①	Kit - Top shroud	1
81	214350	①	Insulator	1
82	214154	①	Kit - Bottom shroud	1
83	214350	①	Insulator	1
84	120095	①	Screw - WH M5 x 20 ST	1
85	94192	③	Grommet	1
86	120034	①	Nut - Hx M6 x 1.0	2
87	110999	①	Screw - Hx hd 6-20 x 5/8 WH	1
88	94540	①	Rod - Oilier	1
89	100001	①	Washer - Plate	1
90	93304A	①	Knob - Oilier	1
91	93634A	①	Spring - Compression	1
92	120095	①	Screw - WH M5 x 20 ST	2
93	93274	①	Cap - Oil	1
94	93506A	①	Tank Assembly - Oil	1
95	94405	①	Hose - Oil pickup	1
96	93998	①	Spring - Oil hose	1
97	92465	①	Pickup - Oil	1
98	93856	①	Plate - Name (PM 310)	1
98	93854	①	Plate - Name (PM 320)	1
98	93858	①	Plate - Name (PM 330)	1
98	93859	①	Plate - Name (PM 340)	1
99	95206	①	Plate - Instruction	1
100	-	-	Powerhead Assembly (Figure 4)	1

① Used on PM 320 models.

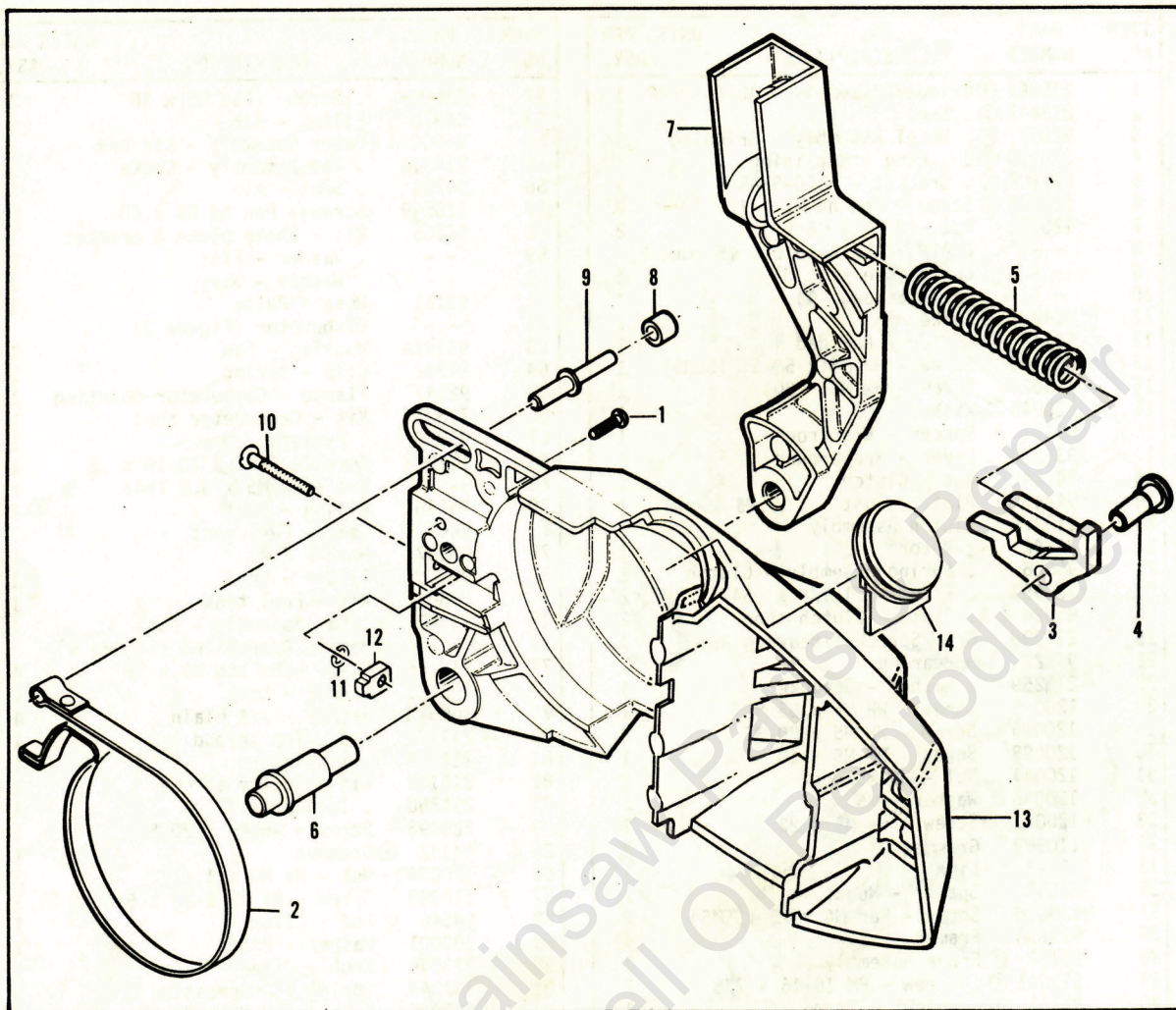
② Used on PM 320, 330, 340, and on PM 310 models with suffix letter A, C, E and J.

③ Used as optional equipment on PM 310 units not equipped with Spike, P/N 214207.

④ Used on PM 330 and PM 340 models with suffix letter J.

⑤ Used on PM 310 and PM 320 models.

Figure 2. CHAIN BRAKE Assembly.



ITEM NO.	PART NUMBER	DESCRIPTION	UNITS PER ASY.
	215474	CHAIN BRAKE Assembly	1
1	111047	. Screw - Pan hd 8-32 x 5/8	1
2	94709	. Band - Brake	1
3	94006	. Latch	1
4	93602	. Pivot - Latch	1
5	94007	. Spring - Compression	1
6	92482	. Pivot - Lever	1
7	93159	. Lever - Actuating	1

ITEM NO.	PART NUMBER	DESCRIPTION	UNITS PER ASY.
8	214368	. Bearing - Roller	1
9	213907	. Pin - Roller	1
10	90658	. Screw - Adjusting	1
11	110907	. Ring - Retaining	1
12	84929	. Nut - Bar adjusting	1
13	215778	. Housing - Brake	1
14*	93528A	Cover - AUTO SHARP	1

* Used on PM 310 and PM 330 models.

* The "M" denotes metric screw size.
 ② Contained in Repair Kit, P/N 94210.

① One of two carburetors used. Identify carburetor before ordering parts.

ITEM NO.	PART NUMBER	DESCRIPTION	UNITS PER ASY.
13	91812	② Lever - Inlet needle	1
14	91813	② Pin - Lever	1
15	91814	Screw - Lever pin (M3)*	1
16	91815	② Diaphragm Asy - Metering	1
17	91816	② Cover - Diaphragm	1
18	91817	② Cover - Diaphragm cover(M3)*4	1
19	94209	Screw - Idle adjust	1
20	94208	Screw - Main adjust	1
21	91819	② Spring - Needle	2
22	91820	② Screen - Filter	1
23	91821	② Gasket - Metering diaphragm	1
24	92097	Wash Plug	1
25	93950	Orifice - Main fuel	1

ITEM NO.	PART NUMBER	DESCRIPTION	UNITS PER ASY.
1	94496	① Carburetor Asy (Zama)	1
2	91802	② Shaft Asy - Throttle return	1
3	91803	② Plate - Throttle	1
4	91804	② Screw - Plate (M3)*	1
5	91805	② "E" Ring	1
6	91824	② Kit - Diaphragm & Gaskets	1
7	94206	② Cover Asy - Pump	1
8	91809	② Screw - Idle speed	1
9	91810	② Insert - Friction	1
10	91809	② Screw - Pump cover (M4)*	4
11	91810	② Needle - Inlet	1
12	91811	② Spring - Lever	1

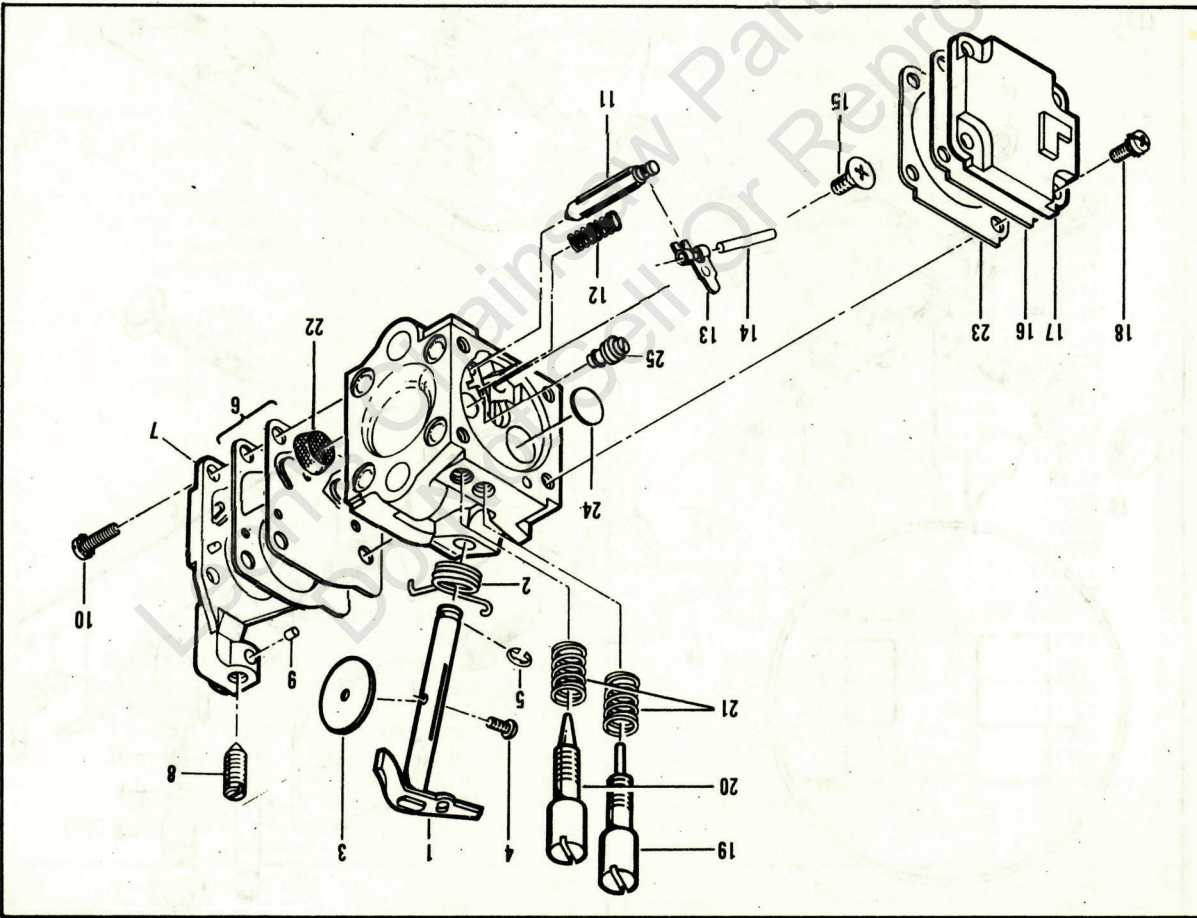


Figure 3. Carburetor Assembly.

PM 310, 320, 330, 340

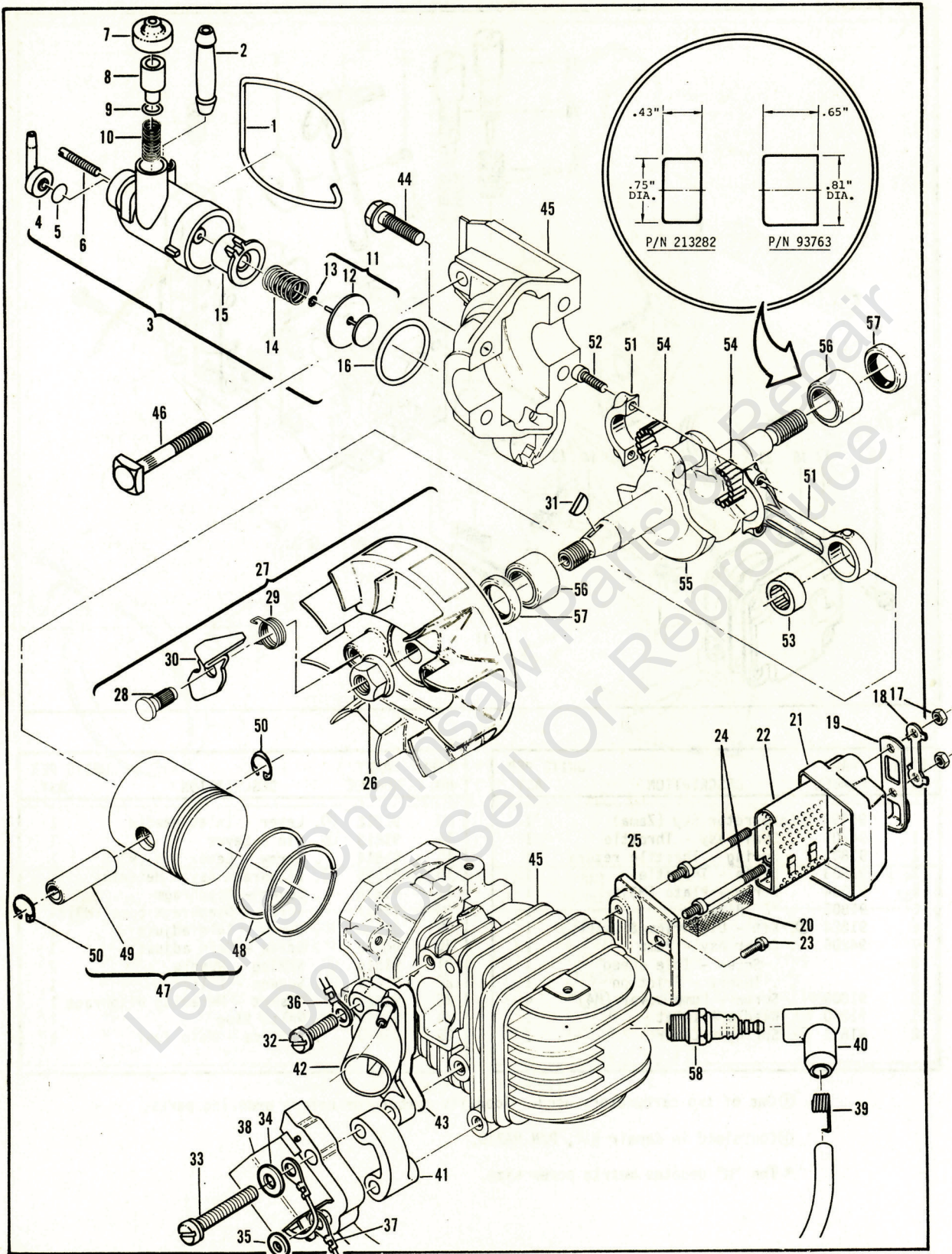


Figure 4. Powerhead Assembly

Figure 4. Powerhead Assembly.

ITEM	PART	NO.	DESCRIPTION	UNITS PER ASY.
1	93150	1	Ball	1
2	83898	1	Connector - Outlet	1
3	215194	1	Pump Assembly - Chain oiler	1
4	215196	1	Connector - Hose	1
5	94115	1	Valve - Oiler	1
6	93639	1	Screw - 6-40 x .800	1
7	215151	1	Cap - Oil pump	1
8	93301	1	Plinger - Oil pump	1
9	105614	1	"O" Ring - .239 x .070	1
10	93632	1	Spring	1
11	92204	1	Piston Assembly - Oiler	1
12	85769	1	Ring - Oil pump piston	1
13	105603	1	"O" Ring - .114 x .070	1
14	83891	1	Spring - Return	1
15	83890	1	Steeve - Oil pump	1
16	110653	1	"O" Ring	1
17	215871	2	Nut - Muffler	2
18	215471	1	Plate - Lock	1
19	215472	1	Deflector - Exhaust	1
20	215872	1	Screen - Spark arrester	1
21	215774	1	Cover	1
22	215776	1	Baffle	1
23	213369	1	Screw	1
24	215757	2	Bolt - Shoulder	2
25	215773	1	Base	1
26*	120043	1	Nut - Hx Fig M8 x 1.25	1
27	94513	1	Flywheel/Pawl Assembly	1
28	68796	2	Pin - Starter pawl	2
29	67814	2	Spring - Pawl	2
30	94493	2	Pawl - Starter	2
31	102164	1	Key - Woodruff	1
32	120027	1	Screw - Pan hd M5 x 18 (SEMS)	1
33	120112	2	Screw - Skt hd M5 x 40	2
34	24236	1	Washer - Special	1
35	214279	1	Washer - Tab	1
36	93514A	1	Wire Assembly - Ground	1
37	93795	1	Wire Assembly - Ground	1
38	95590	1	Electronic Ignition Assembly	1
39	102556	1	Connector - Spark plug	1
40	95266	1	Boot - Spark plug	1
41	214356	1	Spacer - Coil	1
42	215601	1	Manifold - Carburetor	1
43	92778	1	Gasket - Insulator	1
44	120097	4	Screw - Hx hd W/H M5 x 25	4
45	215943	1	Cylinder/Crankcase Assembly	1
46	92777	1	Bot - Bar mounting	1
47	94660	1	Piston Assembly	1
48	94136	1	Ring Set	1
49	92836	1	Pin - Piston	1
50	111026	2	Ring - Snap	2
51	94135	1	Connecting Rod Assembly	1
52	94654	2	Screw - Connecting rod	2
53	110984	1	Bearing - Needle	1
54	68095	1	Bearing - Needle (set of 20)	1
55	92750	1	Crankshaft	1
56	213282	2	Bearing - Crankshaft	2
57	83859	2	Seal - Crankshaft oil	2
58	93763	1	Steve Assembly - Bearing	1
59	83859	1	Seal - Crankshaft oil	1
60	93018	1	Spark Plug (E)	1
61	214223	1	Spark Plug (A,C,J,P)	1

① Used on PM 310 and PM 320 models.

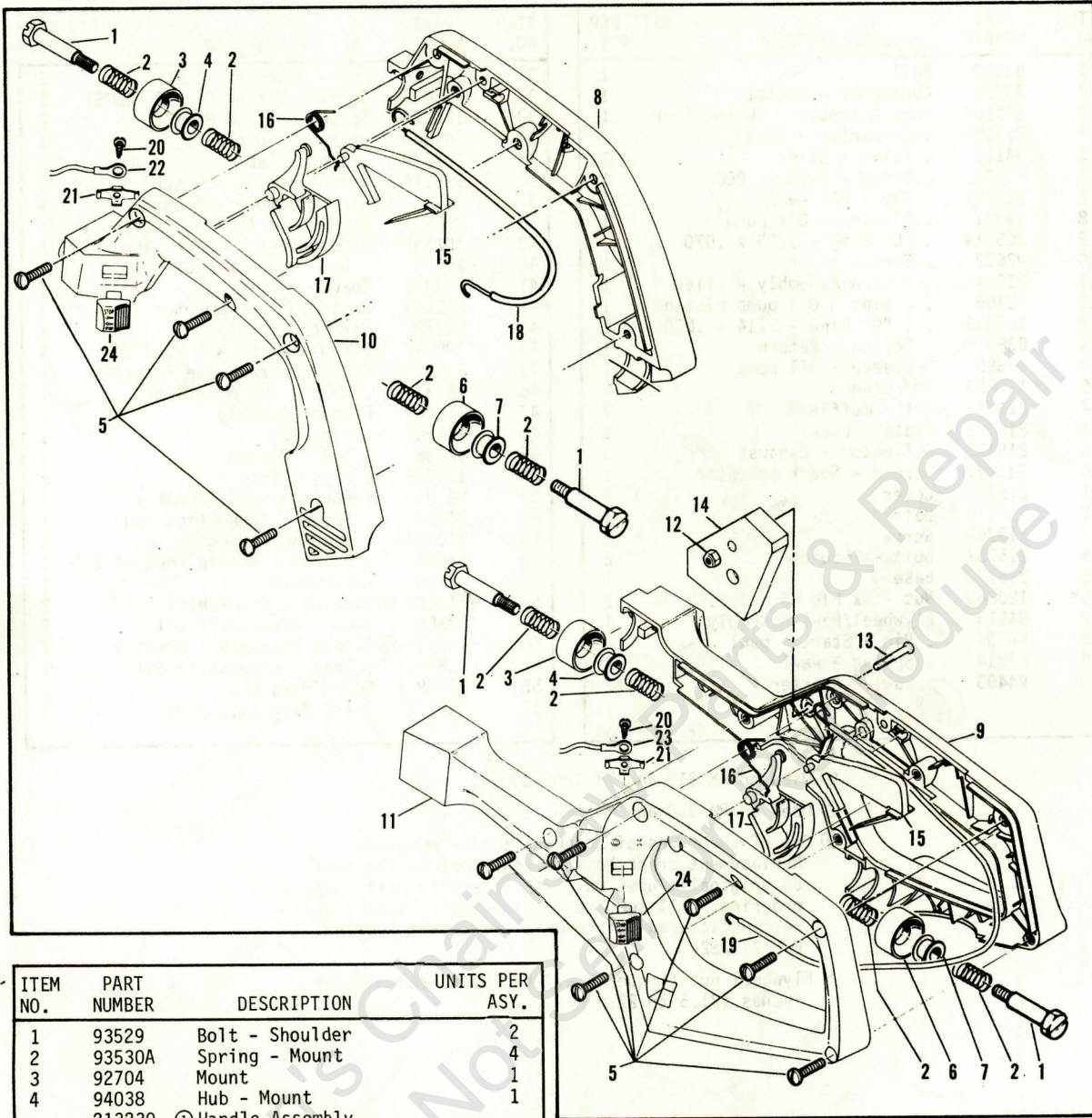
② Used on PM 330 and PM 340 models.

③ One of two types of crankshaft bearing used. Replacement crankshaft bearing must be the same as originally used on unit. Identify parts before ordering. All service replacement cylinders will be manufactured to use only crankshaft bearing, P/N 213282.

* Flywheel nut torque should be 190 to 200 pound x inches (21.5 to 22.6 N.m).

Produce & Repair

Figure 5. Handle Assemblies.



ITEM NO.	PART NUMBER	DESCRIPTION	UNITS PER ASY.
1	93529	Bolt - Shoulder	2
2	93530A	Spring - Mount	4
3	92704	Mount	1
4	94038	Hub - Mount	1
	213230	① Handle Assembly	
	213231	② Handle Assembly	
	213235	③ Handle Assembly	
5	111032	. Screw - Pan hd 10-16 x 5/8	A/R*
6	92704	. Mount	1
7	94038	. Hub - Mount	1
8	213229	① . Handle - Right half	1
9	213224	②③ . Handle - Long right	1
10	213228	① . Handle - Left half	1
11	213226	②③ . Handle - Long left	1
12	101326	③ . Nut - Hx lock 10-24	1
13	104400	③ . Screw - Pan hd 10-24 x 1-1/4	1
14	95042	③ . Weight - Handle	1
15	93310	. Trigger - Safety	1

ITEM NO.	PART NUMBER	DESCRIPTION	UNITS PER ASY.
16	93515	. Spring - Trigger	1
17	213232	. Trigger - Throttle	1
18	213234	① . Wire Assembly - Throttle	1
19	213233	② . Wire Assembly - Throttle	1
20	110706	. Screw - Pan hd 8-18 x 1/2	1
21	62451	. Contact - Ignition switch	1
22	93505A	. Wire - Stop switch (PM 310/320)	1
23	94039	. Wire - Stop switch (PM330/340)	1
24	68846	. Button - Stop switch	1

- ① Used on PM 310 and PM 320 models.
- ② Used on PM 330 and PM 340 models.
- ③ Used on PM330 and 340 models with suffix letter J.

* Four used on Handle Assembly, P/N 213230.
Six used on Handle Assemblies, P/N 213231 and P/N 213235.

Displacement	35 cc (2.1 cu. in.)
Bore and Stroke	38 mm x 30.5 mm
	(1.5 in. x 1.201 in.)
Bearings	Main: Needle
	3rd Port
Intake System	
Fuel Tank Capacity	330 cc (11.2 oz.)
Chain Oiler Capacity	100 cc (3.4 oz.)
Clutch Engaging Speed	3800 R.P.M.
Idle Speed	2700 to 2900 R.P.M.
Ignition	Electronic
Carburetor	Diaphragm Type, 2-needle
	Adjustable

Fuel Type	Regular Grade Leaded
	40:1 w/ McCulloch Oil
Filtering System, Fuel	Enclosed Felt Fuel Filter
Filtering System, Air	Felt Air Filter
Lamination Gap	0.3 to 0.4 mm
	(.011 in. to .015 in.)
Timing	26° B.T.D.C.
Piston Rings	2 Cast Iron Compression
Weight:	4.49 kg (9.9 lbs.)
	4.54 kg (10 lbs.)
	4.71 kg (10.4 lbs.)
	4.80 kg (10.5 lbs.)
	PM 340
	PM 330
	PM 320
	PM 310

Service Specifications

PART NUMBER	DESCRIPTION
214207	Spike
94972	Scrench
93797	Wrench - Screwdriver
214194	Lubri-gun
91226	Holder - Flywheel
93095	Bracket - AUTO-SHARP
95168	Grinder Assembly - AUTO-SHARP
94366	Kit - Carrying Case, 12" (PM 310, 320)
214201	Scabbard, 12"
94365	Kit - Carrying Case, 14" (PM 310, 320)
92977	Scabbard, 14"
94364	Kit - Carrying Case, 16" (PM 310, 320)
214202	Scabbard, 16"
85702	Lubricant - Custom, 6 oz. can
85703	Lubricant - Custom, 6 oz. cans, 1 - 6 pack

PART NUMBER	DESCRIPTION
214212	Kit - Tool
95169	Kit - Spark arrester screen
94416	Adapter - Intake (Cyl.)
94415	Adapter - Intake (Air Box)
68917	Adapter - Exhaust
85229	Kit - Fuel tank plug
90533	Tool - Pressure test
63094	Driver - Wrist pin
68911	Block - Piston holding
501334	Tester - Ignition
67537	Locrite
69794	Locquic
110083	R.T.V. Sealant
110706	Tool - Handle/throttle trigger screw

Tools and Accessories

PART NUMBER	DESCRIPTION	CHAIN SAW MODEL
214919N	Chain - MP 370GL	PM 310
214235	Bar - 14" Mini Pro	PM 320
214656N	Chain - AS 370G	PM 330
214230N	Chain - AS 370G	PM 340
214236	Bar - 16" Mini Pro	
214925N	Chain - MP 370GL	

Bar & Chain Combinations

PM 310, 320, 330, 340

 **McCULLOCH**
CORPORATION



● MANUFACTURING ● SALES ● SERVICE ●

McCULLOCH
CORPORATION

P.O. Box 92180, Los Angeles, CA 90009

Copyright - McCulloch.

To answer service-related questions and to solve common consumer problems quickly, we invite you to call this toll-free hot-line:

Arizona residents please call collect (602)453-3681

(800) 423-6302

Leon's Chainsaw Parts & Repair
Do Not Sell Or Reproduce