

# ILLUSTRATED PARTS LIST

## Power Mac 310, 320, 330, 340 Chain Saws

PM 310		PM 320		PM 330		PM 340	
MODELS	SERIAL NUMBER PREFIX	MODELS	SERIAL NUMBER PREFIX	MODELS	SERIAL NUMBER PREFIX	MODELS	SERIAL NUMBER PREFIX
600042A	11-	600021B	11-	600043B	11-	600044B	11-
600042B	11-	600021E	11-	600043J	11-	600044E	11-
600042E	11-	600021F	11-	600043U	11-	600044J	11-
600042J	11-	600021J	11-			600044U	11-
600042U	11-	600021P	11-				
		600021U	11-				

Power Mac 300 Series chain saws are identified by a model number (i.e.: 600021) followed by a suffix letter (A,B,C, etc.) stamped on the identification plate attached to the saw. Suffix letters denote variations in parts or assemblies in the manufacture of the saw.

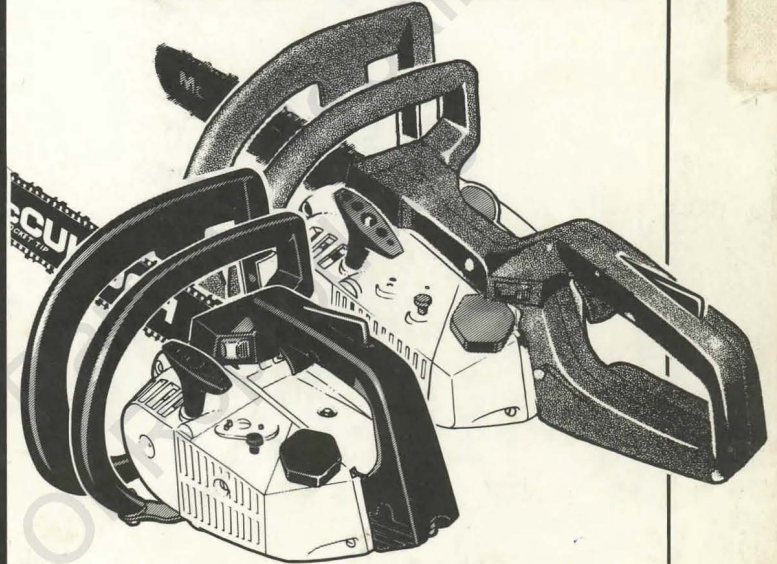
Part numbers listed in this IPL which have a suffix letter or letters following the description, indicate the part is used only on the model(s) identified by the letter or letters.

Part numbers and descriptions without suffix letter or letters apply to all models of the PM 300 Series chain saws.

Part numbers which have one or more dots (.) preceding their description may be ordered individually but they are also included in the kit or assembly whose description begins directly above the dot(s).

Part numbers which have changed since the previous printing of the IPL covering these saws, are indicated by a dash (-) preceding the new part number.

The policy of McCulloch Corporation is one of continual improvement in design, manufacturing and engineering advancement wherever possible to assure still finer two-cycle power tools. Hence, specifications, equipment, colors, design and manufacturer's suggested list prices are subject to change without notice, and McCulloch Corporation reserves the right to make such changes without prior notification or obligation to backfit or supply backfit components for units previously shipped from the factory.



December 1978

- CONTENTS -

	Page
Figure 1. General .....	2
Figure 2. CHAIN BRAKE Assembly .....	4
Figure 3. Carburetor Assembly .....	5
Figure 4. Carburetor Assembly .....	6
Figure 5. Carburetor Assembly .....	7
Figure 6. Powerhead Assembly .....	8
Figure 7. Handle Assemblies .....	10
Bar & Chain Combinations .....	3
Tools and Accessories .....	9
Service Specifications .....	9

  
**McCULLOCH**







FIGURE 1. GENERAL

ITEM NO.	PART NUMBER	DESCRIPTION	UNITS PER ASY.
1	-94951	① Grinder Asy - AUTO SHARP	1
2	92582	① . Knob	1
3	94024	① . Bail - AUTO SHARP	1
4	-95168	① . Wheel Asy - Grinding	1
5	110968	① . . Ring - Retaining	1
6	120029	Nut-Hx Flg. M6 .3 x 1.0	2
7	- -	CHAIN BRAKE Asy (Fig. 2)	
8	- -	Chain (Below)	1
9	- -	Bar (Below)	1
10	93157	Spike (PM 320, 330, 340)	1
11	93148	Spacer - Bar Pad (PM 310)	1
12	120094	Screw-Hx M5 x 50 ST (SEMS)	1
13	120028	Screw-Hx M6 .30 x 20	1
14	120045	Washer - M5	1
15	93153	Spacer - Wraparound	1
16	93021A	Lever - Wraparound	1
17	94244	Nut - Clutch	1
18	94243	Plate - Dust	1
19	-94250	Clutch Asy	1
20	-94242	. Rotor	1
21	93608	. Spring Asy - Clutch	1
22	110957	. Rivet - F1 1/8 x .547	2
23	85064	. Plate - Clutch shoe	2
24	-94996	Drum/Spkt/Brg. Asy	1
25	91222	. Bearing	1
26	120025	① Screw - Pan M5 x 10	2
27	93095	① Bracket - AUTO SHARP	1
28	120096	Screw - WH M5 x 55 ST	1
29	120095	Screw - WH M5 x 20 ST	2
30	120098	Screw - WH M5 x 18	1
31	120044	Nut - Hx M5 Lock	2
32	120045	Washer - M5	2
33	120041	Screw - Hx M5 x 22	1
34	110989	Grommet	2
35	93152	Link	1
36	93057	Spacer - Mount	2
37	120036	Screw-Pan M4 x 25 (SEMS)	2
38	92983A	Frame	1
38	-95137	② Frame Asy	1
39	-111011	② . Screw - PM 10 - 16 x 7/8	2
40	-95141	② . Weight - Frame	1
41	94325	Kit - Starter	1
42	120041	. Screw - Hx M5 x 22	1
43	91255	. Kit - Starter handle	1
44	105490	. Washer - Starter handle	1
45	110041	. Screw - Pan 8-32 x .5	1
46	68497	. Washer	1
47	94492	. Drum/Rope Asy	1
48	83203	. . Rope - Starter	1
49	83078	. Spring - Starter rewind	1
50	93790A	. Housing Asy - Starter	1

ITEM NO.	PART NUMBER	DESCRIPTION	UNITS PER ASY.
51	93527	Cover Asy - Air filter	1
52	93626	. Screw - Pan M5 x 10	1
53	-94970	Filter - Air	1
54	94608	Cover Asy - Air box	1
55	93526A	. Rod Asy - Choke	1
56	-94721	. Seal - Air	1
57	120049	Screw - Pan M5 x 40	2
58	94905	Kit - Choke plate & bracket	1
59	- -	. Washer - Flat	2
60	- -	. Washer - Wavy	1
61	93151	Hose - Pulse	1
62	- -	Carburetor (Fig. 3,4,5)	
63	93101A	Housing - Fan	1
64	94302	Clip - Spring	1
65	92747	Flange - Carb mounting	1
66	92746	Boot - Carburetor	1
67	-95151	Cap - Fuel	1
68	111002	Screw - Pan 10-16 x .5	1
69	94501	Nut - Hx M5 x 0.8 Thin	1
70	93720	Pickup - Fuel	1
71	94491	Seal - Fuel vent	1
72	93997	Hose - Fuel	1
73	94724	Tank - Fuel	1
74	- -	Handle Asys (Fig. 7)	
75	120021	Screw - WH M5 x 13	1
76	94032	Screw - Hx M5 x 16 PH WSH	1
77	93978	Insulator - Top shroud	1
78	93154	Shroud - Top	1
79	94192	③ Grommet	1
80	120034	Nut - Hx M6.3 x 1.0	2
81	110999	Screw - Hx 6-20 x 5/8 WH	1
82	94540	Rod - Oiler	1
83	100001	Washer - Plain	1
84	93304A	Knob - Oiler	1
85	93634A	Spring - Compression	1
86	120021	Screw - WH M5 x 13	2
87	120095	Screw - WH M5 x 20 ST	1
88	93155	Shroud - Bottom	1
89	120095	Screw - WH M5 x 20 ST	2
90	93274	Cap - Oil	1
91	93506A	Tank Asy - Oil	1
92	94405	. Hose - Oil pickup	1
93	93998	. Spring - Oil hose	1
94	92465	. Pickup - Oil	1
95	93856	Plate - Name (PM 310)	1
95	93854	Plate - Name (PM 320)	1
95	93858	Plate - Name (PM 330)	1
95	93859	Plate - Name (PM 340)	1
96	93861	Plate - Instruction	1
97	- -	Powerhead Asy (Fig. 6)	

① Used on PM 320 and PM 340 models.

② Used on PM 330 and PM 340 models with suffix letter J.

③ Used on PM 310 and PM 320 models.

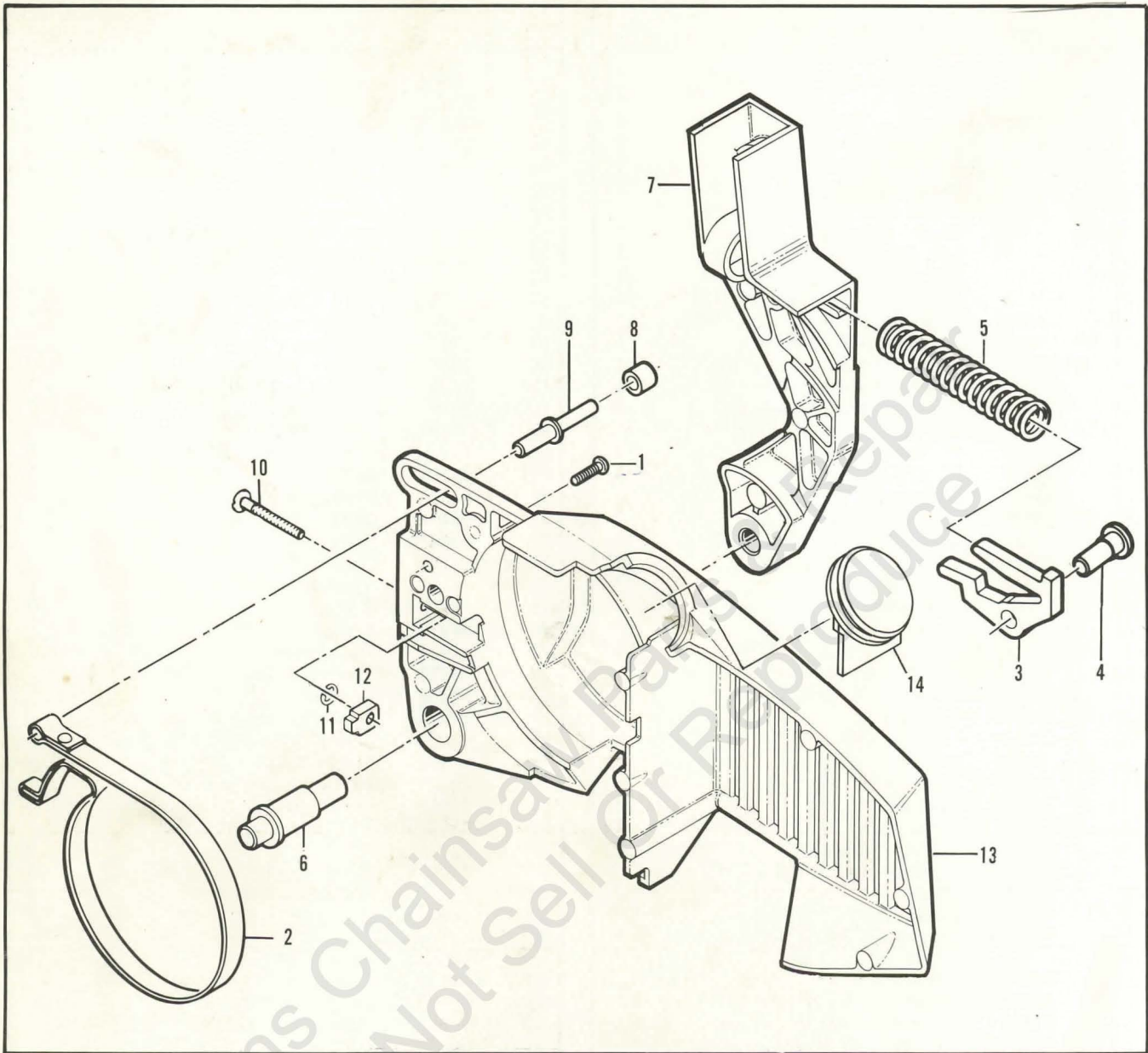
**Bar & Chain Combinations**

PM 310		PM 320	
90549A	Bar - 12" Mini Pro (A)	90550A	Bar - 14" Mini Pro (B,J,P)
90642N	Chain - MP 370G (A)	92600N	Chain - AS 370G (B,J,P)
90550A	Bar - 14" Mini Pro (B,J,U)	90752A	Bar - 16" Mini Pro (F,U)
90643N	Chain - MP 370G (B,J,U)	93688N	Chain - AS 370G (F,U)
PM 330		PM 340	
90550A	Bar - 14" Mini Pro (B, J)	90550A	Bar - 14" Mini Pro (B,J)
90643N	Chain - MP 370G (B, J)	92600N	Chain - AS 370G (B,J)
90752A	Bar - 16" Mini Pro (U)	90752A	Bar - 16" Mini Pro (U)
90911N	Chain - MP 370G (U)	93688N	Chain - AS 370G (U)



# Power Mac 310, 320, 330, 340

## FIGURE 2. CHAIN BRAKE ASSEMBLY

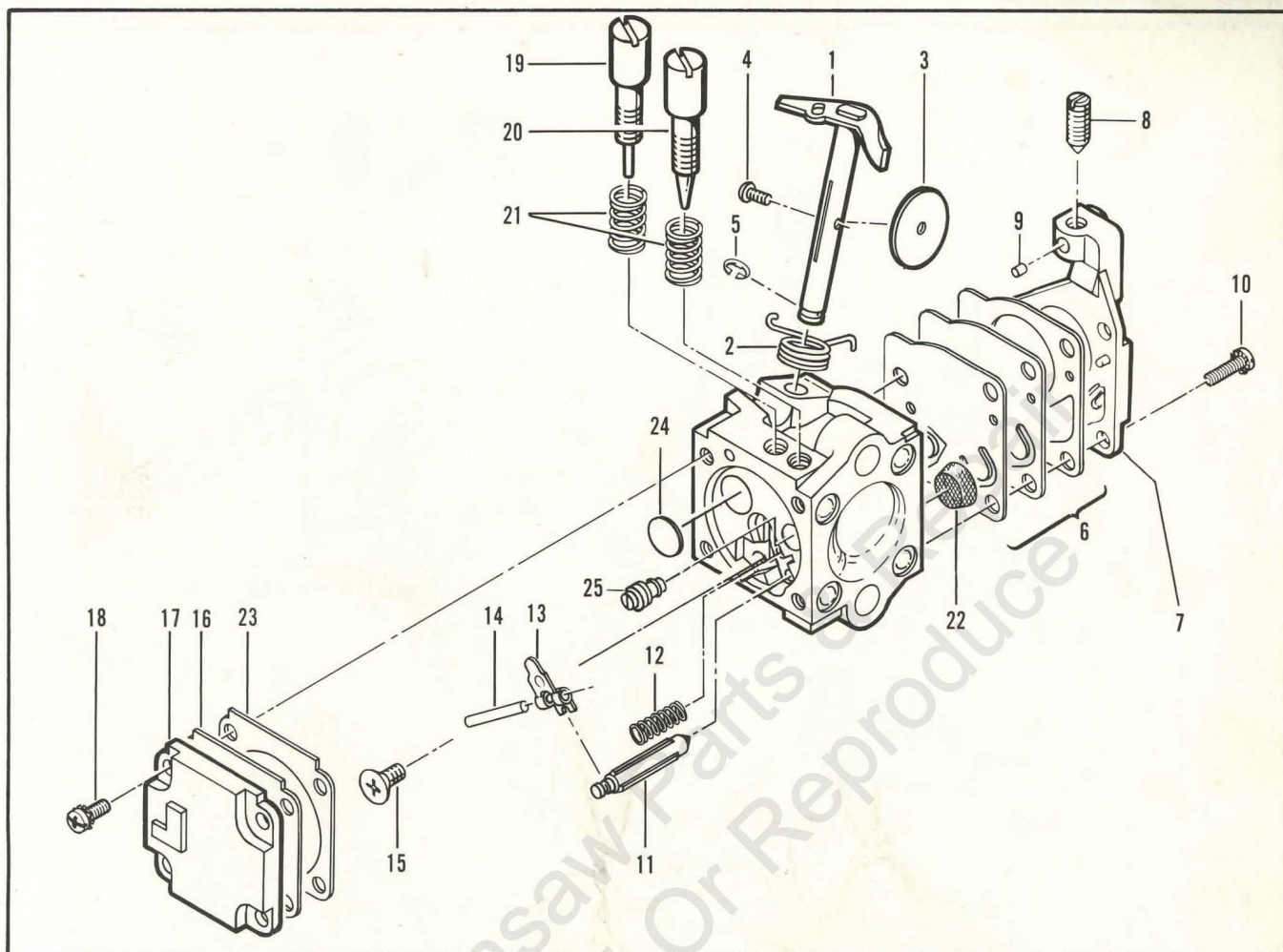


Item No.	Part Number	Description	Units Per Asy.
-94201		CHAIN BRAKE Assembly	1
1	-110656	① . Screw-Pan 8-32 x 5/8	1
2	-94709	② . Band - Brake	1
2	92487	③ . Band - Brake	1
3	-94006	② . Latch	1
3	93092	③ . Latch	1
4	93602	. Pivot - Latch	1
5	-94007	② . Spring - Compression	1
5	93140	③ . Spring - Compression	1

Item No.	Part Number	Description	Units Per Asy.
6	92482	. Pivot - Lever	1
7	93159	. Lever - Actuating	1
8	93147	. Bearing - Roller	1
9	93139A	. Pin - Roller	1
10	90658	. Screw - Adjusting	1
11	110907	. Ring - Retaining	1
12	84929	. Nut - Bar Adjusting	1
13	-94173	② . Housing - Brake	1
13	93158	③ . Housing - Brake	1
14	93528A	④ Cover - AUTO SHARP	1

- ① Not used on some early models.
- ② Used on models with Screw, P/N 110656.
- ③ Used on models without Screw, P/N 110656.
- ④ Used on PM 310 and PM 330 models.

FIGURE 3. CARBURETOR ASSEMBLY



ITEM NO.	PART NUMBER	DESCRIPTION	UNITS PER ASY.
	93524A	① Carburetor Asy (Zama)	1
1	94205	. Shaft Asy - Throttle	1
2	91802	. Spring - Throttle return	1
3	91803	. Plate - Throttle	1
4	91804	. Screw - Plate (M3)*	1
5	91805	. "E" Ring	1
6	91824	② Kit - Diaphragm & Gaskets	1
7	94206	. Cover Asy - Pump	1
8	94207	. Screw - Idle speed	1
9	91808	. Insert - Friction	1
10	91809	. Screw - Pump cover (M4)*	4
11	91810	② Needle - Inlet	1
12	91811	② Spring - Lever	1

ITEM NO.	PART NUMBER	DESCRIPTION	UNITS PER ASY.
13	91812	② Lever - Inlet needle	1
14	91813	② Pin - Lever	1
15	91814	. Screw - Lever pin (M3)*	1
16	91815	② Diaphragm Asy - Metering	1
17	91816	. Cover - Diaphragm	1
18	91817	. Screw - Diaphragm cover (M3)*4	4
19	94209	. Screw - Idle adjust	1
20	94208	. Screw - Main adjust	1
21	91819	② Spring - Needle	2
22	91820	② Screen - Filter	1
23	91821	② Gasket - Metering diaphragm	1
24	92097	. Welsh Plug	1
25	93950	. Orifice - Main fuel	1

① One of three carburetors used. Identify carburetor before ordering parts.

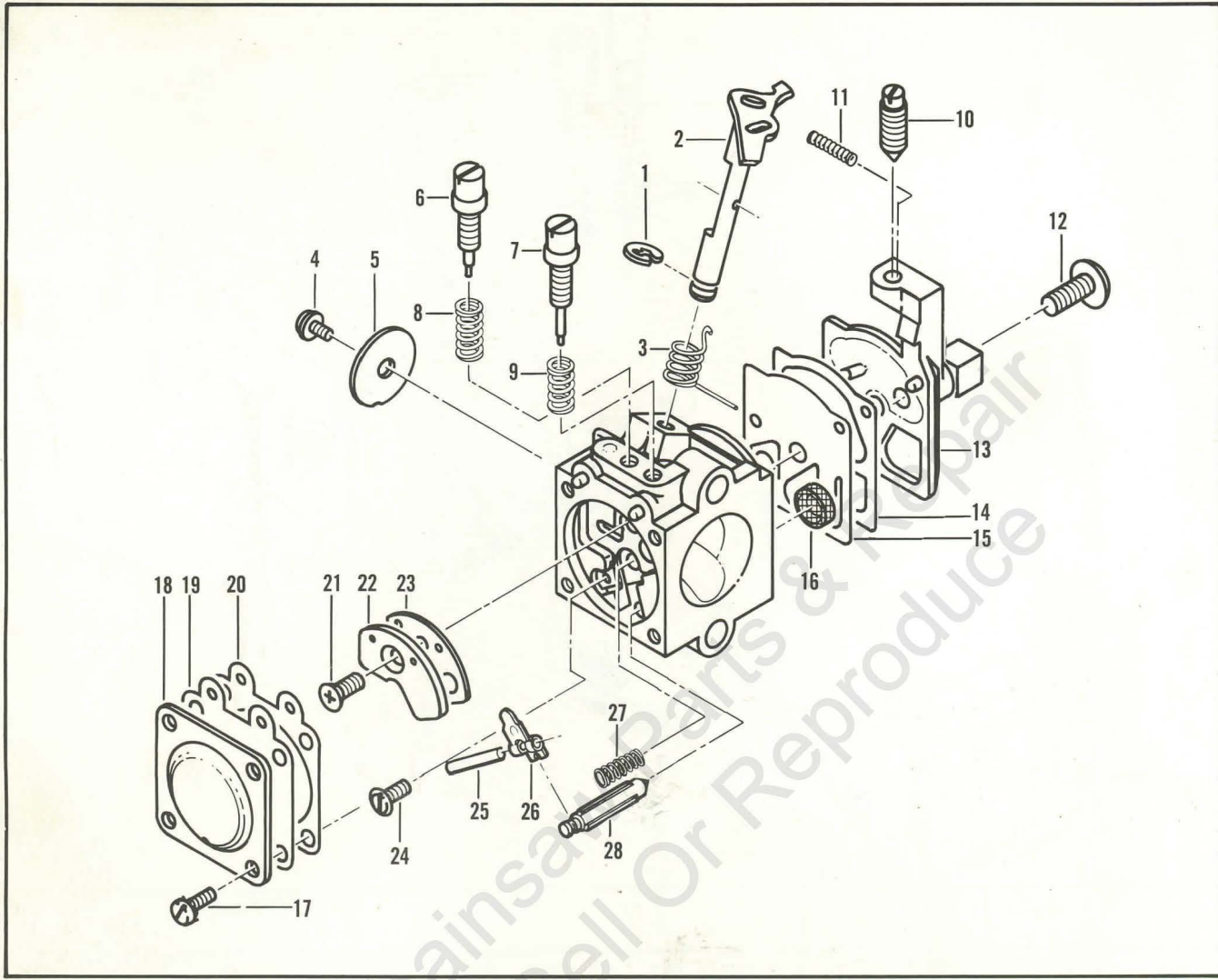
② Contained in Repair Kit, P/N 94210.

\* The "M" denotes metric screw size.



# Power Mac 310, 320, 330, 340

FIGURE 4. CARBURETOR ASSEMBLY



ITEM NO.	PART NUMBER	DESCRIPTION	UNITS PER ASY.
	94411	① Carburetor Asy-Walbro (WA-52)	1
1	94749	. Ring-Shaft retainer	1
2	94752	. Shaft Asy - Throttle	1
3	*94765	. Spring-Throttle return	1
4	*68565	. Screw - Valve	1
5	94753	. Valve - Throttle	1
6	*94766	. Needle - Idle adjust	1
7	*94767	. Needle - Hi speed	1
8	*94763	. Spring - Idle needle	1
9	*67502	. Spring-Hi speed needle	1
10	94762	. Screw - Idle adjust	1
11	*67504	. Spring - Friction	1
12	*94760	. Screw - Pump cover	1
13	94751	. Cover - Pump	1

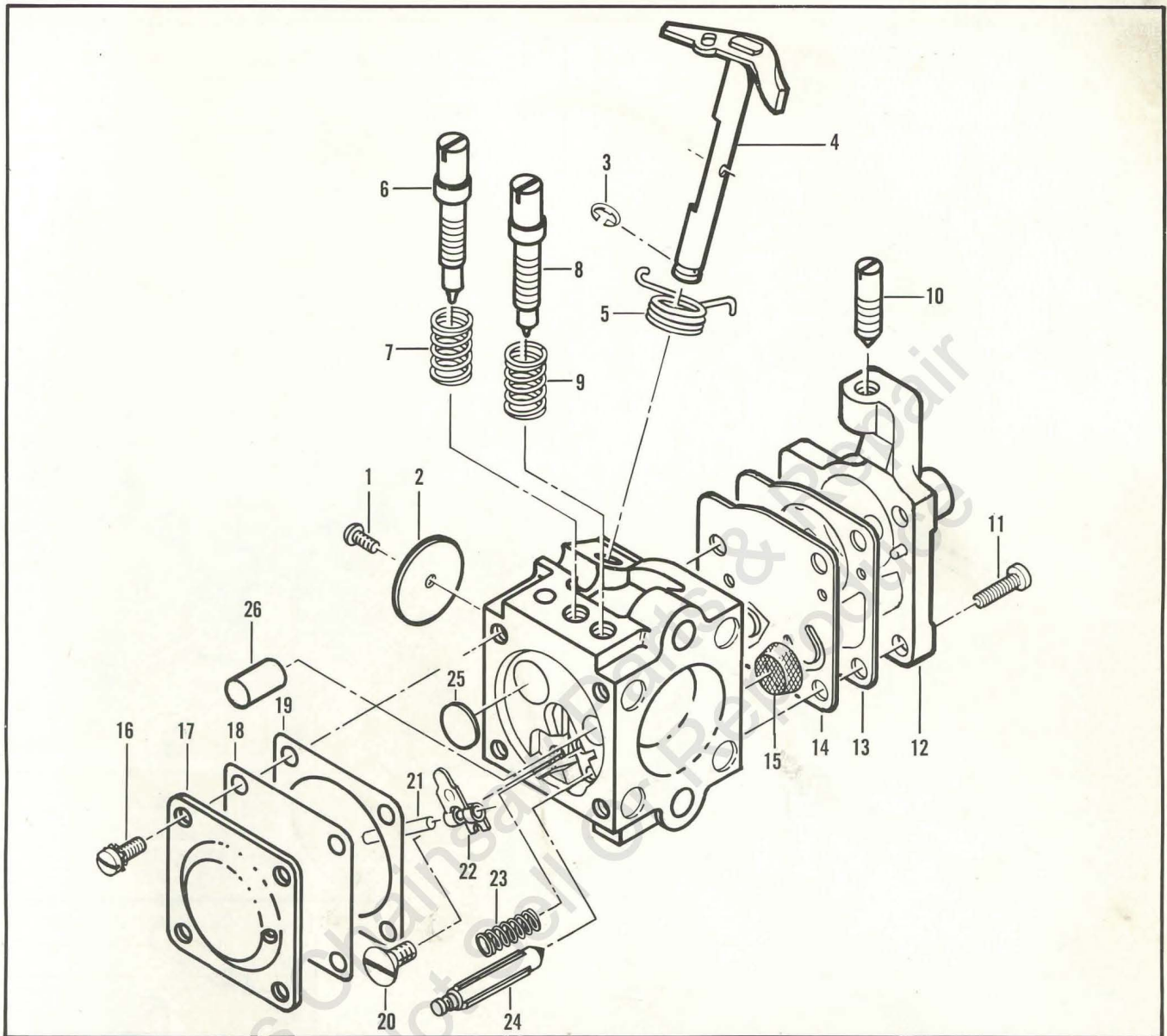
ITEM NO.	PART NUMBER	DESCRIPTION	UNITS PER ASY.
14	**94754	. Gasket - Pump	1
15	**94758	. Diaphragm - Pump	1
16	*94769	. Screen - Inlet	1
17	*80529	. Screw-Diaphragm cover	4
18	94750	. Cover-Metering diaphragm	1
19	**94759	. Diaphragm Asy-Metering	1
20	**94755	. Gasket - Metering diaphragm	1
21	*94761	. Screw-Circuit plate	1
22	*94771	. Plate - circuit	1
23	**94756	. Gasket - circuit	1
24	*67500	. Screw-Metering lever	1
25	*94770	. Pin-Metering lever	1
26	*94772	. Lever - Metering	1
27	*94764	. Spring-Metering lever	1
28	*67491	. Valve - Inlet needle	1
	*94775	Kit-Gasket/Diaphragm	

① One of three carburetors used. Identify carburetor before ordering parts.

\* Contained in Repair Kit, P/N 94774.

\*\* Contained in Gasket/Diaphragm Kit, P/N 94775.

FIGURE 5. CARBURETOR ASSEMBLY



ITEM NO.	PART NUMBER	DESCRIPTION	UNITS PER ASY.
	94495	① Carburetor-Tillotson HU-44A	1
1	*94811	. Screw-Throttle shutter	1
2	94841	. Shutter - Throttle	1
3	94839	. Ring - Retaining	1
4	94838	. Lever Asy-Throttle shaft	1
5	*94840	. Spring-Throttle return	1
6	*94831	. Screw-Idle mixture	1
7	*52936	. Spring - Idle screw	1
8	94836	. Screw-Hi speed mixture	1
9	*52936	. Spring-Hi speed screw	1
10	94832	. Screw-Idle speed	1
11	94830	. Screw-Fuel pump	4
12	94829	. Body Asy-Fuel pump	1
13	**	. Gasket-Fuel pump	1

ITEM NO.	PART NUMBER	DESCRIPTION	UNITS PER ASY.
14	*94828	. Diaphragm-Fuel pump	1
15	*66623	. Screen - Inlet	1
16	51721	. Screw-Diaphragm cover	4
17	94825	. Cover - Diaphragm	1
18	*94824	. Diaphragm	1
19	**	. Gasket - Diaphragm	1
20	*66644	. Screw - Inlet pin	1
21	*94834	. Pin - Inlet fulcrum	1
22	*94833	. Lever - Inlet control	1
23	*94835	. Spring - Inlet tension	1
24	66637	. Needle - Inlet	1
25	*94822	. Plug - Welch	1
26	94837	. Check valve - Nozzle	1
	*94842	Kit-Gasket	

① One of three carburetors used. Identify carburetor before ordering parts.

\* Contained in Repair Kit, P/N 94843.

\*\* Contained in Gasket Kit, P/N 94842.



# Power Mac 310, 320, 330, 340

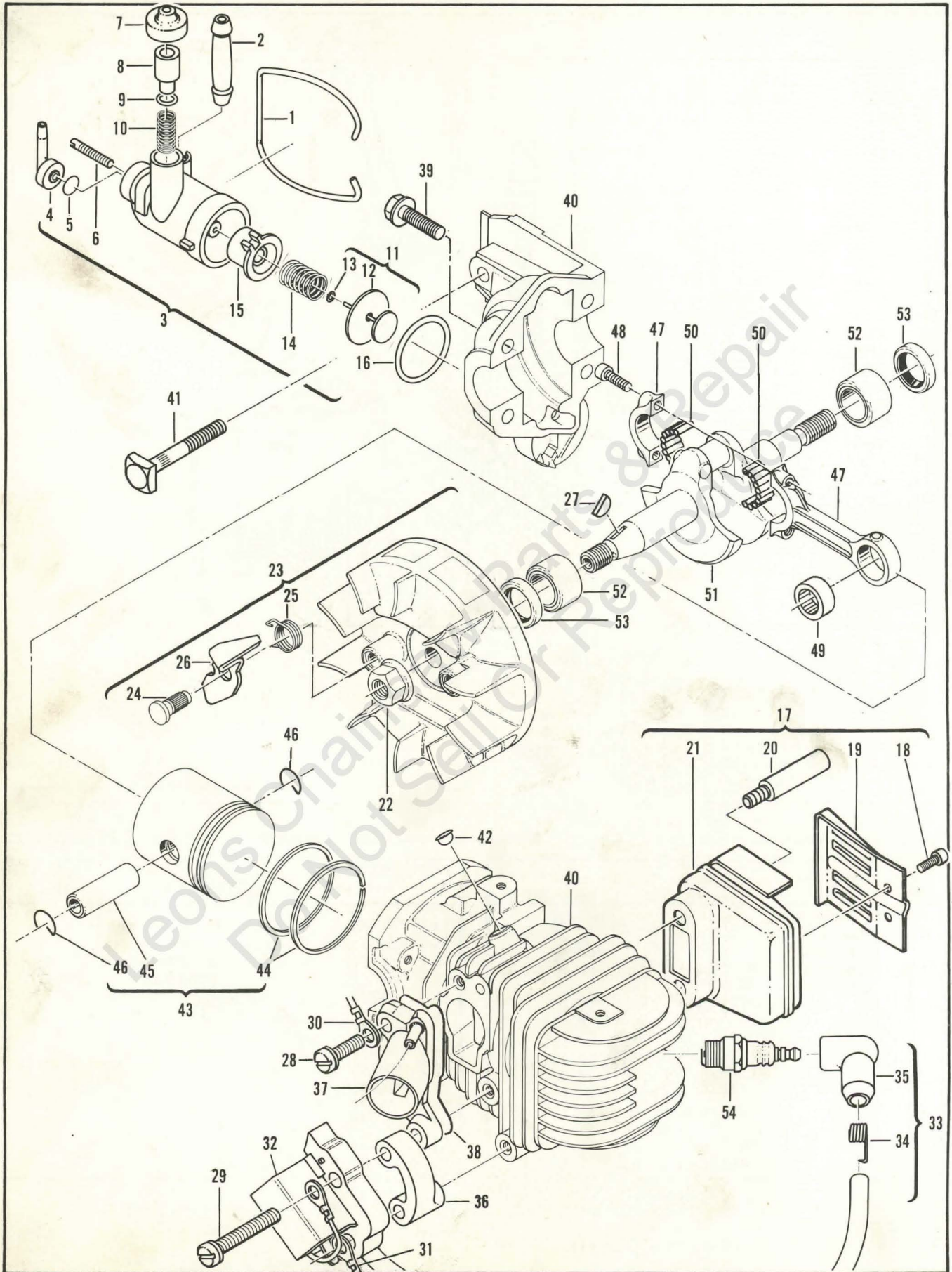


Figure 6. Powerhead Assembly



## FIGURE 6. POWERHEAD ASSEMBLY

ITEM NO.	PART NUMBER	DESCRIPTION	UNITS PER ASY.
1	93150	Bail	1
2	83898	Connector - Outlet	1
3	-93503	Pump Asy - Chain oiler	1
4	93630	. Connector - Hose	1
5	94115	. Valve - Oiler	1
6	93639	. Screw - 6-40 x .800	1
7	62262	. Cap - Oil pump	1
8	93301	. Plunger - Oil pump	1
9	105614	. "O" Ring - .239 x .070	1
10	93632	. Spring	1
11	92204	. Piston Asy - Oiler	1
12	85769	. . Ring - Oil pump piston	1
13	105603	. . "O" Ring - .114 x .070	1
14	83891	. Spring - Return	1
15	83890	. Sleeve - Oil pump	1
16	110653	"O" Ring	1
17	92962	Kit - Muffler	1
18	110681	. Screw - Skt 10-24 x 1/4	2
19	92961	. Deflector - Exhaust	1
20	93638	. Screw - Special M5	2
21	93655	. Body - Cover	1
22*	120043	Nut - Hx Flg. M8 x 1.25	1
23	-94513	Flywheel and Pawl Asy	1
24	68796	. Pin - Starter pawl	2
25	67814	. Spring - Pawl	2
26	-94493	. Pawl - Starter	2
27	102164	Key - Woodruff	1
28	120027	Screw - Pan M5 x 18 (SEMS)	1

ITEM NO.	PART NUMBER	DESCRIPTION	UNITS PER ASY.
29	120026	Screw - Pan M5 x 40 (SEMS)	2
30	93514A ①	Wire Asy - Ground	1
31	93795 ②	Wire Asy - Ground	1
32	93131A	Electronic Ignition Asy	1
33	93128	. Wire Asy - Spark plug	1
34	102556	. . Connector - Spark plug	1
35	-94303	. . Boot - Spark plug	1
36	93173	Spacer - Coil	1
37	92748B	Insulator - Carburetor	1
38	**94869	Sealant - Adhesive	1
39	-120097	Screw - Hx W/H M5 x 25	4
40	93045	Cyl/Crankcase Asy	1
41	92777	. Bolt - Bar mounting	1
42	110914	. Plug - Cup	4
43	94134	Piston Asy	1
44	94136	. Ring Set	1
45	92836	. Pin - Piston	1
46	92023	. Ring - Retaining	2
47	94135	Connecting Rod Asy	1
48	66853	. Screw - Connecting Rod	2
49	110984	. Bearing - Needle	1
50	68095	. Roller - Needle (set of 20)	1
51	92750	Crankshaft	1
52	66854	Bearing - Crankshaft	2
53	83859	Seal - Crankshaft Oil	2
54	93018	Spark plug (B,E)	1
(54)	63097	Spark Plug (A,F,J,P,U)	1

① Used on PM 310 and PM 320 models.

② Used on PM 330 and PM 340 models.

\*Flywheel nut torque should be 190 to 200 pound x inches (21.5 to 22.6 N.m.).

\*\*A 2.8 oz. tube of adhesive sealant which must be applied in a 1/8" bead between the carburetor insulator and the cylinder/crankcase assembly. This tube contains enough sealant for many applications.

### TOOLS & ACCESSORIES

93157	Spike	85703	Lubricant - Custom, 6 oz. cans, 1-6 pak
94972	Scrench	94355	Kit - Woodcutter
93797	Wrench - Screwdriver	94356	Kit - Tool
68090	Lubri-Gun	95169	Kit - Spark arrester screen
59549	Holder - Flywheel	94416	Adapter - Intake (cylinder)
93095	Bracket - AUTO SHARP	94415	Adapter - Intake (air box)
95168	Grinder Asy - AUTO SHARP	68917	Adapter - Exhaust
94366	Kit - Carrying case, 12" (PM 310, 320)	85229	Kit - Fuel tank plug
92976	. Scabbard, 12"	90533	Tool - Pressure test
94365	Kit - Carrying case, 14" (PM 310, 320)	63094	Driver - Wrist pin
92977	. Scabbard, 14"	68911	Block - Piston holding
94364	Kit - Carrying case, 16" (PM 310, 320)	501334	Tester - Ignition
94363	. Scabbard, 16"	67537	Loctite
85702	Lubricant - Custom, 6 oz. can	69794	Locquic
		110083	R.T.V. Sealant
		110232	Tool - Handle/Throt- tle trigger screw

### SERVICE SPECIFICATIONS

Displacement . . . . .	35 cc (2.1 cu. in.)
Bore and Stroke . . . . .	38 mm x 30.5 mm (1.5 in. x 1.201 in.)
Bearings . . . . .	Main: Needle
Intake System . . . . .	Third Port
Fuel Tank Capacity . . . . .	330 cc (11.2 oz.)
Chain Oiler Capacity . . . . .	100 cc (3.4 oz.)
Clutch Engaging Speed. . . . .	3800 R.P.M.
Idle Speed . . . . .	2700 to 2900 R.P.M.
Ignition . . . . .	Electronic
Carburetor . . . . .	Diaphragm type, 2 needle adjustable
Fuel Type . . . . .	Regular Grade Leaded
Fuel - Oil Mixture . . . . .	40:1 w/ McCulloch Oil
Filtering System, Fuel . . . . .	Enclosed Felt Fuel Filter
Filtering System, Air. . . . .	Felt Air Filter
Lamination Gap . . . . .	0.3 to 0.4 mm (.011 in. to .015 in.)
Timing . . . . .	26° B.T.D.C.
Piston Rings . . . . .	2 Cast Iron Compression Rings
Weight: PM 310 . . . . .	4.49 kg (9.9 lbs.)
Weight: PM 320 . . . . .	4.54 kg (10 lbs.)
Weight: PM 330 . . . . .	4.71 kg (10.4 lbs.)
Weight: PM 340 . . . . .	4.76 kg (10.5 lbs.)



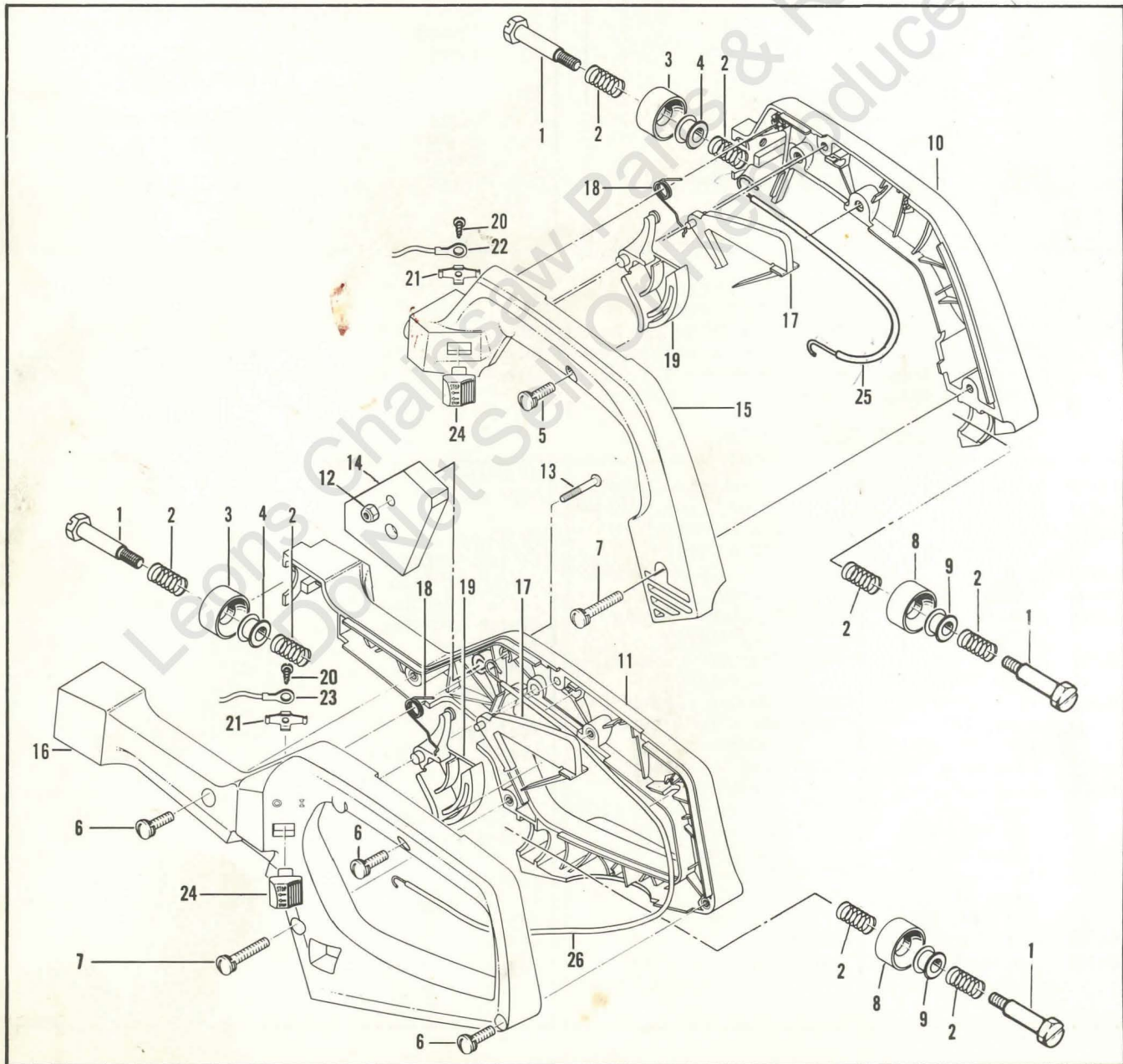
# Power Mac 310, 320, 330, 340

## FIGURE 7. HANDLE ASSEMBLIES

ITEM NO.	PART NUMBER	DESCRIPTION	UNITS PER ASY.
1	93529	Bolt - Shoulder	2
2	93530A	Spring - Mount	4
3	92704	Mount	1
4	94038	Hub - Mount	1
	93511C	① Handle Asy	
	93792	② Handle Asy	
	95149	③ Handle Asy	
5	120035	. Screw-Pan M4 x 16 (SEMS)	1
6	120035	. Screw-Pan M4 x 16 (SEMS)	3
7	120036	. Screw-Pan M4 x 25 (SEMS)	1
8	92704	. Mount	1
9	94038	. Hub - Mount	1
10	93020C	① Handle - Right half	1
11	-95113	② Handle - Long right	1
12	-101326	③ Nut - Hx lock 10-24	1

ITEM NO.	PART NUMBER	DESCRIPTION	UNITS PER ASY.
13	-104400	③ . Screw - Pan Hd 10-24 x 1-1/4	1
14	-95042	③ . Weight - Handle	1
15	93019C	. Handle - Left half	1
16	93794B	. Handle - Long left	1
17	93310	. Trigger - Safety	1
18	93515	. Spring - Trigger	1
19	93309	. Trigger - Throttle	1
20	110706	. Screw-Pan 8-18 x .50	1
21	62451	. Contact - Ignition Switch	1
22	93505A	① . Wire Asy - Stop switch	1
23	94039	② . Wire Asy - Stop switch	1
24	68846	. Button - Stop switch	1
25	93517A	① . Wire Asy - Throttle	1
26	93796B	② . Wire Asy - Throttle	1

- ① Used on PM 310 and PM 320 models.
- ② Used on PM 330 and PM 340 models.
- ③ Used on PM 330 and PM 340 models with suffix letter J.





 **McCULLOCH**



● **MANUFACTURING** ● **SALES** ● **SERVICE** ●

**McCULLOCH CORPORATION**

P.O. BOX 92180, LOS ANGELES, CALIFORNIA 90009

**INTERNATIONAL DIVISIONS:**

LOS ANGELES, CALIFORNIA, P.O. BOX 92181

*Leons Chainsaw Parts & Repair  
Do Not Sell Or Reproduce*