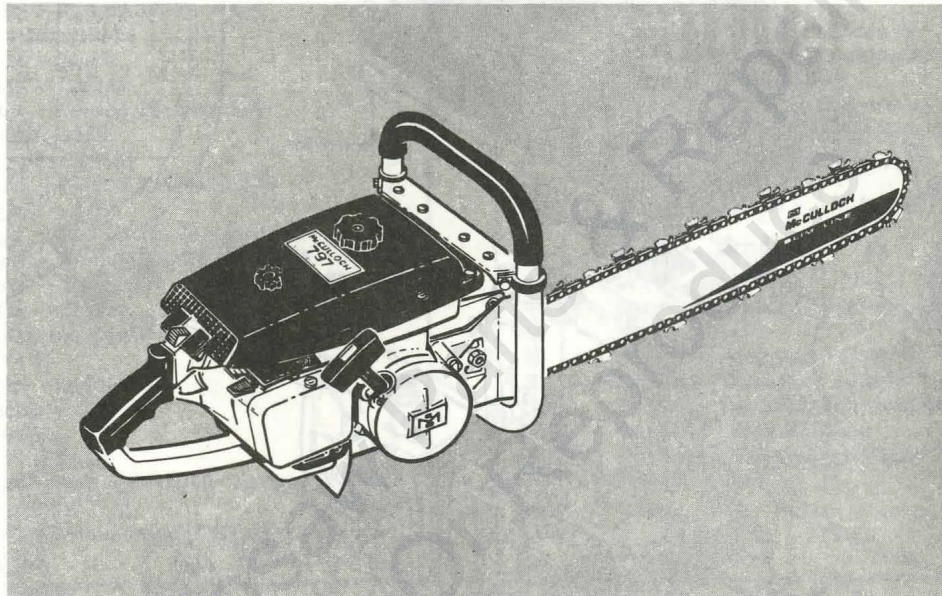


# Model 797 Chain Saw

## ILLUSTRATED PARTS LIST



February 1967

The following pages contain item-numbered illustrations of the service parts for this saw. Facing each illustration are lists which give the description and the quantity of each service part.

Part numbers will be found on the appropriate parts list sheet covering the serial number block of the particular saw. Locate the figure and item in this book, of the part in which you are interested. Then turn to the appropriate parts list sheet and following the figure and item number will be found the correct part number of the service part.

When changes in this parts list occur, either in the illustrations, in part numbers or in quantities used, these differences will be explained or shown on a superseding parts list sheet.

	Page
Figure 1. Engine Exploded View - General . . .	2
Figure 2. Fuel System Components . . . . .	4
Figure 3. Carburetor and Fuel Collector . . .	6
Figure 4. Starter and Clutch Assembly . . . . .	8
Figure 5. Chain Oiler Assemblies . . . . .	10
Figure 6. Powerhead Assembly . . . . .	12
Figure 7. Handle and Control Assembly . . . .	14



# McCULLOCH

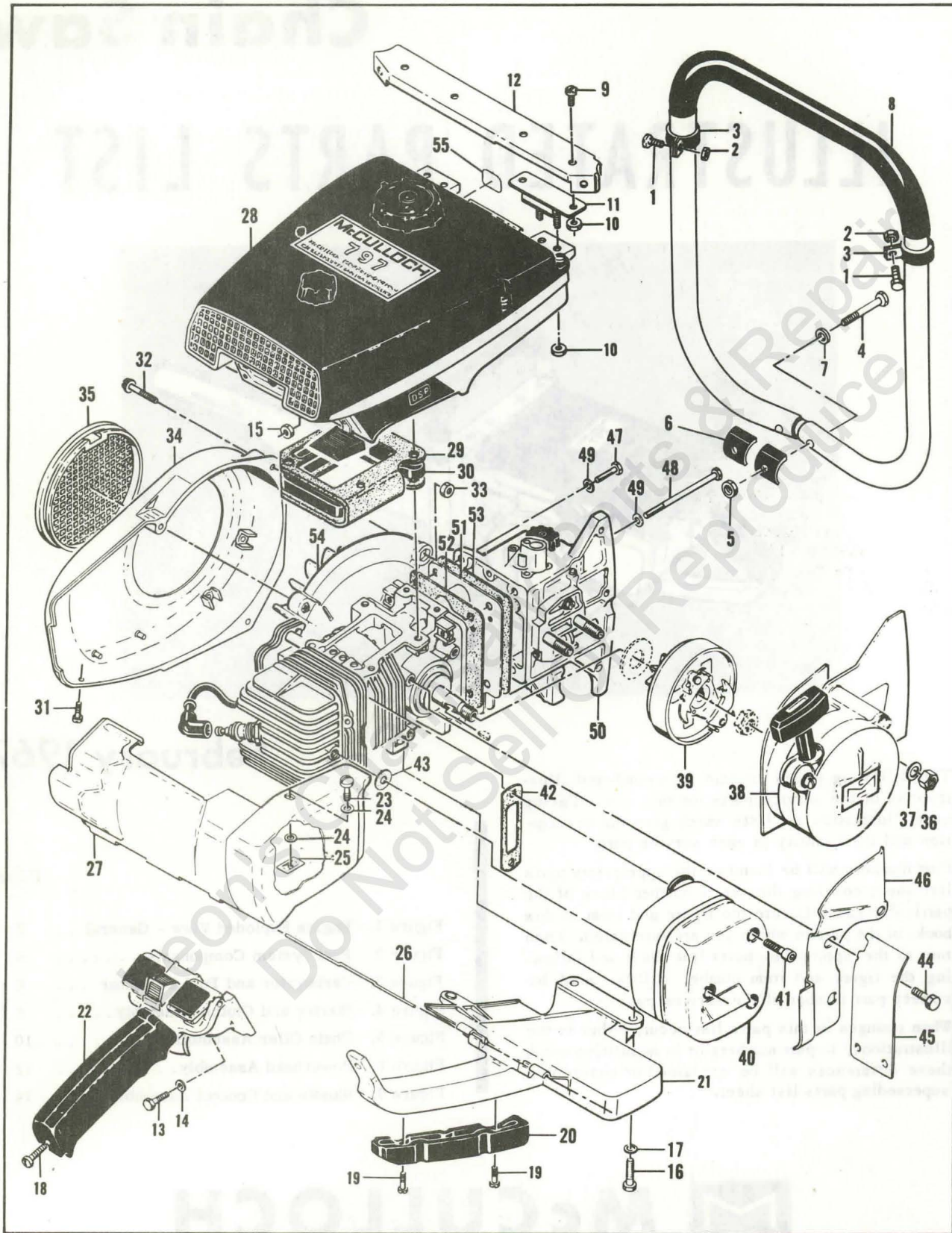


Figure 1. Engine Exploded View - General

FIGURE 1. ENGINE EXPLODED VIEW — GENERAL

Item No.	Description	Units Per Assy
1	Screw - Hex hd 10-24 x 7/8	2
2	Nut - Hex 10-24	2
3	Clamp	2
4	Screw - Hex hd 1/2 x 1-3/4	2
5	Nut - Hex 1/4-20	2
6	Insulator	2
7	Washer	2
8	Frame and Grip Assy	1
9	Screw - Pan hd 10-24 x 3/8	4
10	Nut - Hex 10-24	8
11	Mount - Shock	2
12	Brace - Frame	1
13	Screw - Hex hd 10-24 x 7/8	2
14	Washer - #10	2
15	Nut - Hex 10-24	2
16	Screw - Hex hd 1/4-20 x 7/8	2
17	Washer - 1/4	2
18	Screw - Pan hd 10-24 x 7/8	1
19	Screw - Bind hd 10-24 x 5/8	2
20	Insert - Handle	1
21	Brace - Handle	1
22	Handle and Control Assy (See Figure 7)	1
23	Screw - Special	1
24	Washer - 1/4	2
25	Speednut	1
26	Pin - Shroud	1
27	Shroud Assy - Cylinder and spark arrester	1
28	Fuel System Components (See Figure 2)	1

Item No.	Description	Units Per Assy
29	Gasket - Fuel tank and insulator	1
30	Insulator	1
31	Screw - Pan hd 10-24 x 1/2	1
32	Screw - 10-24 x 1-1/4 (SEMS)	3
33	Nut - Hex 10-24	2
34	Housing - Fan	1
35	Guard - Flywheel	1
36	Nut - Hex 3/8-24	2
37	Washer - 3/8	2
38	Starter Assy (See Figure 4)	1
39	Clutch, Drum and Bearing Assy (See Figure 4)	1
40	Spark Arrester and Screw Assy	1
41	Screw - Socket hd 10-24 x 5/8	3
42	Gasket - Spark Arrester	1
43	Washer - Insulator	1
44	Screw - 1/4-20 x 5/8 (SEMS)	3
45	Shield	1
46	Jacket - Cylinder	1
47	Screw - Hex hd 1/4-20 x 1-1/8	2
48	Screw - Hex hd 1/4-20 x 3-1/4	2
49	Washer - 1/4	4
50	Oiler Housing Assy (See Figure 5)	1
51	Cover - Crankcase bottom	1
52	Gasket - Crankcase bottom cover	1
53	Gasket - Oiler Housing	1
54	Powerhead Assy (See Figure 6)	1
55	Decal - Oiler	1

# MODEL 797

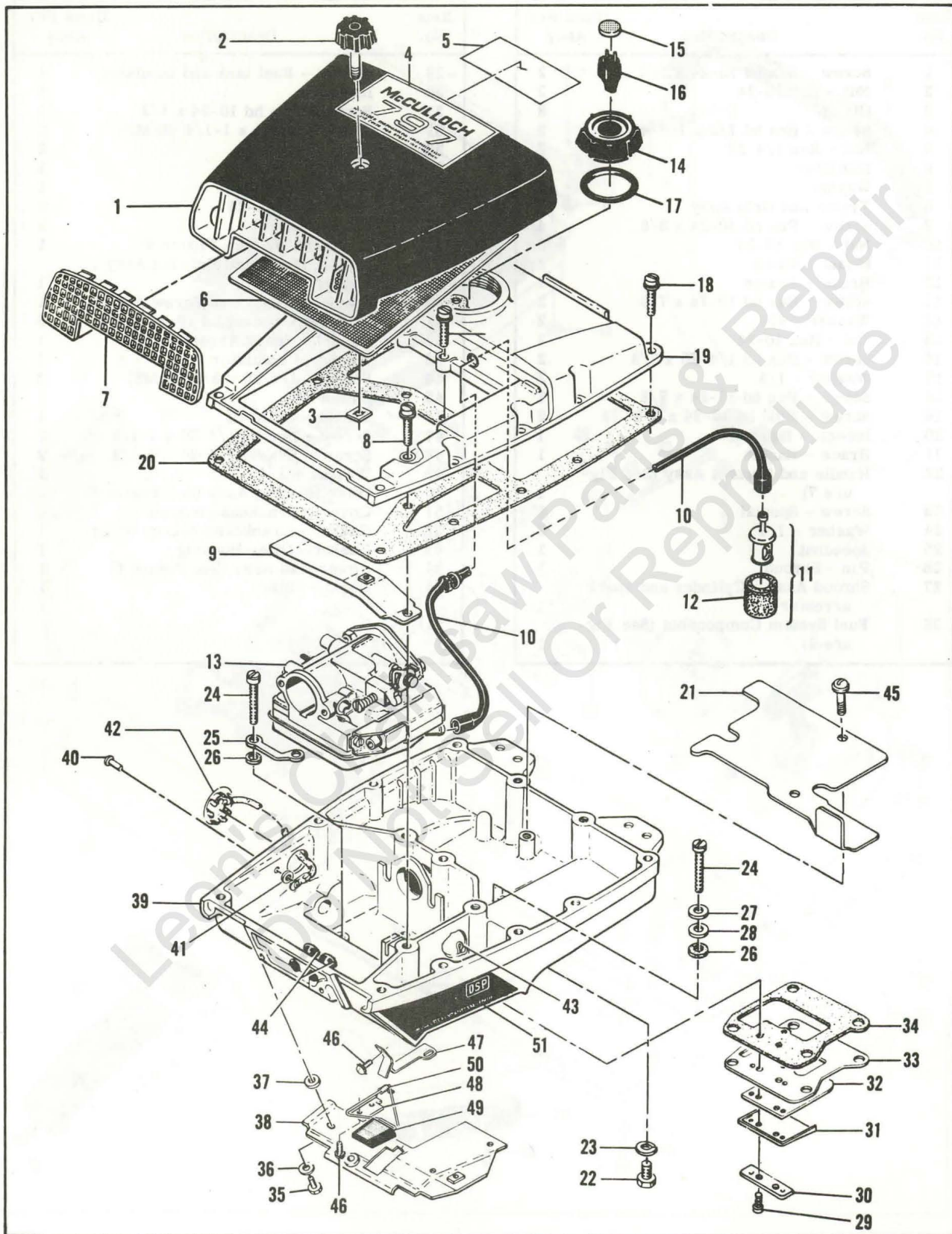


Figure 2. Fuel System Components

FIGURE 2. FUEL SYSTEM COMPONENTS

Item No.	Description	Units Per Assy	Item No.	Description	Units Per Assy
1	Cover Assy - Air cleaner	1	26	Washer - Insulating	4
2	. Knob - Air cleaner cover	1	27	Washer	2
3	. Speednut	1	28	Washer - Sealing	2
4	Nameplate	1	29	Screw - Hex hd 8-32 x 7/8	2
5	Instruction Plate	1	30	Lockplate	1
6	Screen - Air cleaner	1	31	Deflector - Fuel	1
7	Grill - Air cleaner cover	1	32	Valve - Reed	1
8	Screw - Pan hd 10-24 x 3/4	1	33	Plate - Reed	1
9	Anchor Assy - Air cleaner	1	34	Gasket	1
10	Hose - Fuel	1	35	Screw - Hex hd 10-24 x 1/2	3
11	Pickup Assy - Fuel	1	36	Washer	3
12	Filter - Fuel pickup	1	37	Washer - Insulating	2
13	Carburetor and Fuel Collector (See Figure 3)	1	38	Shield Assy - Fuel tank	1
14	Cap Assy - Fuel	1	39	Bottom Assy - Fuel tank	1
15	. Filter - Fuel cap	1	40	. Rivet	1
16	. Valve - Fuel cap	1	41	. Washer	1
17	"O" Ring - Fuel cap	1	42	. Cover Assy - Adjustment hole	1
18	Screw - Pan hd 10-24 x 3/4	14	43	. Pin - Cotter	1
19	Cover - Fuel	1	44	. Grommet	2
20	Gasket - Fuel tank	1	45	. Screw - Pan hd 6-32 x 3/8 (SEMS)	2
21	Liner - Fuel tank	1	46	. Screw - 8-32 x 3/8 (SEMS)	3
22	Screw - Hex hd 1/4-20 x 1/2	1	47	Retainer - Lever	1
23	Lockwasher	1	48	Plate - Lever retaining	1
24	Screw - Fuel tank	4	49	Lever Assy - Compression release	1
25	Lockplate	1	50	Spring - Lever	1
			51	Emblem - Fuel tank (DSP)	1

# MODEL 797

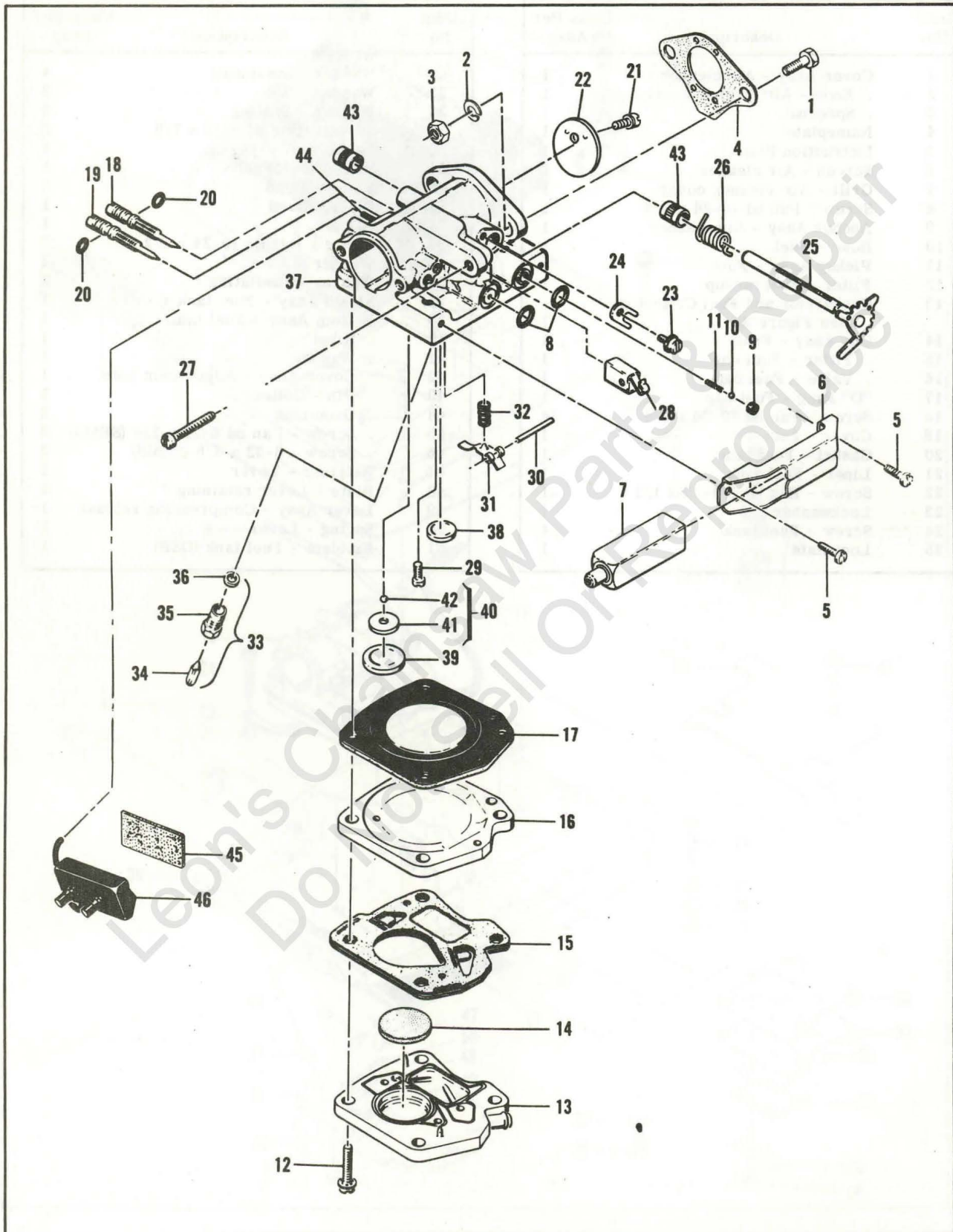


Figure 3. McCulloch Carburetor Assembly

FIGURE 3. CARBURETOR AND FUEL COLLECTOR

Item No.	Description	Units Per Assy
1	Screw - Hex hd 1/4-20 x 3/4	2
2	Lockwasher - 1/4	2
3	Nut - Hex 1/4-20	2
4	Gasket - Carburetor	1
	Carburetor Assy - McCulloch	1
5	. Screw - Pan hd 6-32 x 3/8	2
6	. Bracket - Primer mounting	1
7	. Primer Assy	1
8	. "O" Ring	2
9	. Seat - Primer valve	1
10	. Ball - Steel 1/8 in. dia	1
11	. Spring - Primer	1
12	. Screw - 10-24 x 7/8 (SEMS)	4
13	. Body - Fuel pump	1
14	. Filter - Fuel pump	1
15	. Diaphragm Assy - Fuel pump	1
16	. Plate - Carburetor diaphragm	1
17	. Diaphragm - Carburetor	1
18	. Needle - Idle adjustment	1
19	. Needle - Main adjustment	1
20	. "O" Ring	2
21	. Screw - Pan hd 4-40 x 1/4 (SEMS)	1
22	. Plate - Throttle	1
23	. Screw - 8-32 x 3/8 (SEMS)	1

Item No.	Description	Units Per Assy
24	. Clip - Shaft	1
25	. Shaft Assy - Throttle	1
26	. Spring - Idle governor	1
27	. Screw - Idle adjustment	1
28	. Guide - Throttle rod	1
29	. Screw - Pan hd 4-40 x 1/4	1
30	. Pin - Lever	1
31	. Lever - Inlet control	1
32	. Spring - Inlet control	1
33	. Valve Set - Needle and body	1
34	. Needle - Inlet control	1
35	. Body - Inlet control	1
36	. Washer - Inlet control	1
37	. Body Assy - Carburetor	1
38	. Plug - Expansion 1/2 in	1
39	. Plug - Expansion 1 in	1
40	. Set - Ball and seat	1
41	. . . . . Seat - Ball valve	1
42	. . . . . Ball - Valve	1
43	. . . . . Bushing - Body	2
44	. . . . . Tube - Collector inlet	1
45	Absorber - Fuel	1
46	Collector Assy - Fuel	1

Leon's Chainsaw Parts & Repair  
Do Not Sell Or Reproduce

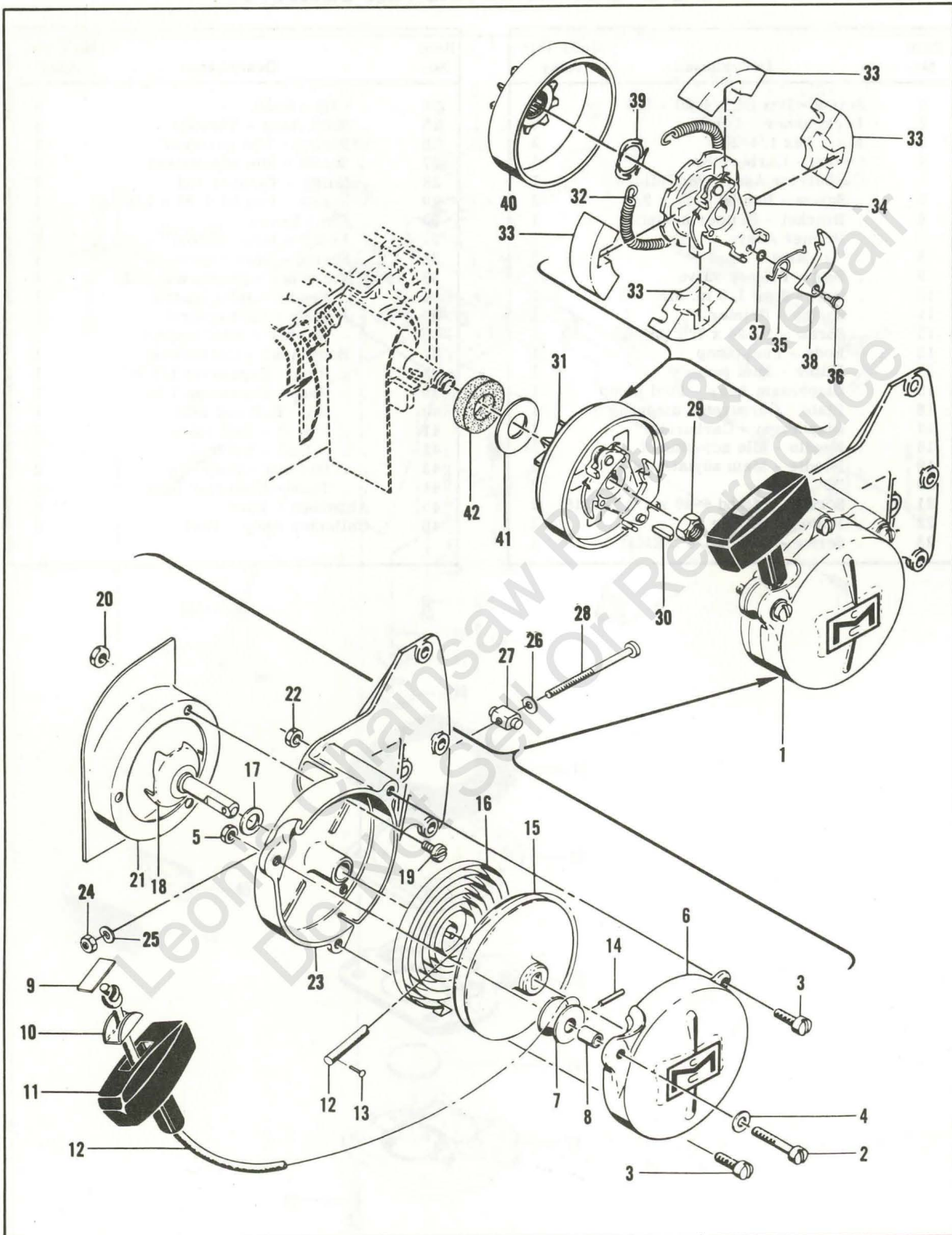


Figure 4. Starter and Clutch Assembly



FIGURE 4. STARTER AND CLUTCH ASSEMBLY

Item No.	Description	Units Per Assy	Item No.	Description	Units Per Assy
1	Starter Assy	1	23	. Starter Base Assy	1
2	. Screw - Fil hd 10-24 x 1-1/8	1	24	. Nut - Hex 1/4-28	1
3	. Screw - Fil hd 10-24 x 3/4	2	25	. Washer - Spring	1
4	. Washer	1	26	. Washer - 1/4	1
5	. Nut - Hex 10-24	2	27	. Nut - Bar adjustment	1
6	. Cover - Starter	1	28	. Screw - 1/4-20 x 3-5/8	1
7	. Pulley - Starter rope	1	29	Nut - Flexloc	1
8	. Bearing - Pulley	1	30	Key - Woodruff	1
9	. Plate - Starter handle	1	31	Clutch Assy	1
10	. Cup - Starter handle	1	32	. Spring - Shoe retaining	1
11	. Handle - Starter	1	33	. Shoe - Clutch	4
12	. Rope - Starter	1	34	. Rotor Assy - Clutch	1
13	. Rivet	1	35	. . Spring - Pawl	2
14	. Pin - Roll	1	36	. . Pin - Special	2
15	. Drum - Starter	1	37	. . Spacer - Pawl	2
16	. Spring - Starter rewind	1	38	. . Pawl - Clutch	2
17	. Washer	1	39	Spring - Thrust	1
18	. Shaft Assy - Starter	1	40	Sprocket, Clutch and Drum Assy (See Figure 5)	1
19	. Screw - Pan hd 8-32 x 5/16	3	41	Washer - Inner sprocket	1
20	. Nut - Hex 8-32	3	42	Seal - Felt sprocket	1
21	. Cover - Sawdust shield	1			
22	. Nut - Hex 10-24	2			

Leon's Chainsaw Parts  
Do Not Sell Or Reproduce

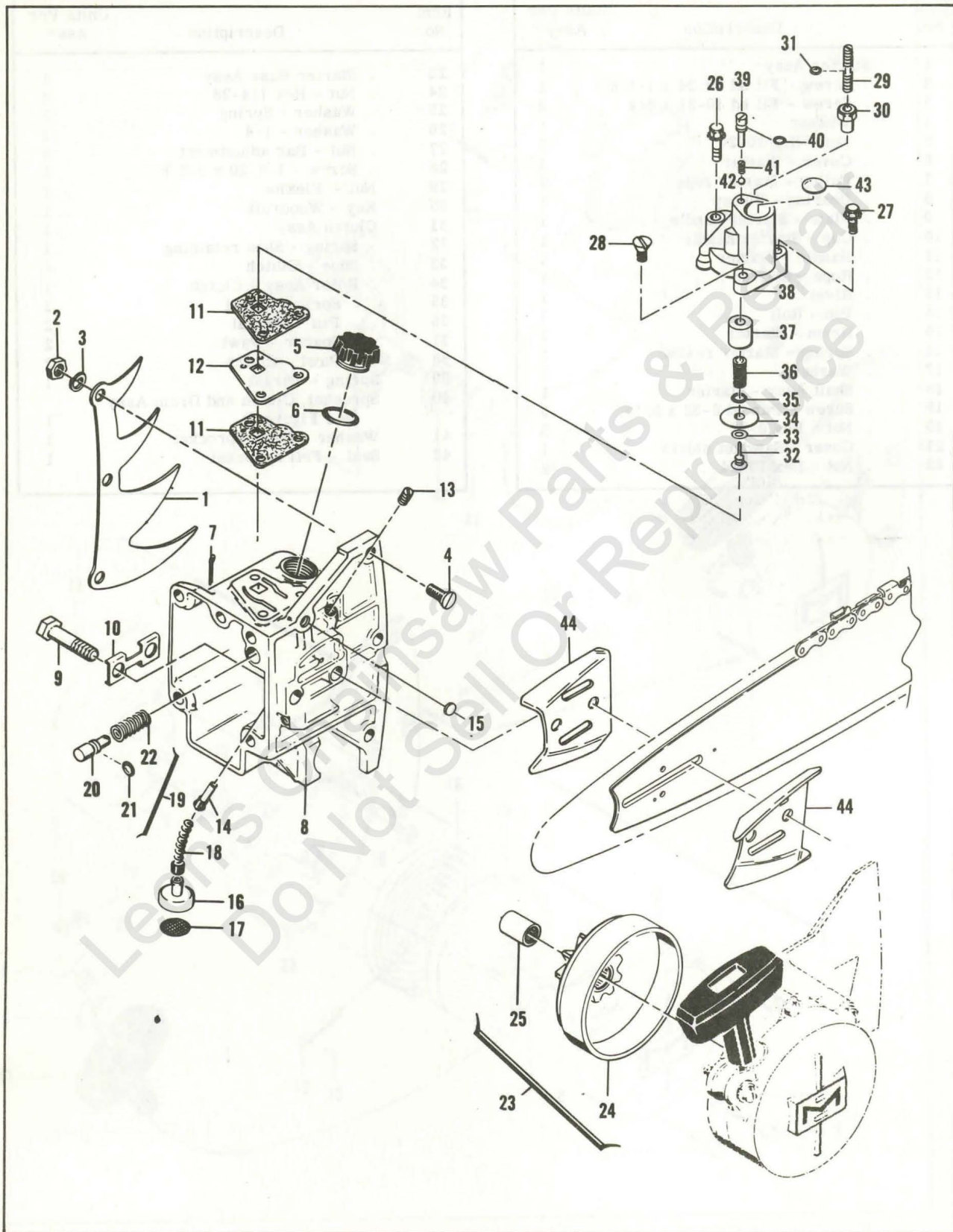


Figure 5. Chain Oiler Assemblies

FIGURE 5. CHAIN OILER ASSEMBLIES

Item No.	Description	Units Per Assy
1	Kit - Spike 4-tooth	1
2	. Nut - Hex 1/4-20	3
3	. Lockwasher	3
4	. Screw - Flat hd 1/4-20 x 3/4	3
5	Cap - Oiler tank	1
6	"O" Ring - Oiler tank cap	1
7	Pin - Cotter	1
8	Housing Assy - Oiler	1
9	. Bolt - Bar mounting	2
10	. Plate - Lock	1
11	. Gasket - Oil pump	2
12	. Spacer - Pump body	1
13	. Plug - Pipe 1/16-27	1
14	. Check Valve Assy - Oiler	1
15	. Plug - Expansion 3/8 in	1
16	Weight Assy - Oil line hose	1
17	. Screen - Oil intake	1
18	Hose - Flexible	1
19	Piston Assy - Oiler	1
20	. Piston - Oiler	1
21	. "O" Ring - Oiler piston	1
22	Spring - Oiler	1
23	Sprocket, Clutch Drum and Bearing Assy (7 tooth - .404 pitch)	1

Item No.	Description	Units Per Assy
24	. Drum and Sprocket Assy	1
25	. Bearing - Needle	1
26	Screw - Hex hd 10-24 x 1-3/4 (SEMS)	1
27	Screw - Hex hd 10-24 x 7/8 (SEMS)	1
28	Screw - Fl hd 10-24 x 3/4	1
	Pump Assy - Pulse	1
29	. Screw - Set 10-24 x 1-1/4	1
30	. Locknut - 10-24	1
31	. "O" Ring	1
32	. Piston Assy	1
33	. Washer	1
34	. Ring - Piston	1
35	. "O" Ring - Piston	1
36	. Spring - Piston	1
37	. Sleeve - Piston	1
38	. Body Assy - Pulse pump	1
39	. . Screw - Fil hd	1
40	. . Washer	1
41	. . Spring - Ball check	1
42	. . Ball - Steel .093 dia	1
43	. . Plug - Expansion 5/8 in	1
44	Plate - Bar protector	2

Leon's Chainsaw Parts & Repair  
Do Not Sell Or Reproduce

MODEL 797

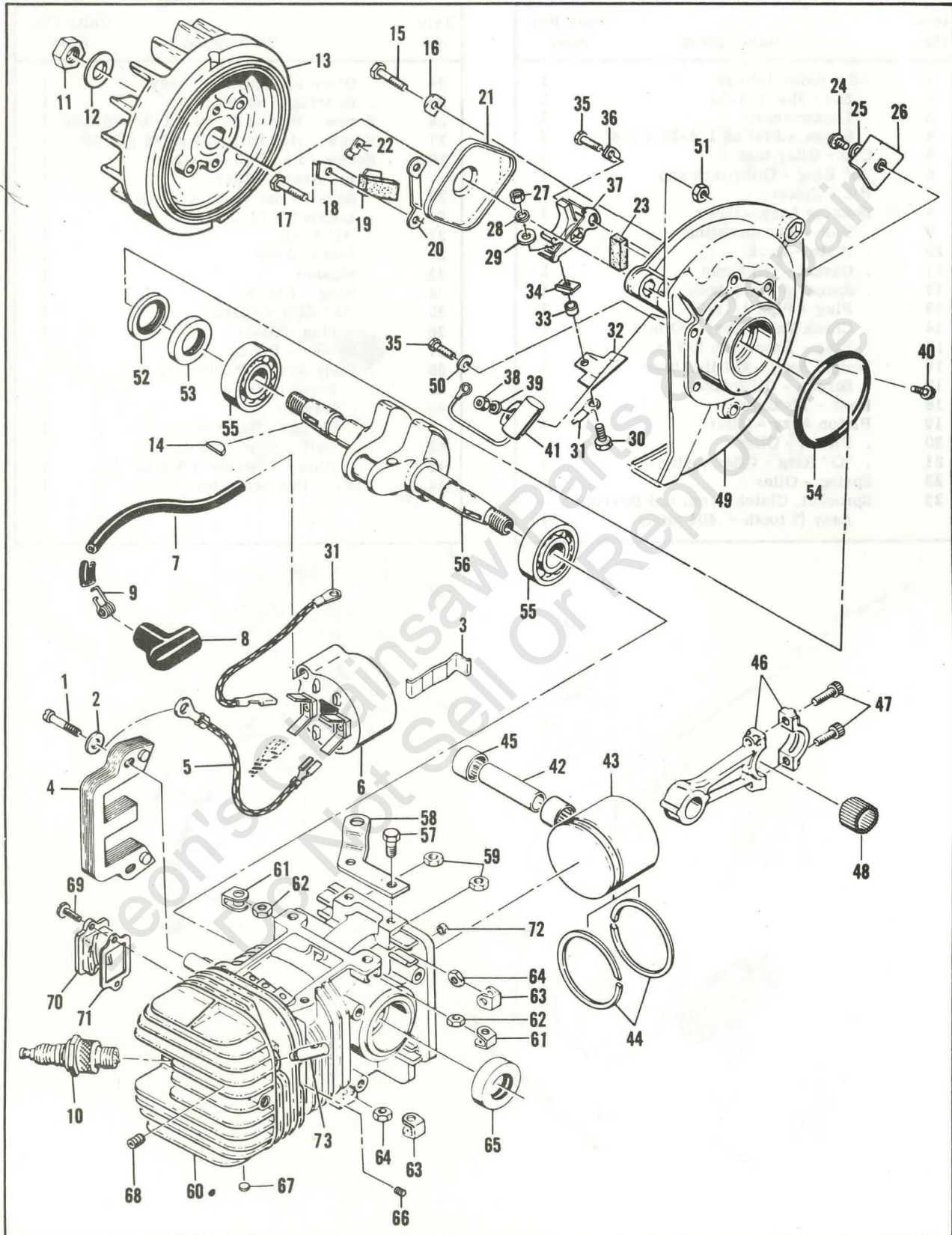


Figure 6. Powerhead Assembly

FIGURE 6. POWERHEAD ASSEMBLY

Item No.	Description	Units Per Assy
1	Screw - Hex hd 10-24 x 7/8	2
2	Washer #10	2
3	Retainer - Coil	1
4	Lamination Assy - Coil	1
5	Wire Assy - Ground	1
6	Coil and Terminal Assy	1
7	. Wire Assy - Spark Plug	1
8	. . Boot - Spark Plug	1
9	. . Connector - Spark plug wire	1
10	Spark Plug - AC CS 45T	1
11	Nut - Hex 7/16	1
12	Washer - Special	1
13	Flywheel Assy	1
14	Key - Woodruff	1
15	Screw - Hex hd 10-24 x 3/4	2
16	Lockplate	1
17	Screw - Hex hd 10-24 x 3/4	4
18	Strap - Seal	1
19	Seal - Breaker box drain	1
20	Clip - Breaker box cover	2
21	Cover - Breaker box	1
22	Speednut	1
23	Wiper - Felt	1
24	Screw - 8-32 x 3/8 (SEMS)	1
25	Washer #8	1
26	Clamp - Ignition wire	1
27	Nut - Hex 8-32	1
28	Lockwasher	1
29	Washer #8	1
30	Screw - Hex hd 8-32 x 9/16	1
31	Wire Assy - Primary	1
32	Insulator - Primary wire assy	1
33	Insulator - Ignition screw	1
34	Insulator - Breaker spring	1
35	Screw - 8-32 x 1/2 (SEMS)	2
36	Lockplate	1
37	Breaker Assy	1

Item No.	Description	Units Per Assy
38	Nut - Hex 8-32	1
39	Lockwasher #8	1
40	Screw - 8-32 x 1/2 (SEMS)	1
41	Condenser	1
42	Pin - Piston	1
43	Piston Assy	1
44	. Ring Set - Piston	1
45	. Bearing - Needle	2
46	Connecting Rod Assy	1
47	. Screw - Socket hd 10-32 x 5/8	2
48	. Roller - Needle	24
49	Crankcase Cover Assy	1
50	. Washer - Breaker retainer	1
51	. Nut - Hex 10-24	2
52	. Seal - Oil	1
53	. Seal - Oil	1
54	"O" Ring	1
55	Bearing - Ball	2
56	Crankshaft	1
57	Screw - Hex hd 10-24 x 1/2	2
58	Bracket - Fuel tank mounting	1
59	Nut - Hex 10-24	2
60	Cylinder Assy - Crankcase	1
61	. Retainer - Nut	2
62	. Nut - Hex 10-24	2
63	. Retainer - Nut	6
64	. Nut - Hex 1/4-20	6
65	. Seal - Oil	1
66	. Insert - Taplok	3
67	. Plug - Expansion 1/2 in.	3
68	. Plug - Pipe 1/16-27	1
69	Screw - 8-32 x 7/16	2
70	Cover - Boost port	1
71	Gasket - Port Cover	1
72	Seal - Pushrod	1
73	Valve - Compression release	1

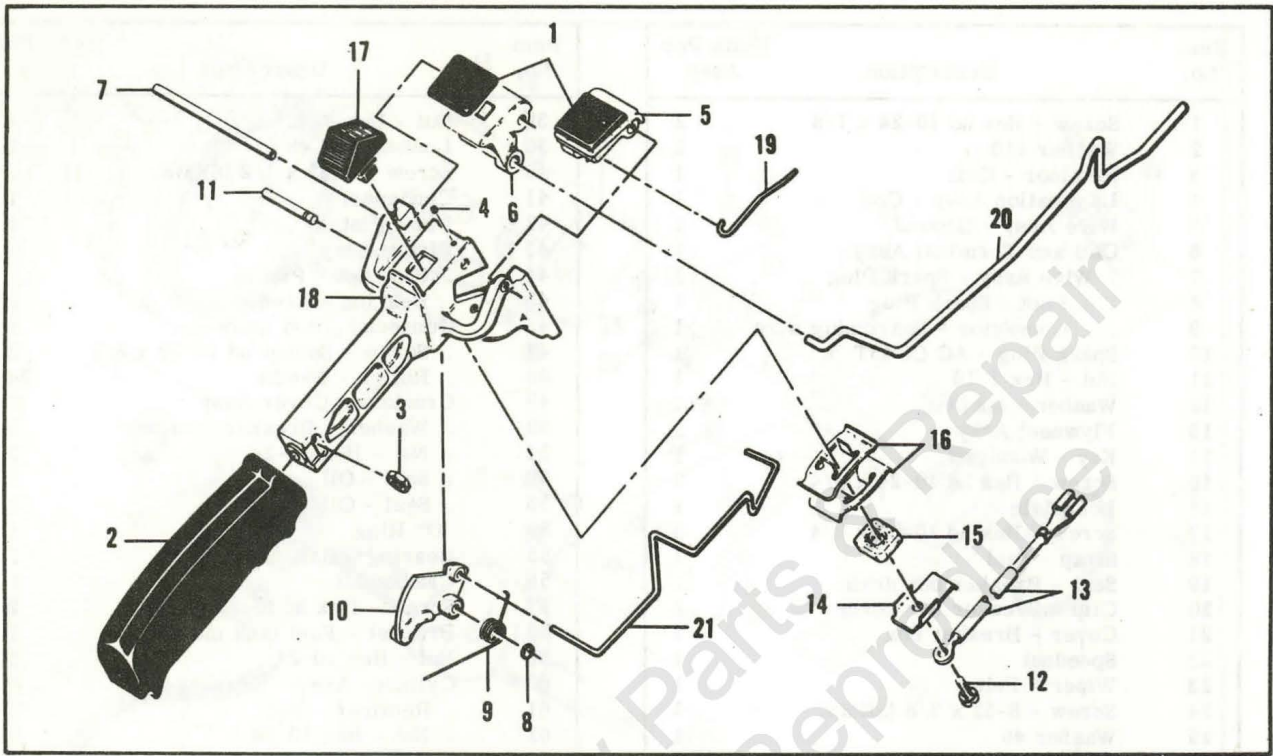


Figure 7. Handle and Control Assembly

FIGURE 7. HANDLE AND CONTROL ASSEMBLY

Item No.	Description	Units Per Assy
1	Grommet	2
	Handle and Control Assy	1
2	. Grip - Handle	1
3	. Nut - Hex 10-24	1
4	. Screw - Set 8-32 x 1/4	1
5	. Button - Primer control	1
6	. Button - Oiler control	1
7	. Shaft - Primer and oiler buttons	1
8	. Retainer - Trigger pin	1
9	. Spring - Trigger return	1
10	. Trigger	1

Item No.	Description	Units Per Assy
11	. Pin - Trigger	1
12	. Screw - Fil hd 8-32 x 1/2 (SEMS)	1
13	. Wire Assy - Stop switch	1
14	. Contact - Switch	1
15	. Insulator - Switch	1
16	. Detent - Switch	2
17	. Button - Switch	1
18	. Handle	1
19	Pushrod - Primer	1
20	Pushrod - Oiler	1
21	Pushrod - Throttle	1

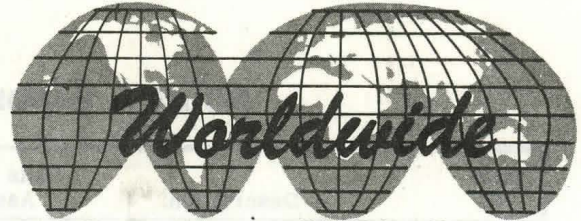
ACCESSORIES

Item No.	Description
1	Owner's Manual of Operating Instructions
2	Wrench and Screwdriver Combination
3	Wrench - Spark arrester
4	Piston Assy - 2.290
5	. Ring Set - 2.290
6	Piston Assy - 2.300
7	. Ring Set - 2.300
8	Piston Assy - 2.310
9	. Ring Set - 2.310

Item No.	Description
10	Wrench - spark plug
11	Spark arrester - half quiet
12	Spark arrester - full quiet
13	Spkt, Drum, Bearing Assy 7/16 in. 7 tooth
14	Spkt, Drum, Bearing Assy 1/2 in. 6 tooth
15	Set - Bar plates (Slimline bars)
16	Timing Guide
17	Spark plug - AC CS 42T



# McCULLOCH



● MANUFACTURING ● SALES ● SERVICE ●

## **McCULLOCH CORPORATION**

6101 WEST CENTURY BLVD., LOS ANGELES, CALIFORNIA 90045

## **McCULLOCH OF CANADA, LTD.**

77 BELFIELD ROAD, REXDALE, ONTARIO, CANADA

## **McCULLOCH INTERNATIONAL, INC.**

ARKSTRAAT 5, MECHELEN, BELGIUM  
G.P.O. BOX 879, HONG KONG, B.C.C.

## **McCULLOCH OF AUSTRALIA PTY., LTD.**

P.O. BOX 165, SOUTH GRANVILLE, N.S.W., AUSTRALIA

## **McCULLOCH INTERNATIONAL (U.S.), INC.**

P.O. BOX 45466 LOS ANGELES, CALIFORNIA, U.S.A.

*Leon's Chain Saw Parts & Repair  
Do Not Sell or Produce*