

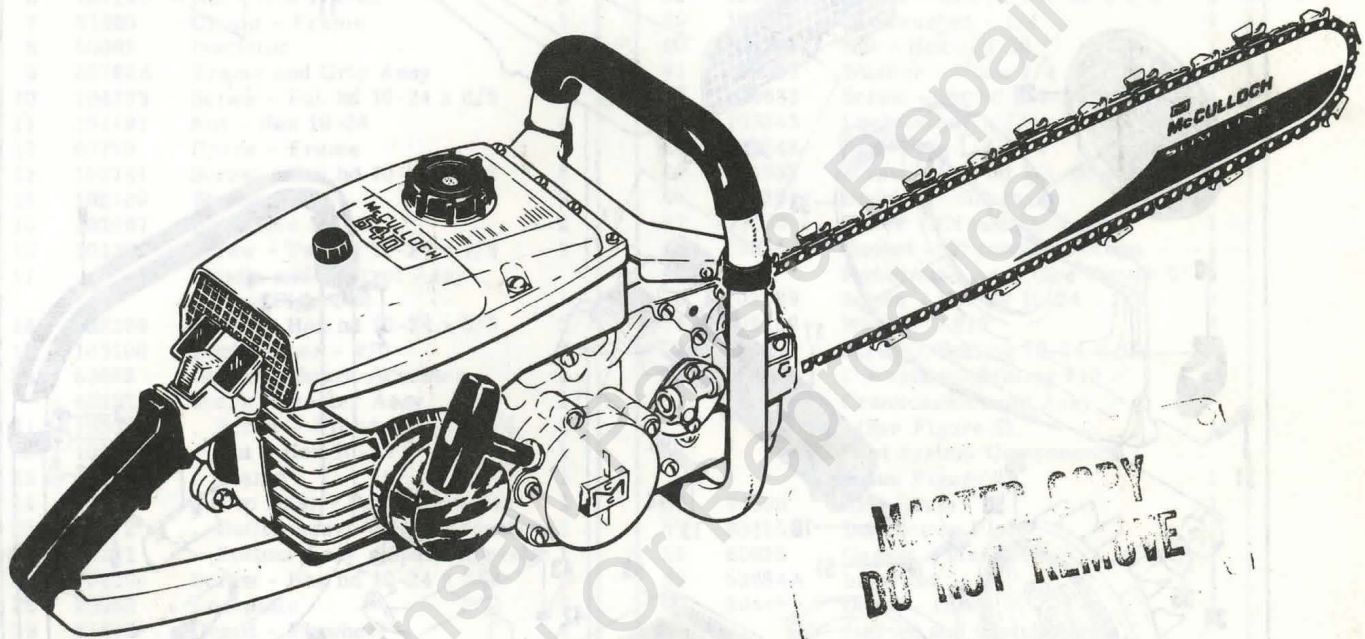
Chain Saw

MODEL 640

Serial Numbers Prefixed 10-
6-00-114

ILLUSTRATED PARTS LIST

FEBRUARY 1968



The following pages contain an Illustrated Parts List for this model. Due to small differences between engines, it is important that the Serial Number be included whenever spare parts are ordered.

The policy of McCulloch Corporation is one of continual improvement in design, manufacturing and engineering advancement wherever possible to assure still finer two-cycle power tools. Hence, specifications, equipment, colors, design and manufacturer's suggested list prices are subject to change without notice and McCulloch Corporation reserves the right to make such changes without prior notification or obligation to backfit or supply backfit components for units previously shipped from the factory.

	Page
Figure 1. Engine Exploded View - General	2
Figure 2. Fuel System Components	4
Figure 3. McCulloch Carburetor Assembly	6
Figure 4. Starter and Clutch Assemblies	8
Figure 5. Powerhead Assembly	10
Figure 6. Transmission Assembly	12
Figure 7. Lockplate Adjusting Assembly, Bar and Chain .	14
Figure 8. Plunge Bow Saw Assembly	16
Figure 9. Handle and Control Assembly	18



McCULLOCH

MODEL
640

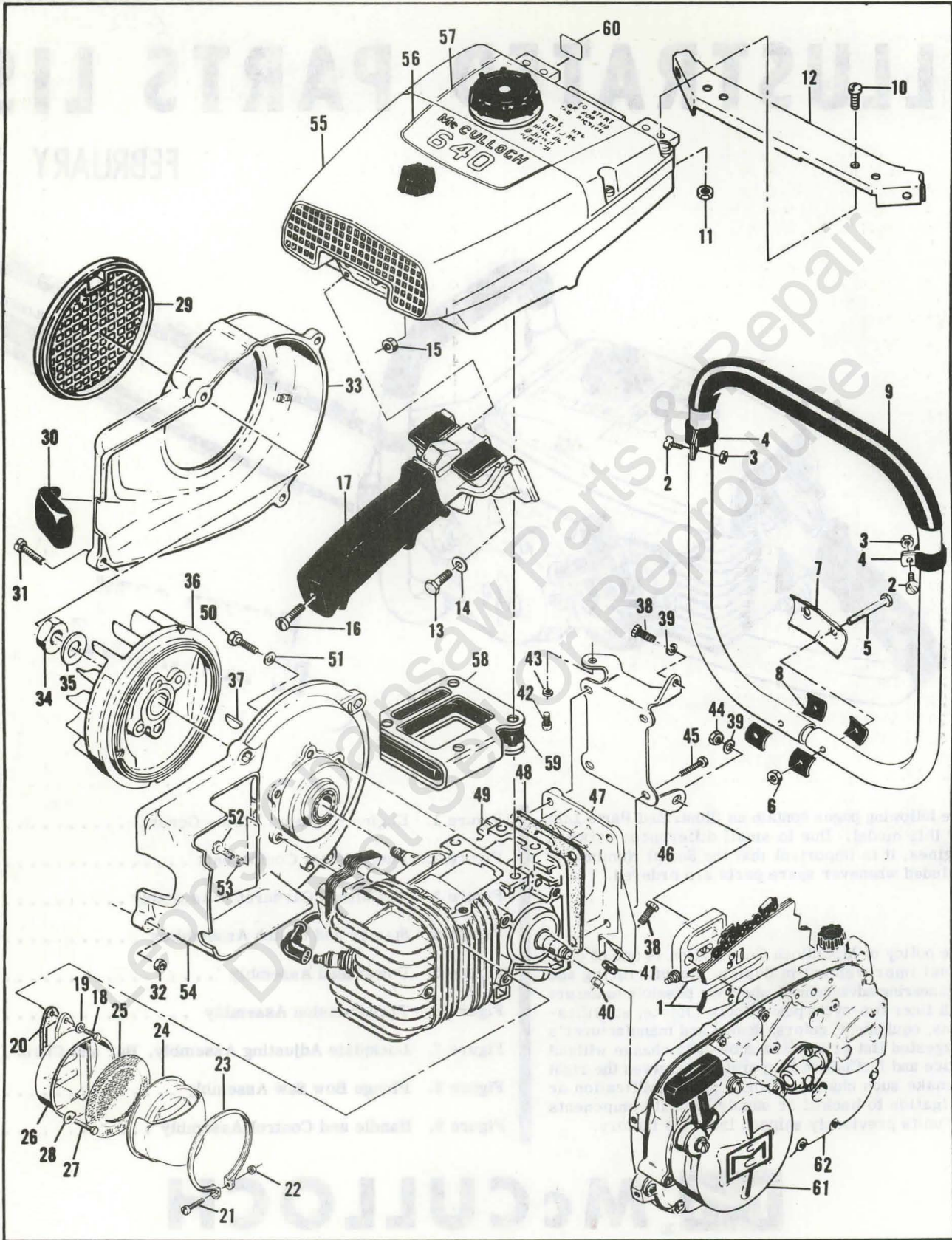


Figure 1. Engine Exploded View - General

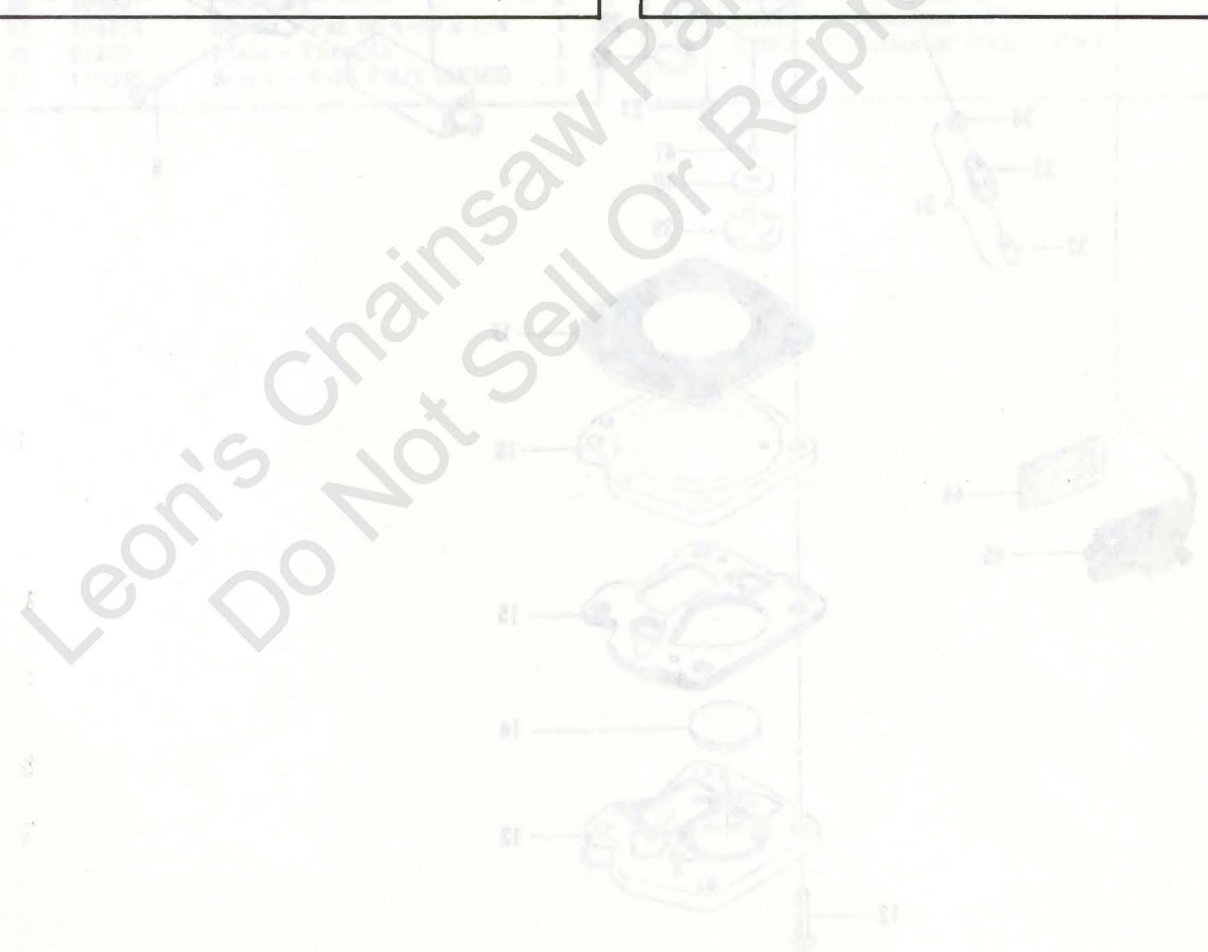
FIGURE 1. ENGINE EXPLODED VIEW — GENERAL

Item No.	Part Number	Description	Units Per Assy
1		Bar, Chain and Lockplate Adjusting Assy (See Figure 7)	1
2	102761	Screw - Hex hd 10-24 x 7/8	2
3	105367	Nut - Hex 10-24	2
4	103923	Clamp	2
5	102125	Screw - Hex hd 1/4-20 x 1-3/4	2
6	101143	Nut - Hex 1/4-20	2
7	51660	Clamp - Frame	1
8	50062	Insulator	4
9	60766A	Frame and Grip Assy	1
10	104393	Screw - Pan hd 10-24 x 3/8	4
11	101191	Nut - Hex 10-24	4
12	60770	Brace - Frame	1
13	102761	Screw - Hex hd 10-24 x 7/8	2
14	102189	Washer #10	2
15	102067	Nut - Hex 10-24	2
16	104397	Screw - Pan hd 10-24 x 7/8	1
17		Handle and Control Assy (See Figure 9)	1
18	102388	Screw - Hex hd 10-24 x 5/8	2
19	103100	Lockwasher - #10	2
20	53652	Gasket - Spark Arrester	1
	68237	Spark Arrester Assy	1
21	105052	. Screw - Fil hd 10-24 x 3/4	1
22	105369	. Nut - Hex 10-24	1
23	63171	. Clamp	1
24	68238	. Top Assy - Spark arrester	1
25	63172	. Baffle Assy - Spark arrester	1
26	68241	. Bottom Assy - Spark arrester	1
27	106198	Screw - Hex hd 10-24 x 7/8	1
28	28052	Lockplate	1
29	55615	Guard - Flywheel	1
30	57565	Cover Assy - Spark plug	1
31	104815	Screw - Hex hd 10-24 x 7/8 (SEMS)	4

Item No.	Part Number	Description	Units Per Assy
32	101326	Nut - Hex 10-24	2
33	61133	Housing - Fan	1
34	101179	Nut - Hex 7/16	1
35	101270	Washer - 7/16	1
36	68281	Flywheel Assy	1
37	103879	Key - Woodruff	1
38	100882	Screw - Hex hd 1/4-20 x 3/4	2
39	100153	Lockwasher - 1/4	2
40	105394	Nut - Hex 1/4-20	1
41	100005	Washer - Plain 1/4	1
42	100633	Screw - Skt hd 1/4-20 x 1/2	1
43	105043	Lockwasher - 1/4	1
44	100248	Nut - Hex 1/4-28	1
45	101982	Screw - Hex hd 1/4-20 x 1	4
46	61225	Bracket - Gearcase	1
47	53473	Cover - Crankcase bottom	1
48	65654	Gasket - Crankcase bottom	1
49		Powerhead Assy (See Figure 5)	1
50	102289	Screw - Hex hd 10-24 x 3/4	4
51	102189	Washer - #10	3
52	55494	Screw - Sealing 10-24 x 3/4	2
53	55492	. Washer - Sealing #10	2
54		Crankcase Cover Assy (See Figure 5)	1
55		Fuel System Components (See Figure 2)	1
56	64596	Nameplate	1
57	60425B	Instruction Plate	1
58	65625	Gasket - Insulator	1
59	53684A	Insulator	1
60	59445	Decal - Oiler	1
61		Starter and Clutch Assys (See Figure 4)	1
62		Transmission Assy (See Figure 6)	1

FIGURE 2. FUEL SYSTEM COMPONENTS

Item No.	Part Number	Description	Units Per Assy	Item No.	Part Number	Description	Units Per Assy
1	60427A	Cover Assy - Air cleaner	1	21	58376	Lockplate - Fuel tank	1
2	60243	. Knob - Air cleaner cover	1	22	68203	Washer - Insulating	4
3	103741	. Speednut	1	23	102189	Washer - #10	2
4	67931	Screen - Air cleaner	1	24	103744	Washer - Sealing	2
5	55659	Grill - Air cleaner cover	1	25	103740	Screw - Hex hd 8-32 x 5/8	2
6	104396	Screw - Pan hd 10-24 x 3/4	1	26	51480	Lockplate	1
7	55634	Anchor Assy - Air cleaner	1	27	57658A	Clamp - Reed	1
	63831	Hose Assy	1	28	66274	Deflector - Fuel	1
8	63669	. Hose	1	29	48593	Valve - Reed	1
9	53679B	. Pick-up Assy	1	30	53685C	Plate - Reed	1
10	61159	. . Filter	1	31	65657	Gasket - Fuel tank	1
11		Carburetor Assy (See Figure 3)	1		62448	Bottom Assy - Fuel tank	1
12	55934B	Cap Assy - Fuel	1	32	104504	. Rivet	1
13	55063	. Filter - Fuel cap	1	33	101871	. Washer - 1/8	1
14	53766A	. Valve - Check	1	34	51396A	. Cover Assy - Adjustment hole	1
15	101348	"O" Ring - Fuel cap	1	35	104310	. Pin - Cotter	1
16	104396	Screw - Pan hd 10-24 x 3/4	14	36	68258	. Grommet	2
17	63667	Cover - Fuel tank	1	37	110054	. Screw - Pan hd 6-32 x 3/8	2
18	65632	Gasket - Cover	1	38	103819	. Rivet	1
19	63650	Liner - Fuel tank	1	39	103708	. Bushing	1
20	55948A	Screw - Hex hd 10-24 x 1-1/8	4				



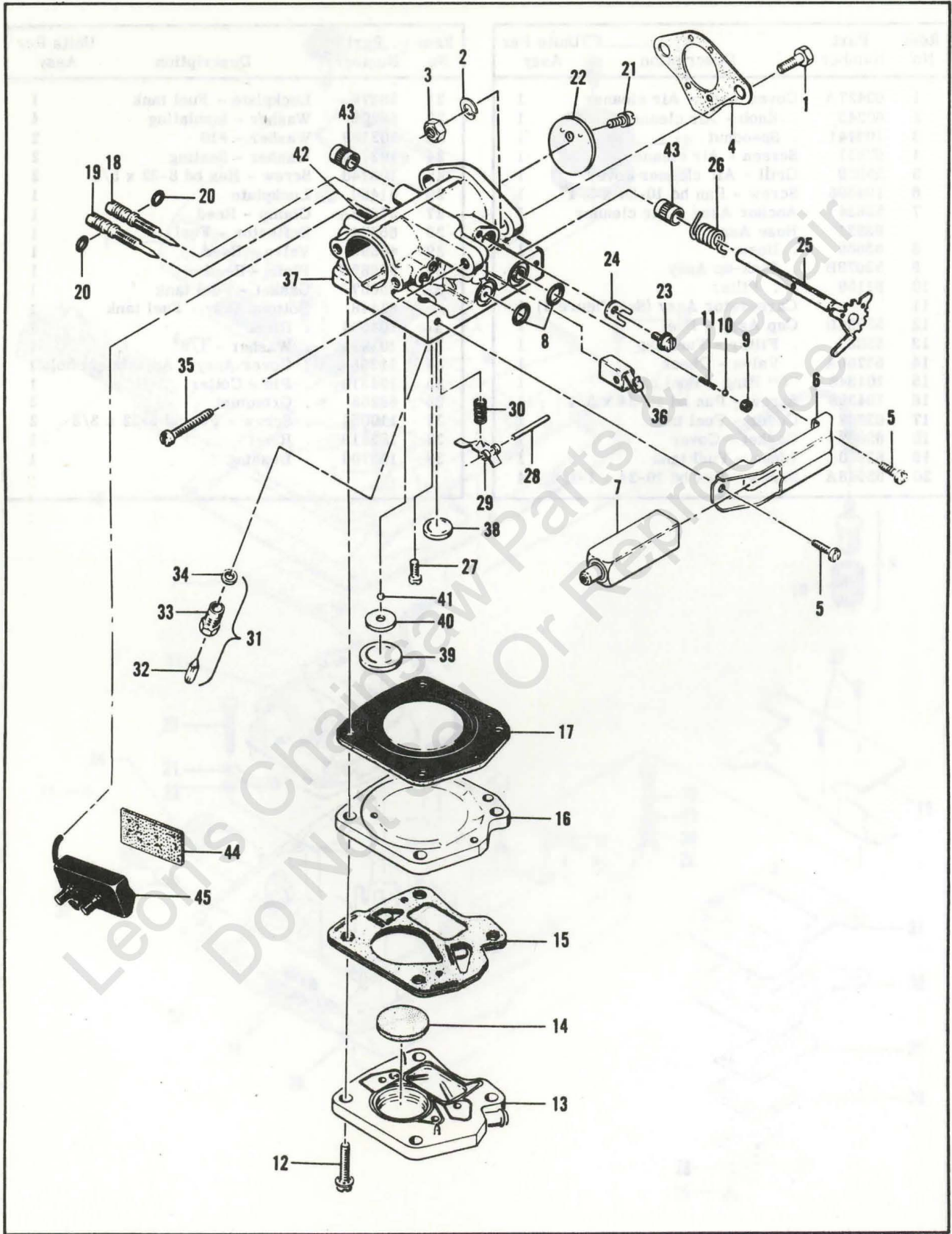


Figure 3. McCulloch Carburetor Assembly

FIGURE 3. CARBURETOR ASSEMBLY

Item No.	Part Number	Description	Units Per Assy
1	100882	Screw - Hex hd 1/4-20 x 3/4	2
2	101476	Lockwasher - 1/4	2
3	103242	Nut - Hex 1/4-20	2
4	65586	Gasket - Carburetor	1
	67395	Carburetor Assy - McCulloch	1
5	110054	. Screw - Pan hd 6-32 x 3/8	2
6	53440	. Bracket - Primer mounting	1
7	53449	. Primer Assy	1
8	101056	. "O" Ring	2
9	59480	. Seat - Primer valve	1
10	100302	. Ball - Steel 1/8 in. dia.	1
11	28754	. Spring - Primer	1
12	104520	. Screw - 10-24 x 7/8	4
13	48898	. Body - Fuel pump	1
14	57277A	. Filter - Fuel pump	1
15	66442	. Diaphragm Assy - Fuel pump	1
16	48901	. Plate - Carburetor diaphragm	1
17	55067C	. Diaphragm - Carburetor	1
18	53948	. Needle - Idle adjustment	1
19	53311	. Needle - Main adjustment	1
20	104001	. "O" Ring	2
21	104814	. Screw - Pan hd 4-40 x 1/4	1
22	61360	. Plate - Throttle	1
23	110055	. Screw - 8-32 x 3/8 (SEMS)	1

Item No.	Part Number	Description	Units Per Assy
24	55082	. Clip - Shaft	1
25	61854A	. Shaft Assy - Throttle	1
26	61858	. Spring - Governor	1
27	104164	. Screw - Pan hd 4-40 x 1/4	1
28	104305	. Pin - Lever	1
29	55688	. Lever - Inlet control	1
30	57172	. Spring - Inlet control	1
31	60163A	. Valve Set - Needle and body	1
32	63038	. . Needle - Inlet valve	1
33	58969	. . Body - Inlet valve	1
34	55689	. . Washer - valve	1
35	62910	. Screw - Fil hd 8-32 x 15/16	1
36	61108	. Guide - Throttle rod	1
37	66420	. Body Assy - Carburetor	1
38	110179	. . Plug - Expansion 1/2 in.	1
39	104407	. . Plug - Expansion 1 in.	1
	61155	. . Set - Ball and Seat	1
40	61152	. . . Seat - Ball check	1
41	61151	. . . Ball - Check	1
42	47523	. . Tube - Fuel	1
43	55062A	. . Bushing - Body	2
44	58865	Absorber - Fuel	1
45	63651	Collector Assy - Fuel	1



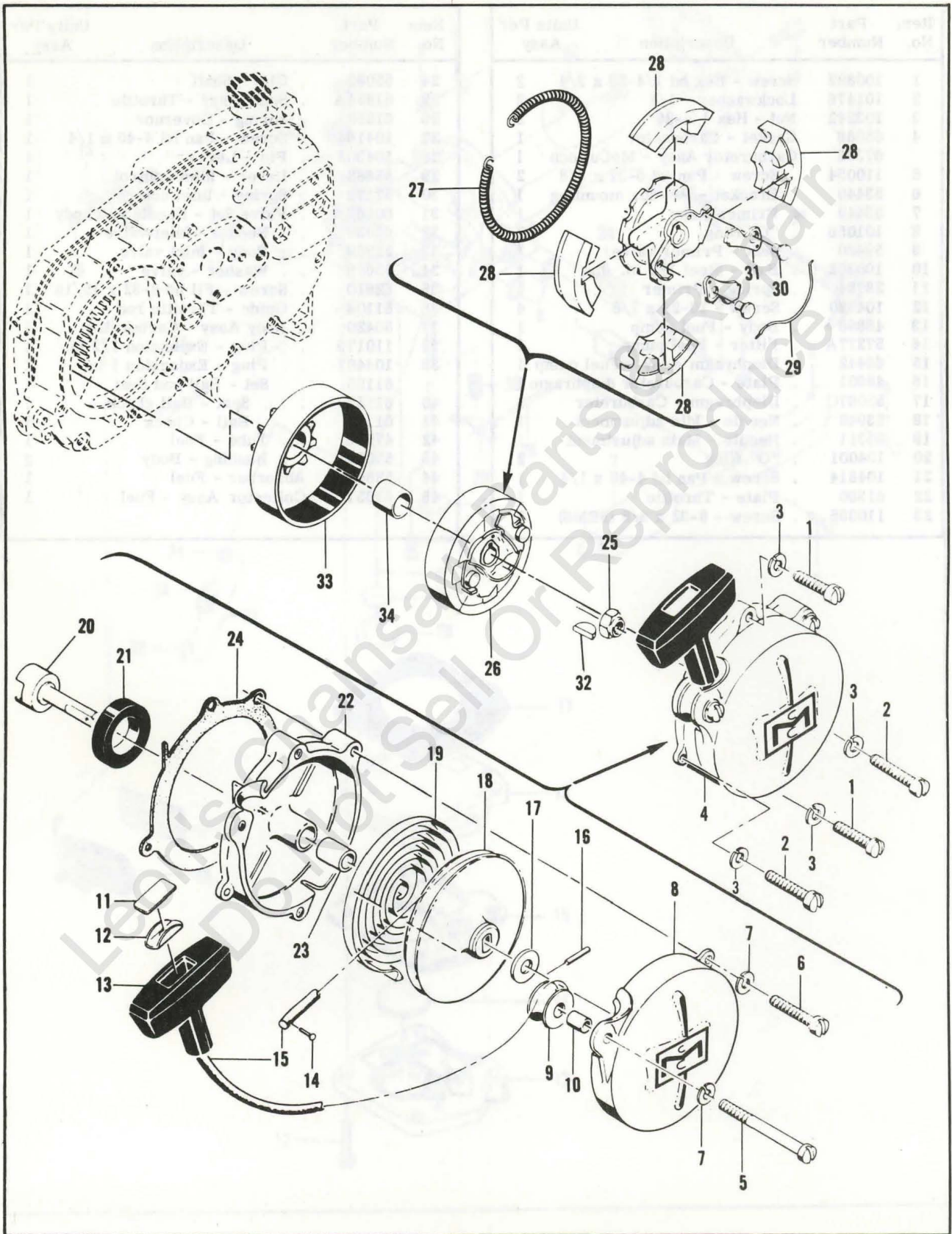


Figure 4. Starter and Clutch Assemblies

FIGURE 4. STARTER AND CLUTCH ASSEMBLIES

Item No.	Part Number	Description	Units Per Assy	Item No.	Part Number	Description	Units Per Assy
1	102212	Screw - Fil hd 10-24 x 1-3/4	2	19	51665	. Spring - Starter rewind	1
2	102135	Screw - Fil hd 10-24 x 2	2	20	55110A	. Shaft - Starter	1
3	101194	Lockwasher	4	21	104439	. Seal - Oil	1
4	55129C	Starter Assy	1	22	51649B	. Base Assy - Starter	1
5	103840	. Screw - Fil hd 10-24 x 3-1/2	1	23	55591	. . Bearing - Starter base	1
6	102135	. Screw - Fil hd 10-24 x 2	1	24	55983	Gasket - Starter base	1
7	101194	. Lockwasher	2	25	103746	Nut - Flexloc	1
8	55024B	. Cover - Starter	1	26	61227	Clutch Assy	1
9	51138	. Pulley - Starter rope	1	27	58850	. Spring - Shoe retaining	1
10	103536	. Bearing - Pulley	1	28	61228	. Shoe - Clutch	4
11	57232	. Plate - Starter handle	1	29	28766A	. Spring - Starter pawl	1
12	57231	. Cup - Starter handle	1		61322	. Rotor and Pawl Assy - Clutch	1
13	57230	. Handle - Starter	1	30	28917	. . Pin - Starter pawl	1
14	101136	. Rivet	1	31	28765	. . Pawl - Starter	1
15	28716	. Rope	1	32	103879	Key - Woodruff	1
16	103047	. Pin	1	33	61321	Drum and Liner Assy - Clutch	1
17	104457	. Washer - 3/8	1	34	51700	. Bushing - Clutch drum	1
18	55871	. Drum - Starter	1				

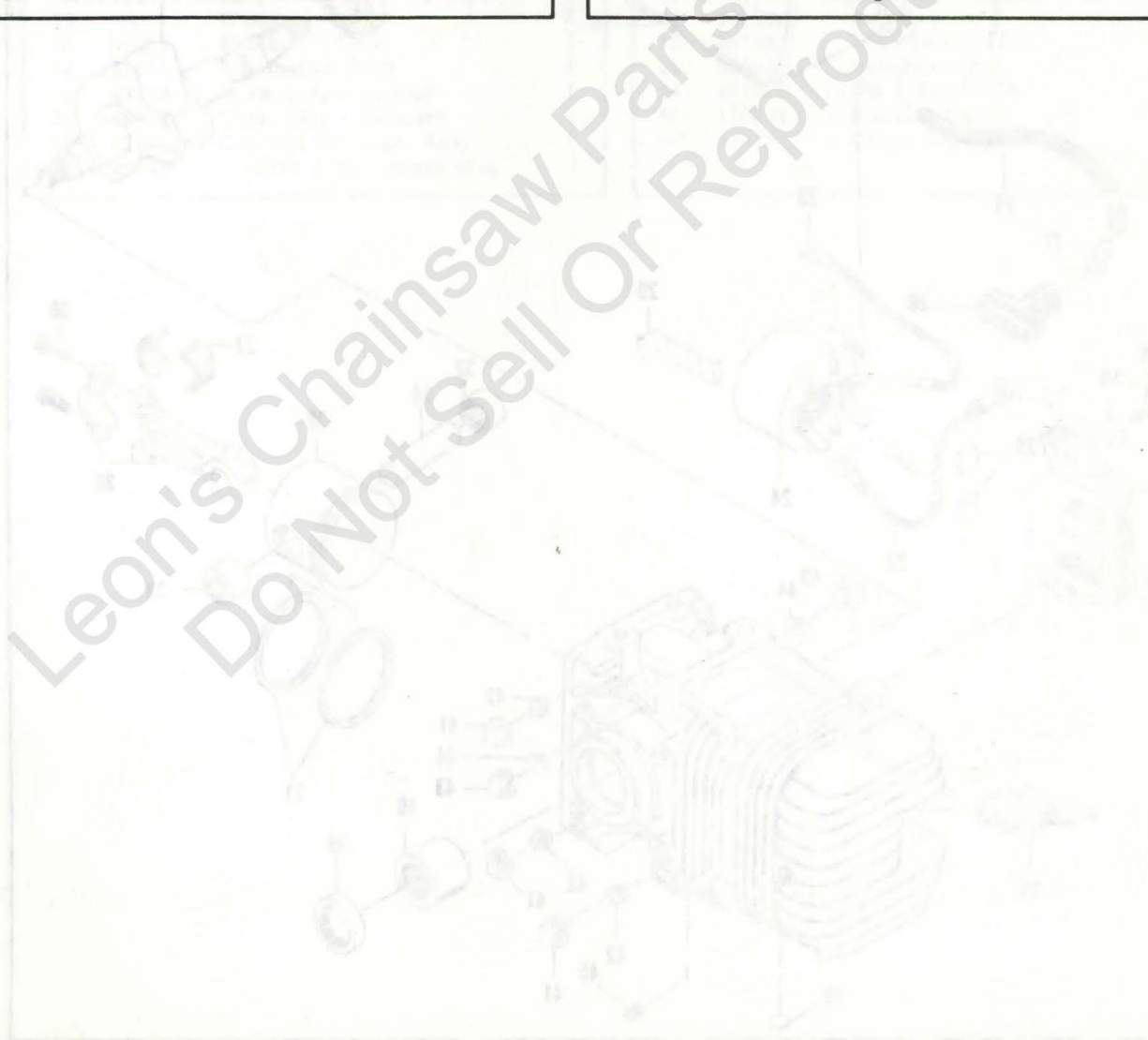


FIGURE 4 PLATE AND CLUTCH ASSEMBLY

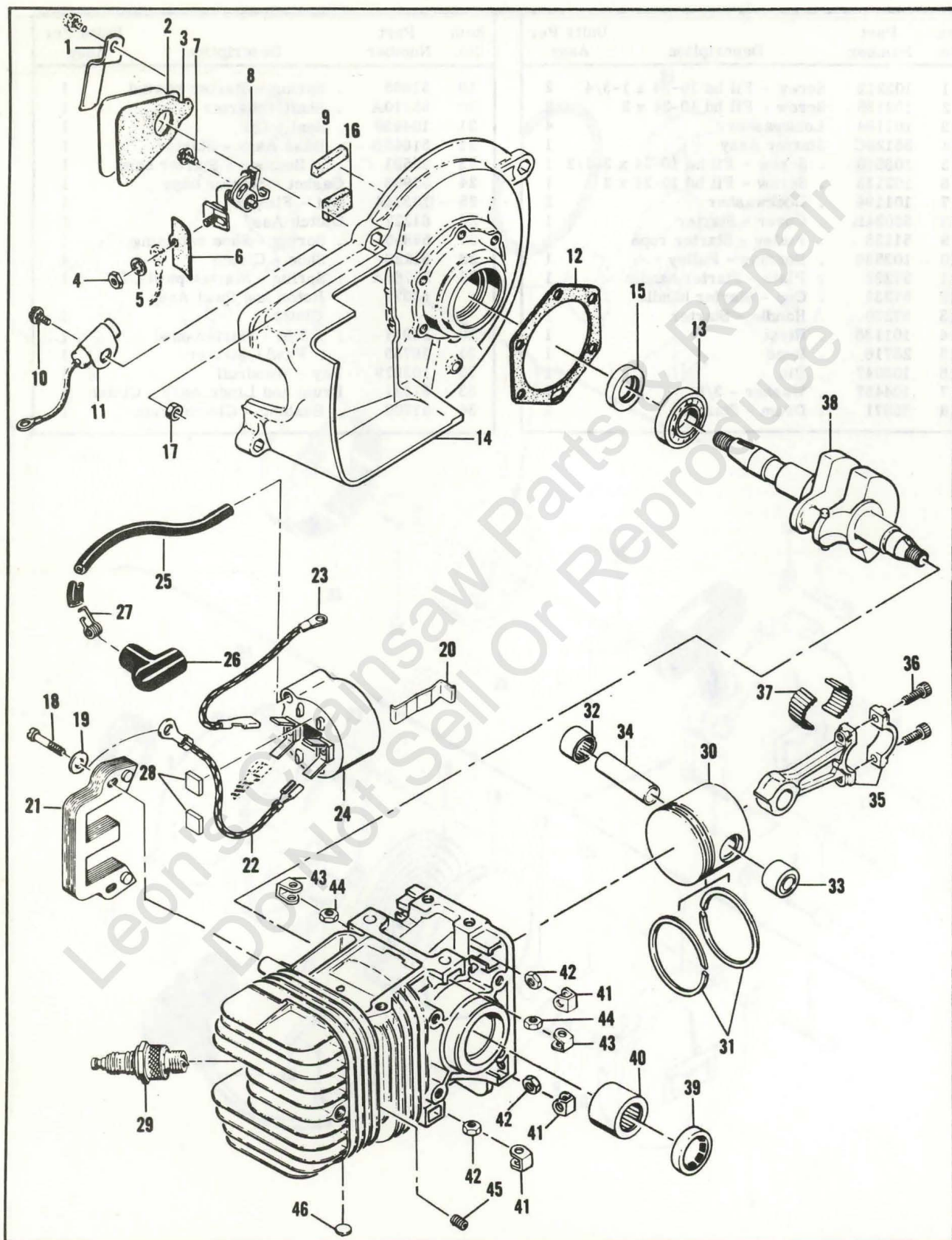


Figure 5. Powerhead Assembly

FIGURE 5. POWER HEAD ASSEMBLY

Item No.	Part Number	Description	Units Per Assy	Item No.	Part Number	Description	Units Per Assy
1	50671	Retainer - Breaker box cover	1	26	62926	. . Boot - Spark plug	1
2	50588A	Cover - Breaker box	1	27	62932	. . Connector	1
3	65584	Gasket - Breaker box cover	1	28	67863	. Spacer - Lamination	2
4	100251	Nut - Hex 8-32	1	29		Spark Plug - 14 mm	1
5	100057	Lockwasher - #8 internal	1	30	53936	Piston Assy	1
6	50381A	Insulator - Breaker terminal	1	31	55123	. Ring Set - Piston (set of 2 rings)	1
7	103672	Screw - 8-32 x 1/2 (SEMS)	1	32	101206	. Bearing - Needle	1
8	50076A	Breaker Assy	1	33	104378	. Bearing - Needle (closed end)	1
9	50664	Felt - Breaker box	1	34	57198	Pin - Piston	1
10	103672	Screw - 8-32 x 1/2 (SEMS)	1	35	47903	Connecting Rod Assy	1
11	50074	Condenser	1	36	60210A	. Screw - Special	2
12	51240	Gasket - Crankcase cover	1	37	102742	. Roller - Needle	24
13	100824	Bearing - Ball	1	38	50756A	Crankshaft	1
14	57126A	Cover Assy - Crankcase	1	68633		Crankcase Assy	1
15	50663	. Seal - Oil	1	39	104128	. Seal - Oil	1
16	54184	. Felt - Wiper	1	40	104129	. Bearing - Needle	1
17	101326	. Nut - Hex 10-24	2	41	18556A	. Retainer - Nut	6
18	104815	Screw - 10-24 x 7/8 (SEMS)	2	42	105394	. Nut - Hex 1/4-20	6
19	100352	Washer - #10	2	43	28053	. Retainer - Nut	2
20	51253	Retainer - Coil	1	44	101326	. Nut - Hex 10-24	2
21	51251	Lamination Assy	1	45	110034	. Insert - Taplok	2
22	63639	Wire Assy - Ground	1	46	110179	. Plug - Expansion	3
23	68636	Wire Assy - Primary	1				
24	67921	Coil and Terminal Assy	1				
25	63640	. Wire Assy - Spark plug	1				



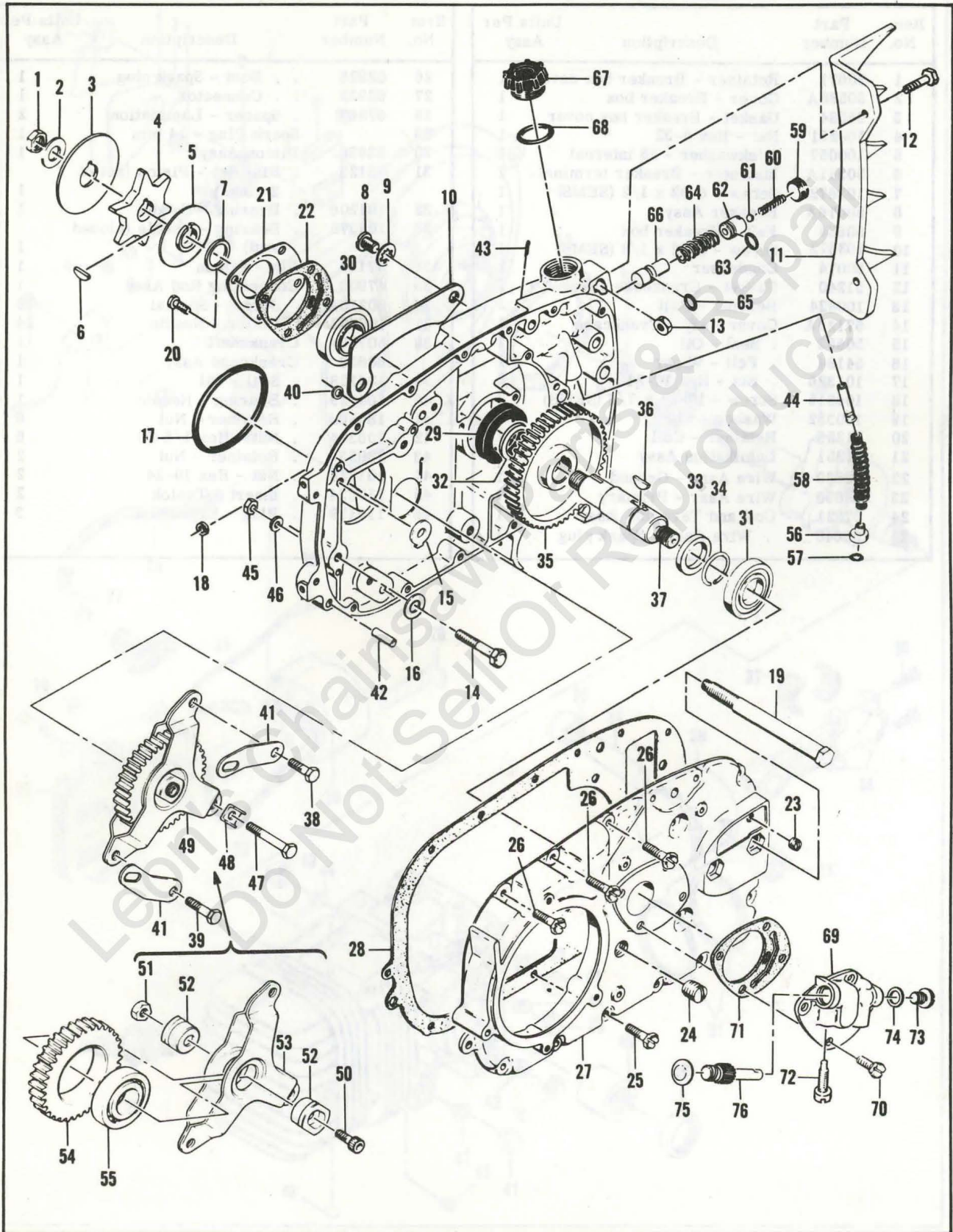


Figure 6. Transmission Assembly

FIGURE 6. TRANSMISSION ASSEMBLY

Item No.	Part Number	Description	Units Per Assy
1	60972	Nut - Special	1
2	100593	Washer - 7/16	1
3	51627	Plate - Chain guide	1
4	36644A	Sprocket - 7 tooth, 1/2 in. pitch	1
	36020B	Sprocket - 6 tooth, 1/2 in. pitch	alternate
	52069A	Sprocket - 7 tooth, 0.404 in. pitch	alternate
	36790A	Sprocket - 6 tooth, 9/16 in. pitch	alternate
	36791A	Sprocket - 7 tooth, 9/16 in. pitch	alternate
5	36019A	Shroud - Sprocket	1
6	100256	Key - Woodruff	1
7	55737	Spacer - Sprocket	1
8	102415	Screw - Pan hd 10-24 x 3/8	2
9	101194	Lockwasher	2
10	61224	Cover - Pushrod	1
11	61783	Kit - Spike	1
12	100882	. Screw - Hex hd 1/4-20 x 3/4	2
13	105394	. Nut - Hex 1/4-20	2
14	102128	Screw - Hex hd 1/4-20 x 1-1/4	3
15	36306	Plate - Lock	1
16	100004	Washer - 1/4	3
17	104535	"O" Ring	1
18	57736	Washer - Oiler rod felt	1
	60464	Transmission Assy 3-1	1
19	51631A	. Bolt - Bar mounting	2
20	104835	. Screw - Pan hd 10-24 x 1/2	4
21	60408	. Retainer - Bearing	1
22	60409	. Gasket - Retainer	1
23	104869	. Plug - Pipe 1/16-27	1
24	104218	. Plug - Pipe 3/8-18	1
25	103464	. Screw - Hex hd 10-24 x 3/4 (SEMS)	11
26	103947	. Screw - Hex hd 10-24 x 1 (SEMS)	3
27	58779	. Cover - Gearcase	1
28	68639	. Gasket - Gearcase cover	1
29	104298	. Seal - Oil	1
30	101039	. Bearing - Ball	1
31	104422	. Bearing - Ball	1
32	55715	. Spacer - Gear	1
33	60407	. Spacer - Gear	1
	60419	. Shaft and Sprocket Gear Assy	1
34	104451	. . Ring - Retaining	1
35	55925	. . Gear - Sprocket drive	1

Item No.	Part Number	Description	Units Per Assy
36	55953	. . Key - Sprocket gear	1
37	60470A	. . Shaft - Sprocket	1
	60461	. Gearcase Assy	1
38	103280	. . Screw - Hex hd 1/4-28 x 5/8	1
39	102901	. . Screw - Hex hd 1/4-28 x 1	1
40	30351884	. . Washer - 1/4	2
41	60186	. . Strap - Idler yoke	2
42	100993	. . Pin - Dowel	1
43	100010	. . Pin - Cotter	1
44	60389	. . Valve Assy - Check	1
45	100640	. Nut - Hex 1/4-28	2
46	100004	. Washer - 1/4	1
47	104351	. Screw - Hex hd 1/4-28 x 1-13/32	1
48	55539	. Lockplate - Yoke	1
49	55928A	. Gear and Yoke Assy	1
50	100201	. . Screw - Socket hd 1/4-28 x 1/2	1
51	100640	. . Locknut - Hex 1/4-28	1
52	57493	. . Hub - Bearing	1
53	53842	. . Yoke Assy	1
54	55924	. . Gear - Idler	1
55	100824	. . Bearing - Ball	1
56	51505	. Weight Assy	1
57	51506	. . Screen - Pickup	1
58	28007	. Hose - Pickup	1
59	51755	. Plug - Oiler valve	1
60	51944	. Spring	1
61	100549	. Ball - Steel 0.188 in. dia	1
	60622A	. Body Assy - Oiler	1
62	57721B	. . Body - Oiler	1
63	101056	. . "O" Ring	1
64	19236	. Spring - Oiler	1
	51472	. Piston Assy - Oiler	1
65	101056	. . "O" Ring	1
66	36126	. . Piston - Oiler	1
67	57129A	. Cap - Filler	1
68	101148	. "O" Ring	1
69	60914D	Pump and Gasket Assy - Oiler 3-1	1
70	110172	. Screw - Special	4
71	60409	. Gasket - Oiler pump	1
72	61398	. Screw - Special	1
73	60959	. Plug - Special	1
74	60964	. Shim - 0.015 in.	1
75	104791	. Plug - Expansion 5/8 in.	1
76	60958A	. Plunger - Oiler pump 3-1	1

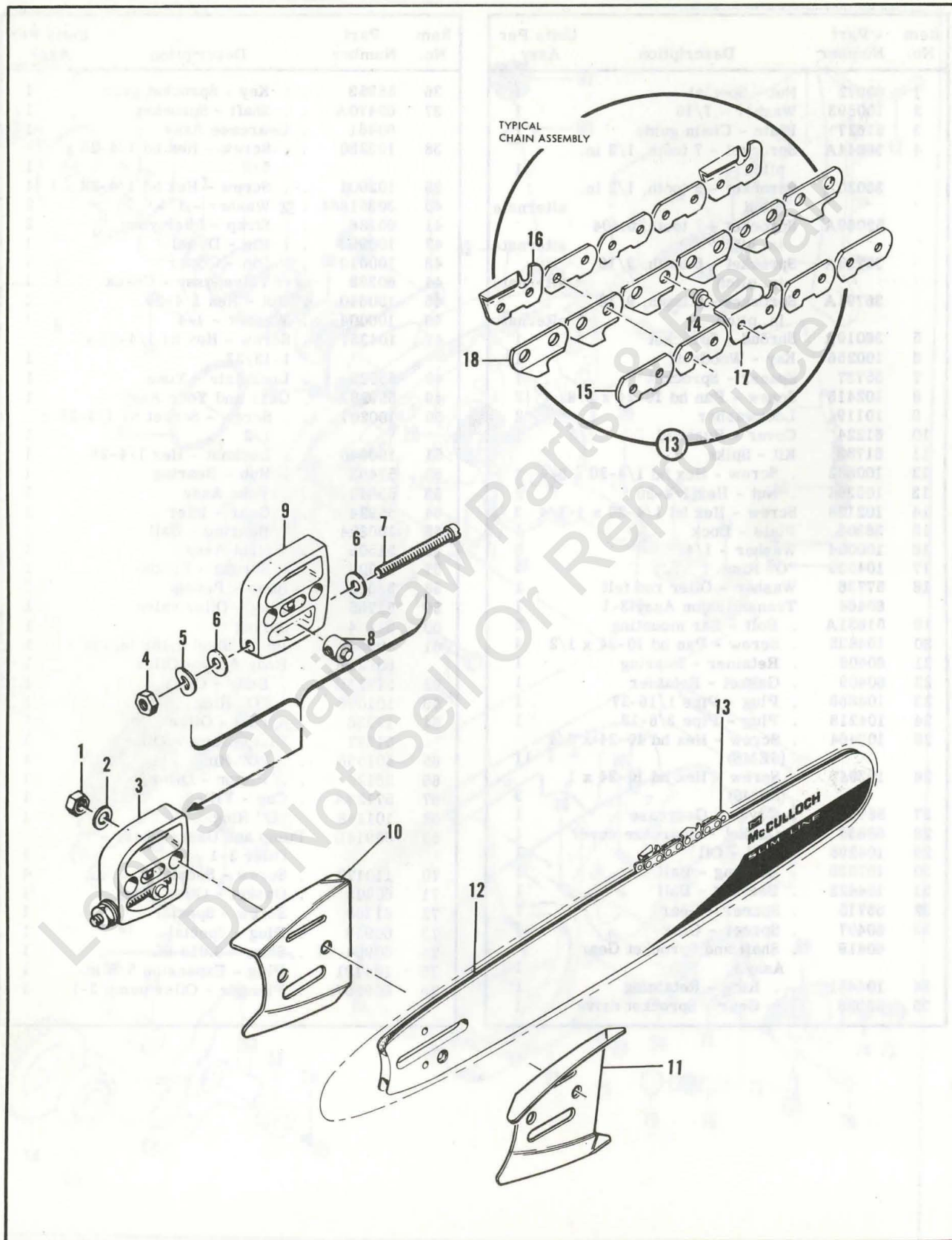


Figure 7. Lockplate Adjusting Assembly, Bar and Chain

FIGURE 7. LOCKPLATE ADJUSTING ASSEMBLY, BAR AND CHAIN

Item No.	Part Number	Description	Units Per Assy
1	103729	Nut - Hex 3/8-24	2
2	100393	Washer - 3/8	2
3	52211D	Lockplate Adjusting Assy	1
4	100640	. Nut - Hex 1/4-28	1
5	102813	. Washer - Spring	1
6	102843	. Washer - 1/4	2
7	103919	. Screw - Fil hd 1/4-20 x 2-1/2	1
8	52207C	. Nut - Adjusting	1
9	52206B	. Lockplate	1

Item No.	Part Number	Description	Units Per Assy
	61994	Set - Bar plates	1
10	61995	. Bar Plate - L.H.	1
11	61996	. Bar Plate - R.H.	1
12		Typical McCulloch Bar	1
13		Typical Chain Assy	1
14		. Shoulder Rivet	
15		. Side Link	
16		. Cutter - L.H.	
17		. Cutter - R.H.	
18		. Center Link	

Leon's Chainsaw Parts & Repair
Do Not Sell Or Reproduce

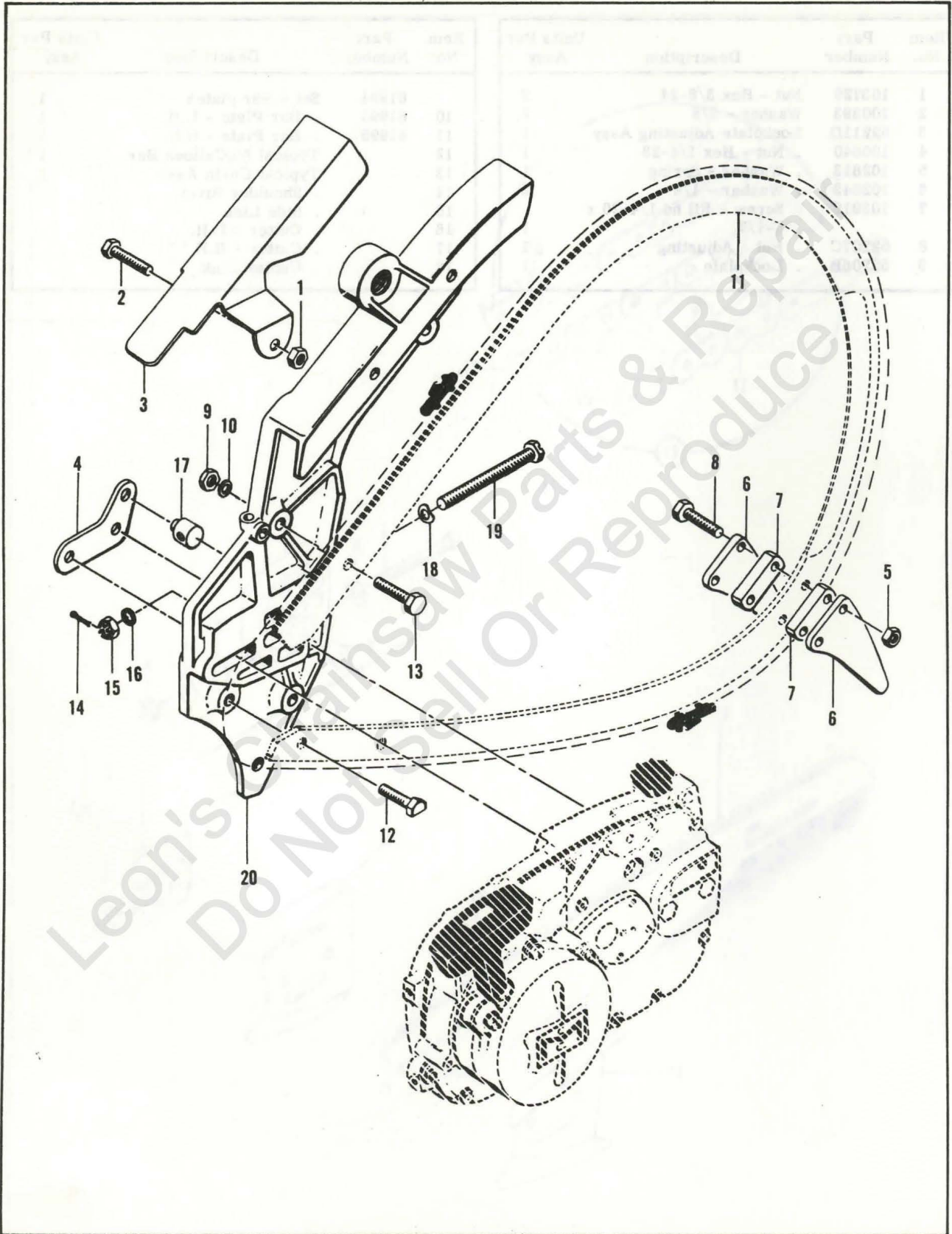


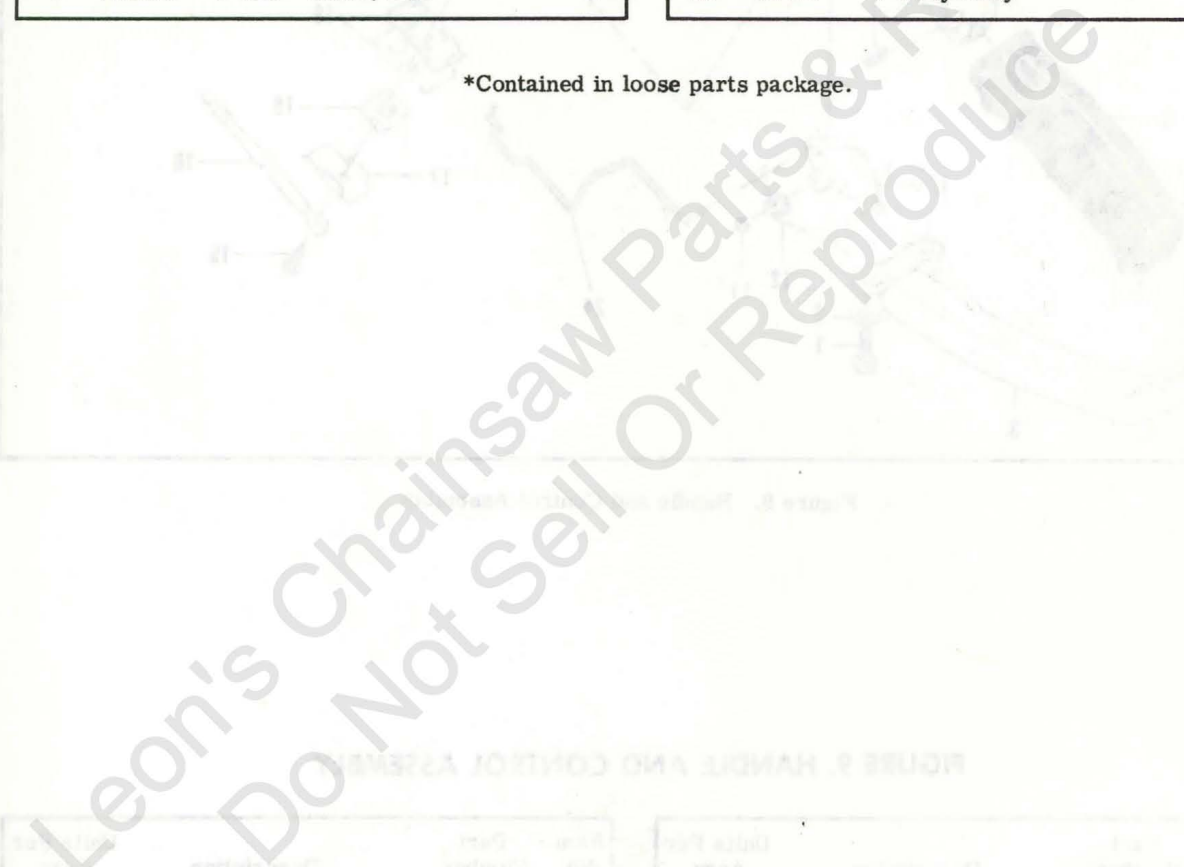
Figure 8. Plunge Bow Saw Assembly

FIGURE 8. PLUNGE BOW SAW ASSEMBLY

Item No.	Part Number	Description	Units Per Assy
	55152	Plunge Bow Saw Assy (less track)	1
1	*101143	. Nut - Hex 1/4-20	1
2	*102128	. Screw - Hex hd 1/4-20 x 1-1/4	1
3	*57494A	. Guard - Chain (bow saw)	1
4	*51674	. Plate - Adjusting	1
5	*101143	. Nut - Hex 1/4-20	2
6	*28256	. Spike	2
7	*28259A	. Spacer	2
8	*102130	. Bolt - Hex hd 1/4-20 x 1-1/2	2
9	*101143	. Nut - Hex 1/4-20	4

Item No.	Part Number	Description	Units Per Assy
10	*100004	. Washer - 1/4	4
11		. Track (available through dealers)	1
12	*51955	. Bolt - Special 1/4-20 x 1	1
13	*101982	. Bolt - Hex hd 1/4-20 x 1	3
14	101495	. Pin - Cotter 0.09 in. dia. x 1/2	1
15	102022	. Nut - Castle 5/16 -24	1
16	100007	. Washer - 5/16	1
17	19708	. Nut - Adjusting	1
18	24260	. Spring - Thrust	1
19	102193	. Screw - Adjusting	1
20	51672	. Body Assy	1

*Contained in loose parts package.



Item No.	Part Number	Description	Units Per Assy
1	100007	Washer - 1/4	4
2	100007	Washer - 1/4	4
3	100007	Washer - 1/4	4
4	100007	Washer - 1/4	4
5	100007	Washer - 1/4	4
6	100007	Washer - 1/4	4
7	100007	Washer - 1/4	4
8	100007	Washer - 1/4	4
9	100007	Washer - 1/4	4
10	100007	Washer - 1/4	4
11	100007	Washer - 1/4	4
12	100007	Washer - 1/4	4
13	100007	Washer - 1/4	4
14	100007	Washer - 1/4	4
15	100007	Washer - 1/4	4
16	100007	Washer - 1/4	4
17	100007	Washer - 1/4	4
18	100007	Washer - 1/4	4
19	100007	Washer - 1/4	4
20	100007	Washer - 1/4	4

Item No.	Part Number	Description	Units Per Assy
1	100007	Washer - 1/4	4
2	100007	Washer - 1/4	4
3	100007	Washer - 1/4	4
4	100007	Washer - 1/4	4
5	100007	Washer - 1/4	4
6	100007	Washer - 1/4	4
7	100007	Washer - 1/4	4
8	100007	Washer - 1/4	4
9	100007	Washer - 1/4	4
10	100007	Washer - 1/4	4
11	100007	Washer - 1/4	4
12	100007	Washer - 1/4	4
13	100007	Washer - 1/4	4
14	100007	Washer - 1/4	4
15	100007	Washer - 1/4	4
16	100007	Washer - 1/4	4
17	100007	Washer - 1/4	4
18	100007	Washer - 1/4	4
19	100007	Washer - 1/4	4
20	100007	Washer - 1/4	4

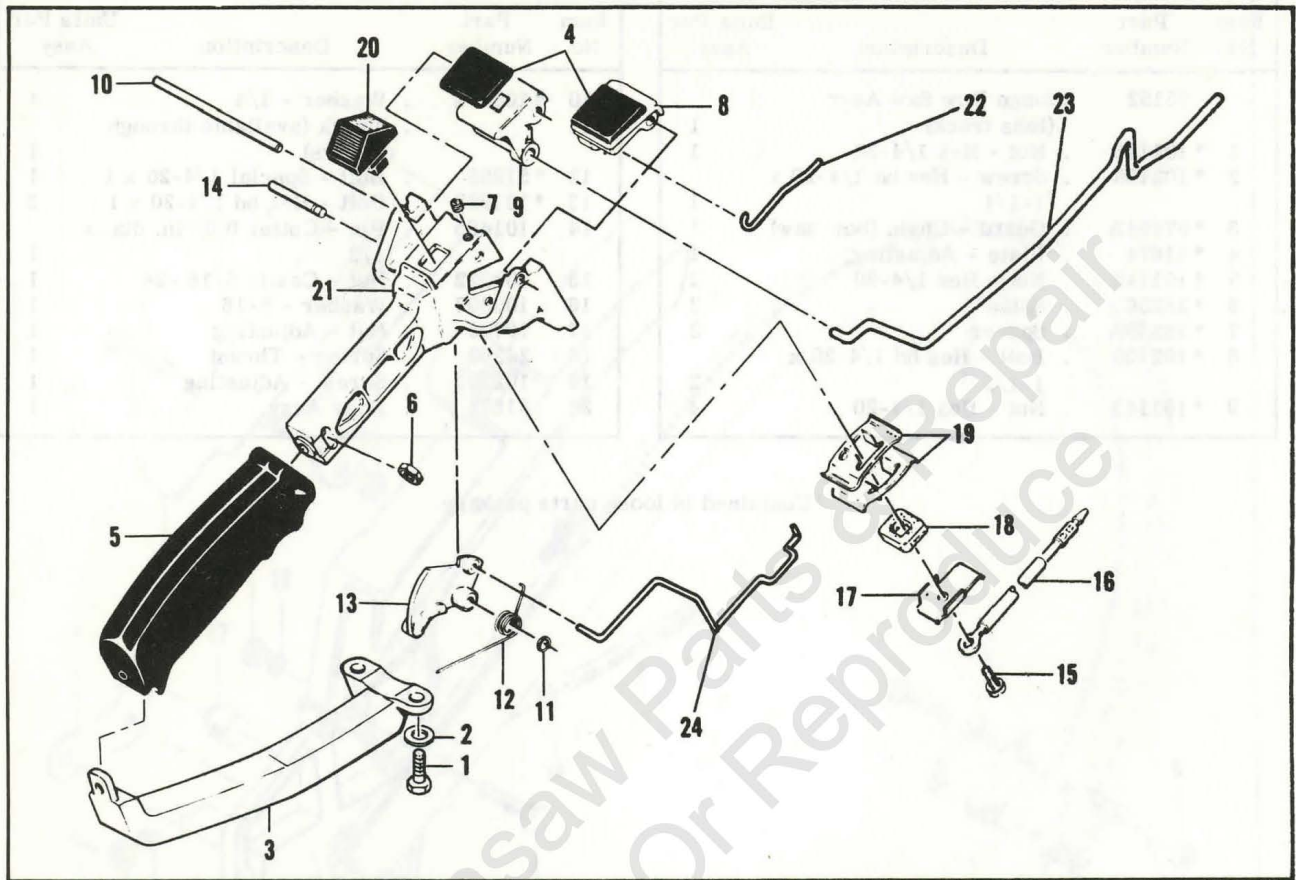


Figure 9. Handle and Control Assembly

FIGURE 9. HANDLE AND CONTROL ASSEMBLY

Item No.	Part Number	Description	Units Per Assy
1	102121	Screw - Hex hd 1/4-20 x 7/8	2
2	100005	Washer - 1/4	2
3	60744	Brace - Handle	1
4	55670	Grommet - Control button	2
5	55624A	. Grip - Handle	1
6	101326	. Nut - Hex 10-24	1
7	104484	. Screw - Set 8-32 x 1/4	1
8	55968A	. Button - Primer	1
9	55969A	. Button - Oiler	1
10	51344A	. Shaft - Oiler and primer	1
11	104501	. Retainer - Trigger pin	1
12	55674	. Spring - Trigger return	1

Item No.	Part Number	Description	Units Per Assy
13	63663	. Trigger	1
14	50507	. Pin - Trigger	1
15	103672	. Screw - 8-32 x 1/2 (SEMS)	1
16	63662	. Wire Assy - Stop switch	1
17	51279	. Contact - Switch	1
18	51555	. Insulator - Switch	1
19	51554A	. Detent - Switch	2
20	57718	. Button - Switch	1
21	55986	. Handle	1
22	53583A	Pushrod - Primer	1
23	57719	Pushrod - Oiler	1
24	63665	Pushrod - Throttle	1

TOOLS AND ACCESSORIES

Part Number	Description
51445A	Wrench and Screwdriver Combination
36248	Wrench - Spark plug
68120	Owner's Manual
53938	Piston Assy - 0.020 in. oversize
55125	Ring Set - 0.020 in. oversize

Part Number	Description
53939	Piston Assy - 0.030 in. oversize
55126	. Ring Set - 0.030 in. oversize
68127	Baffle - Spark arrester
60466	Pump Assy - Oiler (2:1 ratio)
60633	Transmission Assy (2:1 ratio)

Leon's Chainsaw Parts & Repair
Do Not Sell Or Reproduce



McCULLOCH



● MANUFACTURING ●

SALES ●

● SERVICE ●

McCULLOCH CORPORATION

6101 WEST CENTURY BLVD., LOS ANGELES, CALIFORNIA 90045

INTERNATIONAL DIVISIONS:

LOS ANGELES, CALIF., P. O. BOX 45466

HONG KONG, B. C. C.: G. P. O. BOX 879

McCULLOCH OF CANADA LTD.

77 BELFIELD ROAD, REXDALE, ONTARIO, CANADA

McCULLOCH OF EUROPE, N. V.

ANTOON SPINOYSTRAAT 5, MECHELEN, BELGIUM

McCULLOCH OF AUSTRALIA PTY., LTD.

P. O. BOX 165, SOUTH GRANVILLE, N. S. W., AUSTRALIA

ROUTE HANDLE AND CONTROL ASSEMBLY

Part No.	Description	QTY
102101	Drive pulley 1 1/2-3/4 x 3/8	1
102102	Washer - 3/8	1
102103	Washer - 3/8	1
102104	Washer - 3/8	1
102105	Washer - 3/8	1
102106	Washer - 3/8	1
102107	Washer - 3/8	1
102108	Washer - 3/8	1
102109	Washer - 3/8	1
102110	Washer - 3/8	1
102111	Washer - 3/8	1
102112	Washer - 3/8	1
102113	Washer - 3/8	1
102114	Washer - 3/8	1
102115	Washer - 3/8	1
102116	Washer - 3/8	1
102117	Washer - 3/8	1
102118	Washer - 3/8	1
102119	Washer - 3/8	1
102120	Washer - 3/8	1

Part No.	Description	QTY
102121	Washer - 3/8	1
102122	Washer - 3/8	1
102123	Washer - 3/8	1
102124	Washer - 3/8	1
102125	Washer - 3/8	1
102126	Washer - 3/8	1
102127	Washer - 3/8	1
102128	Washer - 3/8	1
102129	Washer - 3/8	1
102130	Washer - 3/8	1
102131	Washer - 3/8	1
102132	Washer - 3/8	1
102133	Washer - 3/8	1
102134	Washer - 3/8	1
102135	Washer - 3/8	1
102136	Washer - 3/8	1
102137	Washer - 3/8	1
102138	Washer - 3/8	1
102139	Washer - 3/8	1
102140	Washer - 3/8	1