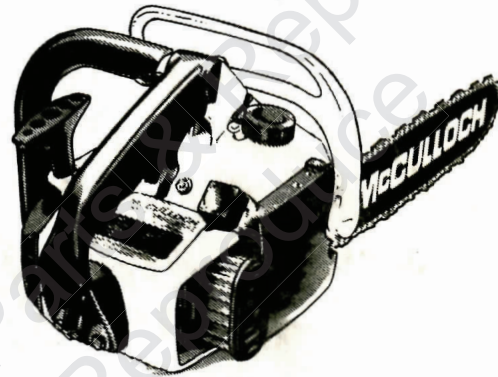


ILLUSTRATED PARTS LIST

MODELS	SERIAL NUMBER PREFIX	MODELS	SERIAL NUMBER PREFIX
600097E	11-	600097K	11-
600097F	11-	600097U	11-
600097G	11-	600097B	11-

Mini-Mac 35AS Chain Saw



McC Model Chain Saws are identified by a model number (000000) followed by a suffix letter (A, B, C, etc.) stamped on the identification plate attached to the saw. Suffix letters denote variations in parts or assemblies in the manufacture of the saw.

Part numbers listed in this IPL which have a suffix letter or letters following the description, indicate the part is used only on the model(s) identified by the letter or letters.

Part numbers and descriptions without suffix letter or letters apply to all models of the McC model chain saw.

Part numbers which have one or more dots (.) preceding their description may be ordered individually but they are also included in the kit or assembly whose description begins directly above the dot(s).

Part numbers which have changed since the previous printing of the IPL covering these saws, are indicated by a dash (-) preceding the new part number.

The policy of McCulloch Corporation is one of continual improvement in design, manufacturing and engineering advancement wherever possible to assure still finer two-cycle power tools. Hence, specifications, equipment, colors, design and manufacturer's suggested list prices are subject to change without notice and McCulloch Corporation reserves the right to make such changes without prior notification or obligation to backfit or supply backfit components for units previously shipped from the factory.

JANUARY 1977

- CONTENTS -

	<u>Page</u>
Figure 1. General	2
Figure 2. CHAIN BRAKE Assembly	4
Figure 3. Carburetor Assembly	4
Figure 4. Powerhead Assembly	6
Accessories	3
Specifications	7



Mini-Mac 35AS

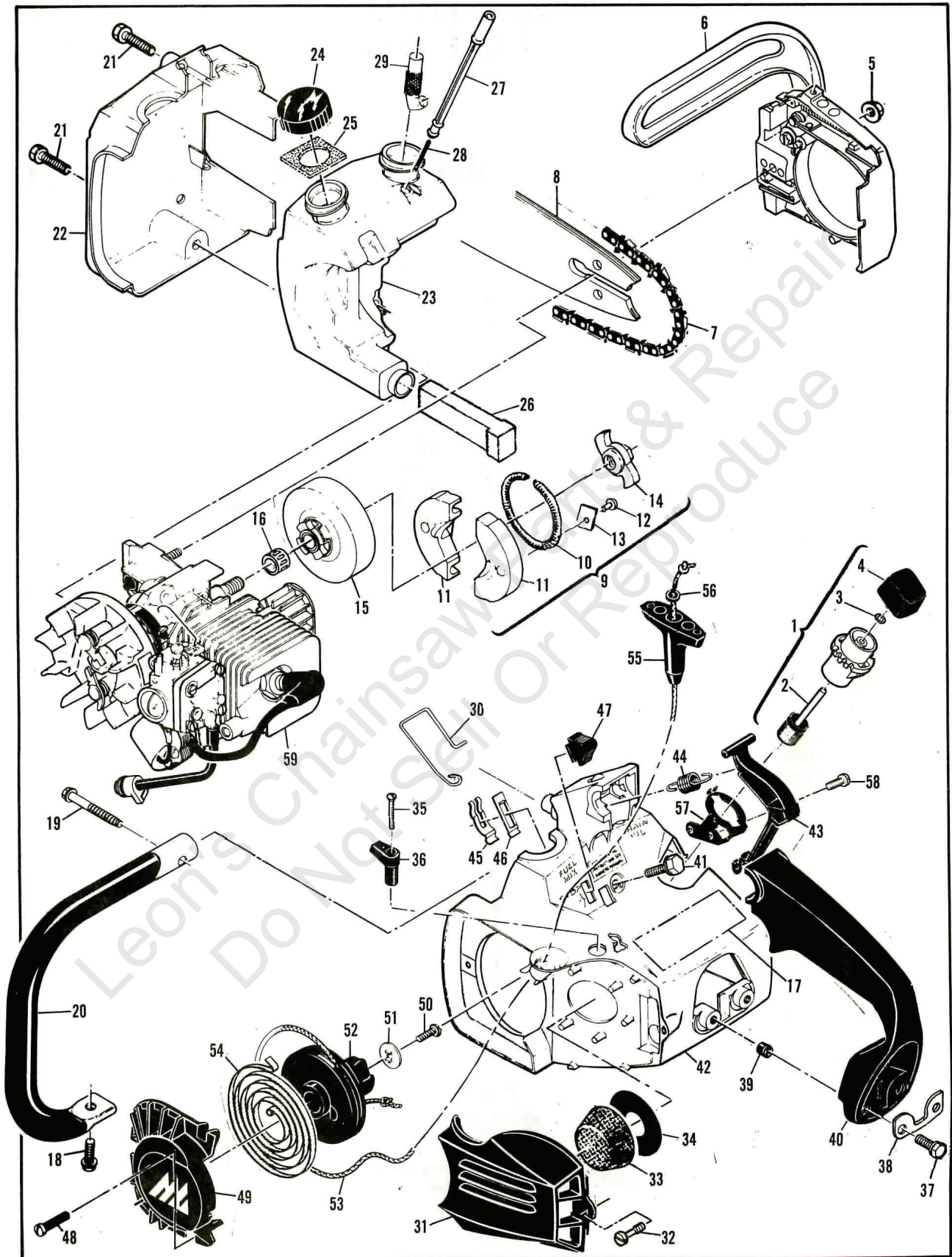


Figure 1. General

Mini-Mac 35AS

Figure 1. General

Item No.	Part Number	Description	Units Per Asy
1	92588	Grinder Asy - AUTO SHARP	1
2	92587	. Wheel Asy - Grinding	1
3	110968	. . Ring - Retaining	1
4	92582	. Knob	1
5	110676	Nut - Hx 1/4-28	1
6		CHAIN BRAKE Asy (Fig 2)	
7	92600N	Chain - AS 370G	1
8	90550	Bar - 14" Mini Pro	1
9	92743	Clutch Assembly	1
10	69358	. Spring - Clutch	1
11	91050	. Shoe - Clutch	2
12	110709	. Rivet	2
13	85064	. Plate	2
14	92721	. Spider	1
15	90150A	Drum/Spkt/Brg Asy - .375P	1
16	91222	. Bearing	1
17	92671	Plate - Name	1
18	110953	Screw - Hx hd 12-24 x 5/8	1
19	110686	Screw - Hx hd 13-16 x 2	1
20	84791	Frame & Grip Asy	1
21	110639	Screw - Hx hd 12-24 x 1	2
22	88591	Cover - Fuel & Oil tank	1
23	91454A	Kit - Fuel & Oil tank	1
24	91283	. Cap - Fuel & Oil	2
25	91148	. Seal - Fuel vent	1
26	84956	. Pickup - Fuel	1
27	83900A	. Piston - Manual oiler	1
28	83946	. Spring - Piston	1
29	85557	. Body - Oiler	1

Item No.	Part Number	Description	Units Per Asy
30	84611	Rod - Manual oiler	1
31	91853	Cover - Air cleaner	1
32	91796	Screw - Air cleaner	1
33	85127	Filter - Air	1
34	84918	Washer - Air seal	1
35	110672	Screw - Oval hd 4-40 x 1	1
36	83870	Knob - Choke	1
37	110953	Screw - Hx hd 12-24 x 5/8	2
38	84520A	Plate - Washer	1
39	84519	Sleeve - Handle	2
40	83852A	Handle	1
41	110953	Screw - Hx hd 12-24 x 5/8	3
42	92589	Shroud	1
43	83878	Trigger	1
44	83940	Spring - Trigger	1
45	83935	Contact - Switch	1
46	83936	Protector - Switch	1
47	83934	Button - Switch	1
48	110959	Screw - Hx hd 8-32 x 1/2	3
49	90425	Cover - Starter	1
50	110706	Screw - Pan hd 8-18 x 1/2	1
51	68497	Washer - Special	1
52	92316	Drum/Rope Asy	1
53	83203	. Rope - Starter	1
54	83078	Spring - Rewind	1
55	91255	Kit - Starter handle	1
56	105490	. Washer	1
57	92581	Bracket - AUTO SHARP	1
58	110597	Screw - Pan hd 8-32 x 1/2 (SEMS)	2
59		Powerhead Asy - (Fig 4)	

Accessories

Part Number	Description
91753	Case - Carrying
88756	Scrench
83687	Guide - Timing
90256	Kit - Tune Up
68915A	Kit - Piston Tool

Part Number	Description
84992	Kit - Reed Muffler
85933	Kit - Spark Arrester Screen (Reed Muffler)
85924	Kit - Spark Arrester (PM6 Type)
89685	Screen - Spark Arrester

Mini-Mac 35AS

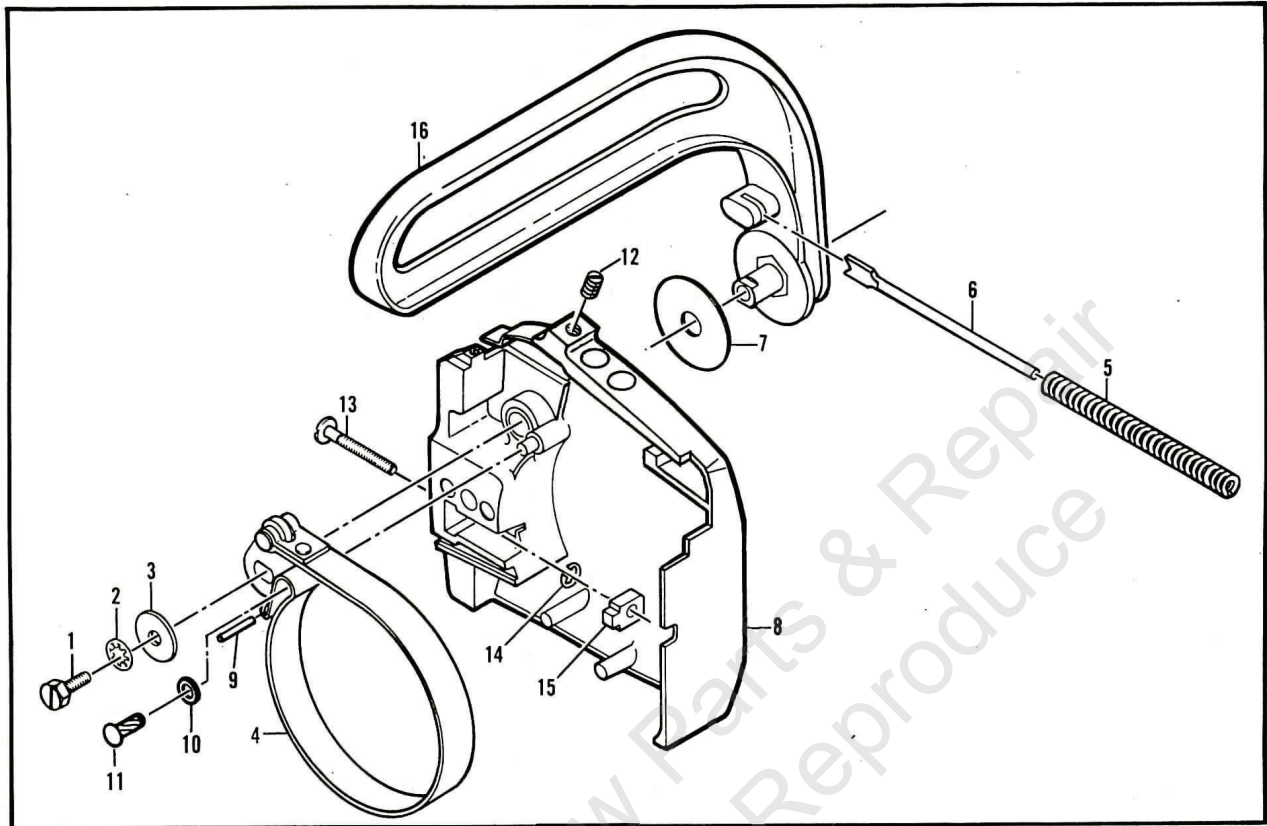


Figure 2. CHAIN BRAKE Assembly

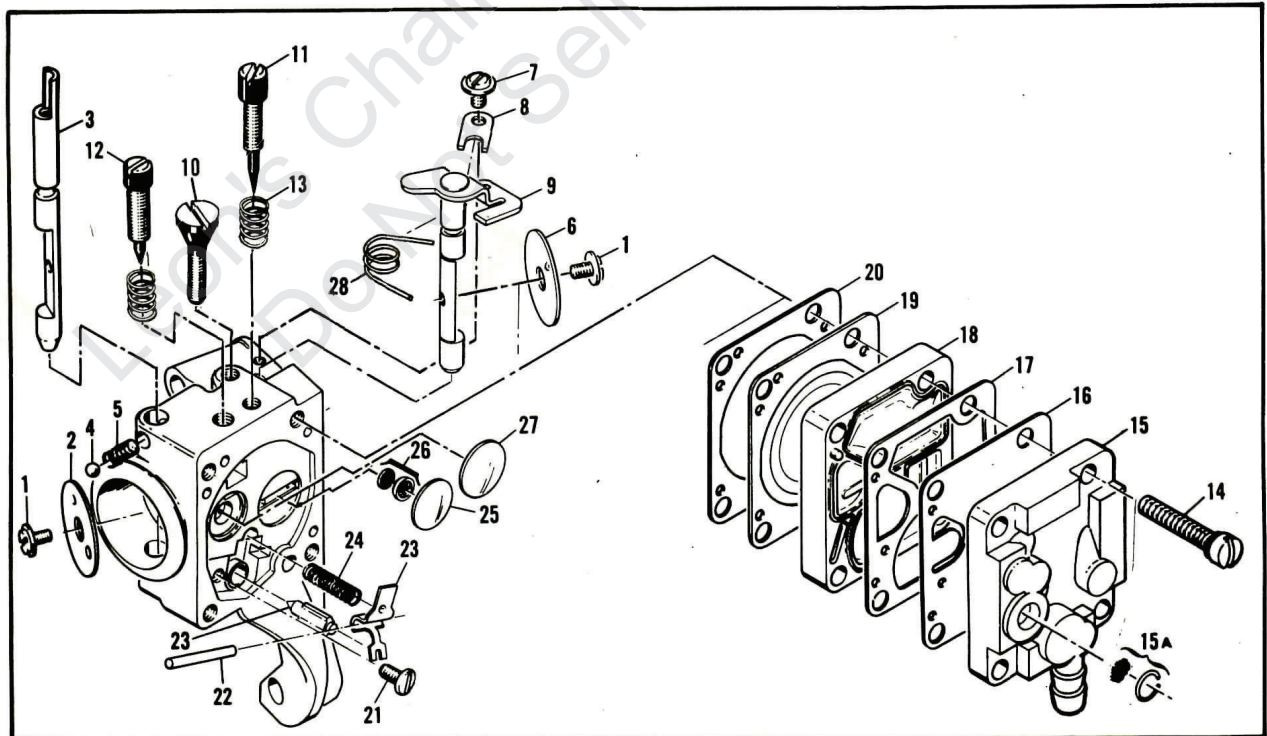


Figure 3. Carburetor Assembly

Figure 2. CHAIN BRAKE Assembly

Item No.	Part Number	Description	Units Per Asy
	92594	CHAIN BRAKE Asy	
1	102762	. Screw - Hx hd 10-24 x 1/2	1
2	101194	. Washer - Lock #10	1
3	110712	. Washer	1
4	90580	. Band & Lever	1
5	90587A	. Spring - Brake Actuator	1
6	90588	. Guide - Spring	1
7	90967	. Washer - Actuating Lever	1

Item No.	Part Number	Description	Units Per Asy
8	92592	Kit - Housing/Spring	1
9	103047	. . Pin	1
10	100001	. . Washer	1
11	110946	. . Screw Drive - 6 x 5/16	1
12	110955	. . Screw - Set 8-32 x 1/2	1
13	90658	. Screw - Adjusting	1
14	110907	. Ring - Retaining	1
15	84929	. Nut - Bar adjusting	1
16	90576	. Lever - Actuator	1

Figure 3. Carburetor Assembly

Item No.	Part Number	Description	Units Per Asy
	90918	Carburetor Asy	1
1	*83755	. Screw - Plate	2
2	68556	. Plate - Choke	1
3	85033	. Shaft - Choke	1
4	*100302	. Ball - Choke friction	1
5	*67504	. Spring - Choke friction	1
6	68553	. Plate - Throttle	1
7	70798	. Screw - Clip	1
8	68554	. Clip - Throttle shaft	1
9	90471	. Shaft Asy - Throttle	1
10	*68566	. Screw - Idle speed	1
11	*86446	. Needle - Idle	1
12	*86447	. Needle - High speed	1
13	*67502	. Spring - Needle	2
14	*68564	. Screw Asy - Body	4
15	91347	. Cover Asy - Pump	1
15A	85629	. . Kit - Vent screen	1

Item No.	Part Number	Description	Units Per Asy
16	*68563	. Diaphragm - Fuel pump	1
17	*85035	. Gasket - Pump diaphragm	1
18	85030	. Body - Fuel pump	1
19	*85036	. Diaphragm - Metering	1
20	*85034	. Gasket - Diaphragm	1
21	*67500	. Screw - Lever pin	1
22	*67508	. Pin - Lever	1
23	85059	. Kit - Needle & lever	1
24	*68567	. Spring - Lever	1
25	*68559	. Plug - Welsh 7/16	1
26	*83758	. Kit - Check valve	1
27	*68560	. Plug - Welsh 1/2	1
28	89785	. Spring - Throttle return	1
29	86463	Repair Kit	

*Included in Repair Kit, P/N 86463

Mini-Mac 35AS

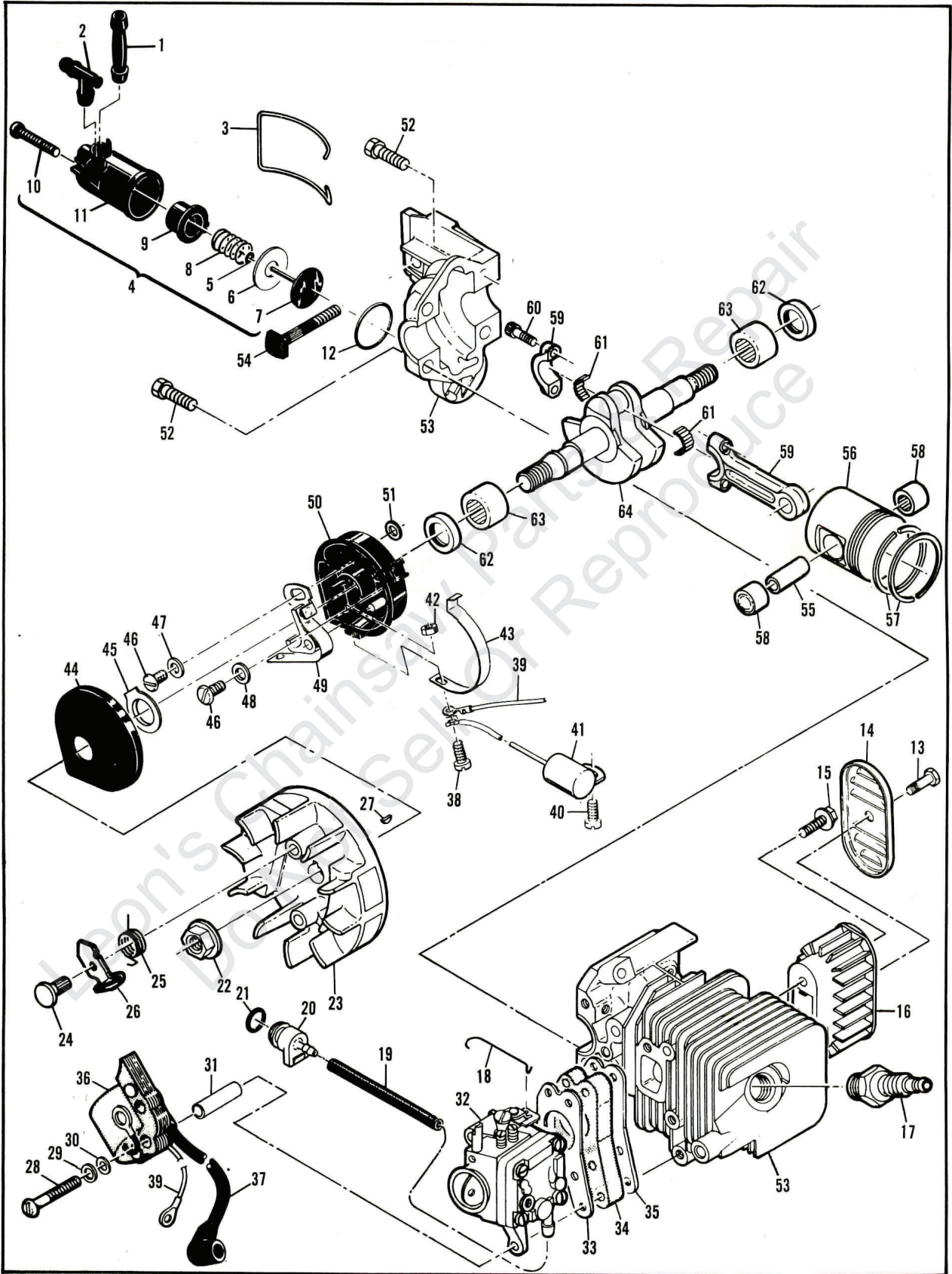


Figure 4. Powerhead Assembly

Figure 4. Powerhead Assembly

Item No.	Part Number	Description	Units Per Asy	Item No.	Part Number	Description	Units Per Asy
1	83898	Connector - Outlet	1	34	90713	Insulator - Carburetor	1
2	84613	Connector - Pump	1	35	90714	Gasket - Insulator	1
3	83896	Bail - Mounting	1	36	84957	Coil & Lamination Asy	1
4	83886	Pump Asy - Pulse	1	37	50120	. Wire Asy - Spark plug	1
5	105603	. "O" Ring	1	38	110364	Screw - Pan hd 6-32 x 5/8	1
6	85769	. Ring - Pump Piston	1	39	69344	Wire Asy - Primary	1
7	92204	. Piston Asy - Pump	1	40	110041	Screw - Pan hd 8-32 x 1/2 s/t	1
8	83891	. Spring - Pump	1	41	85358	Condenser	1
9	83890	. Sleeve - Pump	1	42	100035	Nut - Hx 6-32	1
10	110651	. Screw - Adjustment	1	43	84502	Connector - Stop switch	1
11	83887	. Body Asy - Pump	1	44	67841	Cover - Breaker box	1
12	110653	"O" Ring	1	45	69323	Seal - Breaker box	1
13	110674	Screw - Hx hd 10-24 x 1/2	1	46	110969	Screw - Hx hd 8-32 x 1/2	2
14	89684	Cover - Muffler	1	47	69322	Washer - Special	1
15	110928	Screw - Hx hd 10-24 x 1/2	2	48	105976	Washer - #8	1
16	89682	Body - Muffler	1	49	88811	Breaker Asy	1
17	63097	Spark Plug	1	50	84505A	Kit - Breaker Box	1
18	89274	Rod - Throttle	1	51	92037	. Washer	1
19	89059	Hose - Fuel	1	52	110639	Screw - Hx hd 12-24 x 1	4
20	90660	Adapter	1	53	90665B	Cyl/C'Case Asy	1
21	110908	"O" Ring	1	54	83856	. Bolt - Bar mounting	1
22*	110970	Nut - Hx 5/16-24	1	55	66867	Pin - Piston	1
23	91961	Flywheel & Pawl Asy	1	56	68098	Piston Asy	1
24	68796	. Pin - Pawl	2	57	87165	. Ring Set - Piston	1
25	92898	. Spring - Pawl	2	58	110538	. Bearing - Needle	2
26	91872	. Pawl - Starter	2	59	68097	Connecting Rod Asy	1
27	102164	Key - Woodruff	1	60	66853	. Screw - Special	2
28	110586	Screw - Pan hd 8-32 x 1-3/4	3	61	68095	. Roller - Needle (Set of 20)	1
29	105976	Washer - #8	3	62	83859	Seal - Oil	2
30	67177	Washer - Insulator	3	63	66854	Bearing - Needle	2
31	68198	Tube - Insulator	3	64	91932	Crankshaft	1
32		Carburetor Asy (Fig 3)					
33	68197	Gasket - Carburetor	1				

* Flywheel nut torque should be 190 to 200 pound x inches (21.5 to 22.6 N.m.) for Nut, P/N 110970.

Service Specifications

Displacement	2.0 cu. in. (32 cc)
Clutch Engaging Speed	2800 R.P.M.
Breaker Point Gap	.018" (.457 mm)
Timing	26° B.T.D.C.
Spark Plug Gap	.025" (.635 mm)

McCULLOCH
CORPORATION



● MANUFACTURING ● SALES ● SERVICE ●

McCULLOCH
CORPORATION

900 Lake Havasu Ave.
Lake Havasu City, AZ 86403-2891

**FOR SERVICE-RELATED PROBLEMS,
REPAIR OR MAINTENANCE
TAKE YOUR UNIT TO THE NEAREST
AUTHORIZED McCULLOCH SERVICING
DEALER LISTED UNDER SAWS IN YOUR
TELEPHONE DIRECTORY YELLOW PAGES.**

If additional assistance is required, call this toll-free hot-line:
(800) 423-6302

Arizona residents call collect (602) 453-3681