

ILLUSTRATED PARTS LIST

MODELS	SERIAL NUMBER PREFIX	MODELS	SERIAL NUMBER PREFIX
600091B	13-, 14-	600091G	13-
600091C	13-	600091U	11-,13-,14-

MINI-MAC 35 Chain Saw



Mini-Mac 35 chain saws are identified by a model number (600091) followed by a suffix letter (B, C, G or U) stamped on the identification plate attached to the saw. Suffix letters denote variations in parts or assemblies in the manufacture of the saw.

Part numbers listed in this IPL which have a suffix letter or letters following the description, indicate the part is used only on the model(s) identified by the letter or letters.

Part numbers and descriptions without suffix letter or letters apply to all models of the Mini-Mac 35 chain saw.

Part numbers which have one or more dots (.) preceding their description may be ordered individually but they are also included in the kit or assembly whose description begins directly above the dot(s).

Part numbers which have changed since the previous printing of the IPL covering these saws, are indicated by a dash (-) preceding the new part number.

The policy of McCulloch Corporation is one of continual improvement in design, manufacturing and engineering advancement wherever possible to assure still finer two-cycle power tools. Hence, specifications, equipment, colors, design and manufacturer's suggested list prices are subject to change without notice and McCulloch Corporation reserves the right to make such changes without prior notification or obligation to backfit or supply backfit components for units previously shipped from the factory.

March 1977

- CONTENTS -

	Page
Figure 1. General	2
Figure 2. CHAIN BRAKE Assembly ...	4
Figure 3. Carburetor Assembly	4
Figure 4. Powerhead Assembly	6
Accessories	5
Service Specifications	7



McCULLOCH

92327-R1

Mini-Mac 35

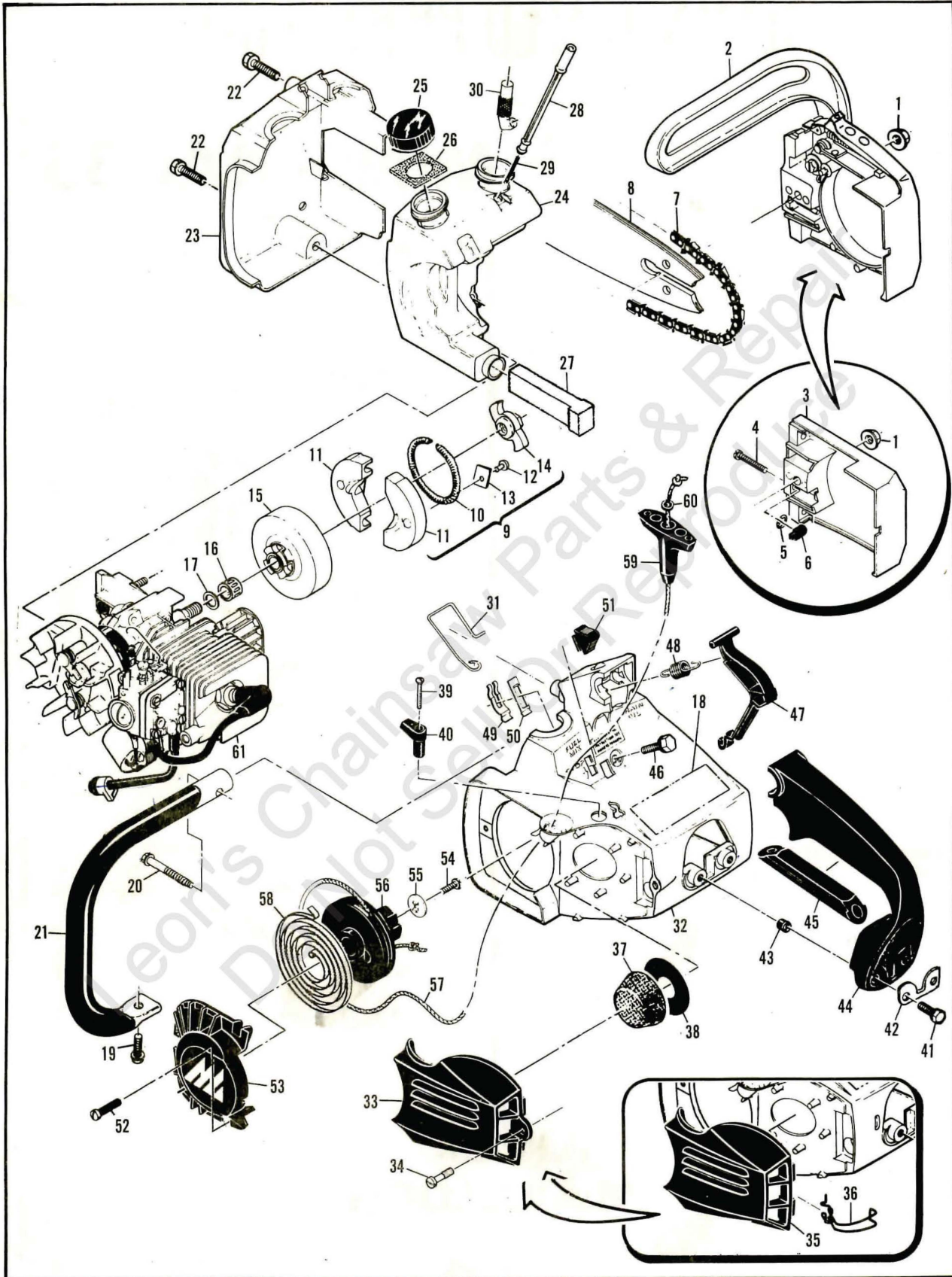


Figure 1. General

Figure 1. General

Item No.	Part Number	Description	Units Per Assy
1	110676	Nut-Hx 1/4-28	1
2		① CHAIN BRAKE Assy (Fig 2)	
3	90636	② Guard Assy-Clutch	1
4	90658	② . Screw-Pan hd 8-32 x 1-1/8	1
5	110907	② . Ring-Retaining	1
6	84929	② . Nut-Bar adjusting	1
7		Chain Assy (See Accessories)	1
8		Bar (See Accessories)	1
9	-92727	③ Clutch Assy	1
10	69358	③ . Spring-Clutch	1
11	85202	③ . Kit-Clutch Shoe	2
12	-110957	③ . . Rivet	2
13	85064	③ . . Plate	2
14	-92721	③ . Spider	1
(9)	85450	④ Clutch Assy	1
(10)	69358	④ . Spring-Clutch	1
(11)	85202	④ . Kit-Clutch Shoe	2
(12)	110709	④ . Rivet	2
(13)	85064	④ . Plate	2
(14)	85449	④ . Spider	1
15	90150	⑤ Drum/Sprocket/Bearing Assy	1
16	91222	⑤ . Kit-Needle Bearing	1
(15)	85504	⑥ Drum & Sprocket Assy (B)	1
(16)	67650	⑥ Bearing-Sprocket (B)	1
17	67303	⑥ Washer-Sprocket (B)	1
18	-91695	Plate-Name	1
19	-110953	Screw-Hx hd 12-24 x 5/8	1
20	110686	Screw-Hx hd 13-16 x 2	1
21	84791	Frame & Grip Assy	1
22	110639	Screw-Hx hd 12-24 x 1	2
23	88591	Cover-Fuel & Oil tank	1
24	-91454A	Kit-Fuel & Oil tank	1
25	91283	⑦ . Cap-Fuel & Oil (Unvented)	2
(25)	90922	⑧ . Cap-Fuel & Oil (Vented)	2

Item No.	Part Number	Description	Units Per Assy
26	91148	. Seal-Fuel vent	1
27	84956	. Pickup-Fuel	1
28	-83900A	. Piston-Manual oiler	1
29	83946	. Spring-Piston	1
30	85557	. Body-Oiler	1
31	84611	Rod-Manual oiler	1
32	-91859	Kit-Shroud Assy	1
33	-91853	③ . Cover-Air cleaner	1
34	-91796	③ . Screw-Air cleaner	1
35	90383	④ Cover-Air cleaner	1
36	83882	④ Retainer-Cover	1
37	85127	Filter-Air	1
38	84918	Washer-Air seal	1
39	110672	Screw-Oval hd 4-40 x 1	1
40	83870	Knob-Choke	1
41	-110953	Screw-Hx hd 12-24 x 5/8	2
42	-84520A	Plate-Washer	1
43	84519	Sleeve-Handle	2
44	-83852A	Handle	1
45	64872	④ Grip-Handle	1
46	-110953	Screw-Hx hd 12-24 x 5/8	3
47	83878	Trigger	1
48	83940	Spring-Trigger	1
49	83935	Contact-Switch	1
50	83936	Protector-Switch	1
51	83934	Button-Switch	1
52	-110959	Screw-Hx hd 8-32 x 1/2	3
53	90425	Cover-Starter	1
54	-110706	Screw-Pan hd 8-18 x 1/2	1
55	68497	Washer-Special	1
56	83876	④ Drum-Starter	1
(56)	-92316A	③ Drum/Rope Assy	1
57	83203	. Rope-Starter	1
58	83078	Spring-Rewind	1
59	91255	Kit-Starter handle	1
60	105490	. Washer	1
61		Powerhead Assy (Fig 4)	

- ① Used on models with serial number prefix 14-; also some 13-.
- ② Used on models with serial number prefix 11-; also some 13-.
- ③ Used on models with serial number prefix 14-.
- ④ Used on models with serial number prefix 11-, 13-.
- ⑤ Used on models with serial number prefix 11-, 14-; also 13- with model number suffix letter C, G, U.
- ⑥ Used on models with serial number prefix 13-.
- ⑦ Used on models with serial number prefix 13-, 14-.
- ⑧ Used on models with serial number prefix 11-. Not included in Fuel and Oil Tank Kit, P/N 91454A.

Mini-Mac 35

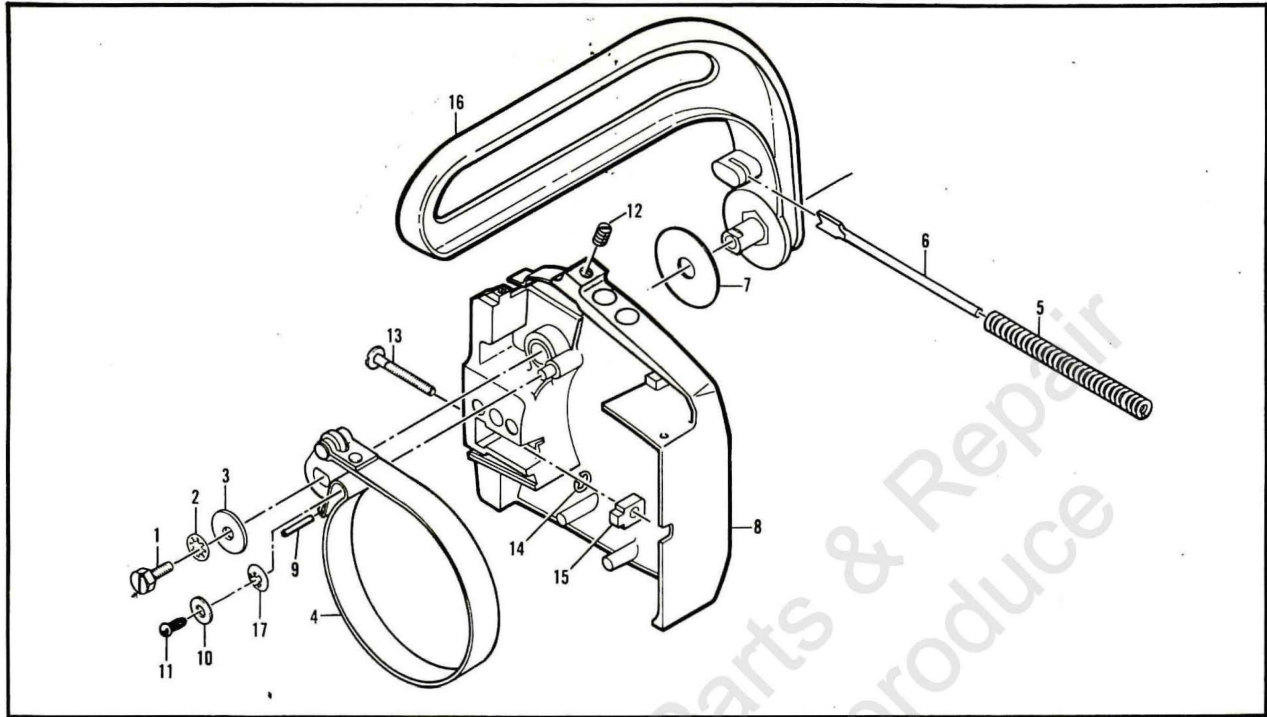


Figure 2. CHAIN BRAKE Assembly

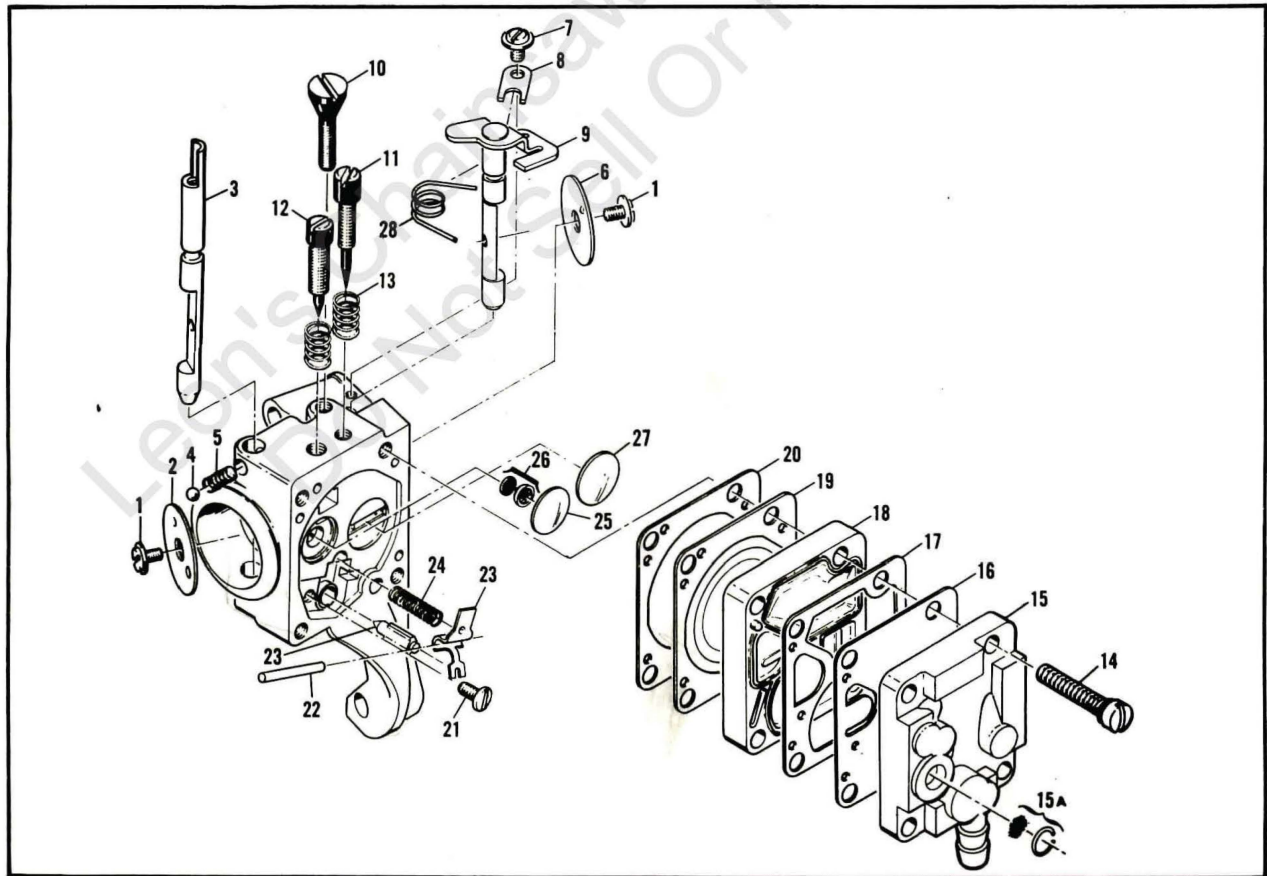


Figure 3. Carburetor Assembly

Figure 2. CHAINBRAKE Assembly

Item No.	Part Number	Description	Units Per Asy
	- 90570B	CHAIN BRAKE Asy	
1	102762	. Screw-Hx hd 10-24 x 1/2	1
2	101194	. Washer-Lock #10	1
3	110712	. Washer	1
4	90580	. Band & Lever	1
5	90587A	. Spring-Brake Actuator	1
6	90588	. Guide-Spring	1
7	90967	. Washer-Actuating Lever	1

Item No.	Part Number	Description	Units Per Asy
8	90571C	. Kit-Housing/Spring	1
9	103047 ①	. Pin	1
10	100001 ①	. Washer	1
11	110946 ①	. Screw Drive-6 x 5/16	1
12	-110955 ①	. Screw-Set 8-32 x 1/2	1
13	90658	. Screw-Adjusting	1
14	110907	. Ring-Retaining	1
15	84929	. Nut-Bar adjusting	1
16	90576A	. Lever-Actuator	1
17	110913 ②	Fastener-Springtip	1

- ① Used on models with serial number prefix 14-.
- ② Used on models with serial number prefix 13-.

Accessories

Part Number	Description
90550 ①	Bar-14" Mini Pro
90643N ①	Chain-MP370G
90771 ②	Bar-14" Mac 6 (B)
88034N ②	Chain-SM 250 (B)
90632 ③	Bar-14" Mini Mac (C,G,U)
90640N ③	Chain-MM370G (C,G,U)
-91753	Case-Carrying
88756	Scrench

Part Number	Description
83687	Guide-Timing
90256	Kit-Tune Up
-68915A	Kit-Piston Tool
84992	Kit-Reed Muffler
85933	Kit-Spark Arrester Screen (Reed muffler)
85924	Kit-Spark Arrester (PM6 type)
89685	Screen-Spark arrester

- ① Used on models with serial number prefix 14-.
- ② Used on models with serial number prefix 13-.
- ③ Used on models with serial number prefix 11-, 13-.

Figure 3. Carburetor Assembly

Item No.	Part Number	Description	Units Per Asy
	90918	Carburetor Asy (MDC 11)	1
1	*83755	. Screw-Plate	2
2	68556	. Plate-Choke	1
3	85033	. Shaft-Choke	1
4	*100302	. Ball-Choke friction	1
5	*67504	. Spring-Choke friction	1
6	68553	. Plate-Throttle	1
7	70798	. Screw-Clip	1
8	68554	. Clip-Throttle shaft	1
9	90471	. Shaft Asy-Throttle	1
10	*68566	. Screw-Idle speed	1
11	*86446	. Needle-Idle	1
12	*86447	. Needle-High speed	1
13	*67502	. Spring-Needle	2
14	*68564	. Screw Asy-Body	4
15	91347	. Cover Asy-Pump	1
15A	85629	. . Kit-Vent screen	1

Item No.	Part Number	Description	Units Per Asy
16	*68563	. Diaphragm-Fuel pump	1
17	*85035	. Gasket-Pump diaphragm	1
18	85030	. Body-Fuel pump	1
19	*85036	. Diaphragm-Metering	1
20	*85034	. Gasket-Diaphragm	1
21	*67500	. Screw-Lever pin	1
22	*67508	. Pin-Lever	1
23	85059	. Kit-Needle & lever	1
24	*68567	. Spring-Lever	1
25	*68559	. Plug-Welsh 7/16	1
26	*83758	. Kit-Check valve	1
27	*68560	. Plug-Welsh 1/2	1
28	89785	. Spring-Throttle return	1
	86463	Repair Kit	

*Included in Repair Kit, P/N 86463.

Mini-Mac 35

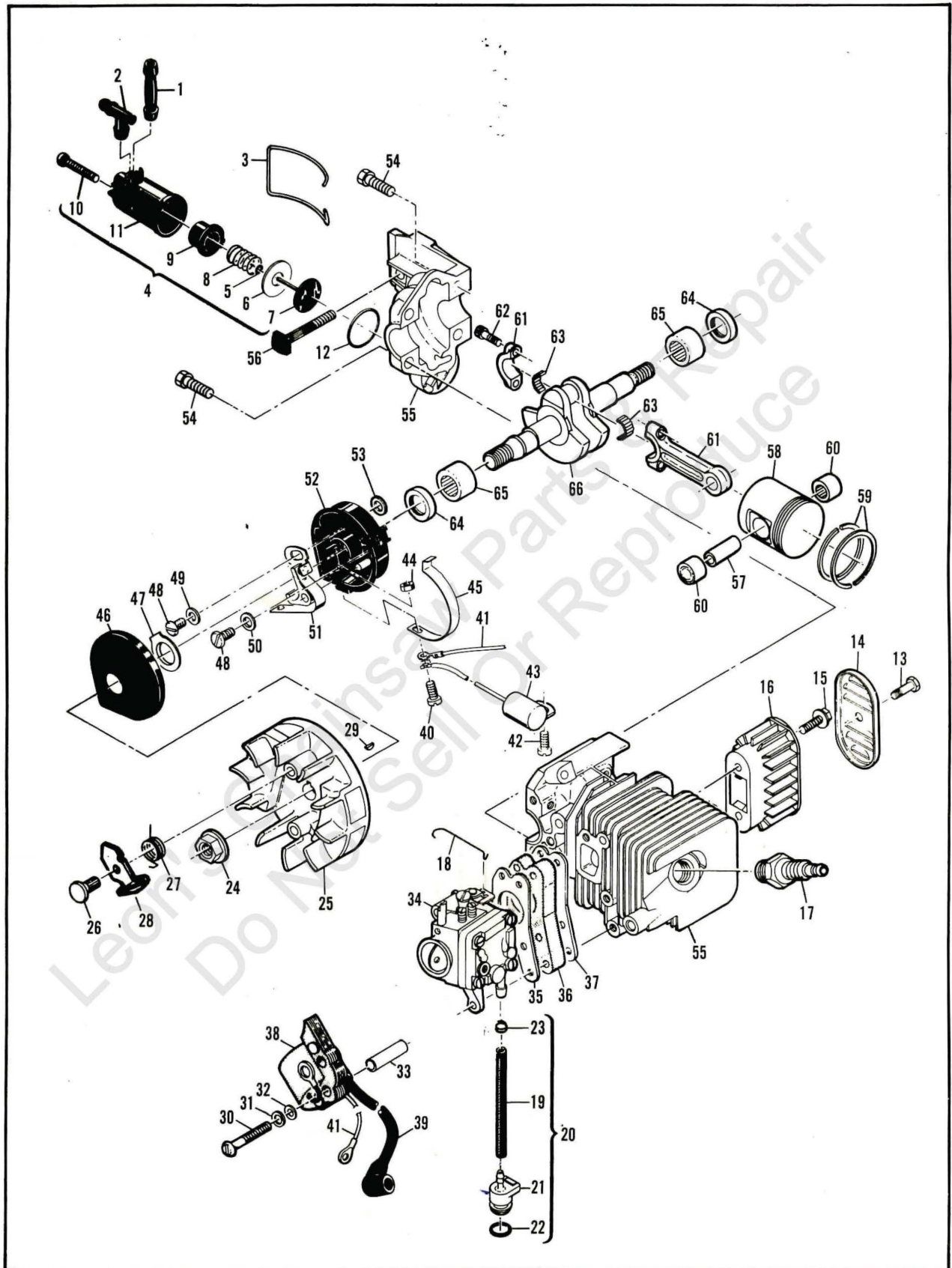


Figure 4. Powerhead Assembly

Figure 4. Powerhead Assembly

Item No.	Part Number	Description	Units Per Asy	Item No.	Part Number	Description	Units Per Asy
1	83898	Connector-Outlet	1	32	67177	Washer-Insulator	3
2	84613	Connector-Pump	1	33	68198	Tube-Insulator	3
3	83896	Bail-Mounting	1	34		Carburetor Asy (Fig 3)	
4	83886	Pump Asy-Pulse	1	35	68197	Gasket-Carburetor	1
5	105603	. "O" Ring	1	36	90713	Insulator-Carburetor	1
6	85769	. Ring-Pump Piston	1	37	90714	Gasket-Insulator	1
7	-92204	. Piston Asy-Pump	1	38	84957	Coil & Lamination Asy	1
8	83891	. Spring-Pump	1	39	50120	. Wire Asy-Spark plug	1
9	83890	. Sleeve-Pump	1	40	110364	Screw-Pan hd 6-32 x 5/8	1
10	110651	. Screw-Adjustment	1	41	69344	Wire Asy-Primary	1
11	83887	. Body Asy-Pump	1	42	110041	Screw-Pan hd 8-32 x 1/2 s/t	1
12	110653	"O" Ring	1	43	85358	Condenser	1
13	110674	Screw-Hx hd 10-24 x 1/2	1	44	100035	Nut-Hx 6-32	1
14	89684	Cover-Muffler	1	45	84502	Connector-Stop switch	1
15	110928	Screw-Hx hd 10-24 x 1/2	2	46	67841	Cover-Breaker box	1
16	89682	Body-Muffler	1	47	69323	Seal-Breaker box	1
17	63097	Spark Plug	1	48	-110969	Screw-Hx hd 8-32 x 1/2	2
18	89274	Rod-Throttle	1	49	69322	Washer-Special	1
19	-89059	① Hose-Fuel	1	50	105976	Washer-#8	1
20	90661	② Kit-Fuel Hose	1	51	88811	Breaker Asy	1
(19)	90659	② . Hose-Fuel	1	52	-84505A	Kit-Breaker Box	1
21	90660	. Adaptor-Fuel Hose	1	53	-92037	. Washer	1
22	110908	. "O" Ring	1	54	110639	Screw-Hx hd 12-24 x 1	4
23	87826	② . Clamp	1	55	-90665B	Cyl/C'Case Asy	1
24*	-110970	③ Nut-Hx 5/16-24	1	56	83856	. Bolt-Bar mounting	1
(24)	110931	④ Nut-Hx 3/8-24	1	57	66867	Pin-Piston	1
25	-91961A	③ Flywheel & Pawl Asy	1	58	68098	Piston Asy	1
26	68796	③ . Pin-Pawl	2	59	87165	. Ring Set-Piston	1
27	67814	③ . Spring-Pawl	2	60	110538	. Bearing-Needle	2
28	-91872A	③ . Pawl-Starter	2	61	68097	Connecting Rod Asy	1
(25)	69806	④ Flywheel & Pawl Asy	1	62	66853	. Screw-Special	2
(26)	68796	④ . Pin-Pawl	2	63	68095	. Roller-Needle (Set of 20)	1
(27)	67814	④ . Spring-Pawl	2	64	83859	Seal-Oil	2
(28)	69103	④ . Pawl-Starter	2	65	66854	Bearing-Needle	2
29	-102164	③ Key-Woodruff	1	66	-91932	③ Crankshaft	1
(29)	100106	④ Key-Woodruff	1	(66)	-86439A	④ Crankshaft	1
30	110586	Screw-Pan hd 8-32 x 1-3/4	3				
31	105976	Washer-#8	3				

*Flywheel nut torque should be 190 to 200 pound x inches (21.5 to 22.6 N.m.) for Nut, P/N 110970.

- ① Used on models with serial number prefix 13-, 14-.
- ② Used on models with serial number prefix 11-.
- ③ Used on models with serial number prefix 14-.
- ④ Used on models with serial number prefix 11-, 13-.

Service Specifications

Displacement	2.0 cu. in. (32cc)
Clutch Engaging Speed	2600 R.P.M.
Breaker Point Gap	.018" (.457 mm)
Timing	26° B.T.D.C.
Spark Plug Gap	.025" (.635 mm)

McCULLOCH CORPORATION



● MANUFACTURING ● SALES ● SERVICE ●

McCULLOCH
CORPORATION

900 Lake Havasu Ave.
Lake Havasu City, AZ 86403-2891

**FOR SERVICE-RELATED PROBLEMS,
REPAIR OR MAINTENANCE
TAKE YOUR UNIT TO THE NEAREST
AUTHORIZED McCULLOCH SERVICING
DEALER LISTED UNDER SAWS IN YOUR
TELEPHONE DIRECTORY YELLOW PAGES.**

If additional assistance is required, call this toll-free hot-line:
(800) 423-6302

Arizona residents call collect (602) 453-3681