

ILLUSTRATED PARTS LIST

MODELS	SERIAL NUMBER PREFIX	MODELS	SERIAL NUMBER PREFIX
600093B	11-, 13-, 14-	600093H	14-
600093C	11-, 12-, 13-, 14-	600093J	14-
600093D	14--	600093K	13-, 14-
600093E	13-, 14-	600093L	14-
600093F	14-	600093M	14-
600093G	14-	600093P	11-, 13-, 14-
		600093U	11-, 13-, 14-

Mini-Mac 25 & 30 chain saws are identified by a model number (600093) followed by a suffix letter (B, C, D, E, F, G, H, J, K, L, M, P, or U) stamped on the identification plate attached to the saw. Suffix letters denote variations in parts or assemblies in the manufacture of the saw.

Part numbers listed in this IPL which have a suffix letter or letters following the description, indicate the part is used only on the model(s) identified by the letter or letters.

Part numbers and descriptions without suffix letter or letters apply to all models of the Mini-Mac 25 & 30 chain saws.

Part numbers which have one or more dots (.) preceding their description may be ordered individually but they are also included in the kit or assembly whose description begins directly above the dot(s).

Part numbers which have changed since the previous printing of the IPL covering these saws, are indicated by a dash (-) preceding the new part number.

The policy of McCulloch Corporation is one of continual improvement in design, manufacturing and engineering advancement wherever possible to assure still finer two-cycle power tools. Hence, specifications, equipment, colors, design and manufacturer's suggested list prices are subject to change without notice and McCulloch Corporation reserves the right to make such changes without prior notification or obligation to backfit or supply backfit components for units previously shipped from the factory.

MINI-MAC 25 & 30 Chain Saw



JULY 1976

- CONTENTS -

	Page
Figure 1. General	2
Figure 2. CHAIN BRAKE Assembly ...	4
Figure 3. Carburetor Assembly	4
Figure 4. Powerhead Assembly	6
Accessories	5
Service Specifications	3



MINI-MAC 25 & 30

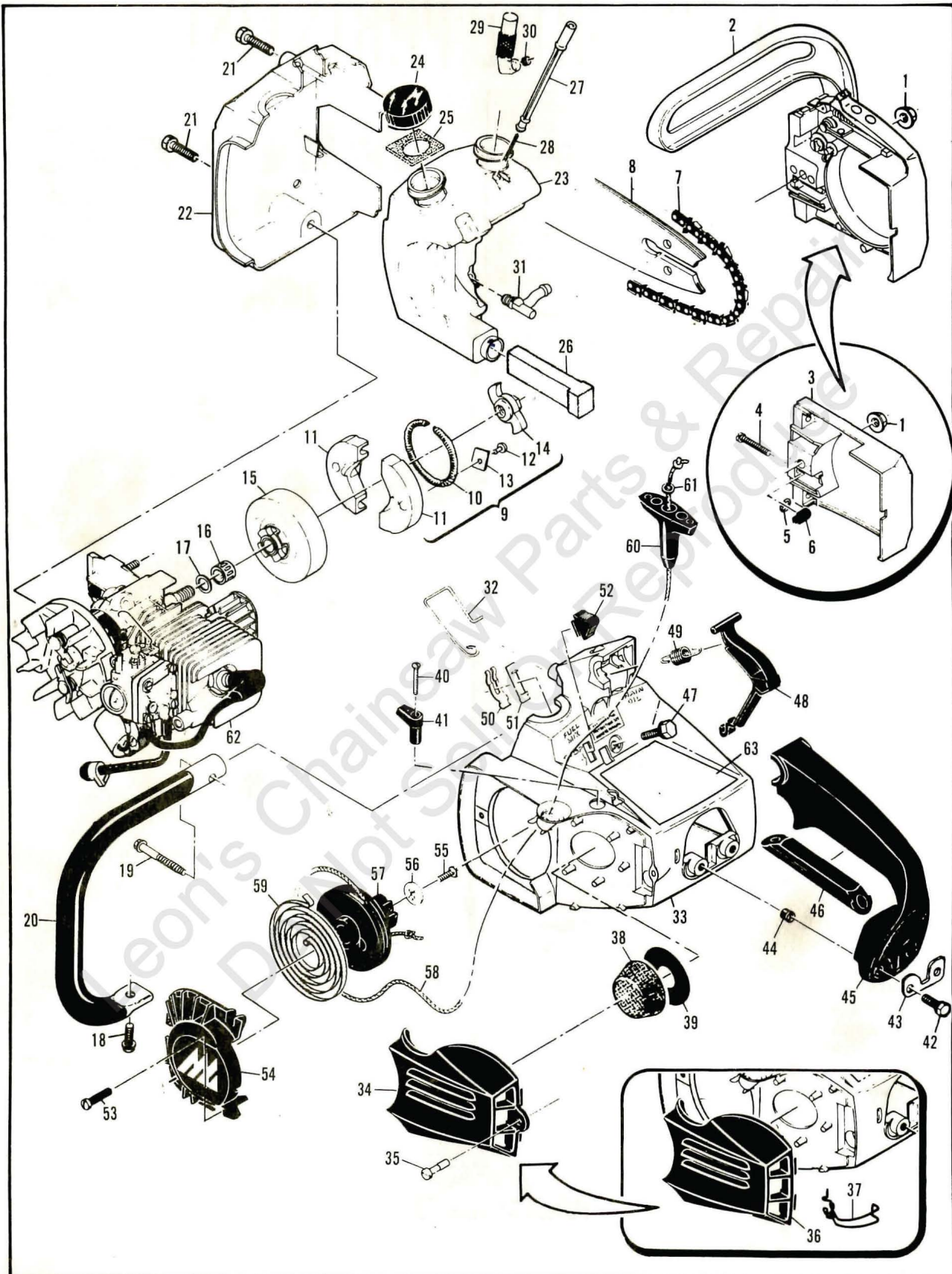


Figure 1. General

Figure 1. General

Item No.	Part Number	Description	Units Per Assy
1	110676	Nut-Hx 1/2-28	1
2		① CHAIN BRAKE Assy (Fig 2)	1
3	90636	② Guard Assy-Clutch	1
4	90658	② . Screw-Pan hd 8-32 x 1-1/8	1
5	110907	② . Ring-retaining	1
6	84929	② . Nut-Bar adjusting	1
7		Chain Assy (See Accessories)	
8		Bar (See Accessories)	
9	-92727	③ Clutch Assy	1
10	69358	③ . Spring - Clutch	1
11	85202	③ . Kit-Clutch Shoe	2
12	-110957	③ . . Rivet	2
13	85064	③ . . Plate	2
14	-92721	③ . . Spider	1
(9)	85450	④ Clutch Assy	1
(10)	69358	④ . Spring-Clutch	1
(11)	85202	④ . Kit-Clutch Shoe	2
(12)	110709	④ . Rivet	2
(13)	85064	④ . Plate	2
(14)	85449	④ . Spider	1
15	90150	Drum/Spkt/Brng Assy (B, C, D, E, F, G, H, J, K, L, M, U)	1
16	91222	. Kit - Needle Bearing (B, C, D, E, F, G, H, J, K, L, M, U)	1
(15)	85504	Drum & Sprocket Assy (P)	1
(16)	67650	Bearing-Sprocket (P)	1
17	67303	Washer-Sprocket (P)	1
18	-110953	Screw-Hx hd 12-24 x 5/8	1
19	110686	Screw-Hx hd 13-16 x 2	1
20	84791	Frame & Grip Assy	1
21	110639	Screw-Hx hd 12-24 x 1	2
22	88591	Cover-Fuel & Oil tank	1
23	91454A	Tank Kit -Fuel & Oil	1
24	91283	① . Cap-Fuel & Oil (Unvented)	2
(24)*	-90922	② . Cap-Fuel & Oil (Vented)	2
25	91148	. Seal-Fuel vent	1
26	84956	. Pickup-Fuel	1
27	83900A	. Piston-Manual oiler	1

Item No.	Part Number	Description	Units Per Assy
28	83946	. Spring-Piston	1
29	85557	. Body-Oiler	1
30	86438	⑤ Valve-Manual oil pump (C)	1
31	84653	⑤ Connector-Manual oiler (C)	1
32	84611	Rod-Manual oiler	1
33	-91859	Kit-Shroud Assy	1
34	-91853	③ . Cover-Air cleaner	1
35	-91796	③ . Screw-Air cleaner	1
36	90383	④ Cover-Air cleaner	1
37	83882	④ Retainer-Cover	1
38	85127	Filter-Air	1
39	84918	Washer-Air seal	1
40	110672	Screw-Oval hd 4-40 x 1	1
41	83870	Knob-Choke	1
42	-110953	Screw-Hx hd 12-24 x 5/8	2
43	-84520A	Plate-Washer	1
44	84519	Sleeve-Handle	2
45	83852A	Handle & Grip Assy	1
46	64872	② Grip-Handle	1
47	-110953	Screw-Hx hd 12-24 x 5/8	3
48	83878	Trigger	1
49	83940	Spring-Trigger	1
50	83935	Contact-Switch	1
51	83936	Protector-Switch	1
52	83934	Button-Switch	1
53	-110959	Screw-Hx hd 8-32 x 1/2	3
54	90425	Cover-Starter	1
55	-110706	Screw-Rd hd 8-32 x 5/8	1
56	68497	Washer-Special	1
57	83876	④ Drum-Starter	1
(57)	-92316	③ Drum/Rope Assy	1
58	83203	. Rope-Starter	1
59	83078	Spring-Rewind	1
60	91255	Kit-Starter handle	1
61	105490	. Washer-Starter handle	1
62		Powerhead Assy (Fig 4)	
63	-91694	Plate - Name (B, E, F, J, K, L, P, U)	1
(63)	-91693	Plate - Name (C, D, G, H, M)	1

① Used on models with serial number prefix 13-, 14-.

② Used on models with serial number prefix 11-, 12-.

③ Used on models with serial number prefix 14-.

④ Used on models with serial number prefix 11-, 12-, 13-.

⑤ Used on models with serial number prefix 11-.

* Not included in Fuel and Oil Tank Kit, P/N 91454A.

Service Specifications

Displacement	1.8 cu. in.(30cc)
Clutch Engaging Speed	2600 R.P.M.
Breaker Point Gap	.018" (.457 mm)
Timing	26° B.T.D.C.
Spark Plug Gap	.025" (.635 mm)

MINI-MAC 25 & 30

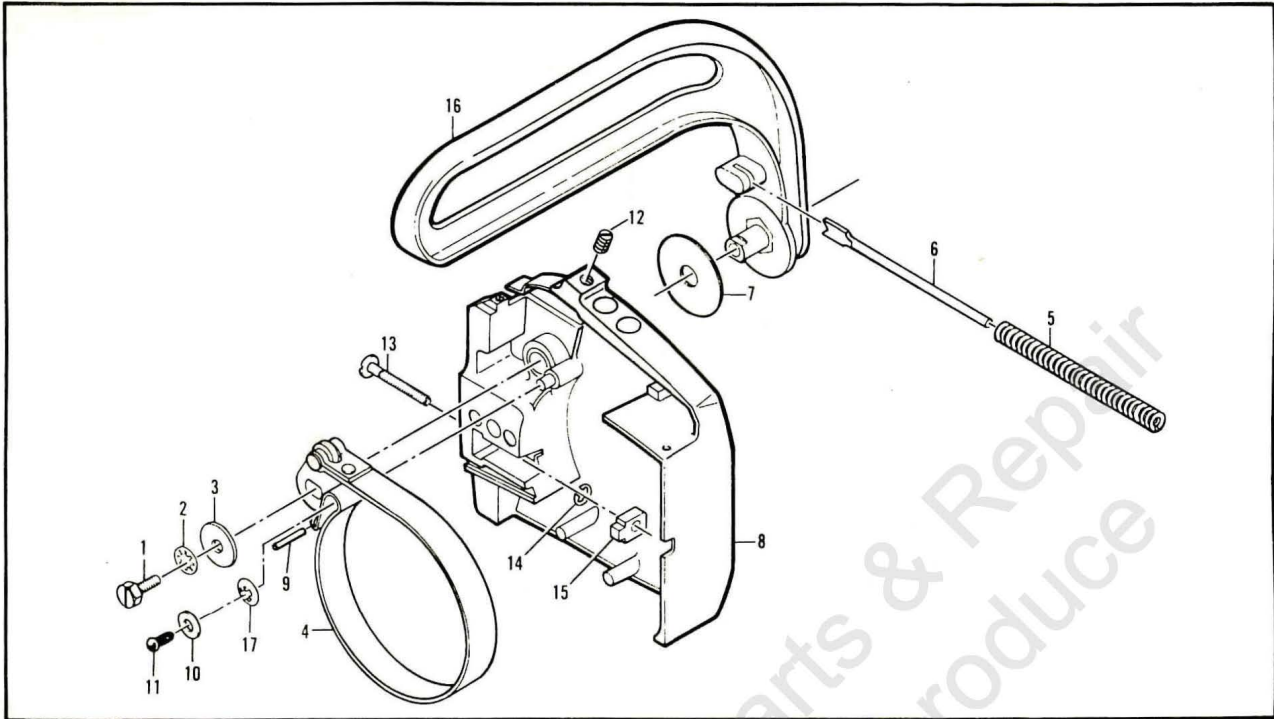


Figure 2. CHAIN BRAKE Assembly

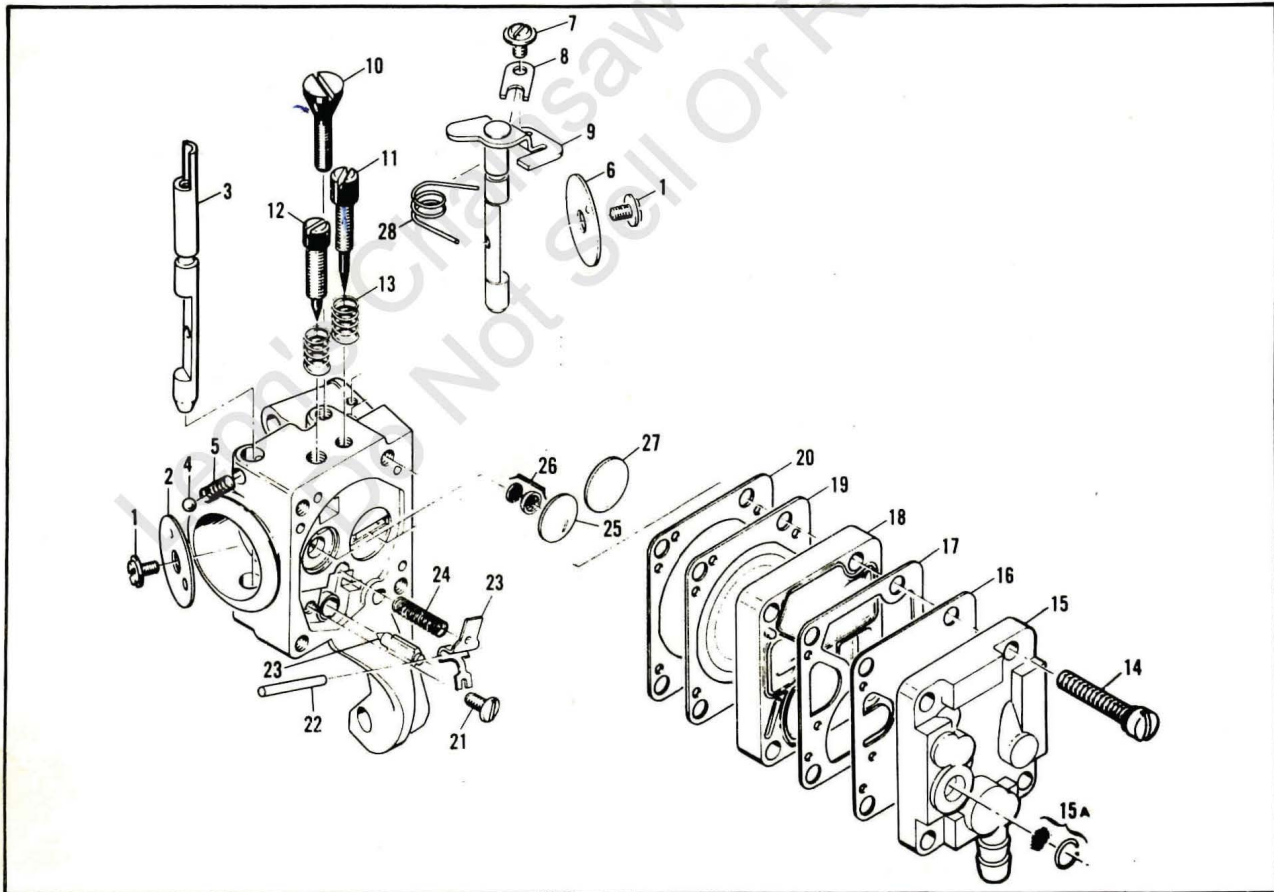


Figure 3. Carburetor Assembly

Figure 2. CHAINBRAKE Assembly

Item No.	Part Number	Description	Units Per Assy
	-90570B	CHAIN BRAKE Assy	
1	102762	. Screw-Hx hd 10-24 x 1/2	1
2	101194	. Washer-Lock #10	1
3	110712	. Washer	1
4	90580	. Band & Lever	1
5	90587A	. Spring-Brake Actuator	1
6	90588	. Guide-Spring	1
7	90967	. Washer-Actuating Lever	1

Item No.	Part Number	Description	Units Per Assy
8	90571C	. Kit-Housing/Spring	1
9	103047 ①	. Pin	1
10	100001 ①	. Washer	1
11	110946 ①	. Screw Drive-6 x 5/16	1
12	-110955 ①	. Screw-Set 8-32 x 1/2	1
13	90658	. Screw-Adjusting	1
14	110907	. Ring-Retaining	1
15	84929	. Nut-Bar adjusting	1
16	90576	. Lever-Actuator	1
17	110913 ②	Fastener-Springtip	1

- ① Used on models with serial number prefix 14-.
 ② Used on models with serial number prefix 13-.

Accessories

Part Number	Description
90745	Bar - 10" Mini Pro (M)
90641N	Chain Assy - 10" MP 370G (M)
90630	Bar - 10" Mini Mac (C, G)
90638N	Chain Assy - 10" MM370G (C, G)
90770	Bar - 12" Mac 6 (P)
88033N	Chain Assy - 12" SM250G (P)
90549	Bar - 12" Mini Pro (B, D, K, L, U)
90642N	Chain Assy - 12" MP370G (B, D)
90639N	Chain Assy - 12" MM370G (K, L, U)
90550	Bar - 14" Mini Pro (F, J)

Part Number	Description
90640N	Chain Assy - 14" MM370G (F, J)
83687	Guide-Timing
-91753	Case-Carrying
88756	Scrench
68747	Gasket-Spark arrester
84992	Kit-Reed Muffler
85924	Kit-Spark Arrester (PM6 type)
89685	Screen-Spark arrester
85062	Kit-Piston Tool

Figure 3. Carburetor Assembly

Item No.	Part Number	Description	Units Per Assy
	90918	Carburetor Assy	1
1	*83755	. Screw-Plate	2
2	68556	. Plate-Choke	1
3	85033	. Shaft-Choke	1
4	*100302	. Ball-Choke friction	1
5	*67504	. Spring-Choke friction	1
6	68553	. Plate-Throttle	1
7	70798	. Screw-Clip	1
8	68554	. Clip-Throttle shaft	1
9	90471	. Shaft Assy-Throttle	1
10	*68566	. Screw-Idle speed	1
11	*86446	. Needle-Idle	1
12	*86447	. Needle-High speed	1
13	*67502	. Spring-Needle	2
14	*68564	. Screw Assy-Body	4
15	91347	. Cover Assy-Pump	1
15A	85629	. Kit-Vent screen	1

Item No.	Part Number	Description	Units Per Assy
16	*68563	. Diaphragm-Fuel pump	1
17	*85035	. Gasket-Pump diaphragm	1
18	85030	. Body-Fuel pump	1
19	*85036	. Diaphragm-Metering	1
20	*85034	. Gasket-Diaphragm	1
21	*67500	. Screw-Lever pin	1
22	*67508	. Pin-Lever	1
23	85059	. Kit-Needle & lever	1
24	*68567	. Spring-Lever	1
25	*68559	. Plug-Welsh 7/16	1
26	*83758	. Kit-Check valve	1
27	*68560	. Plug-Welsh 1/2	1
28	89785	. Spring-Throttle return	1
	86463	Repair Kit	

*Included in Repair Kit, P/N 86463

MINI-MAC 25 & 30

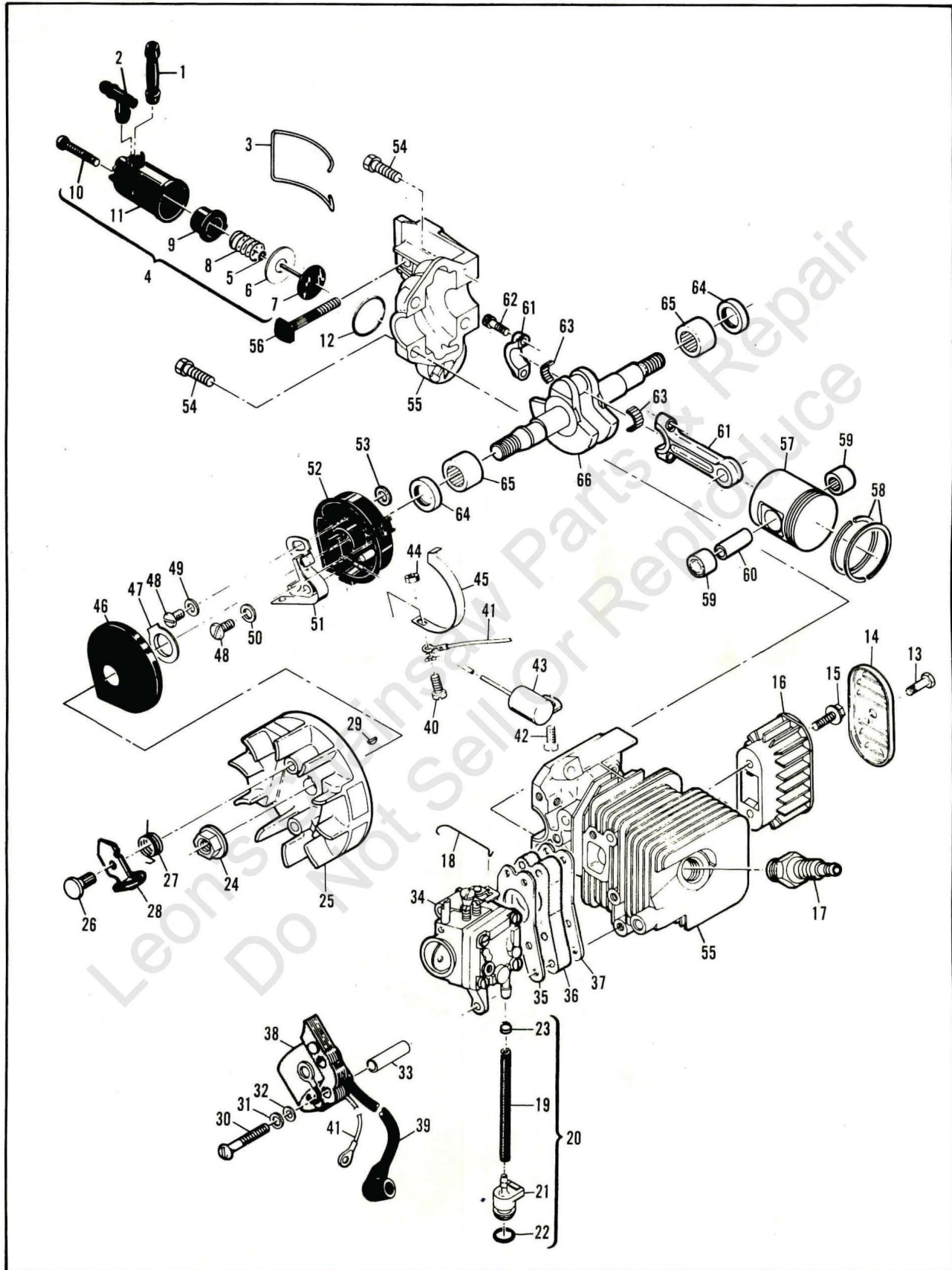


Figure 4. Powerhead Assembly

MINI-MAC 25 & 30

Figure 4. Powerhead Assembly

Item No.	Part Number	Description	Units Per Asy	Item No.	Part Number	Description	Units Per Asy
1*	83898	Connector-Outlet	1	34		Carburetor Asy (Fig 3)	
2*	84613	Connector-Pump	1	35	68197	Gasket-Carburetor	1
3*	83896	Ball-Mounting	1	36	90713	Insulator-Carburetor	1
4*	83886	Pump Asy-Oiler	1	37	90714	Gasket-Insulator	1
5*	105603	. "O" Ring	1	38	84957	Coil & Lamination Asy	1
6*	85769	. Ring-Pump piston	1	39	50120	. Wire Asy-Spark plug	1
7*	-92204	. Piston Asy-Pump	1	40	110364	Screw-Pan hd 6-32 x 5/8	1
8*	83891	. Spring-Pump	1	41	69344	Wire Asy-Coil	1
9*	83890	. Sleeve-Pump	1	42	110041	Screw-Pan hd 8-32 x 1/2 s/t	1
10*	110651	. Screw-Adjustment	1	43	85358	Condenser	1
11*	83887	. Body Asy-Pump	1	44	100035	Nut-Hx 6-32	1
12*	110653	. "O" Ring	1	45	84502	Connector-Stop switch	1
13	110674	Screw-Hx hd 10-24 x 1/2	1	46	67841	Cover-Breaker box	1
14	89684	Cover-Muffler	1	47	69323	Seal-Breaker box	1
15	110928	Screw-Hx hd 10-24 x 1/2	2	48	110041	Screw-Pan hd 8-32 x 1/2 s/t	2
16	89682	Body-Muffler	1	49	69322	Washer-Special	1
17	63097	Spark Plug	1	50	105976	Washer-#8	1
18	89274	Rod-Throttle	1	51	88811	Breaker Asy	1
19	-89059	① Hose-Fuel	1	52	-84505.	Kit-Breaker Box	1
20	90661	② Kit-Fuel Hose	1	53	-92037	. Washer	1
(19)	90659	② Hose-Fuel	1	54	110639	Screw-Hx hd 12-24 x 1	4
21	90660	. Adaptor-Fuel hose	1	55	-92279	Kit-Cyl/C'Case/Piston	1
22	110908	. "O" Ring	1	56	83856	. Bolt-Bar mounting	1
23	87826	② . Clamp	1	57	-92274	③ . Piston Asy	1
24**	-110970	③ Nut-Hx 5/16-24	1	58	-92752	③ . . Set-Piston Rings	1
(24)	110931	④ Nut-Hx 3/8-24	1	59	110538	③ . . Bearing-Needle	2
25	-91961	③ Flywheel & Pawl Asy	1	(57)	84981	④ Piston Asy	1
26	68796	③ . Pin-Pawl	2	(58)	87164	④ . Set-Piston Rings	1
27	67814	③ . Spring-Pawl	2	(59)	110538	④ . Bearing-Needle	2
28	-91872	③ . Pawl-Starter	2	60	66867	Pin-Piston	1
(25)	69806	④ Flywheel & Pawl Asy	1	61	68097	Connecting Rod Asy	1
(26)	68796	④ . Pin-Pawl	2	62	66853	. Screw-Special	2
(27)	67814	④ . Spring-Pawl	2	63	68095	. Roller-Needle (Set of 20)	1
(28)	69103	④ . Pawl-Starter	2	64	83859	Seal-Oil	2
29	-102164	③ Key-Woodruff	1	65	66854	Bearing-Needle	2
(29)	100106	④ Key-Woodruff	1	66	-91932	③ Crankshaft	1
30	110586	Screw-Pan hd 8-32 x 1-3/4	3	(66)	86439A	④ Crankshaft	1
31	105976	Washer-#8	3				
32	67177	Washer-Insulating	3				
33	68198	Tube-Insulating	3				

*Not used on Mini Mac 25 models with serial number prefix 11-.

**Flywheel nut torque should be 170 to 175 pound-inches (196.84 to 202.60 kilogram-centimeters) for nut, P/N 110970.

① Used on models with serial number prefix 13-, 14-.

② Used on models with serial number prefix 11-, 12-.

③ Used on models with serial number prefix 14-.

④ Used on models with serial number prefix 11-, 12-, 13-.

McCULLOCH



● MANUFACTURING ● SALES ● SERVICE ●

McCULLOCH CORPORATION

P.O. BOX 92180, LOS ANGELES, CALIFORNIA 90009

INTERNATIONAL DIVISIONS:

LOS ANGELES, CALIFORNIA, P.O. BOX 92181
SINGAPORE, GOLDHILL PLAZA, SINGAPORE II
SAO PAULO, BRAZIL, CAIXA POSTAL 21-492

McCULLOCH OF CANADA LTD.

6338 VISCOUNT ROAD, MALTON, ONTARIO L4V 1H4, CANADA

McCULLOCH OF EUROPE, N. V.

GEERDEGEM SCHONENBERG, 299 2800 MECHELEN, BELGIUM

McCULLOCH OF AUSTRALIA PTY., LTD.

P.O. BOX 223, SEVEN HILLS, N.S.W. 2147, AUSTRALIA