

# ILLUSTRATED PARTS LIST

MODEL NAME	SERIAL NUMBER PREFIX	MODEL
MAC 4600	11-	600465-00
MAC 4600	11-	600465-01
MAC 4600	11-	600465-02
MAC 4600	11-	600465-07
MAC 4600	11-	600465-09
MAC 4600	11-	600465-12
MAC 4900	11-	600498-01
MAC 4900	11-	600498-02
MAC 4900	11-	600498-03
MAC 4900	11-	600498-08
MAC 4900	11-	600498-13
PRO-MAC 4700	11-	600465-03
PRO-MAC 5000	11-	600498-04
SILVER EAGLE 2818	11-	600465-08
SILVER EAGLE 3020	11-	600498-09

MAC  
PRO-MAC  
SILVER EAGLE  
GASOLINE-POWERED  
CHAIN SAWS

McCulloch products are identified by a model number (in this instance 600465, etc) followed by a suffix number (00, etc.). Suffix numbers denote variations in parts or assemblies used in the manufacture of this product. Illustrated Parts Lists (IPLs) contain a PART NUMBER, DESCRIPTION, UNITS per assembly and STOCKING CODE for each part.

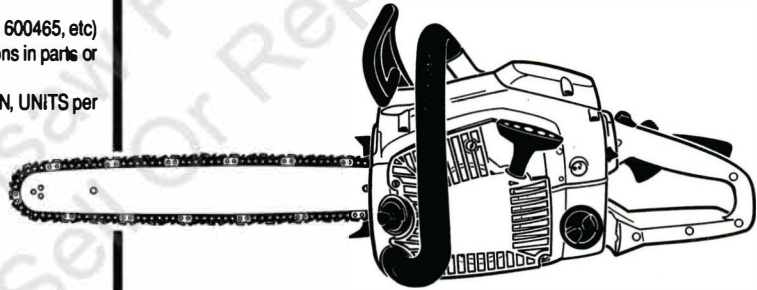
**Stocking Codes are:**

- A- Dealer stocked. Fast to medium moving part.
- B- Distributor stocked. Medium to slow moving part.
- C- Factory stocked. Slow moving part.
- T- Indicates a McCulloch service tool.

**NOTE:** The following explains symbols/footnotes in this IPL:

- ( - ) A dash preceding a PART NUMBER indicates that it is a new part number, different from the one listed in the previous IPL for this unit.
- ( . ) One or more dots ( . Spring, Starter) preceding a part DESCRIPTION indicates the part is included in the kit or assembly described directly above the dot(s).
- ( -- ) If four dashes appear in place of a PART NUMBER, the part is not available individually but is included in the next higher assembly or subassembly.
- ① ② Circled numbers preceding a DESCRIPTION footnote the part or assembly to additional information on the page.
- ( \* ) An asterisk draws attention to general information.

The policy of McCulloch Corporation is one of continual improvement in design, manufacturing and engineering advancement wherever possible to assure still finer power tools. Hence, specifications, equipment colors, design and manufacturer's suggested list prices are subject to change without notice. McCulloch Corporation reserves the right to make such changes without prior notification or obligation to backfit or supply backfit components for units previously shipped from the factory.



## CONTENTS

	PAGE
FIGURE 1 General Assembly . . . . .	2
FIGURE 2 Chain Brake Assembly . . . . .	3
FIGURE 3 Engine Assembly . . . . .	4
FIGURE 4 Rear Handle Assembly . . . . .	6
FIGURE 5 Carburetor Assembly . . . . .	7
FIGURE 6 Specifications & Service Tools . . . . .	8

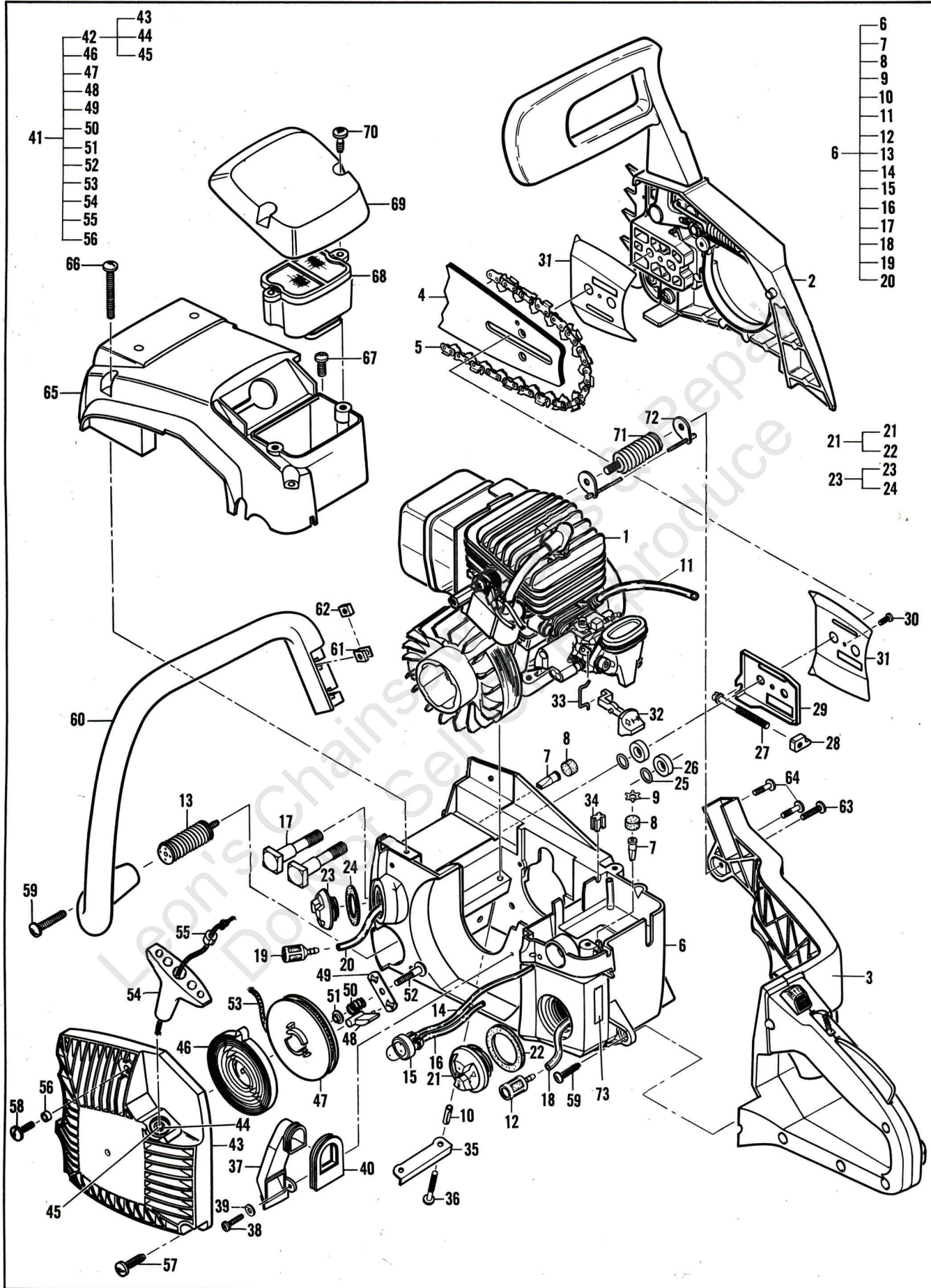
**NOVEMBER 1994**

**McCULLOCH®**

P.O. Box 11990 Tucson, Arizona 85734

# FIGURE 1

# GENERAL ASSEMBLY



# FIGURE 1

# GENERAL ASSEMBLY

ITEM NO.	STK. CODE	PART NUMBER	DESCRIPTION	UNITS PER ASY.	ITEM NO.	STK. CODE	PART NUMBER	DESCRIPTION	UNITS PER ASY.
1		Figure 3	Engine Assembly		40	C	322666	Boot, Intake	1
2		Figure 2	Chain Brake Assembly		41	C	300226	①② Starter Assembly (Yellow)	1
3		Figure 4	Rear Handle Assembly		42	C	301914	. Housing/Rope Guide Assembly	1
4		Figure 6	Bar			C	301679	③ Starter Assembly (Grey)	1
5		Figure 6	Chain			C	301915	. Housing/Rope Guide Assembly	1
6	C	300730	① Fuel/Oil Tank Assembly (Black)	1	43	--	--	.. Housing, Starter (Yellow)	1
	C	301600	② Fuel/Oil Tank Assembly (Grey)	1		--	--	.. Housing, Starter (Grey)	1
7	A	322199	. Valve, Duckbill	2	44	--	--	.. Rope Guide	1
8	A	300259	. Filter, Foam	2	45	--	--	.. Tube, Rope Guide	1
9	C	322859	. Retainer, Vent	1	46	A	300475	. Spring, Starter Rewind	1
10	B	322883	. Spacer	4	47	B	300228	. Pulley, Starter	1
11	B	322647	. Hose, Pulse	1	48	C	300229	. Pawl, Starter	2
12	A	300869	. Filter, Fuel	1	49	A	300230	. Plate, Starter	1
13	A	301417	. Isolator Assembly, Handle	1	50	C	300231	. Spring, Friction	1
14	A	322860	. Hose, Fuel	1	51	B	300232	. Spacer, Starter	1
15	A	224242-02	. Primer, Remote	1	52	C	300233	. Screw, Shoulder	1
16	A	322861	. Hose, Primer	1	53	A	300234	. Rope, Starter	1
17	C	111107	. Bolt, Bar 5/16-18, Shoulder	2	54	A	87851	. Handle, Starter	1
18	C	218480	. Hose, Fuel/Oil	1	55	A	223944	. Bushing, Starter	1
19	A	225062	. Pickup, Oil	1	56	A	111157	. Spacer, 10 x .135	1
20	B	322867	. Hose, Oil	1	57	C	111111	Screw, 10-14 x .625 Torx	3
21	B	301112	Fuel Cap Assembly	1	58	A	217935	Screw, 10-24 x .5 Torx	1
22	C	322742	. Gasket, Fuel Cap	1	59	B	111068	Screw, 10-14 x 1.38 Torx	1
23	A	300917	Oil Cap Assembly	1	60	C	322671	Handle, Front	1
24	B	322863	. Gasket, Oil Cap	1	61	A	300292	Retainer, Nut	2
25	A	111142	O-Ring, .013	2	62	A	218005	Nut, Square 10-24	2
26	A	322658	Washer, Bar Bolt	2	63	C	111117	Screw, 10-14 x 1 Plastite	1
27	A	322634	Screw, Bar Adjusting	1	64	C	300296	Screw, 10-24 x .5 Pn Hd Tx	2
28	A	322646	Nut, Bar Adjusting	1	65	C	301419	①③ Top Cover Assembly (Black)	1
29	C	322873	Plate, Bar	1		C	301602	② Top Cover Assembly (Grey)	1
30	C	111143	Screw, 6-19 x .375	1	66	C	111110	Screw, 10-14 x 2	2
31	C	301612	Plate, Bar Guide	2	67	C	111109	Screw, 10-14 Torx Head	1
32	C	322880	Lever, Choke	1	68	A	300922	Air Cleaner Assembly	1
33	B	300728	Rod, Choke	1	69	C	322659	①③ Cover, Air Cleaner (Black)	1
34	C	323339	Plug, Pulse Hose	1		A	323333	② Cover, Air Cleaner (Grey)	1
35	C	301615	Plate, Flange	2	70	A	111099	Screw, 10-24 x .625 Pn Hd Tx	2
36	A	217937	④ Screw, 10-24 x 1 Torx	4	71	C	301416	Isolator Assembly	1
37	C	322665	Precleaner Assembly	1	72	C	323344	Safety Cable Assembly	1
38	A	223357	Screw, 8-16 Plastite	1	73	C	46755-29	Label, Choke	1
39	B	105976	Washer, #8 Plain	1					

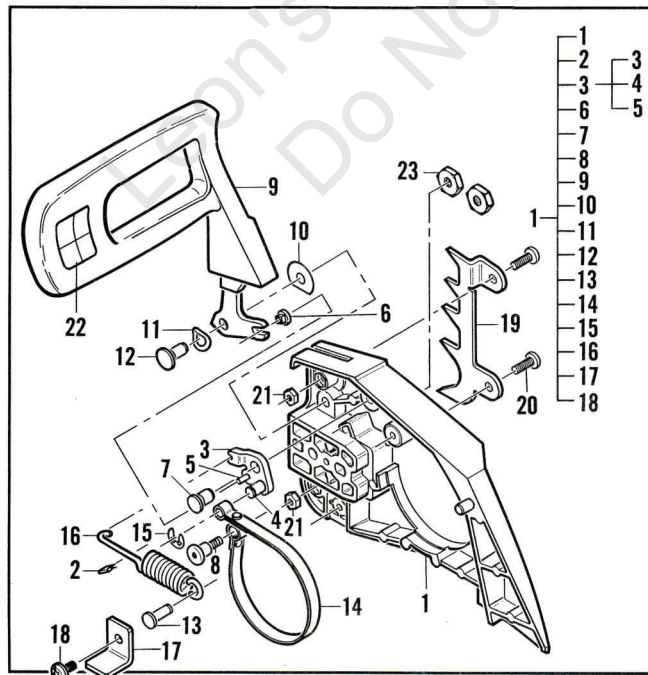
- ① 11600465-00 11600498-01
- 11600465-01 11600498-02
- 11600465-02 11600498-03
- 11600465-07 11600498-08
- 11600465-09 11600498-13
- 11600465-12

- ② 11600465-03 11600498-04
- ③ 11600465-08 11600498-09

④ See Torque Chart on Page 8.

# FIGURE 2

# CHAIN BRAKE ASSEMBLY

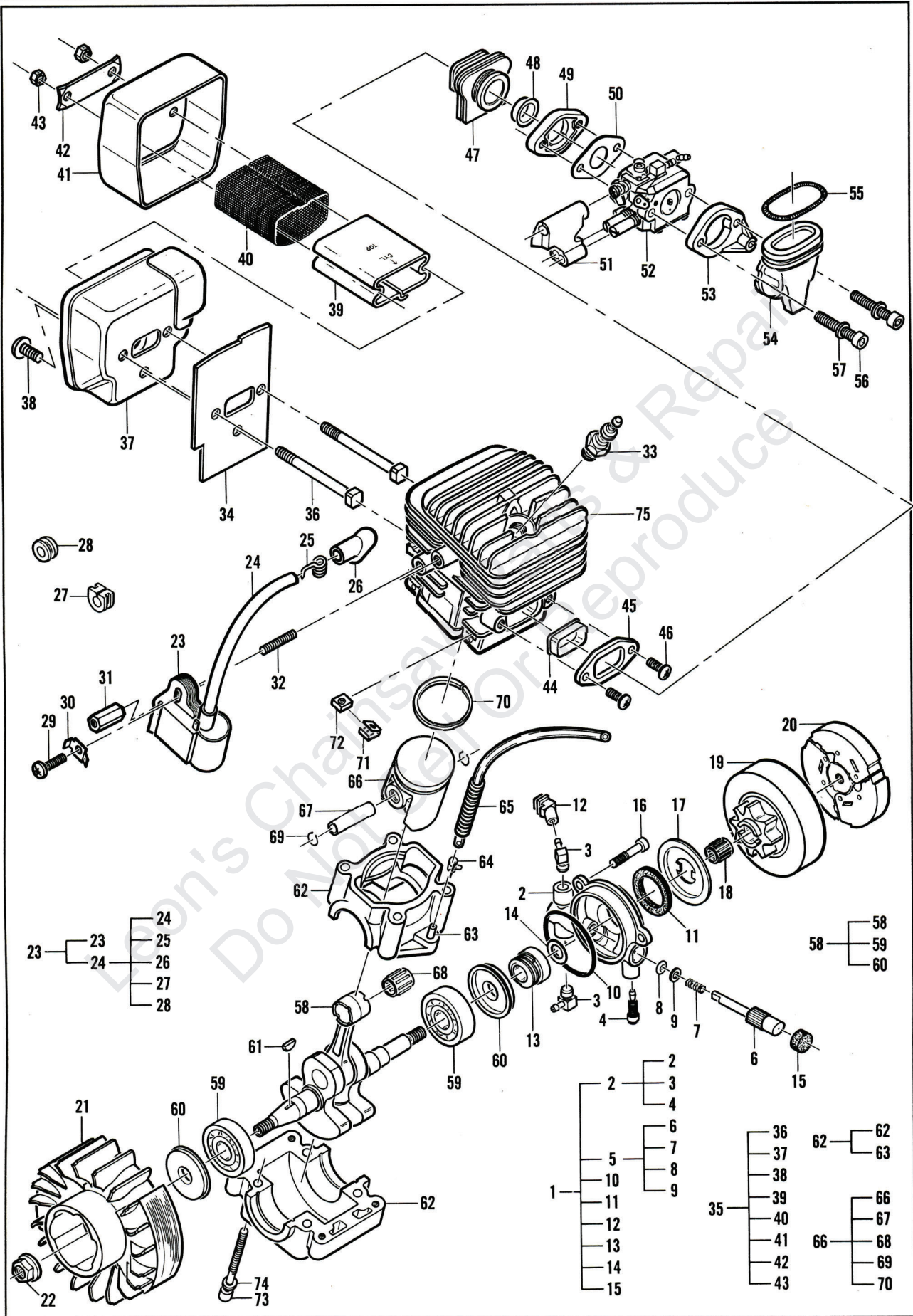


ITEM NO.	STK. CODE	PART NUMBER	DESCRIPTION	UNITS PER ASY.
1	A	300723	① Chain Brake Assembly (Yellow)	1
	C	301680	② Chain Brake Assembly (Grey)	1
2	C	110737	. Clip, 'U'	1
3	--	--	. Latch Assembly, Chain Brake	1
4	--	--	.. Pin, Brake Band	1
5	--	--	.. Pin, Latch	1
6	--	--	. Slider	1
7	--	--	. Pivot, Latch	1
8	C	322886	. Screw, Band Anchor	1
9	--	--	. Flag, Brake	1
10	--	--	. Washer, 'D'	1
11	--	--	. Washer, Spring	1
12	--	--	. Lever Pivot	1
13	--	--	. Pin, Spring Hook	1
14	C	323537	. Band, Brake	1
15	C	218079	. Ring, Retaining	1
16	B	217440	. Spring, Chain Brake	1
17	B	218641	. Stop, Chain	1
18	B	219195	. Screw, TR 10-24 x .5 SL	1
19	B	301614	Spike	1
20	C	111169	Screw, 10-24 x .375	2
21	A	218315	Nut, 10-24	2
22	B	219058	Label, Safety	1
23	A	322885	Nut, Bar 5/16-18	2

- ① 11600465-00 11600465-07 11600498-03 ② 11600465-08
- 11600465-01 11600465-09 11600498-04 11600498-09
- 11600465-02 11600465-12 11600498-08
- 11600465-03 11600498-01 11600498-13
- 11600498-02

**FIGURE 3**

**ENGINE ASSEMBLY**



# FIGURE 3

# ENGINE ASSEMBLY

ITEM NO.	STK. CODE	PART NUMBER	DESCRIPTION	UNITS PER ASY.	ITEM NO.	STK. CODE	PART NUMBER	DESCRIPTION	UNITS PER ASY.
1	A	301912	Kit, Oil Pump Assembly	1	40	B	300719	. Screen, Spark Arrester	1
2	A	300721	. Pump Assembly, Oil	1	41	C	301608	. Body, Muffler, Outer	1
3	A	322182	.. Fitting	2	42	B	301609	. Lock Plate	1
4	C	322635	.. Screw, Adjustment	1	43	A	216682	ⓐ . Nut, Hex, Lock 10-24	2
5		301913	.. Kit, Gear/Plunger Assembly	1	44	C	322655	. Eyelet, Boot	1
6	--	--	.. Piston/Gear Assembly	1	45	C	322649	. Flange, Boot	1
7	--	--	.. Spring, Comp.	1	46	B	219881	ⓑ . Screw, 10-24 x .62 Tr Hd Tx	2
8	--	--	.. O-Ring	1	47	C	322648	. Boot, Carburetor	1
9	A	110582	.. Washer	1	48	C	322656	. Eyelet, Carburetor	1
10	C	111162	. O-Ring, 1.625 x .06	1	49	C	322650	. Flange, Carburetor	1
11	A	323435	. Washer, Felt	1	50	A	323536	. Gasket, Carburetor	1
12	B	322864	. Connector, Oil Pump	1	51	C	322879	. Boot, Carburetor Adjustment	1
13	C	322662	. Gear, Worm	1	52		Figure 5	. Carburetor Assembly	1
14	C	322884	. Washer	1	53	C	322652	. Bracket, Carburetor	1
15	B	323126	. Seal, Felt	1	54	C	322653	. Boot, Intake	1
16	C	111108	. Screw, Plastite #8	3	55	C	322654	. Spring, Garter	1
17	C	322856	. Washer, Clutch Drum	1	56	C	111105	ⓐ . Screw, 10-24 (Carb. Clamp)	2
18	C	111104	. Bearing, 10 x 13 x 13mm	1	57	A	216635	. Washer, Pl .203 ID	2
19	A	301338	. Drum/Sprocket Assembly (.325 x 8T)	1	58	C	301917	. C'shaft/Con. Rod/Bearing Assembly	1
20	A	300726	. Clutch Assembly (3-shoe)	1	59	C	215946	. Bearing, Ball	2
21	A	322848	. Flywheel	1	60	A	300222	. Seal, Crankshaft	2
22	A	110961	ⓐ . Nut, Hex 5/16-24	1	61	A	102164	. Key, WDF #206	1
23	B	301759	. Ignition Assembly	1	62	C	301925	. Crankcase/Fitting Assembly	1
24	A	223884	.. Kit, Spark Plug Wire	1	63	C	322882	. Fitting, Pulse Line	1
25	A	102556	.. Connector, Spark	1	64	C	323395-01	. Clamp, Wire, Hose 1/4"	1
26	A	95266	.. Boot, Spark Plug	1	65	B	323433	. Conduit, Flex	1
27	A	215533-01	ⓑ . Grommet, H/T Lead	1	66	C	301920	ⓐ . Piston Assembly, 46cc	1
28	A	110995	ⓑ . Grommet, S/Plug Wire	1		C	301921	ⓑ . Piston Assembly, 49cc	1
29	A	217936	ⓑ . Screw, TR 10-24 x .75 Torx	1	67	C	215836	. Pin, Piston	1
30	C	322881	. Contact, Ground	1	68	C	215837	. Bearing, Piston Pin	1
31	A	322854	ⓑ . Spacer, Nut 10-24 x .834	1	69	A	215876	. Ring, Retaining	2
32	B	322855	. Stud, 10-24 x 1.105	1	70	C	301919	ⓐ . Ring, Piston, 46cc	1
33	A	62345	ⓐ . Spark Plug, DJ8J	1		C	301918	ⓑ . Ring, Piston, 49cc	1
	B	93018	ⓑ . Spark Plug, RDJ8J	1	71	A	300292	. Retainer, Nut	4
34	C	322853	. Baffle, Muffler (Gasket)	1	72	A	218005	. Nut, Square 10-24	4
35	C	300923	. Muffler Assembly	1	73	C	111095	ⓑ . Screw, 10-24 x 2.75 Torx	4
36	C	300720	. Screw, Muffler	2	74	A	216683	. Washer, Special #10	4
37	C	301607	. Body Assembly, Muffler	1	75	C	301922	ⓐ . Cylinder, 46cc	1
38	A	217935	ⓑ . Screw, TR 10-24 x .5 Torx	1		C	301923	ⓑ . Cylinder, 49cc	1
39	C	300718	. Baffle, Muffler	1					

- ⓐ 11600465-00
- 11600465-01
- 11600465-02
- 11600465-03
- 11600465-07
- 11600465-08
- 11600498-01
- 11600498-02
- 11600498-03
- 11600498-04
- 11600498-08
- 11600498-09

- ⓑ 11600465-09
- 11600465-12
- 11600498-13

- ⓐ 11600465-00
- 11600465-01
- 11600465-02
- 11600465-03
- 11600465-07
- 11600465-08
- 11600465-09
- 11600465-12

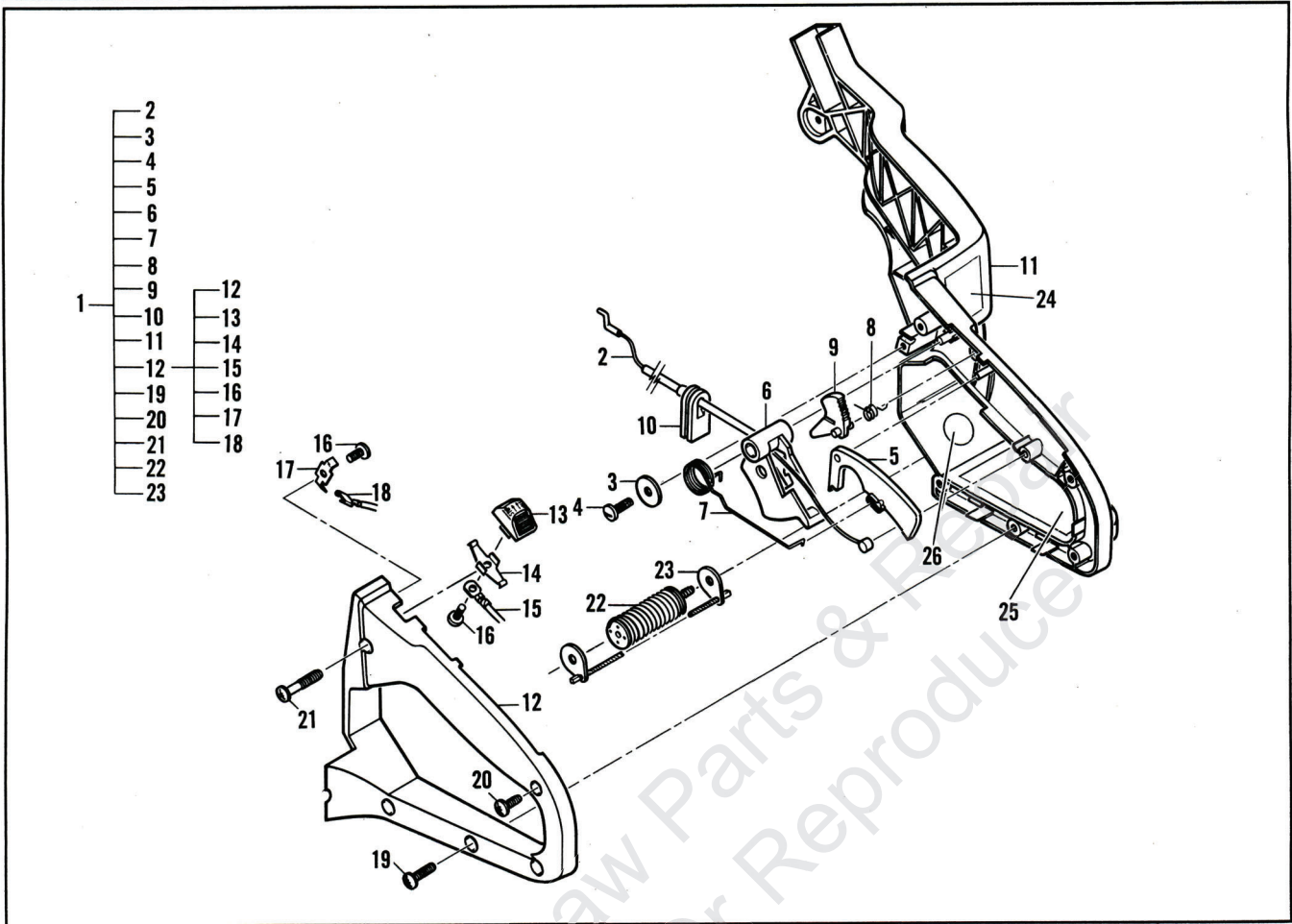
- ⓑ 11600498-01
- 11600498-02
- 11600498-03
- 11600498-04
- 11600498-08
- 11600498-09
- 11600498-13

ⓑ Not used

ⓑ See Torque Chart on Page 8.

# FIGURE 4

# REAR HANDLE ASSEMBLY



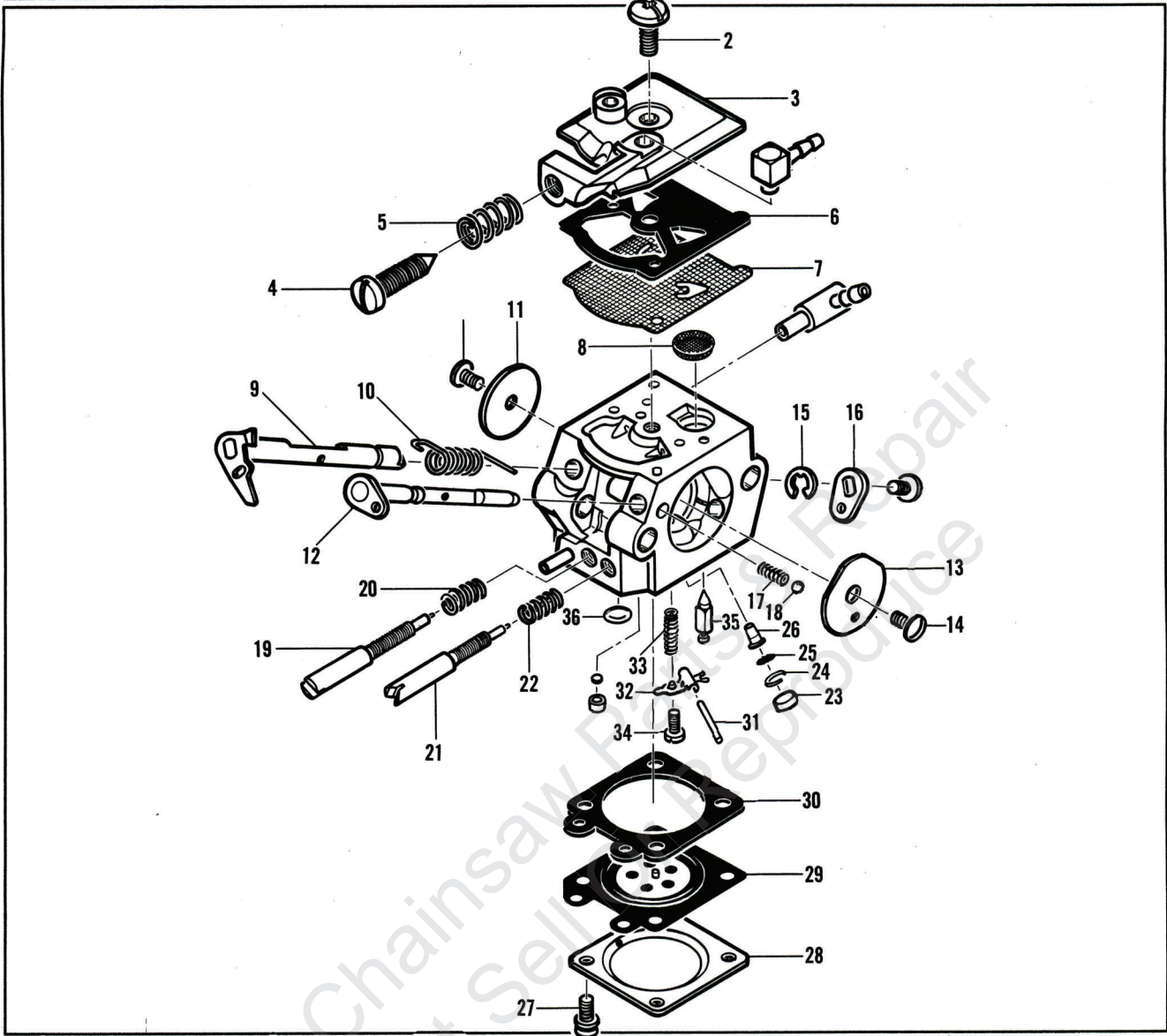
ITEM NO.	STK. CODE	PART NUMBER	DESCRIPTION	UNITS PER ASY.
1	C	301916	Handle/Trigger Assembly	1
2	A	300727	. Cable, Throttle	1
3	A	300297	. Washer, .19 ID x .68 OD	1
4	A	111180	. Screw, 8-16 x .5 Torx	1
5	C	322870	. Release, Trigger	1
6	C	322869	. Trigger	1
7	A	322875	. Spring, Trigger	1
8	C	322876	. Spring, High Idle	1
9	C	322874	. Latch, High Idle	1
10	C	322878	. Grommet, Throttle	1
11	C	322670	. Frame, Rear	1
12	C	301397	. Cover Assembly, Handle	1
13	B	224245	.. Button, Stop Switch	1
14	B	62451	.. Contact, Ignition Switch	1
15	B	322851	.. Wire Assembly	1
16	B	111069	.. Screw, 8-16 x .375 Plastite	2
17	C	322881	.. Contact, Ground	1
18	A	322852	.. Wire, Ground Assembly	1

ITEM NO.	STK. CODE	PART NUMBER	DESCRIPTION	UNITS PER ASY.
19	A	111113	. Screw, Rear Frame Cover	3
20	A	111180	. Screw, 8-16 x .5 Torx	1
21	A	300299	. Screw, 8-16 x 1 Torx Plastite	1
22	A	301417	. Isolator Assembly, Handle	1
23	C	323344	. Safety Cable Assembly	1
24	C	46754-89	① Label, ANSI (Eng/Fr)	1
	C	46755-10	③ Label, ANSI (Tri-lingual)	1
	C	46755-07	④ Label ANSI (Eng/Span)	1
25	C	46752-21	④ Label, Start Instructions (Eng/Sp)	1
	C	46753-74	①②③ Label, Start Inst.(Eng/Fr)	1
26	C	322386	③④ Label, UL Listing	1

① 11600465-09	④ 11600465-00	11600498-01
② 11600465-12	11600465-01	11600498-02
11600498-13	11600465-02	11600498-03
③ 11600465-03	11600465-07	11600498-08
11600498-04	11600465-08	11600498-09

# FIGURE 5

# CARBURETOR ASSEMBLY



ITEM NO.	STK. CODE	PART NUMBER	DESCRIPTION	UNITS PER ASY.
1	B	322657-02	Carburetor Assembly (WT334)	1
2			. Screw, Pump Cover	1
3			. Cover, Fuel Pump	1
4			. Screw, Idle Adjustment	1
5			. Spring	1
6		①②	. Gasket, Fuel Pump	1
7		①②	. Diaphragm, Fuel Pump	1
8		①	. Screen, Fuel Inlet	1
9			. Shaft Assembly, Throttle	1
10		①	. Spring, Throttle Return	1
11			. Shutter, Throttle	1
12			. Shaft Assembly, Choke	1
13			. Shutter, Choke	1
14		①	. Screw, Shutter	2
15			. Ring, Shaft Retainer	1
16			. Lever, Throttle	1
17			. Spring, Choke Friction	1
18			. Ball, Choke Friction	1

ITEM NO.	STK. CODE	PART NUMBER	DESCRIPTION	UNITS PER ASY.
19		①	. Needle, Idle	1
20		①	. Spring, Idle Needle	1
21		①	. Needle, High	1
22		①	. Spring, High Needle	1
23		①	. Plug	1
24		①	. Ring, Screen Retainer	1
25		①	. Screen, Check Valve	1
26			. Seat Assembly, Check Valve	1
27		①	. Screw, Metering Cover	4
28			. Cover, Metering Diaphragm	1
29		①②	. Diaphragm Assembly, Metering	1
30		①②	. Gasket, Metering Diaphragm	1
31		①	. Pin, Metering Lever	1
32		①	. Lever, Metering	1
33		①	. Spring, Metering Lever	1
34		①	. Screw, Metering Lever Pin	1
35		①	. Valve, Inlet Needle	1
36		①	. Plug, Welch	1

**NOTE:** Items are shown for identification and disassembly purposes only. Components are not available separately unless a part number is listed before the part description.

① B 323673 Kit, Major Repair (A1120-WT)  
 ② B 323674 Kit, Gasket/Diaphragm (B1109-WT)

# FIGURE 6

## BAR AND CHAIN INFORMATION

BAR			CHAIN		
LENGTH	BAR TYPE	PART NUMBER	TYPE	LENGTH / DRIVE LINKS	PART NUMBER
16"	Sprocket Tip	323219-33	PMR320GLX	16" / 66	323218-33
18"		323215-33		18" / 72	323214-33
20"		323217-33		20" / 78	323216-33

## SPECIFICATIONS

ENGINE TYPE . . . . .	2 Cycle, Air Cooled	AIR GAP . . . . .	0.012-.016in. (.3-.4mm)
DISPLACEMENT . . . . .	46cc (2.8 ci)	SPARK PLUG GAP . . . . .	0.025 in. (0.635mm)
	49cc (3 ci)	CARBURETOR . . . . .	Walbro WT334
BORE (46cc) . . . . .	1.69 in. (43mm)	IGNITION . . . . .	Electronic
(49cc) . . . . .	1.74 in. (44mm)	TRANSMISSION . . . . .	Centrifugal Clutch
STROKE (46cc) . . . . .	1.26 in. (32mm)	DRY WEIGHT (PUO) . . . . .	11.9 lbs. (5.4kg)
(49cc) . . . . .	1.26 in. (32mm)	FUEL MIX . . . . .	40:1
CYLINDER . . . . .	Hard Chrome Bore	FUEL CAPACITY . . . . .	11.8 fl. oz. (349ml)
PISTON . . . . .	Aluminum	OIL CAPACITY . . . . .	22.7 fl. oz. (671ml)
OIL PUMP . . . . .	Automatic, Gear-driven	STARTER ROPE LENGTH . . . . .	41 in. (104cm)
MAXIMUM RPM (w/bar & chain) . . . . .	11,500	CLUTCH ENGAGEMENT SPEED . . . . .	3500-3800 RPM

## TORQUE VALUES

DESCRIPTION	Crankcase to Fuel/Oil Tank	Flywheel Nut	Ignition Screw	Ignition Spacer Nut	Spark Plug	Muffler Body to Cylinder	Muffler Nuts	Carburetor Boot Flange	Carburetor Flange	Crankcase to Cylinder
FASTENER P/N	217937	110961	217936	322854	62345/93018	217935	216682	219881	111105	111095
FIGURE/ITEM	1/36	3/22	3/29	3/31	3/33	3/38	3/43	3/46	3/56	3/73
TORQUE (lbs./in.)	55-60	175-185	45-50	45-50	110-120	45-50	50-55	45-50	25-30	70-80
LOCTITE	262	242	242	242	---	262	Permatex® 133A*	262	242	262

\*Anti-seize compound

LOCTITE KIT		SERVICE TOOLS	
PART NUMBER	DESCRIPTION	PART NUMBER	DESCRIPTION
322235	LOCTITE KIT	215432	PRESSURE TEST TOOL
322236	. RETAINING COMPOUND 620 (10 ml)	91424	TACHOMETER
322237	. THREAD LOCKER 242 (10 ml)	323330	IGNITION TESTER
322238	. GASKET ELIMINATOR 518 (50 ml)	217720	TORX DRIVE SET
322239	. BLACK MAX ADHESIVE 380 (1 oz)	222785	T-25 TORX DRIVE 3.5"
		111124	T-27 TORX DRIVE 3.5"

**FOR WARRANTY OR SERVICE, CONTACT THE NEAREST McCULLOCH AUTHORIZED SERVICE CENTER LISTED UNDER "SAWS" IN YOUR TELEPHONE DIRECTORY YELLOW PAGES. IF FURTHER ASSISTANCE IS REQUIRED, CALL THIS TOLL-FREE HOT LINE. PLEASE REFERENCE YOUR MODEL AND SERIAL NUMBER.**

**1-800-423-6302**

IN ARIZONA:

**1-800-221-6507**

**M-F 6:00 AM - 4:30 PM (MST)**