

MASTER ILLUSTRATED PARTS LIST

MAC 3-10E Chain Saw



May 1970

CONTENTS

	Page
Figure 1. General	2
Figure 2. Clutch Guard and Starter Assembly.	6
Figure 3. Fuel Tank Assembly	6
Figure 4. Fuel Tank Assembly	8
Figure 5. Carburetor	10
Figure 6. Carburetor	12
Figure 7. Carburetor	14
Figure 8. Electrical Components	16
Figure 9. Powerhead Assembly	18

The policy of McCulloch Corporation is one of continual improvement in design, manufacturing and engineering advancement wherever possible to assure still finer two-cycle power tools. Hence, specifications, equipment, colors, design and manufacturer's suggested list prices are subject to change without notice and McCulloch Corporation reserves the right to make such changes without prior notification or obligation to backfit or supply backfit components for units previously shipped from the factory.

This Master Illustrated Parts List gives the name, number and interchangeability between engines, of service and replacement parts which were used on or are presently available for all MAC 3-10E chain saws manufactured to date.

Information about the List and how to use it will be found on the back cover.
Read the information before you start to use the List.

 **McCULLOCH**

Copyright 1970 U.S.A. -
McCulloch Corporation

P/N 84481

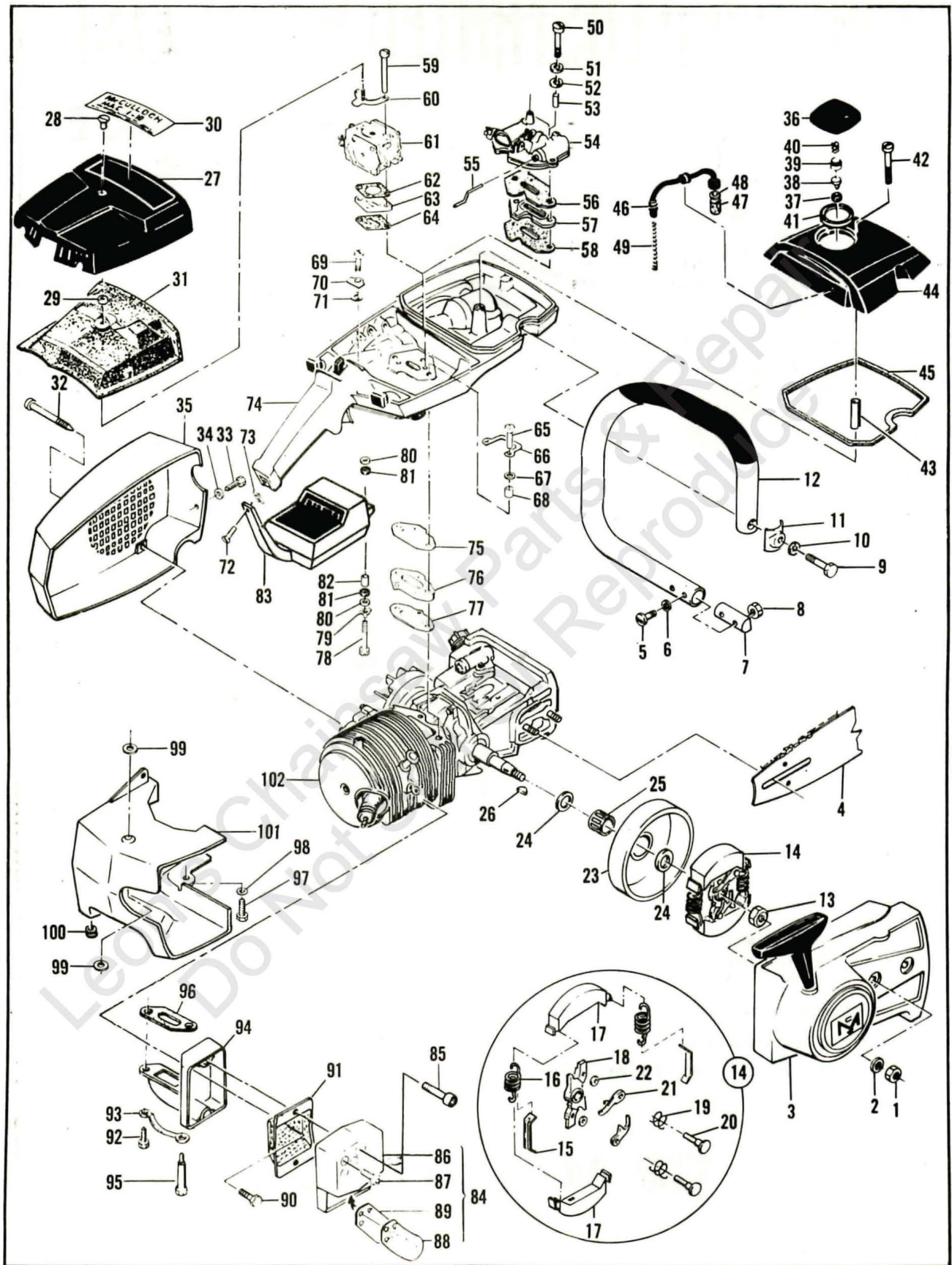


Figure 1. General

FIGURE 1. GENERAL

Item No.	Part Number	Description	Units Per Assy	Usable On Code												
MAC 3-10E Usable on Code																
<table border="1" style="width: 100%; border-collapse: collapse;"> <thead> <tr> <th style="width: 15%;">Letter</th> <th style="width: 15%;">A</th> <th style="width: 15%;">B</th> <th style="width: 15%;">C</th> <th style="width: 15%;">D</th> <th style="width: 15%;">E</th> </tr> </thead> <tbody> <tr> <td>Serial Numbers</td> <td>Without Prefix</td> <td>Prefixed 1-</td> <td>Prefixed 2-</td> <td>Prefixed 3-</td> <td>Prefixed 12-</td> </tr> </tbody> </table>					Letter	A	B	C	D	E	Serial Numbers	Without Prefix	Prefixed 1-	Prefixed 2-	Prefixed 3-	Prefixed 12-
Letter	A	B	C	D	E											
Serial Numbers	Without Prefix	Prefixed 1-	Prefixed 2-	Prefixed 3-	Prefixed 12-											
1*	110454	Nut - Hex 5/16-24	2	All												
2	100440	Washer - 5/16	2	All												
3		Clutch Guard Assy (see Figure 2)		All												
4		Bar and Chain Assy (see Figure)		All												
5	102761	Screw - Hex hd 10-24 x 7/8	2	All												
6	100352	Washer - #10	2	All												
7	61678	Plug - Nut retainer	1	All												
8	101326	Nut - Hex 10-24	2	All												
9	105187	Screw - Skt hd 1/4-20 x 1-1/8	1	A,B,C,D												
	102130	Screw - Hex hd 1/4-20 x 1-1/2	1	E												
10	105043	Lockwasher - 1/4	1	B,C,D												
	100153	Lockwasher - 1/4	1	E												
11	100004	Washer - 1/4	1	A,B,C,D												
	63484	Clamp	1	E												
12	67372	Frame and Grip Assy	1	A,B,C,D												
	66315	Frame and Grip Assy	1	E												
13	103746	Nut - Hex 3/8-24	1	All												
14	67148	Clutch Assy	1	All												
15	64583	. Retainer - Clutch spring	2	All												
16	63999	. Spring - Clutch	2	A,B,C,D												
	66384	. Spring - Clutch	2	E												
17	67233	. Shoe - Clutch	2	All												
18	67149	. Rotor Assy - Clutch	1	All												
19	68837	. Spring - Pawl	2	All												
20	67112	. Rivet - Pawl	2	All												
21	64857	. Pawl - Starter	2	All												
22	65473	. Washer - Special	2	All												
23	65370	Kit - Sprocket and Drum Assy	1	All												
24	61692	. Shim - Sprocket	2	All												
25	110330	Bearing - Sprocket	1	All												
26	103879	Key - Woodruff	1	All												
27	62117	Cover Assy - Air cleaner	1	A												
	65866	Cover Assy - Air cleaner	1	B,C,D												
	66597	Cover Assy - Air cleaner	1	E												
28	62434	. Nut - Cover	1	A												
	65813	. Nut - Cover	1	B,C,D												
	66290	. Nut - Cover	1	E												
29	66665	. Spacer - Nut	1	E												
30	65460	Nameplate	1	A,B,C,D												
	67436	Nameplate	1	E												
31	62077	Screen - Air filter	1	A												
	66774	Screen - Air filter	1	B,C,D												
	68520	Screen - Air filter	1	E												
32	64626	Screw - Special	3	All												
33	105348	Screw - Hex hd 10-24 x 1/2 (SEMS)	1	E												
34	110264	Washer - #10	1	E												
35	67297	Housing - Fan	1	All												
36	68531	Cap Assy - Fuel	1	All												
37	68533	. Plug	1	All												
38	63041	. Valve	1	All												
39	62316	. Guide	1	All												
40	63040	. Spring	1	All												
41	69767	. Gasket	1	All												
42	110334	Screw - Oval hd 12-24 x 1-3/4	1	A,B,C,D												
	110402	Screw - Oval hd 12-24 x 2-3/8	1	E												

This list is continued on next page

FIGURE 1. GENERAL (CONT.)

Item No.	Part Number	Description	Units Per Assy	Usable On Code
43	69686	Spacer - Screw	1	E
44	63656	Cover - Fuel tank	1	A,B,C,D
	63288	Cover - Fuel tank	1	E
45	69345	Gasket - Cover	1	All
46	64848	Hose Assy - Fuel	1	All
47	63932	Filter - Fuel	1	All
48	100440	Washer	1	All
49	67944	Spring - Hose stiffener	1	E
50	103355	Screw - Hex hd 10-24 x 1-7/8	2	A
	103124	Screw - Hex hd 10-24 x 2	2	B,C,D
51	64856	Washer - Special	2	A,B,C,D
52	68203	Washer - Insulator	2	A,B,C,D
53	62327A	Sleeve - Insulator	2	A
	65726	Sleeve - Insulator	2	B,C,D
54		Carburetor Assy (see Figure 5)		A
		Carburetor Assy (see Figure 6)		B,C,D
55	62066A	Rod - Primer	1	A
	65604	Rod - Primer	1	B,C,D
56	65672	Gasket - Carburetor	1	A,B,C,D
57	65821	Insulator - Carburetor	1	B,C,D
58	65672	Gasket - Insulator	1	B,C,D
59	110551	Screw - Hex hd 10-24 x 2-1/8	2	E
60	66681	Bracket Assy	1	E
61		Carburetor Assy (see Figure 7)		E
62	68132	Gasket - Carburetor	1	E
63	66678	Spacer - Carburetor	1	E
64	68131	Gasket - Spacer	1	E
65	110553	Screw - Hex hd 10-24 x 1-3/8	2	E
66	68582	Lockplate	1	E
67	100003	Washer - #10	2	E
68	66189	Sleeve	2	E
69	102290	Screw - Hex hd 10-24 x 1-1/8	1	A,B,C,D
	110516	Screw - Hex hd 10-24 x 1-1/8	1	E
70	63475	Lockplate	1	All
71	68203	Washer - Insulator	1	A,B,C,D
	64856	Washer - #10	1	E
72	110223	Screw - Oval hd 10-24 x 5/8	1	All
73	66672	Cushion - Handle brace	1	E
74		Fuel Tank Assy (see Figure 3)		A,B,C,D
		Fuel Tank Assy (see Figure 4)		E
75	68130	Gasket - Fuel tank	1	All
76	63396	Insulator - Fuel tank	1	A,B,C,D
	66659	Insulator - Fuel tank	1	E
77	68130	Gasket - Insulator	1	All
78	102433	Screw - Hex hd 10-24 x 1-5/8	1	A,B
	110503	Screw - Hex hd 10-24 x 1-5/8	1	C
	102765	Screw - Hex hd 10-24 x 1-3/4	1	D,E
79	47660	Lockplate	1	A
	28052	Lockplate	1	B,C
	66673	Lockplate	1	D,E
80	105831	Washer - Steel	2	D,E
81	71017	Washer - Rubber	2	D,E
82	66674	Sleeve - Handle brace	1	D,E
83		Handle Brace and Battery Assy (see Figure 8)		All
84	68191	Kit - Spark arrester	1	All
85	110473	Screw - Skt hd 10-24 x 1-5/8	2	All
86	65532	Cover and Valve Assy	1	All
87	110472	Screw - Skt hd 8-32 x 5/16	3	All
88	83069	Stop - Reed	1	All
89	64785	Valve - Reed	1	All
90	110529	Screw - Hex hd 10-24 x 1/2	1	All
91	62379B	Baffle	1	All
92	110506	Screw - Hex hd 10-24 x 5/8	1	All

FIGURE 1. GENERAL (CONT)

Item No.	Part Number	Description	Units Per Assy	Usable On Code
93	67922	. Lockplate	1	All
94	83106	. Kit - Body and Duct Assy	1	All
95	68187	. . . Screw - Special	1	All
96	68149	. Gasket - Spark arrester	1	All
97	105025	Screw - Hex hd 12-24 x 9/16	1	All
98	102523	Washer - 1/4	1	All
99	68581	Insulator - Shroud	2	All
100	101230	Grommet - Shroud	1	All
101	67377	Shroud	1	All
102		Powerhead Assy (see Figure 9)		All

Master Illustrated Parts List, P/N 84481, supersedes and cancels all previous lists issued for the MAC 3-10E saw. Discard the following lists:

IPL 65328 and

Parts list sheet 65872 covering saws having serial numbers without prefix.

Parts list sheet 66110 covering saws having serial numbers prefixed 1-.

Parts list sheet 66716 covering saws having serial numbers prefixed 2-.

Parts list sheet 66831 covering saws having serial numbers prefixed 3-.

IPL 67437 covering saws having serial numbers prefixed 12-.

SERVICE SPECIFICATIONS

Spark Plug Gap	-----	0.025 in.
Lamination Gap	-----	0.010 to 0.015 in.
Breaker Point Gap	-----	0.018 in.
Torque Values		
Flywheel Nut	-----	240 to 300 inch-pounds.
Clutch Nut	-----	160 to 170 inch-pounds.
Connecting Rod Screws	-----	65 to 70 inch-pounds.

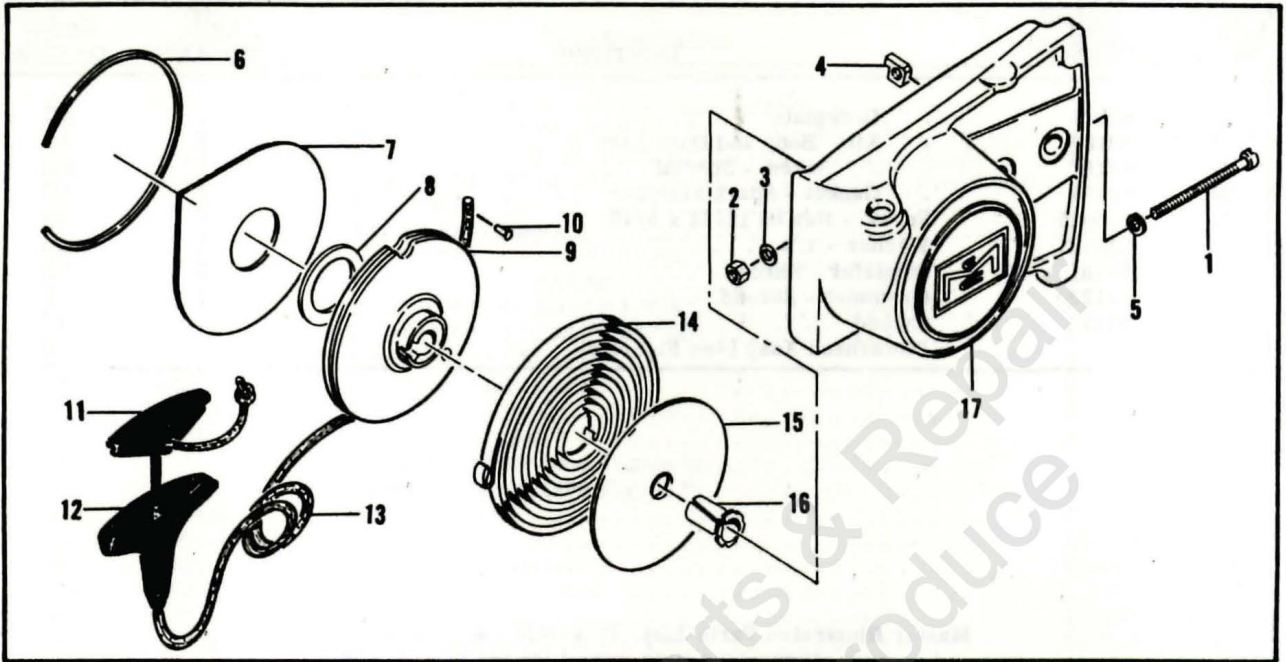


Figure 2. Clutch Guard and Starter Assembly

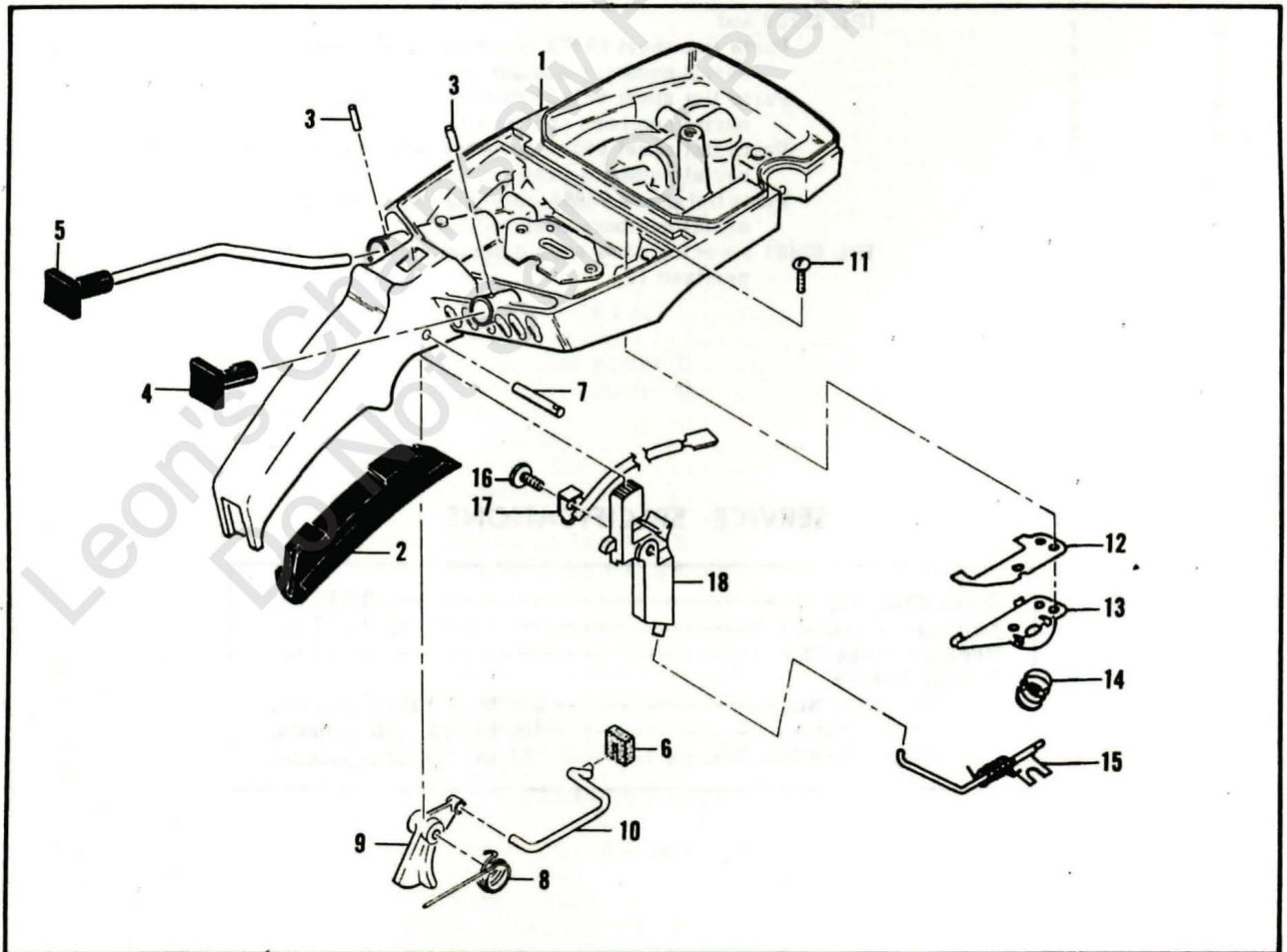


Figure 3. Fuel Tank Assembly

FIGURE 2. CLUTCH GUARD AND STARTER ASSEMBLY

Item No.	Part Number	Description	Units Per Assy	Usable On Code		
MAC 3-10E Usable on Code						
	Letter	A	B	C	D	E
	Serial Numbers	Without Prefix	Prefixed 1-	Prefixed 2-	Prefixed 3-	Prefixed 12-
1	83850	Clutch Guard Assy	1	All		
2	102144	. Screw - Bar adjusting	1	All		
3	102067	. Nut - Hex 10-24	1	All		
4	110387	. Washer - Wave	1	All		
5	61705	. Nut - Bar adjusting	1	All		
6	101174	. Washer - #10	1	All		
7	67205	. Retainer - Shield	1	All		
8	63985	. Shield - Dust	1	All		
9	63986	. Washer - Thrust	1	All		
10	83651	. Drum - Starter	1	All		
11	110470	. Rivet - Rope	1	All		
12	62191A	. Insert - Handle	1	All		
13	62190A	. Handle - Starter	1	All		
14	69964	. Rope - Starter	1	All		
15	68626	. Spring - Rewind	1	All		
16	63987	. Shield - Spring	1	All		
17	61635A	. Bushing - Nyliner	1	All		
18	67207	. Guard - Clutch	1	All		

FIGURE 3. FUEL TANK ASSEMBLY

Item No.	Part Number	Description	Units Per Assy	Usable On Code		
MAC 3-10E Usable on Code						
	Letter	A	B	C	D	E
	Serial Numbers	Without Prefix	Prefixed 1-	Prefixed 2-	Prefixed 3-	Prefixed 12-
1	66648	Fuel Tank Assy	1	A,B,C,D		
2	64872	Grip - Handle	1	A,B,C,D		
3	105673	Pin - Roll 3/32 x 9/16	2	A,B,C,D		
4	66194	Button - Primer	1	A,B,C,D		
5	64871	Button and Rod Assy - Oiler	1	A,B,C,D		
6	67989	Seal - Throttle rod	1	A,B,C,D		
7	110378	Pin - Roll 3/16 x 15/16	1	A,B,C,D		
8	65734	Spring - Throttle return	1	A,B,C,D		
9	67224	Trigger - Throttle	1	A,B,C,D		
10	62970C	Rod - Throttle	1	A		
11	65816	Rod - Throttle	1	B,C,D		
12	105249	Screw - Rd hd 8-32 x 3/8 (SEMS)	2	A,B,C,D		
13	64621	Shield - Bracket	1	A,B,C,D		
14	64721	Bracket - Lever Assy	1	A,B,C,D		
15	69687	Spring - Valve	1	A,B,C,D		
16	69811	Lever - Compression release	1	A,B,C,D		
17	110469	Screw - Pan hd 8-32 x 5/16 s/t	1	A,B,C,D		
18	65873	Wire Assy - Stop switch	1	A,B,C,D		
19	67210	Button Assy - Control	1	A,B,C,D		

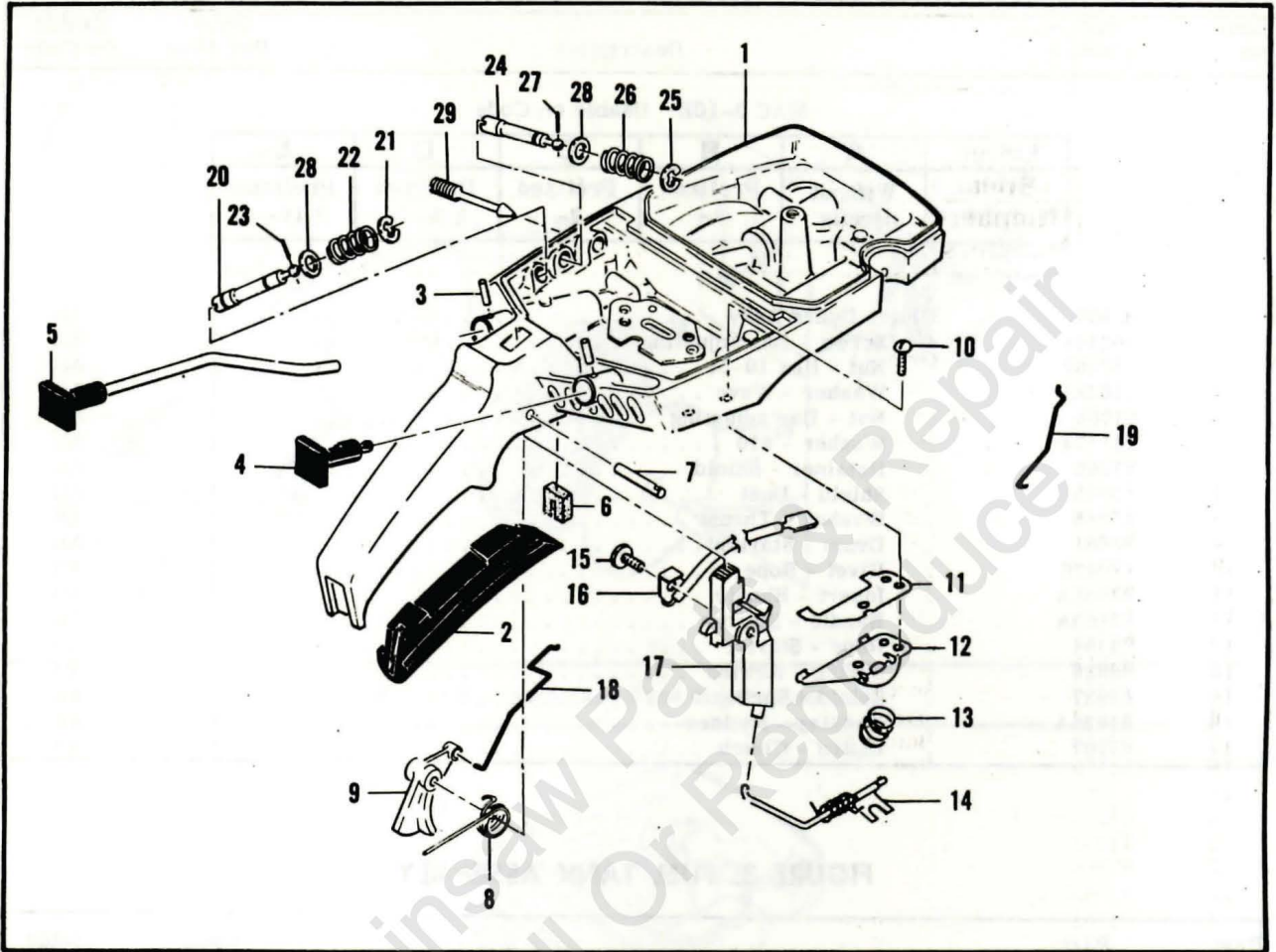


Figure 4. Fuel Tank Assembly

Leon's Chainsaw Parts & Repair
Do Not Sell Or Repair

FIGURE 4. FUEL TANK ASSEMBLY

Item No.	Part Number	Description	Units Per Assy	Usable On Code		
MAC 3-10E Usable on Code						
	Letter	A	B	C	D	E
	Serial Numbers	Without Prefix	Prefixed 1-	Prefixed 2-	Prefixed 3-	Prefixed 12-
1	68683	Fuel Tank Assy	1			E
2	64872	Grip - Handle	1			E
3	105873	Pin - Roll 3/32 x 9/16	2			E
4	68517	Button - Choke	1			E
5	64871	Button and Rod Assy - Oiler	1			E
6	67989	Seal - Throttle rod	1			E
7	110378	Pin - Roll 3/16 x 15/16	1			E
8	65734	Spring - Throttle return	1			E
9	67224	Trigger - Throttle	1			E
10	105249	Screw - Rd hd 8-32 x 3/8 (SEMS)	2			E
11	64621	Shield - Bracket	1			E
12	64721	Bracket - Lever	1			E
13	69687	Spring - Valve	1			E
14	69811	Lever Assy - Compression release	1			E
15	110469	Screw - Pan hd 8-32 x 5/16 s/t	1			E
16	65873	Wire Assy - Stop switch	1			E
17	67210	Button Assy - Control	1			E
18	68170	Rod - Throttle	1			E
19	67355	Rod - Choke	1			E
20	68102	Extension Assy - High speed needle	1			E
21	110512	Ring - Retaining	1			E
22	67363	Spring	1			E
23	110509	Pin - Groove	1			E
24	68101	Extension Assy - Idle needle	1			E
25	110512	Ring - Retaining	1			E
26	67363	Spring	1			E
27	110509	Pin - Groove	1			E
28	67292	Washer	2			E
29	67271	Screw - Idle adjustment	1			E

Leon's Do Not

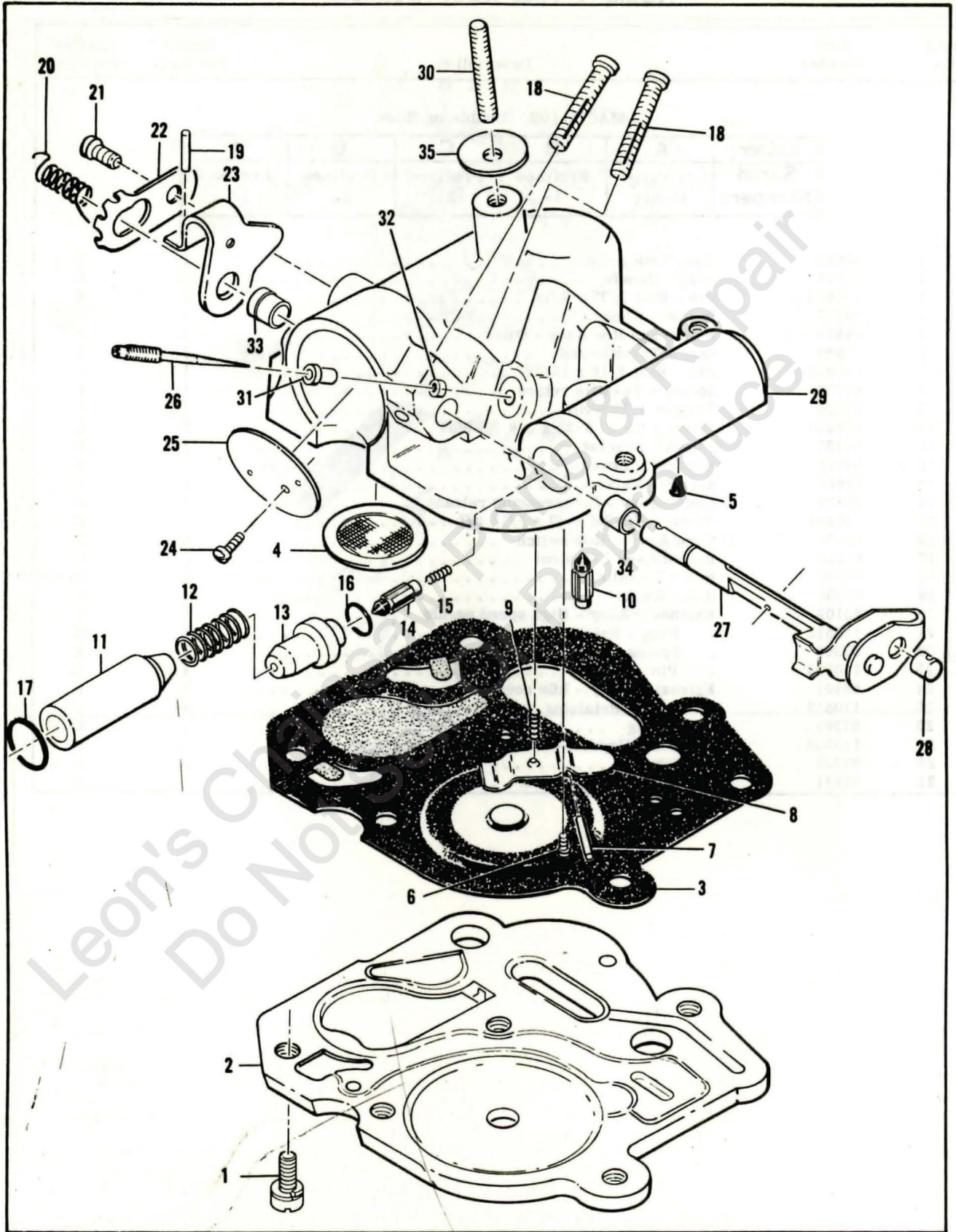


Figure 5. McCulloch Single Needle Carburetor Assembly

FIGURE 5. CARBURETOR ASSEMBLY

Item No.	Part Number	Description	Units Per Assy	Usable On Code		
MAC 3-10E Usable on Code						
	Letter	A	B	C	D	E
	Serial Numbers	Without Prefix	Prefixed 1-	Prefixed 2-	Prefixed 3-	Prefixed 12-
	*66564	Carburetor Assy (McCulloch Single Needle) . . .	1			A
1	110397	. Screw - Pan hd 8-32 x 7/16 (SEMS)	5			A
2	65597	. Plate - Carburetor base	1			A
3	67357	. Diaphragm Assy - Pump	1			A
4	55690B	. Seal - Capillary	1			A
5	63041	. Valve - Primer	1			A
6	104728	. Screw - Bind hd 6-32 x 1/4	1			A
7	110337	. Pin - Inlet lever	1			A
8	62310	. Lever - Inlet	1			A
9	62923A	. Spring - Inlet lever	1			A
10	63038	. Valve - Inlet needle	1			A
11	62308A	. Plunger - Primer	1			A
12	11086	. Spring - Plunger	1			A
13	63037	. Seat - Primer valve	1			A
14	63038	. Valve - Primer needle	1			A
15	63039	. Spring - Needle valve	1			A
16	101056	. "O" Ring	1			A
17	105606	. "O" Ring	1			A
18	62971	. Screw - Long locking adjustment	2			A
19	104245	. Pin - Roll 1/16 x 1/2	1			A
20	62939A	. Spring - Idle governor	1			A
21	103934	. Screw - Pan hd 6-32 x 1/4 (SEMS)	1			A
22	62938	. Clip - Throttle shaft	1			A
23	62343A	. Lever - Throttle	1			A
24	104814	. Screw - Pan hd 4-40 x 1/4 (SEMS)	1			A
25	62290A	. Plate - Throttle	1			A
26	62976A	. Needle - Metering	1			A
27	62291A	. Shaft Assy - Throttle	1			A
28	62975	. Swivel - Needle	1			A
29	63019B	. Body Assy - Carburetor	1			A
30	62433B	. Stud - Carburetor	1			A
31	62295D	. Orifice - Air	1			A
32	66569	. Orifice - Fuel	1			A
33	62288A	. Bushing - Throttle shaft	1			A
34	62368	. Bushing - Throttle shaft	1			A
35	67062	. Seal - Air cleaner stud	1			A

* Same as Carburetor Assembly, P/N 66503 (Figure 7), except includes Stud, P/N 62433B, and Primer Rod, P/N 65851.

MCCULLOCH SINGLE NEEDLE CARBURETOR ADJUSTMENT

1. Turn Lo Speed screw counterclockwise until it no longer touches stop and butterfly can be completely closed.
2. Hold finger against closed butterfly and turn Lo Mix needle clockwise until butterfly starts to open. Turn the needle counterclockwise three turns.
3. Hold finger against closed butterfly and turn Lo Speed screw clockwise until butterfly starts to open. Turn the screw one half turn more.
4. Turn the Lo Mix needle in or out (leaner or richer) to obtain a smooth rapid acceleration. Roll the engine right and left, bar up and bar down. Check for smooth idle in all positions and adjust Lo Mix needle as necessary.
5. Set tension on the idle governor spring so that the engine idles smoothly in all positions and after any change in position. If chain moves after position change, reduce tension.
6. Adjust Hi Mix screw for maximum power under load. Make sure that when trigger is released the engine does not speed up before returning to idle. Turn screw clockwise until engine slows down immediately after trigger release. DO NOT TOUCH LO MIX NEEDLE. ADJUST FOR HIGH SPEED OPERATION WITH HI MIX SCREW ONLY.
7. With throttle in wide open position, adjust Hi Mix screw to set butterfly in horizontal position. Now turn screw clockwise until butterfly just starts to close.
8. Set tension on idle governor spring to hold butterfly slightly open.

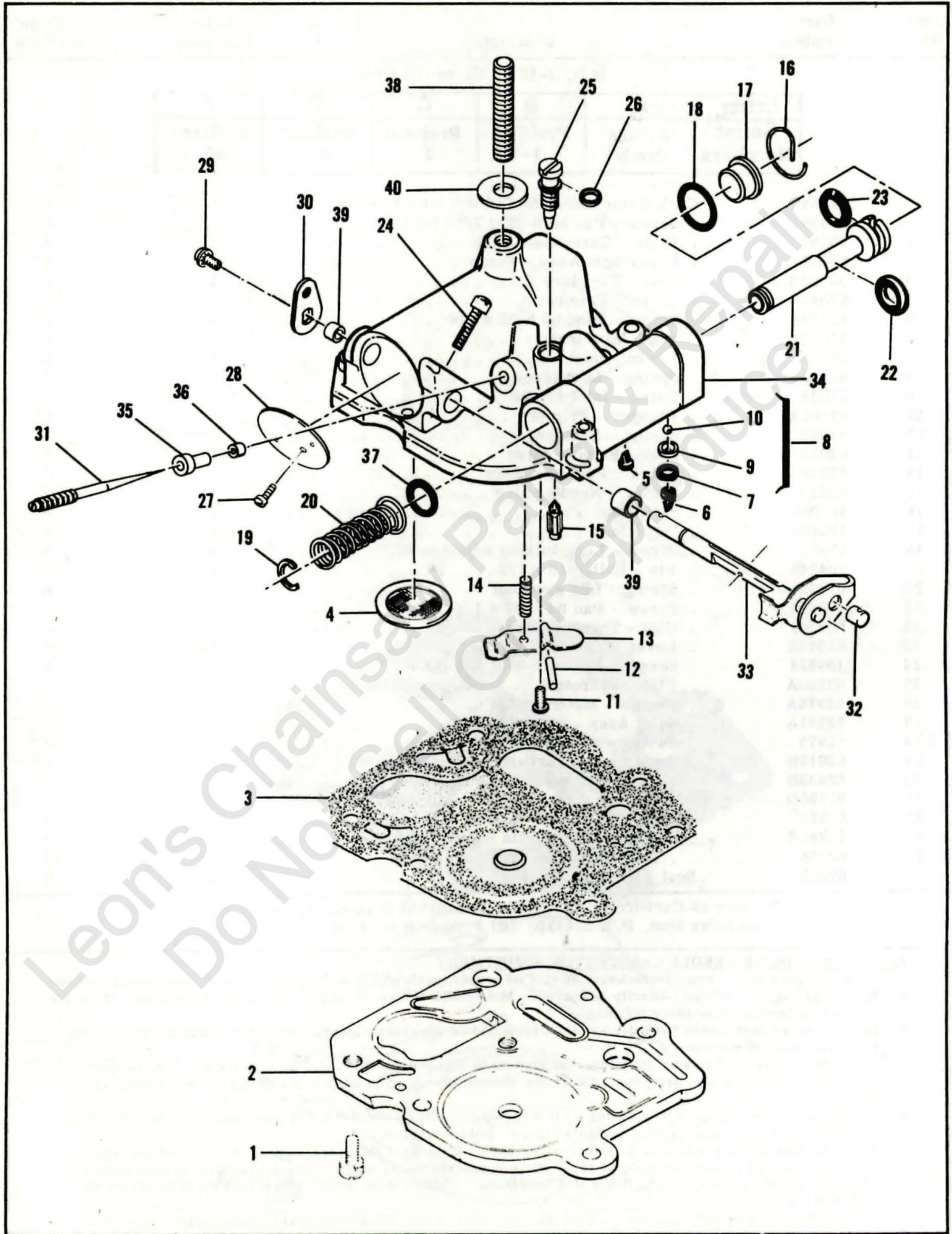


Figure 6. McCulloch Double Needle Carburetor Assembly

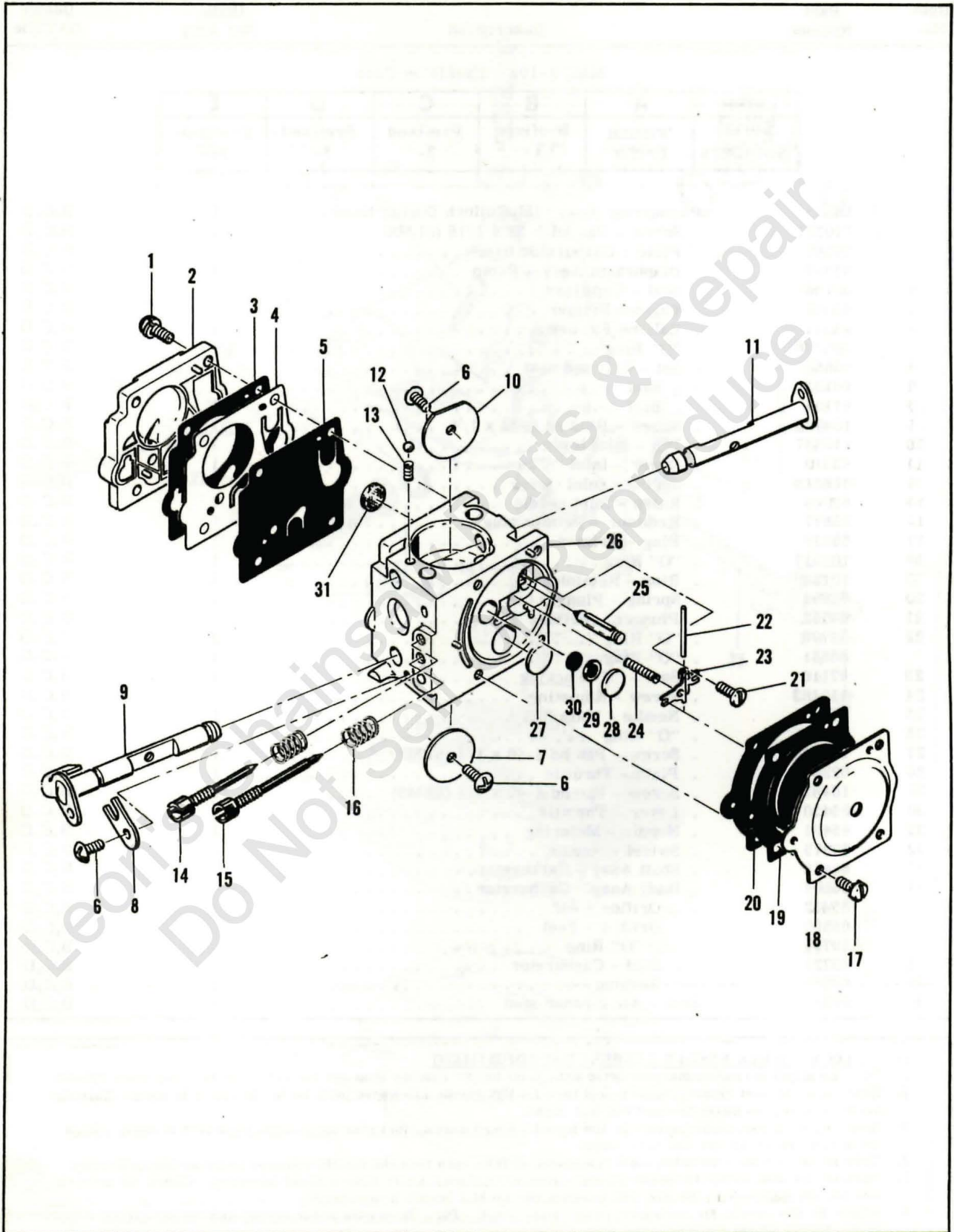


Figure 7. McCulloch SDC-2 Carburetor Assembly

FIGURE 7. CARBURETOR ASSEMBLY

Item No.	Part Number	Description	Units Per Assy	Usable On Code		
MAC 3-10E Usable on Code						
	Letter	A	B	C	D	E
	Serial Numbers	Without Prefix	Prefixed 1-	Prefixed 2-	Prefixed 3-	Prefixed 12-
1	67379	Carburetor Assy (McCulloch SDC-2)	1			E
	67501	. Screw - Pump cover	4			E
2	83760	. Cover - Pump	1			E
3	*67495	. Gasket - Cover	1			E
4	*67498	. Diaphragm - Check valve	1			E
5	*83114	. Diaphragm - Fuel pump	1			E
6	*47690	. Screw - Plate	3			E
7	67487	. Plate - Throttle	1			E
8	67489	. Clip - Shaft	1			E
9	67486	. Shaft Assy - Throttle	1			E
10	67490	. Plate - Choke	1			E
11	67488	. Shaft Assy - Choke	1			E
12	*100302	. Ball - Choke friction	1			E
13	*67504	. Spring - Choke	1			E
14	*67506	. Needle - High speed	1			E
15	*67505	. Needle - Idle	1			E
16	*67502	. Spring - Needle	2			E
17	70798	. Screw - Diaphragm cover	4			E
18	83761	. Cover - Diaphragm	1			E
19	*67499	. Diaphragm - Metering	1			E
20	*67496	. Gasket - Diaphragm	1			E
21	*67500	. Screw - Lever pin	1			E
22	*67508	. Pin - Lever	1			E
23	*67509	. Lever - Metering	1			E
24	*67503	. Spring - Lever	1			E
25	*67491	. Valve - Needle	1			E
26	67483	. Body Assy - Carburetor	1			E
27	*71690	. Plug - 3/8	1			E
28	*69506	. Plug - 5/16	1			E
29	69203	. Seat Assy	1			E
30	69204	. Valve	1			E
31	*67507	. Screen - Fuel	1			E
	*67482	Gasket Set				
	67481	Repair Kit				

*Indicates parts included in Repair Kit, P/N 67481

McCULLOCH SDC-2 CARBURETOR ADJUSTMENT

- Carefully turn both the high speed and idle needles clockwise until resistance is felt, then turn both needles counterclockwise one full turn.
- With engine warmed up, adjust the idle speed screw in or out until the engine idles just below clutch engagement speed.
- Adjust the idle mixture needle in or out (leaner or richer) to obtain smooth, rapid acceleration every time without faltering. If necessary, readjust the idle speed screw.
- Adjust the high speed mixture needle for maximum power under load. Turn the needle in for leaner and out for richer mixture. Do not use any leaner setting than necessary to obtain smooth, even running when cutting wood.

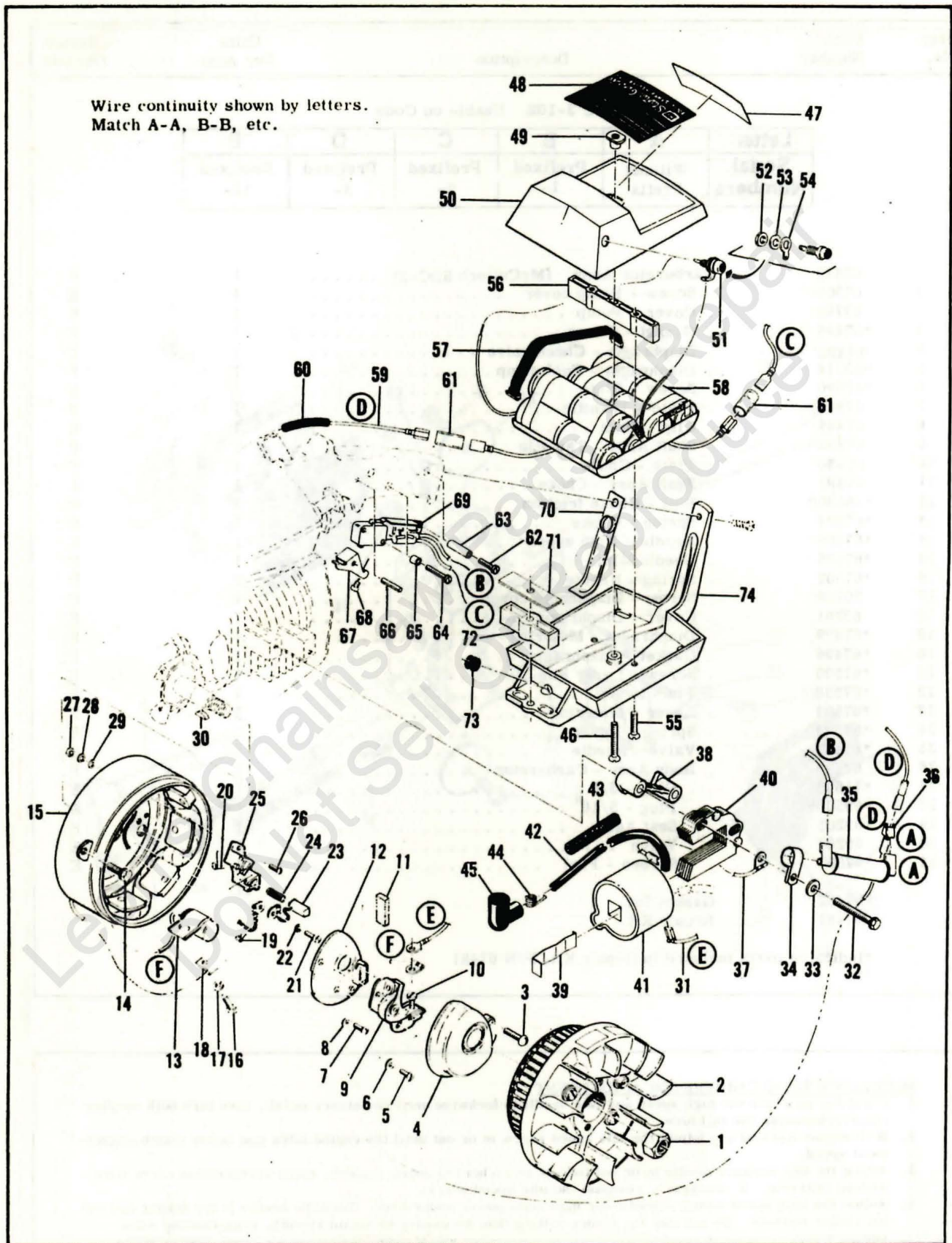


Figure 8. Electrical Components

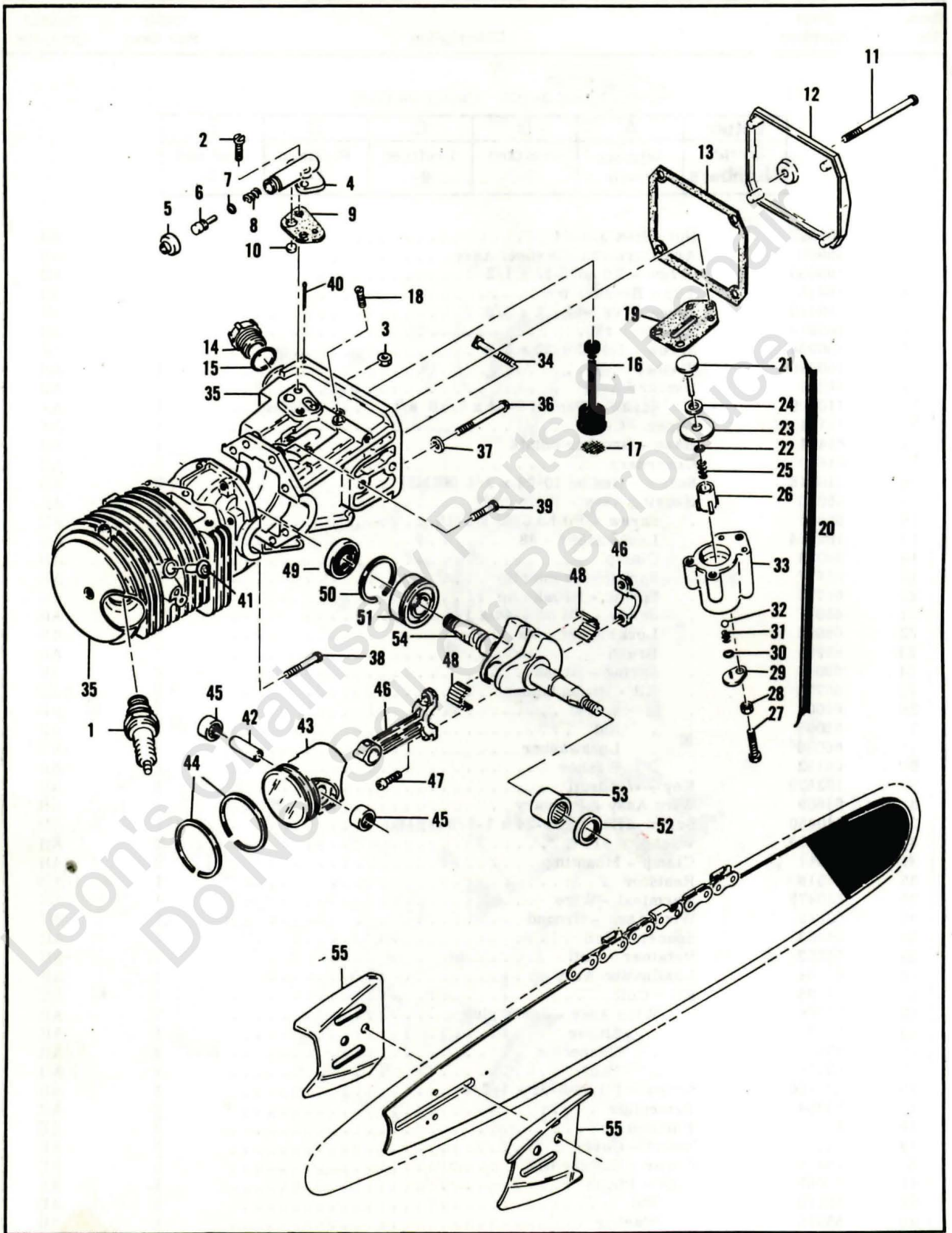


Figure 9. Powerhead Assembly

FIGURE 9. POWERHEAD ASSEMBLY (CONT.)

Item No.	Part Number	Description	Units Per Assy	Usable On Code
26	62227	. Sleeve - Adjustment	1	All
27	110386	. Screw - Hex hd 8-32 x 1	1	All
28	100251	. Nut - Hex 8-32	1	All
29	63858	. Cover Assy - Valve	1	All
30	106104	. "O" Ring	1	All
31	62885A	. Spring - Valve	1	All
32	102809	. Ball	1	All
33	83128	. Body Assy - Pump	1	All
34	62065	Bolt - Bar mounting	2	All
35	67216	Crankcase Assy	1	All
36	62105	. Screw Assy - Sealing	4	All
37	62842	. Washer - Sealing	4	All
38	110618	. Screw Assy - Hex hd 8-32 x 1-3/8	1	All
39	110288	. Screw Assy - Hex hd 8-32 x 3/4	3	All
40	100010	. Pin - Cotter	1	All
41	83166	. Valve - Compression release	1	All
42	61649	Pin - Piston	1	All
43	69212	Piston Assy	1	All
44	62814	. Ring Set - Piston	1	All
45	103512	. Bearing - Needle	2	All
46	65401	Connecting Rod Assy	1	All
47	61627A	. Screw - Skt hd special	2	All
48	63225	. Roller - Needle (set of 20)	1	All
49	65746	Oil Seal	1	All
50	63464	Ring - Snap	1	All
51	63429B	Bearing - Ball	1	All
52	65747	Oil Seal	1	All
53	104357	Bearing - Needle	1	All
54	63336	Crankshaft	1	All
55	64325	Plate - Bar protector	2	All

ACCESSORIES

Item No.	Part Number	Description	Units Per Assy	Usable On Code
69210		Piston Assy 0.020 in. oversize		
62813		. Ring Set - Piston 0.020 in. oversize		
103512		. Bearing - Needle (2)		
69211		Piston Assy 0.030 in. oversize		
62812		. Ring Set - Piston 0.030 in. oversize		
103512		. Bearing - Needle (2)		
63432		Spark Plug - AC CS 42T		
65778		Spark Plug - AC CS 41T		
65325		Baffle - Spark arrester (alternate)		
69058		Kit - Wrap-around frame		
63341A		Kit - Spike		
63746		Scrench		
62827		Wrench - Combination		

Leon's Chainsaw Parts & Repair
Do Not Sell Or Reproduce

MAC 3-10E

40:1 TWO-CYCLE MOTOR OIL

Reduces smoke, carbon and engine wear.



6 oz. can #78960
6-pack #78961
16 oz. can #78963
6-pack #78964
1 qt. bottle #110626

CHAIN, BAR AND SPROCKET OIL

Specially designed for extra lubrication of bars and chains.



1 qt. bottle #110631
Case of 24 #110632

BAR GUARDS

Protect bar and chain from accidental damage.



A B
Black Polyvinylchloride

(A) for wide bars #56927

(B) narrow bars #64930



C D
Rigid Yellow Plastic

(C) MAC 10-16, 20" #66544

(D) PM6-12, 16" #83124

LOCQUIC AND

Primer. Cleans, degreases, and accelerates curing.

7-1/2 oz. spray can. #69794



LOCTITE

Sealant, bonding agent

10cc plastic bottle #67537



SPRAY PAINT

Black

12 oz. can #103503
Case of 12 #103400



Yellow

12 oz. can #102249
Case of 12 #102464

STARTER ROPE

Solid, braided nylon

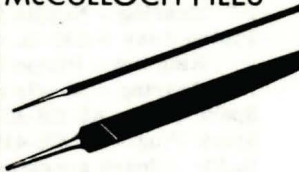






100' spool

#36825

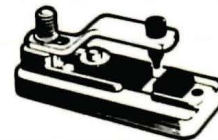
CHAIN SHARPENING TOOLS

The ● shows which tools are used on chains

	S-25	SM-57	S-40	S-80	S-90
McCULLOCH FILES					
 1/8" round	●				
5/32" round	●				
3/16" round	●				
7/32" round			●		
1/4" round				●	
9/32" round					●
8" flat	●	●	●	●	●
6" flat safety	●	●	●	●	●
FILE GUIDE & FILE					
 #67750 (1/8" round)	●				
#60950 (7/32" round)			●		
(Also holds 3/16 and 1/4" round)				●	
					
DEPTH GAUGE TOOLS					
 #56241 .045-.060"				●	●
#64198 .035-.060"				●	●
#64359 .045-.050"				●	●
#67688 .015-.020"	●			●	●
#67680 .025-.030"	●			●	●
FILE-N-JOINT Assures correct filing angle, height.					
 #61034	●	●	●	●	●

"BREAK ALL" CHAIN BREAKER

Required when repairing chain.



#61753
Instructions included.

PRESSURE TEST TOOLS

For leakage check of crankcase, fuel system.



Basic unit #62849

The information contained in this Master Illustrated Parts List is based on original Illustrated Parts Lists, Engineering Records and the Master Parts Price List and is accurate to the best of our knowledge.

Each chain saw model is given a code letter. Whenever the code letter appears in the right hand column, the part is used on the engines of the model for which the code letter stands. When a part is used on all models covered in the Master Illustrated Parts List, the word "All" appears in the right-hand column instead of the code letters.

Names of parts have been checked and made to agree with the names given in the Master Parts Price List except in a very few cases where additional nomenclature was required.

The illustrations of the individual parts do not necessarily picture all the differences between parts with the same item number because the illustrations would be too complicated for use if they did. Instead, the illustration shows a representative part for each item number.



McCULLOCH



● MANUFACTURING ● SALES ● SERVICE ●

McCULLOCH CORPORATION

6101 WEST CENTURY BLVD., LOS ANGELES, CALIFORNIA 90045

INTERNATIONAL DIVISIONS:

LOS ANGELES, CALIF., P. O. BOX 45466

HONG KONG, B. C. C.: G. P. O. BOX 879

McCULLOCH OF CANADA LTD.

6338 VISCOUNT ROAD, MALTON, ONTARIO, CANADA

McCULLOCH OF EUROPE, N. V.

ANTOON SPINOYSTRAAT, 5, B-2800 MECHELEN, BELGIUM

McCULLOCH OF AUSTRALIA PTY., LTD.

P.O. BOX 223, SEVEN HILLS, N.S.W. 2147, AUSTRALIA