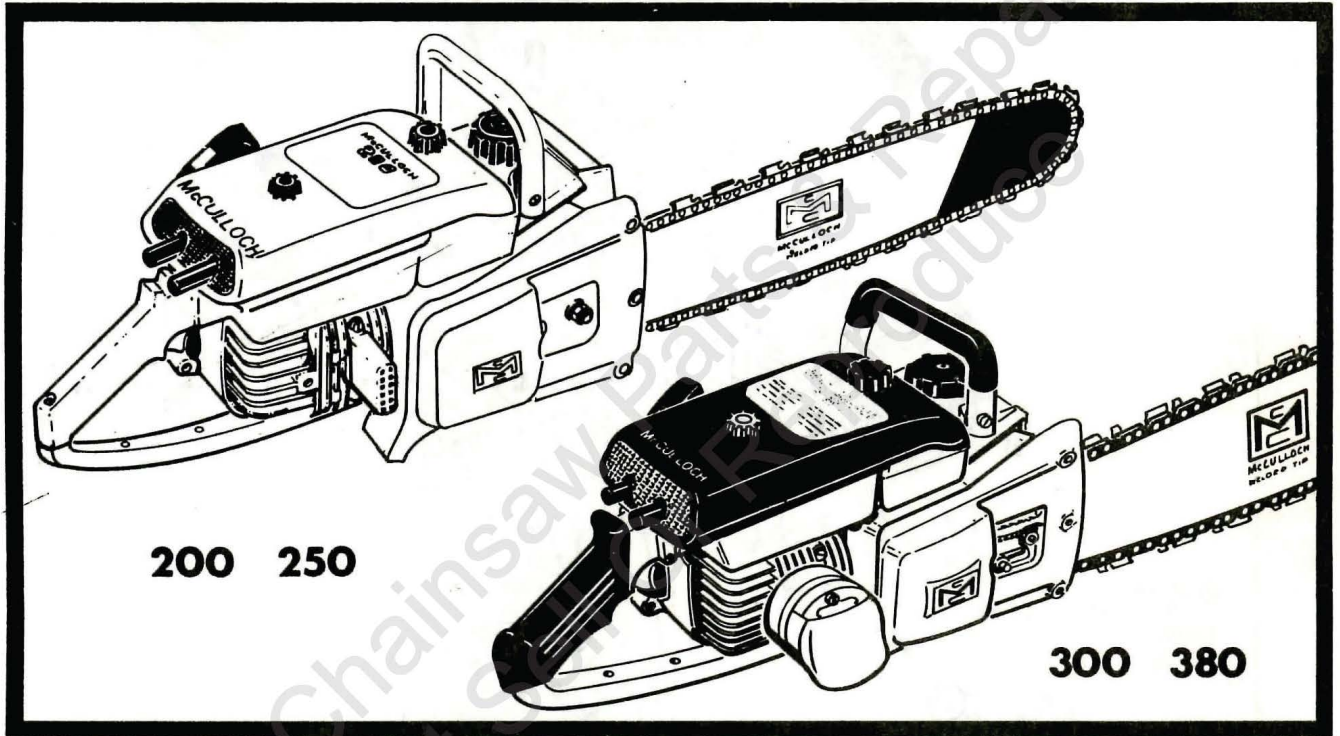


JUNE 1968

200/300 SERIES ENGINES

# MASTER ILLUSTRATED PARTS LIST



This Master Illustrated Parts List gives the name, number and interchangeability between engines, of service and replacement parts which were used on or are presently available for installation on the listed chain saw models. Information about the List and how to use it will be found on the back cover. Read the information before you start to use the List.

	Page		Page
Figure 1. Right Hand Side Elements . . . . .	2	Figure 6. Tillotson Carburetor . . . . .	12
Figure 2. Left Hand Side Elements . . . . .	4	Figure 7. McCulloch Carburetor . . . . .	14
Figure 3. Starter and Crankcase Cover . . . . .	6	Figure 8. Powerhead . . . . .	16
Figure 4. Fuel and Oiler Tanks . . . . .	8	Figure 9. Clutch Guard . . . . .	18
Figure 5. Airbox and Reed Valve . . . . .	10		

 **McCULLOCH CORPORATION**

# 200/300 SERIES

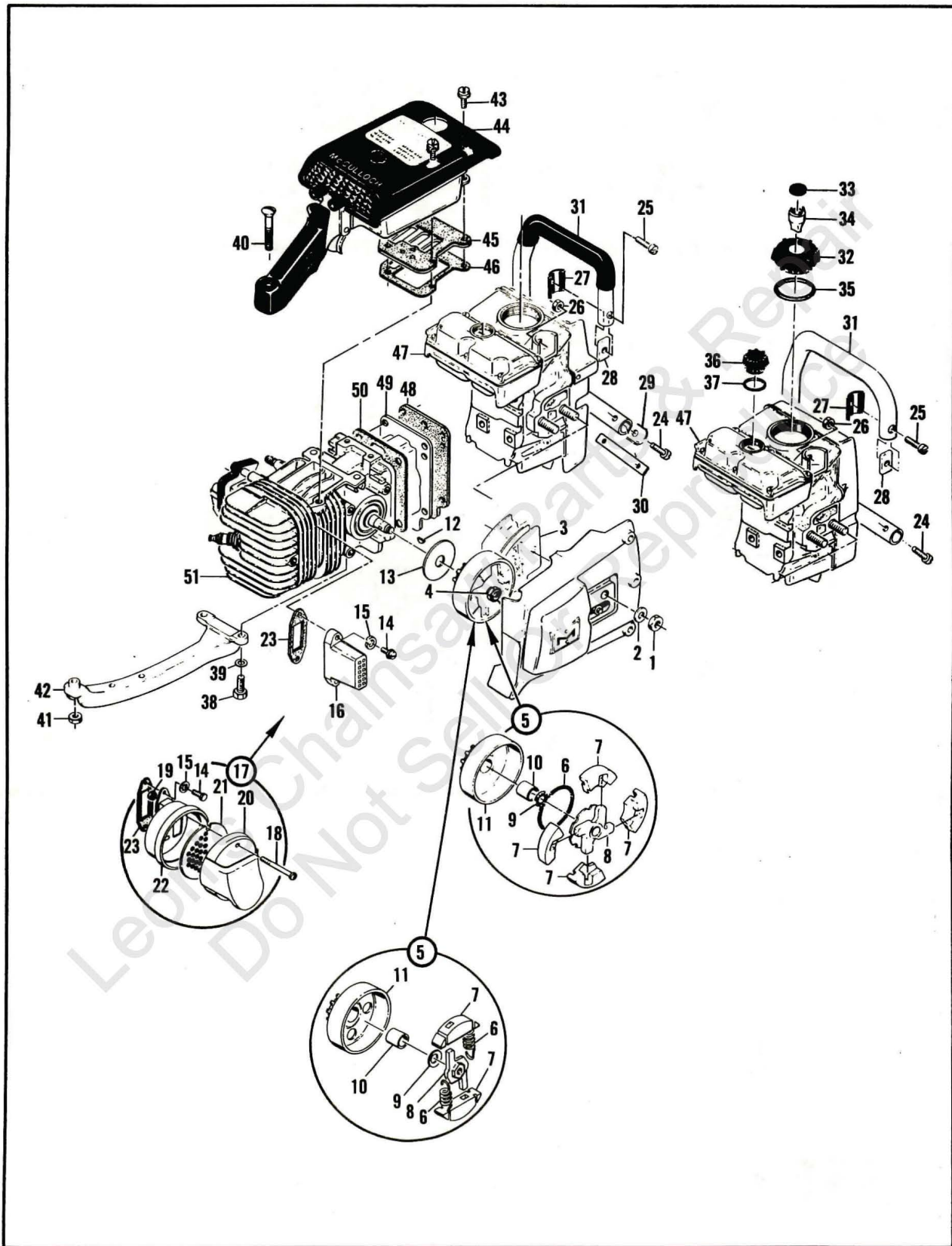


Figure 1. Right Hand Side Elements



# 200/300 SERIES

## FIGURE 1. RIGHT HAND SIDE ELEMENTS

Index No.	Part Number	Nomenclature	Units Per Assy	Usable on Code
Code: "A" indicates parts used on early Model 200 chain saws.				
"B" indicates parts used on later Model 200 chain saws.				
"C" indicates parts used on 1962 Model 250 chain saws.				
"D" indicates parts used on 1963 Model 250 chain saws.				
"E" indicates parts used on 1964 Model 250 chain saws.				
"F" indicates parts used on Model 250 chain saws, serial 76,001 and up.				
"G" indicates parts used on Model 250 chain saws, serial prefixed 10-				
"H" indicates parts used on Model 300 chain saws to serial 20,000.				
"I" indicates parts used on Model 300 chain saws, serial 20,001 and up.				
"J" indicates parts used on Model 380 chain saws.				
1	103729	Nut - Hex 3/8-24 . . . . .	2	ALL
2	100006	Washer - 3/8 plain . . . . .	2	ALL
		Clutch Guard Assy (See Figure 9) . . . . .	1	ALL
3	61994	Set - Bar plates . . . . .	1	ALL
4	103746	Nut - Flexloc 3/8-24 . . . . .	1	H, I, J
5	50060B	Clutch Assy. . . . .	1	A, C, D, G
	52844	Clutch Assy. . . . .	1	B, E, F
	60315	Clutch Assy. . . . .	1	H, I, J
6	51468A	. Spring - Clutch . . . . .	1	A, C, D, G, H, I, J
	63999	. Spring - Clutch . . . . .	2	B, E, F
7	51464A	. Shoe - Clutch. . . . .	4	A, C, D, G, H, I, J
	52845	. Shoe - Clutch. . . . .	2	B, E, F
8	50144B	. Rotor Assy - Clutch . . . . .	1	A, C, D, G
	52846	. Rotor Assy - Clutch . . . . .	1	B, E, F
	60316	. Rotor Assy . . . . .	1	H, I, J
9	101270	Washer - 7/16 plain . . . . .	1	B, E, F, G
	63834	Washer - Clutch. . . . .	1	D
	103718	Spring - Loading . . . . .	1	H, I, J
	50129A	Drum - Sprocket & Bushing - 7 tooth, 404 pitch . . . . .	1	A, B, C, D, E, F, G
	51774B	Drum - Sprocket & Bearing . . . . .	1	H, I, J
10	50128	. Bushing - Sprocket. . . . .	1	A, B, C, D, E, F, G
	103688	. Bearing - Needle . . . . .	1	H, I, J
11	51775B	. Sprocket and Drum . . . . .	1	ALL
12	103879	Key - Woodruff . . . . .	1	H, I, J
13	50132	Washer - Sprocket . . . . .	1	A, B, C, D, E, F, G
	51420	Washer - Sprocket shroud . . . . .	1	H, I, J
14	102388	Screw - Hex hd 10-24 x 5/8 . . . . .	2	A, C, D, H, I, J
	103464	Screw - Hex hd 10-24 x 3/4 (SEMS) . . . . .	2	B
	102289	Screw - Hex hd 10-24 x 3/4 . . . . .	2	E, F, G
15	103100	Washer - Lock #10 . . . . .	2	ALL
16	50115	Pipe - Exhaust. . . . .	1	A, B, E, F, G
17	63910	Spark Arrester Assy. . . . .	1	C, D, H, I, J
18	110371	. Screw - Pan hd 10-24 x 1-5/8. . . . .	2	C, D, H, I, J
19	101191	. Nut - Hex 10-24 lock. . . . .	2	C, D, H, I, J
20	53205B	. Top Assy - Spark arrester. . . . .	1	C, D, H, I, J
21	51968	. Baffle - Spark arrester . . . . .	1	C, D, H, I, J
22	52424B	. Bottom Assy - Spark arrester . . . . .	1	C, D, H, I, J
23	53652	Gasket - Exhaust . . . . .	1	ALL
24	102356	Screw - Fil hd 1/4-20 x 7/8 . . . . .	2	A, B, E, F, G, H, J
	102130	Screw - Hex hd 1/4-20 x 1-1/2 . . . . .	2	C, D
	103267	Screw - Fil hd 1/4-20 x 1 . . . . .	2	I
25	103267	Screw - Fil hd 1/4-20 x 1 . . . . .	1	A, B, C, D, E, F, G
	102356	Screw - Fil hd 1/4-20 x 7/8 . . . . .	1	H, I, J
26	101143	Nut - Hex 1/4-20 . . . . .	3	ALL
27	50062	Insulator - Frame . . . . .	3	ALL
28	57133	Saddle - Frame . . . . .	3	A, B, E, H, J
	57133	Saddle - Frame . . . . .	1	C, D, F, G, I
29	50215	Clamp - Frame . . . . .	1	C, D
30	62233	Saddle - Frame . . . . .	1	F, G, I
31	63349	Frame and Grip Assy . . . . .	1	A, B, D, E, F, G, H, I, J
	53569	Frame and Grip Assy . . . . .	1	C

# 200/300 SERIES

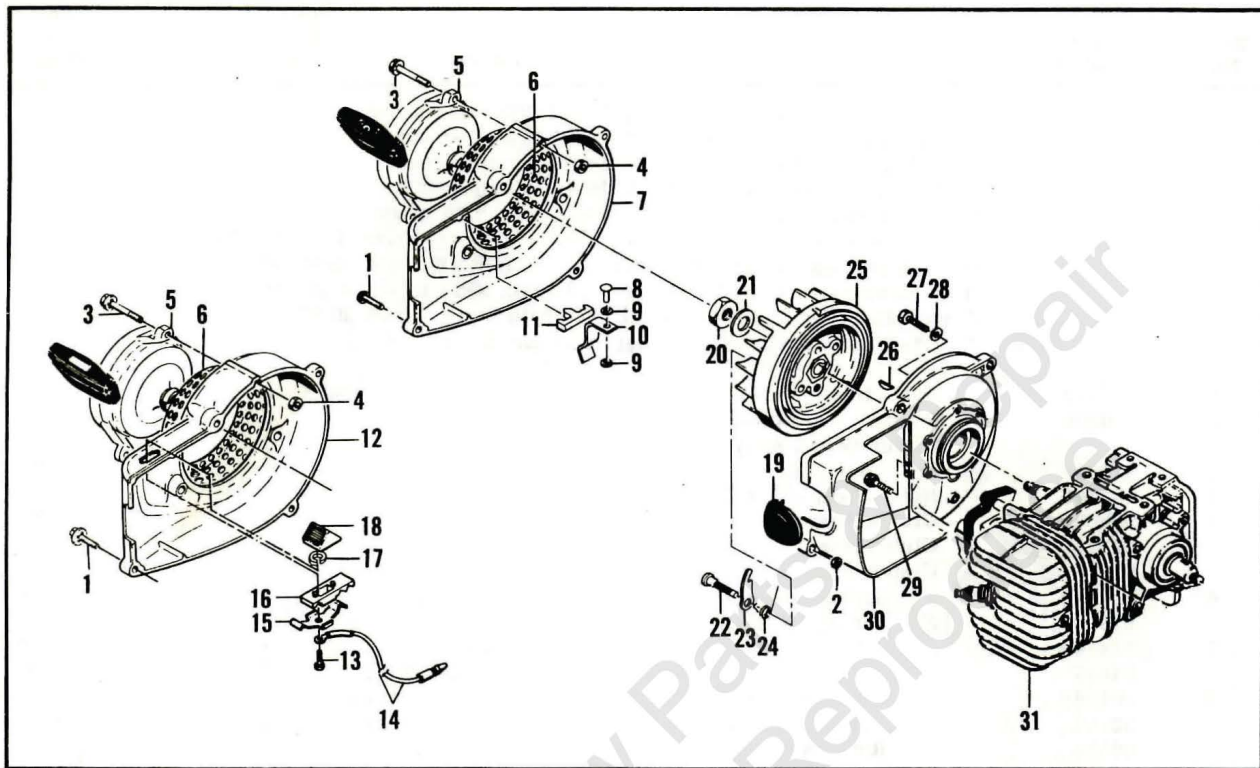


Figure 2. Left Hand Side Elements

## FIG. 1. RIGHT HAND SIDE ELEMENTS (CONTINUED)

Index No.	Part Number	Nomenclature	Units Per Assy	Usable on Code
32	55934B	Cap Assy - Fuel. . . . .	1	A, B, D, E, F, G, H, I, J
	57128	Cap - Fuel . . . . .	1	C
33	55063	. Filter. . . . .	1	A, B, D, E, F, G, H, I, J
34	53766A	. Valve - Check . . . . .	1	A, B, D, E, F, G, H, I, J
35	101348	"O" Ring. . . . .	1	ALL
36	57129A	Cap - Oiler. . . . .	1	ALL
37	101148	"O" Ring. . . . .	1	ALL
38	100882	Screw - Hex hd 1/4-20 x 3/4 . . . . .	2	ALL
39	100004	Washer - 1/4 plain. . . . .	2	ALL
40	104435	Screw - Oval hd 10-24 x 1-3/4 . . . . .	1	ALL
41	101191	Nut - Hex 10-24 lock. . . . .	1	ALL
42	50041	Brace - Handle . . . . .	1	ALL
43	110127	Screw - Hex hd 10-24 x 7/8 (SEMS) . . . . .	2	ALL
44		Airbox Assy (See Figure 5) . . . . .	1	ALL
45		Reed Plate Assy (See Figure 5). . . . .	1	ALL
46	57657A	Insulator - Reed plate . . . . .	1	A, B, C, D, E, H, J
47	③ 62834	Insulator - Reed plate . . . . .	1	F, G, I
48	65669	Fuel and Oil Tanks (See Figure 4). . . . .	1	ALL
49	53399E	Gasket - Crankcase bottom . . . . .	1	F, G, I
50	65654	Bottom - Crankcase . . . . .	1	B, E, F, G, H, I, J
51	65654	Gasket - Manifold. . . . .	1	ALL
		Powerhead (See Figure 8) . . . . .	1	ALL

① Alternate baffle is 61545A.

② Not original frame on A, B, D, E, F, H, J. Use one #57133 saddle, one #62233 saddle as shown with this frame for G and I.

③ Part of #62488 Airbox Assy - Figure 5.



# 200/300 SERIES

## FIGURE 2. LEFT HAND SIDE ELEMENTS

Index No.	Part Number	Nomenclature	Units Per Assy	Usable on Code
Code: "A" indicates parts used on early Model 200 chain saws.				
"B" indicates parts used on later Model 200 chain saws.				
"C" indicates parts used on 1962 Model 250 chain saws.				
"D" indicates parts used on 1963 Model 250 chain saws.				
"E" indicates parts used on 1964 Model 250 chain saws.				
"F" indicates parts used on Model 250 chain saws, serial 76,001 and up.				
"G" indicates parts used on Model 250 chain saws, serial prefixed 10-.				
"H" indicates parts used on Model 300 chain saws to serial 20,000.				
"I" indicates parts used on Model 300 chain saws, serial 20,001 and up.				
"J" indicates parts used on Model 380 chain saws.				
1	104815	Screw - Hex hd 10-24 x 7/8 (SEMS) . . . . .	4	A, B, E, F, G, H, I, J
	110127	Screw - Hex hd 10-24 x 7/8 (SEMS) . . . . .	4	C, D
2	101191	Nut - Hex 10-24 lock. . . . .	2	A, B, C, D, E, H, J
	101326	Nut - Hex 10-24. . . . .	2	F, G, I
3	104815	Screw - Hex hd 10-24 x 7/8 (SEMS) . . . . .	3	ALL
4	101191	Nut - Hex 10-24 lock. . . . .	3	ALL
5		Starter Assy (See Figure 3) . . . . .	1	ALL
6	50581A	Guard - Sawdust. . . . .	1	ALL
7	57184B	Housing - Fan . . . . .	1	A, B, E, F, G
8	103819	. Rivet - Oval hd 3/16 x 5/16 . . . . .	1	A, B, E, F, G
9	24236	. Spacer . . . . .	2	A, B, E, F, G
10	50818	. Spring - Switch . . . . .	1	A, B, E, F, G
11	50817	. Button - Switch . . . . .	1	A, B, E, F, G
12	53488	Housing - Fan . . . . .	1	C, D, H, I, J
13	103672	. Screw - Fil hd 8-32 x 1/2 (SEMS) . . . . .	1	C, D, H, I, J
14	53490	. Wire Assy - Switch. . . . .	1	C, D, H, I, J
15	59592	. Contact - Switch. . . . .	1	C, D, H, I, J
16	59591	. Base - Switch . . . . .	1	C, D, H, I, J
17	100057	. Washer - Lock #8. . . . .	1	C, D, H, I, J
18	57718	. Button - Switch . . . . .	1	C, D, H, I, J
19	57565	Cover Assy - Spark plug . . . . .	1	ALL
20	101179	Nut - Hex 7/16-20 jam . . . . .	1	ALL
21	101270	Washer - 7/16 plain . . . . .	1	ALL
22	36144B	Pin - Pawl . . . . .	2	ALL
23	24093	Pawl - Starter. . . . .	2	ALL
24	50582	Spring - Pawl . . . . .	2	ALL
25	68279	Flywheel. . . . .	1	A, B, C, D, E, F, H, I, J
	① 68282	Flywheel and Pawl Assy . . . . .	1	G
26	100199	Key - Woodruff #3 . . . . .	1	A, C, D, J
	103879	Key - Woodruff #213. . . . .	1	B, E, F, G, H, I
27	102289	Screw - Hex hd 10-24 x 3/4 . . . . .	4	ALL
28	102189	Washer - Flat #10 . . . . .	3	ALL
29	55494	Screw Assy. . . . .	2	ALL
30		Crankcase Cover Assy (See Figure 3) . . . . .	1	ALL
31		Powerhead (See Figure 8) . . . . .	1	ALL

① Includes Index Numbers 22, 23 and 24.

# 200/300 SERIES

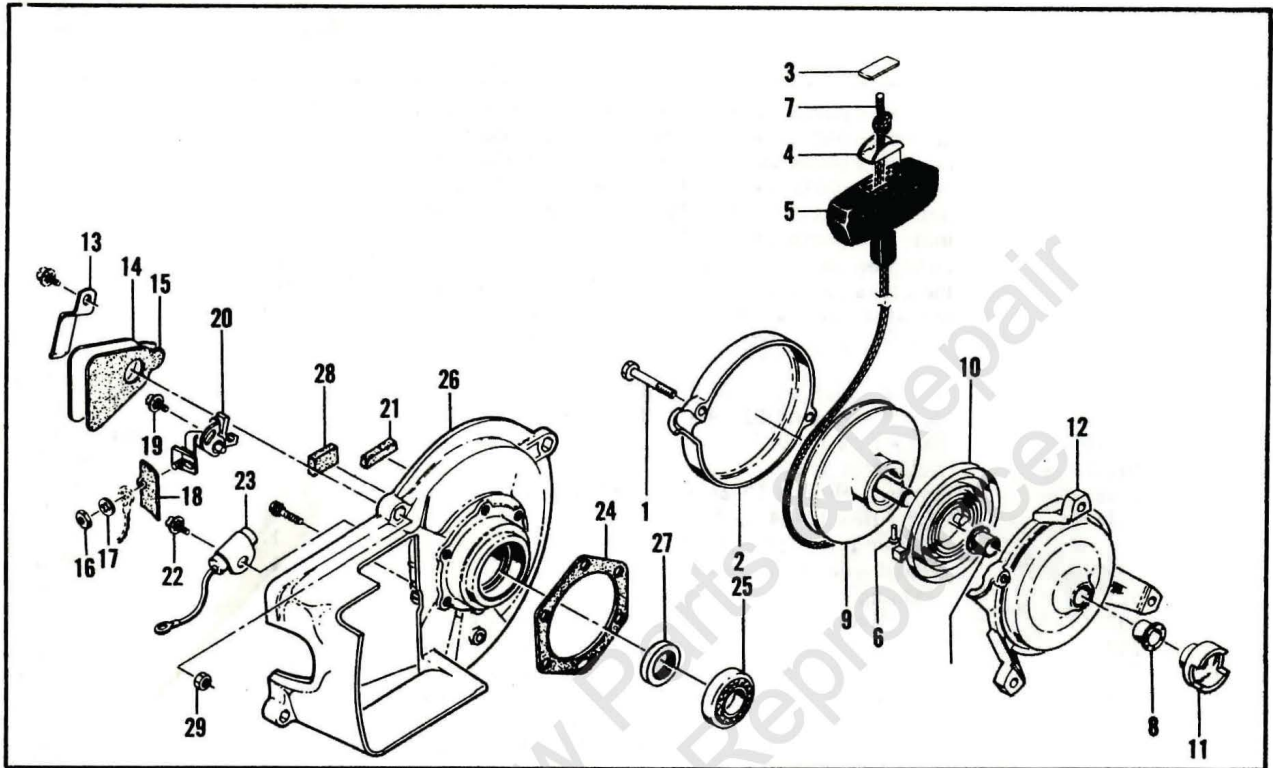


Figure 3. Starter and Crankcase Cover

## FIGURE 3. STARTER AND CRANKCASE COVER

Index No.	Part Number	Nomenclature	Units Per Assy	Usable on Code
Code: "A" indicates parts used on early Model 200 chain saws.				
"B" indicates parts used on later Model 200 chain saws.				
"C" indicates parts used on 1962 Model 250 chain saws.				
"D" indicates parts used on 1963 Model 250 chain saws.				
"E" indicates parts used on 1964 Model 250 chain saws.				
"F" indicates parts used on Model 250 chain saws, serial 76,001 and up.				
"G" indicates parts used on Model 250 chain saws, serial prefixed 10-.				
"H" indicates parts used on Model 300 chain saws to serial 20,000.				
"I" indicates parts used on Model 300 chain saws, serial 20,001 and up.				
"J" indicates parts used on Model 380 chain saws.				
	60130	Starter Assy . . . . .	1	ALL
1	104396	. Screw - Pan hd 10-24 x 3/4 . . . . .	2	ALL
2	60647	. Cover - Starter . . . . .	1	ALL
3	57232	. Plate - Handle . . . . .	1	ALL
4	57231	. Cup - Handle . . . . .	1	ALL
5	57230	. Handle - Starter. . . . .	1	ALL
6	101136	. Rivet - Rd hd 3/32 x 5/16 . . . . .	1	ALL
7	28716	. Rope - Starter . . . . .	1	ALL
8	57535	. Bearing - Drum shaft . . . . .	2	ALL
9	57792	. Drum - Starter . . . . .	1	ALL
10	51665	. Spring - Rewind . . . . .	1	ALL
11	57790	. Ratchet - Starter . . . . .	1	ALL
12	60646	. Base - Starter . . . . .	1	ALL
13	50671	Retainer - Breaker box cover. . . . .	1	ALL
14	50588A	Cover - Breaker box. . . . .	1	ALL
15	65584	Gasket - Breaker box . . . . .	1	ALL
16	100251	Nut - Hex 8-32. . . . .	1	ALL



**FIG. 3. STARTER & CRANKCASE COVER (CONT.)**

Index No.	Part Number	Nomenclature	Units Per Assy	Usable on Code
17	100057	Washer - Lock #8. . . . .	1	ALL
18	50381A	Insulator - Breaker . . . . .	1	ALL
19	103672	Screw - Fil hd 8-32 x 1/2 (SEMS) . . . . .	1	ALL
20	50076A	Breaker Assy . . . . .	1	ALL
21	50664	Seal - Breaker box . . . . .	1	ALL
22	103672	Screw - Fil hd 8-32 x 1/2 (SEMS) . . . . .	1	ALL
23	50074	Condenser . . . . .	1	ALL
24	51240	Gasket - End cover . . . . .	1	ALL
25	100824	Bearing - Ball . . . . .	1	ALL
26	57126A	Cover - Crankcase . . . . .	1	ALL
27	50663	Seal - Shaft . . . . .	1	ALL
28	54184	Wiper - Felt . . . . .	1	ALL
29	101326	Nut - Hex 10-24 . . . . .	2	ALL

**FIGURE 4. FUEL AND OILER TANKS**

Index No.	Part Number	Nomenclature	Units Per Assy	Usable on Code
Code: "A" indicates parts used on early Model 200 chain saws.				
"B" indicates parts used on later Model 200 chain saws.				
"C" indicates parts used on 1962 Model 250 chain saws.				
"D" indicates parts used on 1963 Model 250 chain saws.				
"E" indicates parts used on 1964 Model 250 chain saws.				
"F" indicates parts used on Model 250 chain saws, serial 76,001 and up.				
"G" indicates parts used on Model 250 chain saws, serial prefixed 10-.				
"H" indicates parts used on Model 300 chain saws to serial 20,000.				
"I" indicates parts used on Model 300 chain saws, serial 20,001 and up.				
"J" indicates parts used on Model 380 chain saws.				
1	104396	Screw - Pan hd 10-24 x 3/4 . . . . .	10	ALL
2	60781	Cover - Fuel tank . . . . .	1	ALL
3	65580	Gasket - Fuel tank . . . . .	1	ALL
4	50124A	Filter - Felt fuel . . . . .	1	ALL
5	50082	Hose - Flexible fuel . . . . .	1	ALL
6	104395	Screw - Pan hd 10-24 x 5/8 . . . . .	6	ALL
7	100010	Pin - Cotter 1/16 x 1/2 . . . . .	1	ALL
8	57114A	Tank Cover - Oil . . . . .	1	ALL
9	57152	Gasket - Oiler tank . . . . .	1	ALL
10	55494	Screw Assy . . . . .	3	ALL
11	101191	Nut - Hex 10-24 lock . . . . .	3	A,C,D
	101326	Nut - Hex 10-24 . . . . .	3	B,E,F,G,H,I,J
12	57279	Screen - Oiler . . . . .	1	ALL
13	57112A	Tank - Oiler . . . . .	1	ALL
14	57147	Gasket - Oiler tank . . . . .	1	ALL
15	50340	Screw Assy - Sealing . . . . .	3	A,C,D
	57840	Screw - Sealing . . . . .	3	B,E,F,G,H,I,J
16	50569	Screw Assy - Sealing . . . . .	1	ALL
17	63122	Piston - Oiler . . . . .	1	ALL
18	101056	"O" Ring . . . . .	1	ALL
19	24104A	Cup . . . . .	1	ALL
20	63943	Spring - Primer . . . . .	1	ALL
21	103814	Screw - Sems 10-24 . . . . .	3	F,G,I
22	62339A	Plate - Pulse pump . . . . .	1	F,G,I
23	65673	Gasket - Pulse pump . . . . .	1	F,G,I
24	63034	Spring - Outlet valve . . . . .	1	F,G,I

# 200/300 SERIES

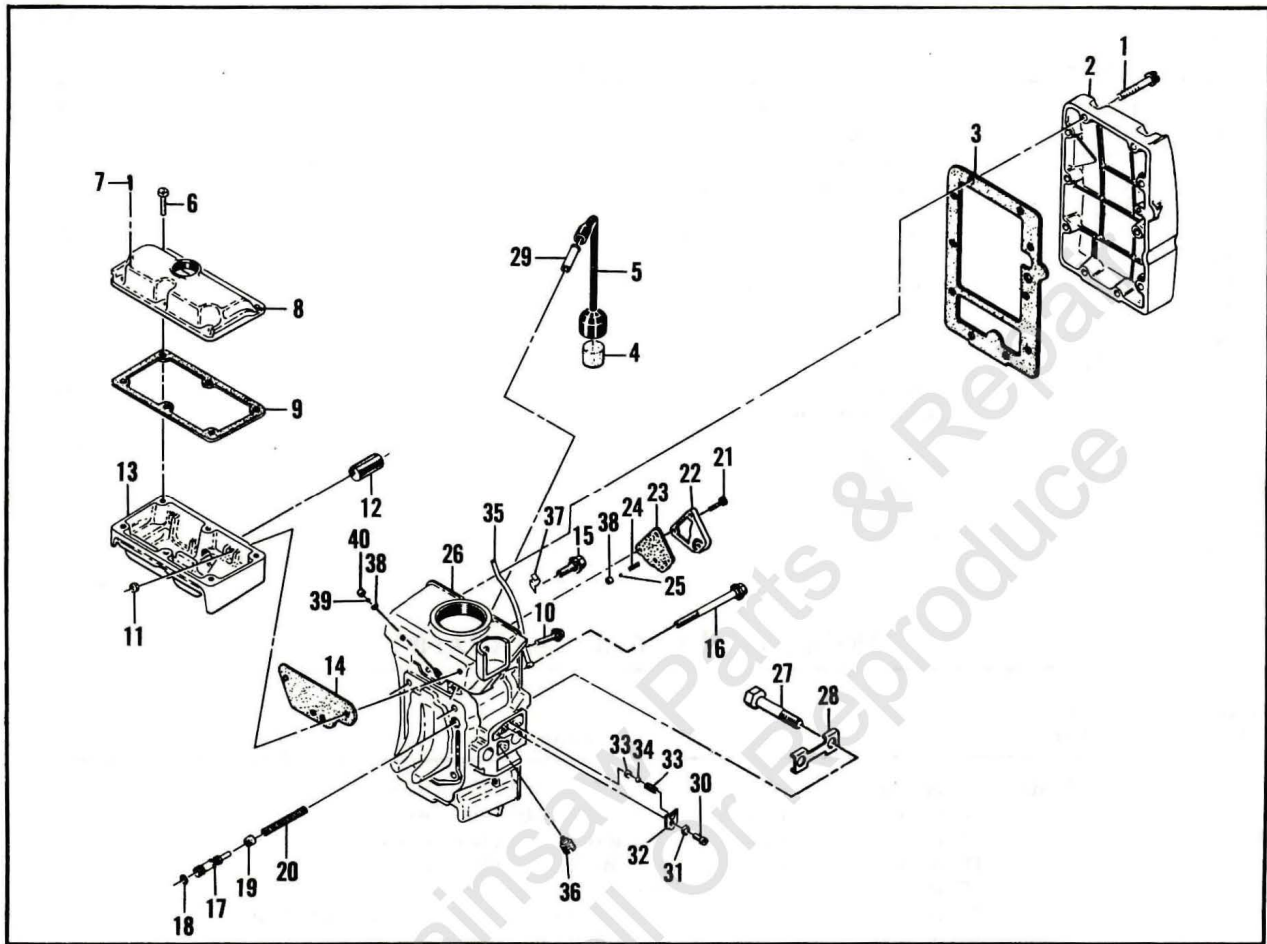


Figure 4. Fuel and Oiler Tanks

## FIG. 4. FUEL & OILER TANKS (CONTINUED)

Index No.	Part Number	Nomenclature	Units Per Assy	Usable on Code
25	100071	Ball - 5/32 dia. . . . .	1	F,G,I
26		Fuel Tank Assy (Order Fuel Tank Assy #53553C). . . . .	1	A,C,D
		Fuel Tank Assy (Order Fuel Tank Assy #62426A). . . . .	1	B,E,H,J
	62154A	Fuel Tank Assy . . . . .	1	F,G,I
27	57217	. Bolt - Bar mounting . . . . .	2	A,B,C,D,E,H,J
	61437	. Bolt - Bar mounting . . . . .	2	F,G,I
28	51439	. Plate - Lock . . . . .	1	ALL
29	28042	. Tube - Oiler housing. . . . .	1	ALL
30	110055	. Screw - Fil hd 8-32 x 3/8 (SEMS) . . . . .	1	A,B,D,E,H,J
	102219	. Screw - Fil hd 8-32 x 1/4 . . . . .	1	C
31	100057	. Washer - Lock #8. . . . .	1	C
32	51941	. Retainer - Outlet valve spring . . . . .	1	A,B,C,D,E,H,J
33	62218	. Kit - Check valve . . . . .	1	A,B,C,D,E,H,J
34	100549	. Ball 3/16 dia. . . . .	1	A,B,C,D,E,H,J
35	50501	. Tube - Vent. . . . .	1	C
36	50505A	. Orifice Assy . . . . .	1	C
	57595	. Vent - Plug. . . . .	1	D
37	104230	. Nut - Speed 1/8 dia. . . . .	1	C
38	62216	. Seat - Ball . . . . .	2	F,G,I
39	100071	. Ball - 5/32 dia. . . . .	1	F,G,I
40	110327	. Ring - Retaining. . . . .	1	F,G,I



**FIG. 4. FUEL & OILER TANKS (CONTINUED)**

Index No.	Part Number	Nomenclature	Units Per Assy	Usable on Code
Fuel Tank Assy #53553C				
26	① 53553C	Tank Assy - Fuel . . . . .	1	A, C, D
27	57217	. Bolt - Bar mounting . . . . .	2	A, C, D
28	51439	. Plate - Lock . . . . .	1	A, C, D
29	28042	. Tube - Oiler housing. . . . .	1	A, C, D
30	110055	. Screw - Fil hd 8-32 x 3/8 (SEMS) . . . . .	1	A, C, D
32	51941	. Retainer - Outlet valve spring . . . . .	1	A, C, D
33	62218	. Kit - Check valve . . . . .	1	A, C, D
34	100071	. Ball - 3/16 dia. . . . .	1	A, C, D
Fuel Tank Assy #62426A				
26	62426A	Tank Assy - Fuel . . . . .	1	B, E, H, J
15	57840	. Screw - Sealing . . . . .	3	B, E, H, J
	50261	. . Washer - Sealing . . . . .	1	B, E, H, J
16	50569	. Screw Assy - Sealing . . . . .	1	B, E, H, J
	50261	. . Washer - Sealing . . . . .	1	B, E, H, J
17	63122	. Piston - Oiler . . . . .	1	B, E, H, J
18	101056	. "O" Ring. . . . .	1	B, E, H, J
19	24104A	. Cup . . . . .	1	B, E, H, J
20	63943	. Spring - Primer. . . . .	1	B, E, H, J
21	103814	. Screw - Sems 10-24 . . . . .	3	B, E, H, J
22	62339A	. Plate - Pulse pump. . . . .	1	B, E, H, J
23	65673	. Gasket - Pulse pump. . . . .	1	B, E, H, J
24	63034	. Spring - Outlet valve. . . . .	1	B, E, H, J
25	100071	. Ball - 5/32 dia. . . . .	1	B, E, H, J
27	61437	. Bolt - Bar mounting . . . . .	2	B, E, H, J
28	51439	. Plate - Lock . . . . .	1	B, E, H, J
29	28042	. Tube - Oiler housing. . . . .	1	B, E, H, J
38	62216	. Seat - Ball . . . . .	2	B, E, H, J
39	100071	. Ball - 5/32 dia. . . . .	1	B, E, H, J
40	110327	. Ring - Retaining. . . . .	1	B, E, H, J
	② 65654	. Gasket - Manifold. . . . .	1	B, E, H, J
	② 53399E	. Bottom - Crankcase . . . . .	1	B, E, H, J
	② 65669	. Gasket - Crankcase bottom . . . . .	1	B, E, H, J

① This assembly includes Fuel Cap Assembly #55934B and its parts and the required "O" ring as shown in Figure 1, index numbers 32, 33, 34 and 35.

② Location of these items is shown in Figure 1, index numbers 48, 49 and 50.

**FIGURE 5. AIRBOX AND REED VALVE**

Index No.	Part Number	Nomenclature	Units Per Assy	Usable on Code
1		Plate - Name M-200, M-300 (not available) . . . . .	1	A, H
	61389	Plate - Name M-200 . . . . .	1	B
	58973C	Plate - Name M-250 . . . . .	1	C, D

Code: "A" indicates parts used on early Model 200 chain saws.  
 "B" indicates parts used on later Model 200 chain saws.  
 "C" indicates parts used on 1962 Model 250 chain saws.  
 "D" indicates parts used on 1963 Model 250 chain saws.  
 "E" indicates parts used on 1964 Model 250 chain saws.  
 "F" indicates parts used on Model 250 chain saws, serial 76,001 and up.  
 "G" indicates parts used on Model 250 chain saws, serial prefixed 10-.  
 "H" indicates parts used on Model 300 chain saws to serial 20,000.  
 "I" indicates parts used on Model 300 chain saws, serial 20,001 and up.  
 "J" indicates parts used on Model 380 chain saws.

# 200/300 SERIES

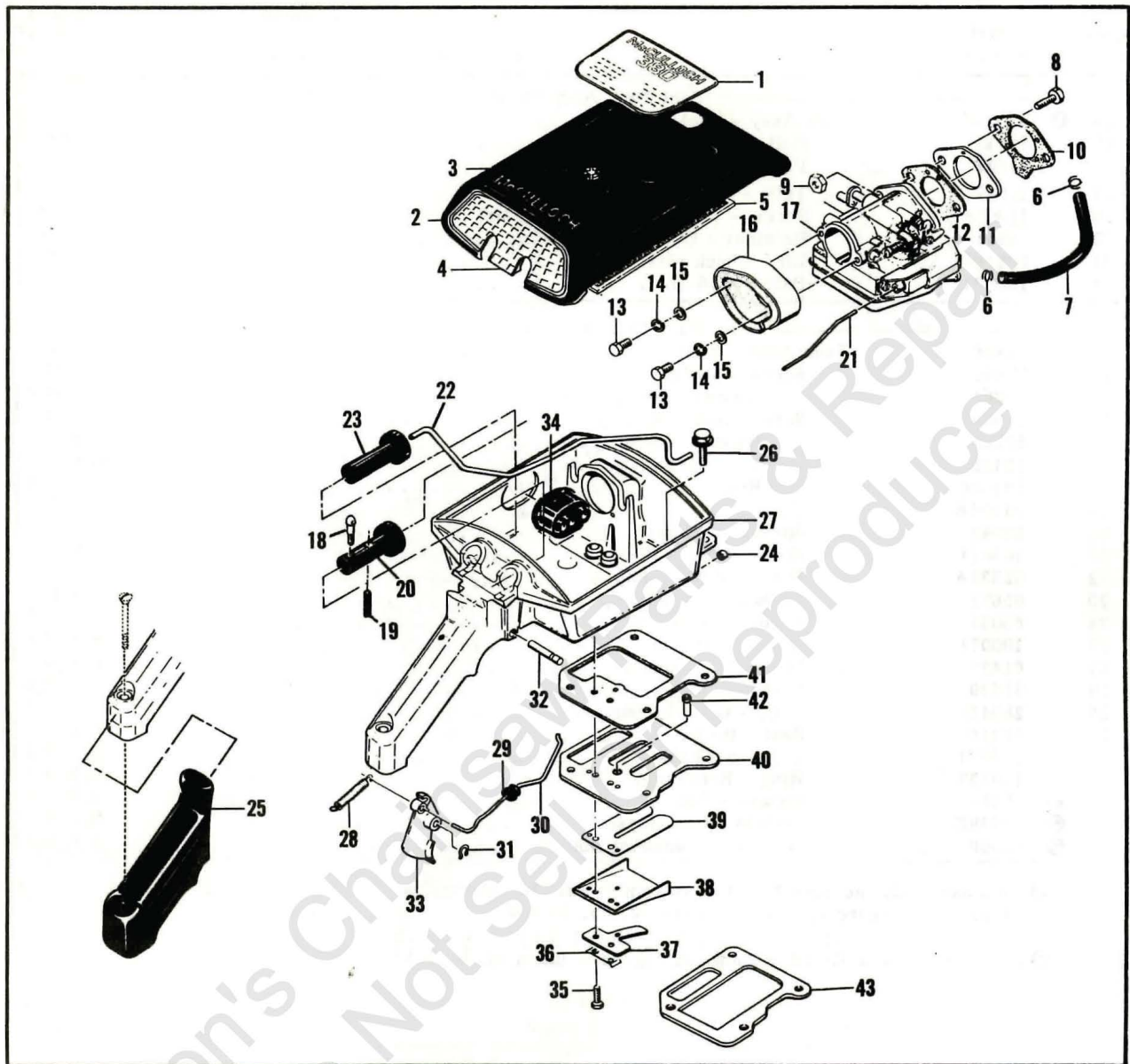


FIG. 5. AIRBOX & REED VALVE (CONTINUED)

Index No.	Part Number	Nomenclature	Units Per Assy	Usable on Code
	61931A	Plate - Name M-250 . . . . .	1	E, F, G
	62783	Plate - Name M-300 . . . . .	1	I
	60326A	Plate - Name M-380 . . . . .	1	J
2	60303	Cover Assy - Air cleaner . . . . .	1	A
		Cover Assy (Order Cover Assy #67288) . . . . .	1	B, C, D, E, F, G, H, I, J
3	60241	. Knob - Air cleaner cover . . . . .	1	A
	60242	. Knob - Air cleaner cover (used with Cover Assy #67288) . . . . .	1	B, E, F, G, H, I, J
	50674	. Nut - Air cleaner . . . . .	1	C, D
4	57218	Trim - Air cover . . . . .	1	H, I, J
5	55497	Screen - Air cleaner . . . . .	1	A, B, C, D, E, F, G, J
	55497	Screen - Air cleaner . . . . .	2	H, I
6	50742	Clamp - Fuel hose . . . . .	2	ALL



# 200/300 SERIES

## FIG. 5. AIRBOX & REED VALVE (CONT.)

Index No.	Part Number	Nomenclature	Units Per Assy	Usable on Code
7	50097	Hose - Fuel . . . . .	1	ALL
8	53539	Screw - Special . . . . .	2	A,B,E,F,G,H,I
	102128	Screw - Hex hd 1/4-20 x 1-1/4 . . . . .	2	C
	102121	Screw - Hex hd 1/4-20 x 7/8 . . . . .	2	D
	60208	Screw - Special . . . . .	2	J
9	103242	Nut - Hex 1/4-20 jam . . . . .	2	ALL
10	65583	Gasket - Carburetor . . . . .	1	ALL
11	50686A	Adapter - Tillotson carburetor . . . . .	1	A,B,E,F,G,H,I
	53189	Adapter - McCulloch carburetor . . . . .	1	C,D,J
12	65630	Gasket - Carburetor . . . . .	1	A,B,E,F,G,H,I
	65583	Gasket - Carburetor . . . . .	1	C,D,J
13	103705	Screw - Hex hd 10-32 x 3/8 . . . . .	2	D,J
14	103174	Washer - Lock #10 . . . . .	2	D,J
15	102189	Washer - Flat #10 . . . . .	2	D,J
16	58922A	Collector Assy - Fuel . . . . .	1	D,J
17		Carburetor Assy - Tillotson (See Figure 6) . . . . .	1	A,B,E,F,G,H,I
		Carburetor Assy - McCulloch (See Figure 7) . . . . .	1	C,D,J
18	61822	Screw - Choke button . . . . .	1	A,B,E,F,G,H,I
19	101556	Pin - Roll 1/8 x 5/8 . . . . .	1	A,B,C,E,F,G,H,I
20	50777B	Button - Choke . . . . .	1	A,B,E,F,G,H,I
	50591B	Button . . . . .	1	C,D,J
21	57134	Rod - Choke . . . . .	1	A,B,E,F,G,H,I
	53589A	Rod - Primer push . . . . .	1	C,D,J
22	57866A	Pushrod - Oiler . . . . .	1	A,F,G,H,I,J
	57062	Pushrod - Oiler . . . . .	1	B,C,D,E
23	50591B	Button - Oiler . . . . .	1	ALL
24	57736	Seal - Pushrod . . . . .	1	ALL
25	50218A	Grip - Handle . . . . .	1	C,D,H,I,J
26	110127	Screw - Hex hd 10-24 x 7/8 (SEMS) . . . . .	2	ALL
27	57449E	Airbox Assy - Universal . . . . .	1	A,B,E,H
		Airbox Assy (Order Airbox Assy #57449E) . . . . .	1	C,D,J
	62488	Airbox Assy . . . . .	1	F,G,I
28	36499	Spring . . . . .	1	ALL
29	68258	Grommet - Throttle . . . . .	1	ALL
30	50684	Rod - Throttle . . . . .	1	A,B,E,F,G,H,I
	53279A	Rod - Throttle . . . . .	1	C,D,J
31	104501	Retainer - Pin . . . . .	1	ALL
32	50507	Pin - Trigger . . . . .	1	ALL
33	50091B	Trigger . . . . .	1	ALL
34	57105	Grommet - Carburetor . . . . .	1	A,B,E,F,G,H,I
	53277	Grommet - Carburetor control . . . . .	1	C,D,J
35	103740	Screw - Hex hd 8-32 x 5/8 . . . . .	2	ALL
36	51480	Plate - Lock . . . . .	1	ALL
37	57658A	Clamp - Reed valve . . . . .	1	ALL
38	57654A	Deflector - Fuel . . . . .	1	A,B,C,D,E,H
	66274	Deflector - Fuel . . . . .	1	F,G,I,J
39	58399	Valve - Reed . . . . .	1	A,B,C,D,E,H,J
	48593	Valve - Reed . . . . .	1	F,G,I
40	53685C	Plate - Reed . . . . .	1	ALL
41	65653	Gasket - Airbox . . . . .	1	ALL
42	63067	Tube - Reed plate . . . . .	1	F,G,I
43	62834	Insulator - Reed plate . . . . .	1	F,G,I

# 200/300 SERIES

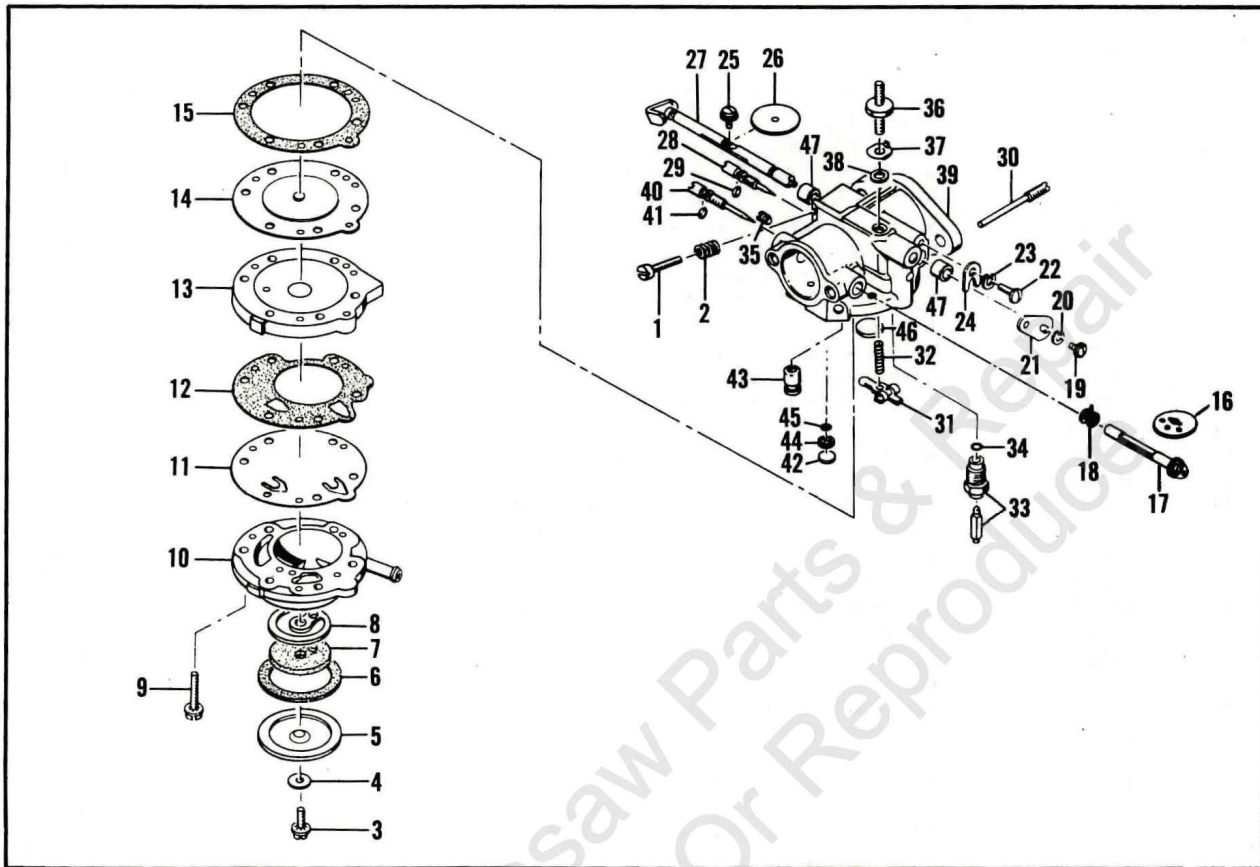


Figure 6. Tillotson Carburetor

## FIGURE 6. TILLOTSON CARBURETOR

Index No.	Part Number	Nomenclature	Units Per Assy	Usable on Code
		Code: "A" indicates parts used on early Model 200 chain saws.		
		"B" indicates parts used on later Model 200 chain saws.		
		"C" indicates parts used on 1962 Model 250 chain saws.		
		"D" indicates parts used on 1963 Model 250 chain saws.		
		"E" indicates parts used on 1964 Model 250 chain saws.		
		"F" indicates parts used on Model 250 chain saws, serial 76,001 and up.		
		"G" indicates parts used on Model 250 chain saws, serial prefixed 10-.		
		"H" indicates parts used on Model 300 chain saws to serial 20,000.		
		"I" indicates parts used on Model 300 chain saws, serial 20,001 and up.		
		"J" indicates parts used on Model 380 chain saws.		
		Carburetor Assy - Tillotson (Order Carburetor Assy #66346) . . . . .	1	A,B,E,F,G,I
	66346	Carburetor Assy - Tillotson. . . . .	1	G
1	*50799	. Screw - Idle adjustment. . . . .	1	A,B,E,F,G,H,I
2	*51705	. Spring - Idle screw. . . . .	1	A,B,E,F,G,H,I
3	*50797	. Screw - Fuel cover. . . . .	1	A,B,E,F,G,H,I
4	50798	. Gasket - Strainer cover screw . . . . .	1	A,B,E,F,G,H,I
5	50796	. Cover - Fuel strainer. . . . .	1	A,B,E,F,G,H,I
6	51704	. Gasket - Fuel strainer . . . . .	1	A,B,E,F,G,H,I
7	*53717	. Element - Fuel strainer . . . . .	1	A,B,E,F,G,H,I
8	53565	. Gasket - Carburetor. . . . .	1	A,B,E,F,G,H,I



# 200/300 SERIES

FIG. 6. TILLOTSON CARBURETOR (CONTINUED)

Index No.	Part Number	Nomenclature	Units Per Assy	Usable on Code
9	51597	Screw - Fil hd. . . . .	6	A,B,E,F,G,H,I
10	50670	Body Assy - Fuel pump . . . . .	1	A,B,E,F,G,H,I
11	*53164	Diaphragm - Fuel pump . . . . .	1	A,B,E,F,H,I
	*66401	Diaphragm - Fuel pump . . . . .	1	G
12	65592	Gasket - Fuel pump . . . . .	1	A,B,E,F,G,H,I
13	51592	Cover - Diaphragm . . . . .	1	A,B,E,F,G,H,I
14	*66167	Diaphragm . . . . .	1	A,B,E,F,G,H,I
15	65591	Gasket - Diaphragm cover . . . . .	1	A,B,E,F,G,H,I
16	53813	Shutter - Choke . . . . .	1	A,B,E,F,G,H,I
17	53814	Shaft Assy - Choke . . . . .	1	A,B,E,F,G,H,I
18	51586	Spring - Torsion . . . . .	1	A,B,E,F,G,H,I
19	*51719	Screw - Throttle lever . . . . .	1	A,B,E,F,G,H,I
20	100261	Washer - Lock #4. . . . .	1	A,B,E,F,G,H,I
21	51718	Lever - Throttle . . . . .	1	A,B,E,F,G,H,I
22	*51717	Screw - Throttle . . . . .	1	A,B,E,F,G,H,I
23	*100252	Washer - Lock #8. . . . .	1	A,B,E,F,G,H,I
24	51716	Clip - Throttle shaft . . . . .	1	A,B,E,F,G,H,I
25	*51721	Screw - Throttle . . . . .	1	A,B,E,F,G,H,I
26	51720	Shutter - Throttle . . . . .	1	A,B,E,F,G,H,I
27	50803A	Shaft and Lever Assy . . . . .	1	A,B,E,F,G,H,I
28	*51702	Screw - Idle adjustment . . . . .	1	A,B,E,F,G,H,I
29	104001	"O" Ring . . . . .	1	A,B,E,F,G,H,I
30	*51710	Pin Assy . . . . .	1	A,B,E,F,G,H,I
31	*51709	Lever - Inlet control . . . . .	1	A,B,E,F,G,H,I
32	*51711	Spring - Inlet . . . . .	1	A,B,E,F,H,I
	*66404	Spring - Inlet . . . . .	1	G
33	*51707A	Needle and Seat - Matched . . . . .	1	A,B,E,F,G,H,I
34	51708	Gasket - Inlet seat . . . . .	1	A,B,E,F,G,H,I
35	51589	Screw - Drain plug . . . . .	1	A,B,E,F,G,H,I
36	50785	Stud - Air cleaner . . . . .	1	A,B,E,F,G,H,I
37	63026	Tab - Air cleaner cover locking . . . . .	1	F,G
38	65585	Gasket - Air cleaner attachment stud . . . . .	1	A,B,E,H,I
	63945	Gasket - Air cleaner stud . . . . .	1	G
39		Body Assy - Carburetor (Order Carburetor Assy #66230) . . . . .	1	A,B,E,F,H,I
	66230	Body Assy - Carburetor . . . . .	1	G
40	*53718	Screw - Main adjustment . . . . .	1	A,B,E,F,H,I
	66405	Needle Assy - Main adjustment . . . . .	1	G
41	51703	"O" Ring . . . . .	1	A,B,E,F,G,H,I
42	*57653	Plug - Carburetor body . . . . .	1	A,B,E,F,H,I
43	65611	Valve Assy - Check . . . . .	1	G
44	57652	Ring - Screen retaining . . . . .	1	A,B,E,F,H,I
45	57651	Screen - Carburetor body . . . . .	1	A,B,E,F,H,I
46	*51583	Plug - Welsh . . . . .	1	A,B,E,F,G,H,I
47	51715	Bushing - Throttle shaft . . . . .	2	ALL
	50806	Set - Gasket . . . . .	1	A,B,E,F,G,H,I
	53719	Kit - Carburetor repair . . . . .	1	A,B,E,F,H,I
	66422	Kit - Carburetor repair . . . . .	1	G

\*Indicates parts in coded carburetor repair kits.

# 200/300 SERIES

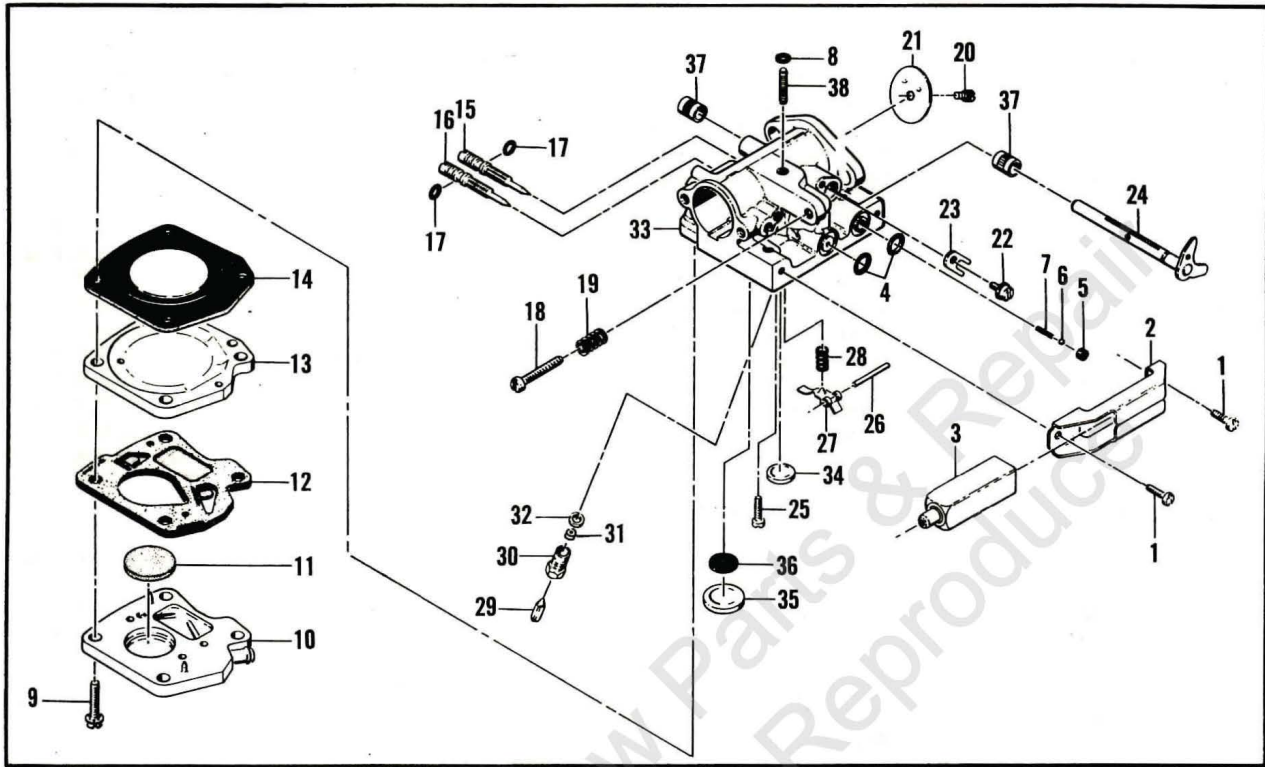


Figure 7. McCulloch Carburetor

## 7. McCULLOCH CARBURETOR

Index No.	Part Number	Nomenclature	Units Per Assy	Usable on Code
		Carburetor Assy - McCulloch (Order Carburetor Assy #58856C) . . . . .	1	C,D
		Carburetor Assy . . . . .	1	J
1	110054	. Screw - Pan hd 6-32 x 3/8 (SEMS) . . . . .	2	C,D,J
2	53440	. Bracket - Primer mounting . . . . .	1	C,D,J
3	53449	. Primer Assy . . . . .	1	C,D,J
4	101056	. "O" Ring . . . . .	2	C,D,J
5	59480	. Seat - Primer valve . . . . .	1	C,D,J
6	100302	. Ball - 1/8 dia . . . . .	1	C,D,J
7	28754	. Spring - Primer . . . . .	1	C,D,J
8	100283	. Grommet . . . . .	1	C,D,J
9	104520	. Screw - Pan hd 10-24 x 7/8 . . . . .	4	C,D,J
10	48898	. Body Assy - Fuel pump . . . . .	1	C,D,J
11	57277A	. Filter - Fuel pump . . . . .	1	C,D,J
12	57274B	. Diaphragm Assy - Fuel pump . . . . .	1	C,D,J
13	48901	. Plate - Carburetor diaphragm . . . . .	1	C,D,J

Code: "A" indicates parts used on early Model 200 chain saws.  
 "B" indicates parts used on later Model 200 chain saws.  
 "C" indicates parts used on 1962 Model 250 chain saws.  
 "D" indicates parts used on 1963 Model 250 ch in saws.  
 "E" indicates parts used on 1964 Model 250 chain saws.  
 "F" indicates parts used on Model 250 chain saws, serial 76,001 and up.  
 "G" indicates parts used on Model 250 chain saws, serial prefixed 10-.  
 "H" indicates parts used on Model 300 chain saws to serial 20,000.  
 "I" indicates parts used on Model 300 chain saws, serial 20,001 and up.  
 "J" indicates parts used on Model 380 chain saws.



# 200/300 SERIES

FIG. 7. McCULLOCH CARBURETOR (CONTINUED)

Index No.	Part Number	Nomenclature	Units Per Assy	Usable on Code
14	55067C	Diaphragm	1	C,D,J
15	53948	Needle - Idle adjustment	1	C,D,J
16	53311	Needle - Main adjustment	1	C,D,J
17	104001	"O" Ring	2	C,D,J
18	55397	Screw - Carburetor adjustment	1	C,D,J
19	51705	Spring - Idle screw	1	C,D,J
20	104814	Screw - Pan hd 4-40 x 1/4 (SEMS)	1	C,D,J
21	53309	Plate - Throttle	1	C,D,J
22	110055	Screw - Fil hd 8-32 x 3/8 (SEMS)	1	C,D,J
23	55082	Clip - Shaft	1	C,D,J
24	53588A	Shaft Assy - Throttle	1	C,D,J
25	104164	Screw - Pan hd 4-40 x 1/4	1	C,D,J
26	104305	Pin - Lever	1	C,D,J
27	55688	Lever - Inlet control	1	C,D,J
28	57172	Spring - Inlet	1	C,D,J
29	55476A	Valve - Needle	1	C,D
	63038	Valve - Inlet needle	1	J
30	55475	Body - Needle valve	1	C,D
	58969	Body - Needle valve	1	J
31	55474	Seat - Needle	1	C
	59480	Seat - Primer valve	1	D
32	55689	Washer - Carburetor valve seat	1	C,D,J
33	58852B	Body Assy - Carburetor	1	C,D,J
34	110179	Plug - Expansion 1/2	1	C,D,J
35	104407	Plug - Expansion 1	1	C,D,J
36	55690B	Filter - Fuel	1	C,D,J
37	55062A	Bushing - Carburetor body	2	C,D,J
38	48611	Stud	1	C,D,J

FIGURE 8. POWERHEAD

Index No.	Part Number	Nomenclature	Units Per Assy	Usable on Code
1	101965	Screw - Fil hd 10-24 x 7/8 (SEMS)	2	A,J
	104815	Screw - Hex hd 10-24 x 7/8 (SEMS)	2	B,E,F,G,H,I
	110127	Screw - Hex hd 10-24 x 7/8 (SEMS)	2	C,D
2	100003	Washer - Flat	2	A,J
	102189	Washer - Flat #10	2	B,C,D,E,F,G,H,I
3	51253	Retainer - Coil	2	ALL
4	51251	Lamination Assy	1	ALL
5	57643A	Coil and Terminal Assy	1	ALL
6	101883	Wire Assy - Ground	1	ALL
7	52547	Wire Assy - Spark plug	1	ALL
8	55060	Boot - Spark plug	1	ALL
9	55061	Connector - Spark plug	1	ALL
10	55617	Nipple - Spark plug	1	ALL
11	57225	Wire Assy	1	ALL

Code: "A" indicates parts used on early Model 200 chain saws.

"B" indicates parts used on later Model 200 chain saws.

"C" indicates parts used on 1962 Model 250 chain saws.

"D" indicates parts used on 1963 Model 250 chain saws.

"E" indicates parts used on 1964 Model 250 chain saws.

"F" indicates parts used on Model 250 chain saws, serial 76,001 and up.

"G" indicates parts used on Model 250 chain saws, serial prefixed 10-.

"H" indicates parts used on Model 300 chain saws to serial 20,000.

"I" indicates parts used on Model 300 chain saws, serial 20,001 and up.

"J" indicates parts used on Model 380 chain saws.

# 200/300 SERIES

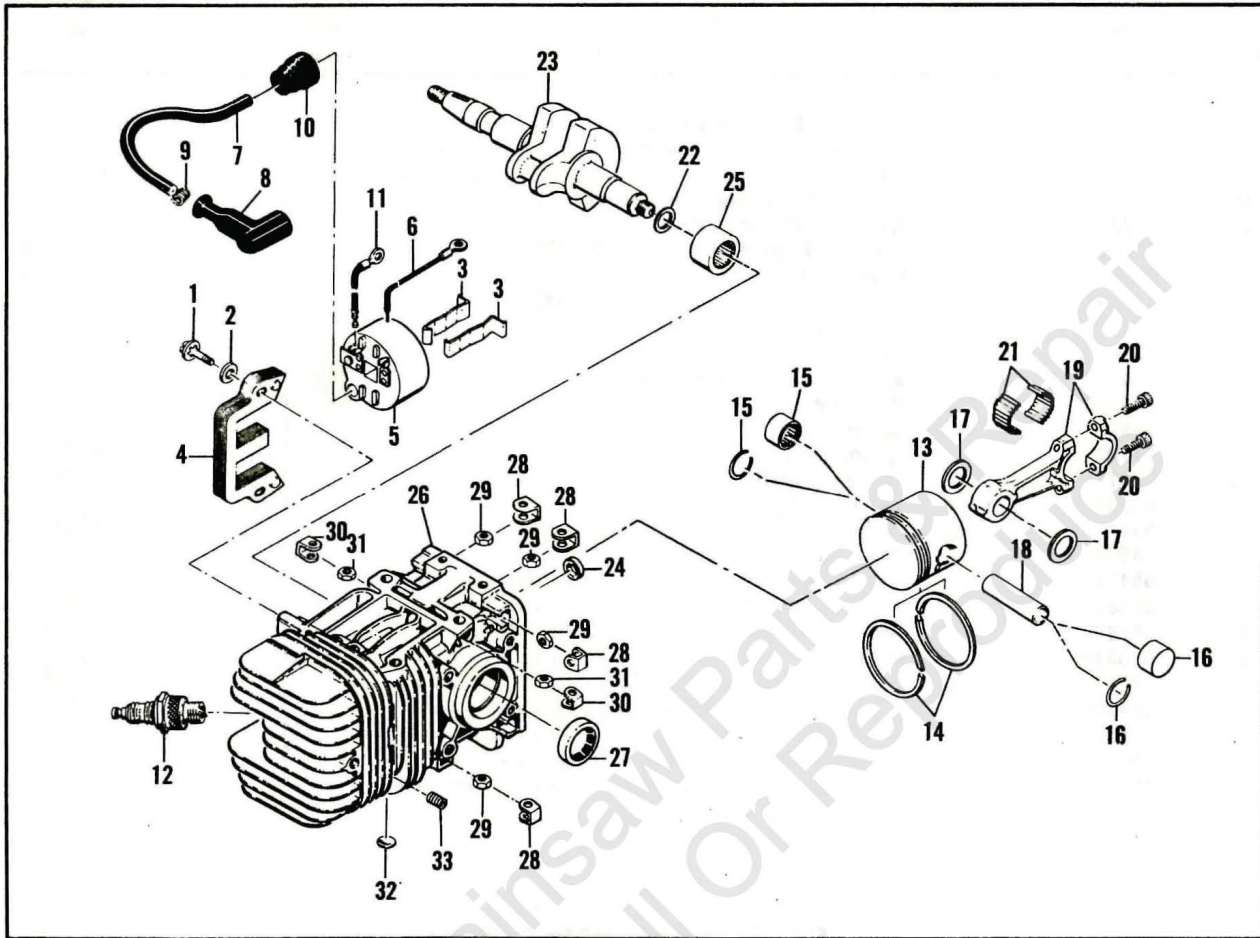


FIG. 8. POWERHEAD (CONTINUED)

Index No.	Part Number	Nomenclature	Units Per Assy	Usable on Code
12		Spark Plug - 14 mm . . . . .	1	ALL
13	50206	Piston Assy - Standard . . . . .	1	A,B
	48695	Piston Assy - Standard . . . . .	1	C,D
	53941A	Piston Assy - Standard . . . . .	1	E, F, G, H, I, J
14	55123	. Set - Piston ring (standard) . . . . .	1	A, B, E, F, G, H, I, J
	48691	. Set - Piston ring (standard) . . . . .	1	C, D
15	50133	. Ring - Retaining . . . . .	1	A, B
	101206	. Bearing - Needle . . . . .	1	C, D, E, F, G, H, I, J
16	50133	. Ring - Retaining . . . . .	1	A, B
	104378	. Bearing - Needle . . . . .	1	C, D, E, F, G, H, I, J
13	48684	Piston Assy - 0.010 oversize . . . . .	1	C, D
	53942A	Piston Assy - 0.010 oversize . . . . .	1	E, F, G, H, I, J
14	48692	. Set - Piston ring (0.010 oversize) . . . . .	1	C, D
	55124	. Set - Piston ring (0.010 oversize) . . . . .	1	E, F, G, H, I, J
15	101206	. Bearing - Needle . . . . .	1	C, D, E, F, G, H, I, J
	104378	. Bearing - Needle . . . . .	1	C, D, E, F, G, H, I, J
13	50134	Piston Assy - 0.020 oversize . . . . .	1	A, B
	48685	Piston Assy - 0.020 oversize . . . . .	1	C, D
	53943A	Piston Assy - 0.020 oversize . . . . .	1	E, F, G, H, I, J
14	55125	. Set - Piston ring (0.020 oversize) . . . . .	1	A, B, E, F, G, H, I, J
	48693	. Set - Piston ring (0.020 oversize) . . . . .	1	C, D
15	50133	. Ring - Retaining . . . . .	1	A, B
	101206	. Bearing - Needle . . . . .	1	C, D, E, F, G, H, I, J



# 200/300 SERIES

FIG. 8. POWERHEAD (CONT.)

Index No.	Part Number	Nomenclature	Units Per Assy	Usable on Code
16	50133	. Ring - Retaining . . . . .	1	A,B
	104378	. Bearing - Needle . . . . .	1	C,D,E,F,G,H,I,J
13	48686	Piston Assy - 0.030 oversize . . . . .	1	C,D
	53944A	Piston Assy - 0.030 oversize . . . . .	1	E,F,G,H,I,J
14	48694	. Set - Piston ring (0.030 oversize) . . . . .	1	C,D
	55126	. Set - Piston ring (0.030 oversize) . . . . .	1	E,F,G,H,I,J
15	101206	. Bearing - Needle . . . . .	1	C,D,E,F,G,H,I,J
16	104378	. Bearing - Needle . . . . .	1	C,D,E,F,G,H,I,J
17	51209	Washer - Thrust . . . . .	2	C,D
18	50207A	Pin - Piston . . . . .	1	A,B
	57198	Pin - Piston . . . . .	1	C,D
	62831	Pin - Piston . . . . .	1	E,F,G,H,I,J
19		Rod Assy - Piston (Order Rod Assy #47903) . . . . .	1	A,D
	47903	Rod Assy - Connecting . . . . .	1	B,C,E,F,G,H,I,J
20	60211A	. Screw - Connecting rod . . . . .	2	A,D
	60210A	. Screw - Special . . . . .	2	B,C,E,F,G,H,I,J
21	102742	. Roller - Needle (package of 25 rollers) . . . . .	24	ALL
22	63834	Washer . . . . .	1	A,C
23	50659A	Crankshaft . . . . .	1	A,B,C,D,E,F,G
	60313A	Crankshaft . . . . .	1	H,I,J
24	57736	Seal - Pushrod . . . . .	1	ALL
25	100824	Bearing - Ball . . . . .	1	H,I,J
26		Cylinder - Crankcase (Order Cylinder Crankcase #61911) . . . . .	1	A,C
	52886A	Cylinder - Crankcase . . . . .	1	B
	61911	Cylinder - Crankcase . . . . .	1	D,E
	62481	Cylinder Assy . . . . .	1	F,G
	62707	Crankcase Assy . . . . .	1	I
	53563A	Crankcase Assy . . . . .	1	H,J
27	104128	. Seal - Oil . . . . .	1	A,B,C,D,E,F,G
	104432	. Seal - Oil . . . . .	1	H,I,J
25	104129	. Bearing - Needle . . . . .	1	A,B,C,D,E,F,G
28	18556A	. Retainer - Nut . . . . .	6	ALL
29	101143	. Nut - Hex 1/4-20 . . . . .	6	A,C,D,H,J
	103242	. Nut - Hex 1/4-20 jam . . . . .	6	B,E
	105394	. Nut - Lock 1/4-20 . . . . .	6	F,G,I
30	28053	. Retainer - Nut . . . . .	2	ALL
31	101326	. Nut - Hex 10-24 . . . . .	2	A,C,D,F,G,H,I,J
	101191	. Nut - Hex 10-24 lock . . . . .	2	B,E
32	110179	. Plug - Expansion 3/8 dia . . . . .	2	B
	110179	. Plug - Expansion 3/8 dia . . . . .	3	E,F,G,H,I
33	110034	. Insert - Taplock 10-24 . . . . .	2	F,G,H,I

# 200/300 SERIES

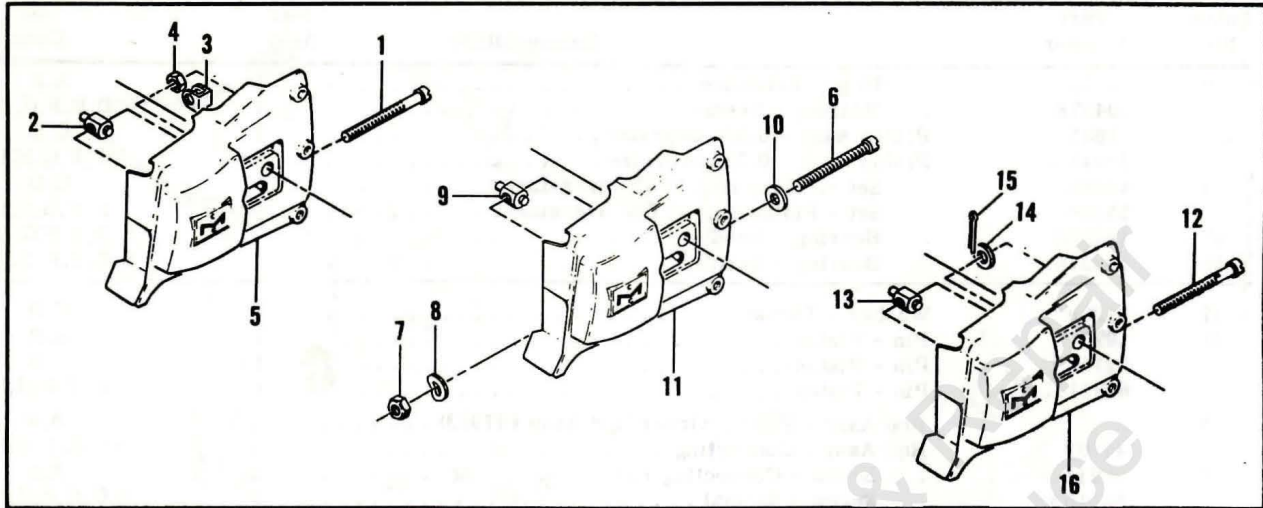


Figure 9. Clutch Guard

## FIGURE 9. CLUTCH GUARD

Index No.	Part Number	Nomenclature	Units Per Assy	Usable on Code
Code: "A" indicates parts used on early Model 200 chain saws.				
"B" indicates parts used on later Model 200 chain saws.				
"C" indicates parts used on 1962 Model 250 chain saws.				
"D" indicates parts used on 1963 Model 250 chain saws.				
"E" indicates parts used on 1964 Model 250 chain saws.				
"F" indicates parts used on Model 250 chain saws, serial 76,001 and up.				
"G" indicates parts used on Model 250 chain saws, serial prefixed 10-.				
"H" indicates parts used on Model 300 chain saws to serial 20,000.				
"I" indicates parts used on Model 300 chain saws, serial 20,001 and up.				
"J" indicates parts used on Model 380 chain saws.				
		Clutch Guard (Order Guard Assy #60133A) . . . . .	1	A,B,D,E,H,J
1	53853	. Screw - Fil hd 1/4-28 x 3.47 . . . . .	1	A,B,D,E,H,J
2	52207C	. Nut - Bar adjusting. . . . .	1	A,B,D,E,H,J
3	18556A	. Retainer - Nut . . . . .	1	A,B,D,E,H,J
4	100640	. Nut - Hex 1/4-28 lock . . . . .	1	A,B,D,E,H,J
5	60134	. Guard - Clutch. . . . .	1	A,B,D,E,H,J
		Clutch Guard (Order Guard Assy #60133A) . . . . .	1	C
6	53557	. Screw - Fil hd. . . . .	1	C
7	100640	. Nut - Hex 1/4-28 lock . . . . .	1	C
8	102813	. Washer - Spring. . . . .	1	C
9	52207C	. Nut - Bar adjusting. . . . .	1	C
10	102843	. Washer - 1/4 plain. . . . .	1	C
11		. Guard (Order Guard Assy #60133A) . . . . .	1	C
	60133A	Guard Assy - Clutch. . . . .	1	F,G,I
12	62057	. Screw - Special 1/4-28 x 3-1/2. . . . .	1	F,G,I
13	52207C	. Nut - Bar adjusting. . . . .	1	F,G,I
14	100004	. Washer - 1/4 plain. . . . .	1	F,G,I
15	105686	. Pin - Cotter 1/16 x 1/2. . . . .	1	F,G,I
16	60134	. Guard - Clutch. . . . .	1	F,G,I



The information contained in this Master Illustrated Parts List is based on original Illustrated Parts Lists, Engineering Records and the Master Parts Price List and is accurate to the best of our knowledge.

This Master Illustrated Parts List carries all the available parts for servicing and repairing the listed chain saw engines. When assemblies are no longer sold but parts are available for repair of the assemblies, the individual parts are listed under the no-longer available assembly and the replacement assembly is carried in parenthesis directly after the name of the part. Replacement assemblies when used in the production of other models appear in sequence in the various lists.

Each chain saw model is given a code letter. Whenever the code letter appears in the right hand column, the part is used on the engines of the model for which the code letter stands. When a part is used on all models covered in the Master Illustrated Parts List, the word "All" appears in the right-hand column instead of the code letters.

Names of parts have been checked and made to agree with the names given in the Master Parts Price List except in a very few cases where additional nomenclature was required.

The illustrations of the individual parts do not necessarily picture all the differences between parts with the same item number because the illustrations would be too complicated for use if they did. Instead, the illustration shows a representative part for each item number.