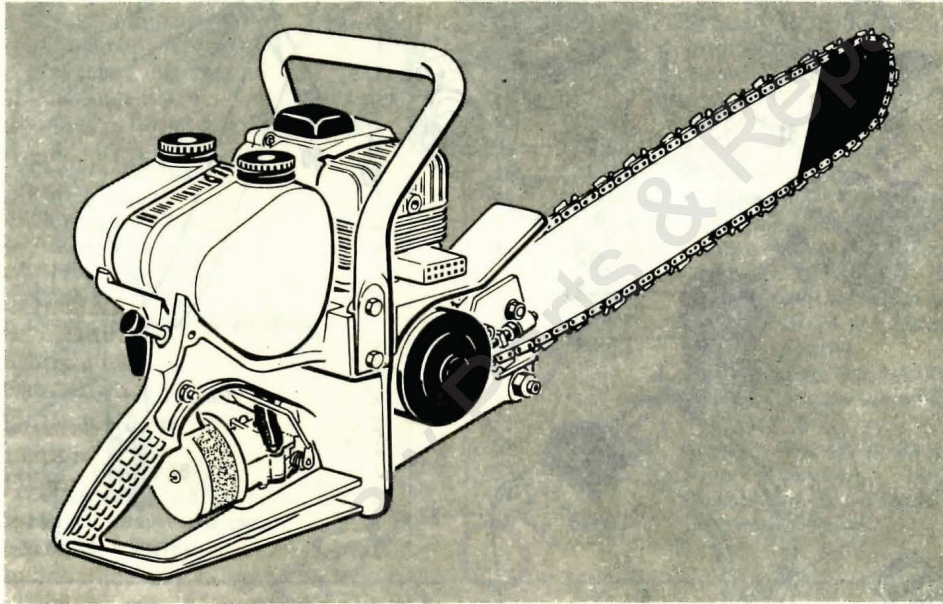


MAC 15 Chain Saw

MODEL NUMBERS 600090, 600095 SERIAL NUMBERS PREFIXED 13- & A13-

ILLUSTRATED PARTS LIST



NOVEMBER 1968

The policy of McCulloch Corporation is one of continual improvement in design, manufacturing and engineering advancement wherever possible to assure still finer two-cycle power tools. Hence, specifications, equipment, colors, design and manufacturer's suggested list prices are subject to change without notice and McCulloch Corporation reserves the right to make such changes without prior notification or obligation to backfit or supply backfit components for units previously shipped from the factory.

	Page
Figure 1. Engine Exploded View - General	2
Figure 2. Fan Housing, Starter, Flywheel and Crankcase Cover	4
Figure 3. Powerhead	6
Figure 4. Carburetor and Air Filter	8



McCULLOCH

MAC 15

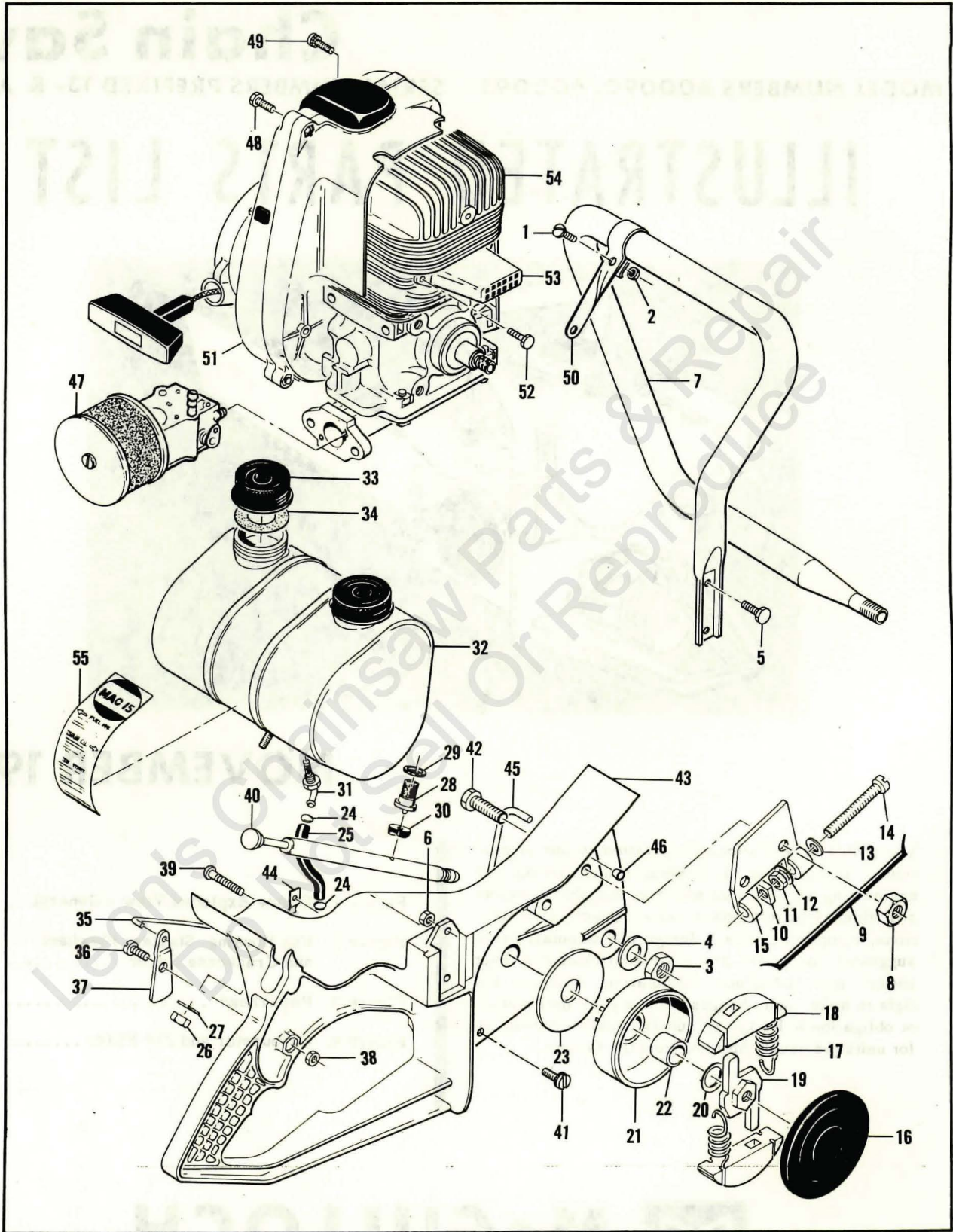


Figure 1. Engine Exploded View - General

FIGURE 1. ENGINE EXPLODED VIEW — GENERAL

Item No.	Part Number	Description	Units Per Assy	Item No.	Part Number	Description	Units Per Assy
1	- 104395	Screw - Pan hd 10-24 x 5/8	1	30	52822	Gland - Oiler	1
2	101191	Locknut - 10-24	1	31	52887	Fitting - Fuel outlet	1
3	100604	Jamnut - 1/2-20	1	32	62776	Tank Assy	1
4	110010	Washer - Spring 1/2	1	33	52923A	. Cap - tank	2
5	102861	Screw - Hex hd 1/4-20 x 5/8	2	34	52964	. Gasket	2
6	103242	Nut - Hex 1/4-20	1	35	- 68986	Rod - Throttle	1
7	52804	Frame	1	36	52888	Screw - Trigger	1
8	103729	Nut - Hex 3/8-24	2	37	52823	Trigger	1
9	66275	Clamp Assy - Bar	1	38	101191	Nut - Hex 10-24	1
10	52828	. Nut - Adjusting	1	39	101449	Screw - Rd hd 8-32 x 5/8	1
11	100640	. Locknut - 1/4-28	1	40	65381	Pump Assy - Oiler	1
12	102813	. Washer - Spring	1	41	110208	Screw - Flat hd 1/4-20 x 3/4 (SEMS)	4
13	102843	. Washer - 1/4	1	42	52957	Bolt - Bar mounting	2
14	103919	. Bolt - Fil hd 1/4-28 x 2-1/2	1	43	68007	Handle Assy - Saw	1
15	66276	. Clamp - Bar	1	44	110180	. Nut - Speed	1
16	52837	Cover - Clutch	1	45	68005	. Tube Assy - Oiler	1
	52844	Clutch Assy	1	46	52876	. Sleeve - Tube	1
17	63999	. Spring - Clutch	2	47		Carburetor & Air Filter (See Figure 4)	
18	52845	. Shoe - Clutch	2	48	104815	Screw - Hex hd 10-24 x 7/8	3
19	52846	. Rotor - Clutch	1	49	103947	Screw - 10-24 x 1 (SEMS)	1
20	101270	Washer - 7/16	1	50	52883	Brace - Frame	1
21	52878	Drum, Sprocket & Bushing Assy	1	51		Fan Housing, Starter, Flywheel & Crankcase Cover (See Figure 2)	
22	50128	. Bushing	1	52	104840	Screw - Hex hd 10-24 x 3/4	2
23	50132	Washer - Sprocket	1	53	50115	Pipe - Exhaust	1
24	50742	Clamp - Hose	2	54		Powerhead (See Figure 3)	1
25	52808	Hose - Fuel	1	55	- 69603	Instruction Decal	1
26	101330	Nut - Hex 5/16-18	1				
27	100443	Lockwasher - 5/16	1				
28	65382	Filter Assy - Oil tank	1				
29	62779	Gasket - Filter	1				

Part numbers which have changed since the previous printing of the illustrated parts list covering these saws, are indicated by a dash (-) preceding the new part number.

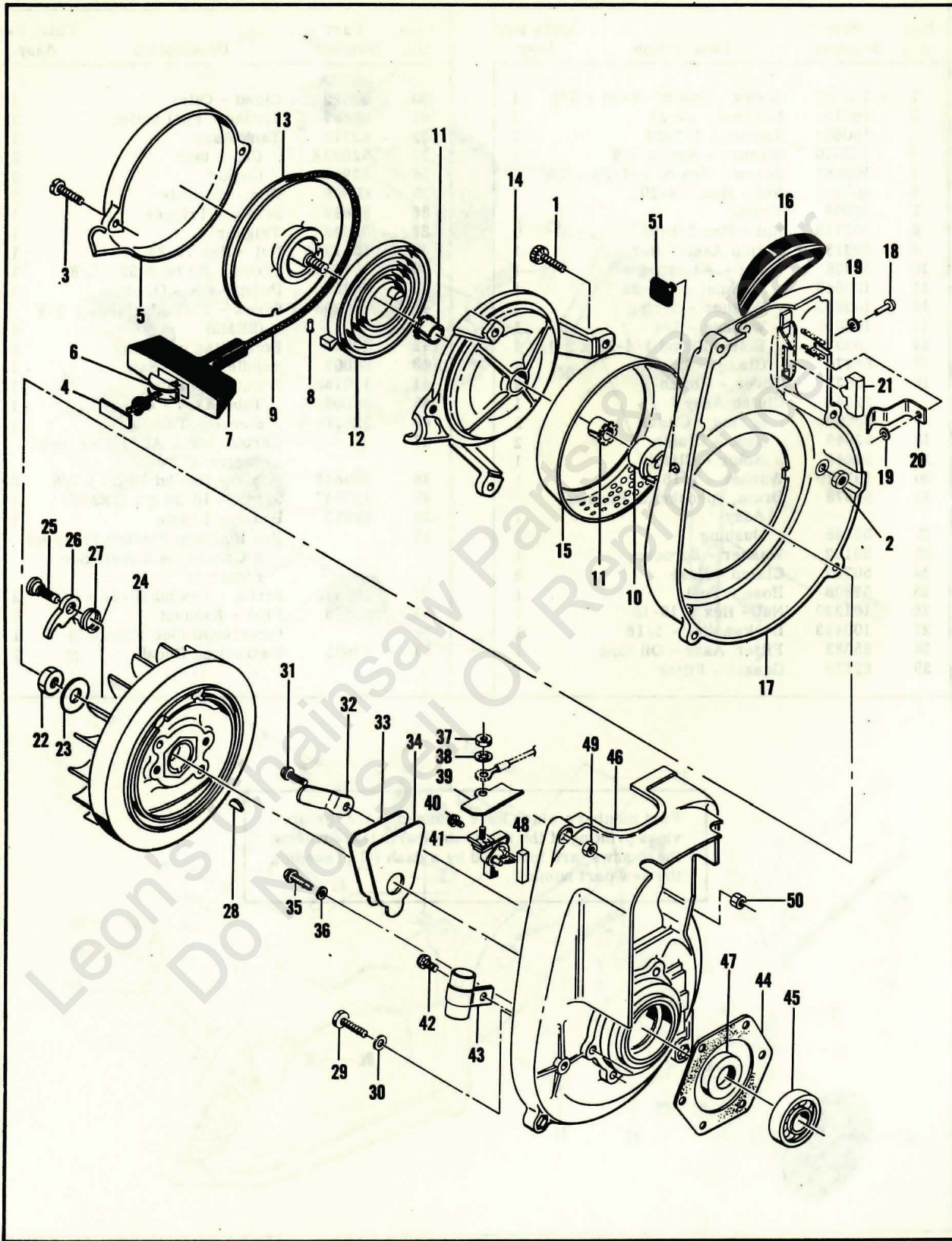


Figure 2. Fan Housing, Starter, Flywheel and Crankcase Cover

FIGURE 2. FAN HOUSING, STARTER, FLYWHEEL AND CRANKCASE COVER

Item No.	Part Number	Description	Units Per Assy
1	104815	Screw - Hex hd 10-24 x 7/8	3
2	101191	Nut - Hex 10-24	3
	60130	Starter Assy	1
3	104396	. Screw - Pan hd 10-24 x 3/4	2
4	57232	. Plate - Starter handle	1
5	60647	. Cover - Starter	1
6	57231	. Cup - Starter handle	1
7	57230	. Handle - Starter	1
8	101136	. Rivet - Rd hd 3/32 dia x 5/16	1
9	28716	. Rope - Starter	1
10	57790	. Ratchet - Starter	1
11	57535	. Bushing - Starter base	2
12	51665	. Spring - Rewind	1
13	57792	. Drum - Starter	1
14	60646	. Base - Starter	1
15	50581A	Guard - Sawdust	1
16	57565	Cover Assy - Spark plug	1
17	57184B	Housing Assy - Fan	1
18	103819	. Rivet	1
19	24236	. Washer	2
20	50818	. Spring - Switch	1
21	50817	. Button - Switch	1
22	101179	Nut - Hex 7/16-20	1
23	101270	Washer - 7/16	1
24	68282	Flywheel & Pawl Assy	1
25	36144B	. Pin - Starter pawl	2

Item No.	Part Number	Description	Units Per Assy
26	24093	. Pawl - Starter	2
27	50582	. Spring - Pawl	2
28	103879	Key - Woodruff #3	1
29	102289	Screw - Hex hd 10-24 x 3/4	3
30	102189	Washer - #10	3
31	104815	Screw - Hex hd 10-24 x 7/8	1
32	50671	Retainer - Breaker cover	1
33	50588A	Cover - Breaker box	1
34	65584	Gasket - Breaker box	1
35	55494	Screw Assy - Sealing #10	2
36	55492	. Washer - Sealing	2
37	100251	Nut - Hex 8-32	1
38	100057	Lockwasher - Internal #8	1
39	50381A	Insulator - Breaker terminal	1
40	103928	Screw - 8-32 x 1/2 (SEMS)	1
41	50076A	Breaker Assy	1
42	103928	Screw - 8-32 x 1/2 (SEMS)	1
43	50074	Condenser	1
44	51240	Gasket - Cover	1
45	100824	Bearing - Ball	1
46	57126A	Crankcase Cover Assy	1
47	50663	. Seal - Oil	1
48	54184	. Wiper - Felt	1
49	101326	. Nut - Hex 10-24	2
50	101326	Nut - Hex 10-24	2
51	55670	Grommet	1

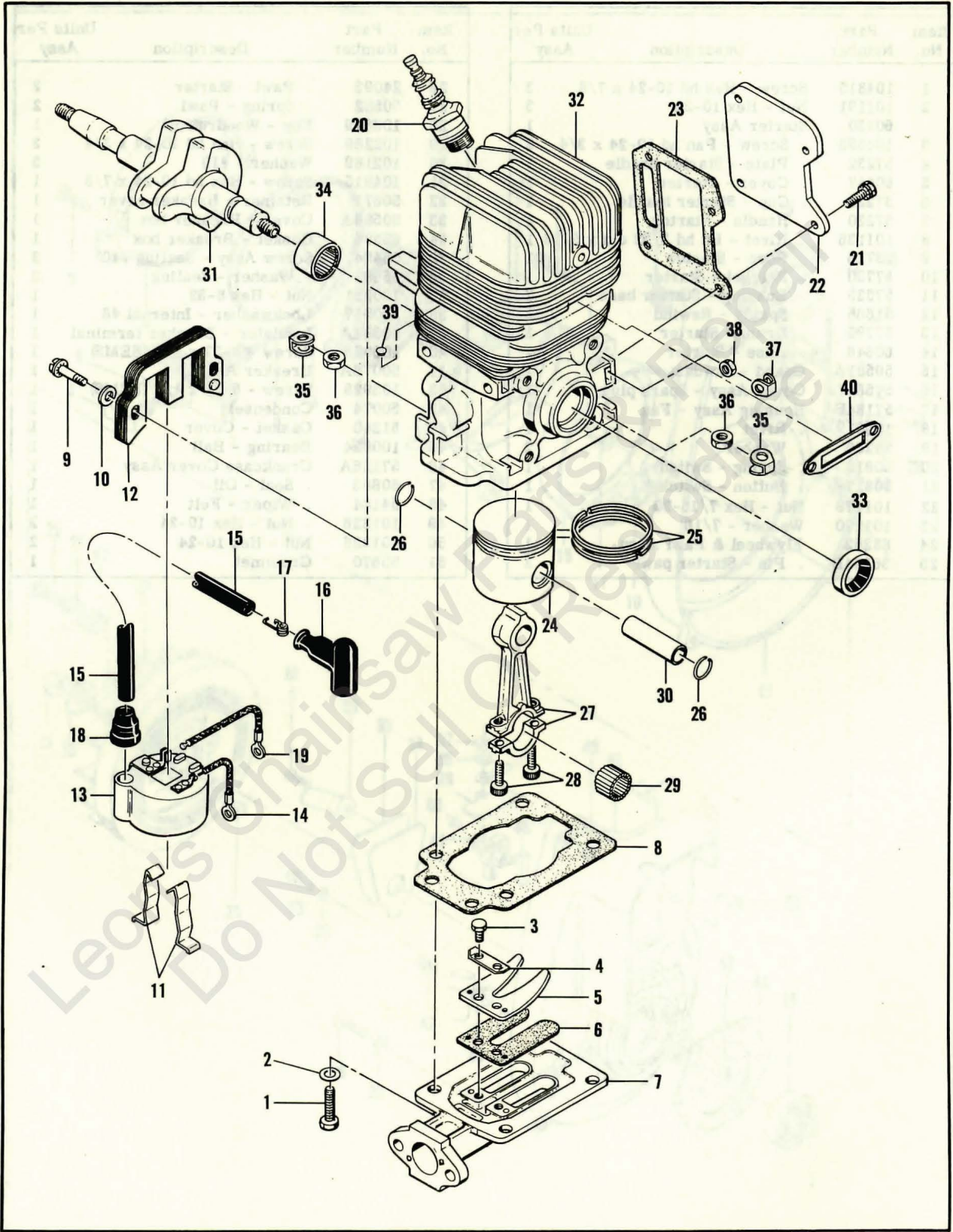


Figure 3. Powerhead

FIGURE 3. POWERHEAD

Item No.	Part Number	Description	Units Per Assy
1	102121	Screw - Hex 1/4-20 x 7/8	4
2	100005	Washer - 1/4	4
3	104476	Screw - Hex hd 8-32 x 5/16	2
4	51480	Lockplate	1
5	48591	Guard - Reed	1
6	48593	Valve - Reed	1
7	68979	Adapter - Carburetor	1
8	65578	Gasket - Carburetor adapter	1
9	104815	Screw - 10-24 x 7/8 (SEMS)	2
10	100352	Washer - #10	2
11	51253	Retainer - Coil	2
12	51251	Lamination Assy	1
13	57643A	Kit - Coil & Terminal Assy	1
14	101883	. Wire Assy - Ground	1
15	57648	. Wire - Spark plug	1
16	55060	. Boot - Spark Plug	1
17	55061	. Connector	1
18	55617	. Nipple - Spark plug wire	1
19	57225	. Wire Assy - Primary	1
20		Plug - Spark 14 mm	1

Item No.	Part Number	Description	Units Per Assy
21	103814	Screw - 10-24 x 5/8 (SEMS)	4
22	8354	Cover - Transfer port	1
23	48605	Insulator - Reed plate	1
24	50206	Piston Assy - Standard	1
25	55123	. Ring Set - Standard piston	1
26	50133	. Ring - Retaining	2
27	47903	Connecting Rod Assy	1
28	60210A	. Screw - Socket hd 10-32 x 5/8	2
29	102742	. Roller - Needle	24
30	50207A	Pin - Piston	1
31	50659A	Crankshaft	1
32	52886A	Cylinder Crankcase Assy	1
33	104128	. Seal - Oil	1
34	104129	. Bearing - Needle	1
35	18556A	. Retainer - Nut	6
36	105394	. Nut - Hex 1/4-20	6
37	28053	. Retainer - Nut	2
38	101326	. Nut - Hex 10-24	2
39	110179	. Plug - Expansion	2
40	53652	Gasket - Exhaust	1

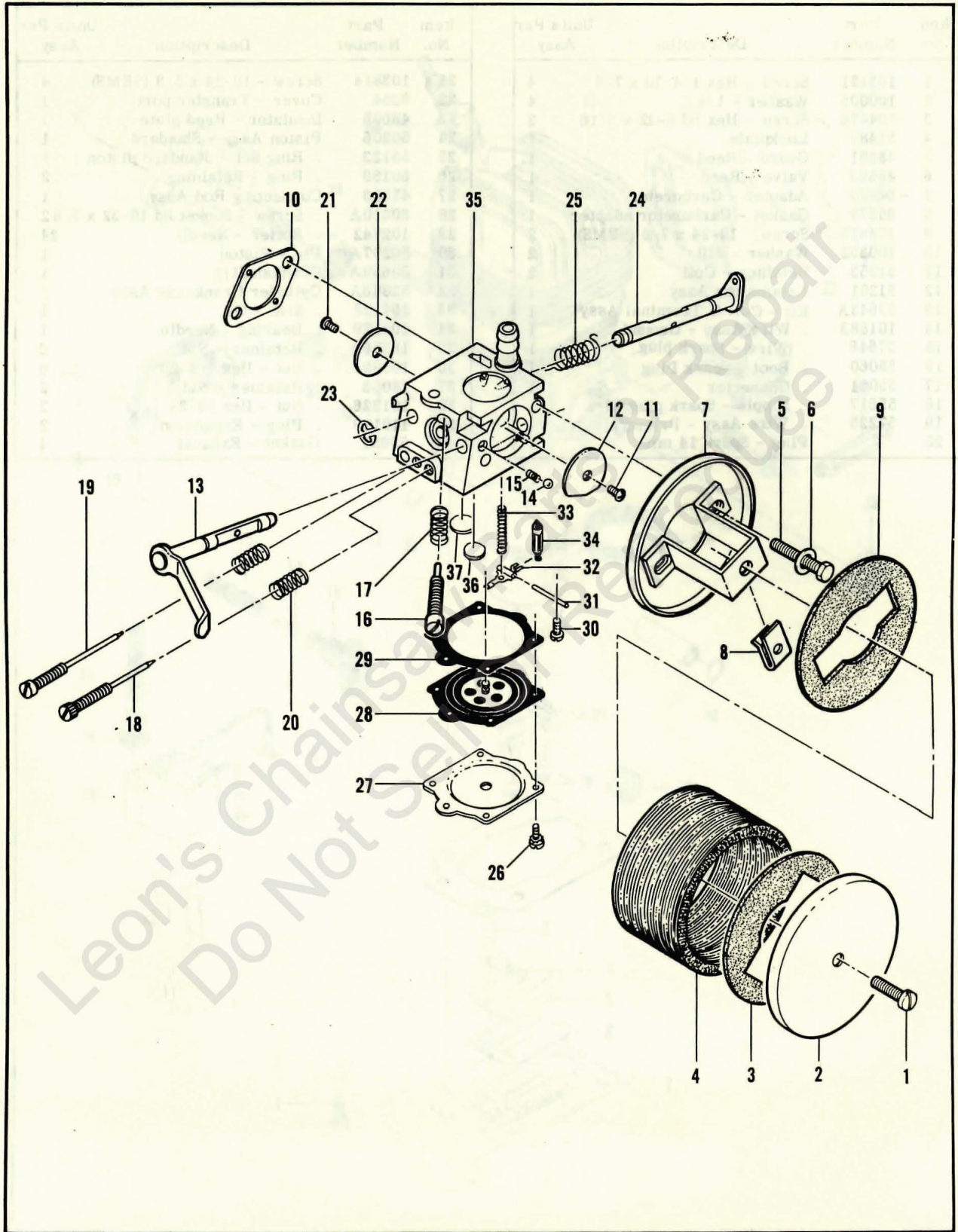


Figure 4. Carburetor and Air Filter

FIGURE 4. CARBURETOR AND AIR FILTER

Item No.	Part Number	Description	Units Per Assy
1	104393	Screw - Pan hd 10-24 x 3/8	1
2	63091	Cover Assy - Air cleaner	1
3	63090	. Gasket - Air cleaner cover	1
4	52961	Screen - Air cleaner	1
5	- 102586	Screw - Hex hd 10-24 x 2	2
6	36388	Lockplate	2
7	- 68982	Plate Assy - Air cleaner	1
8	104171	. Nut - Speed	1
9	63090	. Gasket - Air cleaner	1
10	- 68132	Gasket - Carburetor	1
	- 68981	Carburetor Assy	1
11	- 47690	. Screw - Choke plate	1
12	- 69505	. Plate - Choke	1
13	- 69504	. Shaft Assy - Choke	1
14	- 100302	. Ball - Detent	1
15	- 67504	. Spring - Detent	1
16	- 68106	. Screw - Idle speed	1
17	- 67502	. Spring - Idle speed screw	1
18	- 68104	. Needle - High speed adjustment	1

Item No.	Part Number	Description	Units Per Assy
19	- 68105	. Needle - Idle adjustment	1
20	- 67502	. Spring - Needle	2
21	- 47690	. Screw - Throttle plate	1
22	- 67487	. Plate - Throttle	1
23	- 68211	. Ring - Retaining	1
24	- 69503	. Shaft Assy - Throttle	1
25	- 69507	. Spring - Throttle return	1
26	- 70798	. Screw - Diaphragm cover	4
27	- 67485	. Cover - Diaphragm	1
28	- 67499	. Diaphragm - Metering	1
29	- 67496	. Gasket - Diaphragm	1
30	- 67500	. Screw - Lever pin	1
31	- 67508	. Pin - Lever	1
32	- 67509	. Lever - Metering	1
33	- 67503	. Spring - Lever	1
34	- 67491	. Valve - Needle	1
35	- 69502	. Body Assy - Carburetor	1
36	- 67492	. Plug - 3/8	1
37	- 69506	. Plug - 5/16	1
	69508	Repair Kit	

ACCESSORIES

No.	Part Number	Description
	* 66977	Bar
	* 65120M	Chain
	51445A	Combination Wrench-Screwdriver
	69048	Owner's Manual
	52958	Spike

Part Number	Description
50134	Piston Assy - 0.020 in. oversize
55125	. Ring Set - 0.020 in oversize
36248	Wrench - Spark plug
63165	Spark Arrester
65712	Timing Guide

* Furnished with Model No. 600095D only.



McCULLOCH



● MANUFACTURING ● SALES ● SERVICE ●

McCULLOCH CORPORATION

6101 WEST CENTURY BLVD., LOS ANGELES, CALIFORNIA 90045

INTERNATIONAL DIVISIONS:

LOS ANGELES, CALIF., P. O. BOX 45466

HONG KONG, B. C. C.: G. P. O. BOX 879

McCULLOCH OF CANADA LTD.

6338 VISCOUNT ROAD, MALTON, ONTARIO, CANADA

McCULLOCH OF EUROPE, N. V.

ANTOON SPINOYSTRAAT 5, MECHELEN, BELGIUM

McCULLOCH OF AUSTRALIA PTY., LTD.

P.O. BOX 165, GRANVILLE, N.S.W., 2142, AUSTRALIA

Leon's Chassis & Parts Repair
Do Not Sell or Reproduce