

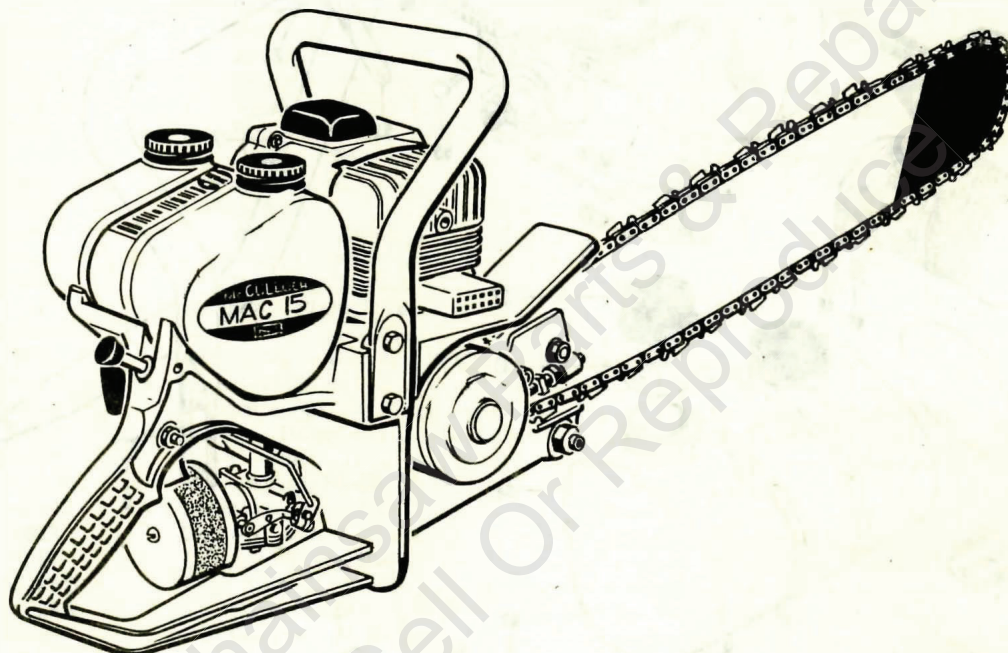
Chain Saw

MAC 15

(P/N 52800A)

ILLUSTRATED PARTS LIST

FEBRUARY 1964



The following pages contain an illustrated parts list for the MAC 15 Chain Saw Serial No. 35001 and up. It is important that the Serial Number of your saw be included whenever spare parts are ordered.

The McCulloch Corporation reserves the right to modify or change specifications without (1) prior notification or (2) obligation to back-fit or supply back-fit components for units previously shipped from the factory.

	Page
Figure 1. Engine Exploded View - General	2
Figure 2. Fan Housing, Starter, Flywheel and Crankcase Cover	4
Figure 3. Powerhead	6
Figure 4. Carburetor and Air Filter	8



McCULLOCH CORPORATION
6101 West Century Boulevard,
Los Angeles 45, California

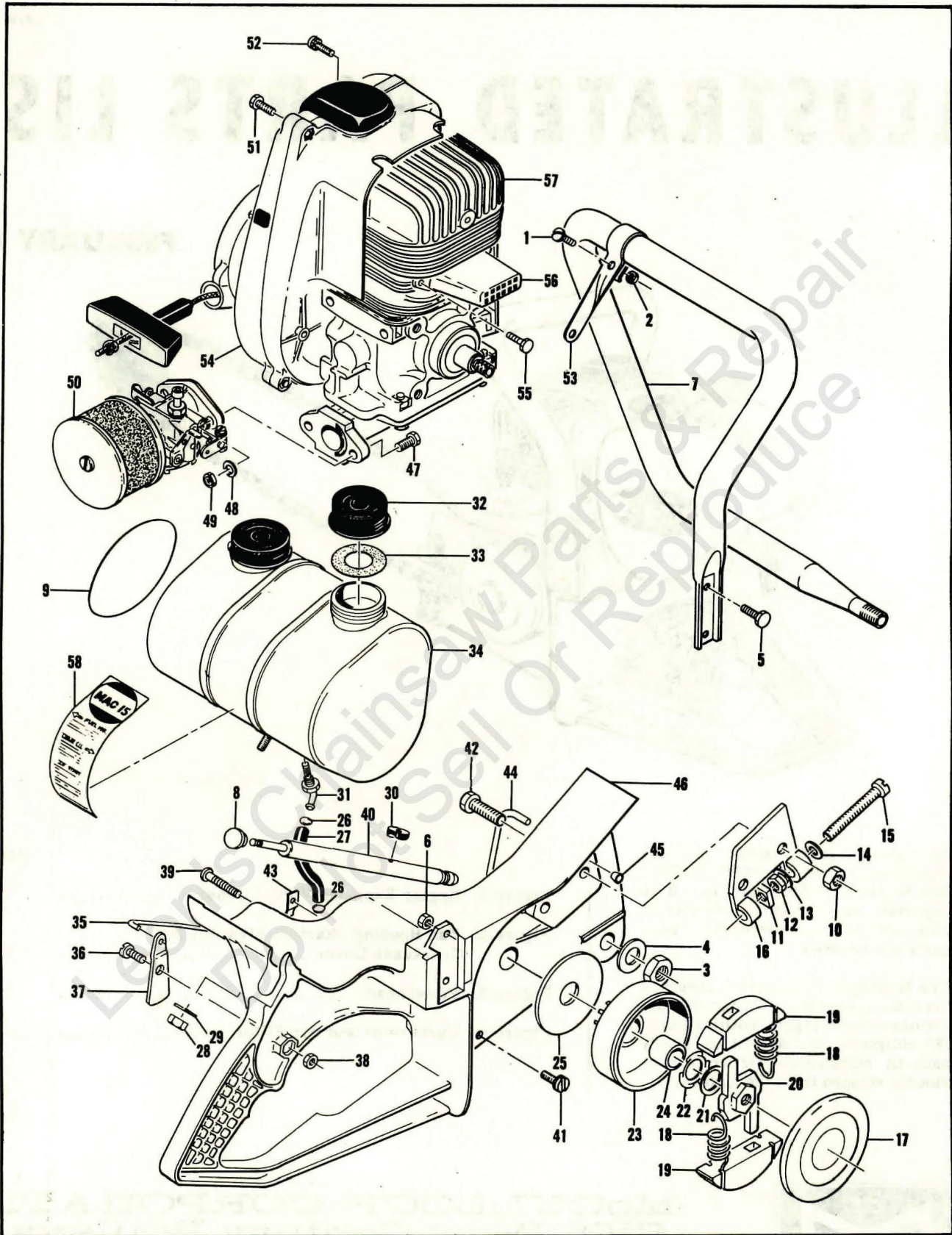


Figure 1. Engine Exploded View - General

FIGURE 1. ENGINE EXPLODED VIEW — GENERAL

Index No.	Part Number	Nomenclature	Units Per Assy
1	100716	Screw - Rd hd 10-24 x 5/8 in. lg.	1
2	101191	Locknut - 10-24	1
3	100604	Jamnut - 1/2-20	1
4	110010	Washer - Spring 1/2	1
5	102861	Screw - Hex hd 1/4-20 x 5/8 in. lg.	2
6	103242	Nut - Hex 1/4-20	2
7	52804	Frame	1
8	19970A	Button - Oiler	1
9	52862	Nameplate	1
10	103729	Nut - Hex 3/8-24	2
	52826	Clamp Assy - Bar	1
11	52828	. Nut - Adjusting	1
12	100640	. Locknut - 1/4-28	1
13	102813	. Washer - Spring	1
14	102843	. Washer - Plain 1/4	1
15	103919	. Bolt - Fil hd 1/4-28 x 2-1/2 in. lg.	1
16		. Clamp - Bar	1
17	52837	Cover - Clutch	1
	52844	Clutch Assy	1
18	52847	. Spring - Clutch	2
19	52845	. Shoe - Clutch	2
20	52846	. Rotor - Clutch	1
21	101270	Washer - Plain 7/16	1
22	103718	Spring	1
23	52878	Drum, Sprocket, and Bushing Assy	1
24	50128	. Bushing	1
25	50132	Washer - Sprocket	1
26	50742	Clamp - Hose	2
27	52808	Hose - Fuel	1
28	101330	Nut - Hex 5/16-18	1
29	100443	Lockwasher - 5/16	1
30	52822	Gland - Oiler	1
31	52887	Fitting - Fuel outlet	1
	52825B	Tank Assy	1
32	52923A	. Cap - Tank	2
33	52964	. Gasket - Fuel Cap	1
34		. Tank	1
35	52824	Rod - Throttle	1
36	52888	Screw - Trigger	1
37	52823	Trigger	1
38	101191	Nut - Hex 10-24	1
39	101449	Screw - Rd hd 8-32 x 5/8 in. lg.	1
40	52834B	Pump Assy - Oiler	1
41	110208	Screw - Flat hd 1/4-20 x 3/4 in. lg. (SEMS)	4
42	52957	Bolt - Bar mounting	2
	52877A	Handle Assy - Saw	1
43	110180	. Nut - Speed	1
44	52819	. Tube Assy - Oiler	1
45	52876	. Sleeve - Tube	1
46		. Handle	1
47	102121	Screw - Hex hd 1/4-20 x 7/8 in. lg.	2
48	100005	Washer - Plain 1/4	2
49	103242	Nut - Hex 1/4-20	2
50		Carburetor and Air Filter (See Figure 4)	1
51	104815	Screw - Hex hd 10-24 x 7/8 in. lg.	3
52	103947	Screw - 10-24 x 1 in. lg. (SEMS)	1
53	52883	Brace - Frame	1
54		Fan Housing, Starter, Flywheel and Crankcase Cover (See Figure 2)	1
55	104840	Screw - Hex hd 10-24 x 3/4 in. lg.	2
56	50115	Pipe - Exhaust	1
57		Powerhead (See Figure 3)	1
58	52926	Instruction Decal	1

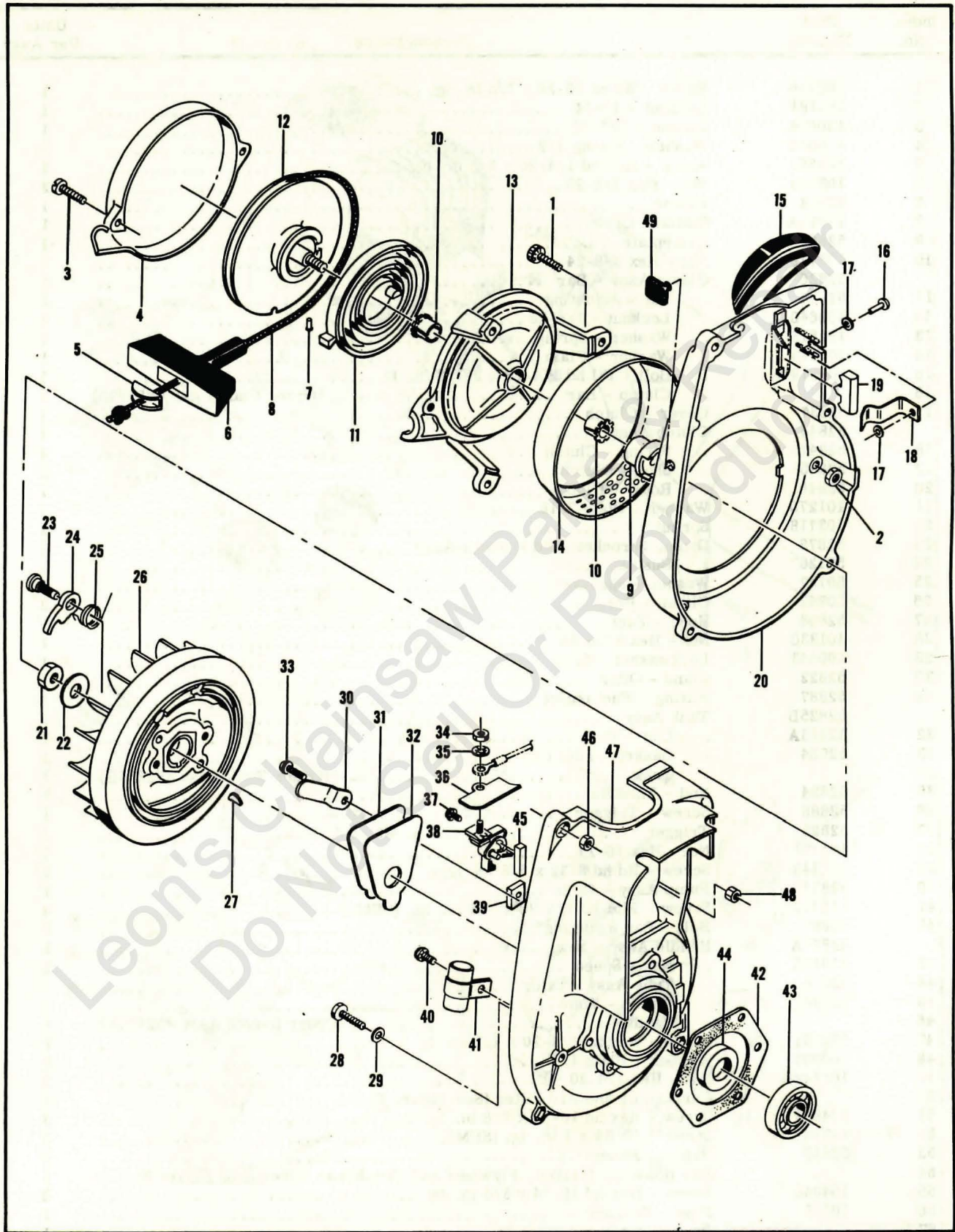


Figure 2. Fan Housing, Starter, Flywheel and Crankcase Cover

FIGURE 2. FAN HOUSING, STARTER, FLYWHEEL AND CRANKCASE COVER

Index No.	Part Number	Nomenclature	Units Per Assy
1	104815	Screw - Hex hd 10-24 x 7/8 in. lg. (SEMS)	3
2	101191	Nut - Hex 10-24	3
	60130	Starter Assy	1
3	104396	. Screw - Pan hd 10-24 x 3/4 in. lg.	2
4	60647	. Cover - Starter	1
5	57231	. Cup - Starter handle	1
6	57230	. Handle - Starter	1
7	101136	. Rivet - Rd hd 3/32 dia x 5/16 in. lg.	1
8	28716	. Rope - Starter	1
9	57790	. Ratchet - Starter	1
10	57535	. Bushing - Starter base	2
11	51665	. Spring - Rewind	1
12	57792	. Drum - Starter	1
13	60646	. Base - Starter	1
14	50581A	Guard - Sawdust	1
15	57565	Cover Assy - Spark plug	1
	57184B	Housing Assy - Fan	1
16	103819	. Rivet	1
17	24236	. Washer	2
18	50818	. Spring - Switch	1
19	50817	. Button - Switch	1
20		. Housing - Fan (Order Fan Housing Assy #57184B)	1
21	101179	Nut - Hex 7/16-20	1
22	101270	Washer - Plain 7/16	1
23	36144B	Pin - Starter pawl	2
24	24093	Pawl - Starter	2
25	50582	Spring - Pawl	2
26	48785C	Flywheel Assy	1
27	103879	Key - Woodruff #3	1
28	102289	Screw - Hex hd 10-24 x 3/4 in. lg.	4
29	102189	Washer - Plain #10	3
30	50671	Retainer - Breaker cover	1
31	50588	Cover - Breaker box	1
32	50589	Gasket - Breaker box	1
33	55494	Screw Assy - Sealing #10	2
34	100251	Nut - Hex 8-32	1
35	100057	Lockwasher - Internal #8	1
36	50381A	Insulator - Breaker terminal	1
37	103928	Screw - 8-32 x 1/2 in. lg. (SEMS)	1
38	50076A	Breaker Assy	1
39	50664	Felt - Breaker box	1
40	103928	Screw - 8-32 x 1/2 in. lg. (SEMS)	1
41	50074	Condenser	1
42	51240	Gasket - Cover	1
43	100824	Bearing - Ball	1
	57126A	Crankcase Cover Assy	1
44	50663	. Seal - Oil	1
45	54184	. Wiper - Felt	1
46	101326	. Nut - Hex 10-24	2
47		. Crankcase Cover (Order Crankcase Cover Assy #57126A)	1
48	101191	Nut - Hex 10-24	2
49	55670	Grommet	1

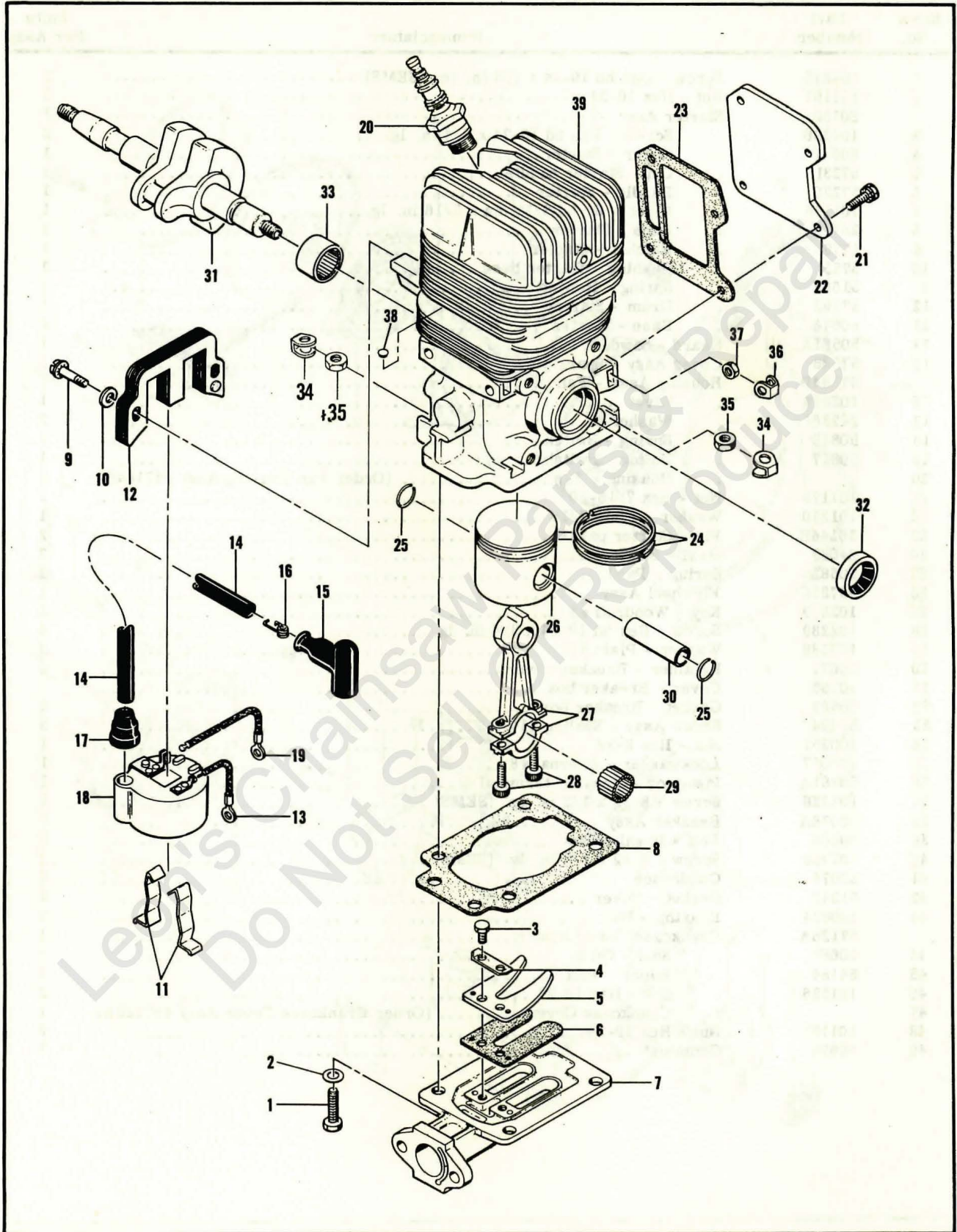


Figure 3. Powerhead

FIGURE 3. POWERHEAD

Index No.	Part Number	Nomenclature	Units Per Assy
1	102121	Screw - Hex 1/4-20 x 7/8 in. lg.	4
2	100005	Washer - Plain 1/4 in.	4
3	104476	Screw - Hex hd 8-32 x 5/16 in. lg.	2
4	51480	Lockplate	1
5	48591	Guard - Reed	1
6	48593	Valve - Reed	1
7	52802A	Adapter - Carburetor	1
8	48909A	Gasket - Carburetor adapter	1
9	104815	Screw - 10-24 x 7/8 in. lg. (SEMS)	2
10	102189	Washer - Plain #10	2
11	51253	Retainer - Coil	2
12	51251	Lamination Assy	1
	55949A	Coil and Terminal Assy	1
13	101883	. Wire Assy - Ground	1
14	52547	. Wire Assy - Spark plug	1
15	55060	. . Boot - Spark plug	1
16	55061	. . Connector	1
17	55617	. Nipple - Spark plug wire	1
18		. Coil Assy (Order Coil and Terminal Assy #55949A)	1
19	57225	Wire Assy - Primary	1
20		Plug - Spark 14mm	1
21	103814	Screw - (SEMS) 10-24 x 5/8 in. lg.	4
22	8354	Cover - Transfer port	1
23	48605	Insulator - Reed plate	1
	50206	Piston Assy - Standard	1
24	*55123	. Ring Set - Standard piston	1
25	50133	. Ring - Retaining	2
26		. Piston (Order Piston Assy #50206)	1
27	47782A	Connecting Rod Assy	1
28	60210A	. Screw - Socket hd 10-32 x 0.63 in. lg.	2
29	102742	. Roller - Needle	24
30	50207A	Pin - Piston	1
31	50659A	Crankshaft	1
	52886A	Cylinder Crankcase Assy	1
32	104128	. Seal - Oil	1
33	104129	. Bearing - Needle	1
34	18556A	. Retainer - Nut	4
35	103242	. Nut - Hex 1/4-20	4
36	28053	. Retainer - Nut	2
37	101191	. Nut - Hex 10-24	2
38	110179	. Plug - Expansion	2
39		. Crankcase (Order Crankcase Assy #52886A)	1

*For replacement of original piston ring, order Ring, P/N 60648.

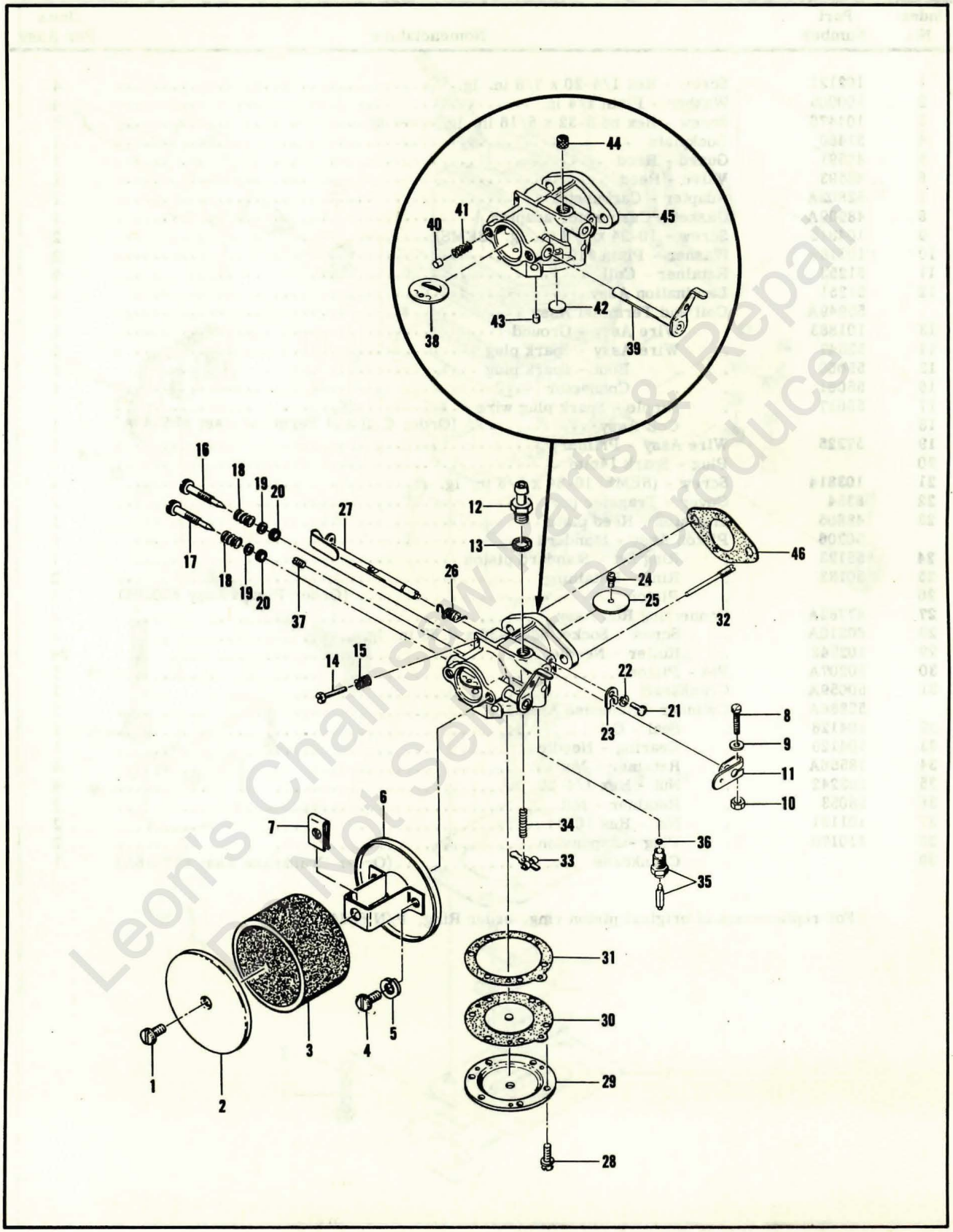


Figure 4. Carburetor and Air Filter

FIGURE 4. CARBURETOR AND AIR FILTER

Index No.	Part Number	Nomenclature	Units Per Assy
1	104393	Screw - Pan hd 10-24 x 3/8 in. lg.	1
2	52859	Cover - Air cleaner	1
3	52961	Screen - Air cleaner	1
4	100050	Screw - Fil hd 10-32 x 3/8 in. lg.	2
5	101194	Lockwasher #10	2
6	52881A	Plate Assy - Air cleaner	1
7	104171	. Nut - Speed	1
	52889	Lever Assy - Clamp	1
8	105861	. Screw - Rd Hd 6-32 x 5/8 in. lg. (SEMS)	1
9	103693	. Washer - Plain #6	1
10	100298	. Nut - Hex 6-32	1
11		. Clamp - Lever	1
	52807	Carburetor Assy	1
12	52939	. Connection - Inlet	1
13	52941	. Gasket - Inlet connection	1
14	*52940	. Screw - Idle speed	1
15	*51705	. Spring - Idle speed screw	1
16	*52935	. Needle - Idle adjusting	1
17	*52943	. Needle - Main adjusting	1
18	*52936	. Spring - Adjustment needle	2
19	52937	. Washer - Adjustment needle	2
20	52938	. "O" Ring	2
21	51717	. Screw - Throttle shaft clip	1
22	100252	. Lockwasher - Throttle shaft clip	1
23	51716	. Clip - Throttle shaft	1
24	*51721	. Screw - Shutter	1
25	51720	. Shutter - Throttle	1
26	*52948	. Spring - Throttle shaft	1
27	52947	. Shaft Assy - Throttle	1
28	52933	. Screw - Diaphragm cover	6
29	52932	. Cover - Diaphragm	1
30	*51590A	. Diaphragm Assy	1
31	51591A	. Gasket - Diaphragm	1
32	*51710	. Pinion - Inlet control lever	1
33	*51709	. Lever - Inlet control	1
34	*51711	. Spring - Inlet control lever	1
35	*52942	. Needle and Seat Assy - Inlet	1
36	51708	. Gasket	1
37	51589	. Screw - Diaphragm chamber drain	1
	52927	Body Assy - Carburetor	1
38	53813	. Shutter - Choke	1
39	52931	. Shaft Assy - Choke	1
40	52929	. Pin - Friction	1
41	52930	. Spring - Choke shaft friction	1
42	*51583	. Plug - Welch	1
43	*52928	. Plug - Cup	1
44	*52953	. Screen - Inlet connection	1
45		. Body - Carburetor	1
46	55519A	Gasket - Carburetor	1
	*52949	Gasket and Packing Set	1
	52950	Repair Parts Kit	1

*Indicates parts of Repair Parts Kit.

TOOLS, PARTS AND ACCESSORIES

*51445A	Combination Wrench-Screwdriver
*52863	Owner's Manual
56625B	Chain Maintenance Manual
52958	Spike
50134	Piston Assy - 0.020-in. oversize
55125	. Ring Set - 0.020-in. oversize

*Items furnished with each saw.

