

ILLUSTRATED PARTS LIST

MODELS	SERIAL NUMBER PREFIX	MODELS	SERIAL NUMBER PREFIX
600022b	11-	600022J	11-
600022E	11-, 12-	600022K	11-
600022F	11-	600022P	11-
600022G	11-	600022S	11-
600022H	11-	600022U	11-
		600104D	12-

MAC 140 Chain Saw



October 1982

McCulloch chain saws are identified by a model number (in this instance, 600022) followed by a suffix letter (A, B, C, etc.) stamped on the identification plate attached to the saw. Suffix letters denote variations in parts or assemblies in the manufacture of the saw.

Part numbers listed in this I.P.L. which have a suffix letter or letters following the description, indicate the part is used only on the model(s) identified by the letter or letters.

Part numbers and descriptions without suffix letter or letters apply to all versions of the chain saw model.

Part numbers which have one or more dots (.) preceding their descriptions may be ordered individually, but they are also included in the kit or assembly whose description begins directly above the dot(s).

Part numbers in this IPL which were not in the previous IPL covering these saws, are indicated by a dash (-) preceding the new part number.

The policy of McCulloch is one of continual improvement in design, manufacturing and engineering advancement wherever possible to assure still finer two-cycle power tools. Hence, specifications, equipment, colors, design and manufacturer's suggested list prices are subject to change without notice and McCulloch reserves the right to make such changes without prior notification or obligation to backfit or supply backfit components for units previously shipped from the factory.

- CONTENTS -

	Page
Figure 1. General	2
Figure 2. CHAIN BRAKE Assembly	4
Figure 3. Carburetor Assembly	5
Figure 4. Carburetor Assembly	6
Figure 5. Powerhead Assembly	7
Accessories	3
Service Specifications	9



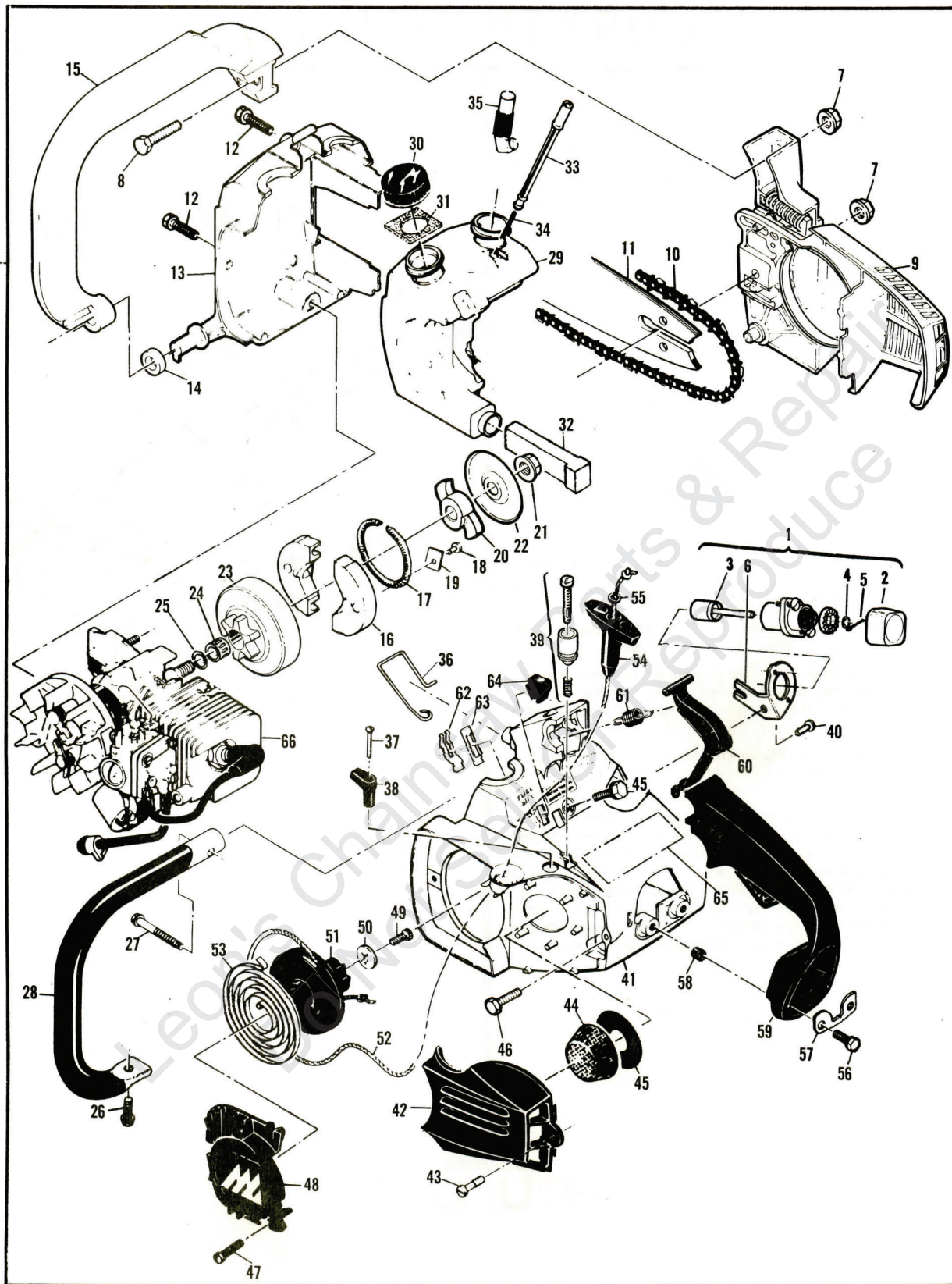


Figure 1. General

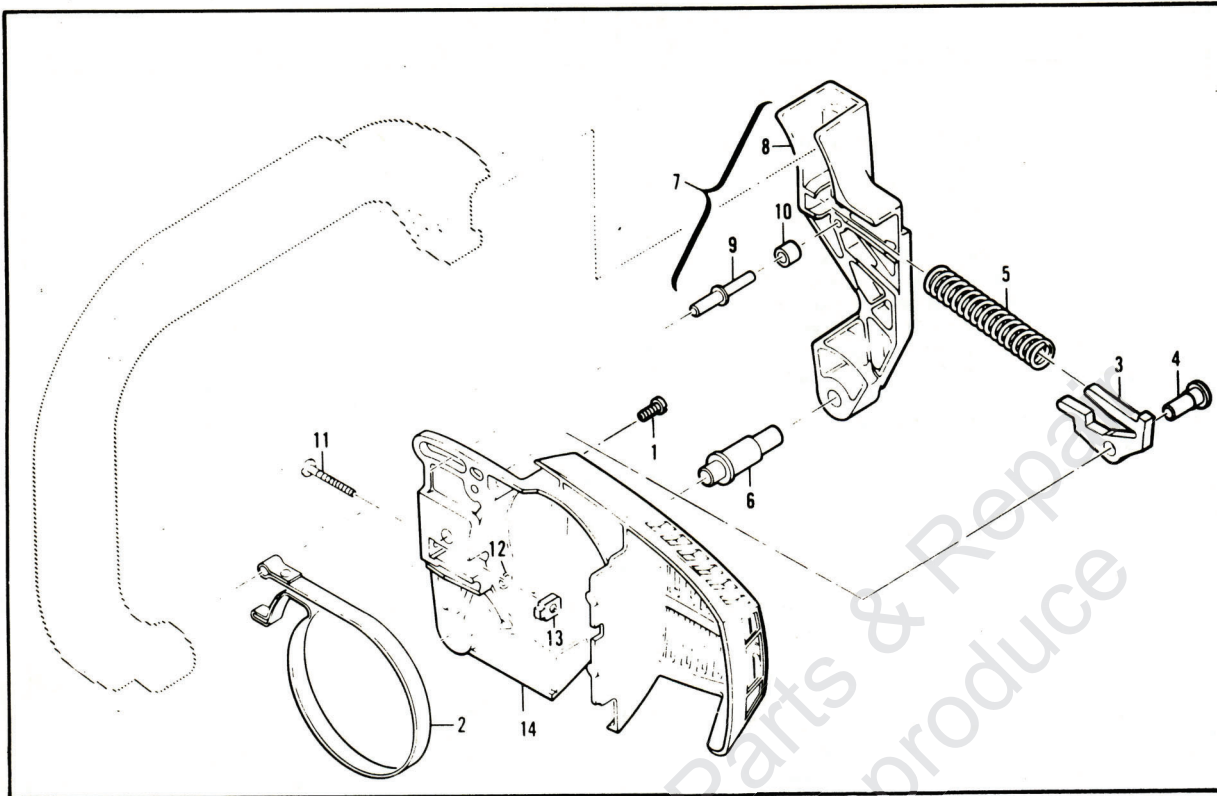
Figure 1. General

ITEM NO.	PART NUMBER	DESCRIPTION	UNITS PER ASY.	ITEM NO.	PART NUMBER	DESCRIPTION	UNITS PER ASY.
1	215664	Grinder Asy-AUTO-SHARP	1	35	85557	. Body-Oiler	1
2	215447	. Knob	1	36	84611	Rod-Manual oiler	1
3	216707	. Wheel Assembly-Grinding	1	37	110672	Screw-Oval hd 4-40 x 1	1
4	216134	. Washer	1	38	83870	Knob-Choke	1
5	216133	. Pin-Cotter	1	39	- -	Throttle Latch Asy (Fig. 3)	1
6	215209	. Bracket-AUTO-SHARP	1	40	110583	Screw-Pan hd 8-32 x 1/2 (SEMS)	2
7	110676	Nut-Hx 1/4-28	2	41	214271	Shroud	1
8	110972	Screw-Hx 1/4-28 x 3/4	1	42	91853	Cover-Air cleaner	1
9	- -	CHAIN BRAKE Assembly (Fig. 2)	1	43	91796	. Screw-Air cleaner	1
10	- -	Chain Assembly (Accessories)	1	44	91460	Filter-Air	1
11	- -	Bar Assembly (Accessories)	1	45	84918	Washer-Air seal	1
12	110639	Screw-Hx hd 12-24 x 1	2	46	110953	Screw-Hx hd 12-24 x 5/8	3
13	214718	Cover-Fuel & Oil tank	1	47	110959	Screw-Hx hd 8-32 x 1/2	3
14	93194A	Washer-Rubber	1	48	90425	Cover-Starter	1
15	92479	Lever-Handguard	1	49	110041	Screw-Pan hd 8-32 x 1/2	1
16	213278	Kit-Clutch	1	50	68497	Washer-Special	1
17	93608	. Spring Assembly	1	51	213261	Drum/Rope Assembly	1
18	110957	. Rivet	2	52	83203	. Rope-Starter	1
19	85064	. Plate	2	53	83078	Spring-Rewind	1
20	94247	. Kit-Rotor	1	54	91255	Kit-Starter handle	1
21	94244	. . Nut-Clutch	1	55	105490	. Washer-Starter handle	1
22	94243	. . Plate-Dust	1	56	110953	Screw-Hx hd 12-24 x 5/8	2
23	214390	Drum/Sprocket/Bearing Asy	1	57	84520A	Plate-Washer	1
24	91222	. Kit-Needle bearing	1	58	84519	Sleeve-Handle	2
25	215259	Washer	1	59	93810	Kit-Handle	1
26	110953	Screw-Hx hd 12-24 x 5/8	1	60	93869	. Trigger	1
27	110686	Screw-Hx hd 13-16 x 2	1	61	83940	Spring-Trigger	1
28	214505	Frame & Grip Assembly	1	62	83935	Contact-Switch	1
29	91454A	Kit-Fuel & Oil Tank	1	63	83936	Protector-Switch	1
30	91283	. Cap-Fuel & Oil (unvented)	2	64	83934	Button-Switch	1
31	91148	. Seal-Fuel vent	1	65	95769	Plate-Name	1
32	84956	. Pickup-Fuel	1	65	93730	Plate-Name, French (E)	1
33	213906	. Piston-Manual oiler	1	66	- -	Powerhead Assembly (Fig. 4)	1
34	83946	. Spring-Piston	1				

Tools & Accessories

PART NUMBER	DESCRIPTION	PART NUMBER	DESCRIPTION
93090	Guide - Timing	93282	Case - Carrying (14" Guard)
214215	Guide - File	92977	. Guard - Bar, 14"
90256	Kit - Tune-up	67537	Loctite
68915A	Kit - Piston tool (11-)	69794	Locquic
91485	Wrench - Socket	110083	R.T.V. Sealant.
85687	Wrench - Screwdriver	85702	Lubricant - Custom 6 oz. can
214211	Kit - Tool Maintenance	85703	Lubricant - Custom 6 oz. cans, 6 pack
93900	Kit - Pressure Test	214656N	Chain - AS 370G (B,E,F,G,H,K, P,S,U)
215432	Tool - Pressure Test	214235	Bar - 14" Mini Pro (B,E,F,G,H, K,P,S,U)
501334	Tester - Ignition	-214916N	Chain - AS 370G (J)
214194	Lubri-Gun	214234	Bar - 12" Mini Pro (J)
88755	Scrench		
214204	Kit - Spark arrester screen		

Figure 2. CHAIN BRAKE Assembly.

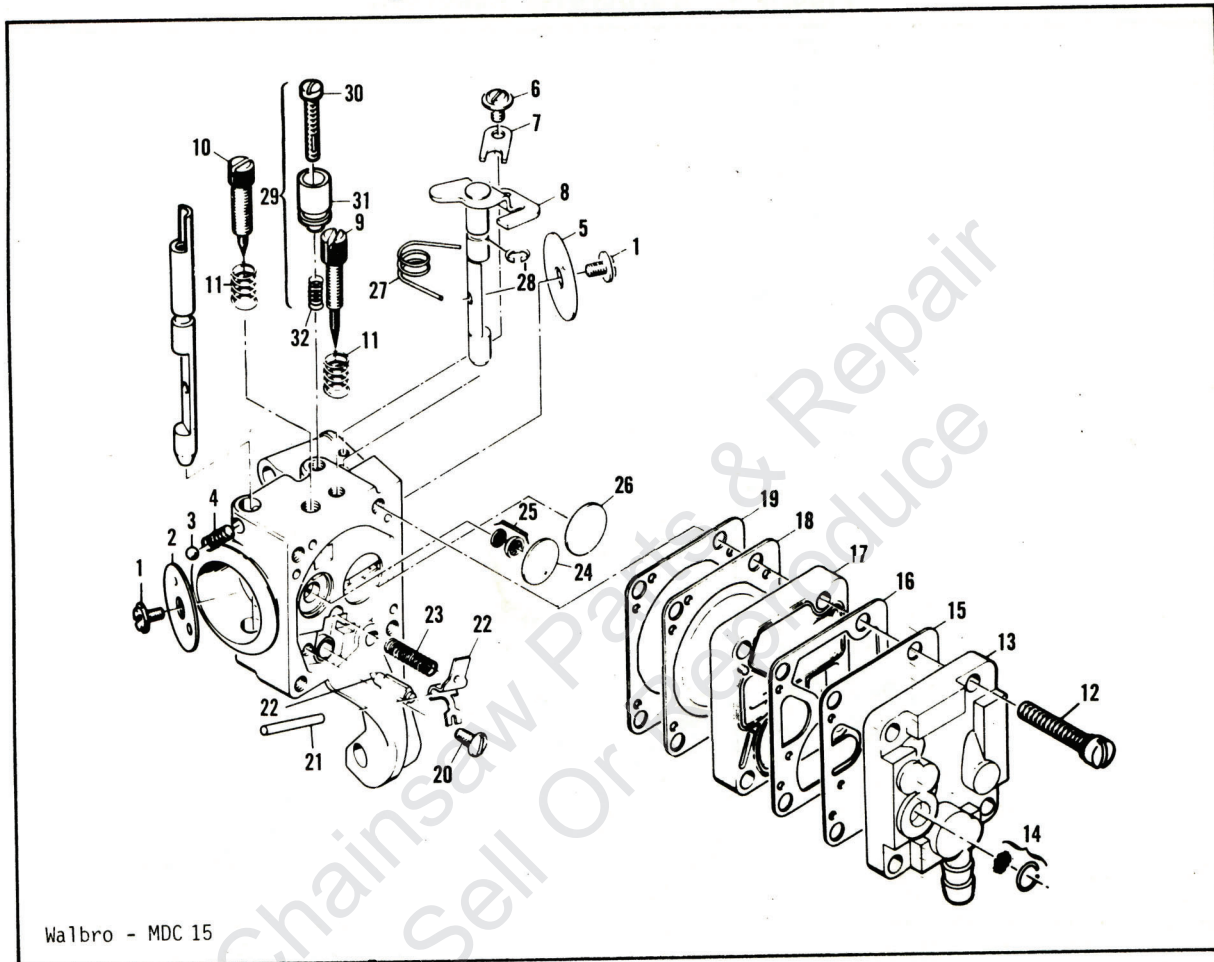


ITEM NO.	PART NUMBER	DESCRIPTION	UNITS PER ASY.
	214376	CHAIN BRAKE Assembly	1
1	111047	① . Screw-Pan hd 8-32 x 5/8	1
2	94709	② . Band-Brake	1
3	94006	② . Latch	1
3	-215758	③ . Latch	1
4	93602	. Pivot-Latch	1
5	94007	② . Spring-Compression	1
5	93140	③ . Spring-Compression	1
6	92482	. Pivot-Lever	1

ITEM NO.	PART NUMBER	DESCRIPTION	UNITS PER ASY.
7	214375	. Lever Assembly-Actuating	1
8	92867	. . . Lever	1
9	213907	. . . Pin-Roller	1
10	214368	. . . Bearing-Roller	1
11	90658	. . . Screw-Adjusting	1
12	110907	. . . Ring-Retaining	1
13	84929	. . . Nut-Bar adjusting	1
14	94175	② . Housing-Brake	1
14	-94180	③ . Housing-Brake	1

- ① Not used on some early models.
- ② Used on models with Screw, P/N 111047.
- ③ Used on models without Screw, P/N 111047.

Figure 3. Carburetor Assembly.



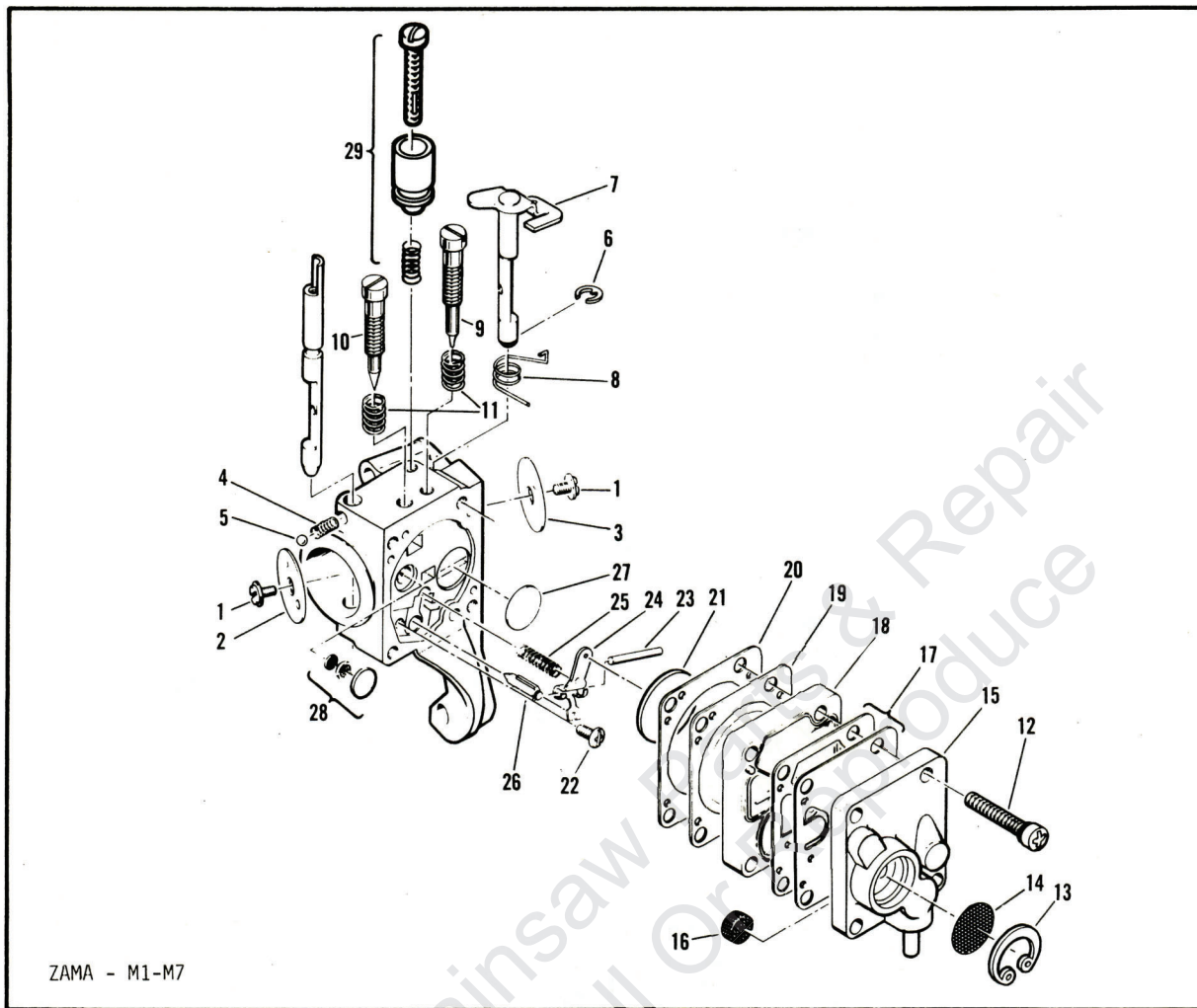
Walbro - MDC 15

ITEM NO.	PART NUMBER	DESCRIPTION	UNITS PER ASY.
	214082	① Carburetor Asy - Walbro MDC 15	1
1	-	. Screw - Plate	2
2	-	. Plate - Choke	1
3	-	. Ball - Choke friction	1
4	-	. Spring - Choke friction	1
5	-	. Plate - Throttle	1
6	-	. Screw - Clip	1
7	-	. Clip - Throttle shaft	1
8	-	. Shaft Asy - Throttle	1
9	86446	④ . Needle - Idle	1
10	86447	④ . Needle - High speed	1
11	67502	④ . Spring - Needle	2
12	68564	. Screw Asy - Body	4
13	91347	. Cover Asy - Pump	1
14	85629	② . Kit - Vent screen	1
15	68563	③② . Diaphragm - Fuel pump	1
16	85035	③② . Gasket - Pump diaphragm	1

ITEM NO.	PART NUMBER	DESCRIPTION	UNITS PER ASY.
17	-	. Body - Fuel pump	1
18	85036	③② . Diaphragm - Metering	1
19	85034	③② . Gasket - Diaphragm	1
20	67500	② . Screw - Lever pin	1
21	67508	② . Pin - Lever	1
22	85059	② . Kit - Needle & Lever	1
23	68567	② . Spring - Lever	1
24	68559	② . Plug - Welsh 7/16	1
25	83758	② . Kit - Check valve	1
26	68560	② . Plug - Welsh 1/2	1
27	-	. Spring - Throttle return	1
28	-	. Ring - Retaining	1
29	93437	. Latch Asy - Throttle	1
30	-	. Screw - Long lock	1
31	-	. Latch - Throttle	1
32	-	. Spring - Compression	1
	86463	. Repair Kit	1

- ① One of two carburetors used. Identify parts before ordering.
- ② Contained in Repair Kit, P/N 216731
- ③ Contained in Repair Kit, P/N 216727
- ④ Contained in Repair Kit, P/N 216725

Figure 4. Carburetor Assembly.



ZAMA - M1-M7

ITEM NO.	PART NUMBER	DESCRIPTION	UNITS PER ASY.
	214082A ①	Carburetor Asy - Zama M1-M7	1
1	- -	Screw - Plate	2
2	- -	Valve - Choke	1
3	- -	Valve - Throttle	1
4	- -	Spring - Choke	1
5	- -	Ball - Friction	1
6	- -	"E" Ring	1
7	- -	Shaft Assembly - Throttle	1
8	- -	Spring - Throttle return	1
9	215275 ④	Screw - Idle adjustment	1
10	215276 ④	Screw - Main adjustment	1
11	91819 ④	Spring - Screw	2
12	- -	Screw - Cover	4
13	215283 ②	"C".Ring	1
14	215284 ②	Strainer	1

ITEM NO.	PART NUMBER	DESCRIPTION	UNITS PER ASY.
15	- -	Cover - Pump	1
16	91820 ②	Screen	1
17	- - ③②	Kit - Pump diaphragm	1
18	215281	Body - Pump	1
19	215282 ③②	Diaphragm - Main	1
20	215280 ③②	Gasket - Main	1
21	215277 ②	Disk	1
22	91814 ②	Screw	1
23	91813 ②	Pin - Arm	1
24	215278 ②	Arm - Needle valve	1
25	91811 ②	Spring - Arm	1
26	91810 ②	Valve - Needle	1
27	93951 ②	Plug - Welsh	1
28	215287 ②	Valve Asy - Main nozzle	1
29	93437	Latch Assembly - Throttle	1

- ① One of two carburetors used. Identify parts before ordering.
- ② Contained in Repair Kit, P/N 216721
- ③ Contained in Repair Kit, P/N 216722
- ④ Contained in Repair Kit, P/N 216734

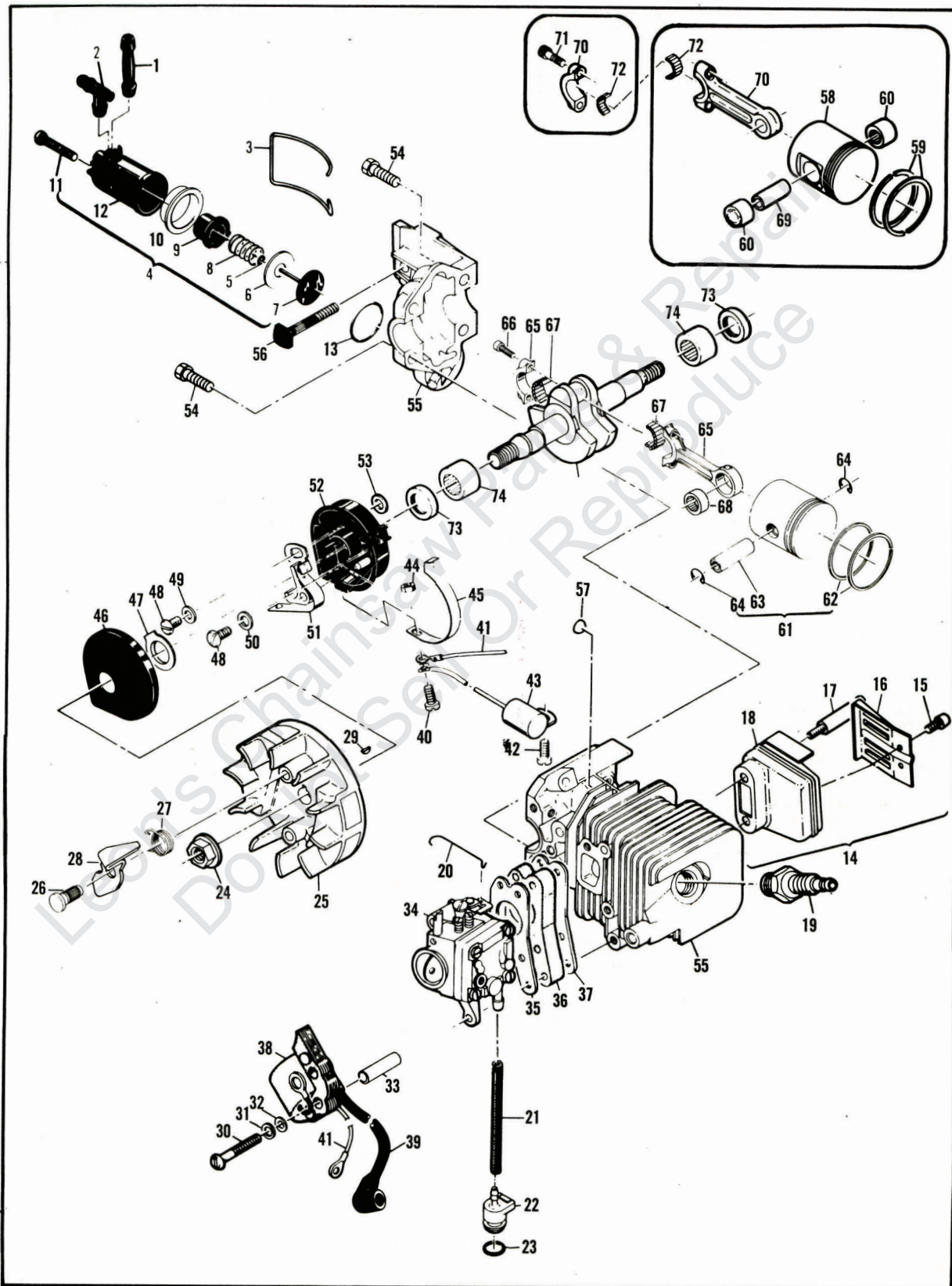


Figure 5. Powerhead Assembly.

Figure 5. Powerhead Assembly

ITEM NO.	PART NUMBER	DESCRIPTION	UNITS PER ASY.	ITEM NO.	PART NUMBER	DESCRIPTION	UNITS PER ASY.
1	83898	Connector-Outlet	1	35	68197	Gasket-Carburetor	1
2	84613	Connector-Pump	1	36	-214349	Insulator-Carburetor	1
3	83896	Bail-Mounting	1	37	90714	Gasket-Insulator	1
4	-215739	Pump Assembly	1	38	84957	Coil & Lamination Assembly	1
5	-	⑤ . "0" Ring	1	39	50120	. Wire Assembly-Spark plug	1
6	-	⑤ . Ring-Pump piston	1	40	110617	Screw-Pan hd 6-32 x 5/8	1
7	-	⑤ . Piston Assembly-Pump	1	41	69344	Wire Assembly-Coil	1
8	83891	. Spring-Pump	1	42	110041	Screw-Pan hd 8-32 x 1/2 s/t	1
9	-	⑤ . Sleeve-Pump	1	43	85358	Condenser	1
10	-	⑤ Eyelet	1	44	100035	Nut-Hx 6-32	1
11	-110651	. Screw-Adjustment	1	45	84502	Connector-Stop switch	1
12	-	. Body Assembly-Pump	1	46	67841	Cover-Breaker box	1
13	110653	"0" Ring	1	47	69323	Seal-Breaker box	1
14	-215411	① Kit-Muffler	1	48	110969	Screw-Hx hd 8-32 x 1/2	2
15	110681	① . Screw-Dkt hd 10-24 x 1/4	2	49	69322	Washer-Special	1
16	92961	① . Deflector-Exhaust	1	50	105976	Washer-#8	1
17	213327	① . Screw-Special	2	51	88811	Breaker Assembly	1
18	-215397	① . Body-Cover	1	52	84505A	Kit-Breaker box	1
14	-215412	② Kit-Muffler	1	53	92037	. Washer	1
15	110681	② . Screw-Skt hd 10-24 x 1/4	2	54	110639	Screw-Hx hd 12-24 x 1	4
16	92961	② . Deflector-Exhaust	1	55	214157	Kit-Cyl/C'case Assembly	1
17	93036	② . Screw-Special	2	56	83856	. Bolt-Bar mounting	1
18	93655	② . Body-Cover	1	57	110914	. Plug-Cup	4
19	-214223	Spark Plug (F,G,J,K,P,S,U)	1	55	-214164	① Cyl/C'case Assembly	1
19	93018	Spark Plug (B,E,H)	1	56	83856	① . Bolt-Bar mounting	1
20	89274	Rod-Throttle	1	57	110914	① . Plug-Cup	4
21	-89059	Hose-Fuel	1	58	68098	② Piston Assembly	1
22	90660	Adaptor-Fuel hose	1	59	87165	② . Set-Piston rings	1
23	110908	"0" Ring	1	60	110538	② . Bearing-Needle	2
24	-110961	Nut-Hx 5/16-24	1	61	94662	② Piston Assembly	1
25	94513	③ Flywheel-Pawl Assembly	1	62	95143	② . Set-Piston rings	1
26	68796	③ . Pin-Pawl	2	63	92836	② . Pin-Piston	1
27	67814	③ . Spring-Pawl	2	64	111026	① . Ring-Snap	2
28	94493	③ . Pawl-Starter	2	65	94135	① Connecting Rod Assembly	1
25	-94737	④ Flywheel/Pawl Assembly	1	66	94654	① . Screw-Connecting rod	2
26	68796	④ . Pin-Pawl	2	67	68095	① . Roller-Needle (Set of 20)	1
27	67814	④ . Spring-Pawl	2	68	110984	① . Bearing-Needle	1
28	-213261	④ . Pawl-Starter	2	69	66867	① Pin-Piston	1
29	102164	Key-Woodruff	1	70	68097	① Connecting Rod Assembly	1
30	110586	Screw-Pan hd 8-32 x 1-3/4	3	71	-94654	① . Screw-Special	2
31	105976	Washer-#8	3	72	68095	② . Roller-Needle (Set of 20)	1
32	67177	Washer-Insulating	3	73	83859	② Seal-Oil	2
33	68198	Tube-Insulating	3	74	213282	② Bearing-Crankshaft	2
34	-	Carburetor Assembly (Fig. 3,4)		75	91932	② Crankshaft	1

* Flywheel nut torque should be 190 to 200 pound x inches (21.5 to 22.6 N.m.)

- ① Used on models with serial number prefix 12-.
- ② Used on models with serial number prefix 11-.
- ③ Used on models with white Drum/Rope Assembly, P/N 94492 (Fig. 1).
- ④ Used on models with black Drum/Rope Assembly, P/N 92316 (Fig. 1).
- ⑤ Contained in Oil Pump Repair Kit, P/N 216426.