

ILLUSTRATED PARTS LIST

| MAC 110 MODELS | SERIAL NUMBER PREFIX | MAC 120 MODELS | SERIAL NUMBER PREFIX |
|----------------|----------------------|----------------|----------------------|
| 600016A | 11-, 12-, 13- 14- | 600016B | 11-, 12-, 13- 14- |
| 600016C | 11-, 12-, 13- 14- | 600016F | 11-, 12-, 13- 14- |
| 600016D | 11- | 600016J | 11- |
| 600016E | 11-, 12-, 13- 14- | 600016K | 11- |
| 600016G | 11- | 600016O | 13-, 14- |
| 600016H | 11-, 12-, 13- 14- | 600016P | 11-, 12-, 13- 14- |
| 600016M | 11-, 12-, 13- 14- | 600016Q | 13-, 14- |
| 600016N | 11-, 12-, 13- 14- | 600016S | 11-, 12-, 13- 14- |
| 600016R | 11- | 600016T | 11- |
| | | 600016U | 11-, 12-, 13- 14- |

MAC 110 MAC 120 Chain Saw



McCulloch chain saws are identified by a model number (in this instance, 600016) followed by a suffix letter (A, B, C, etc.) stamped on the identification plate attached to the saw. Suffix letters denote variations in parts or assemblies in the manufacture of the saw.

Part numbers listed in this I.P.L. which have a suffix letter or letters following the description, indicate the part is used only on the model(s) identified by the letter or letters.

Part numbers and descriptions without suffix letter or letters apply to all versions of the chain saw model.

Part numbers which have one or more dots (.) preceding their descriptions may be ordered individually, but they are also included in the kit or assembly whose description begins directly above the dot(s).

Part numbers in this I.P.L. which were not in the previous I.P.L. covering these saws, are indicated by a dash (-) preceding the new part number.

The policy of McCulloch is one of continual improvement in design, manufacturing and engineering advancement wherever possible to assure still finer two-cycle power tools. Hence, specifications, equipment, colors, design and manufacturer's suggested list prices are subject to change without notice and McCulloch reserves the right to make such changes without prior notification or obligation to backfit or supply backfit components for units previously shipped from the factory.

- CONTENTS -

| | Page |
|-----------------------------------------|------|
| Figure 1. General | 2 |
| Figure 2. Carburetor Assembly | 4 |
| Figure 3. Carburetor Assembly | 5 |
| Figure 4. Powerhead Assembly | 6 |
| Figure 5. CHAIN BRAKE | 8 |
| Bar & Chain Combinations | 3 |
| Tools & Accessories | 8 |
| Service Specifications | 3 |

January 1983



MAC 110 MAC 120

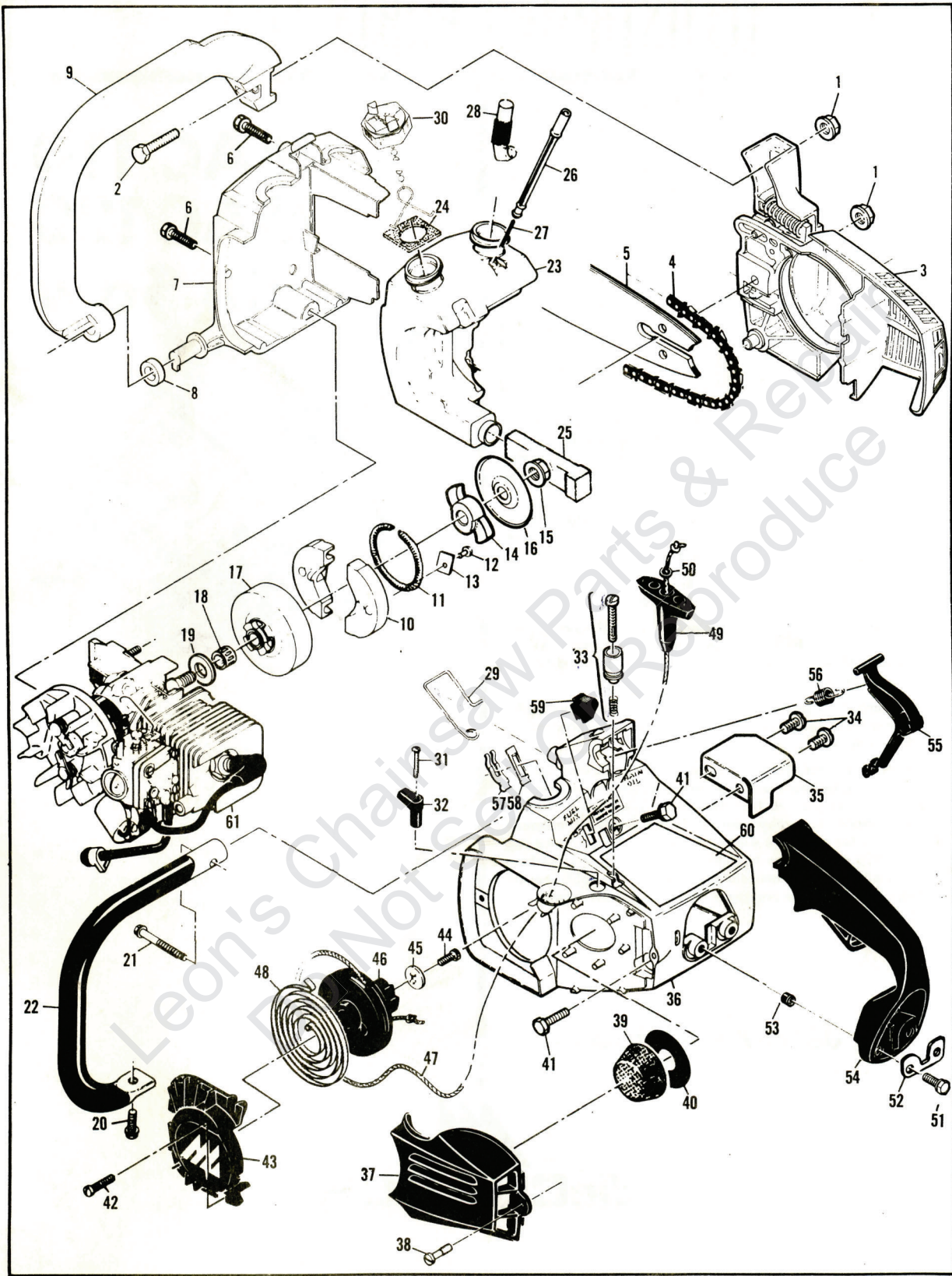


Figure 1. General

MAC 110
MAC 120

Figure 1. General

| ITEM NO. | PART NUMBER | DESCRIPTION | UNITS PER ASY. |
|----------|-------------|---------------------------|----------------|
| 1 | -216256 | Nut-Hx 1/4-28 | 2 |
| 2 | -216276 | Screw-Hx 1/4-28 x 3/4 | 1 |
| 3 | - | CHAIN BRAKE Assy (Fig. 5) | |
| 4 | - | Chain Assy (See below) | |
| 5 | - | Bar (See below) | |
| 6 | 110639 | Screw-Hx hd 12-24 x 1 | 2 |
| 7 | -214718 | Cover-Fuel & Oil tank | 1 |
| 8 | 93194A | Washer-Rubber | 1 |
| 9 | 92479 | Lever-Handguard | 1 |
| 10 | 213278 | Kit-Clutch | 1 |
| 11 | 93608 | . . Spring Assembly | 1 |
| 12 | 110957 | . . Rivet | 2 |
| 13 | 85064 | . . Plate | 2 |
| 14 | 94247 | . Kit-Rotor | 1 |
| 15 | 94244 | . . Nut-Clutch | 1 |
| 16 | 94243 | . . Plate-Dust | 1 |
| 17 | -214390 | Drum/Spkt/Brng Assembly | 1 |
| 18 | 91222 | . Kit-Needle bearing | 1 |
| 19 | -215259 | . Washer-Sprocket | 1 |
| 20 | 110953 | Screw-Hx hd 12-24 x 5/8 | 1 |
| 21 | 110686 | Screw-Hx hd 13-16 x 2 | 1 |
| 22 | 214505 | Frame & Grip Assembly | 1 |
| 23 | -216715 | Fuel & Oil Tank Assy | 1 |
| 24 | 91148 | . Seal-Fuel Vent | 1 |
| 25 | 84956 | . Pickup-Fuel | 1 |
| 26 | -213906 | . Piston-Manual Oiler | 1 |
| 27 | 83946 | . Spring-Piston | 1 |
| 28 | 85557 | . Body-Oiler | 1 |
| 29 | 84611 | Rod-Manual Oiler | 1 |
| 30 | -216668 | Cap-Fuel & Oil (unvented) | 2 |
| 31 | 110672 | Screw-Oval hd 4-40 x 1 | 1 |

| ITEM NO. | PART NUMBER | DESCRIPTION | UNITS PER ASY. |
|----------|-------------|--------------------------------|----------------|
| 32 | 83870 | Knob-Choke | 1 |
| 33 | - | Throttle Latch Assy (Fig. 3,4) | 1 |
| 34 | 110807 | Screw-Pan hd 8-32 x 5/16 | 2 |
| 35 | 93290 | Deflector-Sawdust | 1 |
| 36 | -214987 | Shroud | 1 |
| 37 | 91853 | Cover-Air cleaner | 1 |
| 38 | 91796 | . Screw-Air cleaner | 1 |
| 39 | 91460 | Filter-Air | 1 |
| 40 | 84918 | Washer-Air seal | 1 |
| 41 | 110953 | Screw-Hx hd 12-24 x 5/8 | 3 |
| 42 | 110959 | Screw-Hx hd 8-32 x 1/2 | 1 |
| 43 | 90425 | Cover-Starter | 1 |
| 44 | 110041 | Screw-Pan hd 8-32 x 1/2 | 1 |
| 45 | 68497 | Washer-Special | 1 |
| 46 | 213261 | Drum/Rope Assembly | 1 |
| 47 | 83203 | . Rope-Starter | 1 |
| 48 | 83078 | Spring-Rewind | 1 |
| 49 | 91255 | Kit-Starter handle | 1 |
| 50 | 105490 | . Washer-Starter handle | 1 |
| 51 | 110953 | Screw-Hx hd 12-24 x 5/8 | 2 |
| 52 | 84520A | Plate-Washer | 1 |
| 53 | 84519 | Sleeve-Handle | 2 |
| 54 | -94896 | Kit-Handle | 1 |
| 55 | 93869 | Trigger-Throttle | 1 |
| 56 | 83940 | Spring-Trigger | 1 |
| 57 | 83935 | Contact-Switch | 1 |
| 58 | 83936 | Protector-Switch | 1 |
| 59 | 83934 | Button-Switch | 1 |
| 60 | 95202 | Plate-Name (MAC 120) | 1 |
| 60 | 95203 | Plate-Name (MAC 110) | 1 |
| 61 | - | Powerhead Assembly (Fig. 4) | 1 |

Bar & Chain Combinations

| PART NO. | DESCRIPTION |
|----------|-------------------------------------|
| -214233 | Bar-10" Mini Pro (A, M) |
| -215250 | Bar-10" Mini Mac (C, G, R) |
| -214918N | Chain Assy-10" MM 370G (A, C, G, R) |
| -214227N | Chain Assy-10" MP 370G (M) |
| -214234 | Bar-12" Mini Pro (B,D,F,N,P,S,T,U) |

| PART NO. | DESCRIPTION |
|----------|-----------------------------------------|
| -214921N | Chain Assy-12" MP 370G (B, D, F, N, P,) |
| -214916N | Chain Assy-12" MM 370G (K, S, T, U) |
| -214235 | Bar-14" Mini Pro (J) |
| -214913N | Chain Assy-14" MM 370G (J) |

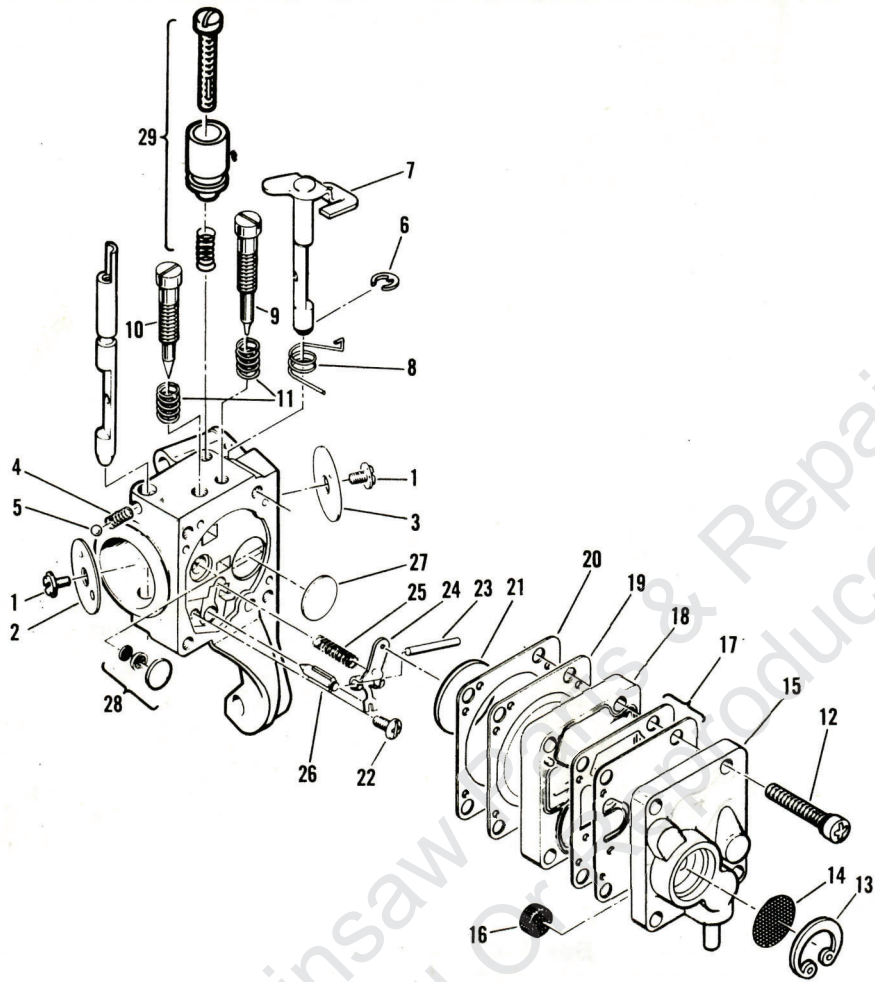
Service Specifications

| | |
|---------------------------|-------------------------------------------------|
| Displacement (11-) | 1.8 cu. in. |
| Displacement (12,13-,14-) | 2.0 cu. in. |
| Bore and Stroke (11-) | 1.375 x 1.201 in. (34.9 x 30.5 mm) |
| Bore and Stroke (12-,13) | 1.430 x 1.201 in. (36.5 x 30.5 mm) |
| Bearings | Main: Needle Conn. Rod: Needle |
| Intake System | 3rd Port, Piston Timed |
| Fuel Tank Capacity | 10.8 fl. oz. (320 cc) |
| Chain Oiler Capacity | 3.2 fl. oz. (95 cc) |
| Clutch Engaging Speed | 3800 to 4200 rpm |
| Idle Speed | 2700 to 2900 rpm |
| Ignition | Magneto |

| | |
|-------------------------|----------------------------------------------|
| Carburetor | Diaphragm Type, 2 needle |
| Fuel Type | Regular grade, leaded |
| Fuel/Oil Mixture | 40:1 w/McCulloch Oil |
| Filter System-Fuel | Felt Fuel Filter |
| Filter System-Air | Flocked Screen Filter |
| Lamination Gap |008 to .012" (.203 to .304 mm) |
| Breaker Point Gap |018" (.457 mm) |
| Timing | 26° B.T.D.C. |
| Piston Rings | 2 Cast Iron Compression |
| Weight (w/bar & chain): | |
| MAC 110 | 9.6 lbs. (4.3 kg) |
| MAC 120 | 9.7 lbs. (4.4 kg) |

MAC 110 MAC 120

Figure 2. Carburetor Assembly.



ZAMA - M1-M7

| ITEM NO. | PART NUMBER | DESCRIPTION | UNITS PER ASY. |
|----------|-------------|-----------------------------|----------------|
| | 214082A | ① Carburetor Asy-Zama M1-M7 | 1 |
| 1 | - | Screw-Plate | 2 |
| 2 | - | Valve-Choke | 1 |
| 3 | - | Valve-Throttle | 1 |
| 4 | - | Spring-Choke | 1 |
| 5 | - | Ball-Friction | 1 |
| 6 | - | "E" Ring | 1 |
| 7 | - | Shaft Assembly-Throttle | 1 |
| 8 | - | Spring-Throttle return | 1 |
| 9 | 215275 | ④ Screw-Idle adjustment | 1 |
| 10 | 215276 | ④ Screw-Main adjustment | 1 |
| 11 | 91819 | ④ Spring-Screw | 2 |
| 12 | - | Screw-Cover | 4 |
| 13 | - | "C" Ring | 1 |
| 14 | 215284 | ② Strainer | 1 |

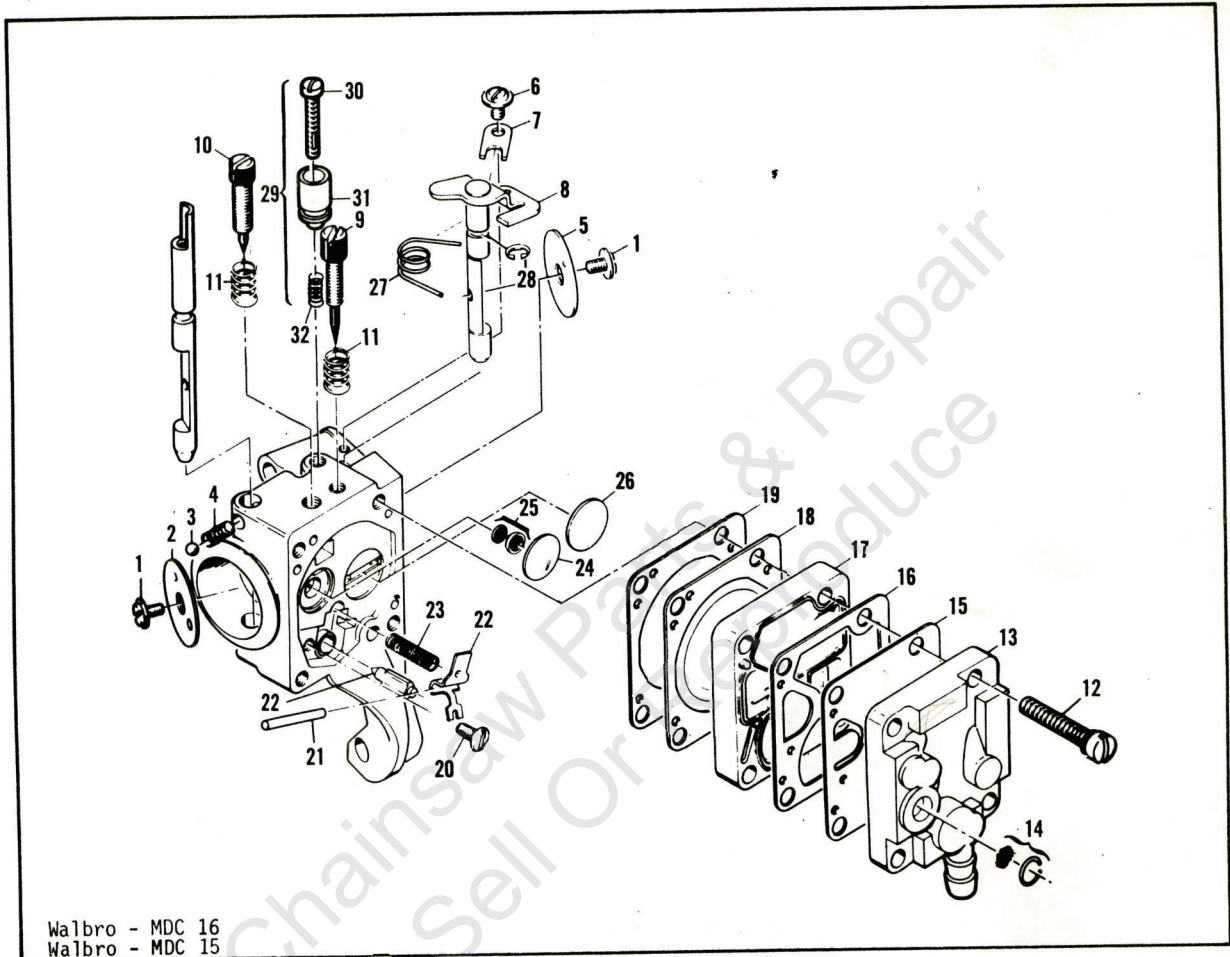
| ITEM NO. | PART NUMBER | DESCRIPTION | UNITS PER ASY. |
|----------|-------------|-------------------------|----------------|
| 15 | - | Cover-Pump | 1 |
| 16 | 91820 | ② Screen | 1 |
| 17 | - | ③② Kit-Pump diaphragm | 1 |
| 18 | 215281 | Body-Pump | 1 |
| 19 | 215282 | ③② Diaphragm-Main | 1 |
| 20 | 215280 | ③② Gasket-Main | 1 |
| 21 | 215277 | ② Disk | 1 |
| 22 | 91814 | ② Screw | 1 |
| 23 | 91813 | ② Pin-Arm | 1 |
| 24 | 215278 | ② Arm-Needle valve | 1 |
| 25 | 91811 | ② Spring-Arm | 1 |
| 26 | 91810 | ② Valve-Needle | 1 |
| 27 | 93951 | ② Plug-Welsh | 1 |
| 28 | 215287 | ② Valve Asy-Main nozzle | 1 |
| 29 | 93437 | Latch Assembly-Throttle | 1 |

- ① One of three carburetors used. Identify parts before ordering.
- ② Included in Repair Kit, P/N 216721.
- ③ Included in Gasket/Diaphragm Kit, P/N 216722.
- ④ Included in Needle Kit, P/N 216734.

NOTE: Items not listed with part numbers are shown for identification and disassembly sequence purposes only. They are NOT available as service parts.

MAC 110 MAC 120

Figure 3. Carburetor Assembly.



Walbro - MDC 16
Walbro - MDC 15

| ITEM NO. | PART NUMBER | DESCRIPTION | UNITS PER ASY. |
|----------|-------------|------------------------------|----------------|
| | -214082B | Carburetor Asy-Walbro MDC 16 | 1 |
| | 214082 | Carburetor Asy-Walbro MDC 15 | 1 |
| 1 | - | Screw-Plate | 2 |
| 2 | - | Plate-Choke | 1 |
| 3 | - | Ball-Choke friction | 1 |
| 4 | - | Spring-Choke friction | 1 |
| 5 | - | Plate-Throttle | 1 |
| 6 | - | Screw-Clip | 1 |
| 7 | - | Clip-Throttle shaft | 1 |
| 8 | - | Shaft Asy-Throttle | 1 |
| 9 | 86446 | ④ Needle-Idle | 1 |
| 10 | 86447 | ④ Needle-High speed | 1 |
| 11 | 67502 | ④ Spring-Needle | 2 |
| 12 | - | Screw Asy-Body | 4 |
| 13 | - | Cover Asy-Pump | 1 |
| 14 | 85629 | ② Kit-Vent screen | 1 |
| 15 | 68563 | ①② Diaphragm-Fuel pump | 1 |
| 16 | 85035 | ①② Gasket-Pump diaphragm | 1 |

| ITEM NO. | PART NUMBER | DESCRIPTION | UNITS PER ASY. |
|----------|-------------|------------------------|----------------|
| 17 | - | Body-Fuel pump | 1 |
| 18 | 85036 | ③② Diaphragm-Metering | 1 |
| 19 | 85034 | ③② Gasket-Diaphragm | 1 |
| 20 | 67500 | ② Screw-Lever pin | 1 |
| 21 | 67508 | ② Pin-Lever | 1 |
| 22 | 85059 | ② Kit-Needle & Lever | 1 |
| 23 | 68567 | ② Spring-Lever | 1 |
| 24 | 68559 | ② Plug-Welsh 7/16 | 1 |
| 25 | 83758 | ② Kit-Check valve | 1 |
| 26 | 68560 | ② Plug-Welsh 1/2 | 1 |
| 27 | - | Spring-Throttle return | 1 |
| 28 | - | Ring-Retaining | 1 |
| 29 | 93437 | Latch Asy-Throttle | 1 |
| 30 | - | Screw-Long lock | 1 |
| 31 | - | Latch-Throttle | 1 |
| 32 | - | Spring-Compression | 1 |

- ① One of three carburetors used. Identify parts before ordering.
- ② Included in Repair Kit, P/N 216731
- ③ Included in Gasket/Diaphragm Kit, P/N 216727
- ④ Included in Needle Kit, P/N 216725

NOTE: Items not listed with part numbers are shown for identification and disassembly sequence purposes only. They are NOT available as service parts.

MAC 110 MAC 120

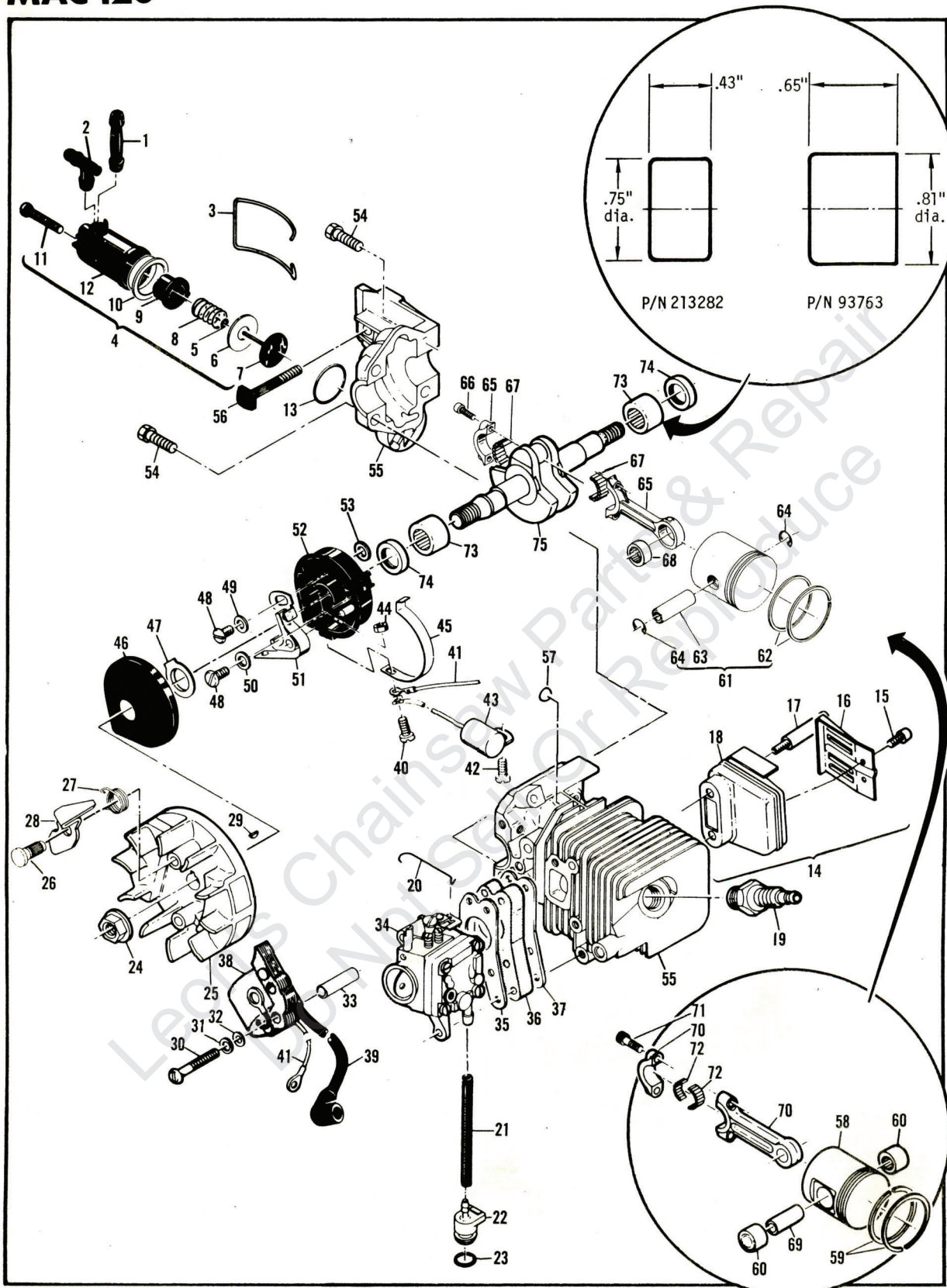


Figure 4. Powerhead Assembly.

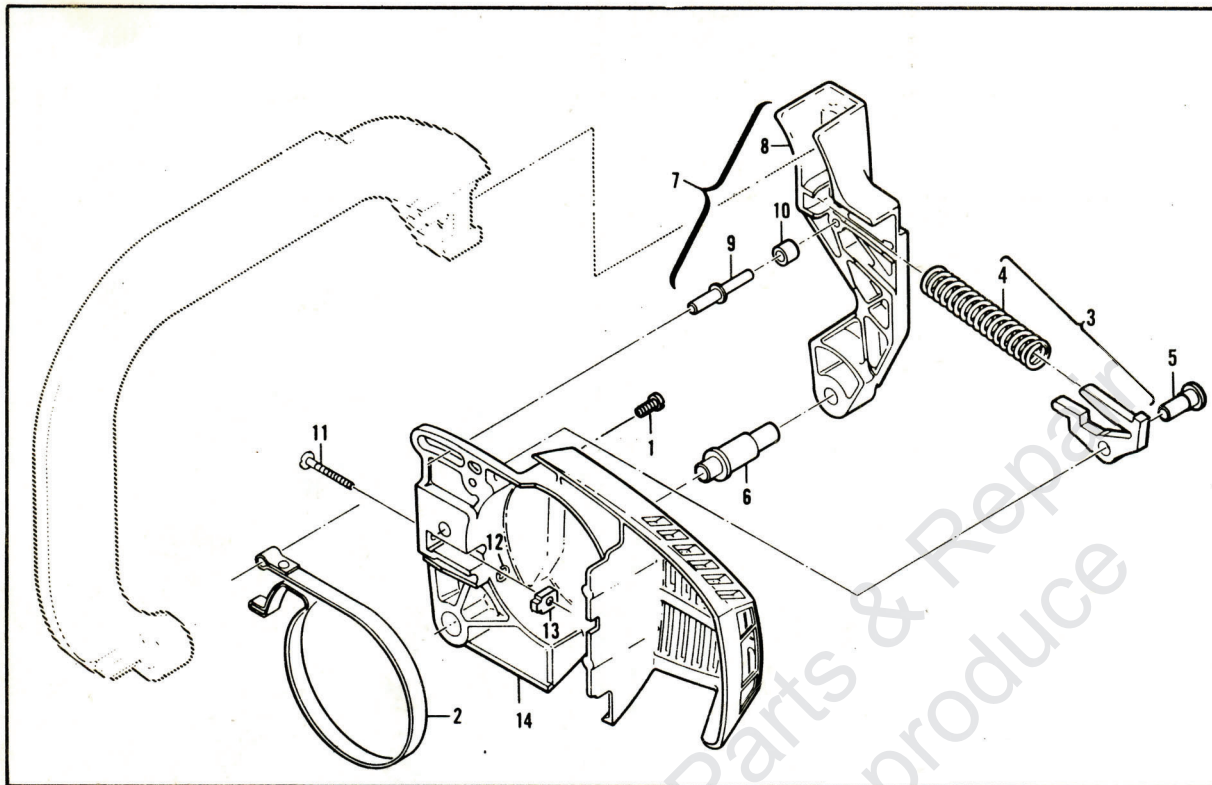
Figure 4. Powerhead Assembly

| ITEM NO. | PART NUMBER | DESCRIPTION | UNITS PER ASY. | ITEM NO. | PART NUMBER | DESCRIPTION | UNITS PER ASY. |
|----------|-------------|-------------------------------------------|----------------|----------|-------------|-------------------------------|----------------|
| 1 | 83898 | Connector-Outlet | 1 | 39 | -215351 | . Wire Assembly-Spark Plug | 1 |
| 2 | 84613 | Connector-Pump | 1 | 40 | 110364 | Screw-Pan hd 6-32 x 5/8 | 1 |
| 3 | 83896 | Bail-Mounting | 1 | 41 | 69344 | Wire Assembly-Coil | 1 |
| 4 | -216563 | Pump Assembly-Oiler | 1 | 42 | 110041 | Screw-Pan hd 8-32 x 1/2 s/t | 1 |
| 5 | - - | ⑨ . "0" Ring | 1 | 43 | 85358 | Condenser | 1 |
| 6 | - - | ⑨ . Ring-Pump piston | 1 | 44 | 100035 | Nut-Hx 6-32 | 1 |
| 7 | - - | ⑨ . Piston Assembly-Pump | 1 | 45 | 84502 | Connector-Stop switch | 1 |
| 8 | 83891 | . Spring-Pump | 1 | 46 | 67841 | Cover-Breaker box | 1 |
| 9 | - - | ⑨ . Sleeve-Pump | 1 | 47 | 69323 | Seal-Breaker box | 1 |
| 10 | - - | ⑨ . Eyelet | 1 | 48 | 110969 | Screw-Hex hd 8-32 x 1/2 | 2 |
| 11 | 110651 | . Screw-Adjustment | 1 | 49 | 69322 | Washer-Special | 1 |
| 12 | -216564 | . Body Assembly-Pump | 1 | 50 | 105976 | Washer-#8 | 1 |
| 13 | 110653 | "0" Ring | 1 | 51 | 88811 | Breaker Assembly | 1 |
| 14 | -215411 | ① Kit-Muffler | 1 | 52 | 84505A | Kit-Breaker box | 1 |
| 15 | 110681 | ① . Screw-Skt hd 10-24 x 1/4 | 2 | 53 | 92037 | . Washer | 1 |
| 16 | 92961 | ① . Deflector-Exhaust | 1 | 54 | -216857 | Screw-Hex hd 12-24 x 1 | 4 |
| 17 | 213327 | ① . Screw-Special | 2 | 55 | 214257 | ③ Kit-Cylinder | 1 |
| 18 | - - | ① . Body-Cover | 1 | 56 | 83856 | ③ . Bolt-Bar mounting | 1 |
| 14 | -215412 | ② Kit-Muffler | 1 | 57 | 110914 | ③ . Plug-Cup | 4 |
| 15 | 110681 | ② . Screw-Skt hd 10-24 x 1/4 | 2 | 55 | 214162 | ④ Kit-Cylinder | 1 |
| 16 | 92961 | ② . Deflector-Exhaust | 1 | 56 | 83856 | ④ . Bolt-Bar mounting | 1 |
| 17 | -213025 | ② . Screw-Special | 2 | 57 | 11091 | ④ . Plug-Cup | 4 |
| 18 | 93655 | ② . Body-Cover | 1 | 58 | 92274 | ④ . Piston Assembly | 1 |
| 19 | -214223 | Spark Plug (A,C,D,G,J,K,N,P, R,S,T,U,) | 1 | 59 | 92752 | ④ . . Set-Piston rings | 1 |
| 19 | 93018 | Spark Plug (B,E,F,H,M) | 1 | 60 | 110538 | ④ . . Bearing-Needle | 2 |
| 20 | -216039 | Rod-Throttle | 1 | 58 | 94476 | ⑤ Piston Assembly | 1 |
| 21 | 89059 | Hose- Fuel | 1 | 59 | 95143 | ⑤ . Set-Piston rings | 1 |
| 22 | 90660 | Adaptor-Fuel hose | 1 | 60 | 110538 | ⑤ . Bearing-Needle | 2 |
| 23 | 110908 | "0" Ring | 1 | 61 | 94662 | ⑥ Piston Assembly | 1 |
| 24 | -110961 | Nut-Hex 5/16-24 | 1 | 62 | 95143 | ⑥ . Set-Piston rings | 1 |
| 25 | -94737 | Flywheel/Pawl Assembly | 1 | 63 | 92836 | ⑥ . Pin-Piston | 1 |
| 26 | 68796 | . Pin-Pawl | 2 | 64 | 111026 | ⑥ . Ring-Snap | 2 |
| 27 | 67814 | . Spring-Pawl | 2 | 65 | 94135 | ⑥ Connecting Rod Assembly | 1 |
| 28 | 94493 | . Pawl-Starter | 2 | 66 | 94654 | ⑥ . Screw-Connecting rod | 2 |
| 29 | 102164 | Key-Woodruff | 1 | 67 | 68095 | ⑥ . Roller-Needle (set of 20) | 1 |
| 30 | 110586 | Screw-Pan hd 8-32 x 1-3/4 | 3 | 68 | 110984 | ⑥ . Bearing-Needle | 1 |
| 31 | 105976 | Washer-#8 | 3 | 69 | 66867 | ⑦ Pin-Piston | 1 |
| 32 | 67177 | Washer-Insulating | 3 | 70 | 68097 | ⑦ Connecting Rod Assembly | 1 |
| 33 | 68198 | Tube-Insulating | 3 | 71 | -94654 | ⑦ . Screw-Special | 2 |
| 34 | - - | Carburetor Assembly (Fig. 3,4) | 1 | 72 | 68095 | ⑦ . Roller-Needle (set of 20) | 1 |
| 35 | 68197 | Gasket-Carburetor | 1 | 73 | 213282 | ⑧ Bearing-Crankshaft | 2 |
| 36 | -214349 | Insulator-Carburetor | 1 | 74 | 83859 | Seal-Crankshaft oil | 2 |
| 37 | 90714 | Gasket-Insulator | 1 | 73 | 93763 | ⑧ Sleeve Assembly-Bearing | 1 |
| 38 | 84957 | Coil & Lamination Assembly | 1 | 74 | 83859 | . Seal-Crankshaft | 1 |
| | | | | 75 | 91932 | Crankshaft | 1 |

- ① Used on models with serial number prefix 14-.
- ② Used on models with serial number prefix 11-, 12- and 13-.
- ③ Used on models with serial number prefix 12-, 13- and 14-.
- ④ Used on models with serial number prefix 11-.
- ⑤ Used on models with serial number prefix 12-.
- ⑥ Used on models with serial number prefix 13- and 14-.
- ⑦ Used on models with serial number prefix 11- and 12-.
- ⑧ One of two types of crankshaft bearings used on models with serial number prefix 14-. Replacement crankshaft bearing must be the same as originally used on unit. Identify parts before ordering. All service replacement cylinders will be manufactured to use only crankshaft Bearing, P/N 213282.
- ⑨ Contained in Oil Pump Repair Kit, P/N -216426.

MAC 110 MAC 120

Figure 5. CHAIN BRAKE Assembly.



| ITEM NO. | PART NUMBER | DESCRIPTION | UNITS PER ASY. |
|----------|-------------|----------------------------|----------------|
| - | 216417 | CHAIN BRAKE Assembly | |
| 1 | 111047 | ①. Screw Pan hd 8-32 x 5/8 | 1 |
| 2 | 94709 | . Band-Brake | 1 |
| 3 | -215758 | . Kit-Latch | 1 |
| 4 | - | . Spring-Compression | 1 |
| 5 | 93602 | . Pivot-Latch | 1 |
| 6 | 92482 | . Pivot-Lever | 1 |
| 7 | 214375 | . Lever Assembly-Actuating | 1 |

| ITEM NO. | PART NUMBER | DESCRIPTION | UNITS PER ASY. |
|----------|-------------|---------------------|----------------|
| 8 | 92867 | . . Lever | 1 |
| 9 | 213907 | . . Pin-Roller | 1 |
| 10 | 214368 | . . Bearing-Roller | 1 |
| 11 | 90658 | . Screw-Adjusting | 1 |
| 12 | 110907 | . Ring-Retaining | 1 |
| 13 | 84929 | . Nut-Bar adjusting | 1 |
| 14 | -216437 | . Housing-Brake | 1 |

① Not used on some early models.

Tools & Accessories.

| PART NUMBER | DESCRIPTION |
|-------------|----------------------------------|
| 95169 | Kit-Spark Arrester |
| 91485 | Wrench-Socket |
| 85687 | Wrench-Screwdriver |
| 88755 | Scrench |
| 93283 | Case-Carrying, 12" |
| -214201 | . Bar Guard, 12" |
| 93090 | Guide-Timing |
| 85062 | Kit-Piston Tool (11-) |
| 68915A | Kit-Piston Tool (12-, 13-, 14-,) |
| 90256 | Kit-Tune up |
| -214215 | Guide-File |

| PART NUMBER | DESCRIPTION |
|-------------|----------------------------------------|
| -214211 | Kit-Tool Maintenance |
| 93900 | Kit-Pressure Test |
| -215432 | Tool-Pressure Test |
| 501334 | Tester-Ignition |
| -214194 | Lubri-Gun |
| 85702 | Lubricant-Custom, 6 oz. can |
| 85703 | Lubricant-Custom, 6 oz. cans, 1-6 pack |
| 67537 | Loctite |
| 69794 | Locquic |
| 110083 | R.T.V. Sealant |