

# ILLUSTRATED PARTS LIST

MODELS	SERIAL NUMBER PREFIX	MODELS	SERIAL NUMBER PREFIX
600016A	16-	6000160	16-
600016F	16-	600016P	16-
600016N	16-	600016Q	16-

McCulloch chain saws are identified by a model number (in this instance, 600016 ) followed by a suffix letter (A, B, C, etc.) stamped on the identification plate attached to the saw. Suffix letters denote variations in parts or assemblies in the manufacture of the saw.

Part numbers listed in this I.P.L. which have a suffix letter or letters following the description, indicate the part is used only on the model(s) identified by the letter or letters.

Part numbers and descriptions without suffix letter or letters apply to all versions of the chain saw model.

Part numbers which have one or more dots (.) preceding their descriptions may be ordered individually, but they are also included in the kit or assembly whose description begins directly above the dot(s).

Part numbers in this IPL which were not in the previous IPL covering these saws, are indicated by a dash (-) preceding the new part number.

The policy of McCulloch is one of continual improvement in design, manufacturing and engineering advancement wherever possible to assure still finer two-cycle power tools. Hence, specifications, equipment, colors, design and manufacturer's suggested list prices are subject to change without notice and McCulloch reserves the right to make such changes without prior notification or obligation to backfit or supply backfit components for units previously shipped from the factory.

November 1982



## MAC 110 MAC 120 CHAIN SAW



### - CONTENTS -

	Page
Figure 1. General . . . . .	2
Figure 2. Carburetor Assembly . . . . .	4
Figure 3. Carburetor Assembly . . . . .	5
Figure 4. Powerhead Assembly . . . . .	6
Figure 5. CHAIN BRAKE Assembly . . . . .	8
Bar & Chain Combinations . . . . .	3
Tools & Accessories . . . . .	8
Service Specifications . . . . .	3







Figure 1. General

ITEM NO.	PART NUMBER	DESCRIPTION	UNITS PER ASY.	ITEM NO.	PART NUMBER	DESCRIPTION	UNITS PER ASY.
1	110676	Nut-Hx 1/4-28	2	32	- -	Throttle Latch Assy (Fig. 3,4)	
2	110972	Screw-Hx 1/4-28 x 3/4	1	33	110807	Screw-Pan hd 8-32 x 5/16	2
3	- -	CHAIN BRAKE Assy (Fig. 5)		34	93290	Deflector-Sawdust	1
4	- -	Chain Assy (See below)		35	214987	Shroud	1
5	- -	Bar (See below)		36	91853	Cover-Air cleaner	1
6	110639	Screw-Hx hd 12-24 x 1	2	37	91796	. Screw-Air cleaner	1
7	-214718	Cover-Fuel & Oil tank	1	38	91460	Filter-Air	1
8	93194A	Washer-Rubber	1	39	84918	Washer-Air seal	1
9	92479	Lever-Handguard	1	40	110953	Screw-Hx hd 12-24 x 5/8	3
10	213278	Kit-Clutch	1	41	110959	Screw-Hx hd 8-32 x 1/2	3
11	93608	. Spring Assembly	1	42	90425	Cover-Starter	1
12	110957	. Rivet	2	43	110041	Screw-Pan hd 8-32 x 1/2	1
13	85064	. Plate	2	44	68497	Washer-Special	1
14	94247	. Kit-Rotor	1	45	213261	Drum/Rope Assembly	1
15	94244	. . Nut-Clutch	1	46	83203	. Rope-Starter	1
16	94243	. . Plate-Dust	1	47	83078	Spring-Rewind	1
17	214390	Drum/Spkt/Brng Assembly	1	48	91255	Kit-Starter handle	1
18	91222	. Kit-Needle bearing	1	49	105490	. Washer-Starter handle	1
19	110953	Screw-Hx hd 12-24 x 5/8	1	50	110953	Screw-Hx hd 12-24 x 5/8	2
20	110686	Screw-Hx hd 13-16 x 2	1	51	84520A	Plate-Washer	1
21	214505	Frame & Grip Assembly	1	52	84519	Sleeve-Handle	2
22	-216715	Fuel & Oil Tank Assembly	1	53	-94896	Handle/Trigger Latch Assy	1
23	91148	. Seal-Fuel vent	1	54	93869	Trigger-Throttle	1
24	84956	. Pickup-Fuel	1	55	83940	Spring-Trigger	1
25	83946	. Spring-Piston	1	56	83935	Contact-Switch	1
26	85557	. Body-Oiler	1	57	83936	Protector-Switch	1
27	91283	Cap-Fuel/Oil (unvented)	2	58	83934	Button-Switch	1
28	-213906	Piston-Manual Oiler	1	59	95202	Plate-Name (MAC 120)	1
29	84611	Rod-Manual oiler	1	59	95203	Plate-Name (MAC 110)	1
30	110672	Screw-Oval hd 4-40 x 1	1	60	- -	Powerhead Assembly (Fig. 4)	
31	83870	Knob-Choke	1				

Bar & Chain Combinations

214233	Bar-10" Mini Pro
215250	Bar-10" Mini Mac
214918N	Chain Assembly-10" MM 370G
214227N	Chain Assembly-10" MP 370G
214234	Bar-12" Mini Pro

214921N	Chain Assembly-12" PM 370G
214916N	Chain Assembly-12" MM 370G
214235	Bar-14" Mini Pro
214913N	Chain Assembly-14" MM 370G

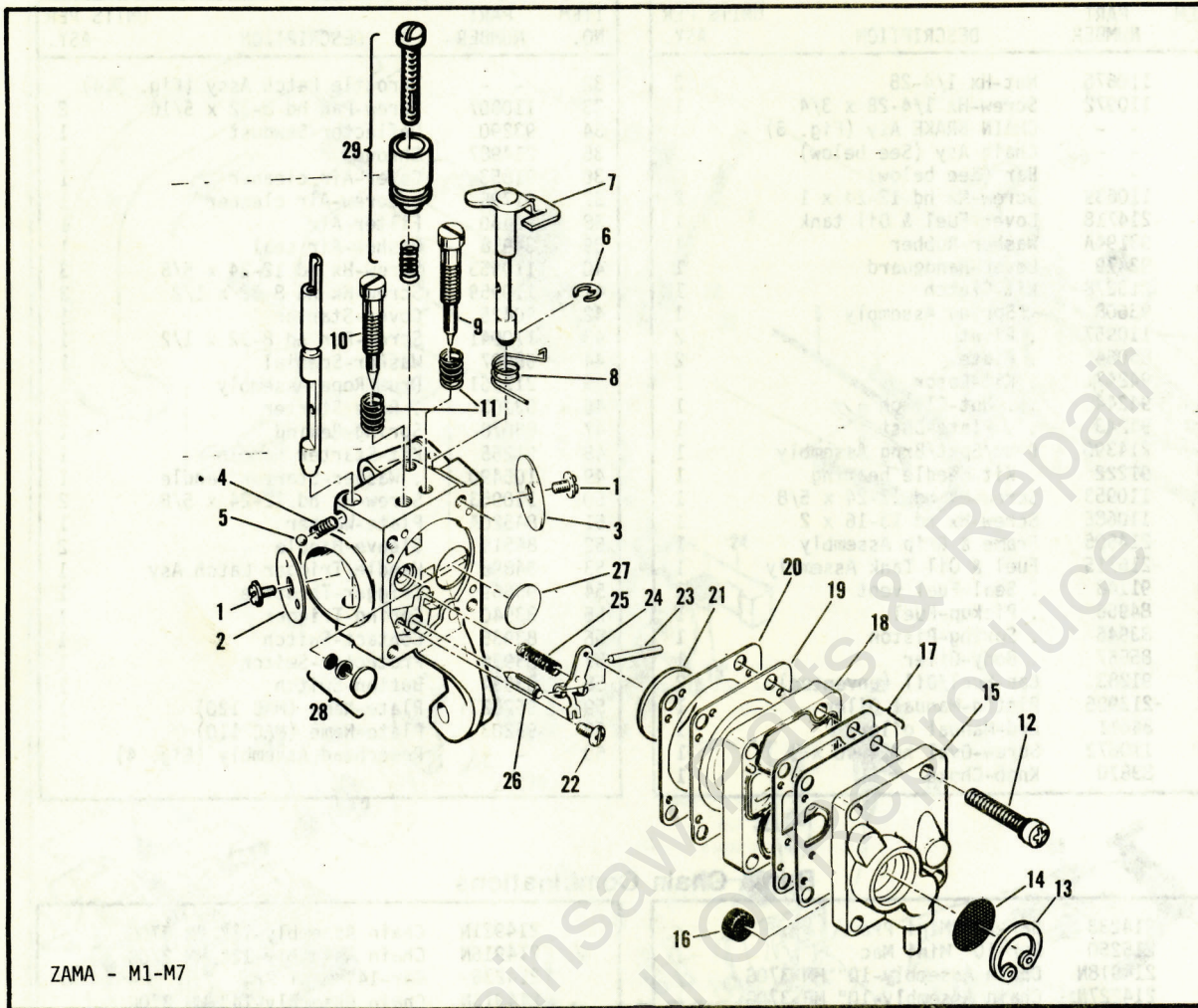
Service Specifications

Displacement	2.0 cu. in.
Bore and Stroke	1.430 x 1.201 in. (36.5 x 30.5 mm)
Bearings	Main: Needle Conn. Rod: Needle
Intake System	3rd Port, Piston Timed
Fuel Tank Capacity	10.8 fl. oz. (320 cc)
Chain Oiler Capacity	3.2 fl. oz. (95 cc)
Clutch Engaging Speed	3800 to 4200 rpm
Idle Speed	2700 to 2900 rpm
Ignition	Magneto

Carburetor	Diaphragm Type, 2 needle
Fuel Type	Regular grade, leaded
Fuel/Oil Mixture	40:1 w/ McCulloch Oil
Filter System - Fuel	Felt Fuel Filter
Filter System - Air	Flocked Screen Filter
Lamination Gap	.008 to .012" (.203 to .304 mm)
Breaker Point Gap	.018" (.457 mm)
Timing	26° B.T.D.C.
Piston Rings	2 Cast Iron Compression
Weight (w/ bar & chain):	
MAC 110	9.6 lbs. (4.3 kg)
MAC 120	9.7 lbs. (4.4 kg)



Figure 2. Carburetor Assembly



ZAMA - M1-M7

ITEM NO.	PART NUMBER	DESCRIPTION	UNITS PER ASY.
	214082A	① Carburetor Asy - Zama M1-M7	1
1	-	Screw - Plate	2
2	-	Valve - Choke	1
3	-	Valve - Throttle	1
4	-	Spring - Choke	1
5	-	Ball - Friction	1
6	-	"E" Ring	1
7	-	Shaft Assembly - Throttle	1
8	-	Spring - Throttle return	1
9	215275	④ Screw - Idle adjustment	1
10	215276	④ Screw - Main adjustment	1
11	91819	④ Spring - Screw	2
12	-	Screw - Cover	4
13	-	"C" Ring	1
14	215284	② Strainer	1

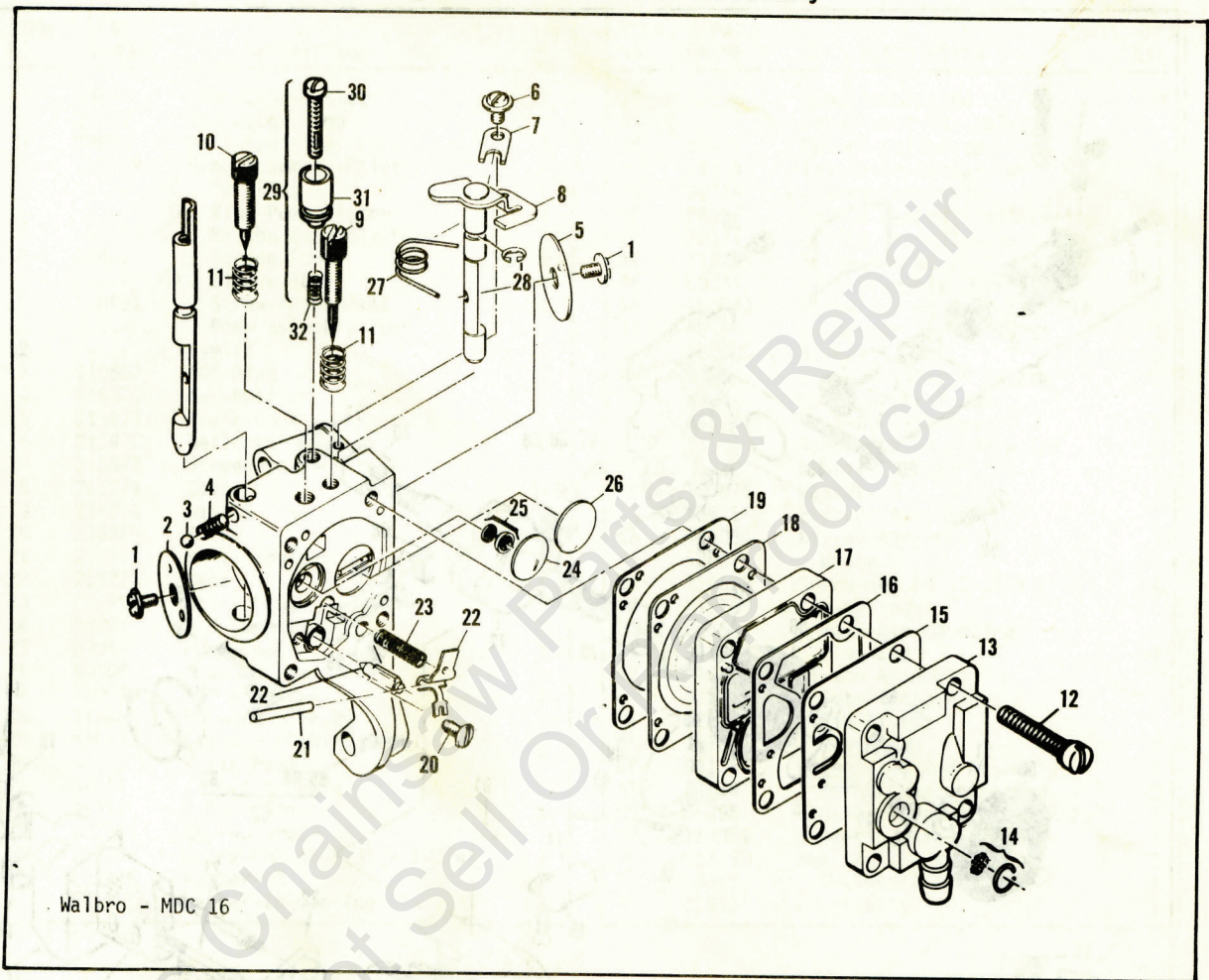
ITEM NO.	PART NUMBER	DESCRIPTION	UNITS PER ASY.
15	-	Cover - Pump	1
16	91820	② Screen	1
17	-	③② Kit - Pump diaphragm	1
18	-	Body - Pump	1
19	215282	③② Diaphragm - Main	1
20	215280	③② Gasket - Main	1
21	215277	② Disk	1
22	91814	② Screw	1
23	91813	② Pin - Arm	1
24	215278	② Arm - Needle valve	1
25	91811	② Spring - Arm	1
26	91810	② Valve - Needle	1
27	93951	② Plug - Welsh	1
28	215287	② Valve Asy - Main nozzle	1
29	93437	Latch Assembly - Throttle	1

- ① One of two carburetors used. Identify parts before ordering.
- ② Contained in Repair Kit, P/N 216721.
- ③ Contained in Gasket/Diaphragm Kit, P/N 216722.
- ④ Contained in Needle Kit, P/N 216734.

NOTE: Items not listed with part number are for identification and disassembly sequence purposes only. They are not available as service parts.



Figure 3. Carburetor Assembly



Walbro - MDC 16

ITEM NO.	PART NUMBER	DESCRIPTION	UNITS PER ASY.
	214082B①	Carburetor Asy - Walbro MDC 16	1
1	-	Screw - Plate	2
2	-	Plate - Choke	1
3	-	Ball - Choke friction	1
4	-	Spring - Choke friction	1
5	-	Plate - Throttle	1
6	-	Screw - Clip	1
7	-	Clip - Throttle shaft	1
8	-	Shaft Asy - Throttle	1
9	86446 ④	Needle - Idle	1
10	86447 ④	Needle - High speed	1
11	67502 ④	Spring - Needle	2
12	-	Screw Asy - Body	4
13	-	Cover Asy - Pump	1
14	85629 ②	Kit - Vent screen	1
15	68563③②	Diaphragm - Fuel pump	1
16	85035③②	Gasket - Pump diaphragm	1

ITEM NO.	PART NUMBER	DESCRIPTION	UNITS PER ASY.
17	-	Body - Fuel pump	1
18	85036③②	Diaphragm - Metering	1
19	85034③②	Gasket - Diaphragm	1
20	67500 ②	Screw - Lever pin	1
21	67508 ②	Pin - Lever	1
22	85059 ②	Kit - Needle & Lever	1
23	68567 ②	Spring - Lever	1
24	68559 ②	Plug - Welsh 7/16	1
25	83758 ②	Kit - Check valve	1
26	68560 ②	Plug - Welsh 1/2	1
27	89785	Spring - Throttle return	1
28	-	Ring - Retaining	1
29	-	Latch Asy - Throttle	1
30	-	Screw - Long lock	1
31	-	Latch - Throttle	1
32	-	Spring - Compression	1

- ① One of two carburetors used. Identify parts before ordering.
- ② Contained in Repair Kit, P/N 216731.
- ③ Contained in Gasket/Diaphragm Kit, P/N 216727.
- ④ Contained in Needle Kit, P/N 216725.

NOTE: Items not listed with part number are for identification and disassembly sequence purposes only. They are NOT available as service parts.



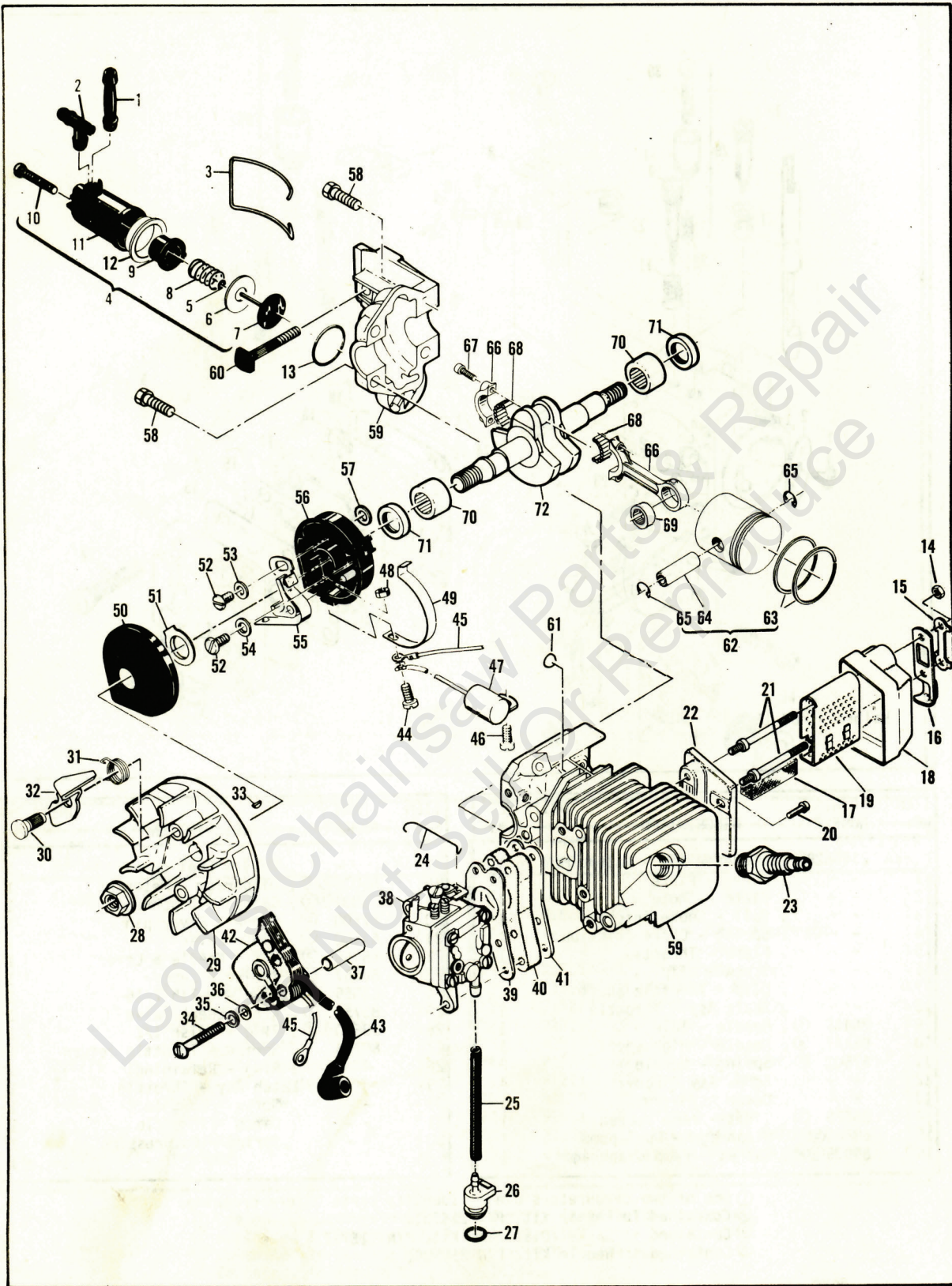


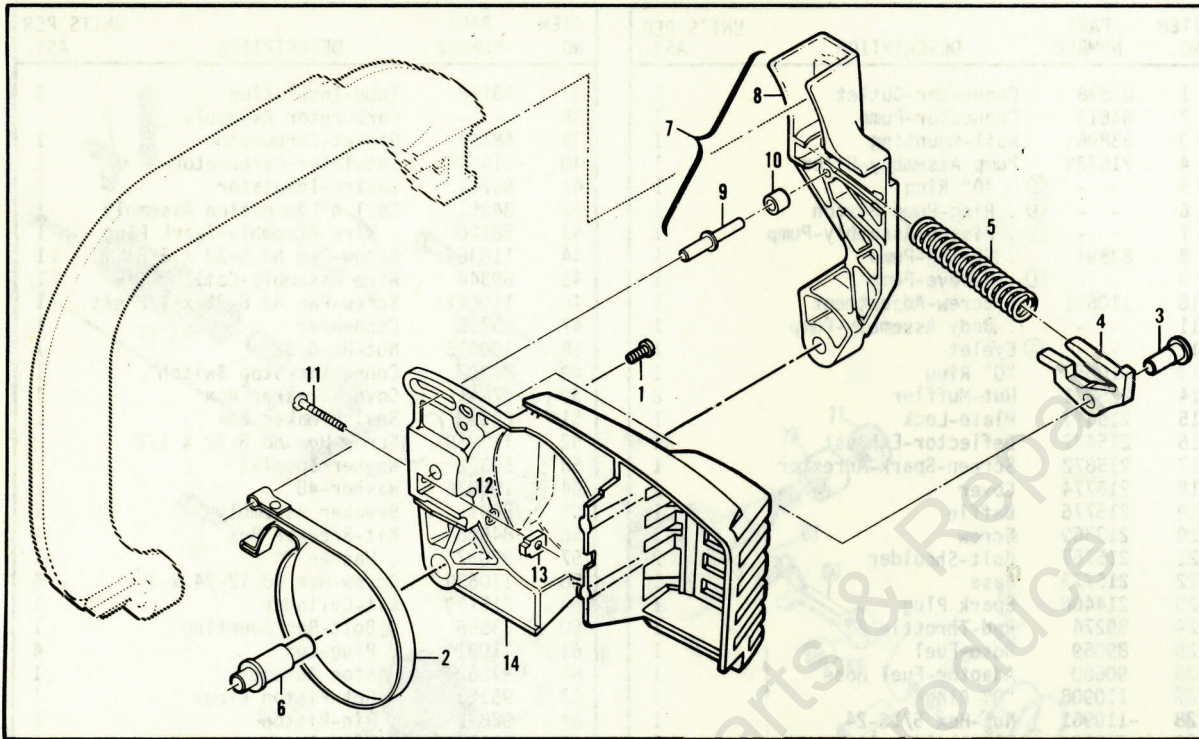
Figure 4. Powerhead Assembly.







Figure 5. CHAIN BRAKE Assembly



ITEM NO.	PART NUMBER	DESCRIPTION	UNITS PER ASY.
	-216551	CHAIN BRAKE Assembly	
1	111047	. Screw - Pan hd 8-32 x 5/8	1
2	94709	. Band - Brake	1
3	93602	. Pivot - Latch	1
4	215758	. Kit - Latch	1
5	-	. Spring - Compression	1
6	92482	. Pivot - Lever	1
7	214375	. Lever Assembly - Actuating	1

ITEM NO.	PART NUMBER	DESCRIPTION	UNITS PER ASY.
8	92867	. . Lever	1
9	213907	. . Pin - Roller	1
10	214368	. . Bearing - Roller	1
11	90658	. . Screw - Adjusting	1
12	110907	. Ring - Retaining	1
13	84929	. Nut - Bar Adjusting	1
14	-216553	. Housing - Brake	1

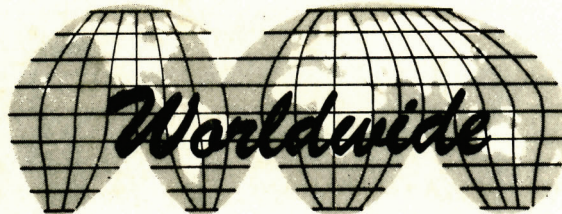
Tools & Accessories

PART NUMBER	DESCRIPTION
95169	Kit - Spark Arrester
91485	Wrench - Socket
85687	Wrench - Screwdriver
88755	Scrench
93283	Case - Carrying, 12"
-214201	. Bar Guard, 12"
93090	Guide - Timing
68915A	Kit - Piston Tool
90256	Kit - Tune up
-214215	Guide - File

PART NUMBER	DESCRIPTION
-214211	Kit - Tool Maintenance
93900	Kit - Pressure Test
-215432	Tool - Pressure Test
501334	Tester - Ignition
-214194	Lubri-Gun
85702	Lubricant - Custom, 6 oz. can
85703	Lubricant - Custom, 6 oz. cans, 1-6 pack
67537	Loctite
69794	Locquic
110083	R.T.V. Sealant



# **McCULLOCH** **CORPORATION**



● **MANUFACTURING** ● **SALES** ● **SERVICE** ●

**McCULLOCH**  
**CORPORATION**

900 LAKE HAVASU AVE.  
LAKE HAVASU CITY, AZ 86403-2891

**FOR SERVICE-RELATED PROBLEMS,  
REPAIR OR MAINTENANCE  
TAKE YOUR UNIT TO THE NEAREST  
AUTHORIZED McCULLOCH SERVICING  
DEALER LISTED UNDER SAWS IN YOUR  
TELEPHONE DIRECTORY YELLOW PAGES.**

If additional assistance is required, call this toll-free hot-line:  
(800) 423-6302

Arizona residents call collect (602) 453-3681