

ILLUSTRATED PARTS LIST

MODELS	SERIAL NUMBER PREFIX	MODELS	SERIAL NUMBER PREFIX
600016A	17-	600016L	17-
600016B	17-	600016M	17-
600016C	17-	600016N	17-
600016D	17-	600016O	17-
600016E	17-	600016P	17-
600016F	17-	600016Q	17-
600016G	17-	600016T	17-
600016K	17-		

McCulloch chain saws are identified by a model number (in this instance, 600016) followed by a suffix letter (A, B, C, etc.) stamped on the identification plate attached to the saw. Suffix letters denote variations in parts or assemblies in the manufacture of the saw.

Part numbers listed in this I.P.L. which have a suffix letter or letters following the description, indicate the part is used only on the model(s) identified by the letter or letters.

Part numbers and descriptions without suffix letter or letters apply to all versions of the chain saw model.

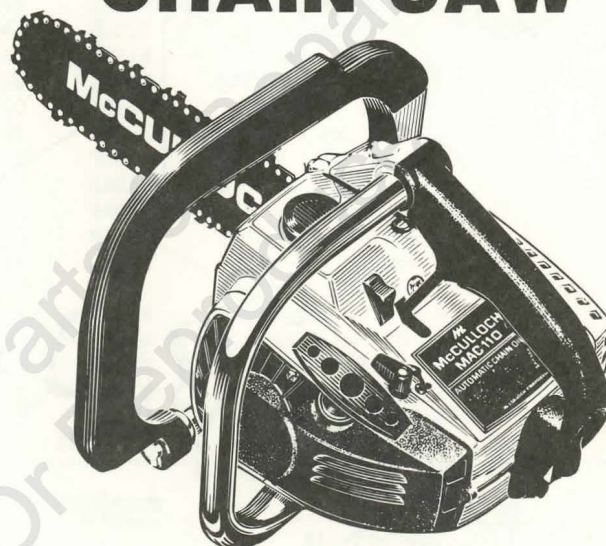
Part numbers which have one or more dots (.) preceding their descriptions may be ordered individually, but they are also included in the kit or assembly whose description begins directly above the dot(s).

Part numbers in this IPL which were not in the previous IPL covering these saws, are indicated by a dash (-) preceding the new part number.

The policy of McCulloch Corporation is one of continual improvement in design, manufacturing and engineering advancement wherever possible to assure still finer two-cycle power tools. Hence, specifications, equipment, colors, design and manufacturer's suggested list prices are subject to change without notice and McCulloch Corporation reserves the right to make such changes without prior notification or obligation to backfit or supply backfit components for units previously shipped from the factory.

September 1983

MAC™ 110 MAC™ 120 MAC™ 130 CHAIN SAW



- CONTENTS -

	Page
Figure 1. General	2
Figure 2. Carburetor Assembly	4
Figure 3. Carburetor Assembly	5
Figure 4. Powerhead Assembly	6
Figure 5. CHAIN BRAKE Assembly	8
Bar & Chain Combinations	3
Tools & Accessories	8
Service Specifications	3


McCULLOCH
CORPORATION

Printed in U.S.A.

P.O. Box 92180, Los Angeles, CA. 90009

© U.S.A. - McCulloch Corporation, 1983

217019

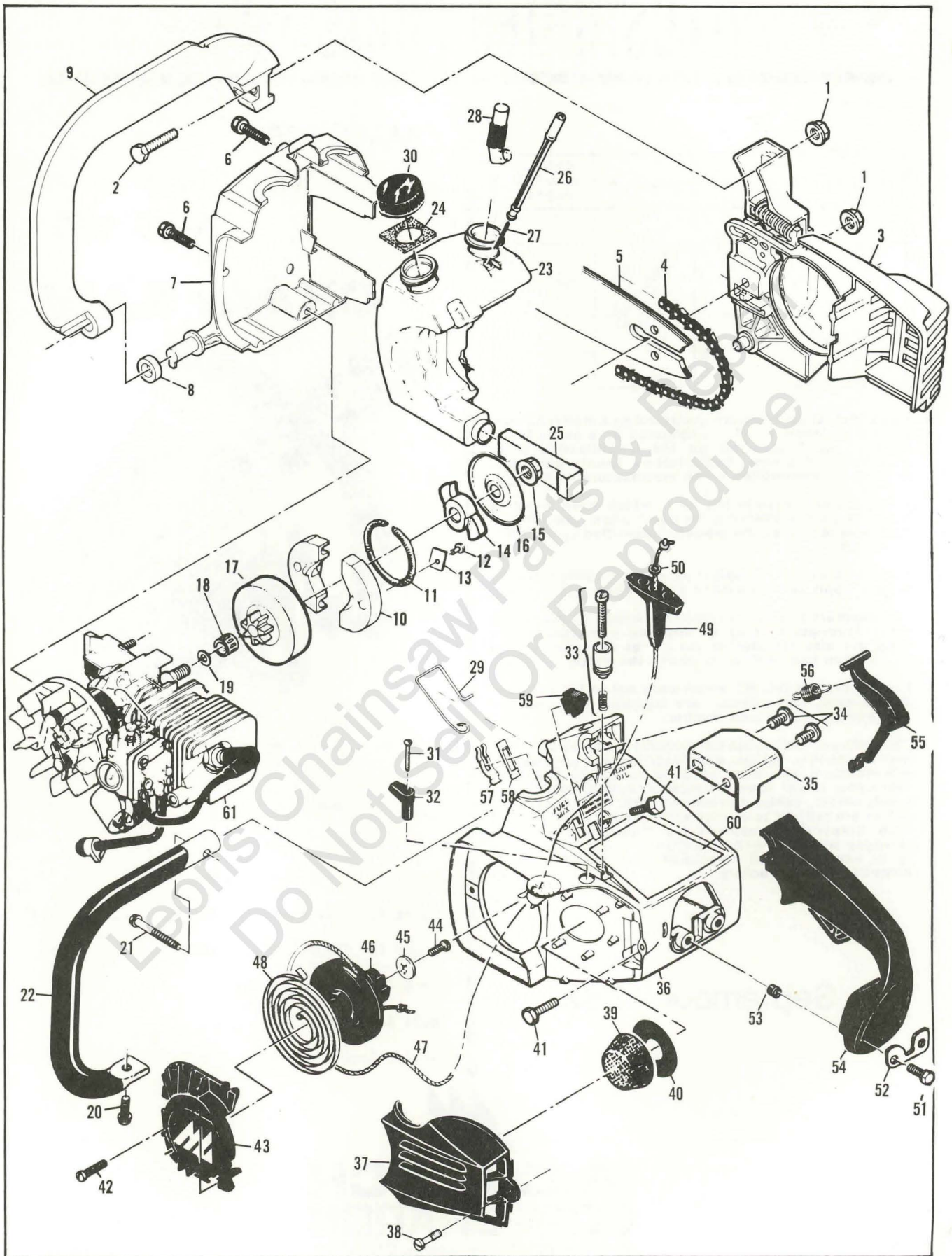


Figure 1. General

Figure 1. General.

ITEM NO.	PART NUMBER	DESCRIPTION	UNITS PER ASY.
1	110676	Nut - Hx 1/4-28	2
2	110972	Screw - Hx hd 1/4-28 x 3/4	1
3	- -	CHAIN BRAKE Assy (Fig. 5)	
4	- -	Chain Assy (See below)	
5	- -	Bar (See below)	
6	110639	Screw - Hx hd 12-24 x 1	2
7	214718	Cover - Fuel & Oil Tank	1
8	93194A	Washer - Rubber	1
9	92479	Lever - Handguard	1
10	213278	Kit - Clutch	1
11	93608	. Spring Assembly	1
12	110957	. Rivet	2
13	85064	. Plate	2
14	94247	. Kit - Rotor	1
15	94244	. . Nut - Clutch	1
16	94243	. . Plate - Dust	1
17	215252	Drum/Spkt/Bearing Assy	1
18	91222	. Kit - Needle Bearing	1
19	215259	. Washer - Sprocket	1
20	110953	Screw - Hx hd 12-24 x 5/8	1
21	110686	Screw - Hx hd 13-16 x 2	1
22	214505	Frame & Grip Assembly	1
23	216715	Fuel & Oil Tank Assembly	1
24	91148	. Seal - Fuel Vent	1
25	84956	. Pickup - Fuel	1
26	213906	. Piston - Manual Oiler	1
27	83946	. Spring - Piston	1
28	85557	. Body - Oiler	1
29	84611	Rod - Manual Oiler	1
30	91283	Cap - Fuel & Oil (unvented)	2
31	110672	Screw - Oval hd 4-40 x 1	1

ITEM NO.	PART NUMBER	DESCRIPTION	UNITS PER ASY.
32	83870	Knob - Choke	1
33	- -	Throttle Latch Assy(Fig. 2,3)	1
34	110807	Screw - Pan hd 8-32 x 5/16	2
35	93290	Deflector - Sawdust	1
36	216960	Shroud	1
37	91853	Cover - Air Cleaner	1
38	91796	. Screw - Air Cleaner	1
39	91460	Filter - Air	1
40	84918	Washer - Air Seal	1
41	216490	Screw - Hx hd 12-24 x 3/4	3
42	110959	Screw - Hx hd 8-32 x 1/2	3
43	90425	Cover - Starter	1
44	110041	Screw - Pan hd 8-32 x 1/2	1
45	68497	Washer - Special	1
46	213261	Kit - Starter Drum	1
47	83203	. Rope - Starter	1
48	83078	Spring - Rewind	1
49	91255	Kit - Starter Handle	1
50	105490	. Washer - Starter Handle	1
51	110953	Screw - Hx hd 12-24 x 5/8	2
52	84520A	Plate - Washer	1
53	84519	Sleeve - Handle	2
54	94896	Kit - Handle	1
55	93869	Trigger - Throttle	1
56	83940	Spring - Trigger	1
57	83935	Contact - Switch	1
58	83936	Protector - Switch	1
59	83934	Button - Switch	1
60	95202	Plate - Name(MAC 120)	1
60	95203	Plate - Name(MAC 110)	1
60	93542	Plate - Name(MAC 130)	1
61	- -	Powerhead Assembly (Fig. 4)	

Bar & Chain Combinations

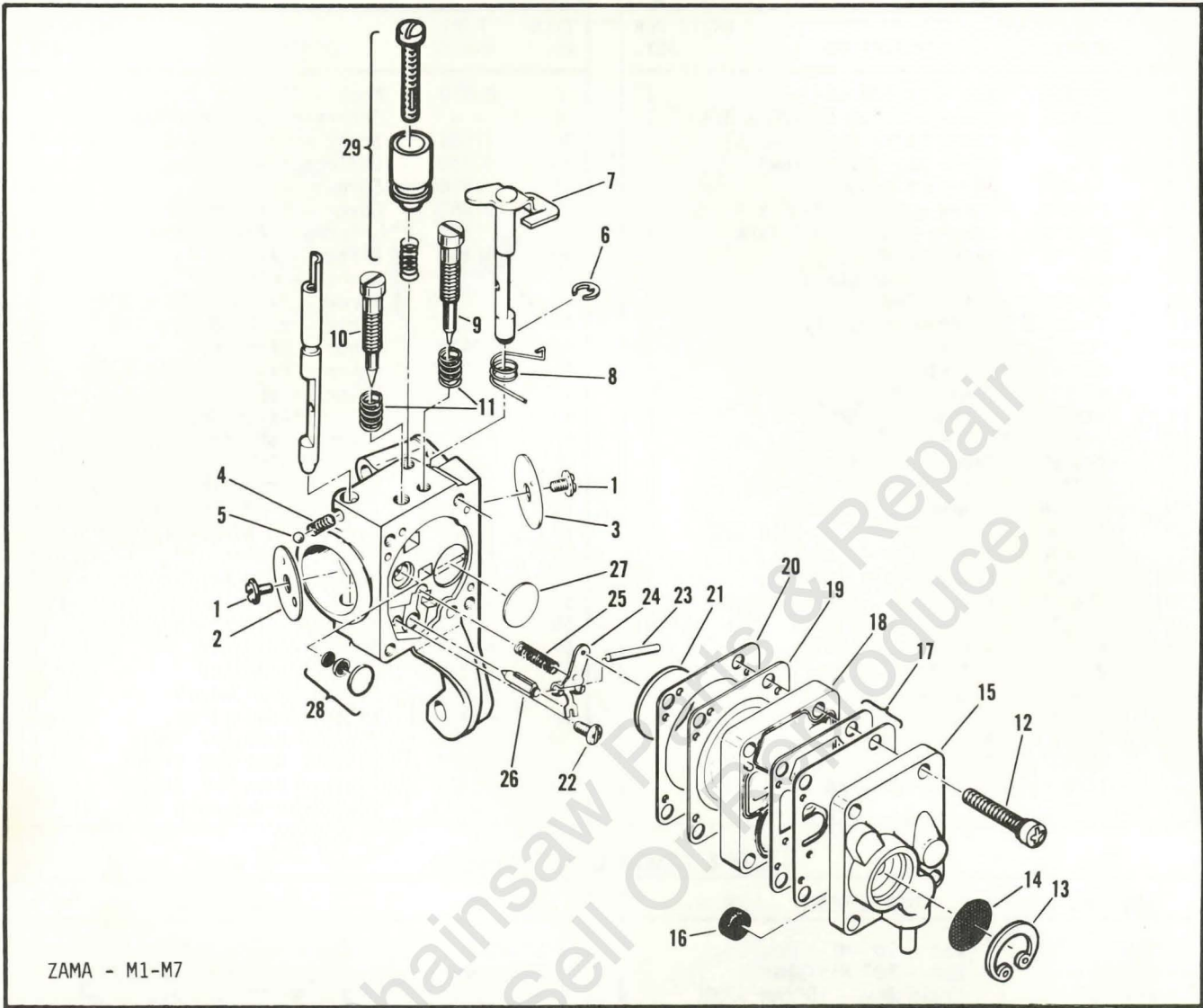
PART NO.	DESCRIPTION
214233	Bar - 10" Mini Pro
215250	Bar - 10" Mini Mac
214918N	Chain Assy - 10" MM 370GL
214923N	Chain Assy - 10" MP 370GL
214234	Bar - 12" Mini Pro

PART NO.	DESCRIPTION
214921N	Chain Assy - 12" MP 370GL
214916N	Chain Assy - 12" MM 370GL
214235	Bar - 14" Mini Pro
214913N	Chain Assy - 14" MM 370GL
214919N	Chain Assy - 14" MP 370GL

Specifications

Displacement	2.0 cu. in	Fuel Type	Regular grade, leaded
Bore & Stroke	1.430 x 1.201 in. (36.5 x 30.5 mm)	Fuel/Oil Mixture	40:1 w/McCulloch Oil
Bearings	Main: Needle Conn. Rod: Needle	Filter System-Fuel	Felt Fuel Filter
Intake System	3rd Port, Piston Timed	Filter System-Air	Flocked Screen Filter
Fuel Tank Capacity	10.8 fl. oz. (320 cc)	Lamination Gap008 to .012" (.203 to .304 mm)
Chain Oiler Capacity	3.2 fl. oz. (95 cc)	Timing	26 B.T.D.C.
Clutch Engaging Speed	3800 to 4200 R.P.M.	Piston Rings	2 Cast Iron Compression
Idle Speed	2700 to 2900 R.P.M.	Weight (w/bar & chain):	
Ignition	Electronic CDI	MAC 110	10.1 lbs. (4.6 kg)
Carburetor	Diaphragm type, 2 needle	MAC 120	10.3 lbs. (4.7 kg)
		MAC 130	10.4 lbs. (4.7 kg)

Figure 2. Carburetor Assembly.



ZAMA - M1-M7

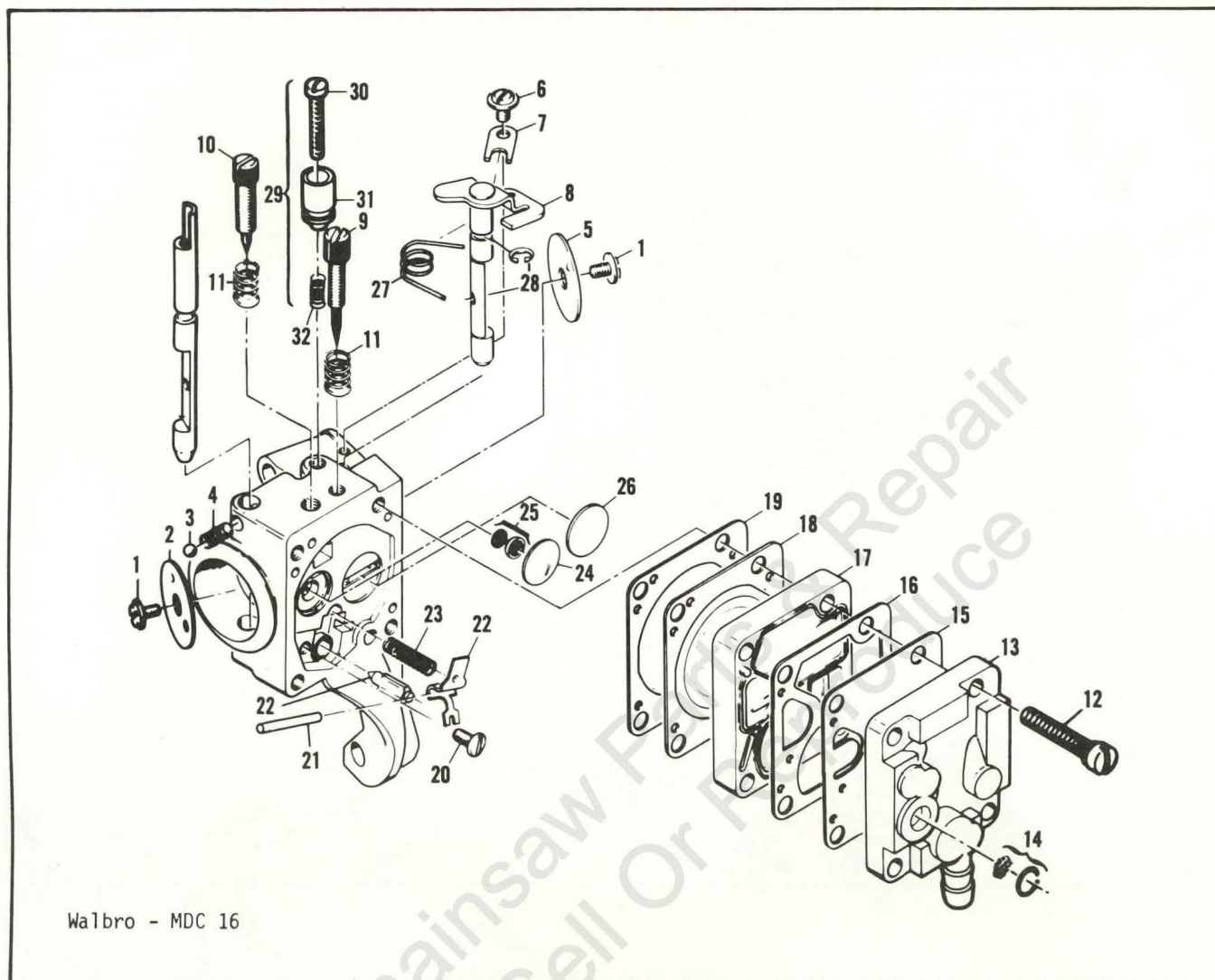
ITEM NO.	PART NUMBER	DESCRIPTION	UNITS PER ASY.
	214082B	① Carburetor Asy-Zama M1-M7	1
1	--	. Screw - Plate	2
2	--	. Valve - Choke	1
3	--	. Valve - Throttle	1
4	--	. Spring - Choke	1
5	--	. Ball - Friction	1
6	--	. "E" Ring	1
7	--	. Shaft Assembly - Throttle	1
8	--	. Spring - Throttle Return	1
9	--	④ . Screw - Idle Adjustment	1
10	--	④ . Screw - Main Adjustment	1
11	--	④ . Spring - Screw	2
12	--	. Screw - Cover	4
13	--	. "C" Ring	1
14	--	② . Strainer	1

ITEM NO.	PART NUMBER	DESCRIPTION	UNITS PER ASY.
15	--	. Cover - Pump	1
16	--	② . Screen	1
17	--	③② . Kit - Pump diaphragm	1
18	--	. Body - Pump	1
19	--	③② . Diaphragm - Main	1
20	--	③② . Gasket - Main	1
21	--	② . Disk	1
22	--	② . Screw	1
23	--	② . Pin - Arm	1
24	--	② . Arm - Needle Valve	1
25	--	② . Spring - Arm	1
26	--	② . Valve - Needle	1
27	--	② . Plug - Welch	1
28	--	② . Valve Asy - Main Nozzle	1
29	93437	Latch Asy - Throttle	1

- ① One of two carburetors used. Identify carburetor before ordering service replacement kits.
- ② Contained in Repair Kit, P/N 217079.
- ③ Contained in Gasket/Diaphragm Kit, P/N 216722.
- ④ Contained in Needle Kit, P/N 217086.

NOTE: Individual parts are shown for identification and disassembly sequence purposes only. They are NOT available as service replacement parts.

Figure 3. Carburetor Assembly



ITEM NO.	PART NUMBER	DESCRIPTION	UNITS PER ASY.
	214082B	Carburetor Asy-Walbro MDC 16	1
1	- -	. Screw-Plate	2
2	- -	. Plate-Choke	1
3	- -	. Ball-Choke friction	1
4	- -	. Spring-Choke friction	1
5	- -	. Plate-Throttle	1
6	- -	. Screw-Clip	1
7	- -	. Clip-Throttle shaft	1
8	- -	. Shaft Asy-Throttle	1
9	- - ③	. Needle-Idle	1
10	- - ③	. Needle-High speed	1
11	- - ③	. Spring-Needle	2
12	- -	. Screw Asy-Body	4
13	- -	. Cover Asy-Pump	1
14	- - ①	. Kit-Vent screen	1
15	- - ②①	. Diaphragm-Fuel pump	1
16	- - ②①	. Gasket-Pump diaphragm	1

ITEM NO.	PART NUMBER	DESCRIPTION	UNITS PER ASY.
17	- -	. Body-Fuel pump	1
18	- - ②①	. Diaphragm-Metering	1
19	- - ②①	. Gasket-Diaphragm	1
20	- - ①	. Screw-Lever pin	1
21	- - ①	. Pin-Lever	1
22	- - ①	. Kit-Needle & lever	1
23	- - ①	. Spring-Lever	1
24	- - ①	. Plug-Welsh 7/16	1
25	- - ①	. Kit-Check valve	1
26	- - ①	. Plug-Welsh 1/2	1
27	- -	. Spring-Throttle return	1
28	- -	. Ring-Retaining	1
29	93437	Latch Asy-Throttle	1
30	- -	. Screw-Long lock	1
31	- -	. Latch-Throttle	1
32	- -	. Spring-Compression	1

- ① Contained in Repair Kit, P/N 217084.
- ② Contained in Gasket/Diaphragm Kit, P/N 216727.
- ③ Contained in Needle/Spring Kit, P/N 217083.

NOTE: Items not listed with part numbers, except for those contained in the three kits, are shown for identification and disassembly sequence purposes only. They are NOT available as service parts. The only items available as service parts are the three kits and items with part numbers.

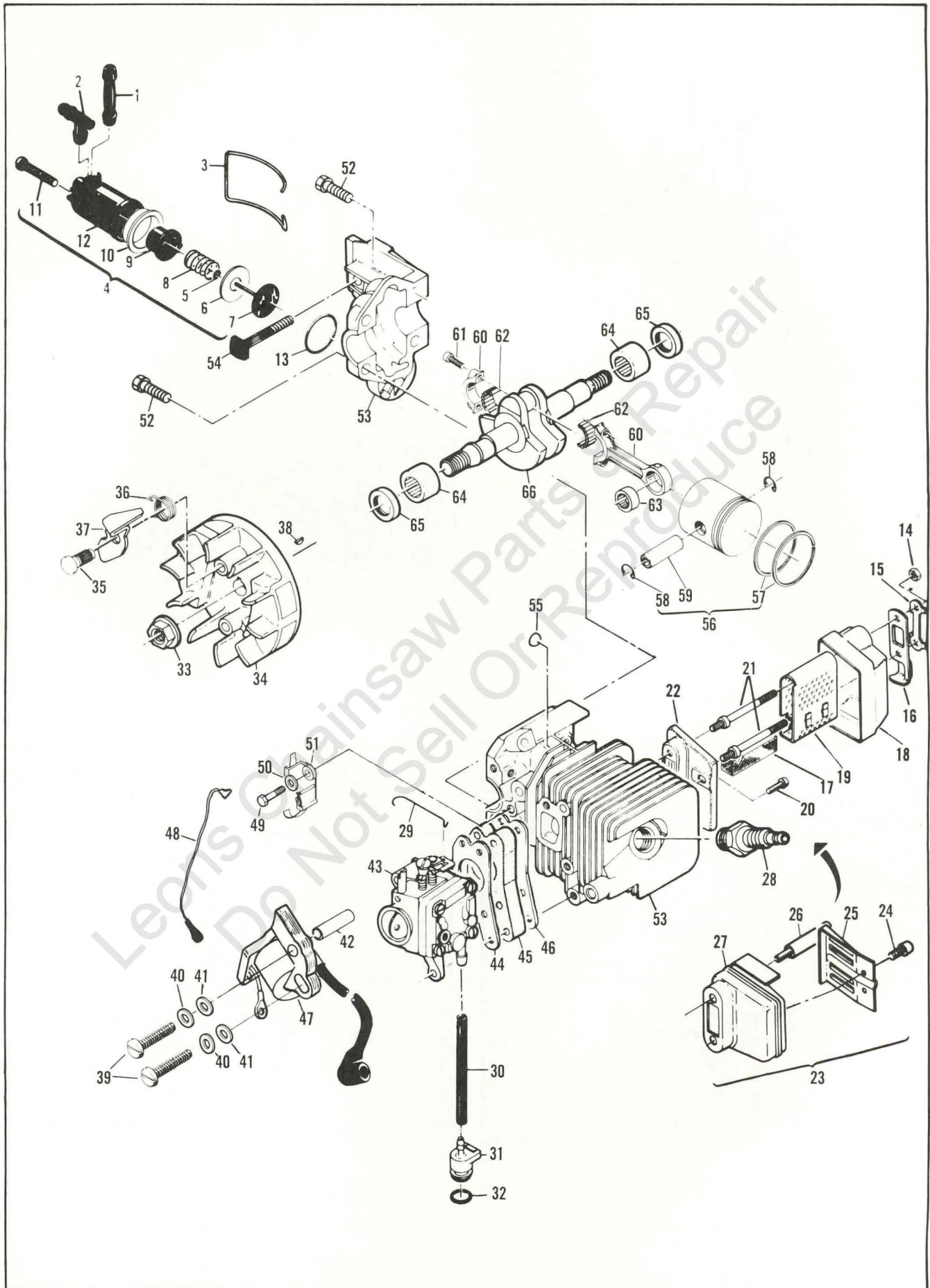


Figure 4. Powerhead Assembly.

Figure 4. Powerhead Assembly

ITEM NO.	PART NUMBER	DESCRIPTION	UNITS PER ASY.	ITEM NO.	PART NUMBER	DESCRIPTION	UNITS PER ASY.
1	217168	Connector - Outlet	1	33	110961	Nut - Hex 5/16-24	1
2	217167	Connector - Pump	1	34	94513	Flywheel/Pawl Assembly	1
3	83896	Bail - Mounting	1	35	68796	. Pin - Pawl	2
4	216563	Pump Assembly - Oiler	1	36	67814	. Spring - Pawl	2
5	--	①. "O" Ring	1	37	94493	. Pawl - Starter	2
6	--	①. Ring - Pump Piston	1	38	102164	Key - Woodruff	1
7	--	①. Piston Assembly - Pump	1	39	110586	Screw - Pan hd 8-32 x 1-3/4	3
8	83891	. Spring - Pump	1	40	105976	Washer - #8	3
9	--	①. Sleeve - Pump	1	41	67177	Washer - Insulating	3
10	--	①. Eyelet	1	42	68198	Tube - Insulating	3
11	110651	. Screw - Adjustment	1	43	--	Carburetor Assembly(Fig. 2,3)	1
12	--	①. Body Assembly - Pump	1	44	68197	Gasket - Carburetor	1
13	110653	"O" Ring	1	45	214349	Insulator - Carburetor	1
14	215871	② Nut - Muffler	2	46	90714	Gasket - Insulator	1
15	215471	② Plate - Lock	1	47	217031	Electronic Ignition Assembly	1
16	215472	② Deflector - Exhaust	1	48	217190	Wire Assembly - Stop Switch	1
17	216805	② Kit - Spark Arrester	1	49	213032	Screw - Hx hd 8-32 x 1/2	1
18	215774	② Cover	1	50	105976	Washer - #8	1
19	215776	② Baffle	1	51	217162	Connector - Stop Switch	1
20	213369	② Screw	1	52	120097	Screw - Hx hd M5 x 25	4
21	215757	② Bolt - Shoulder	2	53	214157	Cylinder/Crankcase Assembly	1
22	215773	② Base	1	54	83856	. Bolt - Bar Mounting	1
23	215411	③ Kit - Muffler	1	55	110914	. Plug - Cup	4
24	110681	③. Screw - Skt hd 10-24 x 1/4	2	56	94662	Piston Assembly	1
25	92961	③. Deflector - Exhaust	1	57	95143	. Set - Piston Rings	1
26	213327	③. Screw - Special	2	58	111026	. Ring - Snap	2
27	--	③. Body/Cover Assembly	1	59	92836	. Pin - Piston	1
28	214223	④ Spark Plug	1	60	94135	Connecting Rod Assembly	1
28	93018	⑤ Spark Plug	1	61	94654	. Screw - Connecting Rod	2
29	216039	Rod - Throttle	1	62	68095	. Roller - Needle(set of 20)	1
30	89059	Hose - Fuel	1	63	110984	. Bearing - Needle	1
31	90660	Adaptor - Fuel Hose	1	64	213282	Bearing - Crankshaft	2
32	110908	"O" Ring	1	65	83859	Seal - Crankshaft Oil	2
				66	217029	Crankshaft	1

① Contained in Oil Pump Repair Kit, P/N 216426.

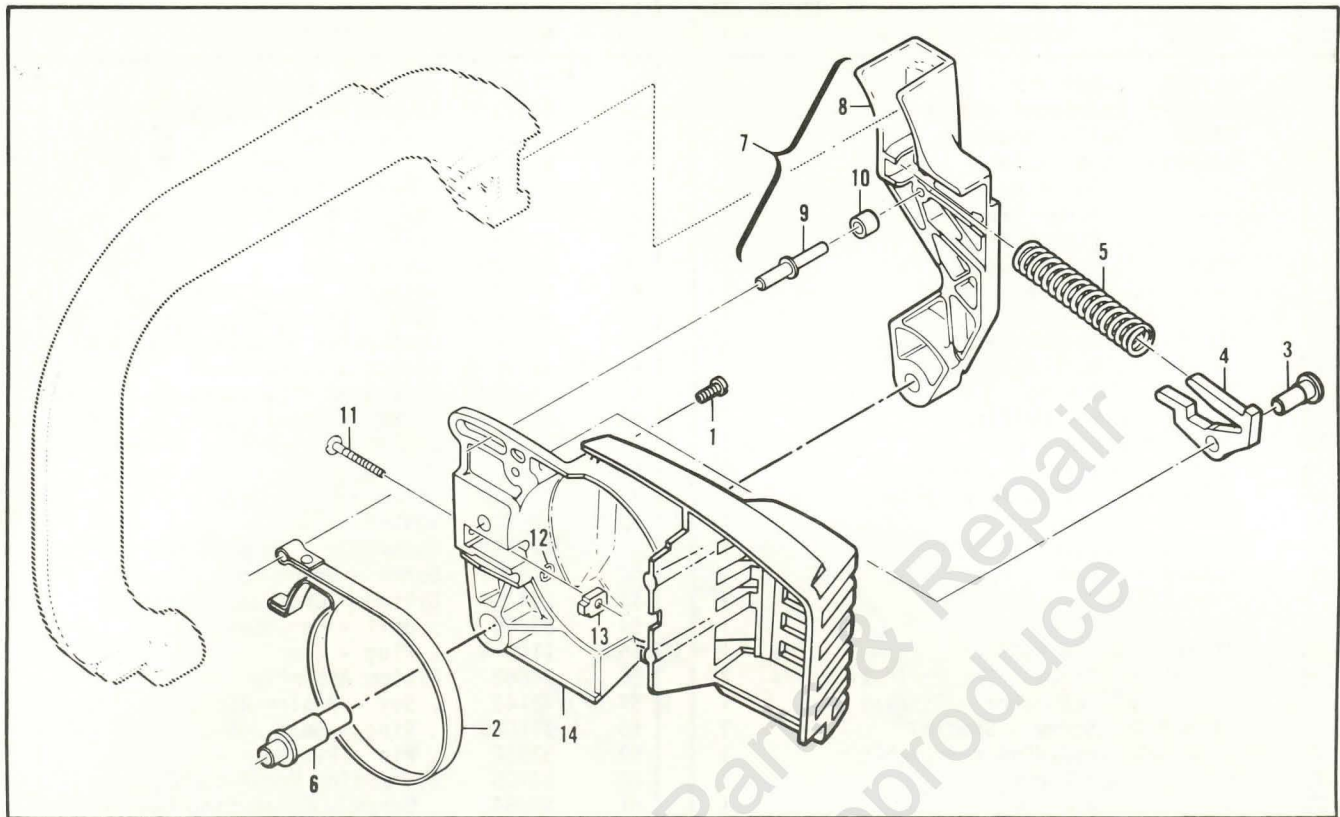
② Used on the following models: Mac 110, suffix letters A, N, O; Mac 120, suffix letters P, Q; and Mac 130, suffix letters F and L.

③ Used on the following models: Mac 110, suffix letters C, D, E; Mac 120, suffix letters B, K; and Mac 130, suffix letters G, M and T.

④ Used on the following models: Mac 110, suffix letters A, C; Mac 120, suffix letters B, P; and Mac 130, suffix letters F, G and T.

⑤ Used on the following models: mac 110, suffix letters D, E, N, O; Mac 120, suffix letters Q, K; and Mac 130, suffix letters L and M.

Figure 5. CHAIN BRAKE Assembly



ITEM NO.	PART NUMBER	DESCRIPTION	UNITS PER ASY.
	216551	①CHAIN BRAKE Assembly	
	216417	②CHAIN BRAKE Assembly	1
1	111047	. Screw - Pan hd 8-32 x 5/8	1
2	94709	. Band - Brake	1
3	215758	. Kit - Latch	1
4	-	. Spring - Compression	1
5	93602	. Pivot - Latch	1
6	216549	. Pivot - Lever	1
7	214375	. Lever Assembly - Actuating	1

ITEM NO.	PART NUMBER	DESCRIPTION	UNITS PER ASY.
8	92867	. . Lever	1
9	213907	. . Pin - Roller	1
10	214368	. . Bearing - Roller	1
11	90658	. Screw - Adjusting	1
12	110907	. Ring - Retaining	1
13	84929	. Nut - Bar Adjusting	1
14	216553	①. Housing - Brake	1
14	216414	②. Housing - Brake	1

① Used on the following models: Mac 110, suffix letters A, N, O; Mac 120, suffix letters P, Q; and Mac 130, suffix letters F and L.

② Used on the following models: Mac 110, suffix letters C, D, E; Mac 120, suffix letters B, K; and Mac 130, suffix letters G, M and T.

PART NUMBER	DESCRIPTION	PART NUMBER	DESCRIPTION
95169	①Kit - Spark Arrester	214211	Kit - Tool Maintenance
216805	②Kit - Spark Arrester	93900	Kit - Pressure Test
85687	Wrench - Screwdriver	215432	Tool - Pressure Test
88755	Scrench	501334	Tester - Ignition
93283	Case - Carrying, 12"	214194	Lubri-Gun
214201	. Bar Guard, 12"	85702	Lubricant - Custom, 6 oz can
93282	Case - Carrying, 14"	85703	Lubricant - Custom, 6 oz cans, 6-pack
92977	. Bar Guard, 14"	67537	Loctite
90256	Kit - Tune-up	69794	Locquic
214215	Guide - File	91485	Wrench - Socket
110083	R.T.V. Sealant	68915A	Kit - Piston Tool
93090	Guide - Timing		

① Contains round spark arrester screen, used on the following models: Mac 110, suffix letters C, D, E; Mac 120, suffix letters B, K; and Mac 130, suffix letters G, M and T.

② Contains square spark arrester screen, used on the following models: Mac 110, suffix letters A, N, O; Mac 120, suffix letters P, Q; and Mac 130, suffix letters F and L