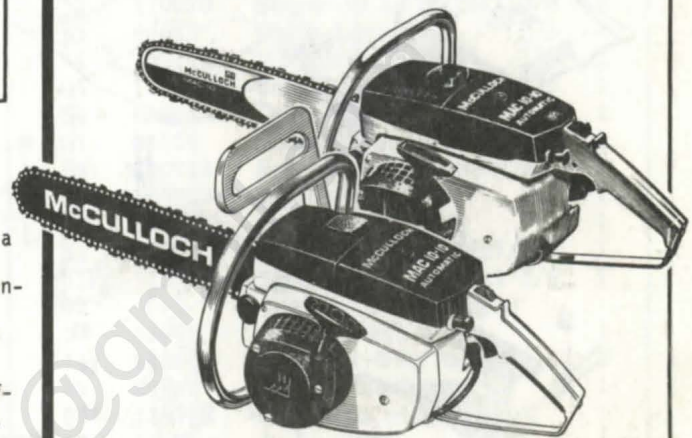


# ILLUSTRATED PARTS LIST

## MAC 10-10 MAC 10-10A Chain Saws

MODELS	SERIAL NUMBER PREFIX	MODELS	SERIAL NUMBER PREFIX
Manual		Automatic	
600001	10-	600002	10-
600001A	11-	600002B	11-, 13-, 14-
600001B	11-	600002D	11-, 13-, 14-, 15-
600001D	11-	600002E	15-
600001G	11-	600002F	14-
600001H	11-	600002G	15-
600001J	11-	600002H	15-
600001U	11-	600002J	11-, 13-, 14-
		600002U	11-, 13-, 14-



Mac 10-10 & 10-10A chain saws are identified by a model number (600001 or 600002) followed by a suffix letter (A, B, C, etc.) stamped on the identification plate attached to the saw. Suffix letters denote variations in parts or assemblies in the manufacture of the saw.

Part numbers listed in this IPL which have a suffix letter or letters following the description, indicate the part is used only on the model(s) identified by the letter or letters.

Part numbers and descriptions without suffix letter or letters apply to all models of the Mac 10-10 or 10-10A chain saw.

Part numbers which have one or more dot(s) preceding their description may be ordered individually but they are also included in the kit or assembly whose description begins directly above the dot(s).

Part numbers which have changed since the previous printing of the IPL covering these saws, are indicated by a dash (-) preceding the new part number.

The policy of McCulloch Corporation is one of continual improvement in design, manufacturing and engineering advancement where possible to assure still finer two-cycle power tools. Hence, specifications, equipment, colors, design, and manufacturer's suggested list prices are subject to change without notice and McCulloch Corporation reserves the right to make such changes without prior notification or obligation to backfit or supply backfit components for units previously shipped from the factory.

May 1977

- CONTENTS -

	<u>Page</u>
Figure 1. General . . . . .	2
Figure 2. Clutch Guard Assembly . . . . .	4
Figure 3. CHAIN BRAKE Assembly . . . . .	4
Figure 4. Fan Housing & Starter Asys . . . . .	6
Figure 5. Carburetor Assembly . . . . .	6
Figure 6. Fuel Tank Assembly . . . . .	8
Figure 7. Powerhead Assembly . . . . .	10
Accessories . . . . .	9
Service Specifications . . . . .	9



# MAC 10-10 MAC 10-10A

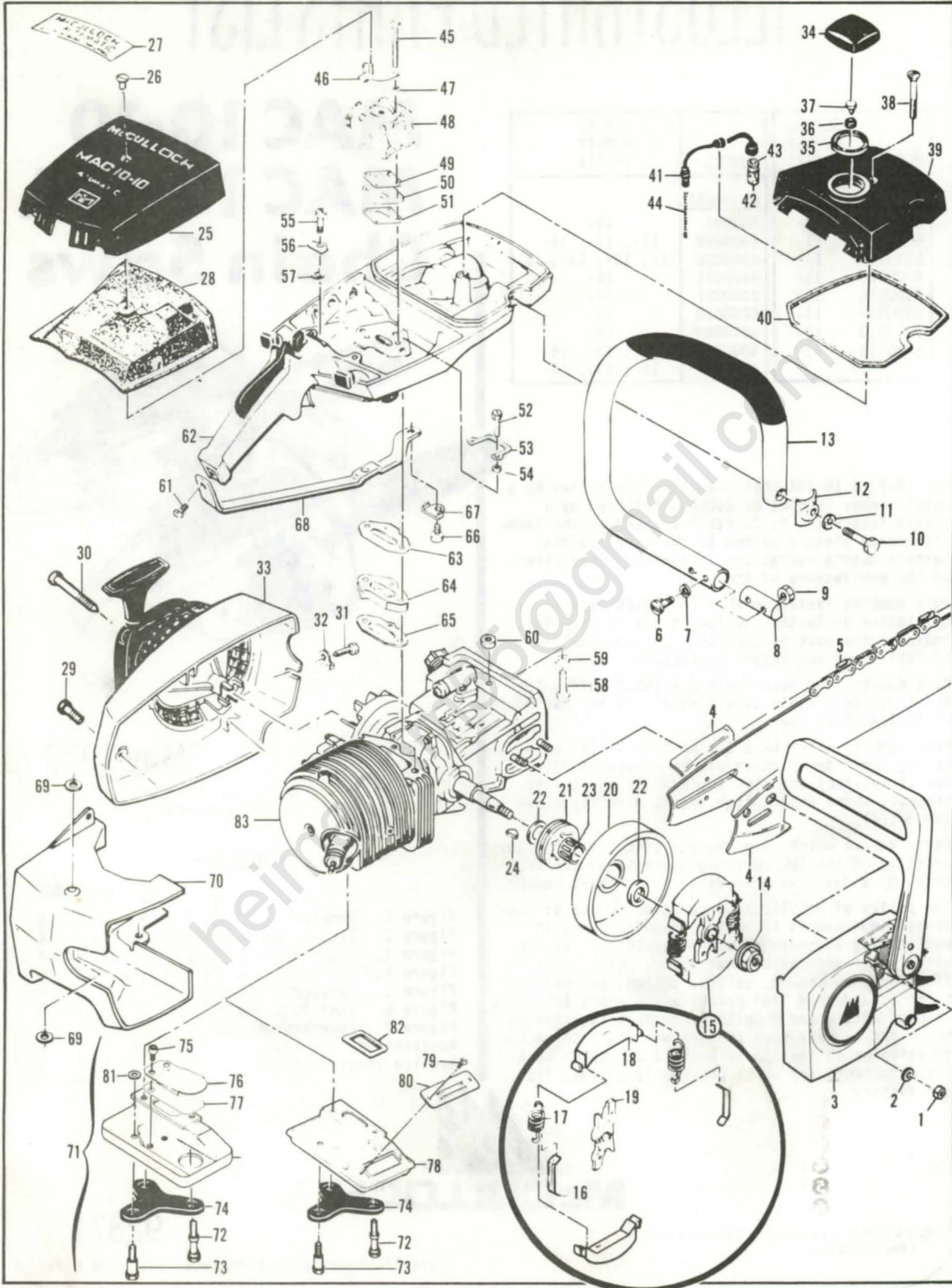


Figure 1. General



# MAC 10-10 MAC 10-10A

Figure 1. General

Item No.	Part Number	Description	Units Per Asy.	Item No.	Part Number	Description	Units Per Asy.
1	-110961	Nut-Hx 5/16-24	2	41	64848	Hose Asy-Fuel	1
2	100440	① Washer-5/16	2	42	63932	. Filter-Fuel	1
3		Clutch Guard Asy (Fig 2)		43	100440	. Washer	1
(3)		CHAIN BRAKE ASY (Fig 3)		44	67944	Spring-Hose	1
4	-64330	② Set-Bar Plates	1	45	103357	Screw-Hx hd 10-24x2-1/4	2
5		Bar & Chain (Accessories)		46	68807	Bracket Asy	1
6	110865	Screw-Hx hd 10-24x7/8	2	47	24236	Washer-Special	2
7	100352	Washer-#10	2	48		Carburetor Asy (Fig 5)	
8	-89727	Retainer-Frame	1	49	86189	Gasket-Carburetor	1
9	101326	③ Nut-Hx 10-24	2	50	84078	Spacer-Carburetor	1
10	102130	Screw-Hx hd 1/4-20x1-1/2	1	51	84081	Gasket-Spacer	1
11	100153	Washer-Lock 1/4	1	52	110570	Screw-Hx hd 12-24x1-3/8	2
12	63484	Clamp-Frame	1	53	68582	Plate-Lock	1
13	-87686A	Frame & Grip Asy	1	54	102115	Washer-#12	2
14	110703	③ Nut-Hx 3/8-24 R.H.	1	55	110568	Screw-Hx hd 12-24x1-1/8	1
(14)	86113	④ Nut-Hx 3/8-24 L.H.	1	56	69516	Plate-Lock	1
15	87675	Clutch Asy	1	57	64856	Washer-Special	1
16	64583	. Retainer-Spring	2	58	110713	Screw-Skt hd 10-24x7/8	1
17	83223	. Spring-Clutch	2	59	100003	Washer-#10	1
18	67233	. Shoe-Clutch	2	60	69772	Spacer-Fuel tank	1
19	-89438	. Rotor Asy	1	61	106078	① Screw-Pn hd 10-24x7/16	1
20	65370	⑤ Drum/Spkt Asy-7T .354P	1	(61)	-110910	② Screw-Hx hd 10-24x1-3/8	1
21		⑤ . Sprocket- Fixed rim	1	62		Fuel Tank Asy (Fig 6)	
22	61692	⑤ . Washer-Shim	2	63	84082	Gasket-Fuel tank	1
(20)	-86946	⑥ Drum/Spkt Asy-7T .375P	1	64	84079	Insulator-Fuel tank	1
(21)	-86951	⑥ . Sprocket-7T .375P	1	65	84082	Gasket-Insulator	1
(22)	-86958	⑥ . Washer-Shim	1	66	110566	Screw-Hx hd 12-24x5/8	1
23	-110971	Bearing-Sprocket	1	67	68508	Plate-Lock	1
24	-100106	③ Key-Woodruff	1	68	85007	Brace-Handle	1
25	69033	Cover Asy-Air cleaner	1	69	68581	⑤ Insulator-Shroud	2
26	65813	. Nut-Cover	1	70	-85731A	Shroud	1
27	68177	⑤ Plate-Instruction	1	71	68863	Kit-Muffler (B,J)	1
28	-89458	⑤ Filter-Air	1	72	67838	. Screw-Muffler long	2
(28)	-86397	⑥ Filter-Air	1	73	67837	. Screw-Muffler short	1
29	110741	Screw-Pan hd 10-24x1/2	1	74	83993	. Plate-Lock	1
30	-87871	Screw-Fan housing	3	75	110563	. Scr :w-Skt hd 8-32 x 1/4 (B,J)	1
31	102762	① Screw-Hx hd 10-24x1/2	1	76	84780	. Stop-Reed (B,J)	1
(31)	-110741	② Screw-Pn hd 10-24x1/2	1	77	84779	. Reed (B,J)	1
32	69890	① Plate-Lock	1	78	-89428A	Muffler Asy(A,D,E,F,G,H,U)	1
33		Fan housing & Starter Asys (Fig 4)		79	-110662	⑥ . Screw-Pan hd 6-32x3/8 (A,D,E,F,G,H,U)	2
34	-89322	Cap Asy-Fuel	1	80	-89432A	⑥ . Cover-Screen (A,D,E,F,G,H,U)	1
35	69767	. Gasket	1	81	63993	⑤ Gasket-Muffler screw	1
36	86453	① Plug	1	82	84007	Gasket-Muffler	1
37	53766A	① Valve	1	83		Powerhead Asy (Fig 7)	
38	110334	Screw-Oval hd 12-24x1-3/4	1				
39	69684	Cover-Fuel tank	1				
40	69345	Gasket-Cover	1				

- ① Used on models with serial number prefix 10-, 11-, 13-, 14-.
- ② Used on models with serial number prefix 15-.
- ③ Used on models with serial number prefix 10-.
- ④ Used on models with serial number prefix 11-, 13-, 14-, 15-.
- ⑤ Used on models with serial number prefix 10-, 11-, 13-.
- ⑥ Used on models with serial number prefix 14-, 15-.

**MAC 10-10**  
**MAC 10-10A**

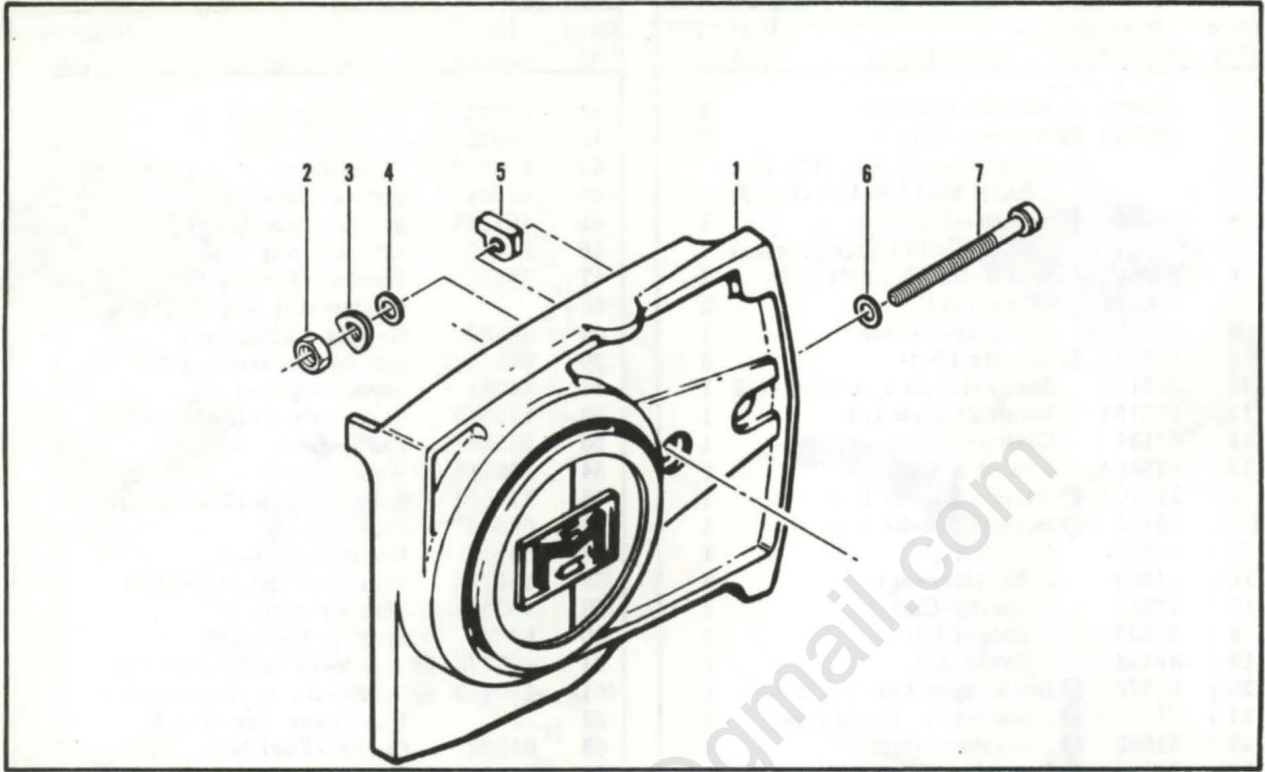


Figure 2. Clutch Guard Assembly

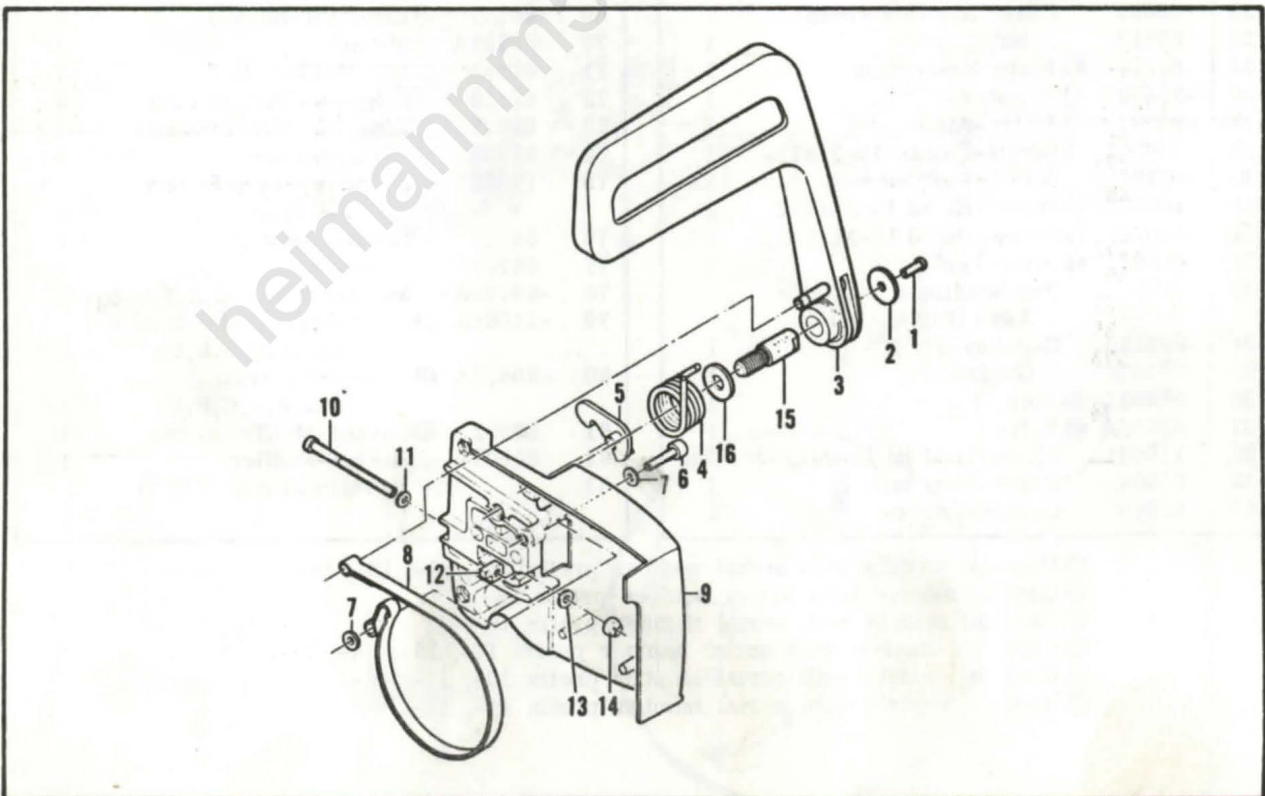


Figure 3. CHAIN BRAKE Assembly



Figure 2. Clutch Guard Assembly

Item No.	Part Number	Description	Units Per Asy.
1	84530	① Clutch Guard Asy	1
2	102067	. Nut-Hx 10-24	1
3	110387	. Washer-Wavey	1
4	100002	. Washer-#10	1

Item No.	Part Number	Description	Units Per Asy.
5	61705	. Nut-Bar adjustment	1
6	110264	. Washer-#10	1
7	102144	. Screw-Bar adjustment	1

① Used on models with serial number prefix 10-,11-,13-.

Figure 3. CHAIN BRAKE Assembly

Item No.	Part Number	Description	Units Per Asy.
1	-91278	① CHAIN BRAKE Assembly	1
	-102500	. Screw - Pan hd 10-24 x 1/2	1
2	-91273	. Washer - Special	1
3	-91251A	. Lever Assembly	1
4	-91239	. Spring	1
5	-91235A	. Latch Assembly	1
6	-105738	. Screw - Skt hd 1/4-20 x 7/8	1
7	-91274	. Washer - Special	2

Item No.	Part Number	Description	Units Per Asy.
8	-91238A	. Band	1
9	-91249	. Housing Assembly	1
10	-110527	. . Screw - Fil hd 10-24 x 2-3/4	1
11	110264	. . Washer - #10	1
12	61705	. . Nut - Bar adjusting	1
13	100002	. . Washer - #10	1
14	-102067	. . Nut - Hx 10-24	1
15	-91246	. . Pin - Lever pivot	1
16	-91245	. . Washer - Thrust	1

① Used on models with serial number prefix 14-, 15-.

**MAC 10-10  
MAC 10-10A**

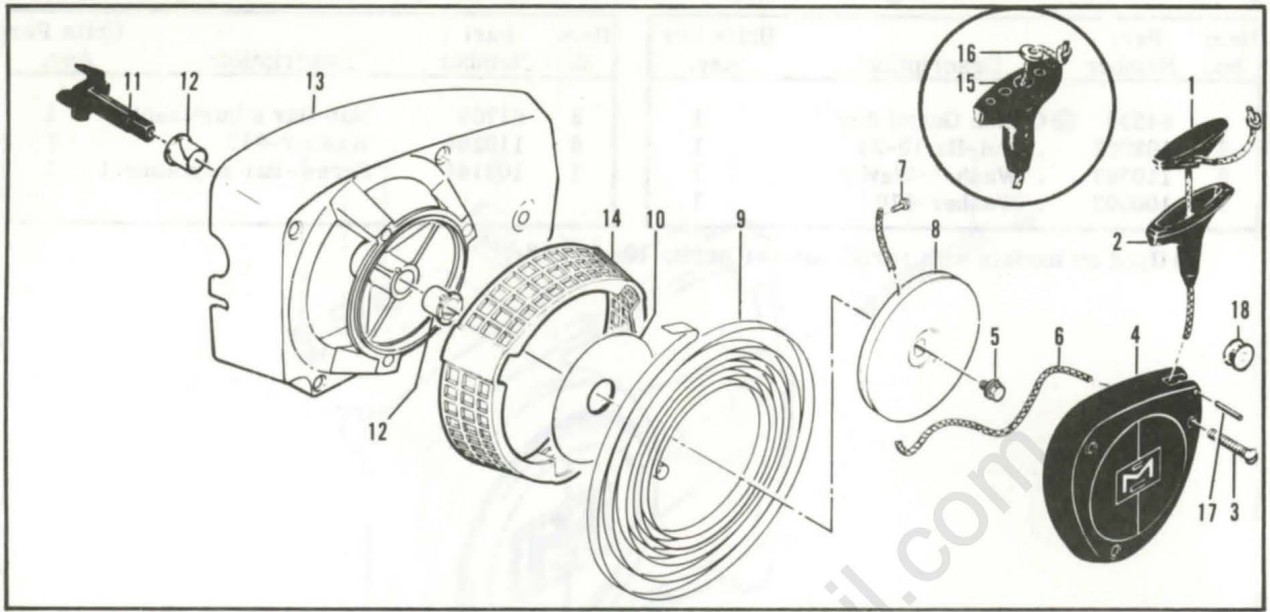


Figure 4. Fan Housing & Starter Asys

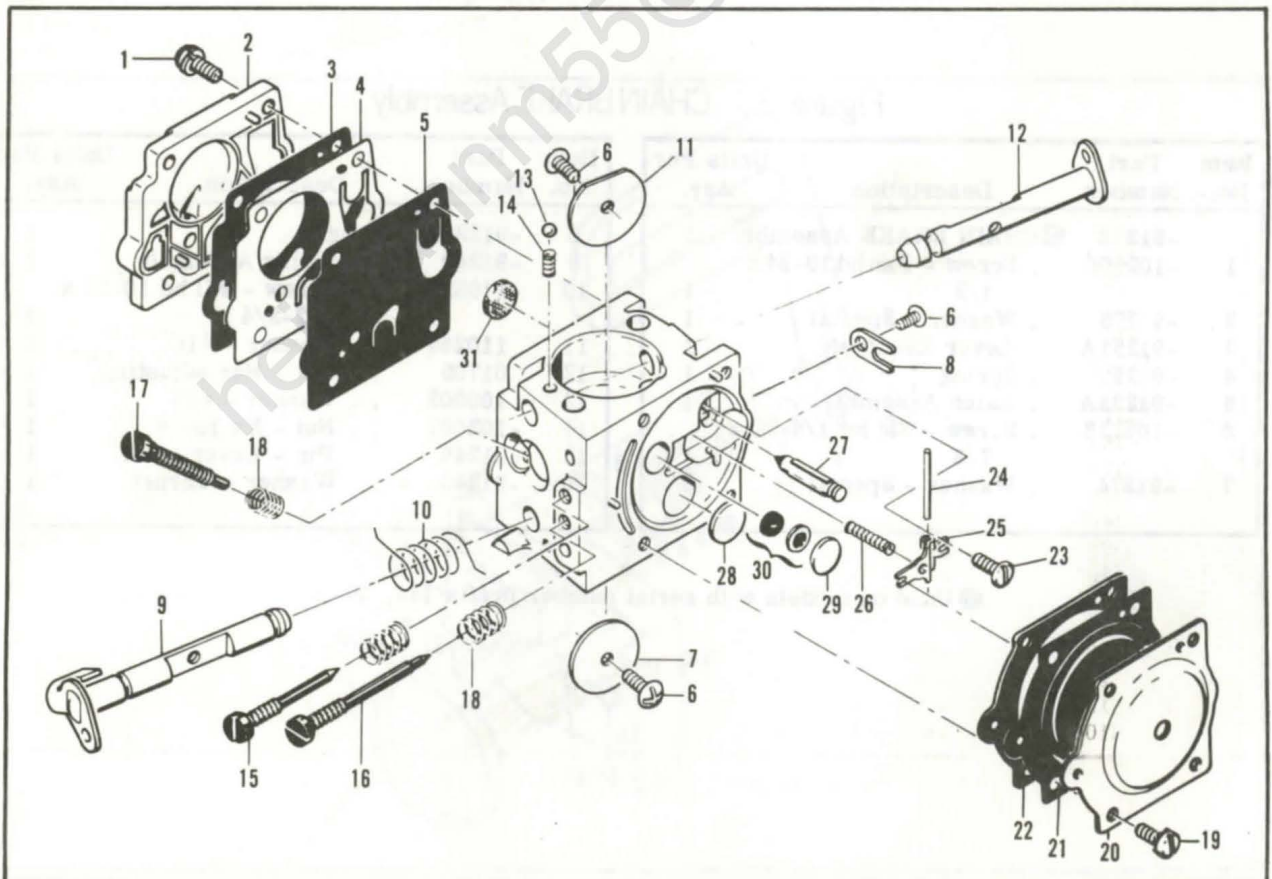


Figure 5. Carburetor Assembly



Figure 4. Fan Housing & Starter Assemblies

Item No.	Part Number	Description	Units Per Assy.	Item No.	Part Number	Description	Units Per Assy.
	-87667	Fan Housing & Starter Assy	1	9	87680	. Spring-Rewind	1
1	62191A ①	. Insert-Handle	1	10	86053	. Shield-Spring	1
2	-93137 ①	. Handle-Starter	1	11	83748	. Shaft-Starter	1
3	110646	. Screw-Oval hd 8-32 x 1-1/8	3	12	57535	. Bushing-Starter	2
4	87672	. Cover-Starter	1	13	87693	. Kit-Fan Housing	1
5	110341	. Screw-Hx hd 10-24x1/2	1	14	87674	. . Guard-Sawdust	1
6	-68162	. Rope-Starter	1	15	-91255 ②	Kit-Starter Handle	1
7	110470	. Rivet-Rope	1	16	105490 ②	. Washer	1
8	85122	. Drum-Starter	1	17	110657 ③	Pin-Roll	1
				18	84051 ③	Pulley-Rope	1

- ① Used on models with serial number prefix 10-, 13-, and 15-; also 11- with suffix letters A, B, D, J and U.  
 ② Used on models with serial number prefix 14-; also 11- with suffix letters G and H.  
 ③ Used on models with serial number prefix 10-.

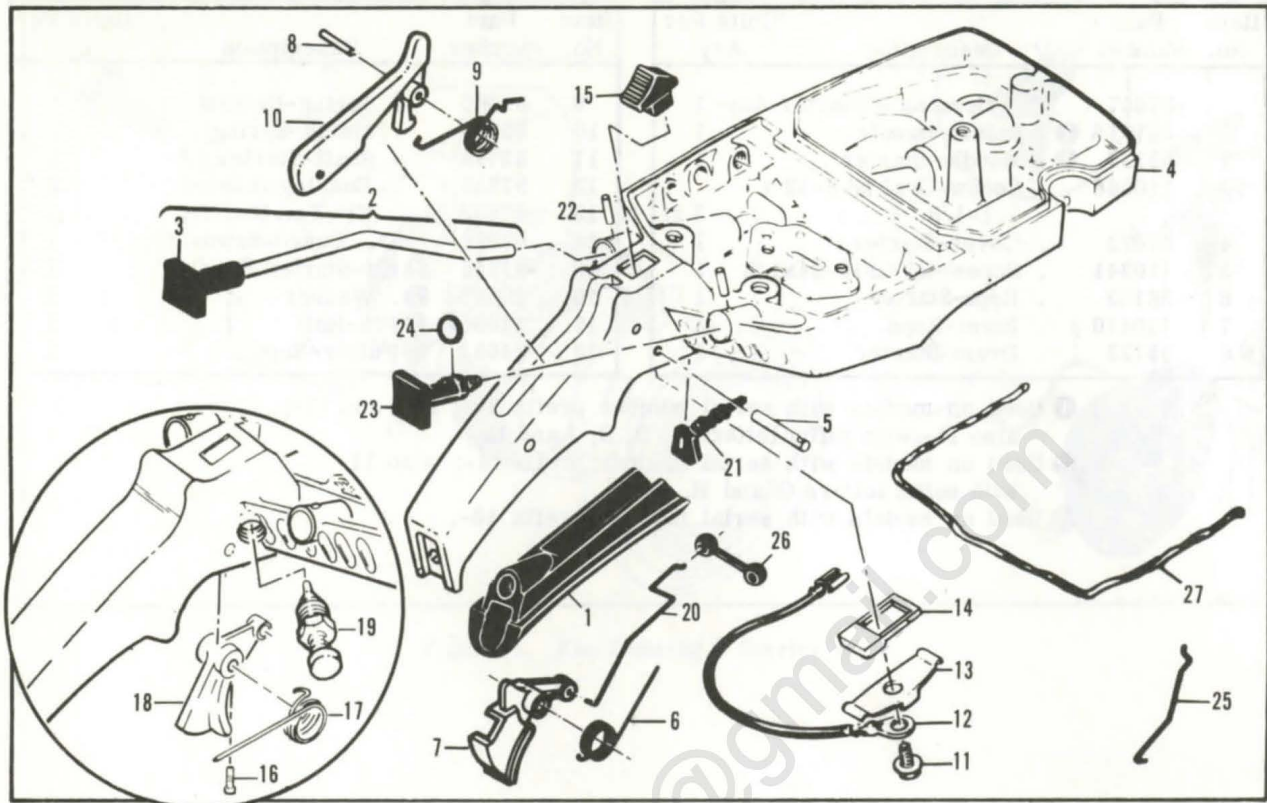
Figure 5. Carburetor Assembly

Item No.	Part Number	Description	Units Per Assy	Item No.	Part Number	Description	Units Per Assy
	85720	Carburetor Assy	1	18	*67502	. Spring - Needle	3
1	67501	. Screw - Pump cover	4	19	70798	. Screw - Diaphragm cover	4
2	83760	. Cover - Pump	1	20	83761	. Cover - Diaphragm	1
3	*67495	. Gasket - Cover	1	21	*67499	. Diaphragm - Metering	1
4	*67498	. Diaphragm - Check valve	1	22	*67496	. Gasket - Diaphragm	1
5	*83114	. Diaphragm - Fuel pump	1	23	*67500	. Screw - Lever pin	1
6	*47690	. Screw - Plate	3	24	*67508	. Pin - Lever	1
7	83762	. Plate - Throttle	1	25	*67509	. Lever - Metering	1
8	67489	. Clip - Shaft	1	26	*67503	. Spring - Lever	1
9	67486	. Shaft Assy - Throttle	1	27	*67491	. Valve - Needle	1
10	*85981	. Spring - Throttle shaft	1	28	*71690	. Plug - 3/8	1
11	67490	. Plate - Choke	1	29	*69506	. Plug - 5/16	1
12	67488	. Shaft Assy - Choke	1	30	83758	. Kit - Valve & Seat Assy	1
13	*100302	. Ball - Choke friction	1	31	*67507	. Screen - Fuel	1
14	*67504	. Spring - Choke friction	1		*67482	Gasket Set	
15	*68104	. Needle - High speed	1		83764	Repair Kit	
16	*68105	. Needle - Idle	1				
17	68106	. Screw - Idle speed	1				

\*Indicates parts included in Repair Kit, P/N 83764

# MAC 10-10 MAC 10-10A

Figure 6. Fuel Tank Assembly



Item No.	Part Number	Description	Units Per Asy.
1	-89320	Insert-Handle grip	1
2	64871	Button & Rod Assembly	1
3	63044	. Button-Oiler	1
4	-84183A	Kit-Fuel tank/control	1
5	110378	. Pin-Roll 3/16 x 15/16	1
6	-92152	① . Spring-Trigger	1
7	-92151A	① . Trigger-Throttle	1
8	-105654	① . Pin-Roll 1/8 x 7/8	1
9	-92154	① . Spring-Trigger release	1
10	-92153A	① . Release-Trigger	1
11	110706	. Screw-Fil hd 8-18 x 1/2	1
12	62973A	. Wire Asy-Stop switch	1
13	62451	. Control-Switch	1
14	62950A	. Base-Switch	1

Item No.	Part Number	Description	Units Per Asy.
15	68846	. Button-Switch	1
16	110668	② Screw-Fil hd 8-36 x 5/8	1
17	87178	② Spring-Throttle return	1
18	88796	② Trigger	1
19*	85451	② Latch Assembly-Throttle	1
20	85107	Rod-Throttle	1
21	-68522A	Seal-Throttle rod	1
22	105673	Pin-Roll 3/32 x 9/16	2
23	69041	Button-Choke	1
24	105614	"O" Ring	1
25	69042	Rod-Choke	1
26	69043	Snubber-Rod	1
27	69564	③ Seal-Airbox	1

\*Not used on models with serial number prefix 11- and suffix letters G and H.

① Used on models with serial number prefix 15-.

② Used on models with serial number prefix 10-, 11-, 13-, 14-.

③ Furnished on a 12-1/2 inch strip containing 9 beads (enough for 9 replacements).



# MAC 10-10 MAC 10-10A

## Accessories

Item No.	Part Number	Description	Units Per Asy.	Item No.	Part Number	Description	Units Per Asy.
63541	①	Bar-16" Mac 10		- 86330		Kit-Spike	
62556N	②	Chain Asy-16" PM 358		- 102388		. Screw-Hx hd 10-24 x 5/8	
- 86780N	③	Chain Asy-16" PM 378		- 101191		. Nut-Hx 10-24	
- 87143N	③	Chain Asy-16" SM 378		- 90258		Kit-Tune Up	
- 89909N	④	Chain Asy-16" SPR 378G		86419		Guide-Timing	
- 89502	④	Bar-16" Mac 10		69191		Kit-Pressure Test Adapter	
- 89521N	④	Chain Asy-16" PM 350		- 91226		Wrench-Flywheel	
- 91090A	⑤	Bar-16" Sprocket Nose		63746		Wrench/Screwdriver	
- 87301N	⑤	Chain Asy-16" SM 370		68863		Kit-Pancake Reed Muffler (A,D,E,F,G,H,U)	
- 88167N	⑤	Chain Asy-16" PM 370G		- 89431		Kit-Spark Arrester Screen (A,D,E,F,G,H,U)	
69210		Piston Asy-.020 in. oversize		- 85933		Kit-Spark Arrester Screen (B,J)	
62813		. Ring Set-Piston .020 in. oversize		63097		Spark Plug (Standard)	
69211		Piston Asy-.030 in. oversize		63432		Spark Plug (Cooler)	
62812		. Ring Set-Piston .030 in. oversize		- 92896		Guard-Bar 16"	
84453		Kit-Piston Tool		- 93284		Case-Carrying	

- ① Used on models with serial number prefix 10-, 11-, 14-.
- ② Used on models with serial number prefix 10-, 11-.
- ③ Used on models with serial number prefix 14-.
- ④ Used on models with serial number prefix 13-.
- ⑤ Used on models with serial number prefix 15-.

## Service Specifications

SPARK PLUG GAP	.025 inch (.63 mm)
LAMINATION GAP	.010 to .012 inch (.25 to 30 mm)
BREAKER POINT GAP	.019 to .020 inch (.48 to .51 mm)
TIMING	26° BTDC
CLUTCH ENGAGEMENT SPEED	2800 to 3000 RPM
TORQUES	Connecting Rod Screws: 65 to 70 pound x inches (8.5 to 9.2 N.m)
	Clutch Nut: 160 to 170 pound x inches (18 to 19 N.m)
	Flywheel Nut: 265 to 325 pound x inches (30 to 37 N.m)

# MAC 10-10 MAC 10-10A

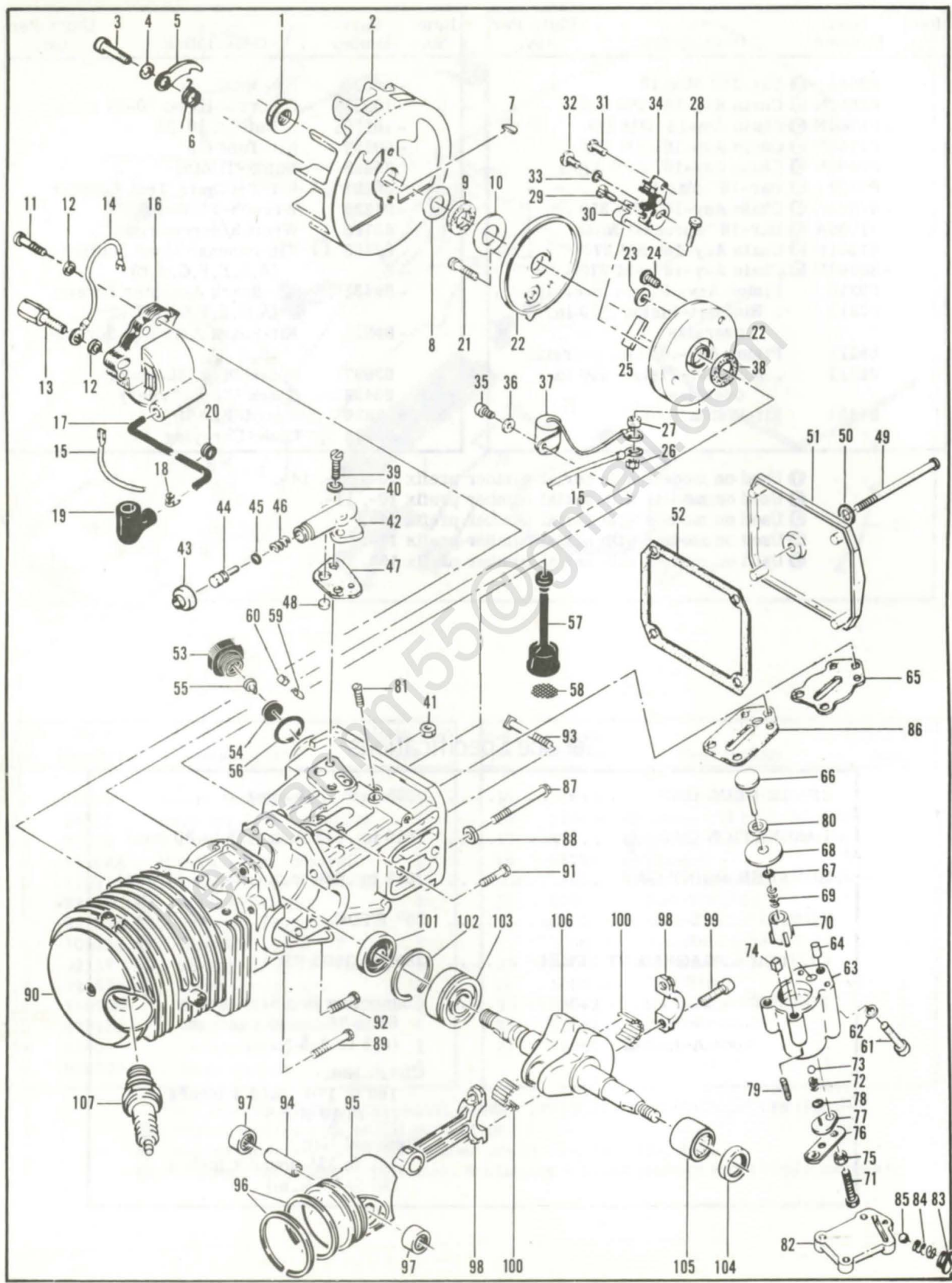


Figure 7. Powerhead Assembly



Figure 7. Powerhead Assembly

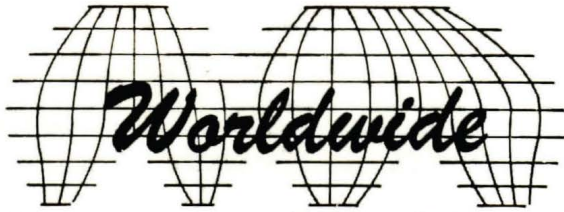
Item No.	Part Number	Description	Units Per Asy.
1	110703	Nut-Hx 3/8-24	1
2	86068	Flywheel	1
3	-88804	Screw-Pawl pivot	2
4	83241	Washer-Special	2
5	67546	Pawl-Starter	2
6	67545	Spring-Pawl	2
7	-100166	Key-Woodruff	1
8	67057	Washer-Thrust	1
9	67056	Seal-Breaker box cover	1
10	67054	Washer-Thrust	1
11	110127	Screw-Hx hd 10-24x7/8	1
12	100002	Washer-#10	2
13	83512	Stud-Special	1
14	84686	Wire Asy-Ground	1
15	69344	Wire Asy-Primary	1
16	-87246A	Coil & Lamination Asy	1
17	50120	. Wire Asy-Spark plug	1
18	55061	. . Connector	1
19	-85758	. . Boot	1
20	-100268	. Grommet	1
21	110584	Screw-Pan hd 8-32x3/4	1
22	-91852	Kit-Breaker Box & Cover	1
23	-91838	. Washer	1
24	-110489	. Screw-Panhd 6-32x7/16	1
25	54184	Wiper-Cam	1
26	100298	Nut-Hx 6-32	1
27	62365	Spacer-Breaker	1
28	110346	Screw-Hx hd 6-32x3/4	1
29	110706	Screw-Pan hd 8-18x1/2	1
30	83126	Strap-Conduction	1
31	110811	Screw-Pan hd 8-32x3/8	1
32	-110969	Screw-Hx hd 8-32x1/2	1
33	105976	Washer-#8	1
34	-88808	Breaker Asy	1
35	-110338	Screw-Fil hd 8-32x1/2	1
36	100080	Washer-#8	1
37	85358	Condenser	1
38	67051	Seal-Breaker box	1
39	-110338	Screw-Fil hd 8-32x1/2	2
40	-110613	Washer-#8	2
41	100955	Nut-Hx 8-32	1
42	84156	Housing-Pump	1
43	62262	Cap-Housing	1
44	62266	Plunger-Pump	1
45	105614	"O" Ring	1
46	66687	Spring-Pump	1
47	-91669	① Gasket-Pump	1
(47)	62230	② Gasket-Pump	1
48	-91668	① Valve-Pump	1
(48)	62909	② Valve-Pump	1
49	110291	Screw-Pan hd 10-24x2-5/8	1
50	110921	Washer-Sealing	1
51	86304	Cover-Oil tank	1
52	86306	Gasket-Cover	1
53	87270	Cap-Oil tank	1
54	87269	Retainer-Valve	1
55	86402	Valve-Check	1

Item No.	Part Number	Description	Units Per Asy.
56	101148	"O" Ring	1
57	-91672	① Hose Asy-Oil	1
(57)	62123B	② Hose Asy-Oil	1
58	51506	. Screen-Hose	1
59	110737	③ Clip-Oil cap plug	1
60	84953	③ Plug-Oil cap	1
61*	-110865	Screw-Hx hd 10-24x7/8	1
62*	-100003	Washer-#10	1
63*	-89115B	Pump Asy-Pulse	1
64*	-91774	. Sleeve	1
65*	-92818	. Seal-Pulse pump	1
66*	-60260B	. Piston Asy-Pump	1
67*	-105603	. "O" Ring	1
68*	86182	. Ring-Piston	1
69*	60259	. Spring-Piston	1
70*	62227	. Sleeve-Adjustment	1
71*	110386	. Screw-Hx hd 8-32 x 1	1
72*	-92844	. Spring-Outlet valve	1
73*	102809	. Ball	1
74*	-91259	. Pad-Pump	1
75*	100251	④ Nut-Hx 8-32	1
76*	89114	⑤ Clamp-Pump	1
77*	62407	④ Cover-Outlet valve	1
78*	106104	④ "O" Ring	1
79*	110643	② Screw-Set	1
80*	60937	② Washer-Teflon	1
81**	110333	Screw-Oval hd 8-32x1/2	3
82**	68711	Body Asy-Check valve	1
83**	68714	. Screw-Special	1
84**	63034	. Spring-Check valve	1
85**	100071	. Ball	1
86**	62274	Gasket-Pump	1
87	62105	Screw Asy-Sealing	4
88	62842	. Washer-Sealing	4
89	110288	Screw-Hx hd 8-32x3/4	1
90*	-84113A	Cyl/C' Case Asy	1
(90)**	69993	Cyl/C' Case Asy	1
91	110288	. Screw-Hx hd 8-32x3/4	2
92	110618	. Screw-Hx hd 8-32x1-3/8	1
93	62065	. Bolt-Bar mounting	2
94	61649	Pin-Piston	1
95	69212	Piston Asy	1
96	62814	. Ring Set-Piston	1
97	103085	. Bearing-Needle	2
98	65401	Connecting Rod Asy	1
99	61627A	. Screw-Skt hd Special	2
100	63225	. Roller-Needle (Set of 20)	1
101	67906	Seal-Oil	1
102	63464	Ring-Snap	1
103	67905	Bearing-Ball	1
104	110260	Seal-Oil	1
105	104357	Bearing-Needle	1
106	-87699	Crankshaft	1
107	63097	Spark Plug (not A or E)	1
(107)	65408	Spark Plug (A)	1
(107)	-93018	Spark Plug (E)	1

\* Used on model 600002.  
 \*\* Used on model 600001.  
 ① Used on models with serial number prefix 14-, 15-.  
 ② Used on models with serial number prefix 10-, 11-, 13-.

③ Used on models with serial number prefix 10-.  
 ④ Used on models with serial number prefix 10-, 11-, 13-, 14-.  
 ⑤ Used on models with serial number prefix 14-.

 **McCULLOCH**



● MANUFACTURING ● SALES ● SERVICE ●

**McCULLOCH CORPORATION**

P.O. BOX 92180, LOS ANGELES, CALIFORNIA 90009

**INTERNATIONAL DIVISIONS:**

LOS ANGELES, CALIFORNIA, P.O. BOX 92181  
SINGAPORE, GOLDHILL PLAZA, SINGAPORE II

**McCULLOCH OF CANADA LTD.**

6338 VISCOUNT ROAD, MALTON, ONTARIO L4V 1H4, CANADA

**McCULLOCH OF EUROPE, N. V.**

GEERDEGEM SCHONENBERG, 299 2800 MECHELEN, BELGIUM

**McCULLOCH OF AUSTRALIA PTY., LTD.**

P.O. BOX 223, SEVEN HILLS, N.S.W. 2147, AUSTRALIA

heimannm5@gmail.com