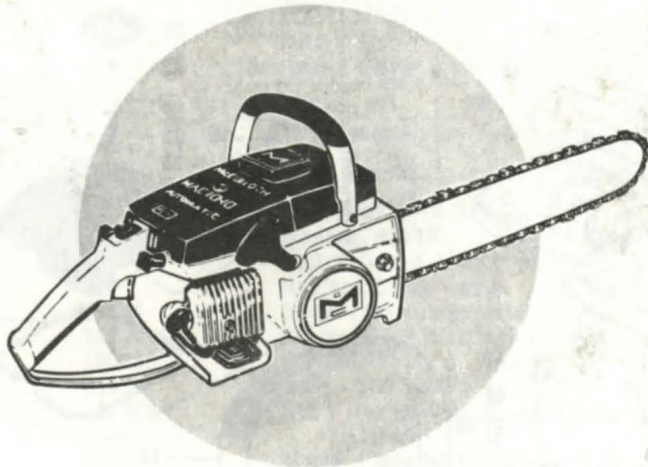


MASTER ILLUSTRATED PARTS LIST



MAC 10-10 MAC 10-10A Chain Saws

JUNE 1970

CONTENTS

The policy of McCulloch Corporation is one of continual improvement in design, manufacturing and engineering advancement wherever possible to assure still finer two-cycle power tools. Hence, specifications, equipment, colors, design and manufacturer's suggested list prices are subject to change without notice and McCulloch Corporation reserves the right to make such changes without prior notification or obligation to backfit or supply backfit components for units previously shipped from the factory.

	Page
Figure 1. General	2
Figure 2. Clutch Guard Assembly	6
Figure 3. Fuel Tank Assembly	6
Figure 4. Carburetor Assembly	8
Figure 5. Powerhead Assembly	10

This Master Illustrated Parts List gives the name, number and interchangeability between engines, of service and replacement parts which were used on or are presently available for all MAC 10-10 and MAC 10-10A chain saws manufactured to date.

Information about the List and how to use it will be found on the back cover.
Read the information before you start to use the List.

 **McCULLOCH**

**MAC 10-10
MAC 10-10A**

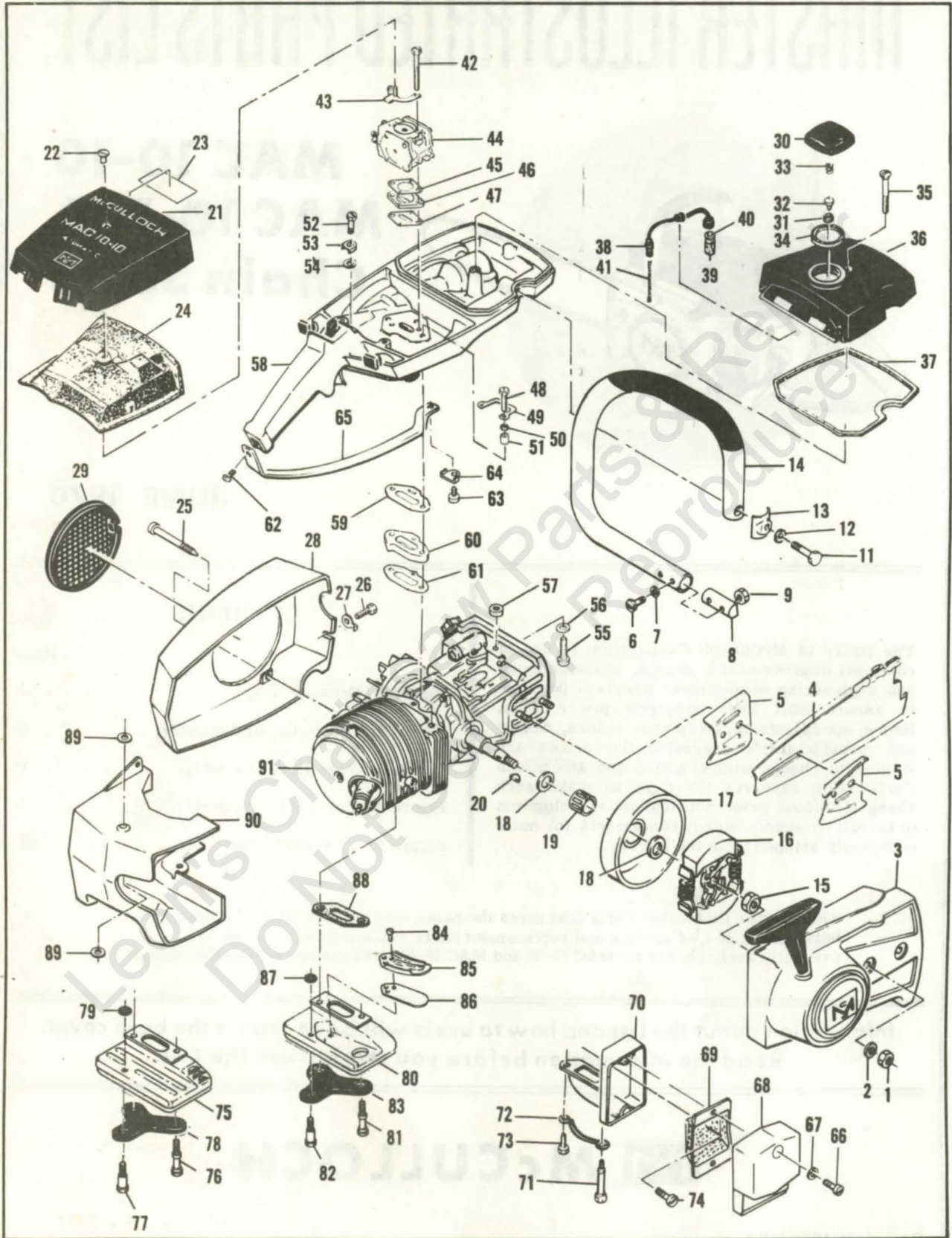


Figure 1. General

Figure 1. General

Item No.	Part Number	Description	Units Per Assy	Usable on Code																												
MAC 10 & MAC 10A - Usable on Code																																
		<table border="1" style="width: 100%; border-collapse: collapse;"> <thead> <tr> <th>Model Name</th> <th>10-10</th> <th>10-10A</th> <th>10-10</th> <th>10-10A</th> <th>10-10</th> <th>10-10A</th> </tr> </thead> <tbody> <tr> <td>Model Numbers</td> <td>600005 600006</td> <td>600007 600011</td> <td>600005 600006</td> <td>600007 600011</td> <td>600005</td> <td>600004</td> </tr> <tr> <td>Letter</td> <td>A</td> <td>B</td> <td>C</td> <td>D</td> <td>E</td> <td>F</td> </tr> <tr> <td>Serial Numbers</td> <td>Prefixed 10-</td> <td>Prefixed 10-</td> <td>Prefixed 12-</td> <td>Prefixed 11-</td> <td>Prefixed 16-</td> <td>Prefixed 12-</td> </tr> </tbody> </table>	Model Name	10-10	10-10A	10-10	10-10A	10-10	10-10A	Model Numbers	600005 600006	600007 600011	600005 600006	600007 600011	600005	600004	Letter	A	B	C	D	E	F	Serial Numbers	Prefixed 10-	Prefixed 10-	Prefixed 12-	Prefixed 11-	Prefixed 16-	Prefixed 12-		
Model Name	10-10	10-10A	10-10	10-10A	10-10	10-10A																										
Model Numbers	600005 600006	600007 600011	600005 600006	600007 600011	600005	600004																										
Letter	A	B	C	D	E	F																										
Serial Numbers	Prefixed 10-	Prefixed 10-	Prefixed 12-	Prefixed 11-	Prefixed 16-	Prefixed 12-																										
1	110454	Nut - Hex 5/16-24	2	All																												
2	100440	Washer - 5/16	2	All																												
3		Clutch Guard Assy (see Figure 2)		All																												
4		Bar and Chain Assys	1	All																												
5	64325	Plate - Bar protector	2	A,B,C,D																												
6	102761	Screw - Hex hd 10-24 x 7/8	2	All																												
7	100352	Washer - #10	2	All																												
8	61678	Plug - Nut retainer	1	All																												
9	101326	Nut - Hex 10-24	2	All																												
10		Deleted																														
11	102130	Screw - Hex hd 1/4-20 x 1-1/2	1	All																												
12	100153	Lockwasher - 1/4	1	All																												
13	63484	Clamp - Frame	1	All																												
14	69054	Frame & Grip Assy	1	A,B,E,F																												
	68410	Frame & Grip Assy	1	C,D																												
15	103746	Nut - Hex 3/8-24	1	A,B,C,D,E																												
	110594	Nut - Hex 3/8-24	1	F																												
16		Clutch Assy (see Figure 2)		All																												
17	65370	Kit - Sprocket & Drum Assy	1	All																												
18	61692	. Shim - Sprocket	2	All																												
19	110330	Bearing - Sprocket	1	All																												
20	103879	Key - Woodruff	1	All																												
21	68166	Cover Assy - Air cleaner	1	A,C																												
	68445	Cover Assy - Air cleaner	1	B,D																												
	69033	Cover Assy - Air cleaner	1	E,F																												
22	65813	. Nut - Cover	1	All																												
23	68177	Plate - Instruction	1	B,C,D,E,F																												
24	66774	Filter - Air	1	All																												
25	62978	Screw - Special	3	All																												
26	102762	Screw - Hex hd 10-24 x 1/2	1	All																												
27	69890	Lockplate	1	All																												
28	83521	Kit - Fan housing	1	All																												
29	55615	. Guard - Flywheel	1	All																												
30	68531	Cap Assy - Fuel	1	All																												
31	68533	. Plug	1	All																												
32	63041	. Valve	1	All																												
33	63040	. Spring	1	All																												
34	69767	. Gasket	1	All																												
35	110334	Screw - Oval hd, 12-24 x 1-3/4	1	All																												
36	69684	Cover - Fuel tank	1	All																												
37	69345	Gasket - Cover	1	All																												
38	64848	Hose Assy - Fuel	1	All																												
39	63932	. Filter - Fuel	1	All																												
40	100440	. Washer	1	All																												
41	67944	Spring - Hose stiffener	1	All																												
42	110551	Screw - Hex hd 10-24 x 2-1/8	2	All																												
43	66681	Bracket Assy	1	A,B																												
	68807	Bracket Assy	1	C,D,E,F																												
44		Carburetor Assy (see Figure 4)	1	All																												
45	68132	Gasket - Carburetor	1	A,B,C,D																												
	83059	Gasket - Carburetor	1	E,F																												
46	66678	Spacer - Carburetor	1	A,B,C,D,E																												
	-84078	Spacer - Carburetor	1	F																												

Figure 1. General (Cont.)

Item No.	Part Number	Description	Units Per Assy	Usable on Code
47	68131	Gasket - Spacer	1	A,B,C,D,E
	-84081	Gasket - Spacer	1	F
48	110553	Screw - Hex hd 10-24 x 1-3/8	1	A,B,C,D
	110570	Screw - Hex hd 12-24 x 1-3/8	1	E,F
49	68582	Lockplate	1	All
50	100003	Washer - #10	2	A,B,C,D
	102115	Washer - #12	2	E,F
51	66189	Sleeve	2	A,B,C,D
52	110516	Screw - Hex hd 10-24 x 1-1/8	1	A,B,C,D
	110568	Screw - Hex hd 12-24 x 1-1/8	1	E,F
53	63475	Lockplate	1	A,B
	69516	Lockplate	1	C,D,E,F
54	64856	Washer - Special	1	All
55	102660	Screw - Skt hd 10-24 x 7/8	1	E,F
56	100003	Washer - #10	1	E,F
57	69772	Spacer - Fuel tank	1	E,F
58		Fuel Tank Assy (see Figure 3)		All
59	68130	Gasket - Fuel tank	1	A,B,C,D
	-84082	Gasket - Fuel tank	1	E,F
60	67907	Insulator - Fuel tank	1	A,B
	66659	Insulator - Fuel tank	1	C,D
	-84079	Insulator - Fuel tank	1	E,F
61	68130	Gasket - Insulator	1	A,B,C,D
	84082	Gasket - Insulator	1	E,F
62	110353	Screw - Oval hd 10-24 x 3/8	1	A
	106078	Screw - Pan hd 10-24 x 7/16 (SEMS)	1	B,C,D,E,F
63	102289	Screw - Hex hd 10-24 x 3/4	1	A,B,C,D
	-110566	Screw - Hex hd 10-24 x 5/8	1	E,F
64	69890	Lockplate	1	A,B
	68508	Lockplate	1	C,D,E,F
65	69838	Brace - Handle	1	All
	*68194	Kit - Spark arrester	1	A
66	102290	Screw - Hex hd 10-24 x 1-1/8	2	A
67	110264	Washer - #10	2	A
68	62380	Cover	1	A
69	62379B	Baffle (Delete - No longer available)	1	A
70	83105	Body & Duct Assy	1	A
71	**68187	Screw - Special	1	A
72	67922	Lockplate	1	A
73	110506	Screw - Hex hd 10-24 x 5/8	1	A
74	110529	Screw - Hex hd 10-24 x 1/2	1	A
75	***68512	Kit - Muffler	1	A,B,C,E,F
76	67838	Screw - Muffler long	2	A,B,C,E,F
77	67837	Screw - Muffler short	1	A,B,C,E,F
78	83993	Lockplate	1	A,B,C,E,F
79	63993	Gasket - Muffler screw	1	A,B,C,E,F
80	68863	Kit - Muffler	1	D
81	67838	Screw - Muffler long	2	D
82	67837	Screw - Muffler short	1	D
83	83993	Lockplate	1	D
84	110563	Screw - Skt hd 8-32 x 1/4	2	D
85	83069	Stop - Reed	1	D
86	64785	Reed	1	D
87	63993	Gasket - Muffler screw	1	D
88	68149	Gasket - Muffler	1	A,B,C,D
	**84007	Gasket - Muffler	1	E,F
89	62085A	Insulator - Shroud	2	A,B,C
	68581	Insulator - Shroud	2	D,E,F
90	67910	Shroud	1	All
91		Powerhead Assy (see Figure 5)		All

*Serial numbers 10-2453 to 10-5039 inclusive.

**Use Screw, P/N 110507, on units with serial numbers 10-2453 to 10-5039 inclusive.

***Used on all "A" coded units except serial numbers 10-2453 to 10-5039 inclusive.

**Gasket, P/N 84007, can be used only with Crankcase Assemblies, P/N 69993 and P/N84113, which have a recessed area on the muffler mounting flange.

**MAC 10-10
MAC 10-10A**

Master Illustrated Parts List, P/N 84693,
supersedes and cancels all previous lists
issued for the MAC 10-10 and MAC 10-10A
saws. Discard Illustrated Parts List, P/N 84357.

Part numbers which have changed since the previous printing of an illustrated parts list covering any of these saws, are indicated by a dash (-) preceding the new part number

SERVICE SPECIFICATIONS

Spark Plug Gap	-----	0.025 in.
Lamination Gap	-----	0.010 to 0.015 in.
Breaker Point Gap	-----	0.018 in.
Carburetor Adjustment		
Idle Needle	- Preliminary adjustment	1 turn open.
	Adjust for smooth idle and acceleration.	
Main Needle	- Preliminary adjustment	1 turn open.
	Adjust for maximum power under load.	
Torque Values		
Flywheel Nut	-----	240 to 300 inch-pounds.
Clutch Nut	-----	160 to 170 inch-pounds.
Connecting Rod Screws	-----	65 to 70 inch-pounds.

MAC 10-10
MAC 10-10A

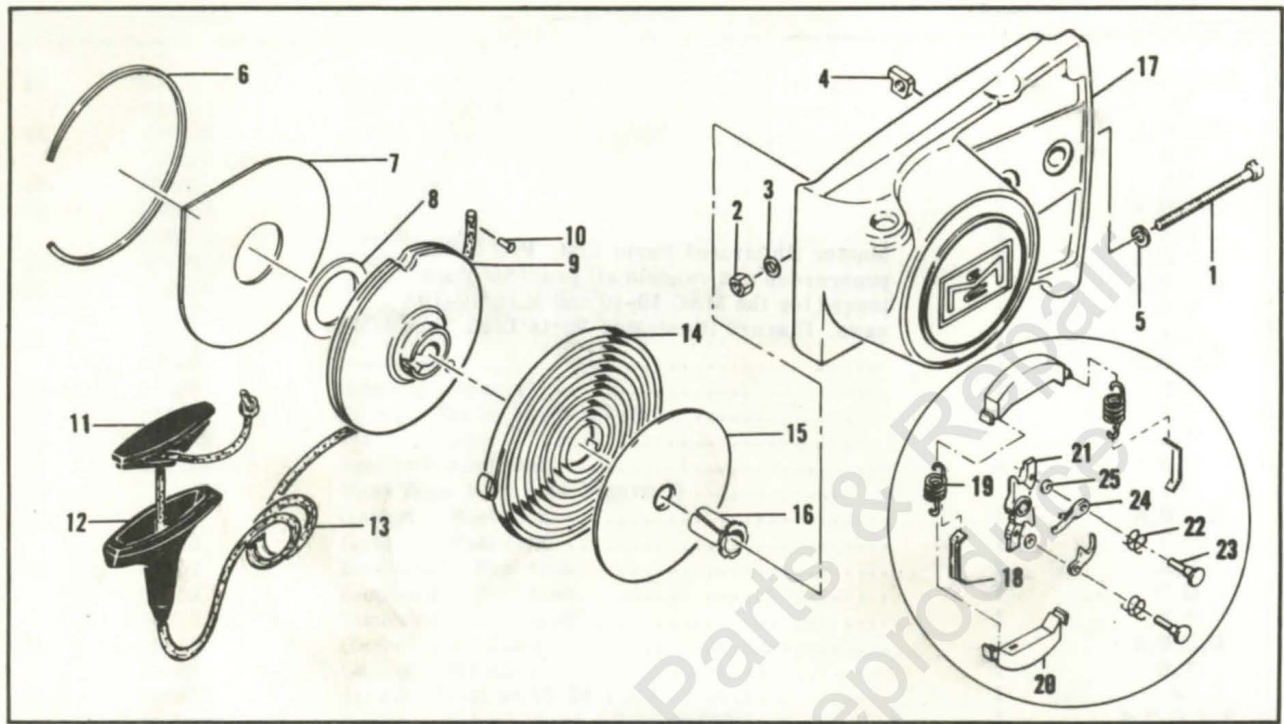


Figure 2. Clutch Guard and Clutch Assemblies

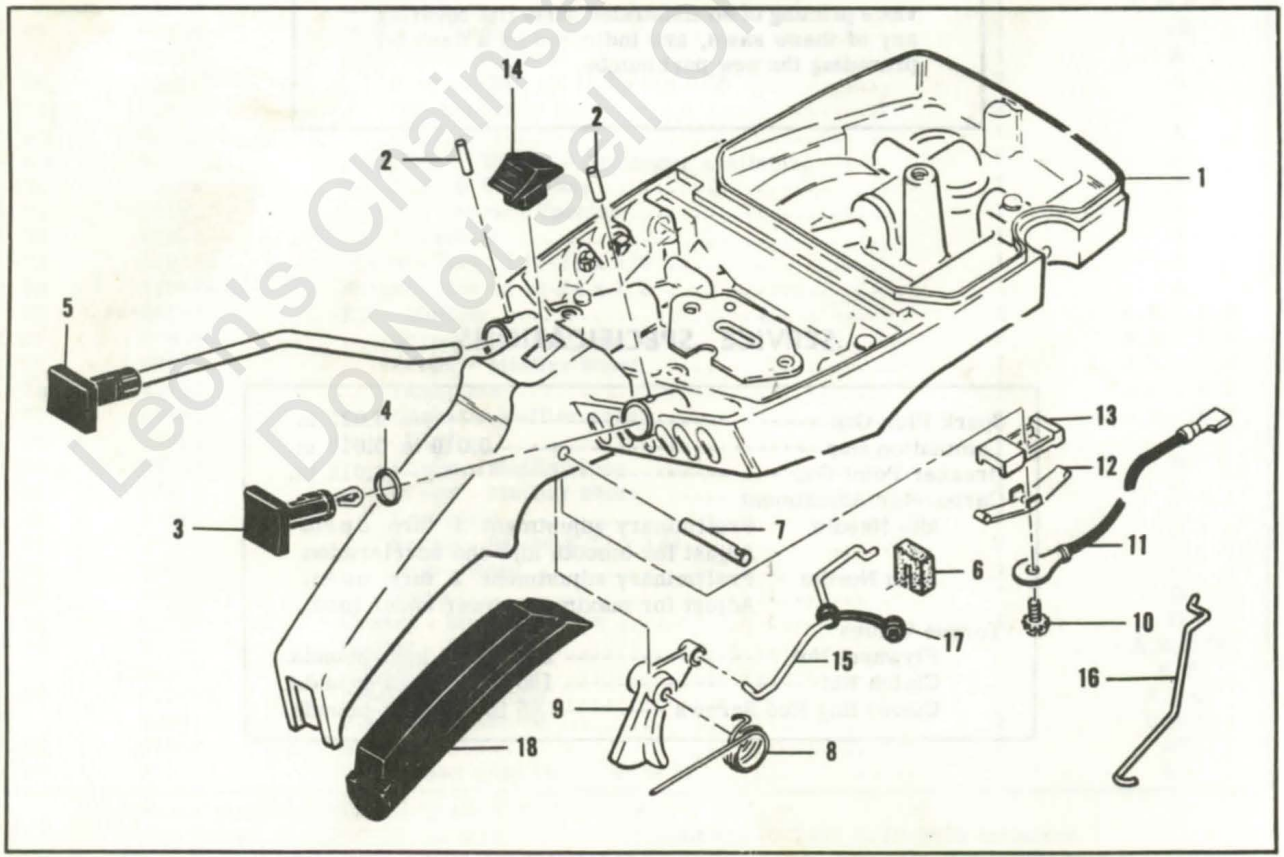


Figure 3. Fuel Tank Assembly

Figure 2. Clutch Guard and Clutch Assemblies

Item No.	Part Number	Description	Units Per Assy	Usable on Code
	83850	Clutch Guard Assy	1	All
1	102144	. Screw - Bar adjusting	1	All
2	102067	. Nut - Hex 10-24	1	All
3	110387	. Washer - Wave	1	All
4	61705	. Nut - Bar adjusting	1	All
5	101174	. Washer - #10	1	A,B,C,D
	110264	. Washer - #10	1	E,F
6	67205	. Retainer - Shield	1	All
7	63985	. Shield - Dust	1	All
8	63986	. Washer - Thrust	1	All
9	83651	. Drum - Starter	1	All
10	110470	. Rivet - Starter rope	1	All
11	62191A	. Insert - Handle	1	All
12	62190A	. Handle - Starter	1	All
13	69964	. Rope - Starter	1	All
14	68626	. Spring - Rewind	1	A,B,C,D
	83334	. Spring - Rewind	1	E,F
15	63987	. Shield - Spring	1	All
16	61635A	. Bushing - Nyliner	1	All
17	-83569	. Guard - Clutch	1	All
	83224	Clutch Assy	1	All
18	64583	. Retainer - Spring	2	All
19	83223	. Spring - Clutch	2	All
20	67233	. Shoe - Clutch	2	All
21	67149	. Rotor Assy - Clutch	1	All
22	68837	. . Spring - Pawl	2	All
23	67112	. . Rivet - Pawl	2	All
24	64857	. . Pawl - Starter	2	All
25	65473	. . Washer - Special	2	All

MAC 10 & MAC 10A - Usable on Code

Model Name	10-10	10-10A	10-10	10-10A	10-10	10-10A
Model Numbers	600035 600006	600097 600011	600095 600096	600007 600011	699305	600004
Letter	A	B	C	D	E	F
Serial Numbers	Prefixd 10-	Prefixd 10-	Prefixd 12-	Prefixd 11-	Prefixd 16-	Prefixd 12-

Figure 3. Fuel Tank Assembly

Item No.	Part Number	Description	Units Per Assy	Usable on Code
1	84183	Fuel Tank Assy	1	All
2	105673	Pin - Roll 3/32 x 9/16	2	All
3	68517	Button - Choke	1	A,B,C,D
	69041	Button - Choke	1	E,F
4	101056	"O" Ring	1	All
5	64871	Button & Rod Assy	1	All
6	67989	Seal - Throttle rod	1	A,B,C,D
	68522	Seal - Throttle rod	1	E,F
7	110378	Pin - Roll 3/16 x 15/16	1	All
8	65734	Spring - Throttle return	1	All
9	67224	Trigger	1	All
10	103672	Screw - Fil hd 8-32 x 1/2 (SEMS)	1	All
11	62973A	Wire Assy - Stop switch	1	All
12	62451	Contact - Switch	1	All
13	62950A	Base - Switch	1	All
14	62951	Button - Switch	1	All
15	68170	Rod - Throttle	1	All
16	67355	Rod - Choke	1	A,B,C,D
	69042	Rod - Choke	1	E,F
17	69043	Snubber - Rod	1	E,F
18	64872	Grip - Handle	1	D

MAC 10-10
MAC 10-10A

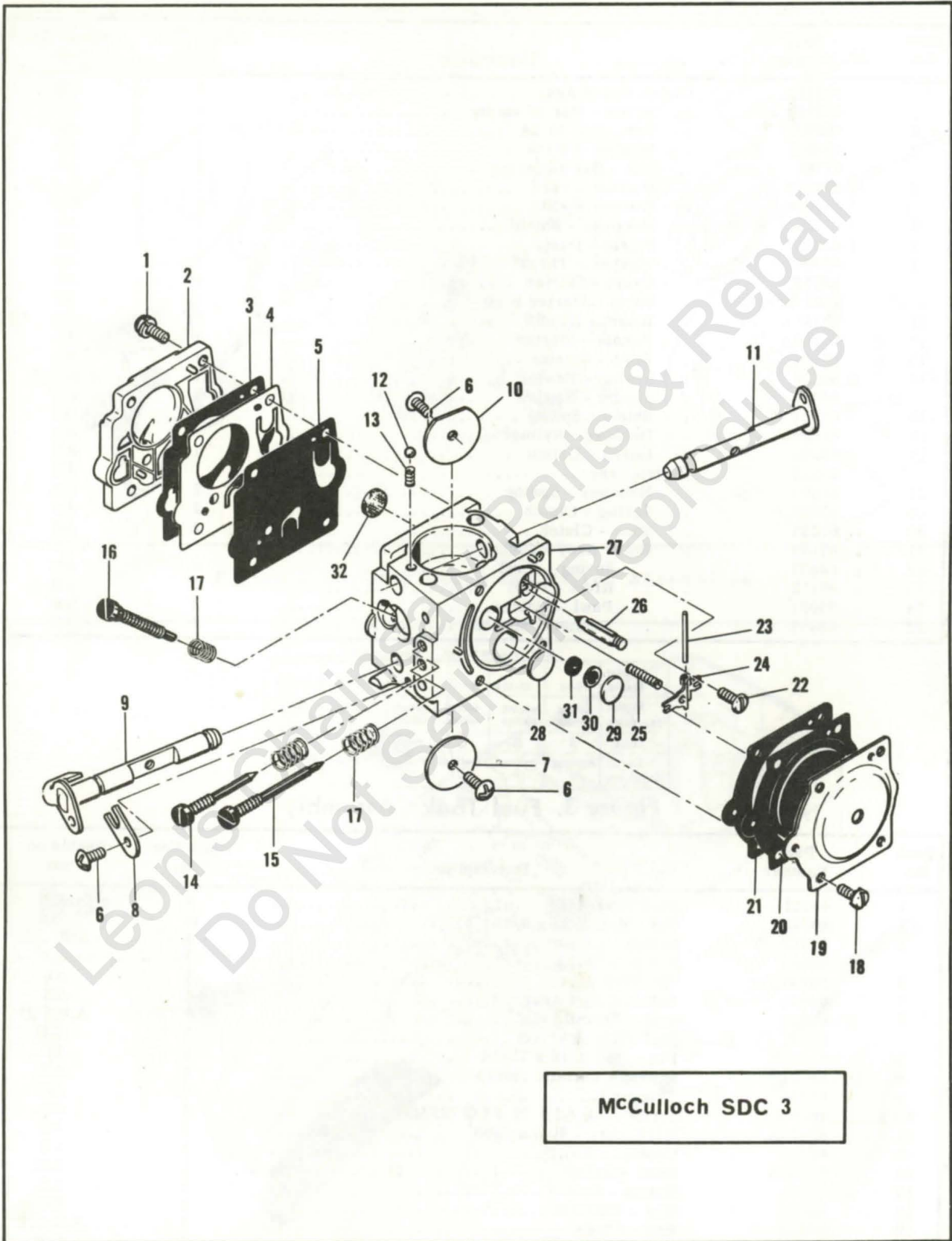


Figure 4. Carburetor Assembly

Figure 4. Carburetor Assembly

Item No.	Part Number	Description	Units Per Assy	Usable on Code			
MAC 10 & MAC 10A - Usable on Code							
	Model Name	10-10	10-10A	10-10	10-10A	10-10	10-10A
	Model Numbers	600005 600006	600007 600011	600005 600006	600007 600011	600005	600004
	Letter	A	B	C	D	E	F
	Serial Numbers	Prefixed 10-	Prefixed 10-	Prefixed 12-	Prefixed 11-	Prefixed 16-	Prefixed 12-
1	67876	Carburetor Assy	1	All			
2	67501	Screw - Pump cover	4	All			
3	67484	Cover - Pump	1	All			
4	*67495	Gasket - Cover	1	All			
5	*67498	Diaphragm - Check valve	1	All			
6	*83114	Diaphragm - Fuel pump	1	All			
7	*47690	Screw - Plate	3	All			
8	67487	Plate - Throttle	1	All			
9	67489	Clip - Shaft	1	All			
10	67486	Shaft Assy - Throttle	1	All			
11	67490	Plate - Choke	1	All			
12	67488	Shaft Assy - Choke	1	All			
13	*100302	Ball - Choke friction	1	All			
14	*67504	Spring - Choke friction	1	All			
15	*68104	Needle - High speed	1	All			
16	*68105	Needle - Idle	1	All			
17	*68106	Screw - Idle speed	1	All			
18	*67502	Spring - Needle	3	All			
19	70798	Screw - Diaphragm cover	4	All			
20	67485	Cover - Diaphragm	1	All			
21	*67499	Diaphragm - Metering	1	All			
22	*67496	Gasket - Diaphragm	1	All			
23	*67500	Screw - Lever pin	1	All			
24	*67508	Pin - Lever	1	All			
25	*67509	Lever - Inlet	1	All			
26	*67503	Spring - Lever	1	All			
27	*67491	Valve - Needle	1	All			
28	68103	Body Assy - Carburetor	1	All			
29	*71690	Plug - 3/8	1	All			
30	*69506	Plug - 5/16	1	All			
31	69203	Seat Assy	1	All			
32	69204	Valve	1	All			
	*67507	Screen - Fuel	1	All			
	*67482	Gasket Set					
	68107	Repair Kit					

*Indicates parts included in Repair Kit P/N 68107.

**MAC 10-10
MAC 10-10A**

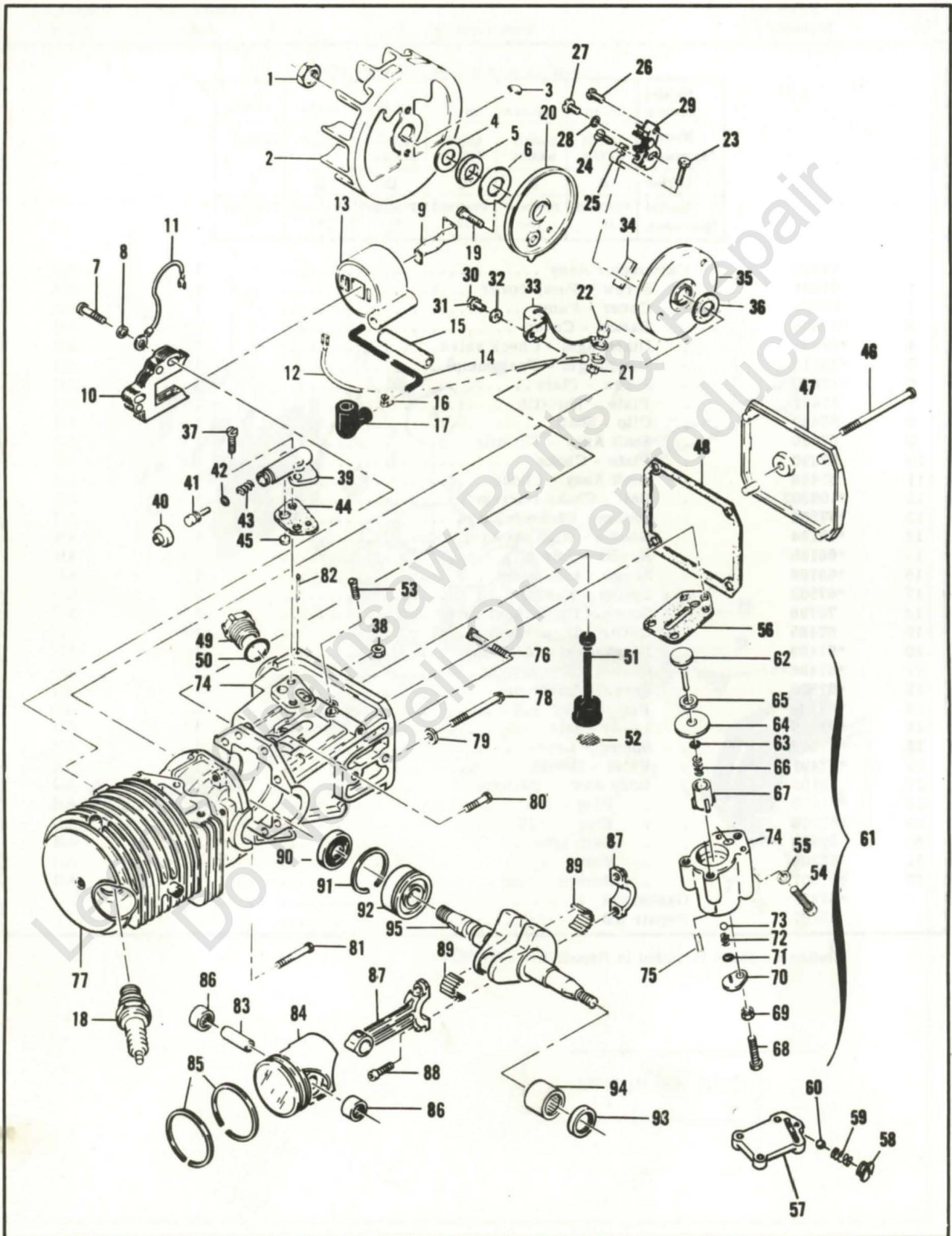


Figure 5. Powerhead Assembly

Figure 5. Powerhead Assembly

Item No.	Part Number	Description	Units Per Assy	Usable on Code																												
MAC 10 & MAC 10A - Usable on Code																																
		<table border="1"> <thead> <tr> <th>Model Name</th> <th>10-10</th> <th>10-10A</th> <th>10-10</th> <th>10-10A</th> <th>10-10</th> <th>10-10A</th> </tr> </thead> <tbody> <tr> <td>Model Numbers</td> <td>600005 600006</td> <td>600007 600011</td> <td>600005 600006</td> <td>600007 600011</td> <td>600005</td> <td>600004</td> </tr> <tr> <td>Letter</td> <td>A</td> <td>B</td> <td>C</td> <td>D</td> <td>E</td> <td>F</td> </tr> <tr> <td>Serial Numbers</td> <td>Prefixed 10-</td> <td>Prefixed 10-</td> <td>Prefixed 12-</td> <td>Prefixed 11-</td> <td>Prefixed 16-</td> <td>Prefixed 12-</td> </tr> </tbody> </table>	Model Name	10-10	10-10A	10-10	10-10A	10-10	10-10A	Model Numbers	600005 600006	600007 600011	600005 600006	600007 600011	600005	600004	Letter	A	B	C	D	E	F	Serial Numbers	Prefixed 10-	Prefixed 10-	Prefixed 12-	Prefixed 11-	Prefixed 16-	Prefixed 12-		
Model Name	10-10	10-10A	10-10	10-10A	10-10	10-10A																										
Model Numbers	600005 600006	600007 600011	600005 600006	600007 600011	600005	600004																										
Letter	A	B	C	D	E	F																										
Serial Numbers	Prefixed 10-	Prefixed 10-	Prefixed 12-	Prefixed 11-	Prefixed 16-	Prefixed 12-																										
1	101391	Nut - Hex 3/8-24	1	A,B,C,D																												
	110594	Nut - Hex 3/8-24	1	E,F																												
2	61737A	Flywheel Assy	1	All																												
3	103879	Key - Woodruff	1	All																												
4	67057	Washer - Thrust	1	All																												
5	67056	Seal	1	All																												
6	67054	Washer - Thrust	1	All																												
7	101965	Screw - Fil hd 10-24 x 7/8 (SEMS)	2	A,B																												
	110127	Screw - Hex hd 10-24 x 7/8 (SEMS)	2	C,D,E,F																												
8	100003	Washer - #10	2	All																												
9	51253	Retainer - Coil	1	All																												
10	68164	Lamination Assy	1	All																												
11	62819	Wire Assy - Ground	1	All																												
12	69344	Wire Assy - Primary	1	All																												
13	69798	Kit - Coil & Terminal Assy	1	All																												
14	69966	Wire & Sleeve Assy - Spark plug	1	All																												
15	67127	Sleeve	1	All																												
16	62932	Connector	1	All																												
17	62926	Boot	1	All																												
18	63097	Spark Plug AC CS 45T	1	All																												
19	110349	Screw - Rd hd 8-32 x 3/4	1	All																												
20	62362	Cover - Breaker box	1	All																												
21	100298	Nut - Hex 6-32	1	All																												
22	62365	Spacer - Breaker screw	1	All																												
23	110346	Screw - Hex hd 6-32 x 3/4	1	All																												
24	110489	Screw - Pan hd 6-32 x 7/16 s/t	1	E,F																												
25	83126	Strap - Conduction	1	E,F																												
26	100934	Screw - Rd hd 8-32 x 3/8	1	All																												
27	100934	Screw - Rd hd 8-32 x 3/8	1	A,B,C,D																												
	110445	Screw - Truss hd 8-32 x 3/8	1	E,F																												
28	105976	Washer - #8	1	All																												
29	62363	Breaker Assy	1	A,B,C,D																												
	66231	Breaker Assy	1	E,F																												
30	105249	Screw - Rd hd 8-32 x 3/8 (SEMS)	1	A,B																												
	110623	Screw - Fil hd 8-32 x 1/2	1	C,D																												
	103672	Screw - Fil hd 8-32 x 1/2	1	E,F																												
31	100252	Lockwasher - #8	1	All																												
32	100080	Washer - #8	1	All																												
33	61650	Condenser	1	All																												
34	54184	Wiper - Cam	1	All																												
35	62361	Box - Breaker	1	A,B,C,D																												
	83125	Box - Breaker	1	E,F																												
36	67051	Seal	1	All																												
37	110623	Screw - Fil hd 8-32 x 1/2	2	All																												
38	100955	Nut - Hex 8-32	1	All																												
39	62261A	Housing - Pump	1	All																												
40	62262	Cap - Housing	1	All																												
41	62266	Plunger - Pump	1	All																												
42	101056	"O" Ring	1	All																												
43	66687	Spring - Plunger	1	All																												
44	62230	Gasket - Pump	1	All																												
45	62909	Valve - Pump	1	All																												
46	110291	Screw - Pan hd 10-24 x 2-5/8	1	All																												

MAC 10-10
MAC 10-10A

Figure 5. Powerhead Assembly (Cont.)

Item No.	Part Number	Description	Units Per Assy	Usable on Code
47	63072	Cover - Oil tank	1	All
48	62116	Gasket - Cover	1	All
49	57129A	Cap - Oil tank	1	A,B,C,D
	68809	Cap - Oil tank	1	E,F
50	101148	"O" Ring	1	All
51	62123B	Hose Assy - Oil	1	All
52	51506	. Screen - Hose	1	All
53	110333	Screw - Oval hd 8-32 x 1/2	3	A,B,C,D,E
54	-102660	Screw - Skt hd 10-24 x 7/8	1	F
55	-24236	Washer - Special	1	F
56	62274	Gasket - Pump	1	A,B,C,D,E
	-83790	Gasket - Pump	1	F
57	68711	Body Assy - Check valve	1	A,C,E
58	68714	. Screw - Special	1	A,C,E
59	63034	. Spring - Check valve	1	A,C,E
60	100071	. Ball - 5/32 in. dia.	1	A,C,E
61	83134	Pump Assy - Pulse	1	B,D
	-83786	Pump Assy - Pulse	1	F
62	60260A	. Piston Assy - Pump	1	B,D
63	104001	. "O" Ring	1	B,D
64	60263	. Ring - Piston	1	B,D
65	60937	. Washer - Teflon	1	B,D
66	60259	. Spring - Piston oiler	1	B,D
67	62227	. Sleeve - Adjustment	1	B,D
68	110386	. Screw - Hex hd 8-32 x 1	1	B,D
69	100251	. Nut - Hex 8-32	1	B,D
70	63858	. Cover - Outlet valve	1	B,D
	-62407	. Cover - Outlet valve	1	F
71	106104	. "O" Ring	1	B,D
72	62885A	. Spring - Outlet valve	1	B,D
73	102809	. Ball - Valve	1	B,D
74	83128	. Body Assy - Pump	1	B,D
	-83787	. Body Assy - Pump	1	F
75	-110643	Screw - Set	1	F
76	62065	Bolt - Bar mounting	2	All
77	67908	Crankcase Assy	1	A,B,C,D
	* 69993	Crankcase Assy	1	E
	*-84113	Crankcase Assy	1	F
78	62105	. Screw Assy - Sealing	4	All
79	62842	. Washer - Sealing	4	All
80	110288	. Screw Assy - Hex 8-32 x 3/4	3	All
81	110618	. Screw Assy - Hex 8-32 x 1-3/8	1	All
82	100010	. Pin - Cotter	1	All
83	61649	Pin - Piston	1	All
84	69212	Piston Assy	1	All
85	62814	. Ring Set - Piston	1	All
86	103512	. Bearing - Needle	2	A,B,C,D
	103085	. Bearing - Needle	2	E
87	65401	Connecting Rod Assy	1	All
88	61627A	. Screw - Skt hd special	2	All
89	63225	. Roller - Needle (set of 20)	1	All
90	67906	Seal - Oil	1	All
91	63464	Ring - Snap	1	All
92	67905	Bearing - Ball	1	All
93	65747	Seal - Oil	1	A,B,C,D
	110260	Seal - Oil	1	E
94	104357	Bearing - Needle	1	All
95	63336	Crankshaft	1	All

* Crankshaft Assemblies, P/N 69993 and P/N 84113, require Muffler Gasket, P/N 84007, for mounting in a recessed area on the muffler mounting flange.

Accessories

Item No.	Part Number	Description	Units Per Assy	Usable on Code			
MAC 10 & MAC 10A - Usable on Code							
	Model Name	10-10	10-10A	10-10	10-10A	10-10	10-10A
	Model Numbers	600005 600006	600007 600011	600005 600006	600007 600011	600005	600004
	Letter	A	B	C	D	E	F
	Serial Numbers	Prefixed 10-	Prefixed 10-	Prefixed 12-	Prefixed 11-	Prefixed 16-	Prefixed 12-
69210		Piston Assy - 0.020 in. oversize					All
62813		. Ring Set - Piston 0.020 in. oversize					All
103085		. Bearing - Needle (2)					All
69211		Piston Assy - 0.030 in. oversize					All
62812		. Ring Set - Piston 0.030 in. oversize					All
103085		. Bearing - Needle (2)					All
63432		Spark Plug - AC CS 42T					All
65778		Spark Plug - AC CS 41T					All
65712		Guide - Timing					All
64330		Bar Plate Set					All
69058		Kit - Wrap-around frame					All
63341A		Kit - Spike					All
63746		Scrench					All
62827		Wrench - Screwdriver					All
-69191		Kit - Pressure adaptor					All
-83434		Manual - Owner's					All

Leon's Chainsaw Parts & Repair
Do Not Sell Or Reproduce

40:1 TWO-CYCLE MOTOR OIL



6 oz. can #78960
 6-pack #78961
 16oz. can #78963
 6-pack #78964
 1qt. bottle #110626

Reduces smoke, carbon and engine wear.

CHAIN, BAR AND SPROCKET OIL

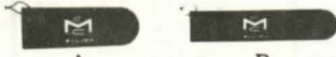


1 qt. bottle #110631
 Case of 24 #110632

Specially designed for extra lubrication of bars and chains.

BAR GUARDS

Protect bar and chain from accidental damage.



A B
 Black Polyvinylchloride

(A) for wide bars #56927
 (B) narrow bars #64930



C D
 Rigid Yellow Plastic

(C) MAC 10-16, 20" #66544
 (D) PM6-12, 16" #83124

LOCQUIC AND

Primer. Cleans, degreases, and accelerates curing.

7-1/2 oz. spray can. #69794



LOCTITE

Sealant, bonding agent

10cc plastic bottle

#67537



SPRAY PAINT

Black

12 oz. can #103503
 Case of 12 #103400



Yellow

12 oz. can #102449
 Case of 12 #102464

STARTER ROPE

Solid, braided nylon



100' spool

#36825

PRESSURE TEST TOOLS

For leakage check of crankcase, fuel system.



Basic unit #62849

CHAIN SHARPENING TOOLS

The ● shows which tools are used on chains		S-25	SM-57	S-40	S-80	S-90
MCCULLOCH FILES	1/8" round	●				
	5/32" round	●	●			
	3/16" round	●				
	7/32" round			●		
	1/4" round				●	
	9/32" round					●
8" flat	●	●	●	●	●	
6" flat safety	●	●	●	●	●	
FILE GUIDE & FILE						
#67750 (1/8" round)		●				
#60950 (7/32" round) (Also holds 3/16 and 1/4" round)			●		●	
DEPTH GAUGE TOOLS						
#56241 .045-.060"				●	●	●
#64198 .035-.060"				●	●	●
#64359 .045-.050"				●		
#67688 .015-.020"				●		
#67680 .025-.030"				●	●	●
FILE-N-JOINT Assures correct filing angle, height.						
#61034		●	●	●	●	●
"BREAK ALL" CHAIN BREAKER						
Required when repairing chain.	#61753					
	Instructions included.					

The information contained in this Master Illustrated Parts List is based on original Illustrated Parts Lists, Engineering Records and the Master Parts Price List and is accurate to the best of our knowledge.

Each chain saw model is given a code letter. Whenever the code letter appears in the right hand column, the part is used on the engines of the model for which the code letter stands. When a part is used on all models covered in the Master Illustrated Parts List, the word "All" appears in the right-hand column instead of the code letters.

Names of parts have been checked and made to agree with the names given in the Master Parts Price List except in a very few cases where additional nomenclature was required.

The illustrations of the individual parts do not necessarily picture all the differences between parts with the same item number because the illustrations would be too complicated for use if they did. Instead, the illustration shows a representative part for each item number.



McCULLOCH



● MANUFACTURING

● SALES

● SERVICE ●

McCULLOCH CORPORATION

6101 WEST CENTURY BLVD., LOS ANGELES, CALIFORNIA 90045

INTERNATIONAL DIVISIONS:

LOS ANGELES, CALIF., P.O. BOX 45466

SINGAPORE, 431-432 PEOPLE'S PARK COMPLEX

McCULLOCH OF CANADA LTD.

6338 VISCOUNT ROAD, MALTON, ONTARIO, CANADA

McCULLOCH OF EUROPE, N. V.

GEERDEGEM SCHONENBERG, 299 2800 MECHELEN, BELGIUM

McCULLOCH OF AUSTRALIA PTY., LTD.

P.O. BOX 223, SEVEN HILLS, N.S.W. 2147, AUSTRALIA