

ILLUSTRATED PARTS LIST

EAGER BEAVER® 2.3

600145-02 11-
600145-03 11-
600145-04 11-

POWER MAC™ 380

600141-02 11-
600141-06 11-
600141-10 11-
600141-11 11-
600141-12 11-

McCulloch Chain Saws are identified by a model number (in this instance 600141) followed by a suffix number (-02,-06 etc.) stamped on the identification plate attached to the saw. Suffix numbers denote variations in parts or assemblies used in the manufacture of this product.

Part numbers listed in this IPL which have a circled number(s) preceding the part number description, indicate the part is used only on the model(s) identified by the suffix number(s).

Part numbers and descriptions without a circled number(s) apply to all versions of the chain saw model.

Part numbers which have one or more dots (.) preceding their descriptions may be ordered individually, but they are also included in the kit or assembly whose description begins directly above the dot(s).

Part numbers in this IPL which were not in the previous IPL covering these saws, are indicated by a dash (-) preceding the new part number.

The policy of McCulloch Corporation is one of continual improvement in design, manufacturing and engineering advancement wherever possible to assure still finer power tools. Hence, specifications, equipment, colors, design and manufacturer's suggested list prices are subject to change without notice and McCulloch Corporation reserves the right to make such changes without prior notification or obligation to backfit or supply backfit components for units previously shipped from the factory.

EAGER BEAVER® 2.3

AND

POWER MAC™ 380

CHAIN SAW

2 Bar Bolt Models

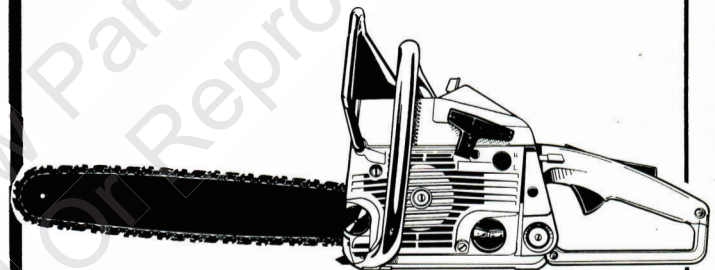


TABLE OF CONTENTS

GENERAL ASSEMBLY	2
SERVICE SPECIFICATIONS	3

MARCH 1987



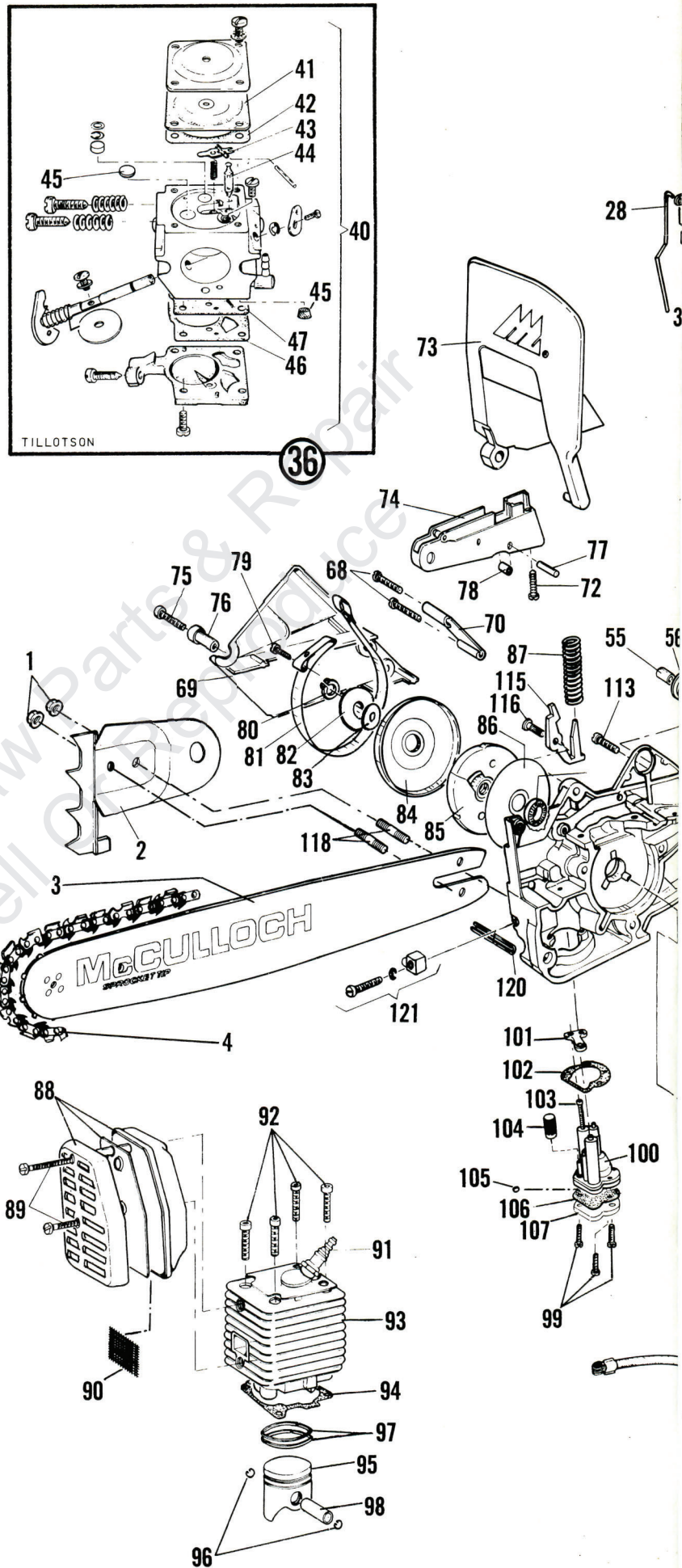
McCULLOCH
CORPORATION

GENERAL ASSEMBLY

ITEM NO.	PART NUMBER	DESCRIPTION	UNITS PER ASY.
1	235217	Bar Retaining Nut - M6	2
2	236992	Spike	1
3	214236 ①③	Guide Bar - 16 Inches	1
3	219276 ②④	Guide Bar - 18 Inches	1
4	218097-12 ①③	Saw Chain - 16 Inches (MP 370 GLX 55CL)	1
4	219275-12 ②④	Saw Chain - 18 Inches (MP 370 GLX 60CL)	1
5	235207	Screw - M5 x 14	2
6	235377	Starter Assembly	1
7	235430	. Screw	1
8	235048	. Starter - Washer	2
9	235431	. Nut	1
10	235372	. Drum/Rope Assembly	1
11	83203	. . Starter Rope	1
12	235371	. Spring - Rewind	1
13	235043	. Starter Handle	1
14	235643	Fan Baffle	1
15	235032	Cover - Air Filter	1
16	235030	Knob - Filter Cover	1
17	235526	Air Filter	1
18	235216	Nut - M5	1
19	235163	Washer	1
20	235225	Washer - Spring	1
21	235020	Plate - Choke	1
22	235187	Kit - Choke Knob	1
23	235033	Bushing - Choke	1
24	235707	Grommet - Air Filter	1
25	235216	Nut - M5	1
26	235189	Manual Oil Lever	1
27	235281	Clip - Lever Retaining	1
28	235193	Rod - Manual Oiler	1
29	-- --		
30	235028	Top Cover - Engine	1
31	235216	Nut - Carburetor M5	2
33	235029	Bolt - Carburetor (Left)	1
32	235183	Bolt - Carburetor (Right)	1
34	235234 ⑤	Gasket - Carburetor Cover	1
35	235522	Guide - Screwdriver	1
36	235449	Carburetor Assembly	1
37	235016 ⑤	Gasket - Carburetor	1
38	235120	Valve - Reed	1
39	235015 ⑤	Gasket - Reed	1
40	235370	Kit - Carburetor Repair	1
41	235254 ⑤	. Diaphragm - Metering	1
42	-- --	. Gasket - Diaphragm	1
43	-- --	. Lever - Inlet Control	1
44	-- --	. Needle - Inlet	1
45	-- --	. Welch Plug & Strainer	1
46	-- --	. Gasket - Fuel Pump	1
47	235254	. Diaphragm - Fuel Pump	1
48	235261	Handle - Front	1
49	235210	Screw - Slt'd. Hd. M5 x 25	1
50	235248	Washer - M5	1
51	235216	Nut - M5	1
52	235244	Screw - Slt'd. Hd. M5 x 45	1
53	235248	Washer	1
54	235642	Nut - Hex Head M5	2
55	235106	Bushing	4

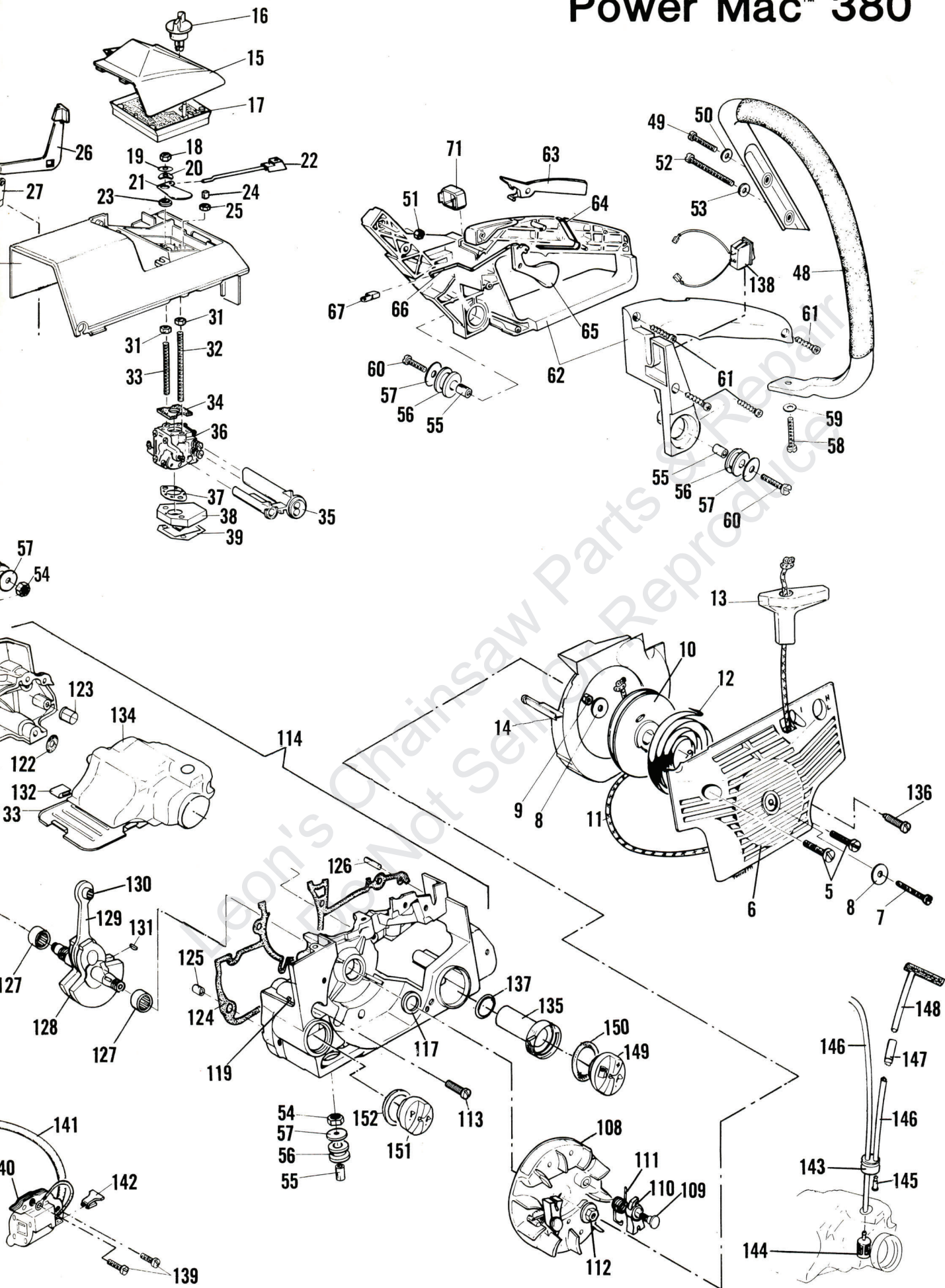
ITEM NO.	PART NUMBER	DESCRIPTION	UNITS PER ASY.
56	235105	Shock Mount - Rubber	4
57	235107	Washer	4
58	235239	Screw - Slt'd. Hd. M5 x 20	1
59	235248	Washer	1
		REAR HANDLE ASSEMBLY	
60	235210	Screw - Slt'd. Hd. M5 x 25	1
61	235205	Screw - Slt'd. Hd.	4
62	235351	Kit - Rear Handle	1
63	235519	. Safety Trigger	1
64	235104	. Spring	1
65	235521	. Throttle Trigger	1
66	235022	Rod - Throttle Trigger	1
67	235281	Retainer - Throttle Rod	1
68	235212	Screw - Clutch Cover M5 x 35	2
69	235427	Cover - Clutch	1
70	235155	Spacer	1
71	235170	Plug	1
72	235205	Screw - Brake Box	1
73	235653	Lever - CHAIN BRAKE	1
74	235177	Brake Box	1
75	235530	Screw - Skt. Hd. M6 x 35	1
76	235512	Brake Bushing	1
77	235226	Pivot - Brake Band	1
78	214368	Bearing - Roller	1
79	235812	Screw - Brake Band	1
80	235224	Ring - Seeger	1
81	235073	Brake Band	1
82	235287	Washer - Clutch	1
83	235164	Washer	1
84	215252	Drum/Sprocket Assembly	1
85	235115	Clutch	1
86	235701	Sawdust Shield	1
87	235076 ⑦	Spring - Brake Latch	1
88	235669	Muffler Assembly	1
89	235213	. Screw - M5 x 50	2
90	235665	. Spark Arrester Screen	1
91	214223	Spark Plug	1
92	235214	Cylinder Screw - M6 x 20	4
93	235479	Kit - Cylinder	1
94	235135	. Gasket - Cylinder	1
95	235478	. Piston Assembly	1
96	235008	. . Ring - Snap	2
97	235178	. . Ring - Piston	2
98	-- --	. . Wrist Pin	1
99	235801	Screw - M4 x 16 TCE	3
100	235513	Kit - Oil Pump	1
101	235159 ⑤	. Gasket - Oil Pump	1
102	235051 ⑤	. Gasket - Oil Pump	1
103	235173	Screw - Oil Flow Adjustment	1
104	235438	Screen - Oil Filter	1
105	235186	Check Ball - Oil Pump	1
106	-- -- ⑤	Gasket - Oil Pump	1
107	-- --	Cover - Oiler Body	1
108	235138	Flywheel/Pawl Assembly	1

ITEM NO.	PART NUMBER	DESCRIPTION	UNITS PER ASY.
109	235516	. Pin - Pawl	2
110	235517	. Pawl - Starter	2
111	235518	. Spring - Pawl	2
112	235218	Nut - M8	1
113	235211	Screw - M5 x 30 (Crankcase)	7
114	236996	Kit- Crankcase	1
115	215758	⑦ . Kit- Brake Latch	1
116	235075	. Latch - Pivot	1
117	235229	. Seal	2
118	236982	. Stud - Guide Bar	2
119	-228122	. Cotter Key - Oil Vent	1
120	235222	Chain Catcher	1
121	235574	Kit - Chain Tension Adjusting	1
122	-- --	⑤ Gasket - Crankcase	1
123	235672	Support - Rubber	1
124	-- --	⑤ Gasket - Crankcase	1
125	235190	Bushing	1
126	235221	Pin	1
127	235230	Bearing - Crankshaft	2
128	228085	Kit - Crankshaft	1
129	-- --	. Connecting Rod	1
130	235742	. Bearing - Needle	1
131	102164	. Key - Woodruff	1
132	235674	Support	1
133	235670	⑤ Protective Shield - Fuel Tank	1
134	235729	Fuel Tank Assembly	1
135	235861	⑤ ⑥ . Fuel Tank Neck	1
136	228554	⑥ Screw	1
137	235510	⑤ . "O" Ring	1
138	228138	Kit - ON/OFF Knob	1
139	235239	Screw - Ignition	2
140	228416	Electronic Ignition System	1
141	235238	. High Tension Wire	1
142	228139	Contact - Ignition	1
143	235675	Grommet - Fuel Tank	1
144	93720	Filter - Fuel Tank	1
145	235673	Screw - Fuel Line Vent	1
146	235713	⑤ Fuel Hose	1
147	235741	Valve - Fuel Line Vent	1
148	235758	⑤ Fuel Line Vent Assembly	1
149	235788	Fuel Cap	1
150	235510	⑤ . "O" Ring	1
151	235789	Oil Cap	1
152	235061	⑤ . Gasket - Oil Cap	1



- ① Used on Power Mac™ 380 models with suffix numbers -02, -06.
- ② Used on Power Mac™ 380 models with suffix numbers -10, -11, and -12.
- ③ Used on Eager Beaver™ 2.3 models with suffix number -02.
- ④ Used on Eager Beaver™ 2.3 models with suffix numbers -03 and -06.
- ⑤ Contained in Crankcase Gasket Kit, P/N 235796.
- ⑥ Remove screw and fuel tank neck, Item No. 135, before taking crankcase apart.
- ⑦ Kit-Brake Latch includes Item No. 87, Spring-Brake Latch.

Power Mac™ 380

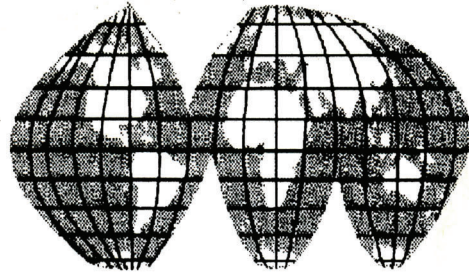


SERVICE SPECIFICATIONS

Spark Plug Gap	.025 inch (.63 mm)
Lamination Gap	.010 to .012 inch (.25 to .30 mm)
Timing	26 BTDC
Clutch Engagement Speed	3500 RPM
Idle Speed	2800 RPM
Displacement	2.3 cubic inches
Bore and Stroke	1.575 x 1.181 inches (39 to 30 mm)
Ignition	Solid State
Fuel/Oil Mixture Ratio	40:1 with McCulloch Oil
Oil Tank Capacity	6.8 ounces (204 cc)
Fuel Type	Regular grade, leaded
Fuel Tank Capacity	15.2 ounces (456 cc)
Filter System - Fuel	Felt/Replaceable
Filter System - Air	Felt with Seal/Replaceable
Piston Rings	2 Cast Iron Compression
Carburetor	Diaphragm Type, 2 needle
Weight with bar and chain: PRO MAC 380	12.6 pounds



McCULLOCH
CORPORATION



● **MANUFACTURING** ● **SALES** ● **SERVICE** ●

900 Lake Havasu Ave. ● Lake Havasu City, AZ 86403-2891

**FOR SERVICE-RELATED PROBLEMS,
REPAIR OR MAINTENANCE TAKE
YOUR UNIT TO THE NEAREST
AUTHORIZED McCULLOCH
SERVICING DEALER LISTED UNDER
SAWS IN YOUR TELEPHONE
DIRECTORY YELLOW PAGES.**

If additional assistance is required, call this toll-free hot-line:

(800) 423-6302

Arizona residents call collect (602) 453-3681