

# ILLUSTRATED PARTS LIST

MODELS	SERIAL NUMBER PREFIX	MODELS	SERIAL NUMBER PREFIX
600132B	11-	600132C	11-

## EAGER BEAVER™ 2.1 CHAIN SAW



McCulloch chain saws are identified by a model number (in this instance, 600132 ) followed by a suffix letter ( B and C ) stamped on the identification plate attached to the saw. Suffix letters denote variations in parts or assemblies in the manufacture of the saw.

Part numbers which have one or more dots ( . ) preceding their descriptions may be ordered individually, but they are also included in the kit or assembly whose description begins directly above the dot(s).

The policy of McCulloch Corporation is one of continual improvement in design, manufacturing and engineering advancement wherever possible to assure still finer two-cycle power tools. Hence, specifications, equipment, colors, design and manufacturer's suggested list prices are subject to change without notice and McCulloch Corporation reserves the right to make such changes without prior notification or obligation to backfit or supply backfit components for units previously shipped from the factory.

### - CONTENTS -

	Page
Figure 1. General Assembly . . . . .	2
Figure 2. CHAIN BRAKE Assembly . . . . .	4
Figure 3. Carburetor Assembly . . . . .	5
Figure 4. Powerhead Assembly . . . . .	6
Figure 5. Handle Assembly . . . . .	8
Service Specifications . . . . .	9
Bar & Chain Specifications . . . . .	9
Torque Chart . . . . .	9
Tools and Accessories . . . . .	9

AUGUST 1986





Figure 1

# GENERAL ASSEMBLY

EAGER BEAVER 2.1

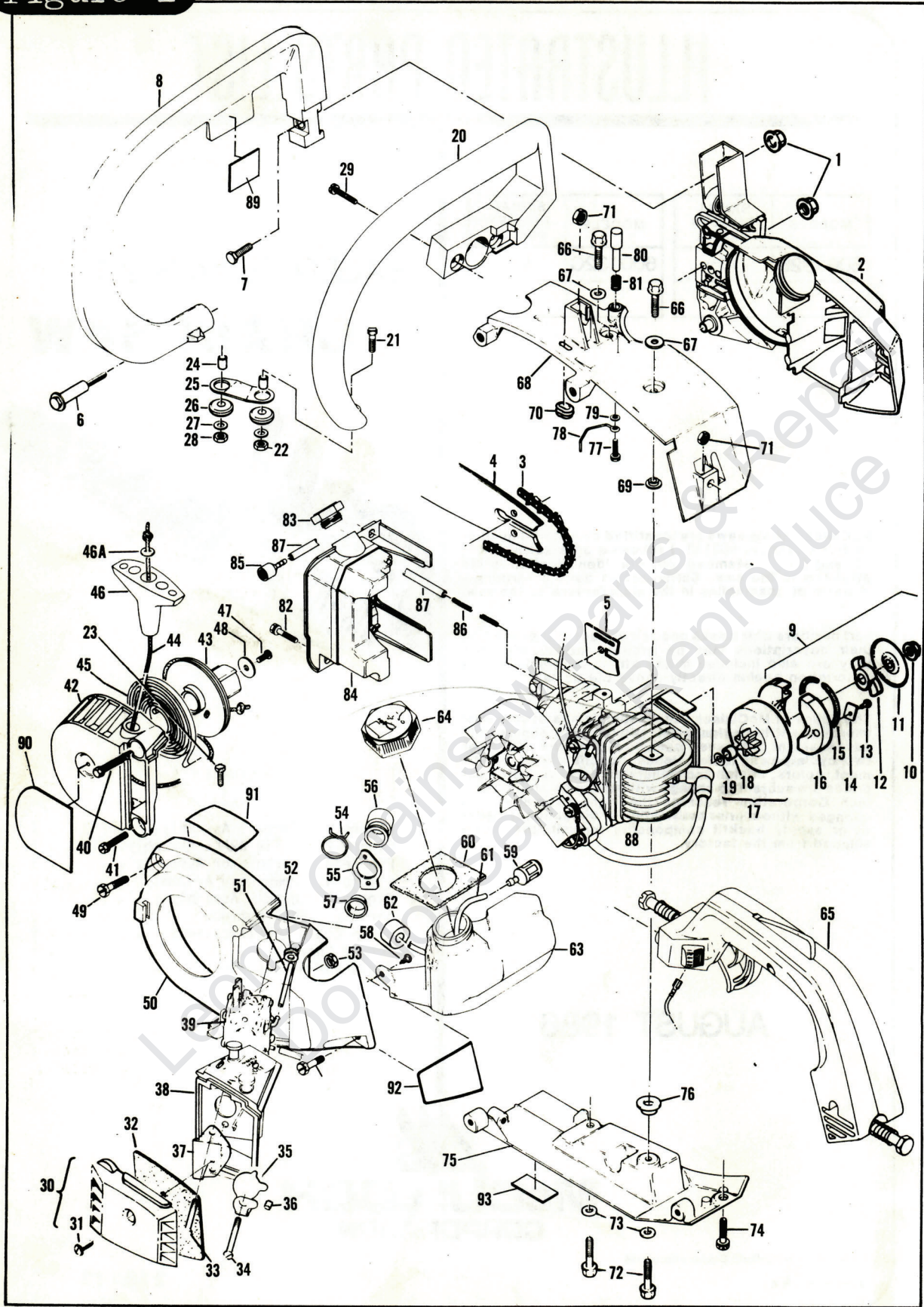




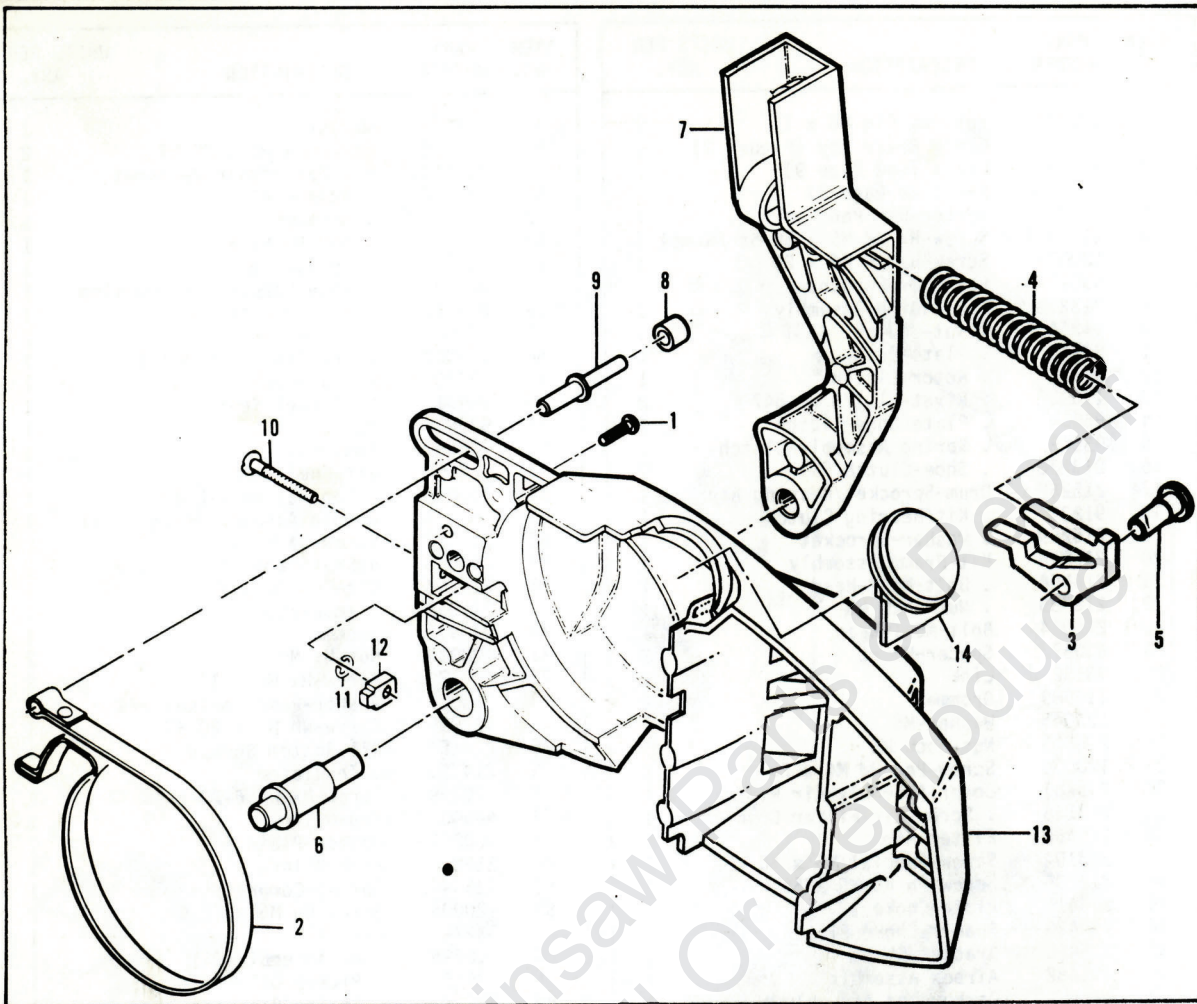
FIGURE 1 GENERAL ASSEMBLY

ITEM NO.	PART NUMBER	DESCRIPTION	UNITS PER ASY.	ITEM NO.	PART NUMBER	DESCRIPTION	UNITS PER ASY.
1	120029	Nut-Hex Flg M6 x 1	2	48	68497	Washer	1
2	-- --	Chain Brake Asy (Figure 2)	1	49	120095	Screw-Hx M5 x 20 ST	2
3	-- --	Chain (See Page 9)	1	50	215563	Kit-Fan Housing/Grommet	1
4	-- --	Bar (See Page 9)	1	51	213542	. Hose-Fuel	1
5	93148	Spacer-Bar Pad	1	52	215562	. Grommet	1
6	215695-26	Screw-Hx Hd M5 x 50 St (Sems)	1	53	94501	. Nut-Hx M5 x 8	1
7	120028	Screw-Hx Hd M6 x 20	1	54	94302	Clip-Spring	1
8	93021-01	Lever-Wraparound	1	55	92747	Flange-Carburetor Mounting	1
9	213278 ①	Kit-Clutch Assembly	1	56	213211	Kit-Carburetor Boot	1
10	94244	. Nut-Clutch	1	57	95656	. Eyelet	1
11	94243	. Plate-Dust	1	58	111002	Screw-Pan 10-16 x 1/2	1
12	94242	. Rotor-Clutch	1	59	93720	Pickup-Fuel	1
13	110957	. Rivet-F1 1/8 x .547	2	60	94491	Seal-Fuel Vent	1
14	85064	. Plate-Shoe Clutch	2	61	93997	Hose-Fuel	1
15	93608	. Spring Assembly-Clutch	1	62	90869	Insert	1
16	213276	. Shoe-Clutch	2	63	216666	Kit-Fuel Tank	1
17	215252 ①	Drum-Sprocket/Bearing Asy	1	64	216098	. Cap Assembly-Fuel	1
18	91222	. Kit-Bearing Clutch	1	65	-- --	Handle Assembly (Figure 5)	1
19	215259	. Washer-Sprocket	1	66	213172	Screw-Hx M6 x 17	2
20	216816	Kit-Frame Assembly	1	67	213021	Washer-Ramp Conical 1/4	2
21	216064	. Bolt-M5 T-Head	1	68	214152	Kit-Top Shroud	1
22	216585	. Nut-Lock M5	1	69	214350	. Insulator	1
23	216064	Bolt-M5 T-Head	1	70	94192	Grommet	1
24	93057	Spacer-Mount	2	71	120034	Nut-Hx M6 x 1	2
25	93152	Link	1	72	213172	Screw-Hx M6 x 17	2
26	110989	Grommet	2	73	213021	Washer-Ramp Conical 1/4	2
27	120045	Washer-M5	2	74	120095	Screw-Wh M5 x 20 ST	1
28	216585	Nut-Lock M5	1	75	214154	Kit-Bottom Shroud	1
29	120036	Screw-Pan Hd M4 x 25	2	76	214350	. Insulator	1
30	215481	Cover Assembly-Air Filter	1	77	110999	Screw-Hx Wh 6-20 x 16 ST	1
31	213118	. Screw-Air Filter Cover	1	78	94540	Rod-Oiler	1
32	215456	Filter-Air	1	79	100001	Washer-Plain 6	1
33	213104	Screw-Special M5 x 50	1	80	216860	Knob-Oiler	1
34	213105	Screw-Pn Hd M5 x 55	1	81	93634-01	Spring-Compression	1
35	213411	Plate-Choke	1	82	120095	Screw-Hn M5 x 20 S7	2
36	213420	Spacer-Choke Plate	1	83	93274	Cap-Oil	1
37	215455	Bracket-Choke	1	84	216696	Tank Assembly-Oil	1
38	215482	Airbox Assembly	1	85	92465	. Pickup-Oil	1
39	-- --	Carburetor Assembly (Fig. 3)	1	86	93998	. Spring-Oil Hose	1
40	120096	Screw-Hex M5 x 55 ST	1	87	94405	. Hose-Pickup	1
41	120098	Screw-Hex M5 x 18	1	88	-- --	Powerhead Assembly (Figure 4)	1
42	216485	Housing Assembly-Starter	1	89	219058	Label-Safety	1
43	213257	Drum/Rope Assembly-Starter	1	90	218578	Label-Eager Beaver	1
44	83203	. Rope	1	91	218558	Label-Instruction	1
45	83078	Spring-Starter Rewind	1	92	218559	Label-Name E.B. 2.1	1
46	91255	Kit - Starter Handle	1	93	-- --	Label-Identification	1
46A	105490	. Washer - Starter Handle	1				
47	110041	Screw-Pan 8-32 x .50	1				

① CLUTCH DRUM - If the brake band contact surface of the clutch drum shows sign of scoring or grooving, it MUST be replaced. See Item No. 2, Figure 2.

# Figure 2 CHAIN BRAKE ASSEMBLY

EAGER BEAVER™ 2.1



ITEM NO.	PART NUMBER	DESCRIPTION	UNITS PER ASY.
	216409	Chain Brake Assembly	1
1	111047	. Screw-Fil Hd 8-32 x 5/8	1
2	94709	① . Band-Brake	1
3	215758	. Kit-Latch	1
4	-- --	. Spring-Compression	1
5	93602	. Pivot-Latch	1
6	216549	. Pivot-Lever	1
7	93159	. Lever-Actuating	1

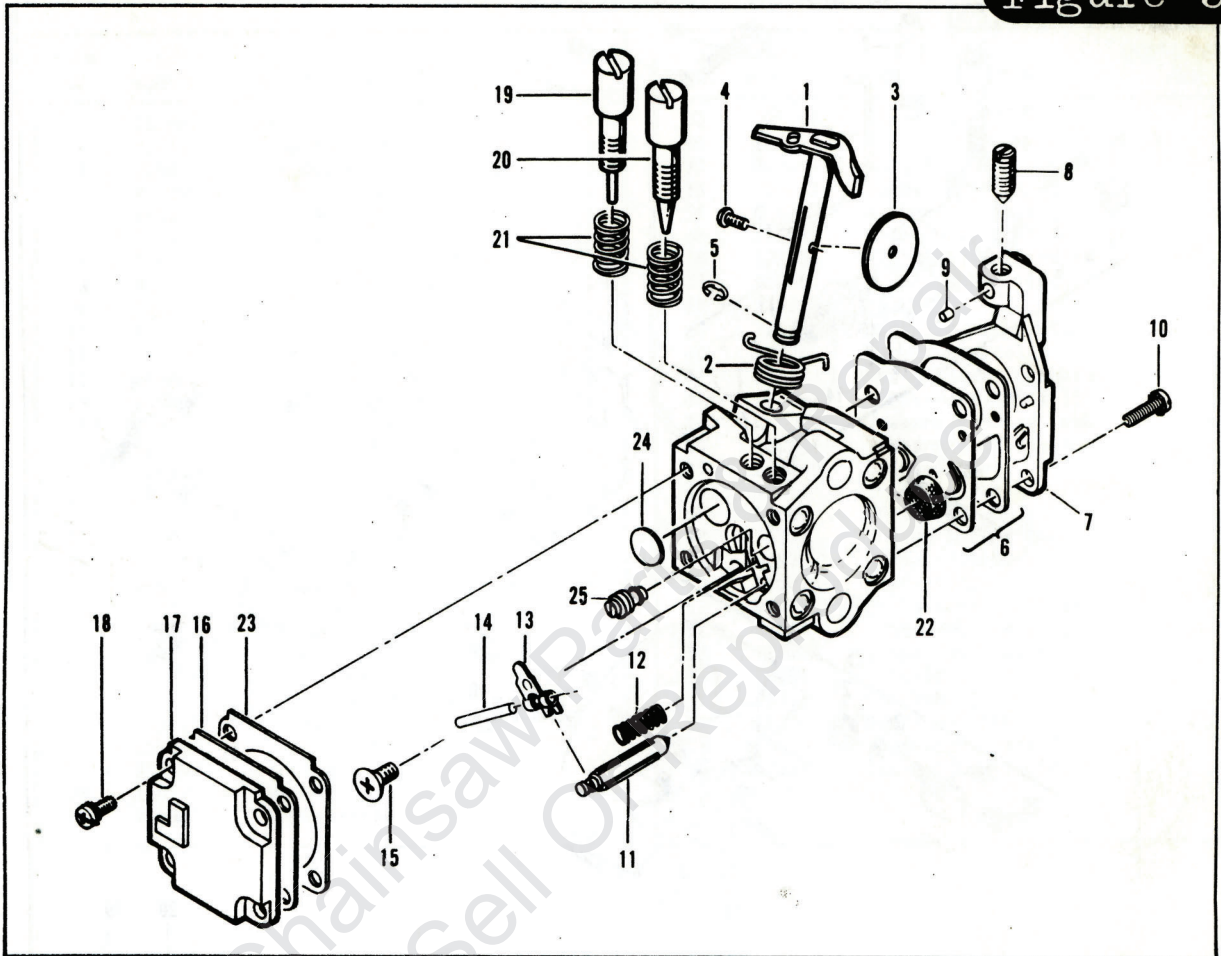
ITEM NO.	PART NUMBER	DESCRIPTION	UNITS PER ASY.
8	214368	. Bearing-Roller	1
9	213907	. Pin-Roller	1
10	90658	. Screw-Adjusting	1
11	110907	. Ring-Retaining	1
12	84929	. Nut-Bar Adjusting	1
13	216411	. Housing-Brake	1
14	93528-01	Cover-Auto Sharp	1

① BRAKE BAND - Inspect the brake band for excessive wear. If the brake band is found to be worn to a thickness of .021" or thinner, at any point along its entire length, it MUST be replaced. See Item No. 17, Figure I.



CARBURETOR ASSEMBLY

Figure 3



ITEM NO.	PART NUMBER	DESCRIPTION	UNITS PER ASY.
1	94496	Carburetor Assembly (Zama)	1
2	-- --	. Shaft Asy-Throttle	1
3	-- --	. Spring-Throttle	1
4	-- --	. Screw-Plate (M3)*	1
5	-- --	"E" Ring	1
6	-- --	. Kit-Diaphragm & Gaskets	1
7	-- --	. Cover Asy-Pump	1
8	-- --	.. Screw-Idle Speed	1
9	-- --	.. Insert-Friction	1
10	-- --	. Screw-Pump Cover (M4)*	1
11	-- --	. Needle-Inlet	1
12	-- --	. Spring-Lever	1
13	-- --	. Lever-Inlet Needle	1

ITEM NO.	PART NUMBER	DESCRIPTION	UNITS PER ASY.
14	-- --	. Pin-Lever	1
15	-- --	. Screw-Lever Pin (M3)*	1
16	-- --	. Diaphragm Asy-Metering	1
17	-- --	. Cover-Diaphragm	1
18	-- --	. Screw-Diaphragm Cover(M3)*	4
19	-- --	. Screw-Idle Adjust	1
20	-- --	. Screw-Main Adjust	1
21	-- --	. Spring-Needle	2
22	-- --	. Screen-Filter	1
23	-- --	. Gasket-Metering Diaphragm	1
24	-- --	. Welch Plug	1
25	-- --	. Orifice-Main Fuel	1

\* The "M" denotes metric screw size.

Contained in Repair Kit, P/N 217081.

Contained in Gasket/Diaphragm Kit, P/N 217089.

Contained in Needle Kit, P/N 216804.



# Figure 4 POWERHEAD ASSEMBLY

EAGER BEAVER™ 2.1

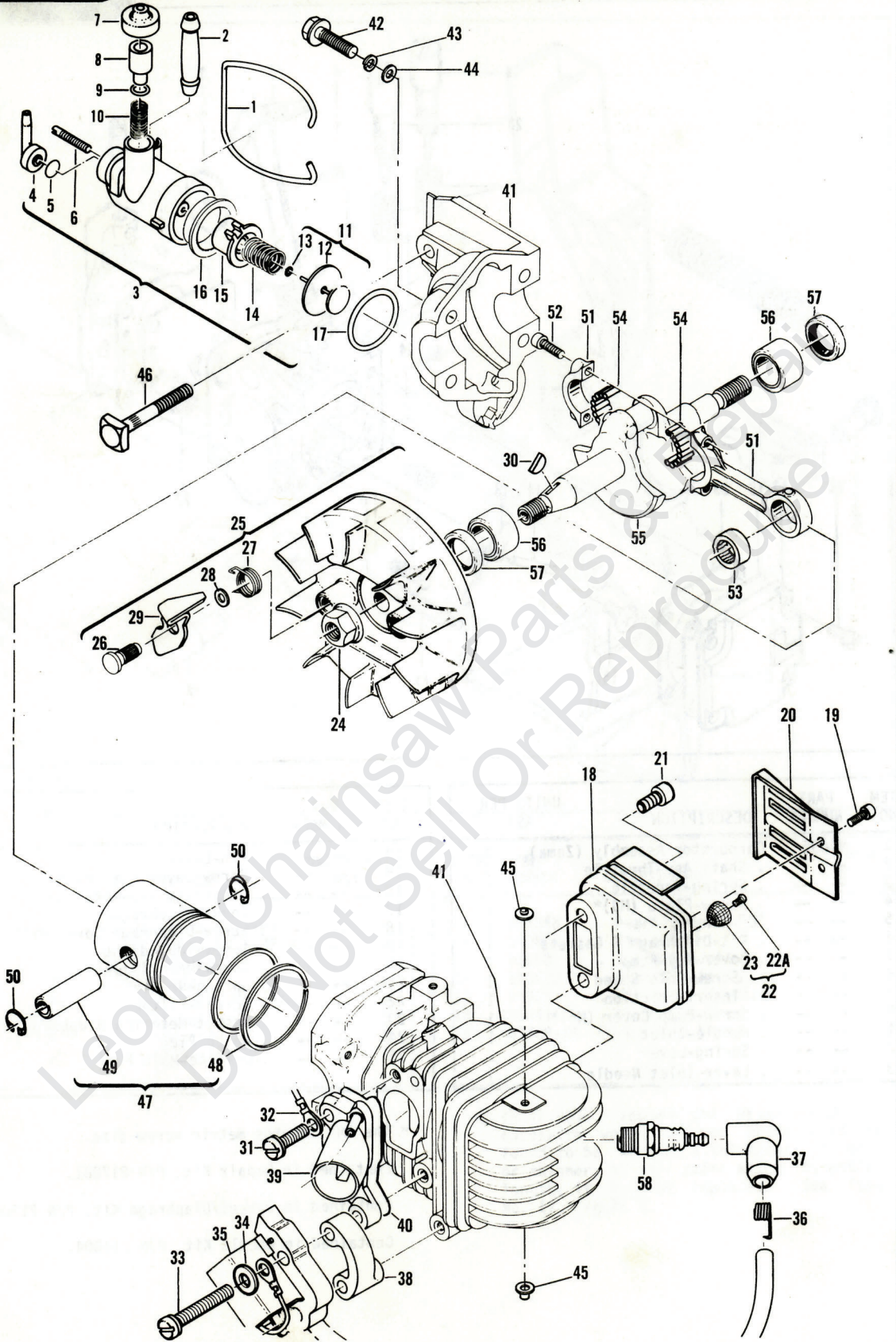




FIGURE 4 POWERHEAD ASSEMBLY

ITEM NO.	PART NUMBER	DESCRIPTION	UNITS PER ASY.	ITEM NO.	PART NUMBER	DESCRIPTION	UNITS PER ASY.
1	93150	Bail	1	30	102164	Key-Flywheel	1
2	217168	Connector-Outlet	1	31	120027	Screw-Pan Hd M5 x 18 (Sems)	1
3	216424	Pump Assembly-Chain Oiler	1	32	93514-01	Wire Assembly-Ground	1
4	215196	. Connector-Hose	1	33	120112	Screw-Skt M5 x 40	2
5	94115	. Valve-Oiler	1	34	216683	Washer-Special	2
6	217765	. Screw-Oiler Adjustment	1	35	219215	Electronic Ignition Assembly	1
7	215151	. Cap-Oil Pump	1	36	102556	. Connector-Spark Plug	1
8	93301	. Plunger-Oil Pump	1	37	95266	. Boot-Spark Plug	1
9	105614	. "O" Ring-.239 x .070	1	38	214356	Spacer	1
10	93632	. Spring	1	39	215601	Manifold-Carburetor	1
11	-- --	. Piston Assembly-Oiler	1	40	92778	Gasekt-Manifold	1
12	216421	. Ring-Oil Pump Piston	1	41	215943	Kit-Cylinder/Crankcase	1
13	105603	. "O" Ring-.114 x .070	1	42	213166	. Screw-Hex M6 x 16	4
14	83891	. Spring-Return	1	43	105043	. Washer-Spring Lock	4
15	216423	. Sleeve-Oil Pump	1	44	102523	. Washer-1/4 Plain	4
16	216422	. Eyelet	1	45	214350	. Insulator	2
17	110653	"O" Ring	1	46	92777	. Bolt - Bar	1
18	215411	Muffler/Deflector Assembly	1	47	94660	Piston Assembly	1
19	110681	. Screw-Skt Hd 10-24 x 1/4	2	48	94136	. Ring Set-Piston	1
20	92961	. Deflector-Exhaust	1	49	92836	. Pin-Piston	1
21	215394	. Screw-Special M6	2	50	111026	. Rin-Snap	2
22	214204	Kit-Spark Arrester Screen	1	51	94135	Connecting Rod Assembly	1
22A	101987	. Screw-Rd 6-32 x .25	1	52	94654	. Screw-Connecting Rod	2
23	83407	. Screen-Spark Arrester	1	53	110984	. Bearing-Needle	1
24	216646-26	Nut-Hex Flange M8 (Torque 190-200 inch pounds)	1	54	68095	. Roller-Needle (Set of 20)	1
25	219211	Flywheel/Pawl Assembly	1	55	92750	Crankshaft	1
26	216984	. Pin-Starter Pawl	2	56	213282	Bearing-Crankshaft	2
27	216982	. Spring-Starter Pawl	2	57	83859	Seal-Crankshaft Oil	2
28	93469	. Washer	2	58	62345	Spark Plug-AC-CS45T	1
29	216983	. Pawl-Starter	2				

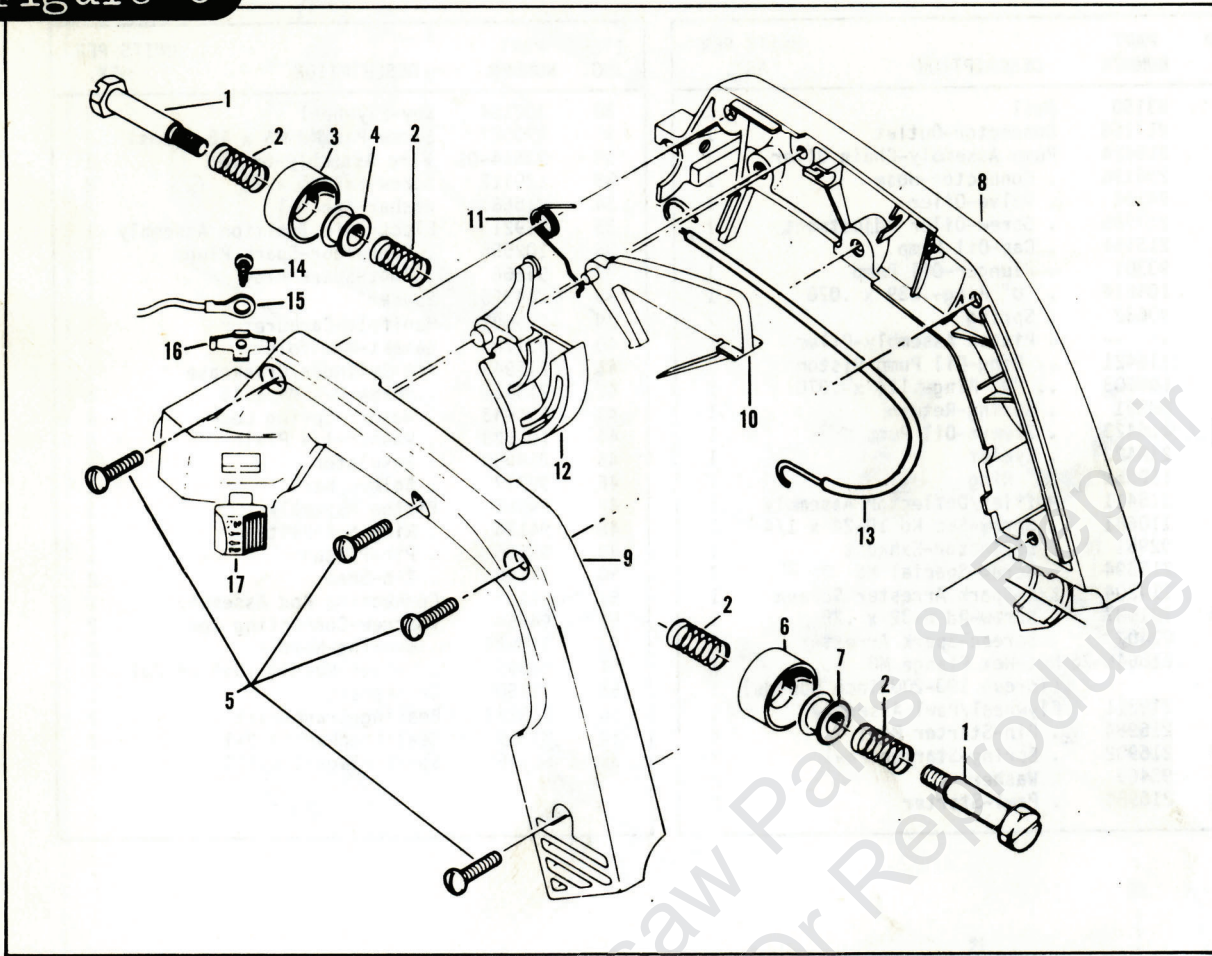
Leon's Chainsaw Parts  
Do Not Sell



Figure 5

HANDLE ASSEMBLY

EAGER BEAVER™ 2.1



ITEM NO.	PART NUMBER	DESCRIPTION	UNITS PER ASY.
1	93529	Bolt-Shoulder	2
2	93530-01	Spring-Mount	4
3	92704	Mount	1
4	94038	Hub-Mount	1
5	213230	Handle Assembly	1
5	111032	. Screw-Ph 10-16 x .625	4
6	92704	. Mount	1
7	94038	. Hub-Mount	1
8	213229	. Handle-Right Half	1
9	213228	. Handle-Left Half	1

ITEM NO.	PART NUMBER	DESCRIPTION	UNITS PER ASY.
10	93310	. Trigger-Safety	1
11	93515	. Spring-Trigger	1
12	213232	. Trigger-Throttle	1
13	213234	. Wire Assembly-Throttle	1
14	110706	. Screw-Pan Hd 8-18 x 1/2	1
15	93505-01	. Wire Assembly-Stop Switch	1
16	62451	. Contact-Switch	1
17	68846	. Button-Start/Stop Switch	1



# EAGER BEAVER™ 2.1

# Torque Chart

DESCRIPTION	SCREW SIZE	TORQUE IN/LBS	DESCRIPTION	SCREW SIZE	TORQUE IN/LBS
* Spark Plug	14 mm	120	Bottom Shroud to Top Shroud	5 mm	40-50
* Conn Rod	6-40	35-40	Starter, Fan Housing to Top Shroud	5 mm	35-40
*Crankcase to Cyl.	5 mm	70-80	Starter to Fan Housing(1)	5 mm	35-40
*Flywheel Nut	8 mm	200-220	Manual Oiler Knob	6-20	8-10
*Clutch Nut	9 mm	160-170	Front Handle to Rear Handle	4 mm	15-20
*Muff./Shoulder Bolts	6 mm	70-80	Handle Mount Bolts (2)	6.3 mm	65-75
Muffler Cover-Louvre	10-24	40-45	Carburetor to Flange	5 mm	30-40
Carburetor Insulator	5 mm	40-50	Link to Front Hand and Starter Housing (2)	5 mm	35-40
Lamination Gap		.011-.015	Auto Sharp Bracket	5 mm	35-40
Lamination Screws	5 mm	70-80			
*Top Shroud to Cyl. (2)	6 mm	90-100			
*Bottom Shroud to Cyl(2)	6 mm	90-100			
Fan Housing, Oil Tank to Shrouds	5 mm	40-50			

(\*) Hand Torque

# Tools & Accessories

PART NUMBER	DESCRIPTION	PART NUMBER	DESCRIPTION
214207	Spike (with Spacer-Bar Pad)	68917	Plate - Adaptor Exhaust
93148	Spacer - Bar Pad	85229	Kit - Pressure Test
93797	Wrench - Screwdriver	215432	Tool - Pressure Test
216063	Key - Socket 5/32	63094	Driver - Piston Pin
215131	Lubri-Gun	67537	Loctite - 10cc Bottle
91226	Wrench - Flywheel Holder	69794	Loctite - 6 oz.
110706	Tool - Handle/Throttle Trigger Screw	110083	R.T.V. Sealant - Tube
214212	Kit - Tool	94364	Kit - Carrying Case (16")
94415	Adaptor - Pressure Test Intake (Cyl)	214202	. Scabbard (16")
94416	Adaptor- Pressure Test Intake(Airbox)		

# Bar & Chain Combination

PART NUMBER	BAR DESCRIPTION	PART NUMBER	CHAIN DESCRIPTION	FILE PLATE PART NUMBER	ROUND FILE PART NUMBER
① 96393	Mini Pro 16"	96393	MP370GLX	219131	214217
214236	Mini Pro 16"	214925-12	MP370GLX	219131	214217

① This kit features a low kickback saw chain and laminated sprocket tip bar combination.

# Service Specifications

Displacement . . . . .	35 cc (2.1 cu. in.)	Fuel Type . . . . .	Regular Grade Leaded
Bore and Stroke . . . . .	38 mm x 30.5 mm (1.5 in. x 1.201 in.)	Fuel/Oil Mixture . . . . .	40:1 w/McCulloch Oil
Bearings . . . . .	Main: Needle	Filtering System, Fuel	Enclosed Felt Fuel Filter
Intake System . . . . .	3rd Port	Filtering System, Air	Felt Air Filter
Fuel Tank Capacity . . . . .	330 cc (11.2 oz.)	Lamination Gap . . . . .	0.3 to 0.4 mm (.011 to .015 in.)
Chain Oiler Capacity . . . . .	100 cc (3.4 oz.)	Timing . . . . .	26° B.T.D.C.
Clutch Engaging Speed . . . . .	3800 R.P.M.	Piston Rings . . . . .	2 Cast Iron Compression
Idle Speed . . . . .	2700 to 2900 R.P.M.	Weight: . . . . .	4.49 kg (9.9 lbs.)
Ignition . . . . .	Electronic		
Carburetor . . . . .	Diaphragm Type, 2-needle Adjustable		





● MANUFACTURING ● SALES ● SERVICE ●

**McCULLOCH**  
CORPORATION

900 Lake Havasu Ave.  
Lake Havasu City, AZ 86403-2891

FOR SERVICE-RELATED PROBLEMS,  
REPAIR OR MAINTENANCE  
TAKE YOUR UNIT TO THE NEAREST  
AUTHORIZED McCULLOCH SERVICING  
DEALER LISTED UNDER SAWS IN YOUR  
TELEPHONE DIRECTORY YELLOW PAGES.

If additional assistance is required, call this toll-free hot-line:  
(800) 423-6302

Arizona residents call collect (602) 453-3681