

# ILLUSTRATED PARTS LIST

## DOUBLE EAGLE™ 80 CHAIN SAW

MODELS	SERIAL NUMBER PREFIX
600155D	11-



McCulloch Chain Saws are identified by a model number (in this instance 600155) followed by a suffix number (04). Suffix numbers denote variations in parts or assemblies used in the manufacture of this product.

Part numbers listed in this I.P.L. which have a circled number ② or numbers preceding the description, are used only on the model or models identified by a circled number ② or numbers.

Part numbers which have one or more dots (.) preceding their descriptions may be ordered individually, but they are also included in the kit or assembly whose description begins directly above the dot(s).

The policy of McCulloch Corporation is one of continual improvement in design, manufacturing and engineering advancement wherever possible to assure still finer power tools. Hence, specifications, equipment, colors, design and manufacturer's suggested list prices are subject to change without notice and McCulloch Corporation reserves the right to make such changes without prior notification or obligation to backfit or supply backfit components for units previously shipped from the factory.

### - CONTENTS -

	Page
Figure 1. General . . . . .	2
Figure 2. Bar/Chain/Chain Sharpening Tools	3
Figure 3. CHAIN BRAKE Assembly. . . . .	4
Figure 4. Fan Housing & Starter Asys . . . . .	5
Figure 5. Accessories . . . . .	5
Figure 6. Service Specifications. . . . .	5
Figure 7. Fuel Tank Assembly. . . . .	6
Figure 8. Carburetor Assembly . . . . .	7
Figure 9. Powerhead & Oiler Assemblies. . . . .	8

**MARCH 1987**



# Figure 1 GENERAL ASSEMBLY

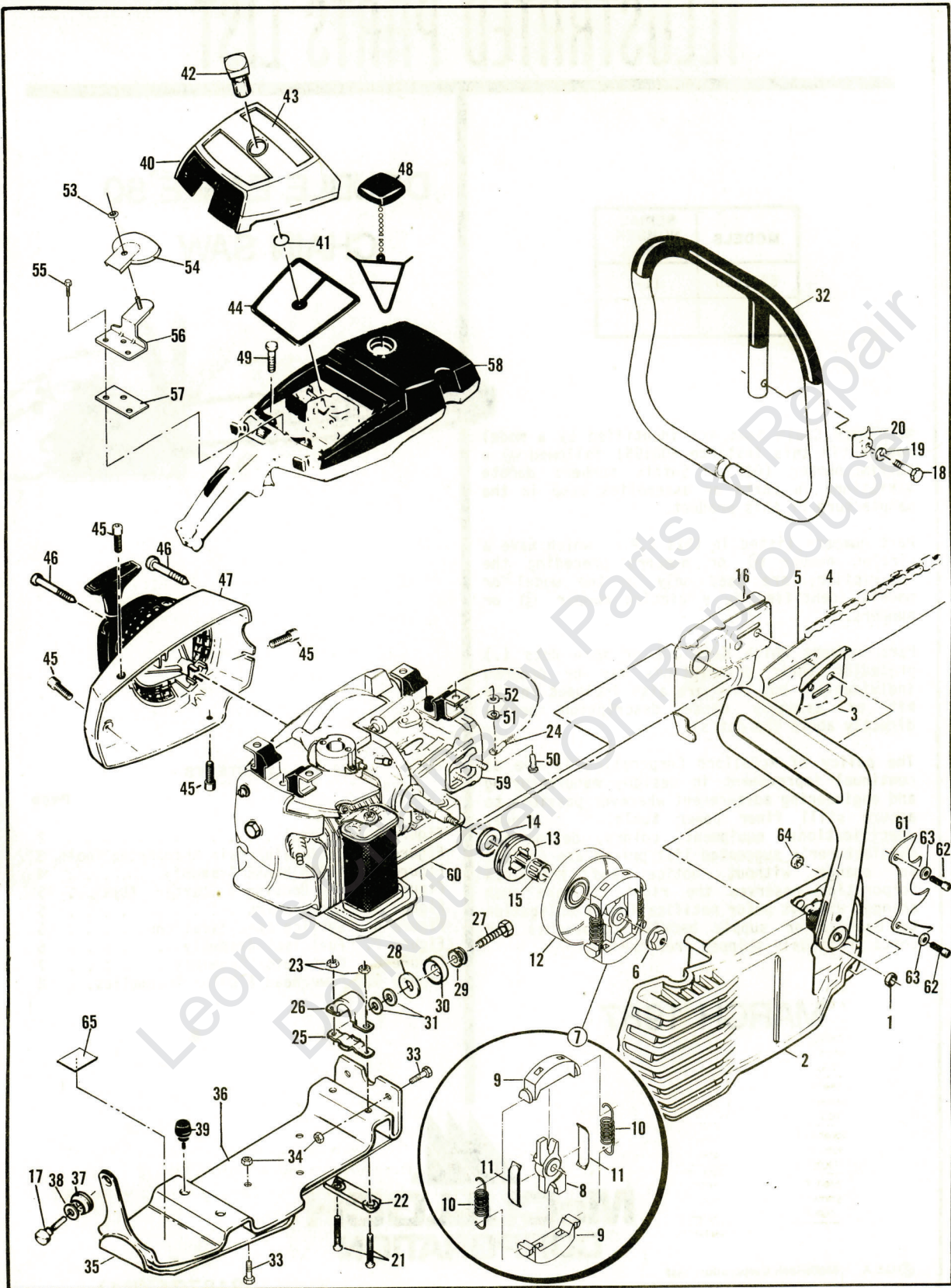


FIGURE 1 GENERAL ASSEMBLY

ITEM NO.	PART NUMBER	DESCRIPTION	UNITS PER ASY.	ITEM NO.	PART NUMBER	DESCRIPTION	UNITS PER ASY.
1	216645	Nut - M8 Hx Flange	2	34	216649	Nut - Hx Lock 10-24	5
2	Fig. 3	CHAIN BRAKE Asy	1	35	216103	Shield - Frame Brace	1
3	64325	Plate - Bar Guide	1	36	216090	Brace - Frame	1
4	Fig. 2	Chain Assembly	1	37	93032	Grommet - Frame Brace	1
5	Fig. 2	Bar Assembly	1	38	214764	Washer	1
6	86113	Nut - Hx 3/8-24 Left Hand (200-210 in. lb. torque)	1	39	89403	Bumper - Lower	2
7	214301	Clutch Assembly	1	40	95418	Cover Assembly - Air Cleaner	1
8	214300	. Rotor - Clutch	1	41	110565	. Ring Retaining	1
9	67233	. Kit - Clutch Shoe	1	42	95420	. Knob Cover	1
10	83223	. Spring - Clutch	2	43	218762	Label-Warning	1
11	64583	. Retainer - Clutch Spring	2	44	215681	Filter - Air	1
12	95166	Kit-Drum & Sprocket 7T .375P	1	45	216670	Screw - Skt 10-24 x .50 (40-45 in. lb. torque)	4
13	86344	. Sprocket - 7T .375P Rim	1	46	216624	Screw - Oval 8-32 x 2.26 (35-40 in. lb. torque)	3
14	86958	. Washer - Shim	1	47	Fig. 4	Fan Housing/Starter Asy	1
15	110971	Bearing - Sprocket	1	48	216053	Cap Assembly - Fuel	1
16	84978-01	Shield - Sawdust	1	49	110746	Screw Hx hd 10-24 x .50 Rear Mt (55-60 in. lb. torque)	2
17	213055	Screw - 10-24 x 1.50 (55-60 in. lb. torque)	1	50	216644	Screw - Hx hd 1/4-20 x 5/8 (110-120 in. lb. torque)	2
18	216638	Screw - Hx hd 1/4-20 x 1-1/2 (90-100 in. lb. torque)	1	51	216542	Lockwasher - .250	2
19	216542	Lockwasher - .250	1	52	216646	Washer - .250	2
20	216639	Clamp - Frame	1	53	105603	"0" Ring - .114 x .070	1
21	103353	Screw - Hx hd 10-24 x 1.50	2	54	218612	Shield - Spit Back	1
22	95679	Clamp - Frame	1	55	110959	Screw Hex 8-32 x .50 (35-40 in. lb. torque)	3
23	216682	Nut - Hx Lock 10-24	2	56	218611	Bracket - Air Filter	1
24	83828-01	Wire Assembly - Ground	1	57	218598	Plate - Spacer	1
25	92701	Clamp-Lower Mount Bottom	1	58	Fig. 7	Fuel Tank Assembly	1
26	92700	Clamp-Lower Mount top	1	59	Fig. 9	Powerhead/Oiler	1
27	216648	Screw - Hx hd 1/4-20 x 2 90-100 in. lb. torque	1	60	Fig. 9	Muffler Assembly	1
28	216647	Washer - Plain	1	61	93668	Spike	1
29	84661	Grommet	1	62	213042	Screw - Skt 10-24 x .62	2
30	85898	Mount - Lower	1	63	216683	Washer - Special 10	2
31	95636	Washer - 1/4	2	64	216682	Nut - Hx Lock 10-24	2
32	95514	Frame & Grip Assembly	1	65	219058	Label - Safety	1
33	216634	Screw - Pn 10-24 x .50	5				

Bar/Chain/Chain Sharpening Tools **Figure 2**

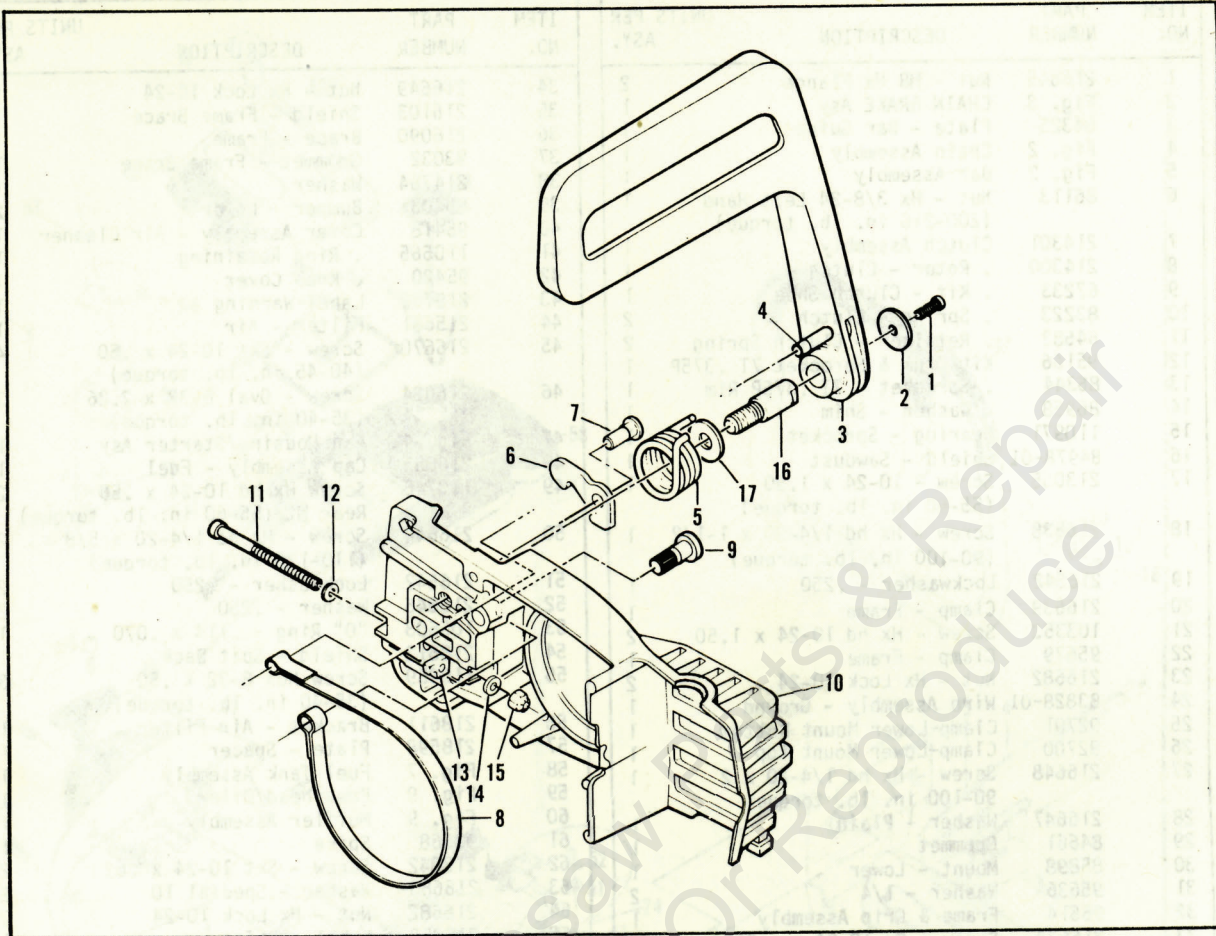
94074-00	16" Speed Mac Bar	86847-00	28" Speed Mac Bar
86830	Replacement-Sprocket Tip	86830	Replacement-Sprocket Tip
89974-12	SPR370GX Chain 60 CL	89984-12	SPR370GX Chain 92 CL
94074-05	16" Speed Mac Bar	86847-05	28" Speed Mac Bar
219975	Replacement-Sprocket Tip	219975	Replacement Sprocket Tip
89974-12	SPR370GX Chain 60 CL	89984-12	SPR370GX Chain 92 CL
93778-00	20" Speed Mac Bar	89505	28" Mac 10 Bar
86830	Replacement-Sprocket Tip	89985-12	SPR370GX Chain 93 CL
89979-12	SPR370GX Chain 71 CL		
93778-05	20" Speed Mac Bar	91284	33" Speed Mac Bar
219975	Replacement-Sprocket Tip	86830	Replacement-Sprocket Tip
89979-12	SPR370GX Chain 71 CL	92101-12	SPR370GX Chain 106 CL
86846-00	24" Speed Mac Bar	91284-01	33" Speed Mac Bar
86830	Replacement-Sprocket Tip	219975	Replacement-Sprocket Tip
89981-12	SPR370GX Chain 81 CL	92101-12	SPR370GX Chain 106 CL
86846-05	24" Speed Mac Bar	<b>SHARPENING TOOLS FOR GX CHAIN</b>	
219975	Replacement-Sprocket Tip	218738	File Plate
89981-12	SPR370GX Chain 81 CL	219161*	7/32" (5.5mm) Round File
		56698-23**	7/32" (5.5mm) Round File

89503	20" Mac 10 Bar
88173-14	PM370G Chain 71 CL
86846	24" Speed Mac Bar
86830	Replacement-Sprocket Tip
88175-14	PM370G Chain 81 CL
89505	28" Mac 10 Bar
93552-14	PM370G Chain 93 CL
<b>SHARPENING TOOLS FOR G CHAIN</b>	
219161*	7/32" (5.5mm) Round File
56698-23**	7/32" (5.5mm) Round File

NOTE: The Part Number of the Guide Bar is stamped on the bar. Identify the Part Number of the bar before ordering a replacement sprocket tip. Only the Speed Mac Guide Bars are equipped with a replaceable sprocket tip.

\* Round Files Twin Pack \*\* Round Files Dozen Pack

**Figure 3** CHAIN BRAKE ASSEMBLY

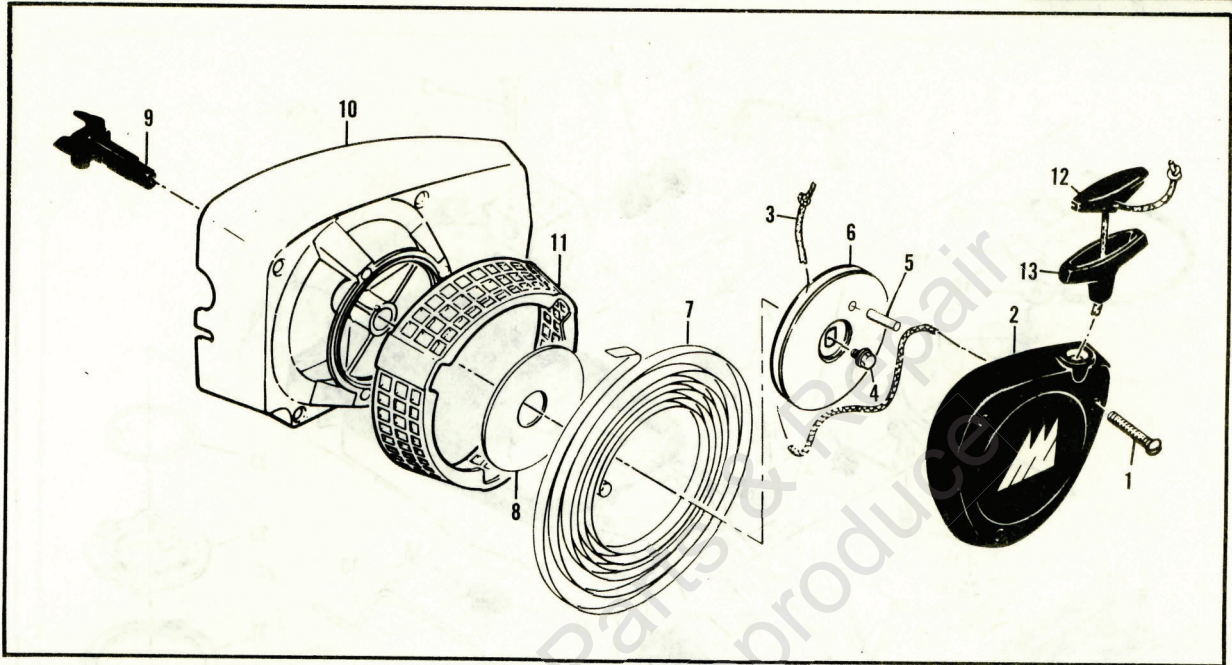


ITEM NO.	PART NUMBER	DESCRIPTION	UNITS PER ASY.
	217695	CHAIN BRAKE® Assembly	1
1	216634	. Screw-Pan hd 10-24 x .50	1
2	216633	. Washer .210 I.D.	1
3	215911	. Lever Assembly	1
4	214366	. Pin Assembly-Roller	1
5	93085	. Spring-Brake	1
6	217235	. Latch - Chain Brake	1
7	94144	. Pivot-Latch	1
8	93081	. Band-Brake	1

ITEM NO.	PART NUMBER	DESCRIPTION	UNITS PER ASY.
9	93082	. Pin-Band Anchor	1
10	215699	. Housing - Brake	1
11	216636	. Screw - Fil hd 10-24 x 2.75	1
12	216635	. Washer .203 I.D.	1
13	61705	. Nut-Bar Adjusting	1
14	100002	. Washer - #10	1
15	102067	. Nut-Hx 10-24	1
16	91246	. Pin-Lever Pivot	1
17	91245	. Washer - Thrust	1

# FAN HOUSING & STARTER

**Figure 4**



ITEM NO.	PART NUMBER	DESCRIPTION	UNITS PER ASY.
	215706	Fan Housing/Starter Asy	1
1	216625	. Screw-Oval 10-24 x 1.25	3
2	215707	. Cover Assembly-Starter	1
3	87670	. Rope-Starter	1
4	110928	. Screw-Hx hd 10-24 x .50	1
5	105841	. Pin-Roll	1
6	87689	. Drum-Starter	1

ITEM NO.	PART NUMBER	DESCRIPTION	UNITS PER ASY.
7	87680	. Spring-Rewind	1
8	86053	. Shield - Spring	1
9	95412	. Shaft - Starter	1
10	215705	. Fan Housing	1
11	214192	. Guard - Sawdust	1
12	214699	Insert-Handle	1
13	93137	Handle-Starter	1

## ACCESSORIES

**Figure 5**

PART NUMBER	DESCRIPTION	PART NUMBER	DESCRIPTION
214221	Scrench - 13mm x 5/8	215697	Air Filter - Felt
84453	Kit-Piston Tools	216147	Key-Socket 1/8
63432	Spark Plug	216335	Key-Socket 3/32
62827	Wrench/Screwdriver	216063	Key-Socket 5/32
214194	Metal Lubri-gun	214283	Spark Screen & Cap Asy
214195	Plastic Lube Gun		

## SERVICE SPECIFICATIONS

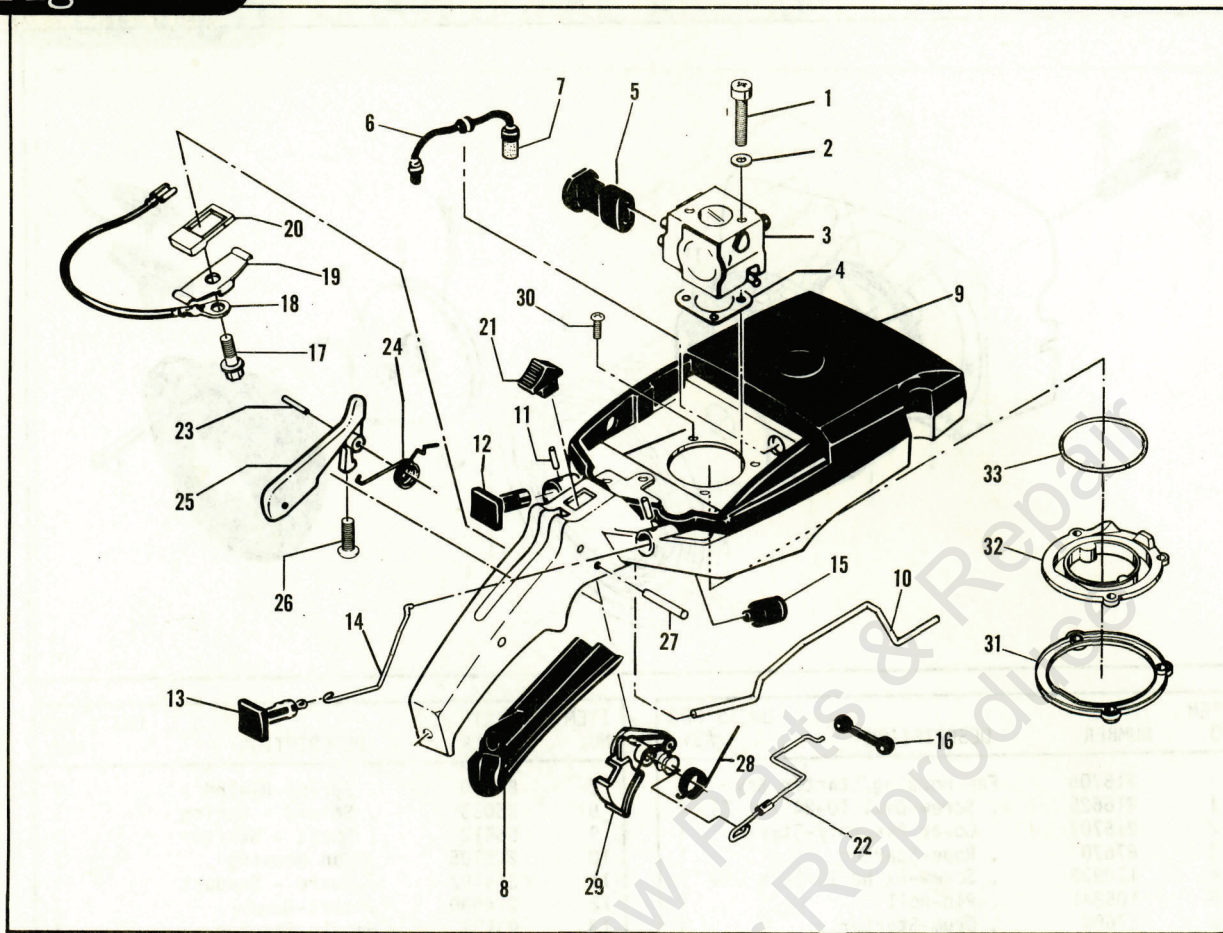
**Figure 6**

DISPLACEMENT . . . . .	5.2 Cubic Inches (82cc)	OIL CAPACITY . . . . .	9.6 Fluid Ounces
BORE/STROKE . . . . .	2.062 x 1.500	FUEL CAPACITY . . . . .	25.6 Fluid Ounces
SPARK PLUG . . . . .	AC-CS42T/Champion - DJ6J	IGNITION . . . . .	Electronic
DRY WEIGHT . . . . .	17.5 Pounds (Power Unit Only)	CYLINDER TYPE . . . . .	Hard Chrome
BAR LENGTH . . . . .	16 Inches to 33 Inches	SPARK PLUG GAP . . . . .	.025 Inch
SPROCKET . . . . .	7-Tooth .375 Pitch Floating Rim	CLUTCH	
		ENGAGEMENT SPEED . . .	2800 to 3000 RPM

Figure 7

FUEL TANK ASSEMBLY

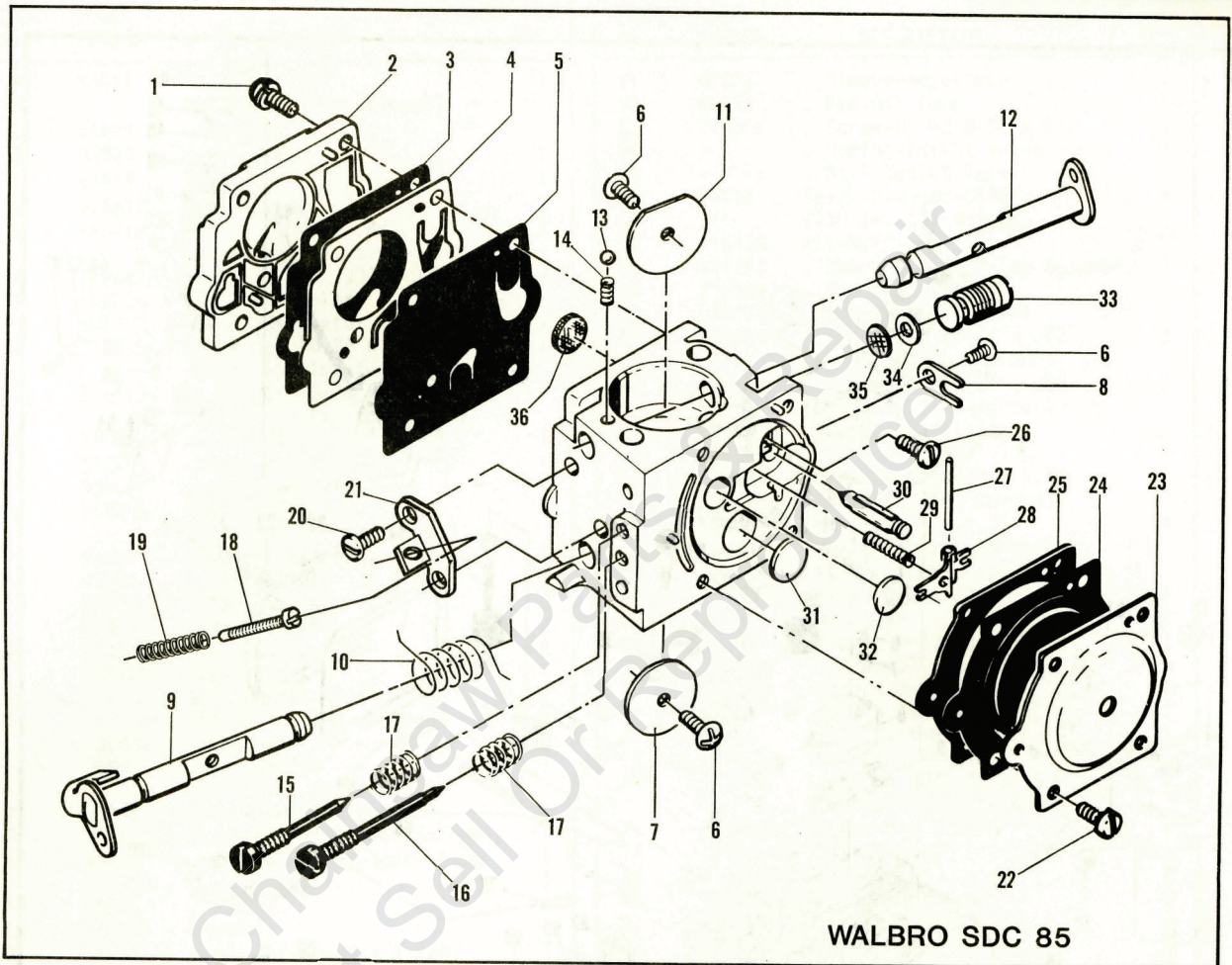
DOUBLE EAGLE™ 80



ITEM NO.	PART NUMBER	DESCRIPTION	UNITS PER ASY.
1	218701	Screw Skt hd 10-24 x 2 (35-40 in. lb. torque)	2
2	110964	Washer-Plain	2
3	Fig. 8	Carburetor Assembly	1
4	86189	Gasket-Carburetor	1
5	218610	Grommet-Mix Adj.	1
6	215708	Hose Assembly-Fuel	1
7	215714	Pickup Assembly-Fuel	1
8	89320	Insert-Handle Grip	1
9	218620	Tank/Control Assembly	1
10	218603	Rod-Oiler	1
11	105673	Pin-Roll .099 x .562	2
12	95615	Button-Oiler	1
13	95614	Button-Choke	1
14	218604	Rod-Choke	1
15	69597	Boot-Control Rod	1
16	69043	Snubber-Rod	1

ITEM NO.	PART NUMBER	DESCRIPTION	UNITS PER ASY.
17	110706	Screw-Pn hd 8-18 x .50	1
18	83661	Wire Assembly-Stop Switch	1
19	62451	Contact-Swtich	1
20	214691	Base-Switch	1
21	68846	Button-Switch	1
22	218605	Rod-Throttle	1
23	105654	Pin-Roll .131 x .875	1
24	92154	Spring-Trigger Release	1
25	94275	Release Assembly-Trigger	1
26	111012	Screw-Pn hd 4-40 x .31	1
27	110378	Pin-Roll .196 x .937	1
28	92152	Spring-Trigger	1
29	218609	Trigger Assembly-Throttle	1
30	215874	Screw M4 x 9.5 Torx	3
31	218599	Clamp Assembly-Boot	1
32	218600	Boot-Fuel Tank	1
33	218601	Ring-Boot	1

# CARBURETOR ASSEMBLY Figure 8



ITEM NO.	PART NUMBER	DESCRIPTION	UNITS PER ASY.
	218616	Carburetor Assembly	1
1	--	.Screw - Pump Cover	4
2	--	.Cover - Pump	1
3	-- ① ②	.Gasket - Cover	1
4	-- ① ②	.Diaphragm - Check Valve	1
5	-- ① ②	.Diaphragm - Fuel Pump	1
6	-- ①	.Screw - Plate	2
7	--	.Plate - Throttle	1
8	--	.Clip - Shaft	1
9	--	.Shaft Asy - Throttle	1
10	-- ①	.Spring - Throttle Shaft	1
11	--	.Plate - Choke	1
12	--	.Shaft Asy - Choke	1
13	-- ①	.Ball - Choke Friction	1
14	--	.Spring - Choke Friction	1
15	-- ①	.Needle - High Speed	1
16	--	.Needle - Low Speed	1
17	-- ①	.Spring - Needle	2
18	-- ①	.Screw - Idle Speed	1

ITEM NO.	PART NUMBER	DESCRIPTION	UNITS PER ASY.
19	--	.Spring - Idle Screw	1
20	--	.Screw - Idle Bracket	2
21	--	.Bracket - Idle	1
22	--	.Screw - Diaphragm Cover	4
23	--	.Cover - Diaphragm	1
24	-- ① ②	.Diaphragm - Metering	1
25	-- ① ②	.Gasket - Diaphragm	1
26	-- ①	.Screw - Lever Pin	1
27	-- ①	.Pin - Lever	1
28	-- ①	.Lever - Metering	1
29	-- ①	.Spring - Lever	1
30	-- ①	.Valve - Needle	1
31	-- ①	.Plug - 3/8"	1
32	-- ①	.Plug - 5/16"	1
33	--	.Valve & Seat Asy	1
34	--	.Washer - Check Valve	1
35	-- ①	.Screen - Check Valve	1
36	-- ①	.Screen - Fuel	1

① Contained in Repair Kit P/N 219247  
 ② Contained in Gasket/Diaphragm Kit P/N 219248

Figure 9 POWERHEAD & OILER

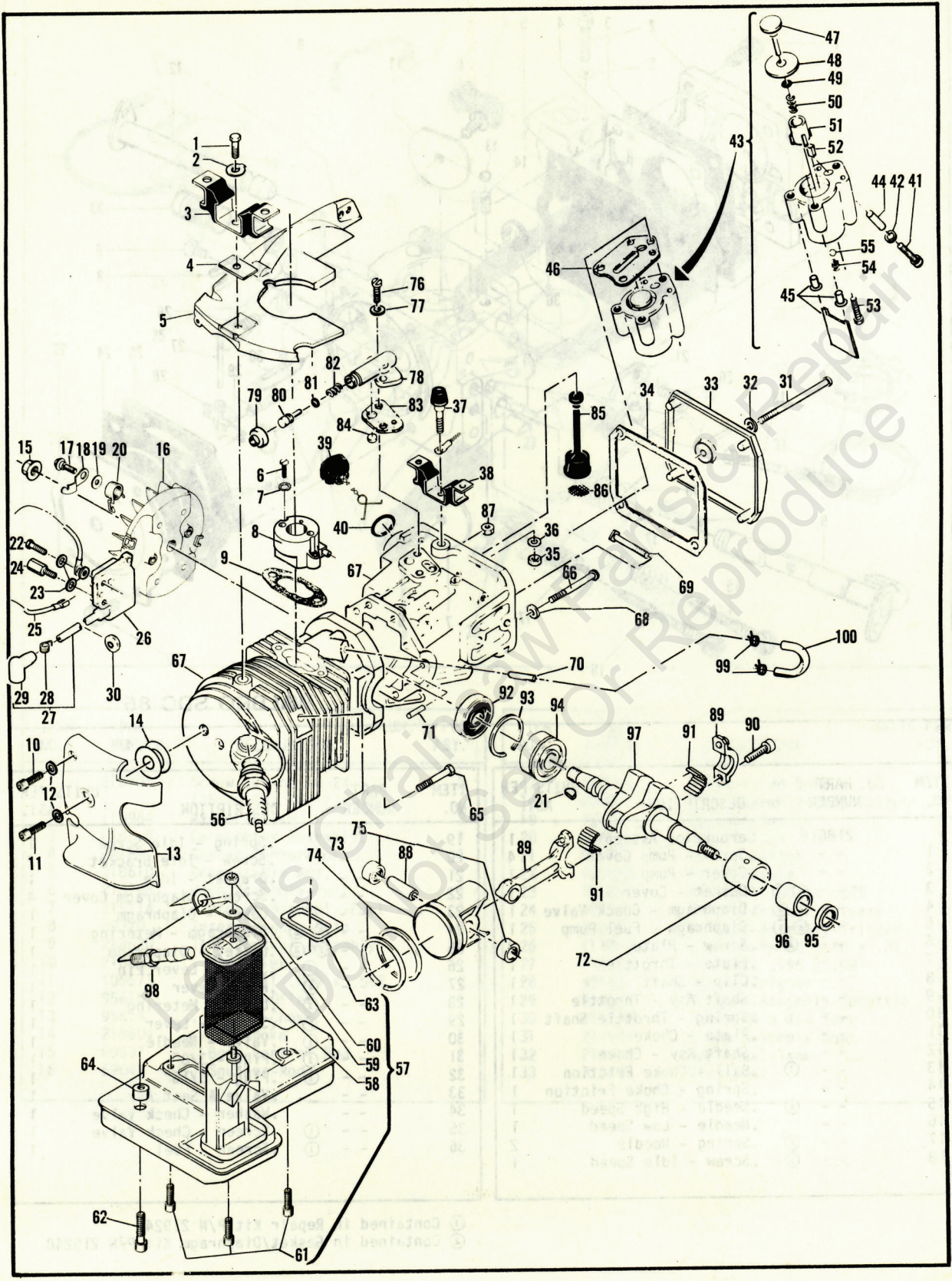
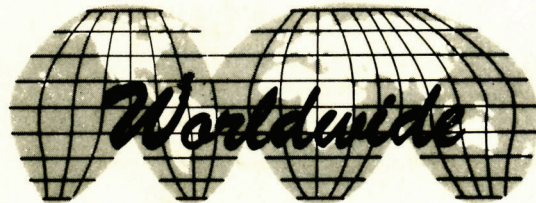




FIGURE 9 POWERHEAD &amp; OILER ASSEMBLIES

ITEM NO.	PART NUMBER	DESCRIPTION	UNITS PER ASY.	ITEM NO.	PART NUMBER	DESCRIPTION	UNITS PER ASY.
1	83811	Screw-Special (90-100 in. lb. torque)	1	51	62227	. Sleeve-Adjustment	1
2	69924	Lockplate	1	52	91259	. Pad-Oil Pump	1
3	93925	Mount-Rear	1	53	110386	. Screw-Hx hd 8-32 x 1	1
4	84619	Insulator	1	54	-- --	. Spring-Outlet Valve	1
5	218617	Shroud-Upper	1	55	-- --	. Ball-Outlet Valve	1
6	110713	Screw 10-24 x .88 (35-40 in. lb. torque)	2	56	63432	Spark Plug-Ac-C542T (120 in. lb. torque)	1
7	216635	Washer-Plain .203.I.D.	2	57	216160	Kit-Muffler	1
8	218708	Insulator-Inlet	1	58	214283	. Spark Screen & Cap Assembly	1
9	88740	Gasket-Insulator	1	59	216087	. Strap-Muffler	1
10	216670	Screw-Skt 10-24 x 1/2 (55-60 in. lb. torque)	1	60	216682	. Nut-Hex Lock 10-24	1
11	216669	Screw-Skt 10-24 x 3/4 (55-60 in. lb. torque)	1	61	104895	. Screw-Skt 10-24 x .62 (65-75 in. lb. torque)	3
12	216643	Washer-#10	2	62	110713	. Screw-Skt 10-24 x .88 (65-75 in. lb. torque)	1
13	218706	Shroud-Rear	1	63	95387	. Gasket-Muffler	1
14	93460	Washer-Insulator	1	64	216047	. Spacer	1
15	110703	Nut-Hex 3/8-24 (265-325 in. lb. torque)	1	65	110644	Screw-Hx hd 8-32 x 1.50 (35-40 in. lb. torque)	1
16	95481	Flywheel Assembly	1	66	62106	Screw-12-24 x 1.75 (70-75 in. lb. torque)	4
17	93464	. Screw-Pawl	2	67	① 215713	Kit-Cylinder-C'case, Piston	1
18	93198	. Pawl-Starter	2	68	111025	. Washer-Sealing	4
19	93469	. Washer-Pawl	2	69	92459	. Bolt-Bar	2
20	214102	. Spring-Pawl	2	70	69600	. Nipple-Pulse line	1
21	100106	Key-Woodruff	1	71	110851	. Pin-Dowel	1
22	110127	Screw-Hx hd 10-24 x .88 (SEMS) (55-60 in. lb. torque)	1	72	87152	. Insert-Bearing	1
23	100002	Washer-#10	3	73	① 92518	. Piston Assembly "A"	1
24	95603	Stud-Special (55-60 in. lb. torque)	1	74	85414	. Ring Set-Piston	1
25	85798	Wire Assembly-Ground	1	75	111021	. Bearing-Needle	1
26	95553	Electronic Ignition Assembly	1	76	110338	Screw-Hx Hd 8-32 x .532 (15-20 in. lb. torque)	2
27	95269	. Wire Assembly-Spark Plug	1	77	110613	Washer-No. 8 Hard	2
28	102556	. . Connector	1	78	84156	Housing-Pump	1
29	95266	. . Boot	1	79	215151	Cap-Housing	1
30	110995	Grommet	1	80	92902	Plunger-Pump	1
31	110291	Screw-Skt 10-24 x 2-5/8 (35-50 in. lb. torque)	1	81	105614	"O" Ring	1
32	110921	Washer-Sealing	1	82	66687	Spring-Pump	1
33	218707	Cover-Oil Tank	1	83	91669	Gasket-Pump	1
34	86306	Gasket-Cover	1	84	91668	Valve-Pump	1
35	101143	Nut-Hx Lock 1/4-20	1	85	91672	Hose-Oil	1
36	102523	Washer-1/4	1	86	51506	.Screen-Hose	1
37	69832	Bumper-Front	1	87	100955	Nut-Hx Lock 8-32	1
38	93926	Mount-Front	1	88	69020	Pin-Piston	1
39	216052	Cap-Oil Tank	1	89	215245	Connecting Rod Assembly	1
40	101148	"O" Ring	1	90	61627-01	.Screw-Connecting Rod (65-70 in. torque)	2
41	110890	Screw-Fil 10-24 x .88 (25-30 in. lb. torque)	1	91	215150	Roller (Set of 11)	2
42	100003	Washer-#10	1	92	61618	Seal-Oil	1
43	215339	Pump Assembly-Pulse	1	93	63464	Ring-Snap	1
44	91774	. Sleeve	1	94	63429-02	Bearing-Ball	1
45	215246	. Kit-Oil Pump Clip	1	95	110260	Seal-Oil	1
46	92874	. . Seal-Pulse Pump	1	96	104357	Bearing-Needle	1
47	214278	. Piston Assembly-Pump	1	97	95386	Crankshaft	1
48	86182	. Ring-Piston	1	98	215673	Valve-Compression Release (110-120 in. lb. torque)	1
49	105603	. "O" Ring	1	99	218614	Clamp-Hose	2
50	60259	. Spring - Piston	1	100	218602	Line-Pulse	1

① Piston/Cylinder/Crankcase Assemblies are furnished in matched sets and are identified by a letter "A", "B", or "C" stamped on both cylinder and piston. Order replacement pistons with the same letter that is stamped on the cylinder. For piston replacement in an unmarked cylinder order Piston Assembly, P/N 92519, identified as "B". For piston replacement in cylinder marked "B" order Piston Assembly, P/N 92519, identified as "B". For piston replacement in cylinder marked "C" order Piston Assembly, P/N 92520, identified as "C".



● MANUFACTURING ● SALES ● SERVICE ●

**McCULLOCH**  
CORPORATION

900 Lake Havasu Ave.  
Lake Havasu City, AZ 86403-2891

FOR SERVICE-RELATED PROBLEMS,  
REPAIR OR MAINTENANCE  
TAKE YOUR UNIT TO THE NEAREST  
AUTHORIZED McCULLOCH SERVICING  
DEALER LISTED UNDER SAWS IN YOUR  
TELEPHONE DIRECTORY YELLOW PAGES.

If additional assistance is required, call this toll-free hot-line:  
(800) 423-6302

Arizona residents call collect (602) 453-3681