

# ILLUSTRATED PARTS LIST

MODELS	SERIAL NUMBER PREFIX	MODELS	SERIAL NUMBER PREFIX
600150-03	13-		
600150-04	13-		
600150-06	13-		

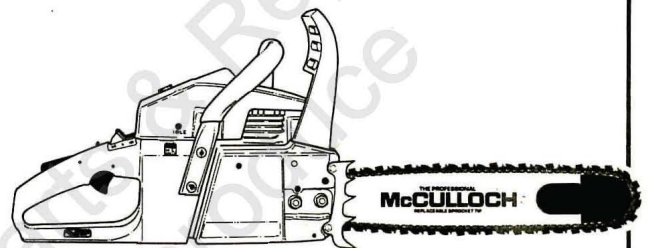
McCulloch Chain Saws are identified by a model number (in this instance 600150) followed by a suffix number (03, 04, etc.). Suffix numbers denote variations in parts or assemblies used in the manufacture of this product.

Part numbers listed in this I.P.L. which have a circled number ① or numbers preceding the description, are used only on the model or models identified by a circled number ① or numbers.

Part numbers which have one or more dots (.) preceding their descriptions may be ordered individually, but they are also included in the kit or assembly whose description begins directly above the dot(s).

The policy of McCulloch Corporation is one of continual improvement in design, manufacturing and engineering advancement wherever possible to assure still finer power tools. Hence, specifications, equipment, colors, design and manufacturer's suggested list prices are subject to change without notice and McCulloch Corporation reserves the right to make such changes without prior notification or obligation to backfit or supply backfit components for units previously shipped from the factory.

## Double Eagle™ 50 CHAIN SAW



### - CONTENTS -

	PAGE
FIGURE 1. General Assembly .....	2
FIGURE 2. Starter Assembly .....	3
FIGURE 3. Chain Brake Assy .....	4
FIGURE 4. Carburetor Assy .....	5
FIGURE 5. Powerhead Assy .....	6
FIGURE 6. Engine Specifications .....	7
FIGURE 7. Bar/Chain/Sprocket .....	7
FIGURE 8. Main Frame Assy .....	8

To answer service-related questions and to solve common consumer problems quickly, call this toll-free hot-line:

(800) 423-6302

If located in Arizona, call collect:  
(602) 453-3681

**OCTOBER 1987**

  
**McCULLOCH**  
**CORPORATION**

© U.S.A. - McCulloch Corporation, 1987

Printed in U.S.A.

**222411**

900 Lake Havasu Avenue, Lake Havasu City, Arizona 86403





**FIGURE 1 GENERAL ASSEMBLY**

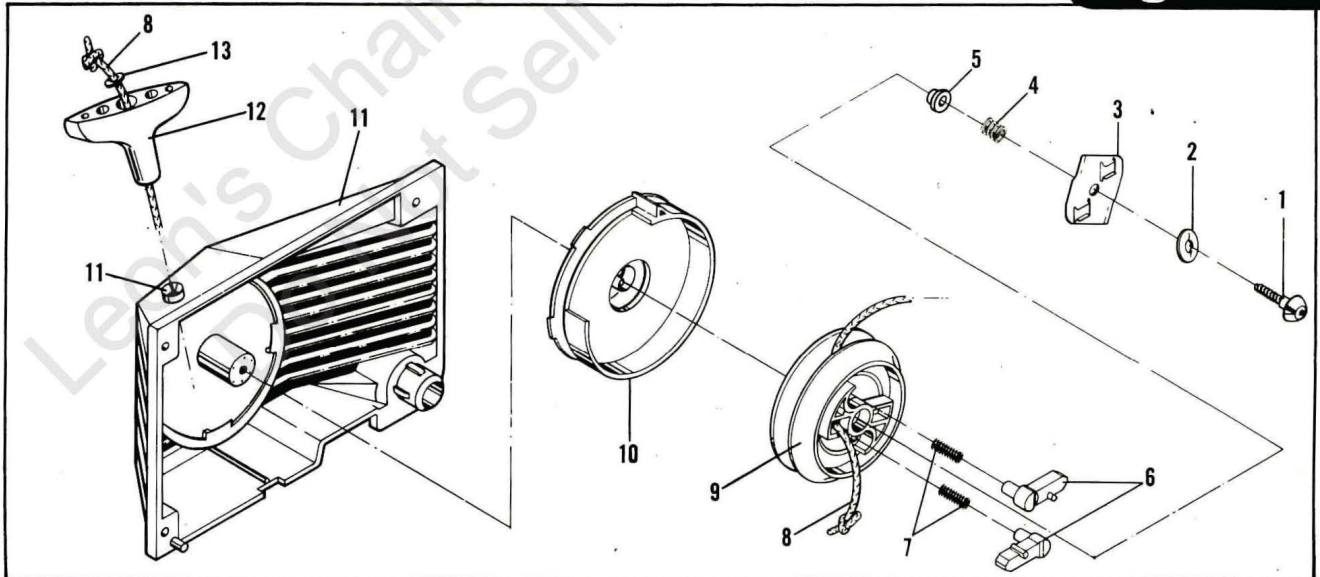
**DOUBLE EAGLE™ 50**

ITEM NO.	PART NUMBER	DESCRIPTION	UNITS PER ASY.
1	218042	Nut-Flange M8	2
2	Fig. 3	Brake Asy-Chain	1
3	Fig. 7	Bar	1
4	Fig. 7	Chain	1
5	217594	Plate-Bar	1
6	217640	Screw-Bar Adjustment	1
7	217479	Nut-Bar Adjustment	1
8	219854	Clutch Asy (3 Shoe)	1
9	-- --	. Plate-Shoe	3
10	-- --	. Spring Asy-Clutch	1
11	-- --	. Rotor-Clutch	1
12	-- --	. Shoe-Clutch	3
13	-- --	. Rivet	6
14	Fig. 7	Drum/Spkt/Bearing Asy	1
15	110971	. Bearing-Needle	1
16	86958	. Shim	2
17	217936	Screw-10-24x.75 (50 in. lb. torque)	4
18	Fig. 2	Starter Assembly	1
19	218840	Baffle-Fan	1
20	222217	Cover Asy-Air	1
21	222206	. Knob	1
22	-- --	. Nut-Press	3
23	-- --	. Plate	1
24	218257-01	Decal-Instruction	1
25	219071	Filter-Air	1
26	219231	Screw-10-24x2.19	2
27	219103	Shield-Spitback	1

ITEM NO.	PART NUMBER	DESCRIPTION	UNITS PER ASY.
28	218757	Spacer-Shield	2
29	Fig. 4	Carburetor	1
30	218723	Box-Air	1
31	218761	Grommet-Throttle/Choke	1
32	91995-01	Grommet-Carburetor Needles	1
33	218922	Bushing-Hose	2
34	217937	Screw-10-24x1 (20 in. lb. torque)	2
35	218809	Eyelet	1
36	218792	Flange-Carburetor Mount	1
37	93998	Spring-Pulse Hose	1
38	218972	Hose-Pulse	1
39	218129	Barb-Pulse Hose	1
40	218768	Shroud-Cylinder	1
41	218780	Boot-Intake	1
42	218371	Carrier-Rear Mount	2
43	218801	Mount-Rear	2
44	218362	Retainer-Rear Mount	2
45	217936	Screw-10-24x.75 Torx (50 in. lb. torque)	4
46	218787	Frame-C	1
47	Fig. 8	Main Frame Assembly	1
48	Fig. 5	Powerhead Assembly	1
49	219058	Label-Safety	1

**STARTER ASSEMBLY**

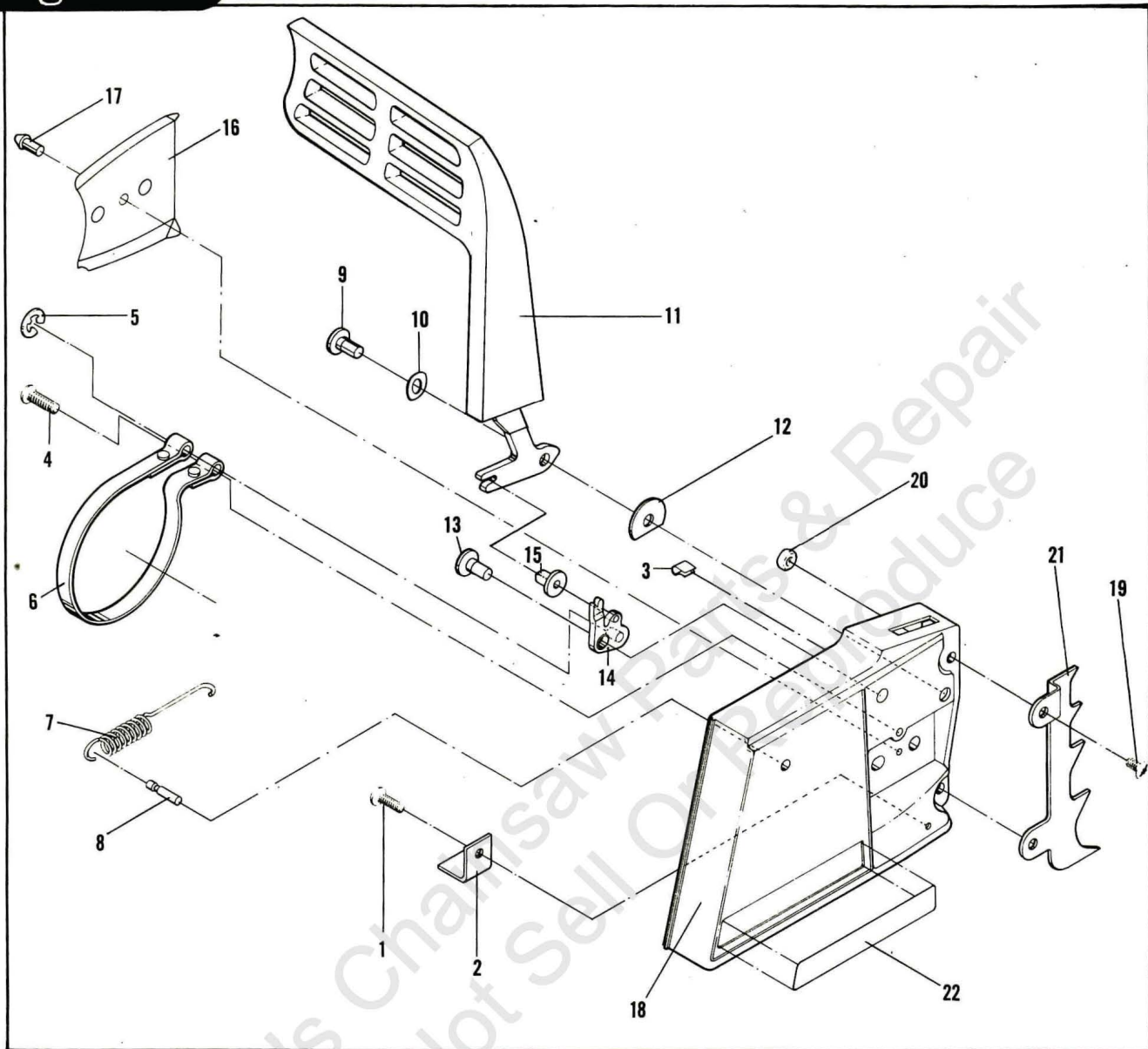
**Figure 2**



ITEM NO.	PART NUMBER	DESCRIPTION	UNITS PER ASY.
	216044	Starter Assembly	1
1	218056	. Screw-Pawl Plate	1
2	218055	. Washer-Pawl Plate	1
3	217893	. Plate-Pawl	1
4	218054	. Spring-Pawl Plate	1
5	218053	. Bushing-Pulley	1
6	217890	. Pawl	2

ITEM NO.	PART NUMBER	DESCRIPTION	UNITS PER ASY.
7	218052	. Spring-Pawl	2
8	218051	. Rope	1
9	217889	. Pulley-Starter	1
10	217891	. Spring/Housing Assembly	1
11	218929	. Housing/Guide Assembly	1
12	91255	Handle-Starter	1
13	105490	. Washer	1

**Figure 3 CHAIN BRAKE ASSEMBLY**



**CHAIN BRAKE**

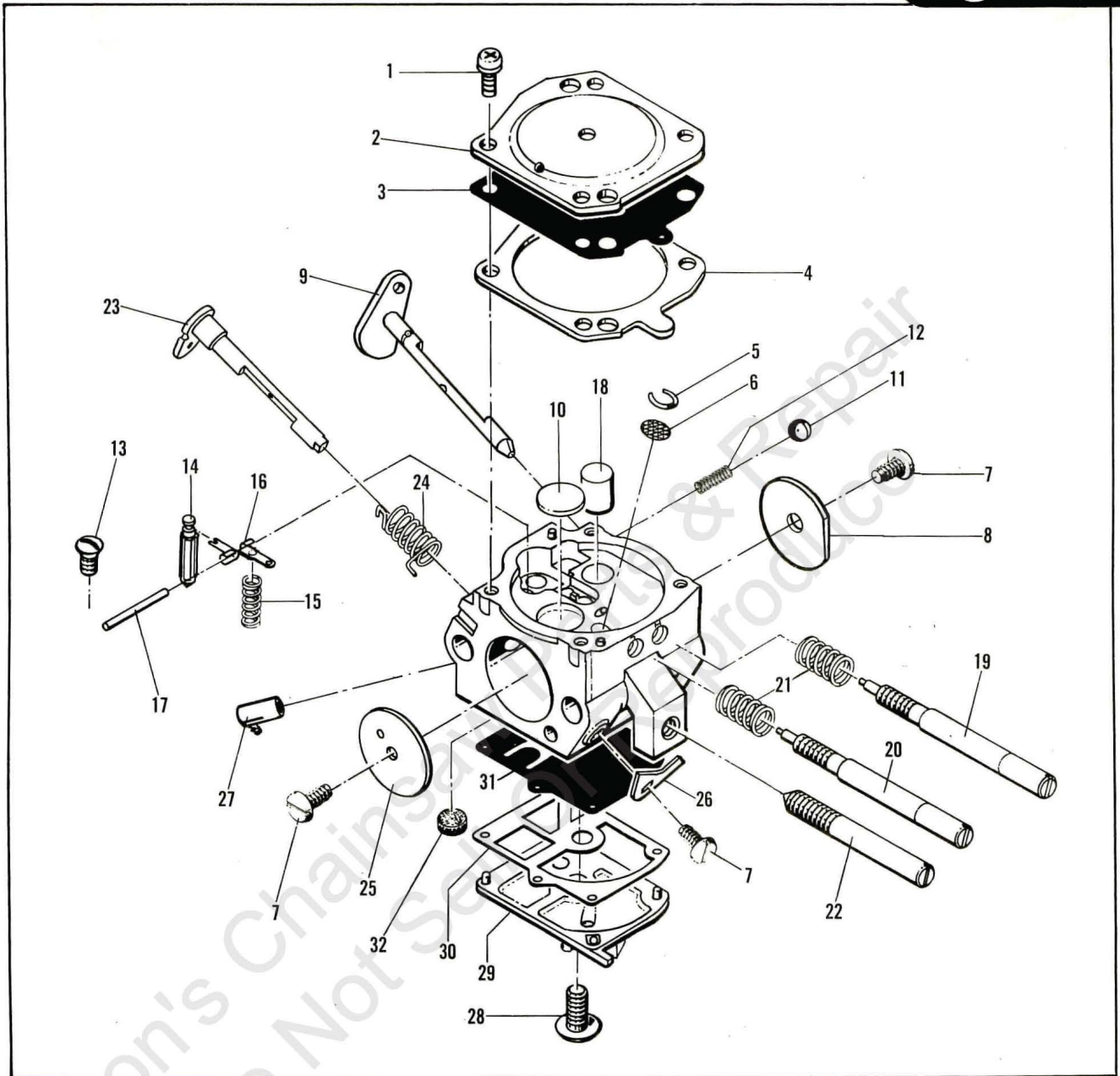
ITEM NO.	PART NUMBER	DESCRIPTION	UNITS PER ASY.
1	218407 219195	Chain Brake Assembly . Screw-10-24x.50 (45-50 in. lb. torque)	1 1
2	218641	. Stop-Chain	1
3	110737	. Clip	1
4	218361	. Screw-1/4-20x.75 (85-90 in. lb. torque)	1
5	218079	. E-Clip-Brake Band	1
6	217472	. Brake Band	1
7	217440	. Spring-Chain Brake	1
8	217449	. Pin-Spring Hook	1
9	217450	. Pivot-Lever	1
10	218679	. Washer-Spring	1

ITEM NO.	PART NUMBER	DESCRIPTION	UNITS PER ASY.
11	218059	. Flag Lever Assembly	1
12	218674	. Washer	1
13	217448	. Pivot-Latch	1
14	217454	. Latch Assembly	1
15	218956	. Slider-Latch	1
16	218832	. Plate-Bar	1
17	218719	. Screw-Drive	1
18	217664	. Chain Brake Housing	1
19	217935	Screw-10-24x.50 (45-50 in. lb. torque)	2
20	218315	Nut-Hex 10-24	2
21	218103	Spike	1
22	218728	Plate-Name	1



# CARBURETOR ASSEMBLY

Figure 4



ITEM NO.	PART NUMBER	DESCRIPTION	UNITS PER ASY.
	218783	Walbro HDA-36	
1	-- -- ①	.Screw-Metering Cover	4
2	-- --	.Cover-Metering Diaphragm	1
3	-- -- ①②	.Diaphragm Asy-Metering	1
4	-- -- ①②	.Gasket-Metering Diaphragm	1
5	-- -- ①	.Ring-Screen Retainer	1
6	-- -- ①	.Screen-Check Valve	1
7	-- -- ①	.Screw	3
8	-- --	.Shutter-Choke	1
9	-- --	.Shaft/Lever Asy Choke	1
10	-- -- ③	.Plug-Welch	1
11	-- -- ①	.Ball-Choke Friction	1
12	-- -- ①	.Spring-Choke Friction	1
13	-- -- ①	.Screw-Metering Lever Pin	1
14	-- -- ①	.Valve-Inlet Needle	1
15	-- -- ①	.Spring-Metering Lever	1
16	-- -- ①	.Lever-Metering	1

ITEM NO.	PART NUMBER	DESCRIPTION	UNITS PER ASY.
17	-- -- ①	.Pin-Metering Lever	1
18	-- --	.Nozzle Asy/Check Valve	1
19	-- -- ①	.Needle-High Speed	1
20	-- -- ①	.Needle-Low Speed	1
21	-- -- ①	.Spring-High/Low Speed Needle	2
22	-- --	.Screw-Idle Adjustment	1
23	-- --	.Shaft/Lever Asy-Throttle	1
24	-- -- ①	.Spring-Throttle Return	1
25	-- --	.Shutter-Throttle	1
26	-- --	.Stop-Throttle	1
27	-- --	.Fitting-Elbow	1
28	-- --	.Screw-Pump Cover	1
29	-- --	.Cover-Fuel Pump	1
30	-- -- ①②	.Gasket-Fuel Pump	1
31	-- -- ①②	.Diaphragm-Fuel Pump	1
32	-- -- ①	.Screen-Fuel Inlet	1

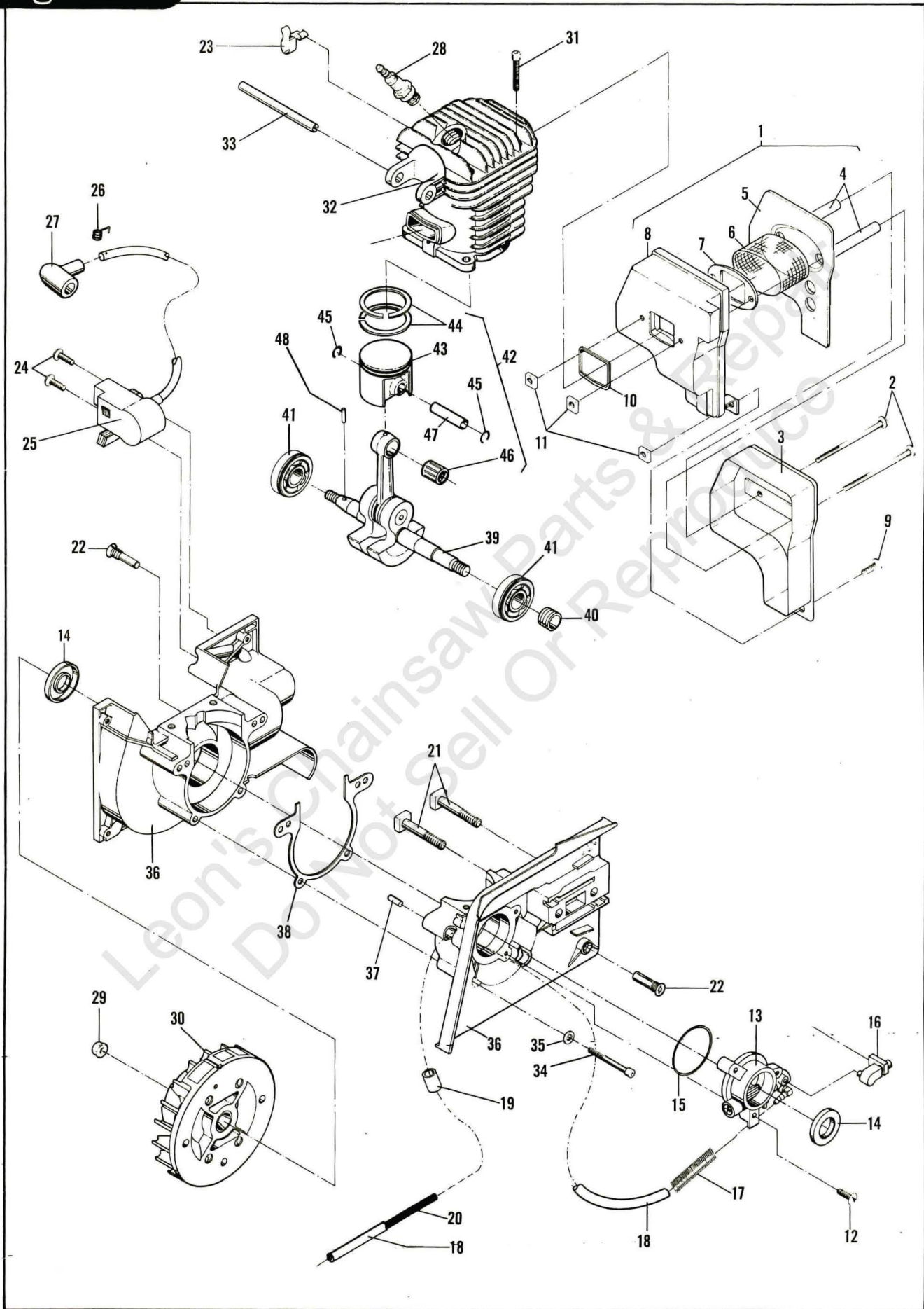
① Contained in Major Repair Kit P/N 219074  
 ② Contained in Minor Repair Kit P/N 219075

NOTE: Only those parts listed in repair kits are available for service replacement.

Figure 5

# POWERHEAD ASSEMBLY

DOUBLE EAGLE™ 50





### FIGURE 5 POWERHEAD ASSEMBLY

ITEM NO.	PART NUMBER	DESCRIPTION	UNITS PER ASY.
1	218793	Muffler Assembly	1
2	217942	. Screw-10-24x2.62 (70 in. lb. torque)	2
3	218795	. Muffler Body-Outer	1
4	218030	. Tube-Bolt	2
5	218725	. Baffle	1
6	217629	. Screen-Spark Arrester	1
7	217627	. Plate-Reinforcement	1
8	218794	. Body-Inner	1
9	217935	Screw-10-24x.50 (70 in. lb. torque)	1
10	215947	Gasket-Exhaust	1
11	218005	Nut-Muffler 10-24	3
12	217936	Screw-10-24x.75 (30 in. lb. torque)	3
13	222419 ①	Oiler Assembly	1
14	215892 ①	. Seal-Oil	2
15	217867	. Ring-"O"	1
16	219972	Connector-Oil Pump	1
17	218669	Guard-Oil Hose	1
18	218482	Hose-Oil Pump	1
19	219051	Sleeve-Oil Hose	1
20	218589	Spring-Oil Hose	1
21	92459	Bolt-Bar	2
22	217781	Screw-Front Mount (50 in. lb. torque)	2
23	218865	Clip-Spring	1
24	217936	Screw-10-24x.75 (35-45 in. lb. torque)	2

ITEM NO.	PART NUMBER	DESCRIPTION	UNITS PER ASY.
25	218830	Ignition Assembly	1
26	102556	. Connector-Spark Plug	1
27	95266	. Boot-Spark Plug	1
28	62345	Spark Plug DJ8J	1
29	218042	Nut-Flange M8 (220-250 in. lb. torque)	1
30	218635	Flywheel Assembly	1
31	217943	Screw 1/4-20x1.0 (90 in. lb. torque)	4
32	218781	Cylinder Assembly	1
33	218149	. Pin-Roll	1
34	217721	Screw-10-24x1.625 (70 in. lb. torque)	4
35	216591	Washer-Flat	4
36	216477	Crankcase Assembly	1
37	215834	. Dowel Pin-Crankcase	2
38	216508	Gasket-Crankcase	1
39	218897	C' Shaft/C-Rod/Wormgear	1
40	217273	. Worm Oil Pump	1
41	215946	. Bearing-Ball	2
42	218952	Piston Assembly	1
43	218751	. Piston	1
44	215825	. Ring-Piston	2
45	215876	. Ring-Snap	2
46	215837	. Bearing-Piston Pin	1
47	21 836	. Pin-Piston	1
48	217632	Pin-Timing	1

① Although 2 seals are required for the unit, only 1 seal is included with the Oiler Assembly.

### SPECIFICATIONS Figure 6

<p>Displacement ..... 50cc - 3.1 Cu. In.                      Bore &amp; Stroke (inches) ..... 1.72 x 1.26                      Cylinder ..... Hard Chrome Plated                      Bearing:                          Main ..... Ball                          Connecting Rod ..... Needle                      Fuel Tank Capacity ..... 20 Ounces                      Oil Tank Capacity ..... 7.5 Ounces</p>	<p>Auto Oiler Type ..... Gear Driven                      Clutch Engagement Speed ..... 2900 - 3350 RPM                      Idle Speed ..... 2200 - 2500 RPM                      Ignition ..... Electronic                      Lamination/Flywheel Airgap .. .010 - .012                      Spark Plug/Gap ..... Champion DJ8J/.025                      Weight (PUO) .....                      Carburetor Adjustment ..... Two Needle/External</p>
---	---

### BAR / CHAIN / SPROCKET Figure 7

**NOTE**

Before ordering replacement service parts, identify pitch of Sprocket/Drum/Bearing Assembly supplied with your unit (see Sprocket Identification chart). Order only components of the same pitch to ensure proper mesh.

**FOR .375 PITCH**

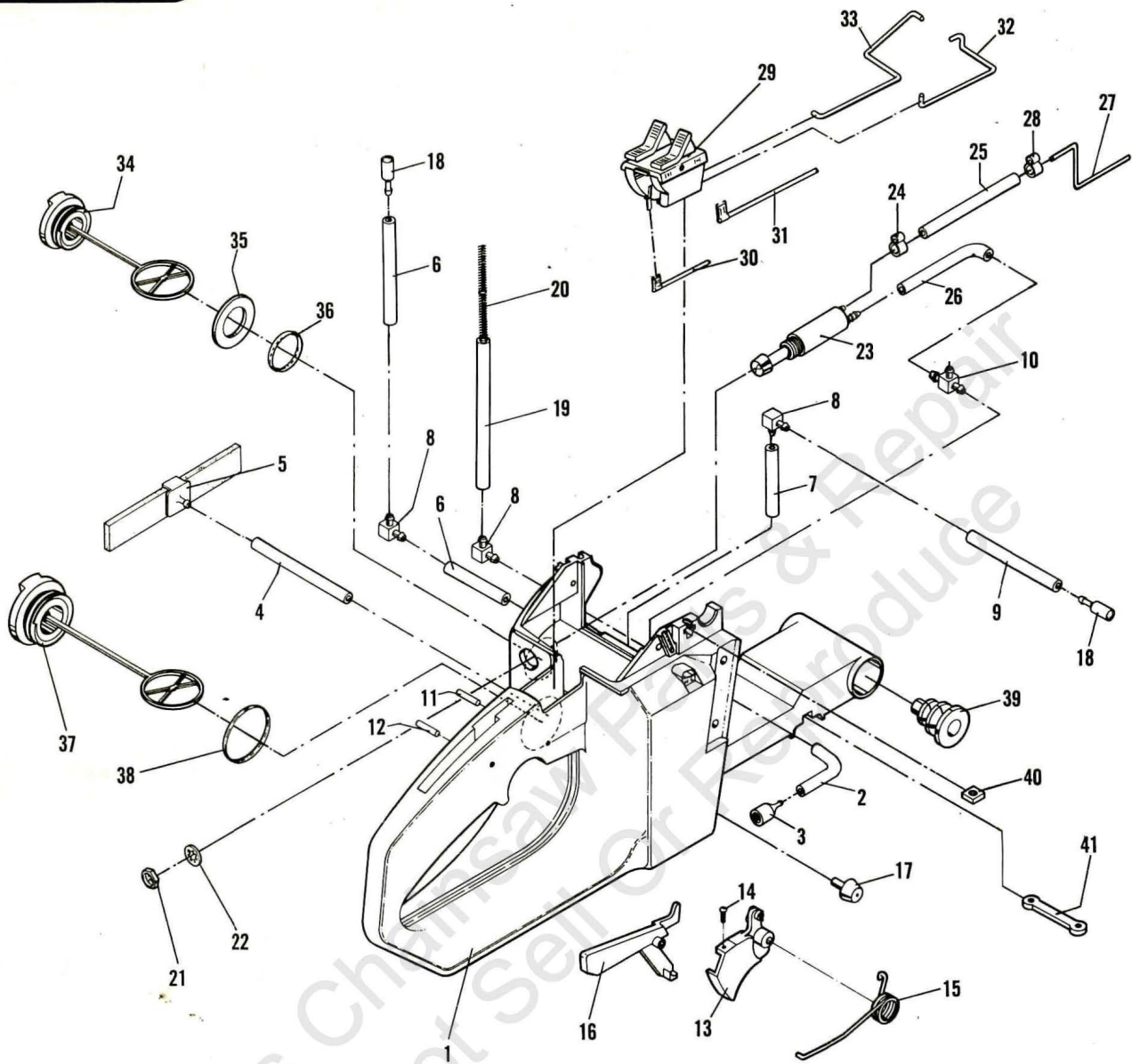
**FOR .325 PITCH**

<p><b>218928</b> Sprocket/Drum/Bearing Asy.</p> <p><b>94074-00</b> 16" Speed Mac Bar  <b>86830</b> Replacement - Sprocket Tip  <b>218839-12</b> 16" Chain PMR 370GLX 60 CL</p> <p><b>94074-05</b> 16" Speed Mac Bar  <b>219975</b> Replacement - Sprocket Tip  <b>218839-12</b> 16" Chain PMR 370GLX 60 CL</p> <p><b>93778-00</b> 20" Speed Mac Bar  <b>86830</b> Replacement - Sprocket Tip  <b>218069-12</b> 20" Chain PMR 370GLX 70 CL</p> <p><b>93778-05</b> 20" Speed Mac Bar  <b>219975</b> Replacement - Sprocket Tip  <b>218069-12</b> 20" Chain PMR 370GLX 70 CL</p>	<p><b>218925</b> Sprocket/Drum/Bearing Asy.</p> <p><b>218923</b> 16" Sprocket Tip Bar  <b>218999</b> Replacement - Sprocket Tip  <b>218551-12</b> 16" Chain SPG 320GLX 68 CL</p> <p><b>218924</b> 20" Sprocket Tip Bar  <b>218999</b> Replacement - Sprocket Tip  <b>218552-12</b> 20" Chain SPG 320GLX 79 CL</p> <p style="text-align: center;"><b>SPROCKET IDENTIFICATION</b></p> <div style="text-align: center;"> </div>
---	--

NOTE: Part number of Guide Bar is stamped on the bar.

# Figure 8

## MAIN FRAME ASSEMBLY



ITEM NO.	PART NUMBER	DESCRIPTION	UNITS PER ASY.
	<b>222420</b>	Mainframe Assembly	1
1	<b>219988</b>	. Mainframe-Weldment	1
2	<b>218535</b>	. Hose-Oil Pickup	1
3	<b>92465</b>	. Pickup-Oil	1
4	<b>218535</b>	. Hose-Fuel Tank	1
5	<b>218895</b>	. Pickup Asy-Fuel	1
6	<b>219059</b>	. Hose-Vent (Fuel)	2
7	<b>219967</b>	. Hose-Barb (Oil)	1
8	<b>218896</b>	. Barb-Hose (Right Angle)	3
9	<b>219966</b>	. Hose-Vent (Oil)	1
10	<b>219914</b>	. Barb-"T"	1
11	<b>218491</b>	. Pin-Trigger	1
12	<b>218492</b>	. Pin-Trigger Release	1
13	<b>93538-01</b>	. Trigger Assembly	1
14	<b>111013</b>	.. Screw-5-40x.50	1
15	<b>93771</b>	. Spring-Trigger	1
16	<b>218836</b>	. Release-Trigger	1
17	<b>218122</b>	. Bumper-Cut Control	2
18	<b>218260</b>	Vent-Fuel/Oil	2
19	<b>218972</b>	Hose-Fuel	1
20	<b>93998</b>	Spring-Fuel Hose	1

ITEM NO.	PART NUMBER	DESCRIPTION	UNITS PER ASY.
21	<b>219917</b>	Nut-Hex	1
22	<b>219918</b>	Washer-Lock	1
23	<b>219945</b>	Oiler-Manual Assembly	1
24	<b>219915</b>	. Clamp	1
25	<b>219911</b>	. Hose-Oil Outlet	1
26	<b>219912</b>	. Hose-Oil Inlet	1
27	<b>219913</b>	Tube-Oil Outlet	1
28	<b>219915</b>	Clamp	1
29	<b>218786</b>	Control Asy	1
30	<b>218348</b>	Wire Asy-Ground	1
31	<b>218349</b>	Wire Asy-Switch	1
32	<b>218736</b>	Rod-Choke	1
33	<b>218724</b>	Rod-Throttle	1
34	<b>219999</b>	Cap Asy-Oil (non-vented)	1
35	<b>219943</b>	. Gasket	1
36	<b>235511</b>	. Ring-"O"	1
37	<b>236790</b>	Cap Asy-Fuel	1
38	-- --	. Ring-"O"	1
39	<b>218124</b>	Mount-Front	2
40	<b>218005</b>	Nut-Square 10-24	2
41	<b>218117</b>	Plate-Nut	1