

ILLUSTRATED PARTS LIST

MODELS	SERIAL NUMBER PREFIX	MODELS	SERIAL NUMBER PREFIX
600150-02	12-		
600150-06	12-		

McCulloch Chain Saws are identified by a model number (in this instance 600150) followed by a suffix number (02, 06). Suffix numbers denote variations in parts or assemblies used in the manufacture of this product.

Part numbers listed in this I.P.L. which have a circled number ① or numbers preceding the description, are used only on the model or models identified by a circled number ① or numbers.

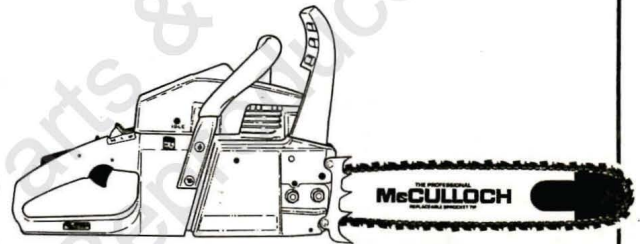
Part numbers which have one or more dots (.) preceding their descriptions may be ordered individually, but they are also included in the kit or assembly whose description begins directly above the dot(s).

Part number(s) in this IPL which were not in the previous IPL covering these saws, are indicated by a dash (-) preceding the new part number(s).

The policy of McCulloch Corporation is one of continual improvement in design, manufacturing and engineering advancement wherever possible to assure still finer power tools. Hence, specifications, equipment, colors, design and manufacturer's suggested list prices are subject to change without notice and McCulloch Corporation reserves the right to make such changes without prior notification or obligation to backfit or supply backfit components for units previously shipped from the factory.

DECEMBER 1987

Double Eagle™ 50 CHAIN SAW



- CONTENTS -

	PAGE
FIGURE 1. General Assembly	2
FIGURE 2. Starter Assembly	3
FIGURE 3. Chain Brake Asy	4
FIGURE 4. Carburetor Asy	5
FIGURE 5. Powerhead Asy	6
FIGURE 6. Specifications.....	7
FIGURE 7. Bar/Chain/Chain Sharpening Tools	7
FIGURE 8. Main Frame Asy	8

To answer service-related questions and to solve common consumer problems quickly, call this toll-free hot-line:

(800) 423-6302

If located in Arizona, call collect:
(602) 453-3681


McCULLOCH
CORPORATION

© U.S.A. - McCulloch Corporation, 1987

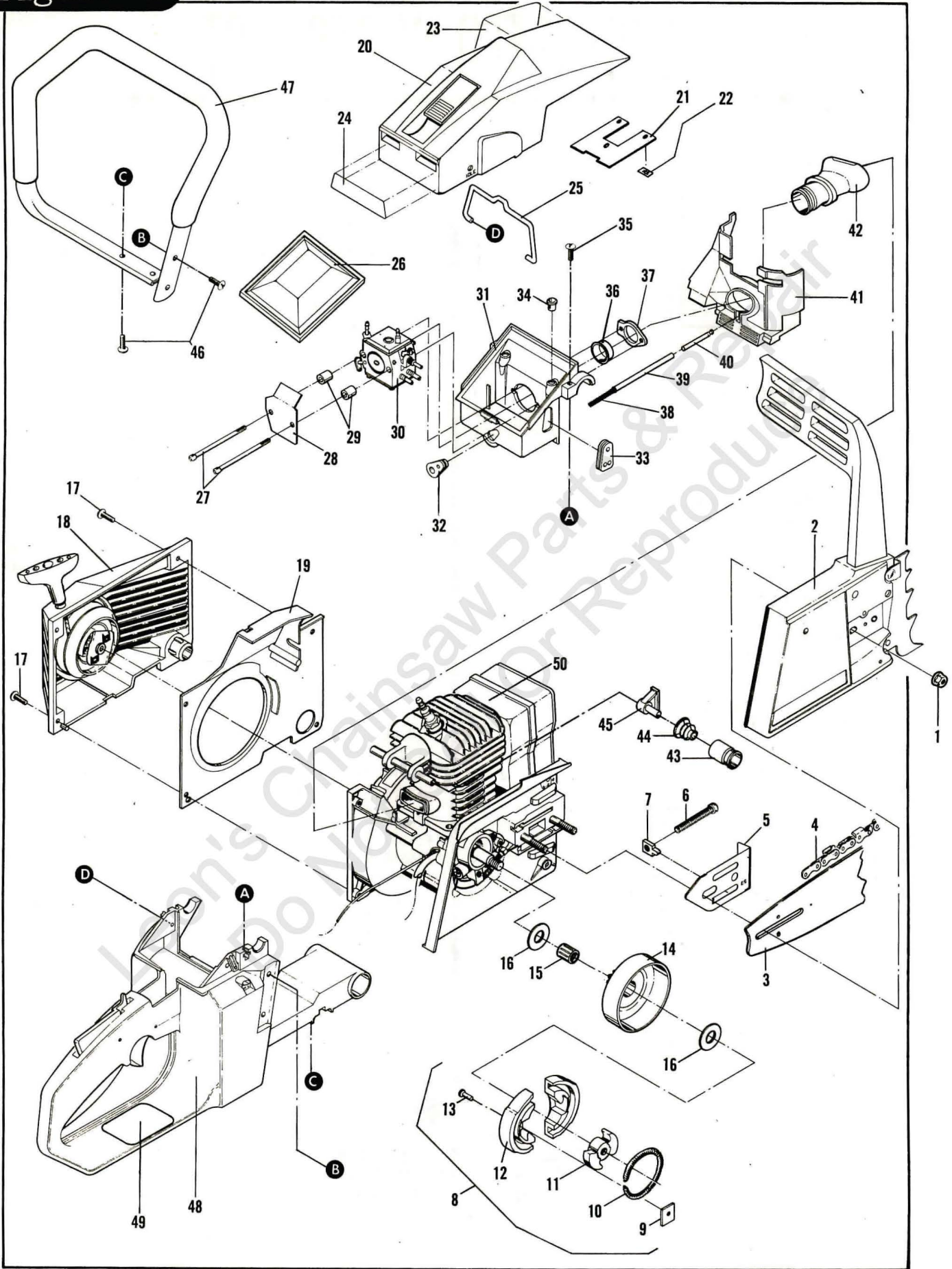
Printed in U.S.A.

900 Lake Havasu Avenue, Lake Havasu City, Arizona 86403

219040-03

Figure 1 GENERAL ASSEMBLY

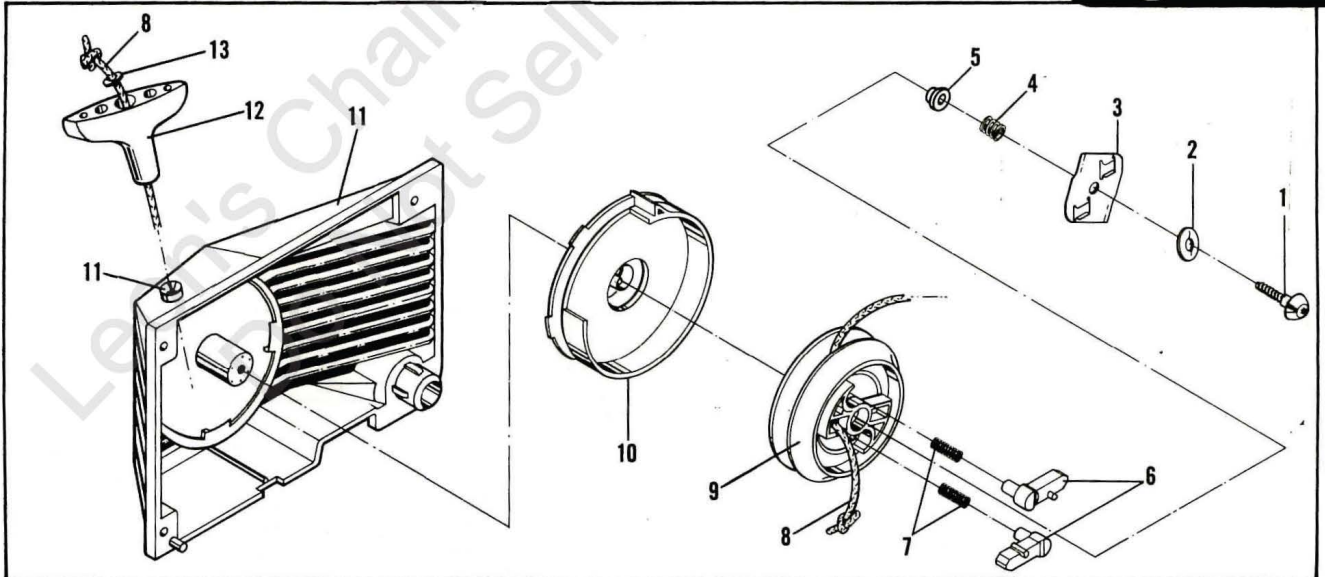
DOUBLE EAGLE™ 50



ITEM NO.	PART NUMBER	DESCRIPTION	UNITS PER ASY.
1	218042	Nut-Bar Flange M-8	2
2	Fig. 3	Brake Asy-Chain	1
3	Fig. 7	Bar	1
4	Fig. 7	Chain	1
5	217594	Plate-Bar	1
6	217640	Screw-Bar Adjustment	1
7	217479	Nut-Bar Adjustment	1
8	218985	Clutch Asy	1
9	-- --	. Plate	2
10	-- --	. Spring Asy	1
11	-- --	. Rotor	1
12	-- --	. Shoe	2
13	-- --	. Rivet	2
14	Fig. 7	Drum/Sprocket/Bearing Asy	1
15	110971	. Bearing-Needle	1
16	86958	. Washer-Shim	2
17	217936	Screw-10-24x.75 (50 in. lb. torque)	4
18	Fig. 2	Starter Asy	1
19	218840	Baffle-Fan	1
20	218788	Cover Asy-Air	1
21	-- --	. Plate-Cover	1
22	-- --	. Nut-Press	3
23	-- --	Decal-Double Eagle 50	1
24	218257	Decal-Instruction	1
25	-219166	Bail-Cover	1
26	219164	Filter-Air	1
27	-219231	Screw-10-24x2.19 (30 in. lb. torque)	2

ITEM NO.	PART NUMBER	DESCRIPTION	UNITS PER ASY.
28	218754	Shield-Spitback	1
29	218757	Spacer-Shield	2
30	Fig. 4	Carburetor	1
31	218723	Box-Air	1
32	218761	Grommet-Throttle/Choke	1
33	91995-01	Grommet-Carburetor Needles	1
34	218922	Bushing-Hose	2
35	217937	Screw-10-24x1 (20 in. lb. torque)	2
36	218809	Eyelet	1
37	218792	Flange-Carburetor	1
38	93998	Spring-Oil Hose	1
39	218972	Hose-Pulse	1
40	218129	Barb-Pulse Hose	1
41	218768	Shroud-Cylinder	1
42	218780	Boot-Intake	1
43	218371	Carrier-Rear Mount	2
44	218801	Mount-Rear	2
45	218362	Retainer-Rear Mount	2
46	217936	Screw-10-24x.75 (50 in. lb. torque)	4
47	218787	Frame-"C"	1
48	Fig. 8	Mainframe Asy	1
49	219058	Label - Safety	1
50	Fig. 5	Powerhead Asy	1

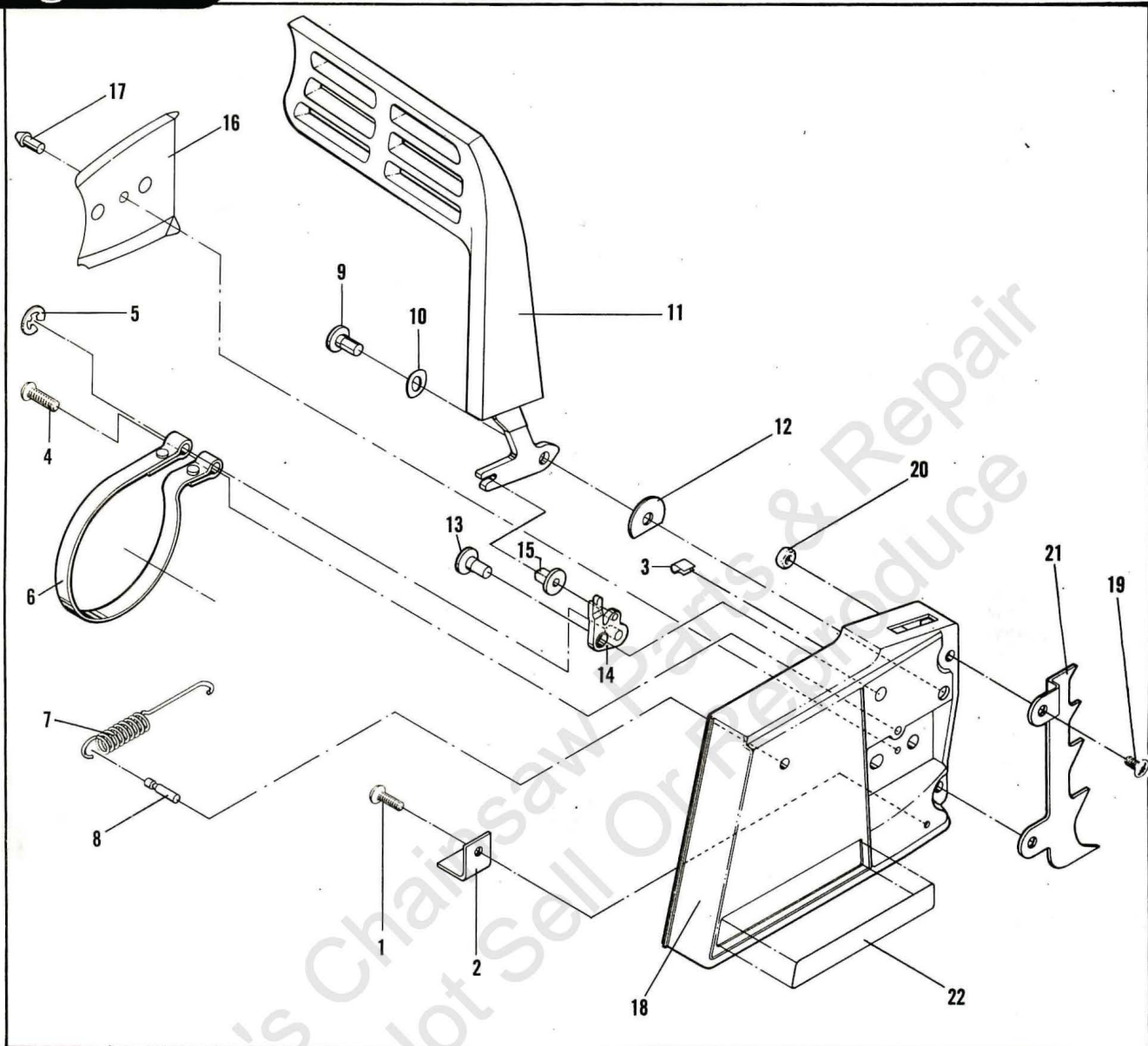
STARTER ASSEMBLY **Figure 2**



ITEM NO.	PART NUMBER	DESCRIPTION	UNITS PER ASY.
	216044	Starter Assembly	1
1	218056	. Screw-Pawl Plate	1
2	218055	. Washer-Pawl Plate	1
3	217893	. Plate-Pawl	1
4	218054	. Spring-Pawl Plate	1
5	218053	. Bushing-Pulley	1
6	217890	. Pawl	2

ITEM NO.	PART NUMBER	DESCRIPTION	UNITS PER ASY.
7	218052	. Spring-Pawl	2
8	218051	. Rope	1
9	217889	. Pulley-Starter	1
10	217891	. Spring/Housing Assembly	1
11	218929	. Housing/Guide Assembly	1
12	91255	Handle-Starter	1
13	105490	. Washer	1

Figure 3 CHAIN BRAKE ASSEMBLY



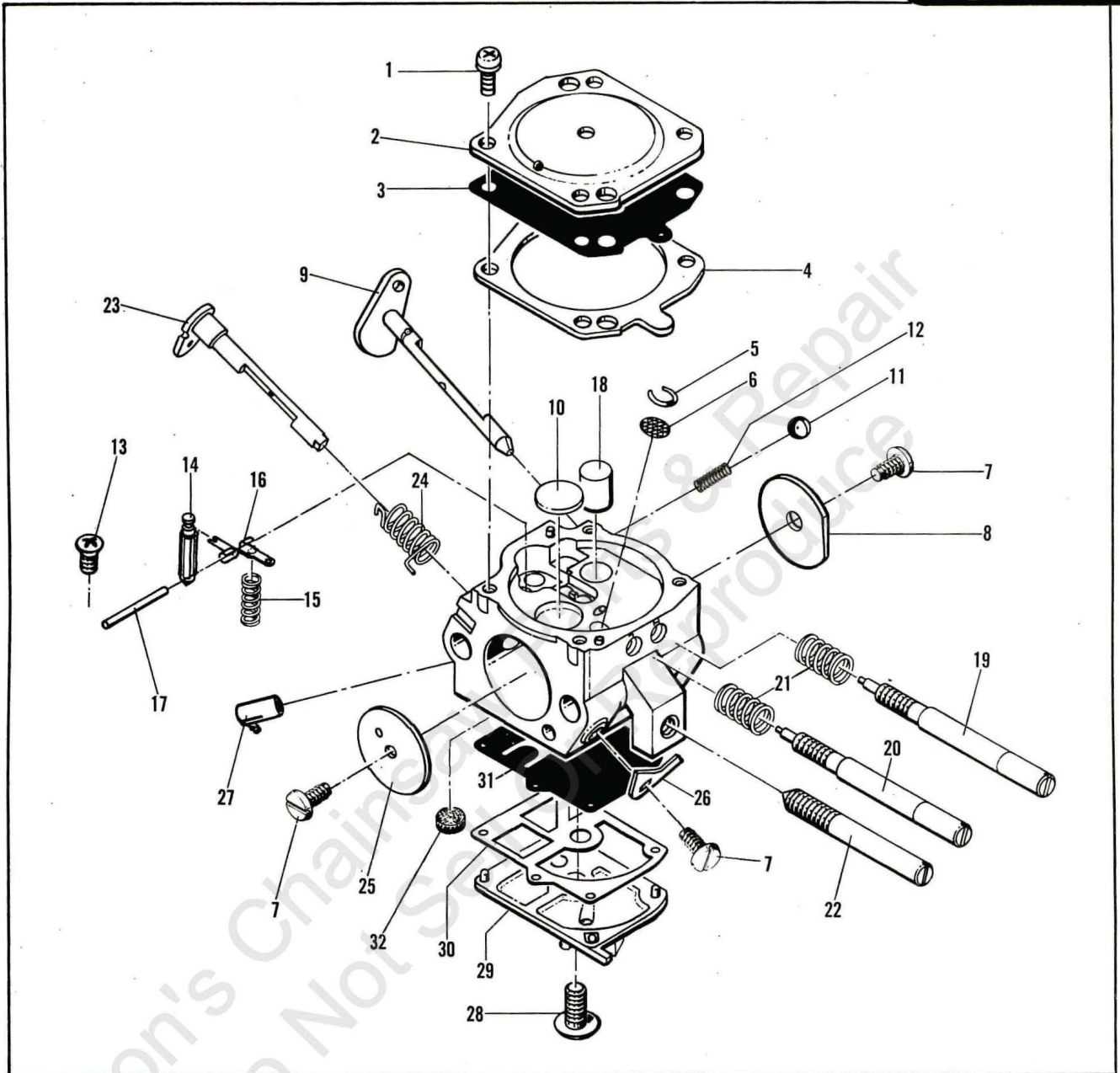
CHAIN BRAKE

ITEM NO.	PART NUMBER	DESCRIPTION	UNITS PER ASY.
	-219195	Chain Brake Assy	1
1	219195	. Screw-10-24x.50 (45-50 in. lb. torque)	1
2	218641	. Stop-Chain	1
3	110737	. Clip-U	1
4	218361	. Screw-1/4-20x.75 (85-90 in. lb. torque)	1
5	218079	. Clip-E	1
6	217472	. Band-Brake	1
7	217440	. Spring-Chain Brake	1
8	217449	. Pin-Spring Hook	1
9	217450	. Pivot-Lever	1
10	218679	. Washer-Spring	1

ITEM NO.	PART NUMBER	DESCRIPTION	UNITS PER ASY.
11	218059	. Flag/Lever Assy	1
12	218674	. Washer-D	1
13	217448	. Pivot-Latch	1
14	217454	. Latch Assy	1
15	218956	. Slider-Latch	1
16	218832	. Plate-Bar	1
17	218719	. Screw-Drive	1
18	217664	. Housing-Brake	1
19	217935	Screw-10-24x.50 (45-50 in. lb. torque)	2
20	218315	Nut-Hex 10-24	2
21	218103	Spike	1
22	218728	Plate-Name	1

CARBURETOR ASSEMBLY

Figure 4



ITEM NO.	PART NUMBER	DESCRIPTION	UNITS PER ASY.
	218783	Walbro HDA-36	
1	-- -- ①	.Screw-Metering Cover	4
2	-- --	.Cover-Metering Diaphragm	1
3	-- -- ①②	.Diaphragm Asy-Metering	1
4	-- -- ①②	.Gasket-Metering Diaphragm	1
5	-- -- ①	.Ring-Screen Retainer	1
6	-- -- ①	.Screen-Check Valve	1
7	-- -- ①	.Screw	3
8	-- --	.Shutter-Choke	1
9	-- --	.Shaft/Lever Asy Choke	1
10	-- -- ①	.Plug-Welch	1
11	-- -- ①	.Ball-Choke Friction	1
12	-- -- ①	.Spring-Choke Friction	1
13	-- -- ①	.Screw-Metering Lever Pin	1
14	-- -- ①	.Valve-Inlet Needle	1
15	-- -- ①	.Spring-Metering Lever	1
16	-- -- ①	.Lever-Metering	1

ITEM NO.	PART NUMBER	DESCRIPTION	UNITS PER ASY.
17	-- -- ①	.Pin-Metering Lever	1
18	-- --	.Nozzle Asy/Check Valve	1
19	-- -- ①	.Needle-High Speed	1
20	-- -- ①	.Needle-Low Speed	1
21	-- -- ①	.Spring-High/Low Speed Needle	2
22	-- --	.Screw-Idle Adjustment	1
23	-- --	.Shaft/Lever Asy-Throttle	1
24	-- -- ①	.Spring-Throttle Return	1
25	-- --	.Shutter-Throttle	1
26	-- --	.Stop-Throttle	1
27	-- --	.Fitting-Elbow	1
28	-- --	.Screw-Pump Cover	1
29	-- --	.Cover-Fuel Pump	1
30	-- -- ①②	.Gasket-Fuel Pump	1
31	-- -- ①②	.Diaphragm-Fuel Pump	1
32	-- -- ①	.Screen-Fuel Inlet	1

① Contained in Major Repair Kit P/N 219074
 ② Contained in Minor Repair Kit P/N 219075

NOTE: Only those parts listed in repair kits are available for service replacement.

Figure 5

POWERHEAD ASSEMBLY

DOUBLE EAGLE™ 50

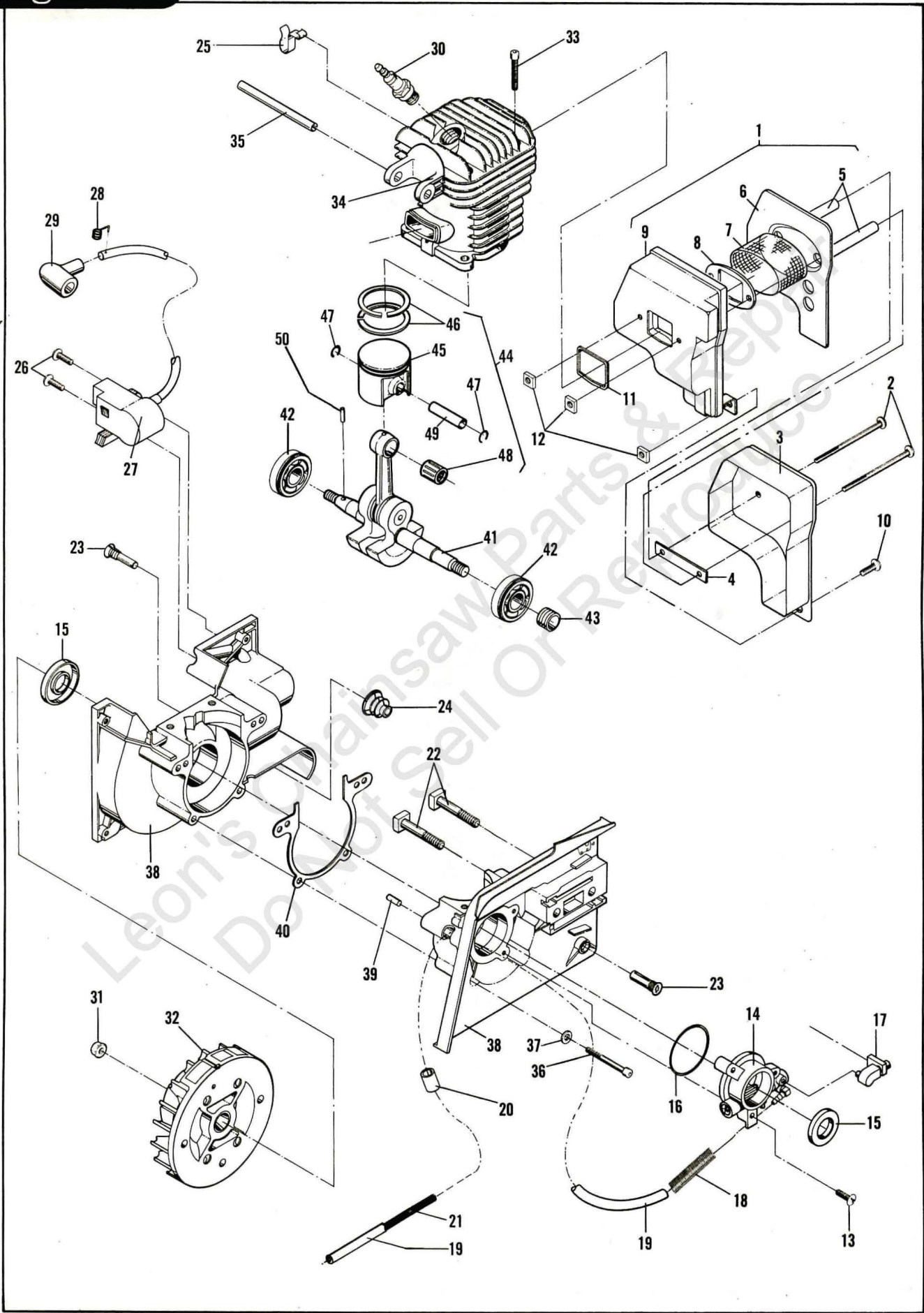


FIGURE 5 POWERHEAD ASSEMBLY

DOUBLE EAGLE™ 50

ITEM NO.	PART NUMBER	DESCRIPTION	UNITS PER ASY.	ITEM NO.	PART NUMBER	DESCRIPTION	UNITS PER ASY.
1	218793	Muffler Assembly	1	26	217936	Screw-10-24x.75 (35-45 in. lb. torque)	2
2	217942	. Screw-10-24x2.62 (70 in. lb. torque)	2	27	218830	Ignition Assembly	1
3	218795 ①	. Muffler Body-Outer	1	28	102556	. Connector-Spark Plug	1
4	218237	. Plate-Reinforcing	1	29	95266	. Boot-Spark Plug	1
5	218030	. Tube-Bolt	2	30	62345	Spark Plug	1
6	218725	. Baffle	1	31	218042	Nut-Flywheel (220-250 in. lb. torque)	1
7	217629	. Screen-Spark Arrester	1	32	218635	Flywheel Assembly	1
8	217627	. Plate-Reinforcement	1	33	217943	Screw 1/4-20x1.0 (90 in. lb. torque)	4
9	218794	. Body-Inner	1	34	218781	Cylinder Assembly	1
10	217935	Screw-10-24x.50 (70 in. lb. torque)	1	35	218149	. Pin-Roll	1
11	215947	Gasket-Exhaust	1	36	217721	Screw-10-24x1.625 (70 in. lb. torque)	4
12	218005	Nut-Muffler 10-24	3	37	216591	Washer-Flat	4
13	217936	Screw-10-24x.75 (30 in. lb. torque)	3	38	216477	Crankcase Assembly	1
14	217266	Oiler Assembly	1	39	215834	. Dowel Pin-Crankcase	2
15	215892	Seal-Oil	2	40	216508	Gasket-Crankcase	1
16	217867	"O" Ring	1	41	218897	C' Shaft/C-Rod/Wormgear	1
17	-219972	Connector-Oil Pump	1	42	215946	. Bearing-Ball	2
18	218669	Guard-Oil Hose	1	43	-217273	. Gear-Worm	1
19	218482	Hose-Oil Pump	1	44	218952	Piston Assembly	1
20	219051	Sleeve-Oil Hose	1	45	218751	. Piston	1
21	218589	Spring-Oil Hose	1	46	215825	. Ring-Piston	2
22	92459	Bolt-Bar	2	47	215876	. Ring-Snap	2
23	217781	Screw-Front Mount (50 in. lb. torque)	2	48	215837	. Bearing-Piston Pin	1
24	218124	Mount-Vibration	2	49	215836	. Pin-Piston	1
25	218865	Clip-Wire	1	50	217632	Pin-Timing	1

① When replacing Body-Outer, Item 4, must also be purchased. Note: The Plate-Reinforcing is no longer spot welded to Body.

SPECIFICATIONS Figure 6

<p>Displacement 50cc - 3.1 Cu. In. Bore & Stroke (inches) 1.72 x 1.26 Cylinder Hard Chrome Plated Bearing: Main Ball Connecting Rod Needle Fuel Tank Capacity 20 Ounces Oil Tank Capacity 7.5 Ounces</p>	<p>Auto Oiler Type Gear Driven Clutch Engagement Speed 2900 - 3350 RPM Idle Speed 2200 - 2500 RPM Ignition Electronic Lamination/Flywheel Airgap .. .010 - .012 Spark Plug/Gap Champion DJ8J/.025 Weight (PUO) 11.9 Lbs. Carburetor Adjustment Two Needle/External</p>
---	---

BAR/CHAIN/CHAIN SHARPENING TOOLS Figure 7

* **WARNING:** The GX saw chain listed below may be capable of severe kickback that could result in serious injury to the user. DO NOT use this saw chain unless you have experience and specialized training for dealing with kickback. The GLX Saw chain listed below has reduced kickback potential.

NOTE

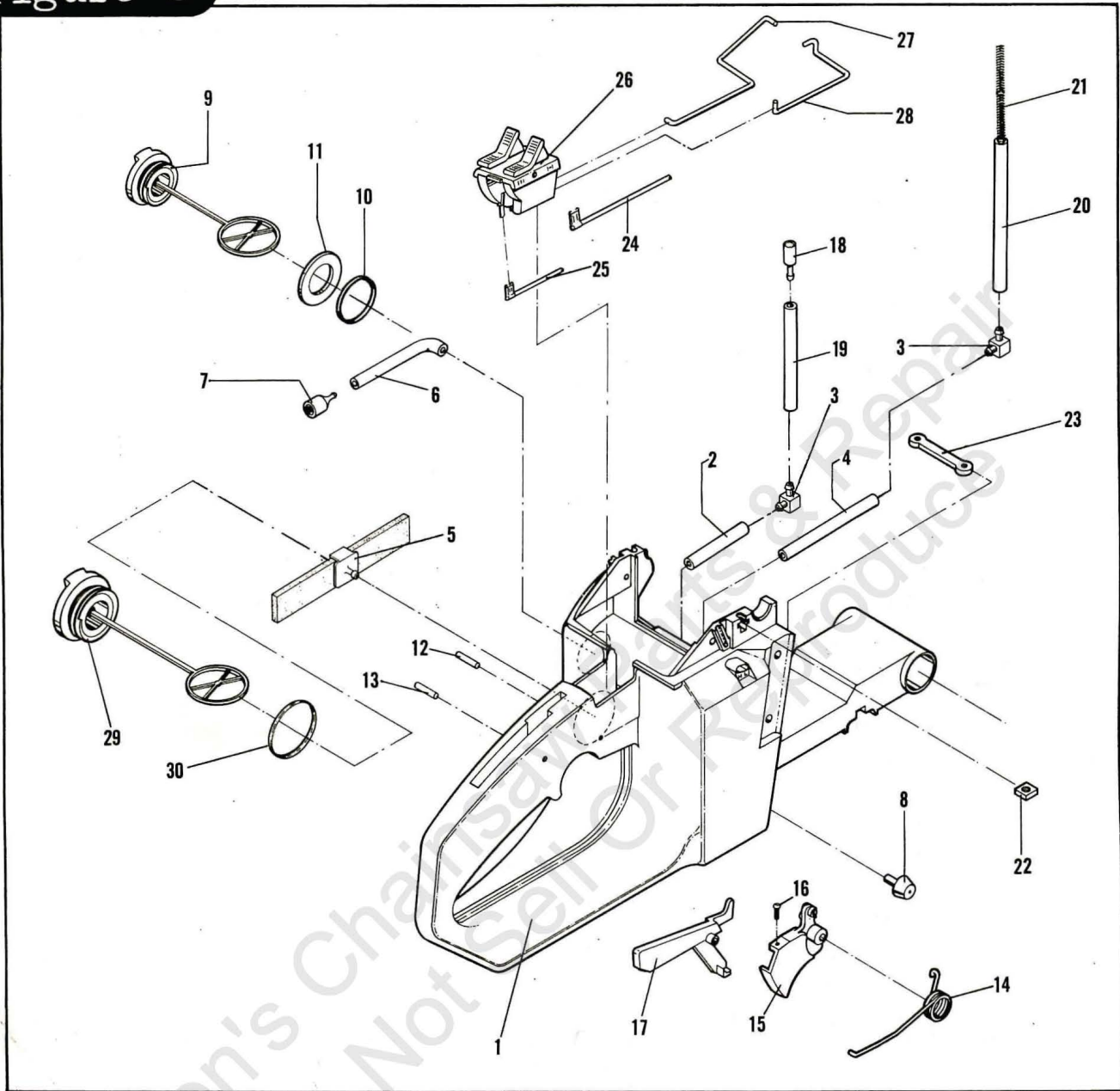
Before ordering replacement service parts, identify pitch of Sprocket/Drum/Bearing Assembly supplied with your unit (see Sprocket Identification chart). Order only components of the same pitch to ensure proper mesh.

218928 Sprocket/Drum/Bearing Asy.	218925 Sprocket/Drum/Bearing Asy.	SHARPENING TOOLS - SPR370GX CHAIN
94074-00 16" Speed Mac Bar 86830 Replacement-Sprocket Tip * 89974-12 16" Chain SPR370GX 60CL 218839-12 16" Chain PMR370GLX 60CL	218923 16" Sprocket Tip Bar 218999 Replacement-Sprocket Tip 218551-12 16" Chain SPG320GLX 68CL	218738 File Plate 219161 7/32" (5mm) Round File Twin Pack 56698-23 7/32" (5mm) Round File Dozen Pack
94074-05 16" Speed Mac Bar 219975 Replacement-Sprocket Tip * 89974-12 16" Chain SPR370GX 60CL 218839-12 16" Chain PMR370GLX 60CL	218924 20" Sprocket Tip Bar 218999 Replacement-Sprocket Tip 218552-12 20" Chain SPG320GLX 79CL	SHARPENING TOOLS - PMR370GLX CHAIN 219132 File Plate 219161 7/32" (5mm) Round File Twin Pack 56698-23 7/32" (5mm) Round File Dozen Pack
93778-00 20" Speed Mac Bar 86830 Replacement-Sprocket Tip * 89978-12 20" Chain SPR370GX 70CL 218069-12 20" Chain PMR370GLX 70CL	<p>SPROCKET IDENTIFICATION</p>	SHARPENING TOOLS - SPG320GLX CHAIN 219130 File Plate 98023 11/64" (4.5mm) Round File
93778-05 20" Speed Mac Bar 219975 Replacement-Sprocket Tip * 89978-12 20" Chain SPR370GX 70CL 218069-12 20" Chain PMR370GLX 70CL	<p>NOTE: Part number of Guide Bar is stamped on the bar.</p>	

Figure 8

MAIN FRAME ASSEMBLY

DOUBLE EAGLE™ 50



ITEM NO.	PART NUMBER	DESCRIPTION	UNITS PER ASY.
1	219056	Mainframe Asy	1
2	218785	. Mainframe-Weldment	1
3	219059	. Hose-Fuel Vent	1
4	218896	. Barb-Right Angle	3
5	218535	. Hose-Fuel	1
6	218895	. Pickup-Fuel	1
7	218535	. Hose-Oil	1
8	92465	. Pickup-Oil	1
9	218122	. Bumper-Cut Control	2
10	-219944	. Oil Cap Asy (vented)	1
11	-235511	.. Ring-"0"	1
12	-219943	.. Gasket-Oil Cap	1
13	218491	. Pin-Trigger	1
14	218492	. Pin-Trigger Release	1
15	93771	. Spring-Trigger	1
16	93538-01	. Trigger Asy	1

ITEM NO.	PART NUMBER	DESCRIPTION	UNITS PER ASY.
16	111013	.. Screw-5-40x.5	1
17	218836	. Release-Trigger	1
18	218260	Vent	1
19	219059	Hose-Fuel Vent	1
20	218972	Hose-Fuel	1
21	93998	Spring-Fuel Hose	1
22	218005	Nut-10-24	2
23	218117	Plate-Nut	1
24	218349	Wire Asy-Switch	1
25	218348	Wire Asy-Ground	1
26	-218786	Control Asy	1
27	218724	Rod-Throttle	1
28	218736	Rod-Choke	1
29	236790	Cap Asy-Fuel	1
30	-- --	. Ring-"0"	1

McCULLOCH
CORPORATION



● MANUFACTURING ● SALES ● SERVICE ●

McCULLOCH
CORPORATION

900 Lake Havasu Ave.
Lake Havasu City, AZ 86403-2891

FOR SERVICE-RELATED PROBLEMS,
REPAIR OR MAINTENANCE
TAKE YOUR UNIT TO THE NEAREST
AUTHORIZED McCULLOCH SERVICING
DEALER LISTED UNDER SAWS IN YOUR
TELEPHONE DIRECTORY YELLOW PAGES.

If additional assistance is required, call this toll-free hot-line:
(800) 423-6302

Arizona residents call collect (602) 453-3681